

SANITARY SEWER MAIN PLANS

REED'S COVE FOURTH ADDITION

LATERAL 6 MAIN 14 FOUR MILE CREEK

PROJECT NO. 468-84153

CITY OF WICHITA, KANSAS
JIM ARMOUR, CITY ENGINEER
OCA 744176

GENERAL NOTES

1. UNLESS SHOWN OR STATED OTHERWISE ON THESE DRAWINGS MATERIALS AND CONSTRUCTION SHALL BE IN ACCORDANCE WITH THE CITY OF WICHITA STANDARD SPECIFICATIONS.
2. THE CONTRACTOR SHALL BE RESPONSIBLE FOR PRESERVING PROPERTY IRONS. THE CONTRACTOR WILL BE REQUIRED TO REESTABLISH ANY PROPERTY IRONS WHICH ARE DAMAGED OR DESTROYED BY HIS CONSTRUCTION OPERATIONS. SUCH IRONS SHALL BE REESTABLISHED BY A LICENSED LAND SURVEYOR IN ACCORDANCE WITH STATE LAWS.
3. EXISTING UTILITIES AND THEIR LOCATIONS, AS SHOWN ON THE PLANS REPRESENT THE BEST INFORMATION OBTAINABLE FOR DESIGN. LOCATION INFORMATION HAS BEEN OBTAINED FROM THE VARIOUS UTILITY COMPANIES AND IS EITHER FROM COMPANY RECORD DRAWINGS OR COMPANY PROVIDED FIELD LOCATIONS. THE PLAN LOCATIONS SHOWN ARE NOT GUARANTEED. ADDITIONAL EXISTING UTILITIES MAY ALSO BE ENCOUNTERED.
4. CONTRACTOR WILL BE REQUIRED TO PROVIDE A MINIMUM ADVANCE NOTICE OF FORTY-EIGHT (48) HOURS TO UTILITY COMPANIES PRIOR TO STARTING ANY EXCAVATION AS FOLLOWS:

KANSAS ONE-CALL 1-800-344-7233
 or 687-2470 (LOCAL WICHITA)

THE CONTRACTOR MUST NOTIFY THE FOLLOWING IN CASE OF AN EMERGENCY:

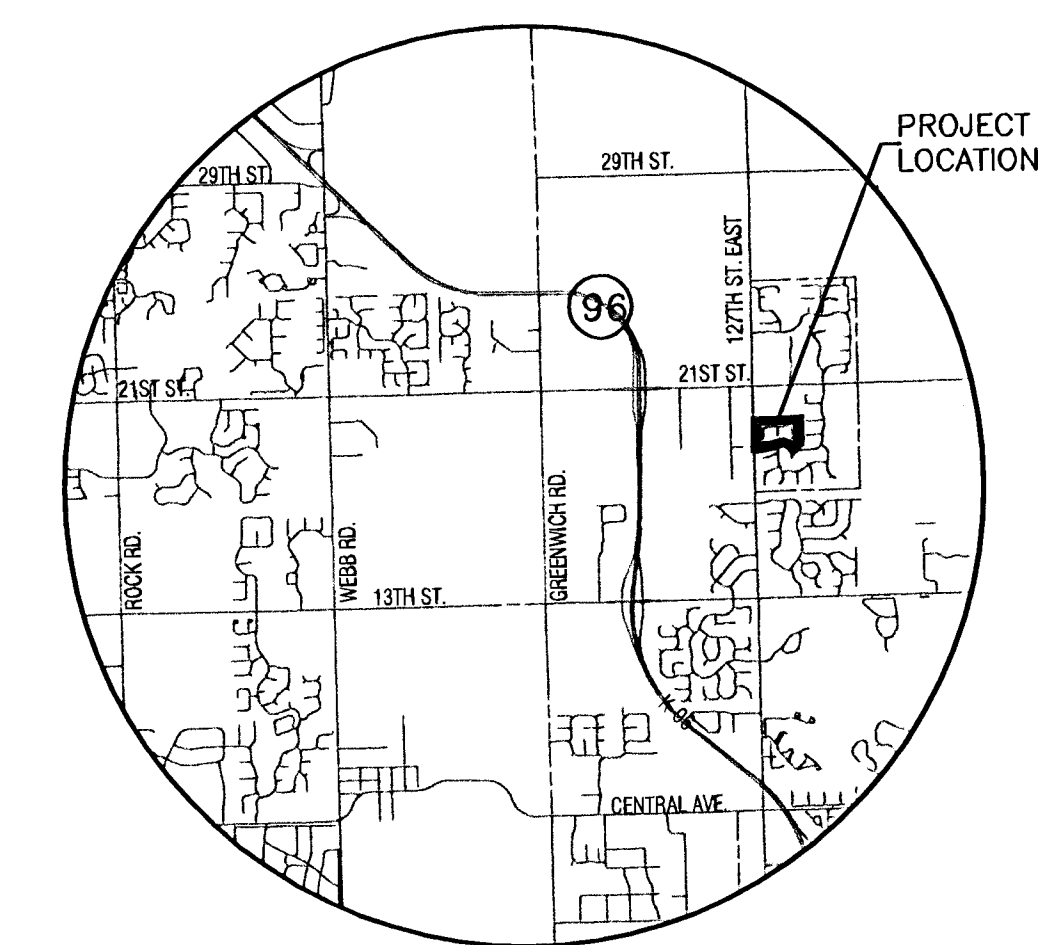
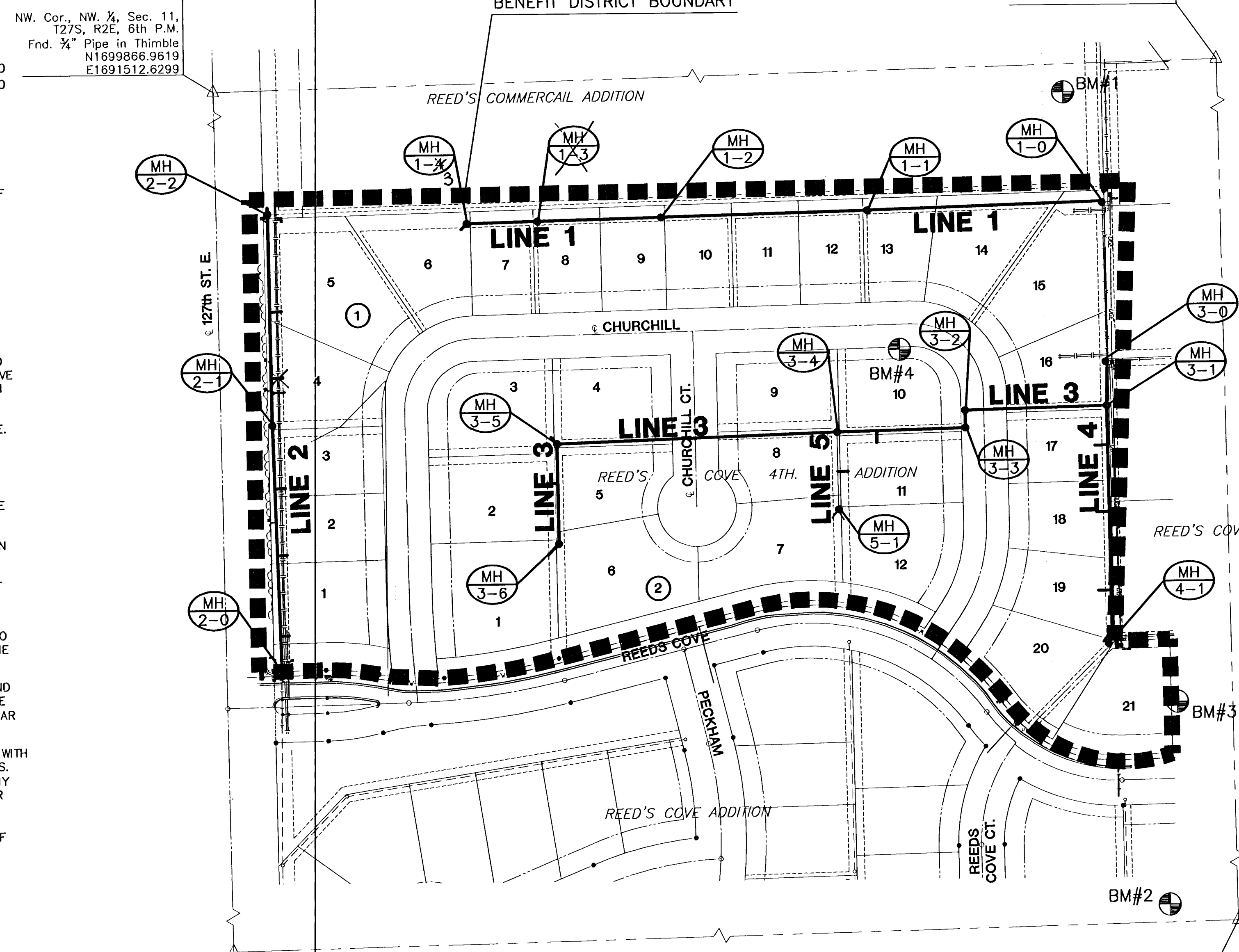
SOUTHWESTERN BELL TELEPHONE COMPANY 1-800-734-7630
 CABLEVISION 262-0661
 K.G.&E. (GAS & ELECTRIC) 383-8600
 CITY OF WICHITA WATER & SEWER MAINTENANCE 262-6000

5. RUBBLE FROM THE REMOVAL OF MISCELLANEOUS STRUCTURES AND EXCESS EXCAVATION WHICH IS TO BE WASTED SHALL BE DISPOSED OF ON SITES TO BE PROVIDED BY THE CONTRACTOR. THESE SITES SHALL BE APPROVED BY THE ENGINEER AS TO SUITABILITY, APPEARANCE AND SITE LOCATION. LOCATIONS THAT, IN THE OPINION OF THE ENGINEER, WILL LEAVE AN UNSIGHTLY APPEARANCE WILL NOT BE APPROVED. ALL DISPOSAL SITES MUST BE APPROVED BY THE KANSAS DEPARTMENT OF HEALTH AND ENVIRONMENT. MATERIAL EITHER STOCKPILED OR DISPOSED OF IN A FLOOD PLAIN WOULD REQUIRE A KANSAS STATE BOARD OF AGRICULTURE PERMIT. ANY MATERIAL DUMPED IN WATERS OF THE UNITED STATES OR WETLANDS IS SUBJECT TO U.S. CORPS OF ENGINEERS PERMITTING REGULATIONS. ANY MATERIAL BURIED OR STOCKPILED BEYOND APPROVED CONSTRUCTION LIMITS WOULD REQUIRE ADDITIONAL ARCHAEOLOGICAL INVESTIGATIONS UNLESS BURIED IN A PREVIOUSLY APPROVED BORROW LOCATION.
6. COST OF EXCAVATION, HAULING, AND DUMPING OF EXCESS EXCAVATION SHALL BE SUBSIDIARY TO THE PROJECT.
7. A PORTION OF EXCESS EXCAVATED MATERIAL SHALL BE MOUNDING AROUND MANHOLES WHICH EXTEND MORE THAN ONE (1) FOOT ABOVE THE EXISTING GROUND. SUCH MOUNDS SHALL BE CONSTRUCTED WITH A SIX (6) FOOT DIAMETER FLAT TOP WITH 4 TO 1 SIDE SLOPES DOWN TO THE ORIGINAL GROUND. THE ELEVATION OF THE FLAT TOP OF THE MOUND SHALL BE 0.4 FOOT BELOW THE TOP OF THE MANHOLE.
8. ALL STUBS AND PLUGGED PIPES SHALL BE LOCATED WITH GREEN PLASTIC TAPE IN THE SAME MANNER AS RISERS.
9. PRIOR TO LAYING SEWER LINES USING EXISTING STUBS IN EXISTING MANHOLES, THE CONTRACTOR SHALL EXPOSE AND VERIFY THE ELEVATION, GRADE AND ALIGNMENT OF EXISTING STUBS AND NOTIFY THE ENGINEER OF ANY DEVIATION FROM THE PLAN. WHERE CONNECTION TO AN EXISTING MANHOLE THAT DOES NOT HAVE AN EXISTING STUB OR THE STUB IS UNUSABLE DUE TO ELEVATION GRADE OR ALIGNMENT, THE CONTRACTOR SHALL RESHAPE THE EXISTING MANHOLE INVERT TO PROVIDE SMOOTH FLOW. THE COST OF RESHAPING EXISTING MANHOLE INVERTS IS INCIDENTAL TO THE PROJECT.
10. ALL EXISTING TREES ARE AN IMPORTANT ASSET TO THE DEVELOPER. NO TREE OF ANY SIZE SHALL BE REMOVED UNLESS NOTED OTHERWISE. THE CONTRACTOR SHALL COORDINATE TREE REMOVAL WITH MKEC.
11. EQUIPMENT AND CONSTRUCTION MATERIALS SHALL REMAIN OUT OF AND AWAY FROM TREE DRIPLINES SO AS NOT TO COMPACT THE ROOT ZONE OR DAMAGE THE TREE. CONSULT WITH ENGINEER BEFORE GRADING NEAR DRIPLINE OF TREES.
12. ANY TREE THAT MUST HAVE BRANCHES REMOVED SHALL BE TRIMMED WITH A SHARP INSTRUMENT/TOOL THAT IS INTENDED FOR SUCH OPERATIONS. GAIN APPROVAL FROM MKEC BEFORE REMOVING BRANCHES FROM ANY TREE. KNOCKING BRANCHES OFF WITH A BACKHOE OR OTHER SIMILAR MACHINES IS NOT ACCEPTABLE.
13. ALL DISTURBED AREAS TO BE SEEDED WITH RYE GRASS AT A RATE OF 200LBS./ ACRE WITHIN 10 DAYS OF CONSTRUCTION.
14. EXCESS EXCAVATION MAY BE WASTED ON SITE IN APPROVED LOCATIONS.
15. CONTRACTOR SHALL MAINTAIN EROSION CONTROL THROUGHOUT CONSTRUCTION. COST SUBSIDIARY TO PROJECT.
16. CONTRACTOR TO INSTALL PLASTIC SEWER MANHOLE MARKERS. SEWER DEPARTMENT WILL PROVIDE THE MATERIALS. COST TO INSTALL MARKERS SUBSIDIARY TO MANHOLES.

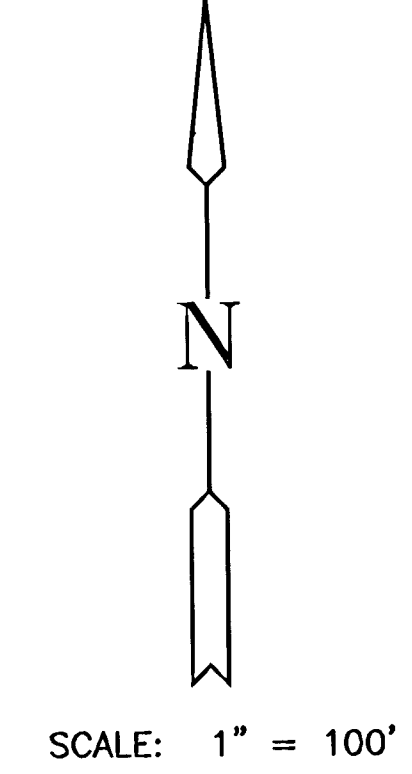
SW. Cor., NW ¼,
 Sec. 11, T27S, R2E,
 6th P.M., Fnd. ¾"
 Pipe in Thimble
 N1697211.0539
 E1691552.4949

NW. Cor., NW ¼, Sec. 11,
 T27S, R2E, 6th P.M.
 Fnd. ¾" Pipe in Thimble
 N1699866.9619
 E1691512.6299

NE. Cor., NW ¼, Sec. 11,
 T27S, R2E, 6th P.M.
 Fnd. ¾" Pipe
 N1699933.6799
 E1694161.6279



LOCATION MAP



INDEX TO DRAWINGS

| SHEET NO. | DESCRIPTION |
|-----------|-----------------------|
| 1 | TITLE SHEET |
| 2 | DETAILS |
| 3 | LINE 1 |
| 4 | LINE 2 & 5 |
| 5 | LINE 3 |
| 6 | LINE 4 |
| 7 | VERTICAL RISER DETAIL |
| 8-9 | BMP DETAILS |
| 10 | BUBBLE MAP |
| 11 | FINAL PLAT |

McCullough Excavation, Inc. - Contractor
Bethke, City - Inspector
Released 8/14/06
As-Built
Risers & Stubs
.pdf by JDL 10/18/06

BENCHMARKS

- BM 1 SQUARE CUT W. END OF S. HEADWALL OF RCB UNDER 21ST ST. N., 1506' +/- E. & 25' +/- S. OF NW COR SEC 11, T 27 S, R 2 E. ELEV.=1351.77
- BM 2 RR SPIKE IN N. FACE N. H-POLE, 4TH H-POLE EAST OF 127TH ST. EAST, 1940' +/- E. & 86' +/- NORTH OF W 1/4 COR SEC 11, T 27 S, R 2 E. ELEV.=1356.10
- BM 3 "T" POST 15' +/- N. & 15' +/- W. OF SE COR LOT 1 BLOCK 3, REED'S COVE. ELEV.=1354.30
- BM 4 "T" POST 10' +/- N. & 10' +/- W. OF SE COR LOT 1, BLOCK 1, REED'S COMMERCIAL (NE COR LOT 40, BLOCK 1, REED'S COVE). ELEV.=1363.37

MKEC
 ENGINEERING
 CONSULTANTS, INC.
 411 N. WEBB ROAD
 WICHITA, K.S. 67206
 316-684-9600

SANITARY SEWER PLANS
REED'S COVE
FOURTH ADDITION

TITLE SHEET

SHEET TITLE
448-00000
 PROJECT NUMBER

DESIGN BY **SRS**
 DRAWN BY **DM**
 CHECKED BY **GJA**

ISSUED
FEBRUARY 2006

REVISID

SHEET NO.
1 of 11