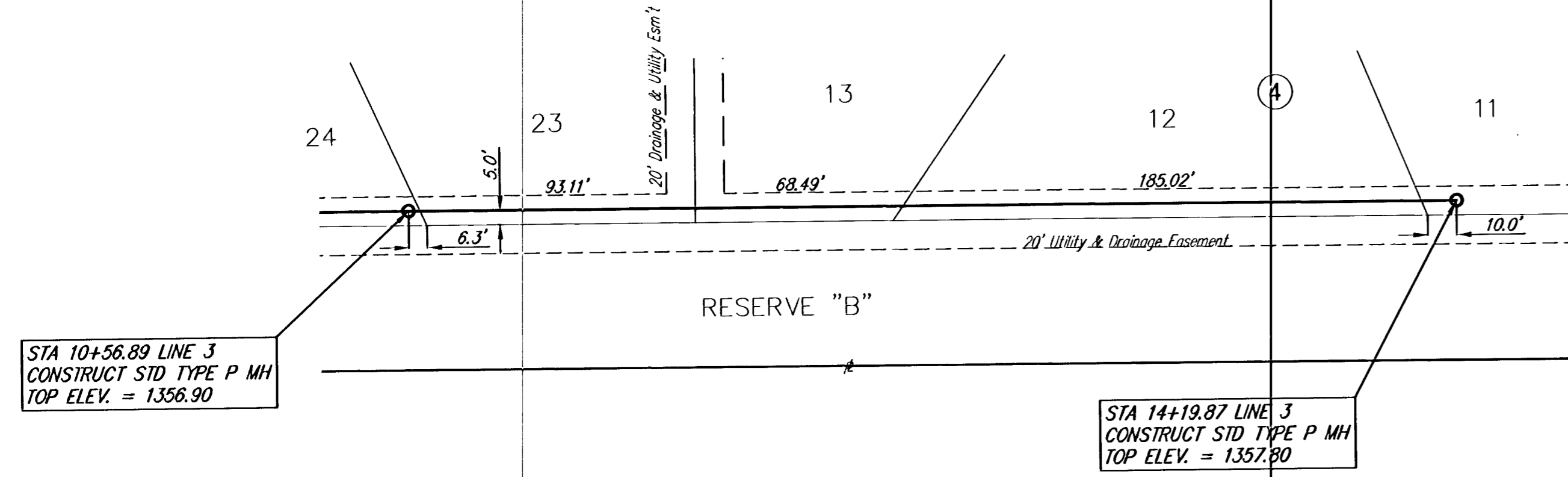


Casa Bella Addition



STA 10+56.89 LINE 3
CONSTRUCT STD TYPE P MH
TOP ELEV. = 1356.90

STA 14+19.87 LINE 3
CONSTRUCT STD TYPE P MH
TOP ELEV. = 1357.80

STA 1+74.37 LINE 3A
CONSTRUCT STD TYPE P MH
TOP ELEV. = 1444.60

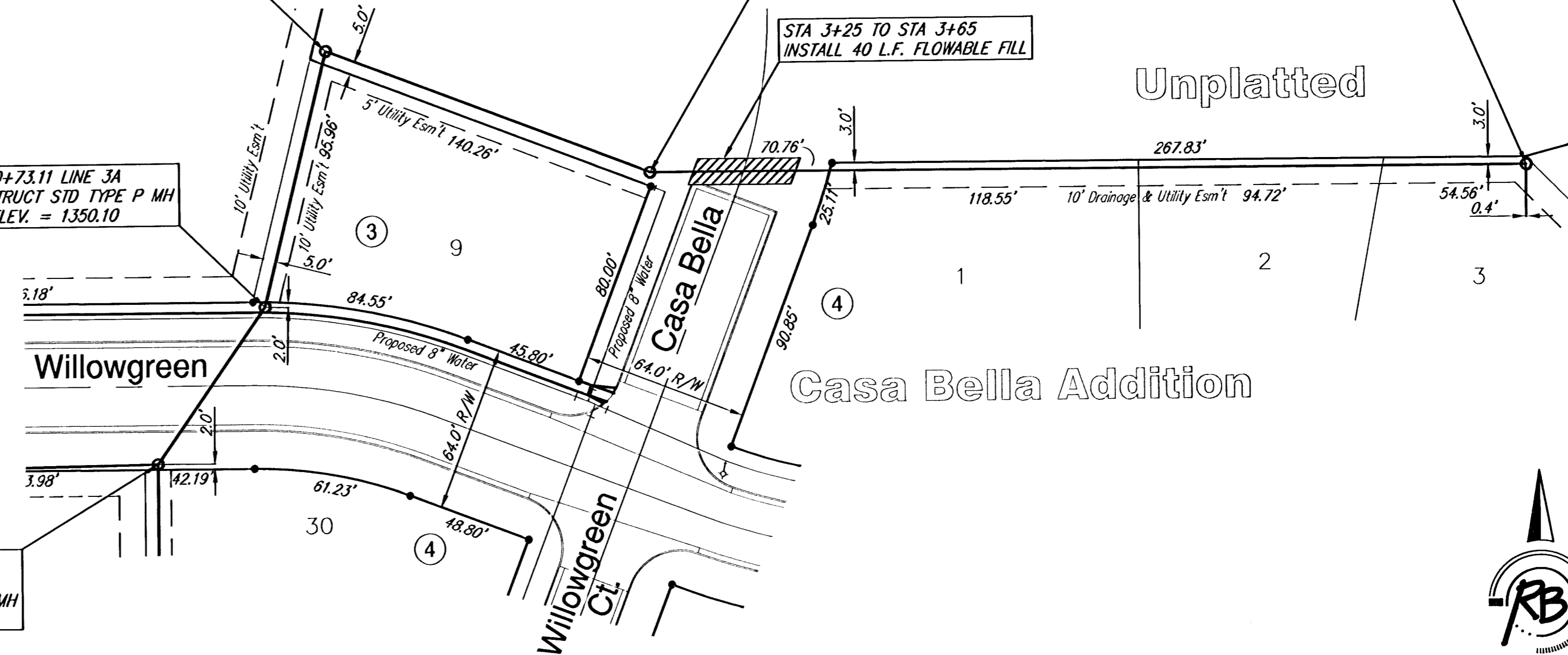
STA 0+73.11 LINE 3A
CONSTRUCT STD TYPE P MH
TOP ELEV. = 1350.10

STA 0+00.00 LINE 3A=
STA 1+86.38 LINE 3
CONSTRUCT STD TYPE P MH
TOP ELEV. = 1349.60

STA 3+08.09 LINE 3A
CONSTRUCT STD TYPE P MH
TOP ELEV. = 14351.70

STA 3+25 TO STA 3+65
INSTALL 40 L.F. FLOWABLE FILL

STA 6+46.75 LINE 3A
CONSTRUCT STD TYPE P MH
TOP ELEV. = 1355.60

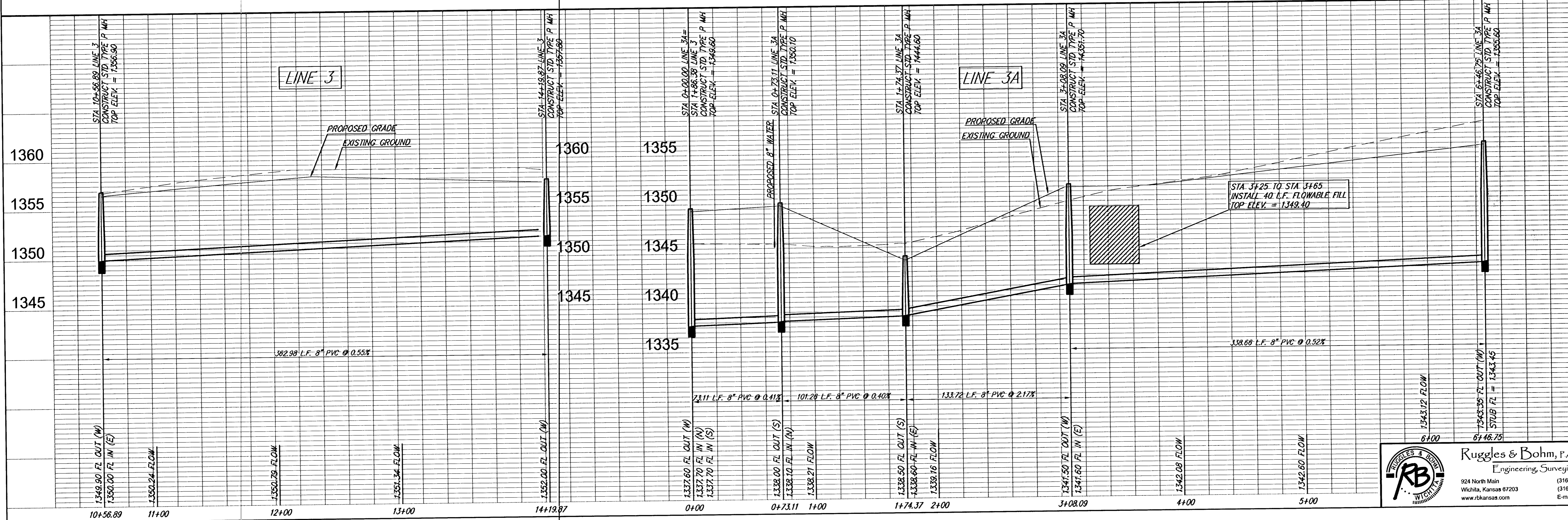


Unplatted

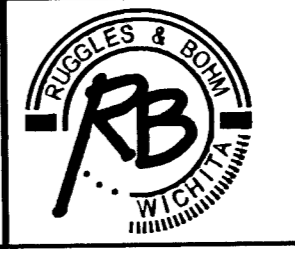
Casa Bella Addition



SCALE 1" = 40'
IRON = •



PROJECT NUMBER 468-84072	DESIGN AML	DRAWN AML	REVISION DATE
DRAWING FILE Sanitary Sewer (SS 01)	UTILITY	Jan. 11, 2005	REVIEW
Sawmill Creek Addition Sanitary Sewer WICHITA, KANSAS			
1360	1355	1350	1345
1340	1335		



Ruggles & Bohm, P.A.
Engineering, Surveying, Land Planning
924 North Main
Wichita, Kansas 67203
www.rbkansas.com
(316) 264-8008
(316) 264-4821 fax
E-mail: info@rbkansas.com

RB JOB
2650E
SHEET
5
OF
15