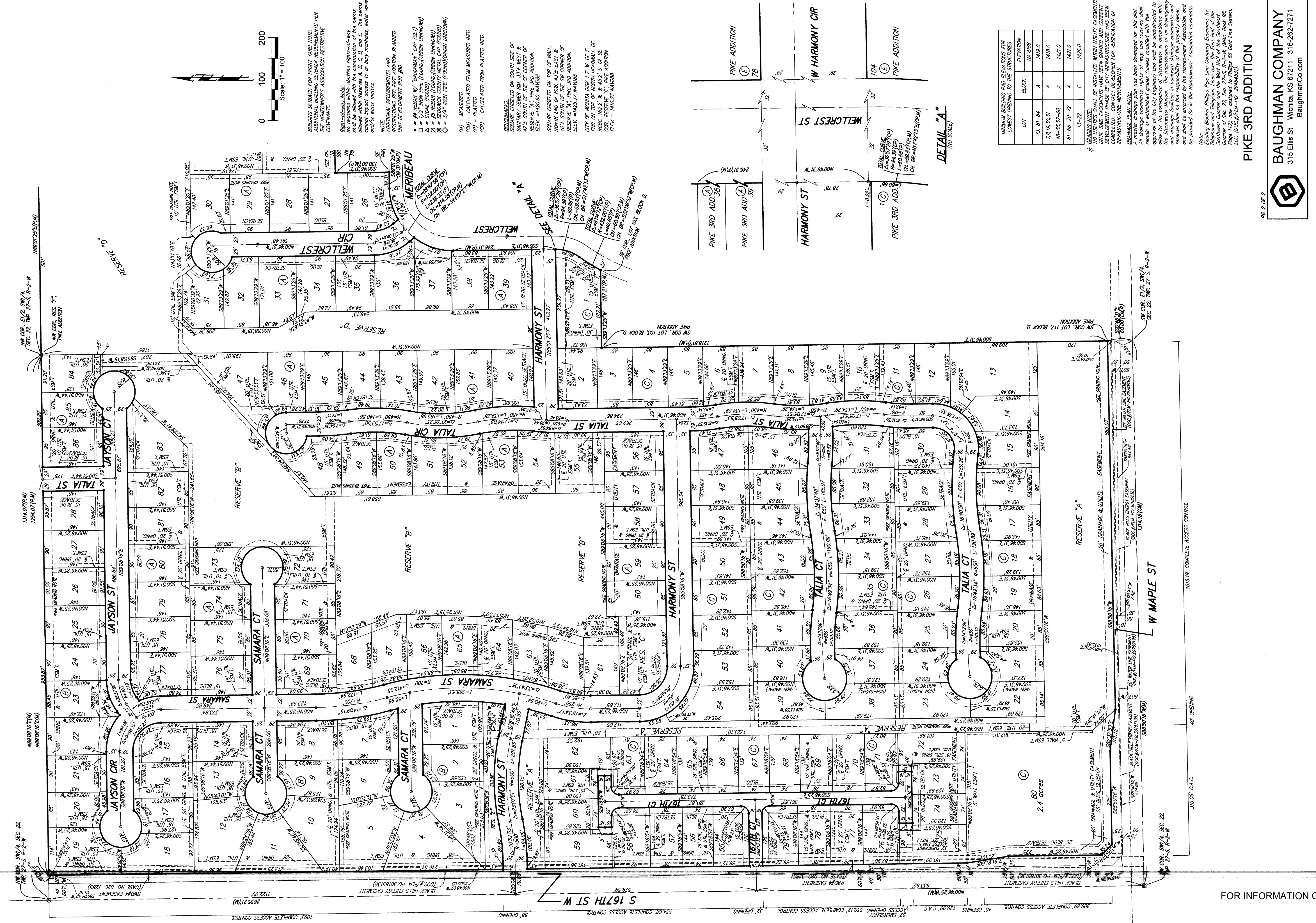


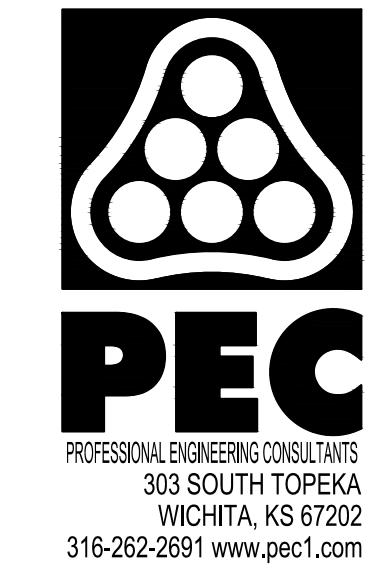
PIKE 3RD ADDITION

WICHITA, SEDGWICK COUNTY, KANSAS



LOT	BLOCK	ELEVATION
21, 81-84	A	146.0
28, 18, 30, 31	A	146.0
46-53, 57-60	A	145.0
61-68, 70-72	A	145.0
13-22	C	145.0

BAUGHMAN COMPANY
 315 Ellis St. Wichita, KS 67211 316-262-7271
 BaughmanCo.com



WATER MAIN IMPROVEMENTS
 12" WATER MAIN ALONG 167TH ST. W
 FROM MAPLE STREET TO HARMONY STREET
 PAUL GUNZELMAN, P.E. - CITY ENGINEER
 CITY OF WICHITA PROJECT NO. 448-2023-021493

JOB NO.	210975-008
DATE	SEPTEMBER 2023
PM	GAS
DESIGNED BY	KJW
DRAWN BY	AJH
CHECKED BY	AMD

COPY OF PLAT - PIKES 3RD ADDITION

CU-510

PC 308-78

FOR INFORMATION ONLY