

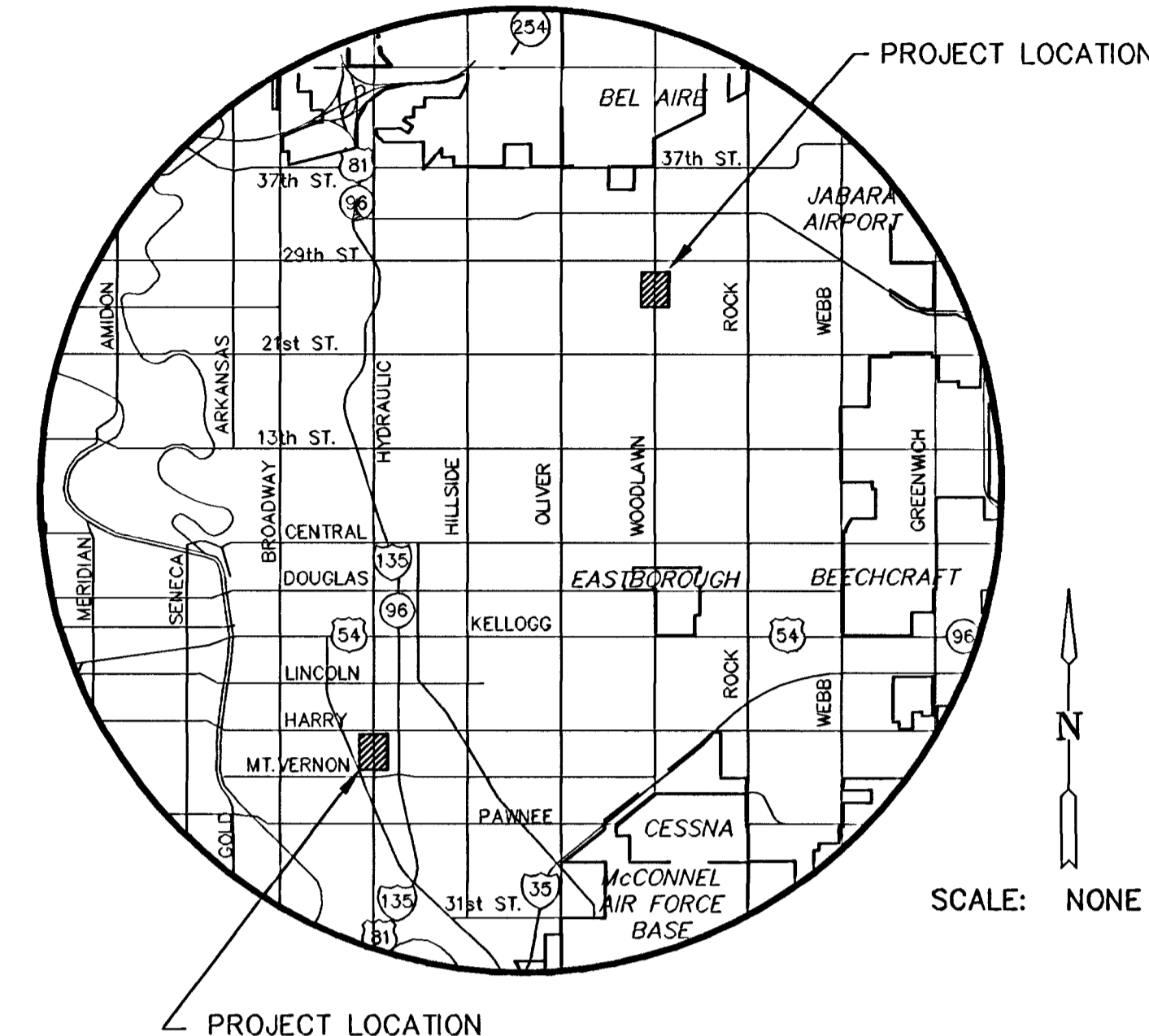
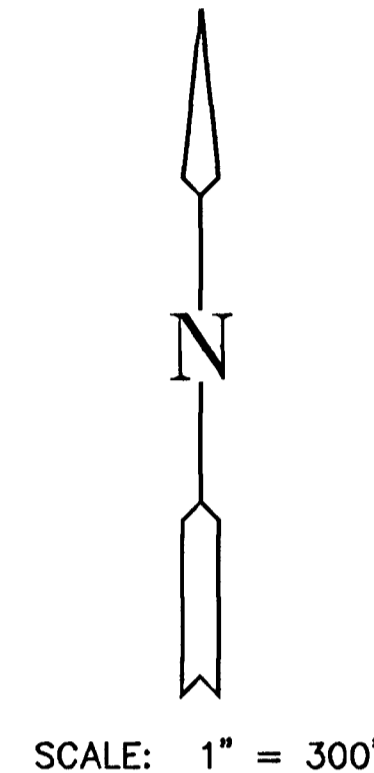
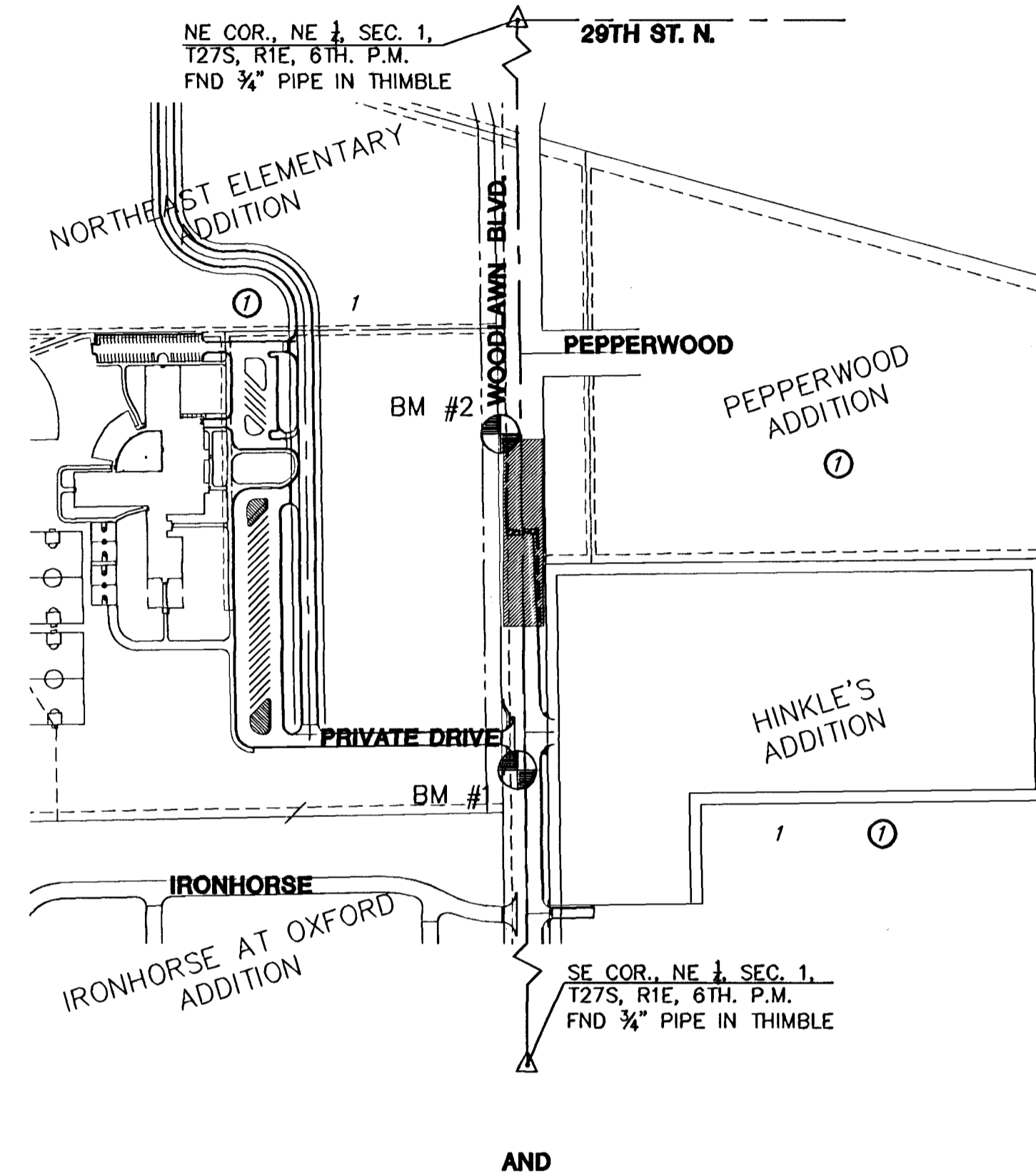
PROJECT NO. 472-83991

JIM ARMOUR, P.E. - ACTING CITY ENGINEER

OCA 706911

WOODLAWN BLVD. - JACKSON ELEMENTARY

ON WOODLAWN BETWEEN PEPPERWOOD & IRONHORSE

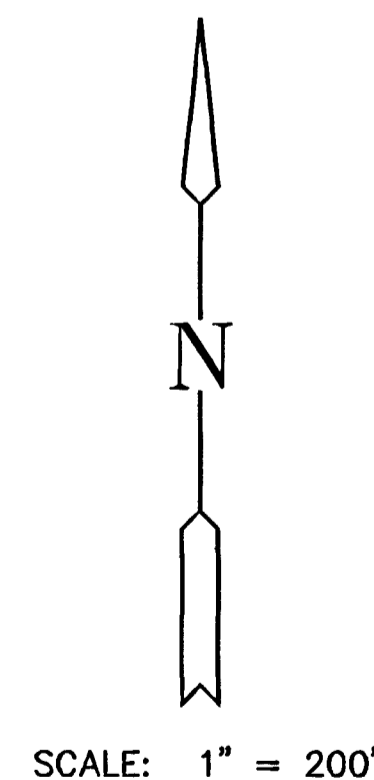


INDEX TO DRAWINGS

SHEET NO.	DESCRIPTION
1	TITLE SHEET
2-3	PAVEMENT MARKINGS & SIGNALIZATION PLANS
4-5	WIRING DIAGRAM
6-9	SIGNALIZATION DETAILS

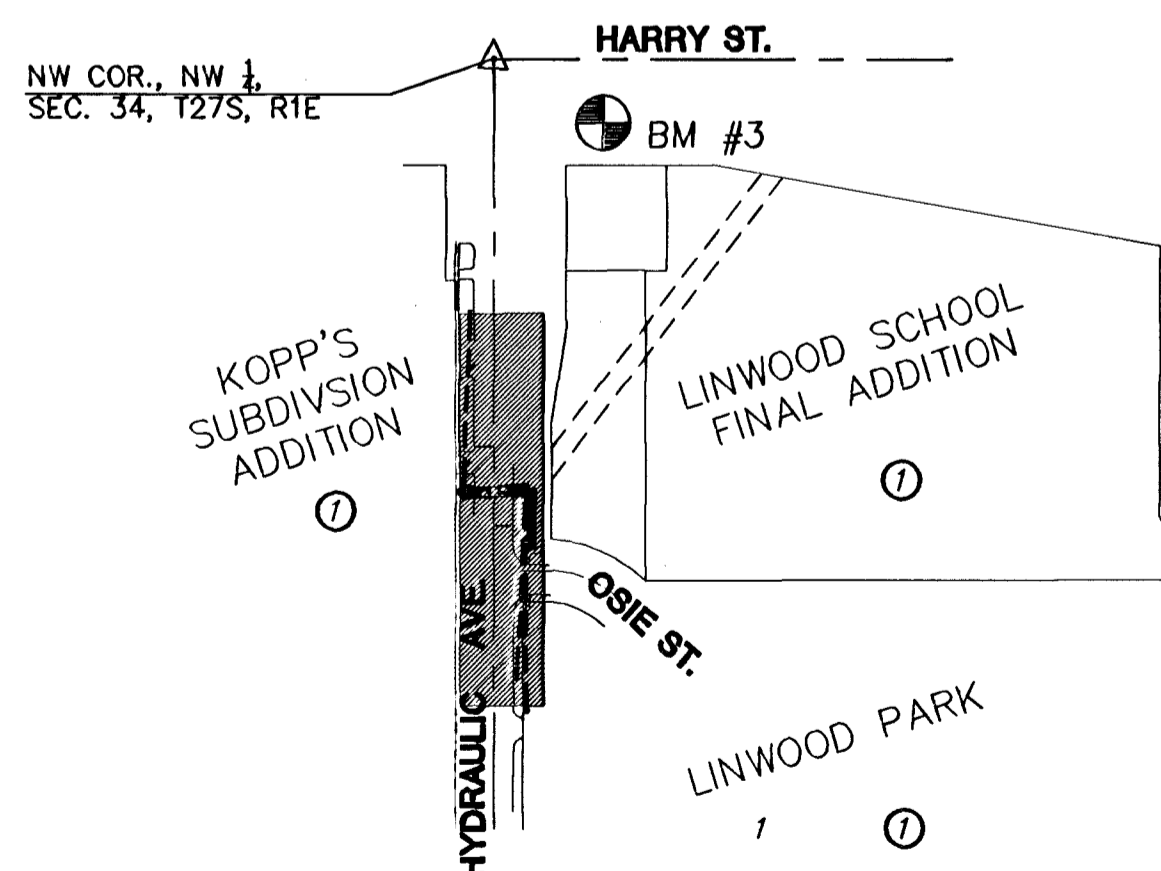
BENCHMARK

- BM #1 RR SPIKE IN WEST FACE OF 7TH PP SOUTH OF 29TH NORTH ON THE WEST SIDE OF WOODLAWN. 1773.0' SOUTH AND 31' WEST OF THE NE CORNER SEC. 1, T27S, R1E. C.O.W. ELEV.=190.75
- BM #2 RR SPIKE IN WEST FACE OF 5TH PP SOUTH OF 29TH ST. NORTH ON THE WEST SIDE OF WOODLAWN. 1214.0' SOUTH AND 32.0' WEST OF THE NE CORNER OF SEC. 1, T27S, R1E. C.O.W. ELEV.=188.49 M=1375.903 NGVD=1375.89
- BM #3 SE CORNER OF INTERSECTION. LOCATED ON TRAFFIC SIGNAL LIGHT BASE. C.O.W. ELEV.=100.26



HYDRAULIC AVE. - LINWOOD ELEMENTARY

ON HYDRAULIC AVE. BETWEEN HARRY ST. & OSIE ST.



1-85



GENERAL NOTES

- UNLESS SHOWN OR STATED OTHERWISE ON THESE DRAWINGS, MATERIALS AND CONSTRUCTION SHALL BE IN ACCORDANCE WITH CITY OF WICHITA CONCRETE PAVEMENT AND ASPHALTIC CONCRETE PAVEMENT SPECIFICATIONS.
- CONTRACTOR WILL BE REQUIRED TO PROVIDE A MINIMUM ADVANCE NOTICE OF SEVENTY-TWO (72) HOURS TO UTILITY COMPANIES PRIOR TO STARTING ANY EXCAVATION AS FOLLOWS:
KANSAS ONE-CALL 1-800-344-7233
OR 687-2470 (LOCAL WICHITA)
- THE CONTRACTOR MUST NOTIFY THE FOLLOWING IN CASE OF AN EMERGENCY:
SBC (TELEPHONE) 800-870-8390
COX COMMUNICATIONS (CABLE) 262-0661
WESTAR (ELECTRIC) 261-6512
KANSAS GAS SERVICE (GAS) 832-3101
CITY OF WICHITA WATER & SEWER MAINT. 262-6000
AQUILA (GAS) 946-0096
- THE CONTRACTOR SHALL BE RESPONSIBLE FOR PRESERVING PROPERTY IRONS. THE CONTRACTOR WILL BE REQUIRED TO RE-ESTABLISH ANY PROPERTY IRONS WHICH ARE DAMAGED OR DESTROYED BY HIS CONSTRUCTION OPERATIONS. SUCH IRONS SHALL BE RE-ESTABLISHED BY A LICENSED LAND SURVEYOR IN ACCORDANCE WITH STATE LAWS.
- EXISTING UTILITIES AND THEIR LOCATIONS, AS SHOWN ON THE PLANS REPRESENT THE BEST INFORMATION OBTAINABLE FOR DESIGN. LOCATION INFORMATION HAS BEEN OBTAINED FROM THE VARIOUS UTILITY COMPANIES AND IS EITHER FROM COMPANY RECORD DRAWINGS OR COMPANY PROVIDED FIELD LOCATIONS. THE PLAN LOCATIONS SHOWN ARE NOT GUARANTEED. ADDITIONAL EXISTING UTILITIES MAY ALSO BE ENCOUNTERED.
- RUBBLE FROM THE REMOVAL OF MISCELLANEOUS STRUCTURES AND EXCESS EXCAVATION WHICH IS TO BE WASTED SHALL BE DISPOSED OF ON SITES TO BE PROVIDED BY THE CONTRACTOR. THESE SITES SHALL BE APPROVED BY THE ENGINEER AS TO SUITABILITY, APPEARANCE AND SITE LOCATION. LOCATIONS THAT, IN THE OPINION OF THE ENGINEER, WILL LEAVE AN UNSIGHTLY APPEARANCE WILL NOT BE APPROVED. ALL DISPOSAL SITES MUST BE APPROVED BY THE KANSAS DEPARTMENT OF HEALTH AND ENVIRONMENT. MATERIAL EITHER STOCKPILED OR DISPOSED OF IN A FLOOD PLAIN WOULD REQUIRE A KANSAS STATE BOARD OF AGRICULTURE PERMIT. ANY MATERIAL DUMPED IN WATERS OF THE UNITED STATES OR WETLANDS IS SUBJECT TO U.S. CORPS OF ENGINEERS PERMITTING REGULATIONS. ANY MATERIAL BURIED OR STOCKPILED BEYOND APPROVED CONSTRUCTION LIMITS WOULD REQUIRE ADDITIONAL ARCHAEOLOGICAL INVESTIGATIONS UNLESS BURIED IN A PREVIOUSLY APPROVED BORROW LOCATION.
- A SAW CUT OF AT LEAST ONE-HALF THE DEPTH OF THE EXISTING SURFACE COURSES OR ONE-FOURTH THE DEPTH OF THE EXISTING TOTAL PAVEMENT THICKNESS SHALL BE PROVIDED AT LOCATIONS WHERE PROPOSED CONSTRUCTION ADJUTS AN EXISTING SURFACE OR PAVEMENT FOR WHICH PARTIAL REMOVAL OF THAT SURFACE OR PAVEMENT IS REQUIRED. SAW JOINT TO FACILITATE REMOVAL WITHIN THREE (3) FEET OF EXISTING JOINTS WILL NOT BE PERMITTED AND FOR SUCH INSTANCES THE LIMITS OF REMOVAL SHALL EXTEND TO THE EXISTING JOINT. SUCH SAW CUTS WILL NOT BE PAID FOR DIRECTLY AND THIS COST SHALL BE CONSIDERED AS SUBSIDIARY TO THE REMOVAL OF SURFACE OR PAVEMENT.
- CONTRACTOR SHALL RESEED AND MULCH ALL DISTURBED AREAS. COST SHALL BE CONSIDERED SUBSIDIARY TO SITE RESTORATION.

SIGNALIZATION NOTES

- THE CITY WILL PROVIDE POLES & MAST ARMS ONLY. TO BE PICKED UP BY THE CONTRACTOR AT CMF, 1801 S. MCLEAN, WICHITA, KS.
- CONTRACTOR SHALL BE RESPONSIBLE FOR ALL ASPECTS OF INSTALLATION OF SAID POLES & MAST ARMS INCLUDING ANCHOR SYSTEM, CONDUIT, WIRING, ETC.
- CONTRACTOR SHALL PROVIDE ALL OTHER EQUIPMENT SUCH AS SIGNALS, CABLE, CONDUIT, CABINET, CONTROLLER, PUSH-BUTTONS, CONCRETE AND ASSOCIATED EQUIPMENT AND MATERIALS AS NECESSARY TO COMPLETE OPERATIONAL INSTALLATION.

G:\CIVIL\0:160\DWG\CROSSWALK\JACKSON_ELEM\01160_SGT.DWG



CITY OF WICHITA SIGNALIZED CROSSWALKS
WOODLAWN BLVD. & HYRAULIC AVE.
PROJECT NAME

MKEC
ENGINEERING CONSULTANTS
411 N. WEBB ROAD
WICHITA, KS. 67206
316-684-9600

TITLE SHEET
SHEET TITLE

DESIGN BY: MKEC DRAWN BY: DAC CHECKED BY: JTC

DATE: JUNE 2004 JOB NO.: 01160_SGT SHEET/OF: 1 / 9