

# GENERAL NOTES:

1. The Contractor shall comply with all applicable safety regulations. All construction shall be completed following current City Standard Specifications and Special Provisions.

2. Contractor will be required to provide notice to utility companies a minimum of seventy-two (72) hours prior to any excavation, as follows:

Kansas One-Call 687-2470

The Contractor must notify the following in case of an emergency:

- AT&T 1-800-246-8464
- Black Hills Energy 1-800-694-8989
- City of Wichita Water & Sewer 1-316-219-8921
- City of Wichita Stormwater 1-316-268-4090
- City of Wichita Traffic 1-316-268-4034
- Cox Communications 1-888-249-3530
- Kansas Gas Service 1-888-482-4950
- Westar Energy 1-800-544-4857

3. Utility service lines, poles, etc. are to be adjusted as necessary by others prior to construction unless the plans specifically call for their adjustment by the Contractor or unless the plans specifically identify a utility to be adjusted by its owner during construction. Existing utilities and their location, as shown on the plans, represent the best information obtainable for design. The Contractor will be required to work around existing utilities within the right-of-way which do not conflict with proposed construction.

4. Rubble from the removal of miscellaneous structures and excess excavation which is to be wasted shall be disposed of on sites to be provided by the Contractor. These sites shall be approved by the Engineer as to suitability, appearance and site location. Locations, in the opinion of the Engineer, that will leave an unsightly appearance will not be approved. All disposal sites must be approved by the Kansas Department of Health and Environment. Material either stockpiled or disposed of in a flood plain will require a Kansas State Board of Agriculture permit. Any material dumped in waters of the United States or wetlands is subject to U.S. Corps of Engineers permitting regulations. Any material buried or stockpiled beyond approved construction limits will require additional archaeological investigations unless buried in a previously approved borrow location.

5. Trees and shrubs in public right-of-way which are in direct conflict with proposed new construction shall be removed by the Contractor with the City Engineer's approval. Trees and shrubs which are not in direct conflict with proposed new construction shall be saved and protected from damage.

6. The Contractor shall give all property owners and/or tenants of developed property abutting the construction of this project a minimum of ten (10) days notice prior to start of construction.

7. The Contractor shall be responsible for preserving property irons. The Contractor will be required to re-establish any property irons which are damaged or destroyed by his construction operations. Such irons shall be re-established by a licensed land surveyor in accordance with state laws.

8. The Engineering Division shall field locate water valves one time during construction when requested by the Contractor. It shall be the Contractor's responsibility to preserve such field locations during the construction process. Water valves, valve boxes or fire hydrants damaged during construction shall be repaired by Contractor at his own expense. Valve boxes and water meters within the project limits shall be adjusted to match final grades by the contractor.

9. If traffic will be impacted by construction, a traffic control plan must be submitted and approved by the City Traffic Engineer, Mike Armour at [traffic@wichita.gov](mailto:traffic@wichita.gov) before construction can begin. The Contractor shall be responsible for all traffic control measures to facilitate construction. All construction zone markings and signage shall conform to the latest version of the Manual on Uniform Traffic Control Devices (MUTCD) as published by the US Dept. of Transportation, Federal Highway Administration. All costs associated with construction markings and signage shall be the Contractors responsibility.

10. All elevations shown are NAVD 88.

11. All areas disturbed during construction that will not be under proposed pavement shall be restored to match existing conditions.

12. All applicable fees (tap, equity, in lieu of & main benefit) must be paid before any connections can be made on this project. Quotes can be obtained on fees by calling 316-268-4555.

13. All stubs and capped pipes shall be located with green plastic tape in the same manner as risers.

14. Connecting to Existing Manholes: Prior to laying sewer lines using existing stubs in existing manholes, the Contractor shall expose and verify the elevation, grade and alignment of existing stubs and notify the Engineer of any deviation from the plans. Where the stub is unusable due to elevation grade or alignment, the Contractor shall remove the stub and plug the hole, and reshape the existing manhole invert to provide smooth flow. Where connecting to an existing manhole that does not have an existing stub, the Contractor shall core cut into existing manhole wall to make connection using approved water stop gasket, and reshape the existing manhole invert to provide smooth flow. The cost to connecting to existing manholes is incidental to the project.

15. Contractor shall limit the extent of trench open overnight and weekends to less than 50 feet.

16. Contractor shall provide positive drainage away from all manhole covers.

17. The Contractor shall prevent any construction debris from entering the existing sanitary sewer during construction.

18. The Contractor shall be responsible for maintaining continuous flow of sewage through construction. Contractors proposed method for maintaining sewage flow shall be submitted and approved by the Sewer Maintenance Division (316-268-4073) prior to starting and by-passing of sewage flows.

19. Any over excavation from manhole and pipe removal shall be backfilled with AB-3 compacted to 90-95% ASTM D698.

20. The Contractor shall protect from damage and support existing utilities through construction as approved by the utility owner and the Engineer at the contractors expense.

21. Contractor shall be responsible for removal of existing trees as deemed necessary to complete the project.

# SANITARY SEWER TO SERVE Fox Run 2nd Addition

CITY OF WICHITA, KANSAS

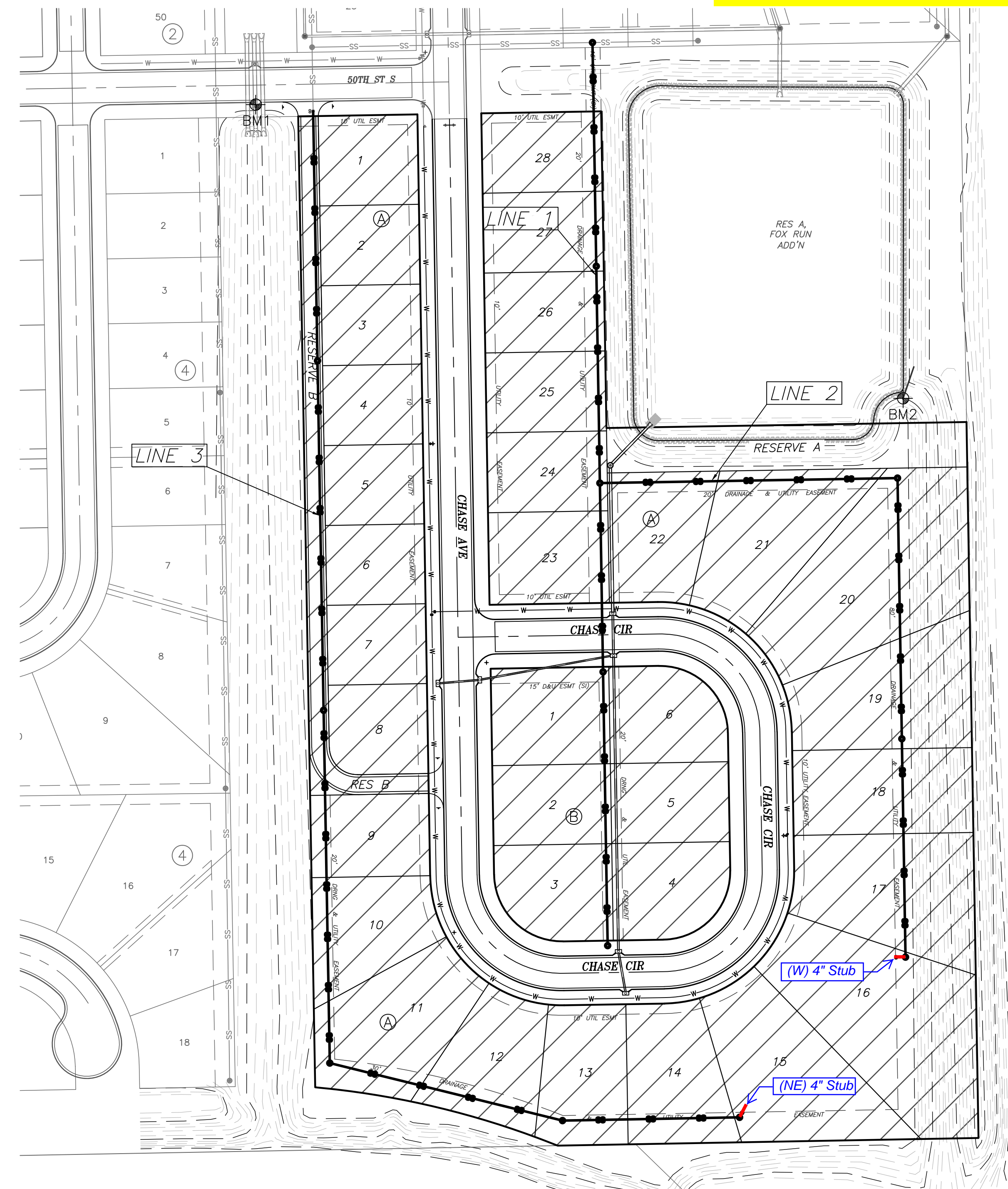
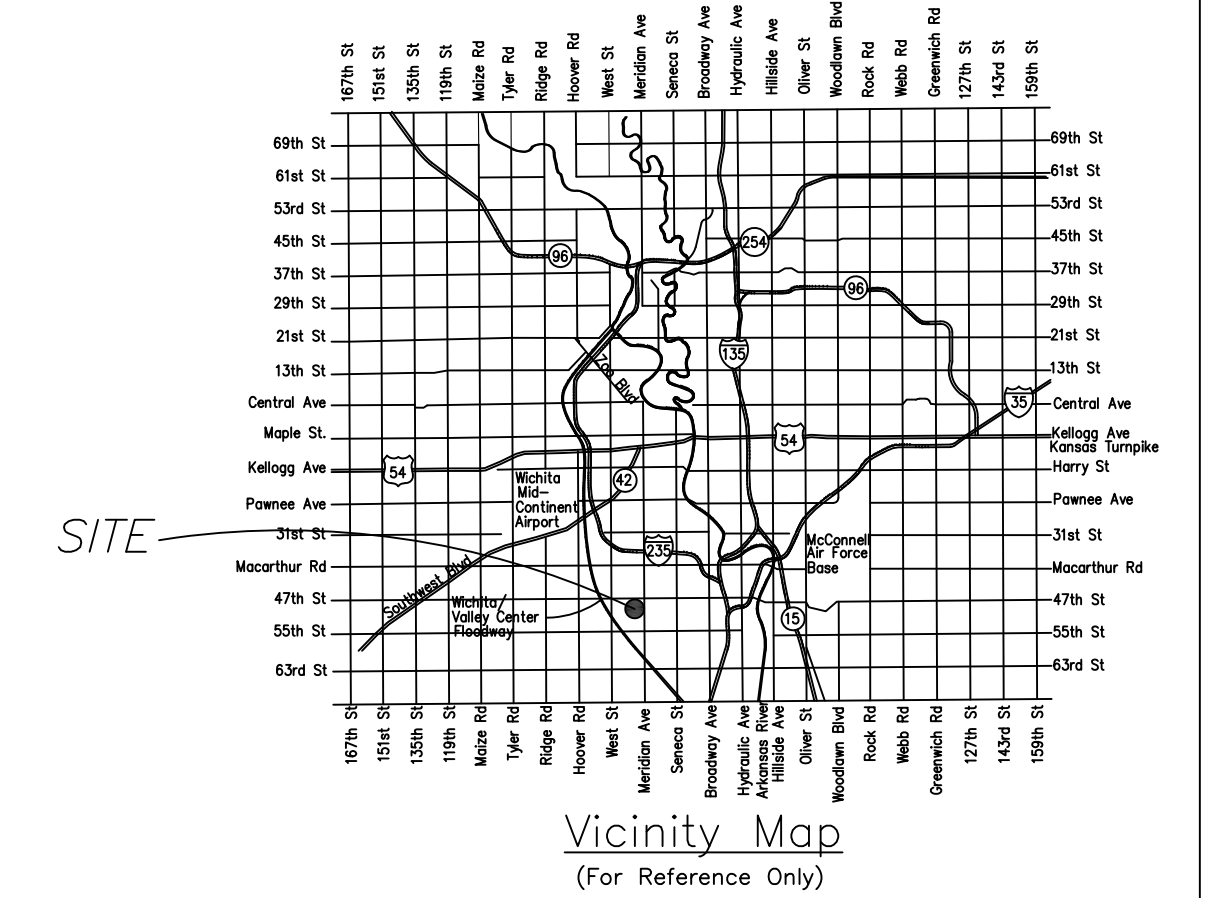
Paul Gunzelman, P.E. Interim City Engineer

Project Number: 468-2022-020089

Org Code: 47267822

Munis Number: E3034

Nowak Construction - Contractor  
S. Lowe - City of Wichita, Field Project Engineer  
E. Flores - City of Wichita, Inspector  
As-built  
Stubs  
Release Date (for connection purposes only): 11/22/2023  
Completion Date:  
pdf: apr 11/22/2023



## INDEX OF SHEETS:

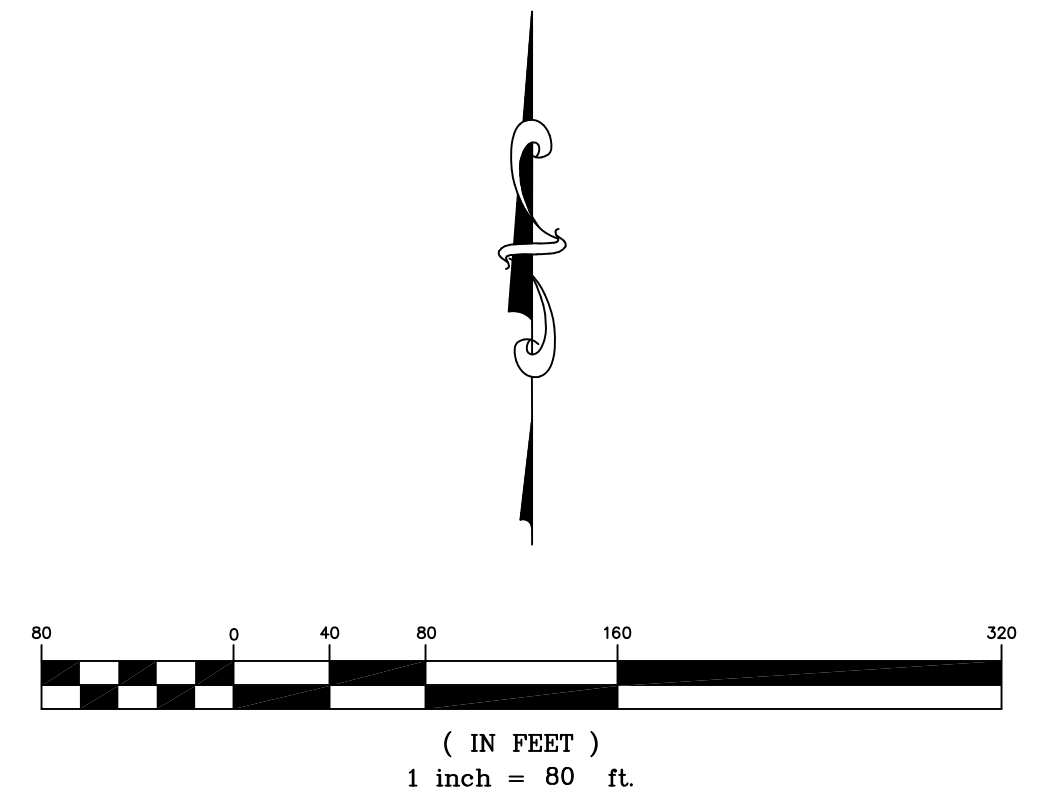
- 1.0 Cover Sheet
- 2.0 Control Map
- 3.0-3.1 Plan & Profiles - Line 1
- 4.0-4.1 Plan & Profiles - Line 2
- 5.0-5.2 Plan & Profiles - Line 3
- 6.0-6.3 Standard SS Details
- 7.0 Easement Grading Plan
- 8.0 Erosion Control Plan
- 8.1-8.5 Erosion Control Details
- 9.0 Plat

Benefit Area

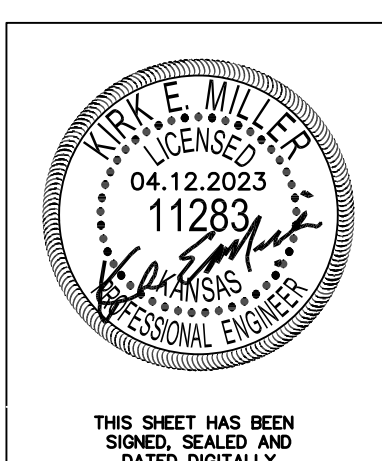
## BENCHMARKS:

BM 1: Chiseled "□" on Curb Inlet, Approx. 12' South & 42' West of the NW Corner of Fox Run 2nd Addition Elevation = 1275.55 (NAVD 88)

BM 2: Mag Nail on top of Weir, Approx. 23' North & 64' West of the NE Corner of Fox Run 2nd Addition Elevation = 1271.16 (NAVD 88)



**KEMILLER**  
ENGINEERING PA  
117 E. Lewis, Wichita, KS 67202 (316)264-0242



APRIL 2023

Developer: Superior Homes, LP  
1109 S Rock Rd, Wichita, KS 67207  
316-516-0139

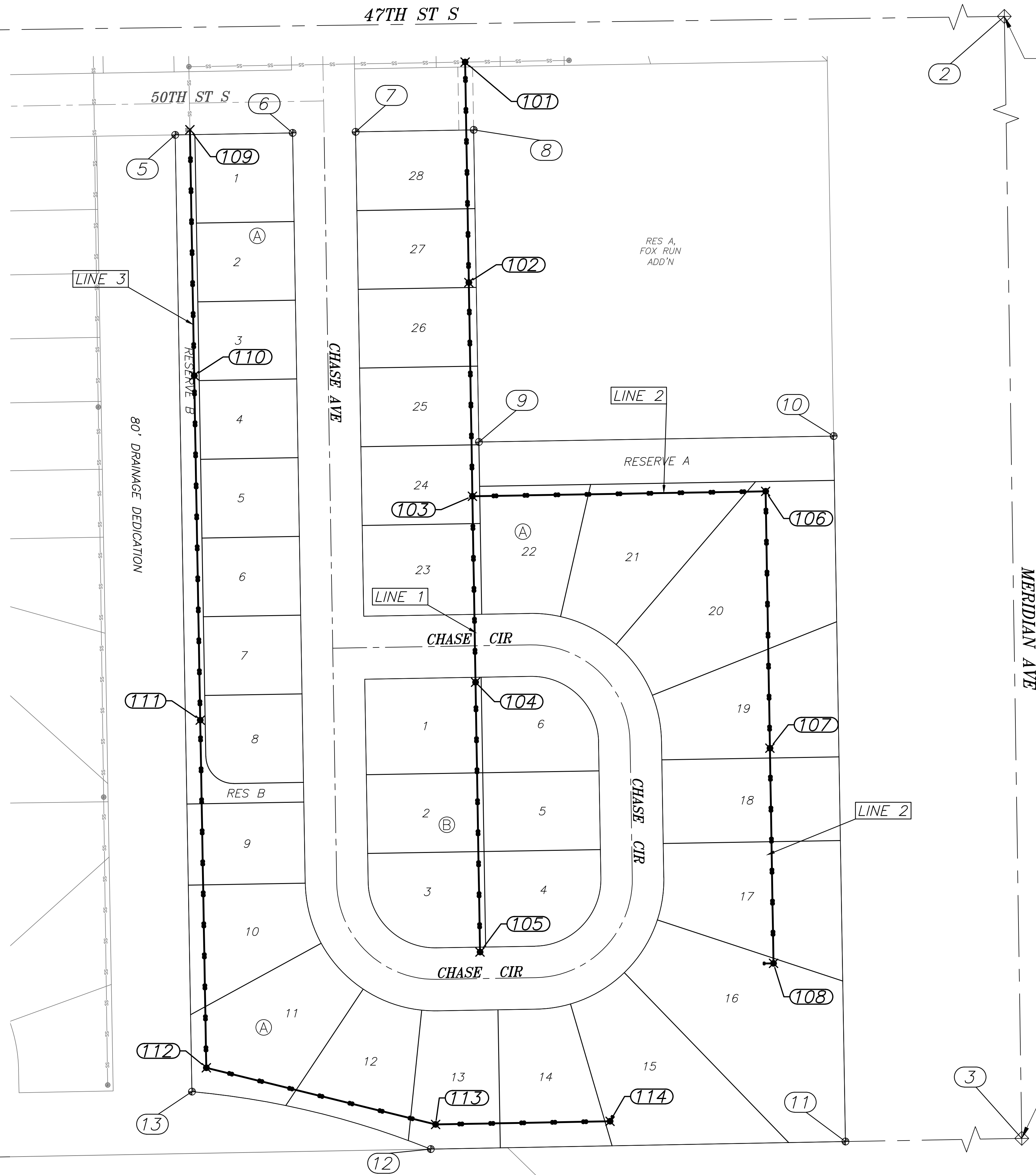
Apr 12, 2023

NW COR, NE 1/4, SEC. 24, T28S, R1-W Found Sedgwick Co. Cap

NE COR, NE 1/4, SEC. 24, T28S, R1-W Found 1/2" Rebar

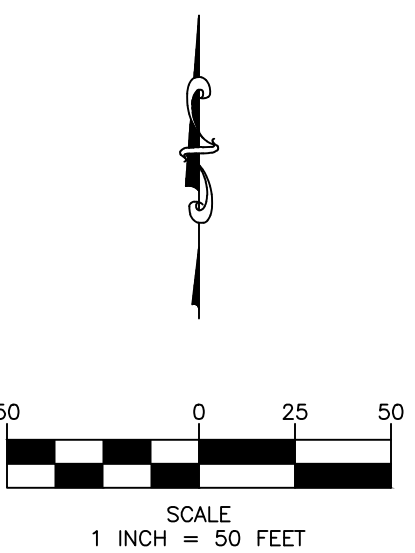
SW COR, NE 1/4, SEC. 24, T28S, R1-W Found 1/2" Rebar

SE COR, NE 1/4, SEC. 24, T28S, R1-W Found 1/2" Rebar



Control Points			
Point #	Raw Description	Northing	Easting
1	SECTION CORNER	1656980.82	1636840.65
2	SECTION CORNER	1657016.34	1639500.21
3	SECTION CORNER	1654369.84	1639540.77
4	SECTION CORNER	1654321.45	1636888.98
5	R4-NO CAP	1655368.48	1637533.84
6	R4-KEMPA	1655370.48	1637653.13
7	R4-KEMPA	1655371.55	1637717.12
8	R4-KEMPA	1655373.56	1637837.10
9	R4-KEMPA	1655056.44	1637842.42
10	R5-KEMPA	1655062.48	1638202.87
11	R4-KEMPA	1654345.64	1638214.87
12	R4-KEMPA	1654337.95	1637793.53
13	R4-KEMPA	1654396.38	1637550.83

Sanitary Sewer Points			
Point #	Raw Description	Northing	Easting
101	0+00.00 SS1	1655442.42	1637828.45
102	2+24.00 SS1	1655218.46	1637832.20
103	4+41.17 SS1	1655001.32	1637835.84
104	6+30.17 SS1	1654812.35	1637839.00
105	9+04.34 SS1	1654538.21	1637843.60
106	2+98.00 SS2	1655006.31	1638133.80
107	5+59.01 SS2	1654745.34	1638138.17
108	7+77.65 SS2	1654526.73	1638141.83
109	0+00.00 SS3	1655373.73	1637548.76
110	2+50.00 SS3	1655123.76	1637553.12
111	6+00.00 SS3	1654773.82	1637559.24
112	9+53.24 SS3	1654420.63	1637565.41
113	11+93.27 SS3	1654363.05	1637798.43
114	13+70.57 SS3	1654366.28	1637975.70



Fox Run 2nd Addition  
Control Map - SS  
Wichita, Kansas

**KEMILLER**  
ENGINEERING  
117 E. Lewis, Wichita, KS 67202 (316)264-0242

KEM PROJ. 21036	DATE 02.2023	SHEET <b>2.0</b>
DESIGN KEM	DRAWN ZJS	



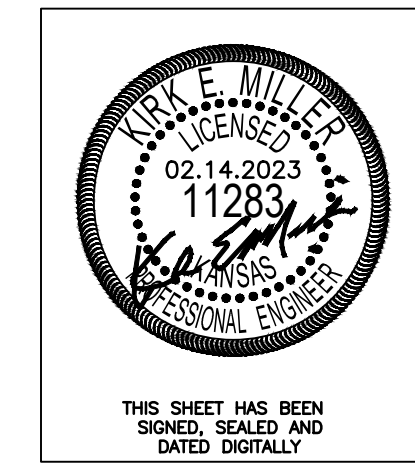
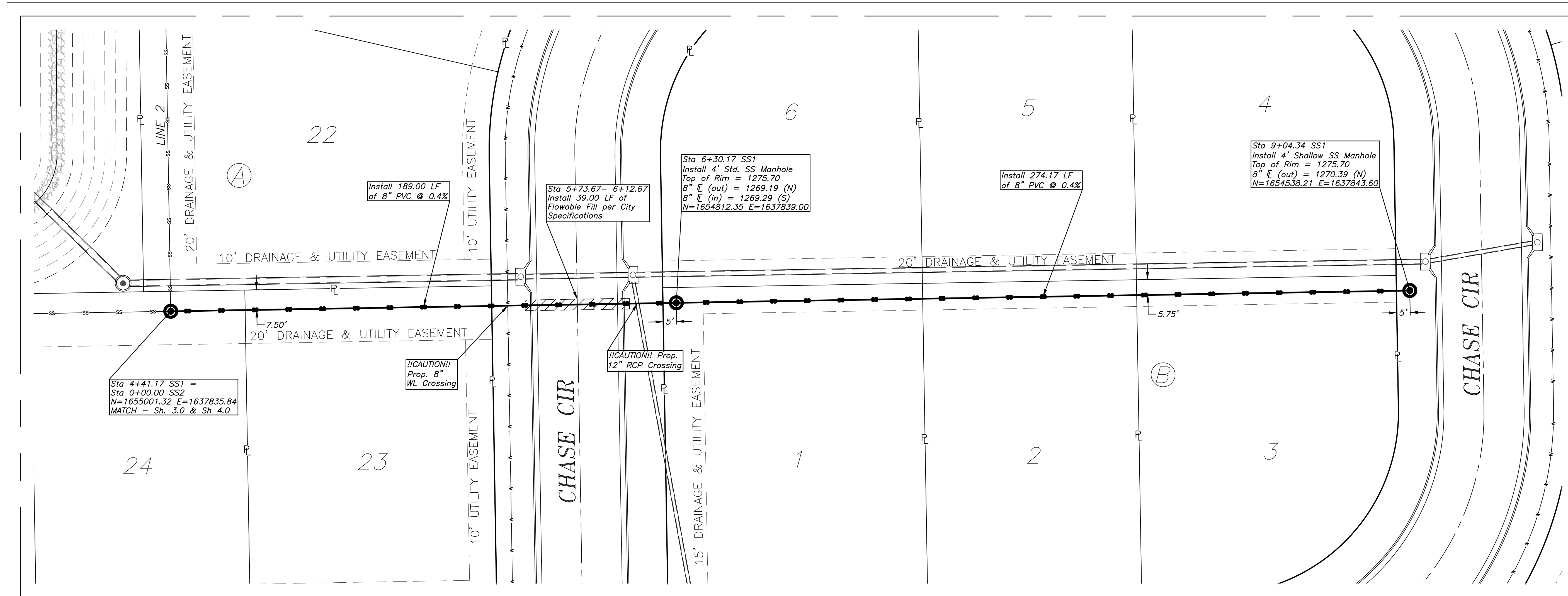
Construction Engineering Division  
 1801 S. McLean Blvd., Suite B  
 Wichita KS, 67213  
 (316) 268-4027

**Sanitary Sewer Riser Table**

**Project Name:** WDS\_SS\_Chase Ave to serve Fox Run 2nd Addn  
**Project Location:** south of 47th St S, west of Meridian Ave  
**Project No:** 468-2022-020089  
**MUNIS No:** E3034/47267822  
**Contractor:** Nowak Construction Co., Inc.  
**Inspector:** Eddie Flores

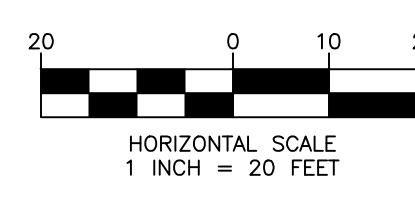
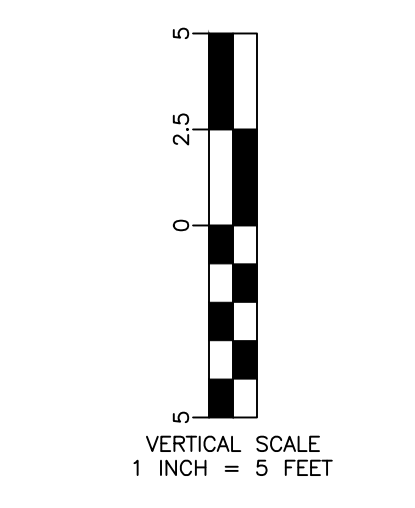
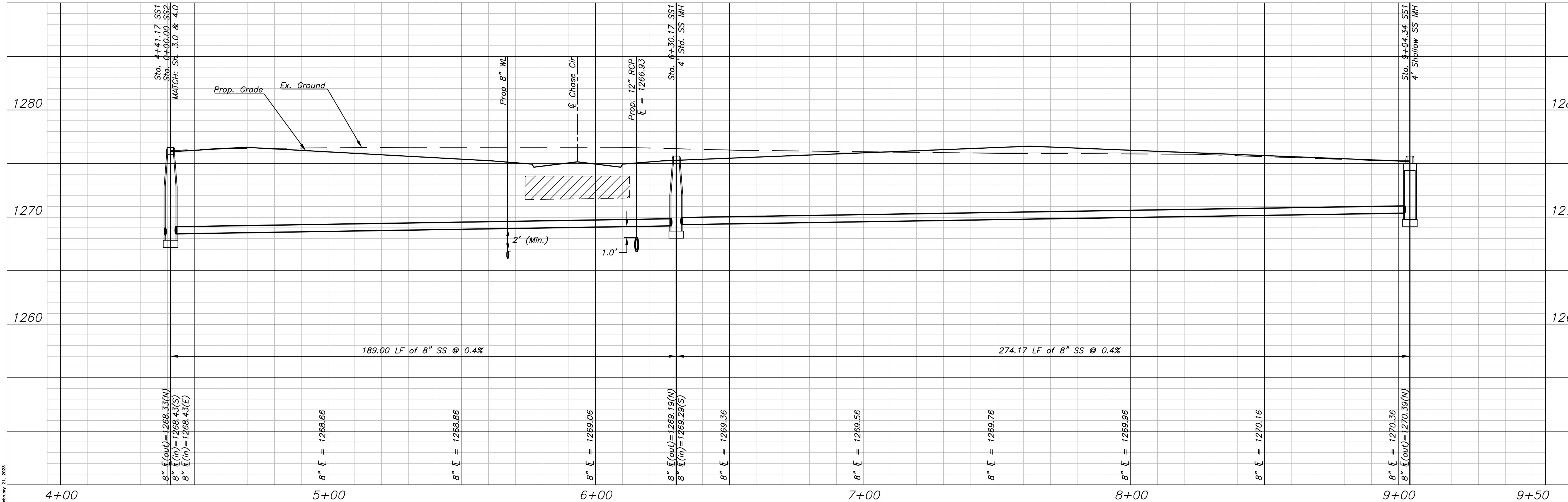
Riser No.	Line No.	Station	Distance from Main to Riser (Lt./Rt.)	Distance from		Comment
				Upstream MH	Downstream MH	
1	2	7+69	10 (W)	MH stub	218'	
2	3	13+70	5.7 ( <del>NW</del> NE)	MH stub	177'	





THIS SHEET HAS BEEN SIGNED, SEALED AND DATED DIGITALLY

LINE 1

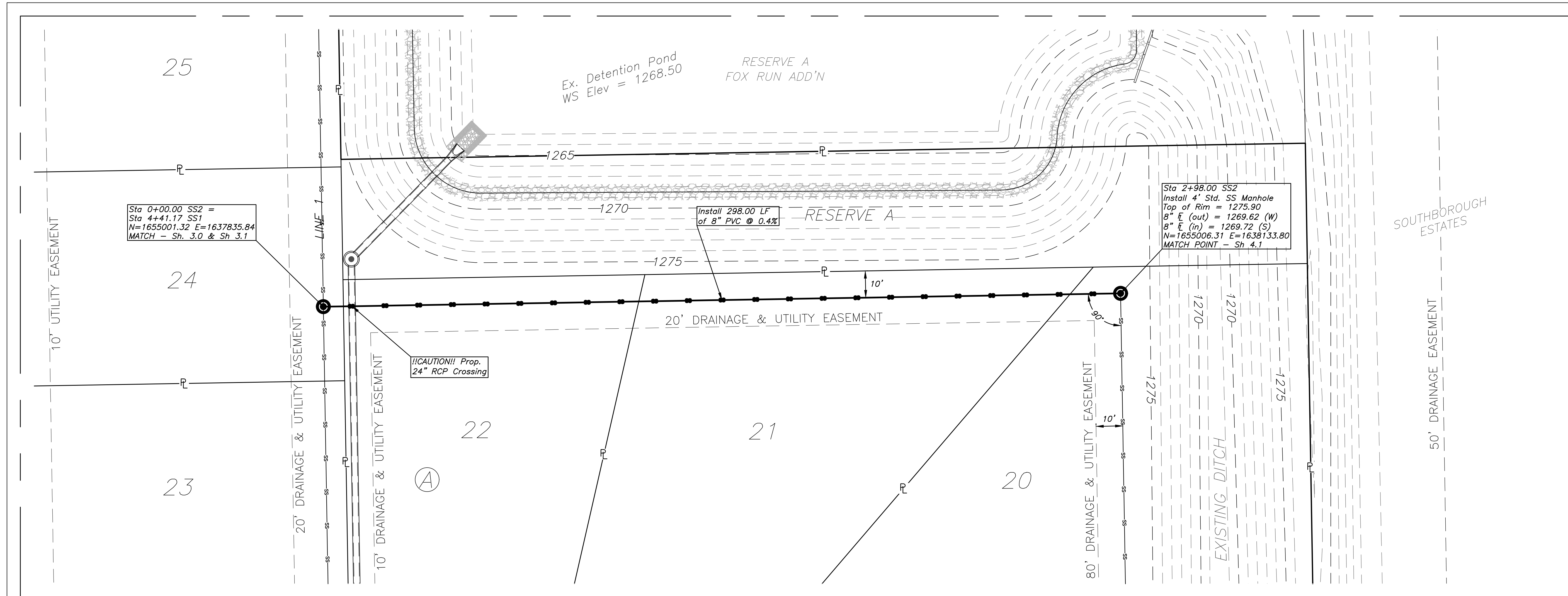


Fox Run 2nd Addition  
SS1 Plan & Profile  
Wichita, Kansas

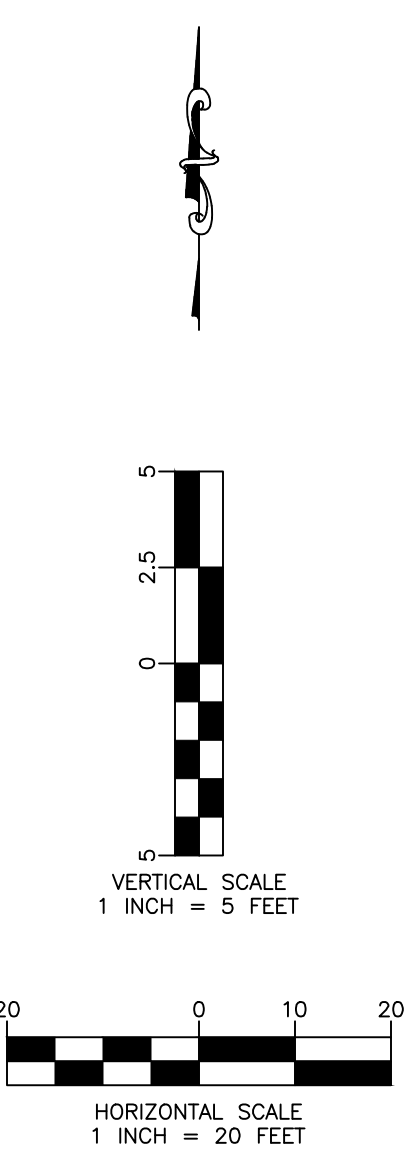
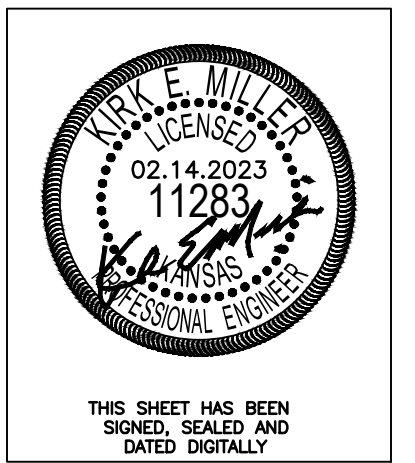
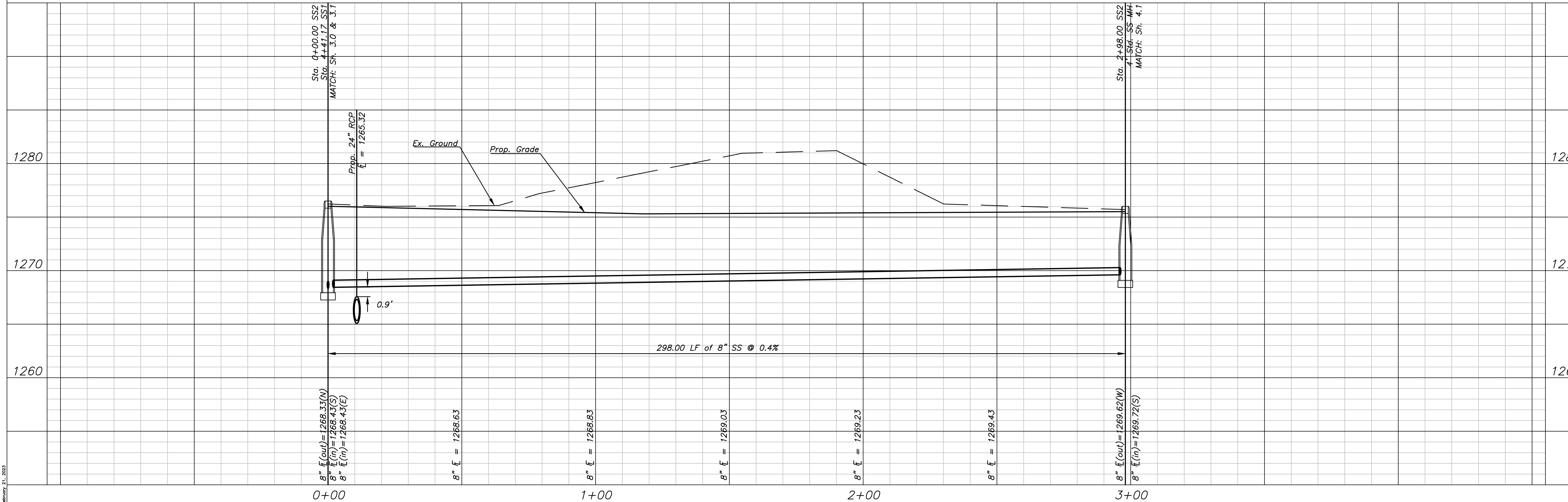


KEM PROJ. 21036	DATE 02.2023	SHEET 3.1
DESIGN KEM	DRAWN ZJS	

February 21, 2023



LINE 2



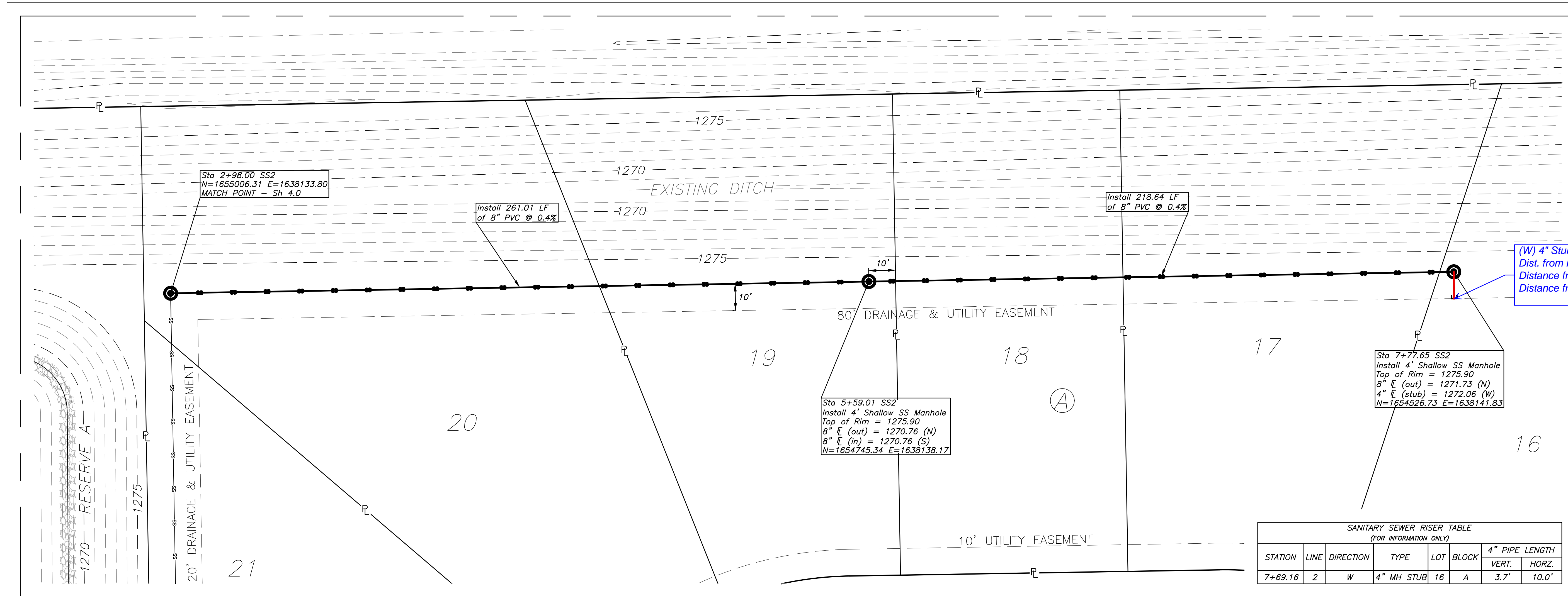
Fox Run 2nd Addition  
SS2 Plan & Profile  
Wichita, Kansas

**KEMILLER**  
ENGINEERING

117 E. Lewis, Wichita, KS 67202 (316)264-0242

KEM PROJ. 21036	DATE 02.2023	SHEET 4.0
DESIGN KEM	DRAWN ZJS	

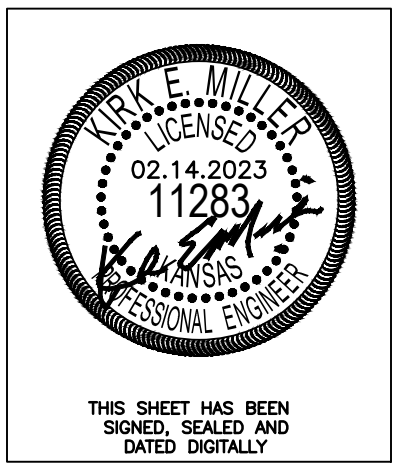
February 21, 2023



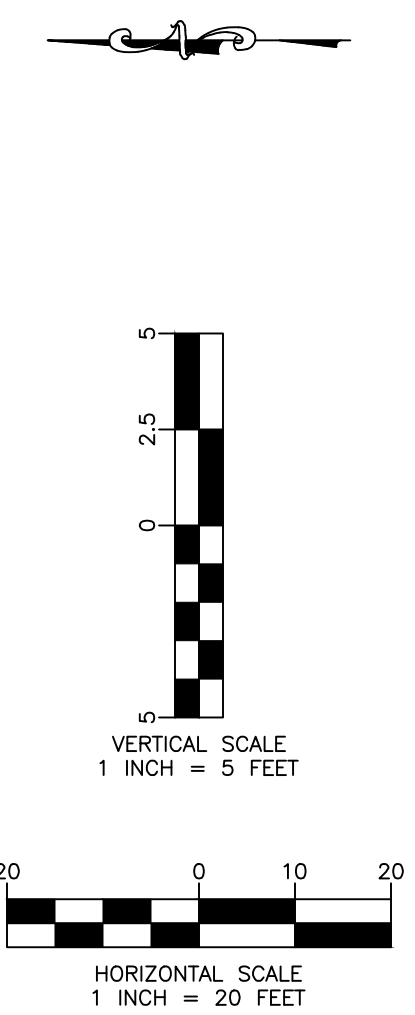
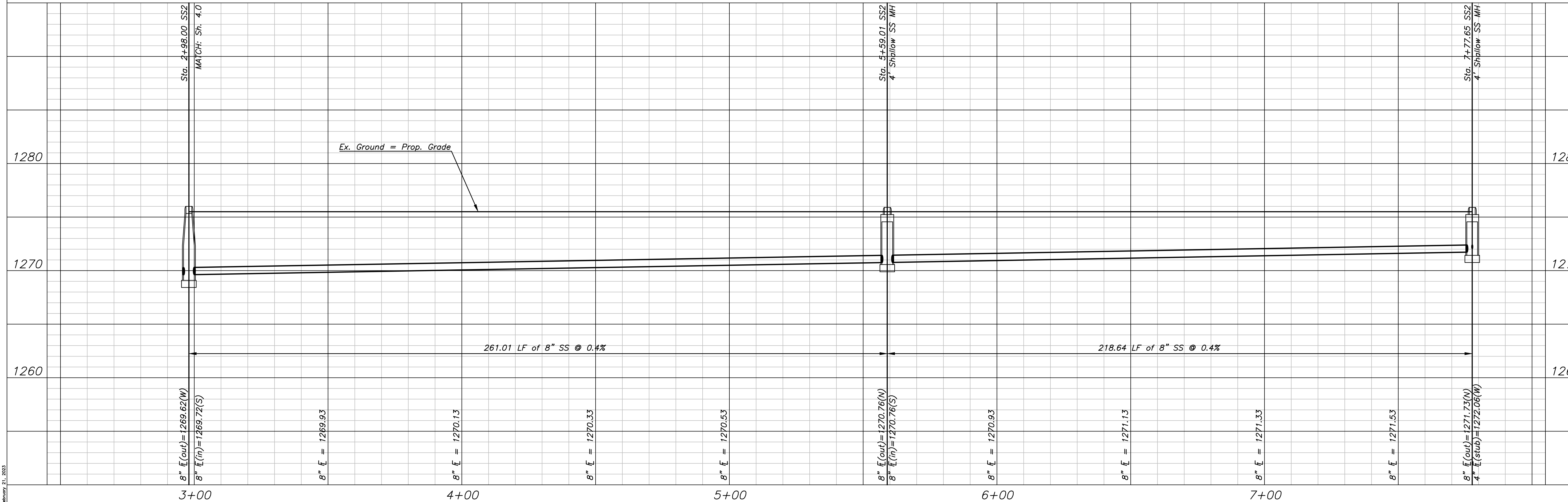
(W) 4" Stub  
 Dist. from Main to Riser: 10'W  
 Distance from USMH: @ mh  
 Distance from DSMH: 218'

SANITARY SEWER RISER TABLE  
 (FOR INFORMATION ONLY)

STATION	LINE	DIRECTION	TYPE	LOT	BLOCK	4" PIPE LENGTH	
						VERT.	HORZ.
7+69.16	2	W	4" MH STUB	16	A	3.7'	10.0'



LINE 2

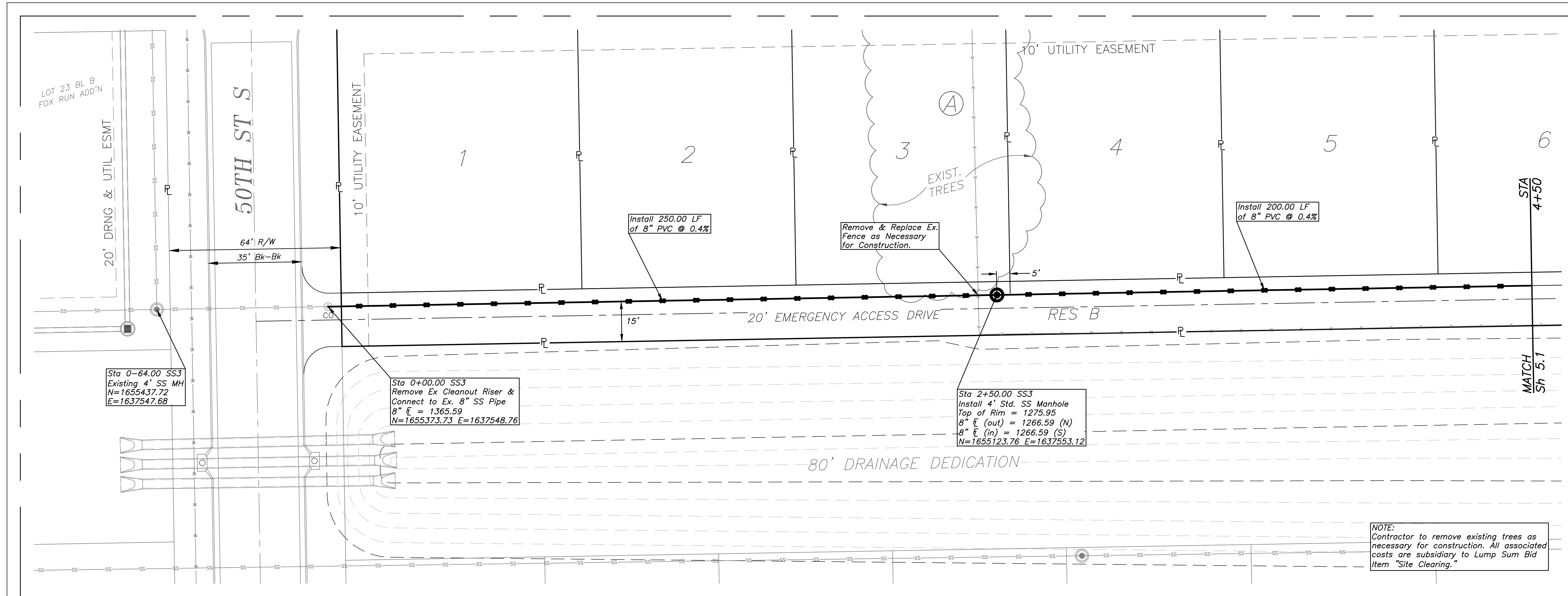


Fox Run 2nd Addition  
 SS2 Plan & Profile  
 Wichita, Kansas

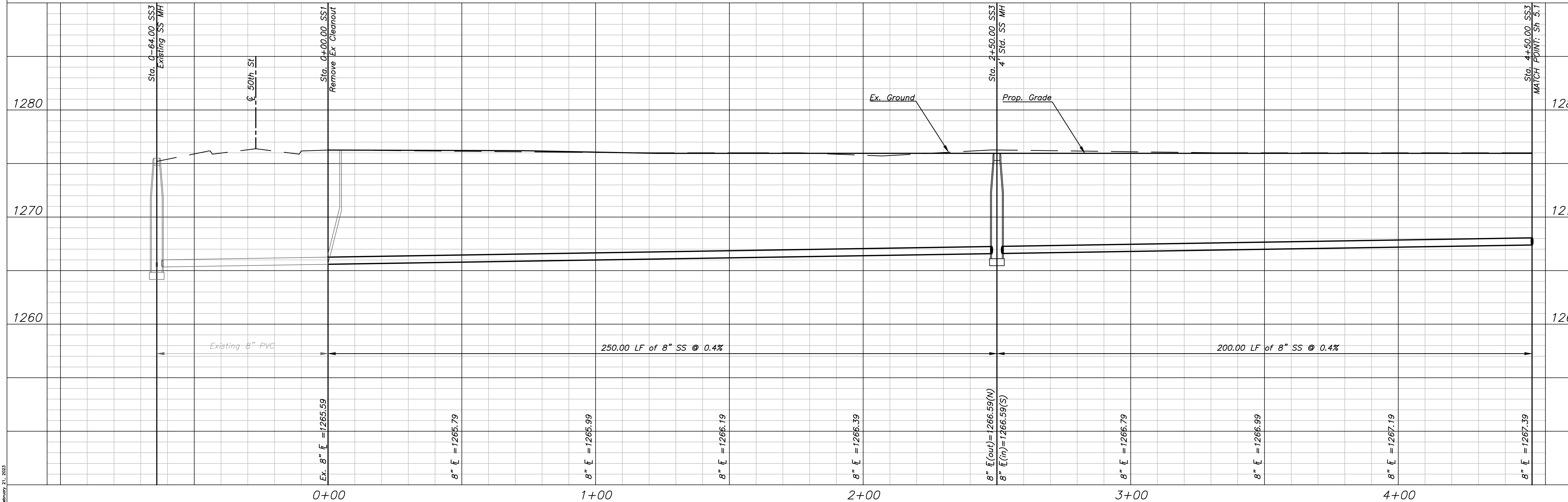
**KEMILLER**  
 ENGINEERS & ARCHITECTS  
 117 E. Lewis, Wichita, KS 67202 (316)264-0242

KEM PROJ. 21036	DATE 02.2023	SHEET 4.1
DESIGN KEM	DRAWN ZJS	

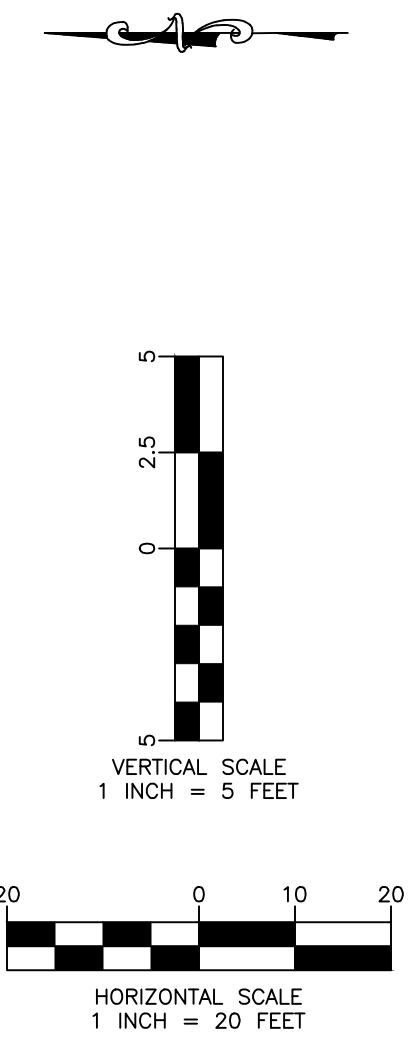
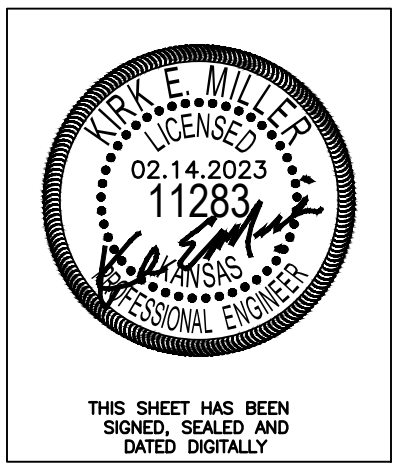
February 21, 2023



LINE 3



NOTE:  
Contractor to remove existing trees as necessary for construction. All associated costs are subsidiary to Lump Sum Bid Item "Site Clearing."

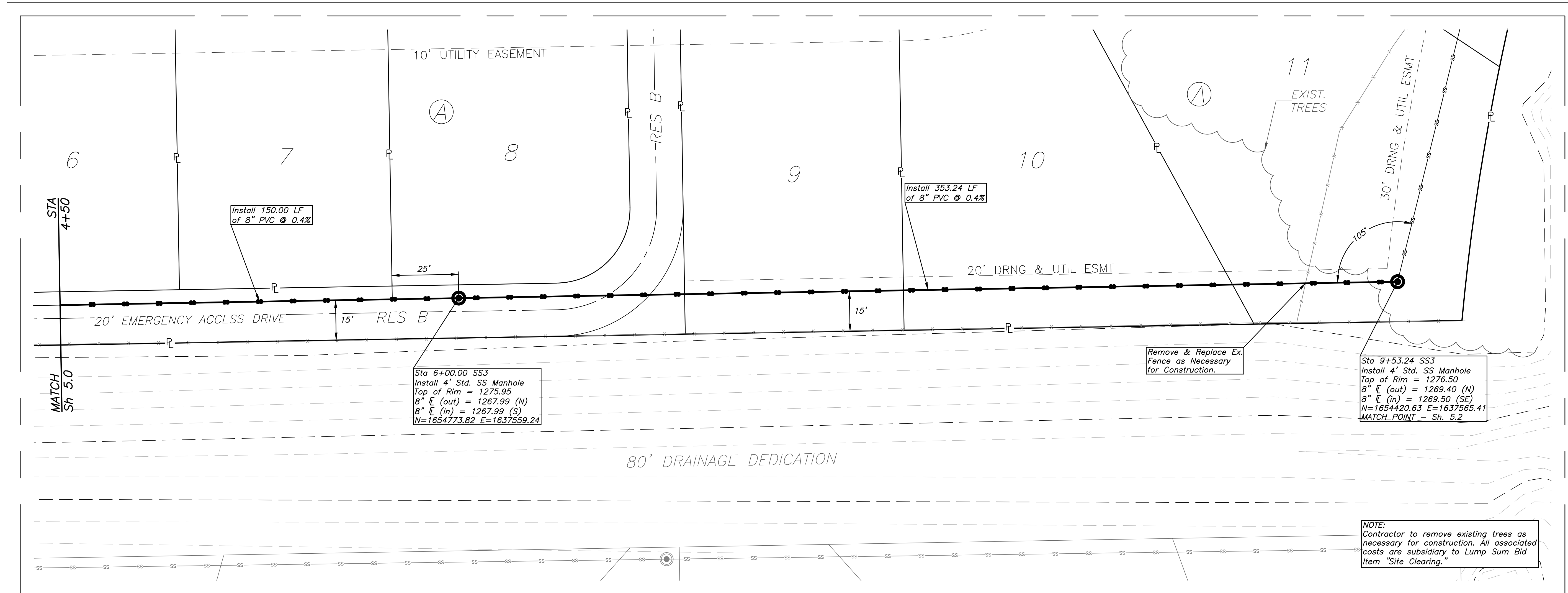


Fox Run 2nd Addition  
SS3 Plan & Profile  
Wichita, Kansas

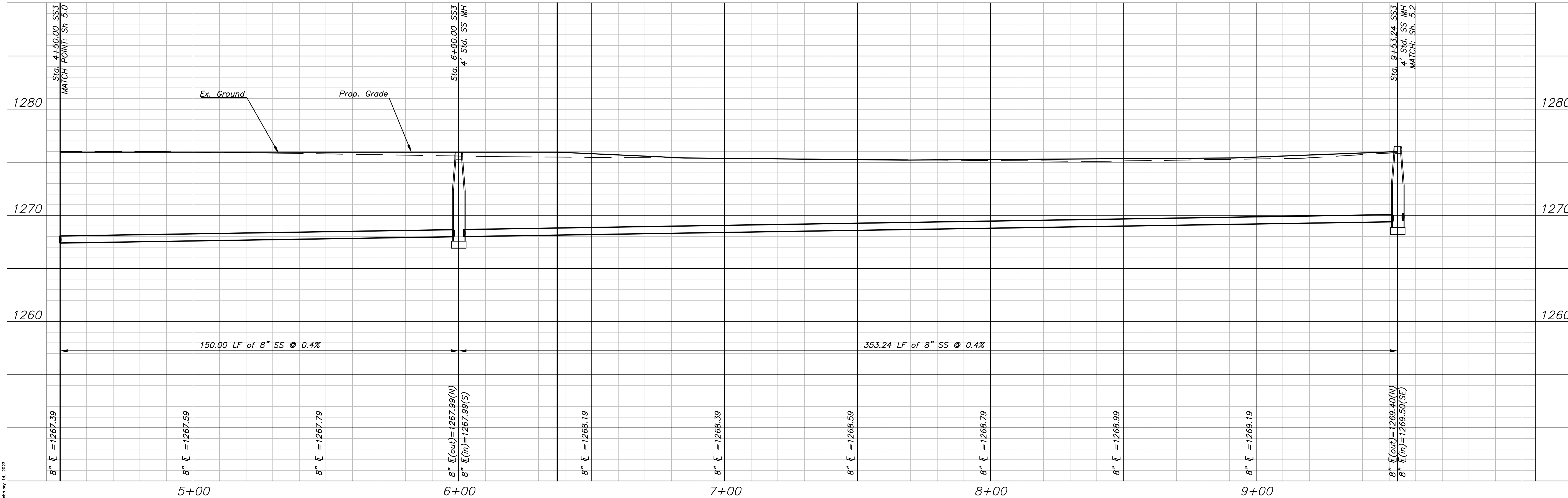
**KEMILLER**  
ENGINEERS & ARCHITECTS  
117 E. Lewis, Wichita, KS 67202 (316)264-0242

KEM PROJ. 21036	DATE 02.2023	SHEET 5.0
DESIGN KEM	DRAWN ZJS	

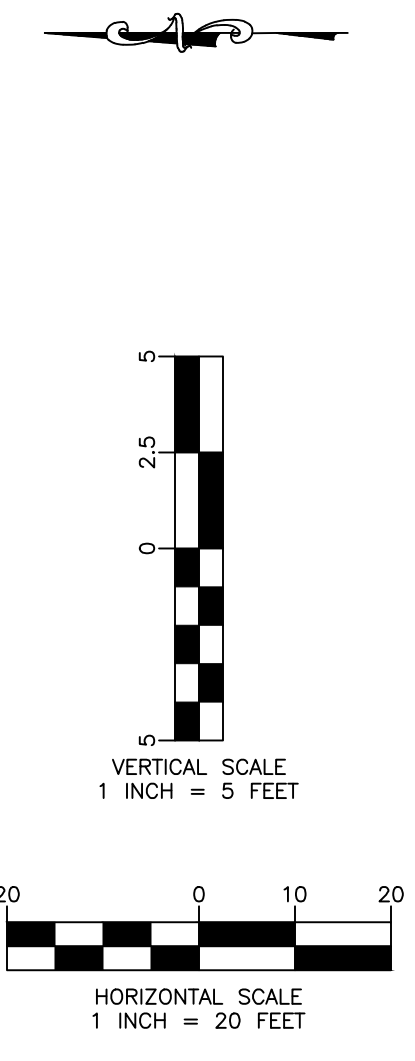
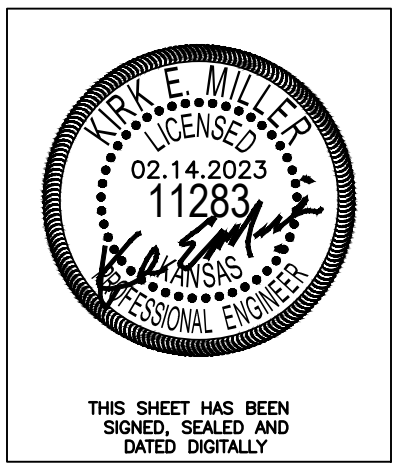
February 21, 2023



LINE 3



NOTE:  
Contractor to remove existing trees as necessary for construction. All associated costs are subsidiary to Lump Sum Bid Item "Site Clearing."

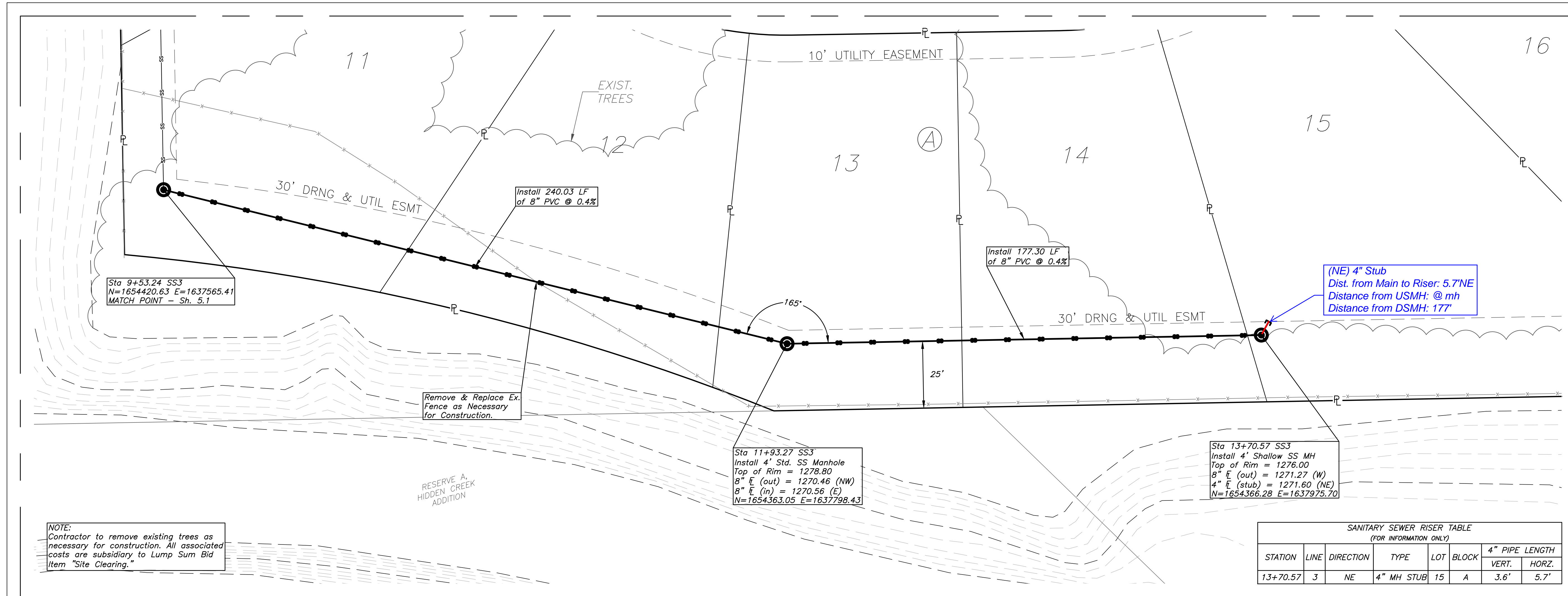


Fox Run 2nd Addition  
SS3 Plan & Profile  
Wichita, Kansas

**KEMILLER**  
ENGINEERS & ARCHITECTS  
117 E. Lewis, Wichita, KS 67202 (316)264-0242

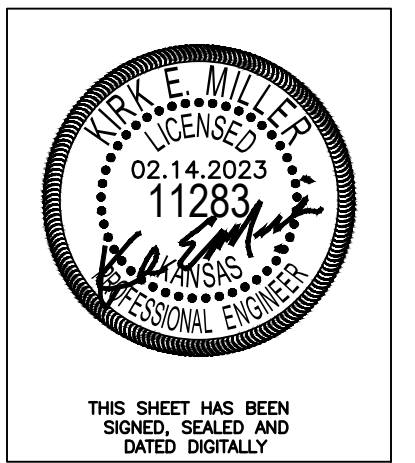
KEM PROJ. 21036	DATE 02.2023	SHEET 5.1
DESIGN KEM	DRAWN ZJS	

February 14, 2023

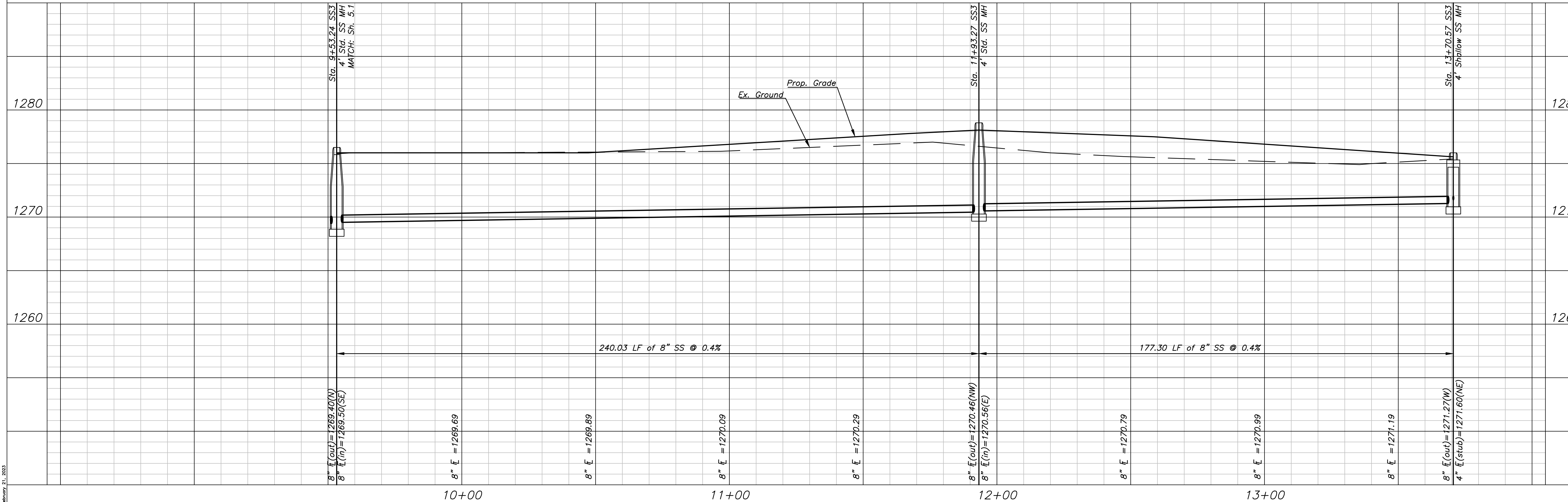


SANITARY SEWER RISER TABLE  
(FOR INFORMATION ONLY)

STATION	LINE	DIRECTION	TYPE	LOT	BLOCK	4" PIPE LENGTH	
						VERT.	HORZ.
13+70.57	3	NE	4" MH STUB	15	A	3.6'	5.7'



LINE 3



Fox Run 2nd Addition  
SS3 Plan & Profile  
Wichita, Kansas

KEMILLER  
ENGINEERS & ARCHITECTS  
117 E. Lewis, Wichita, KS 67202 (316)264-0242

KEM PROJ. 21036 DATE 02.2023 SHEET 5.2  
DESIGN KEM DRAWN ZJS

February 21, 2023