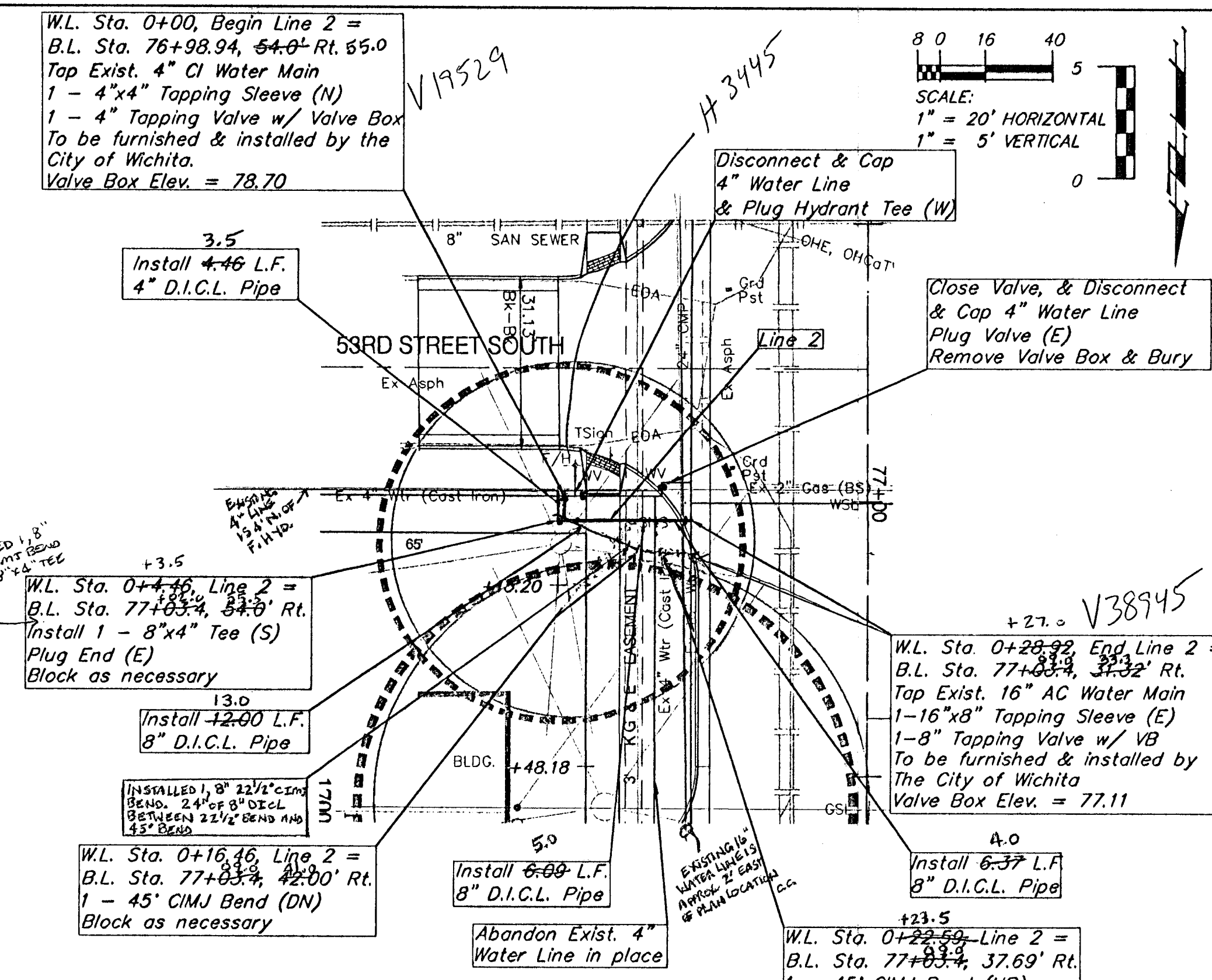
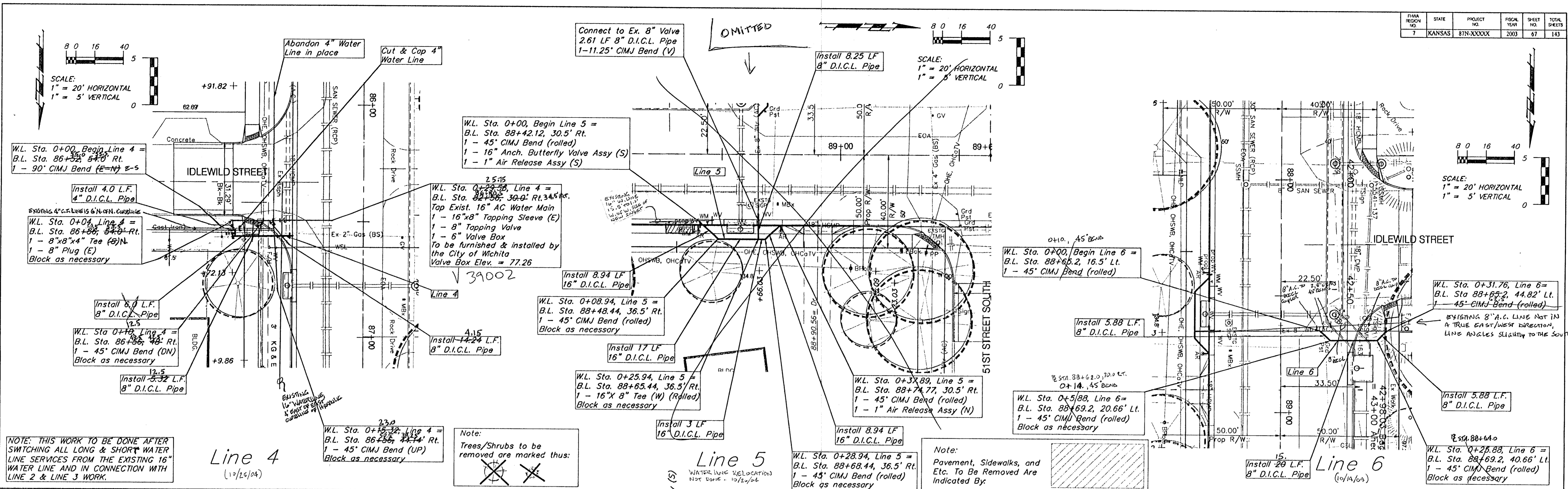


Note:
Trees/Shrubs to be removed are marked thus:

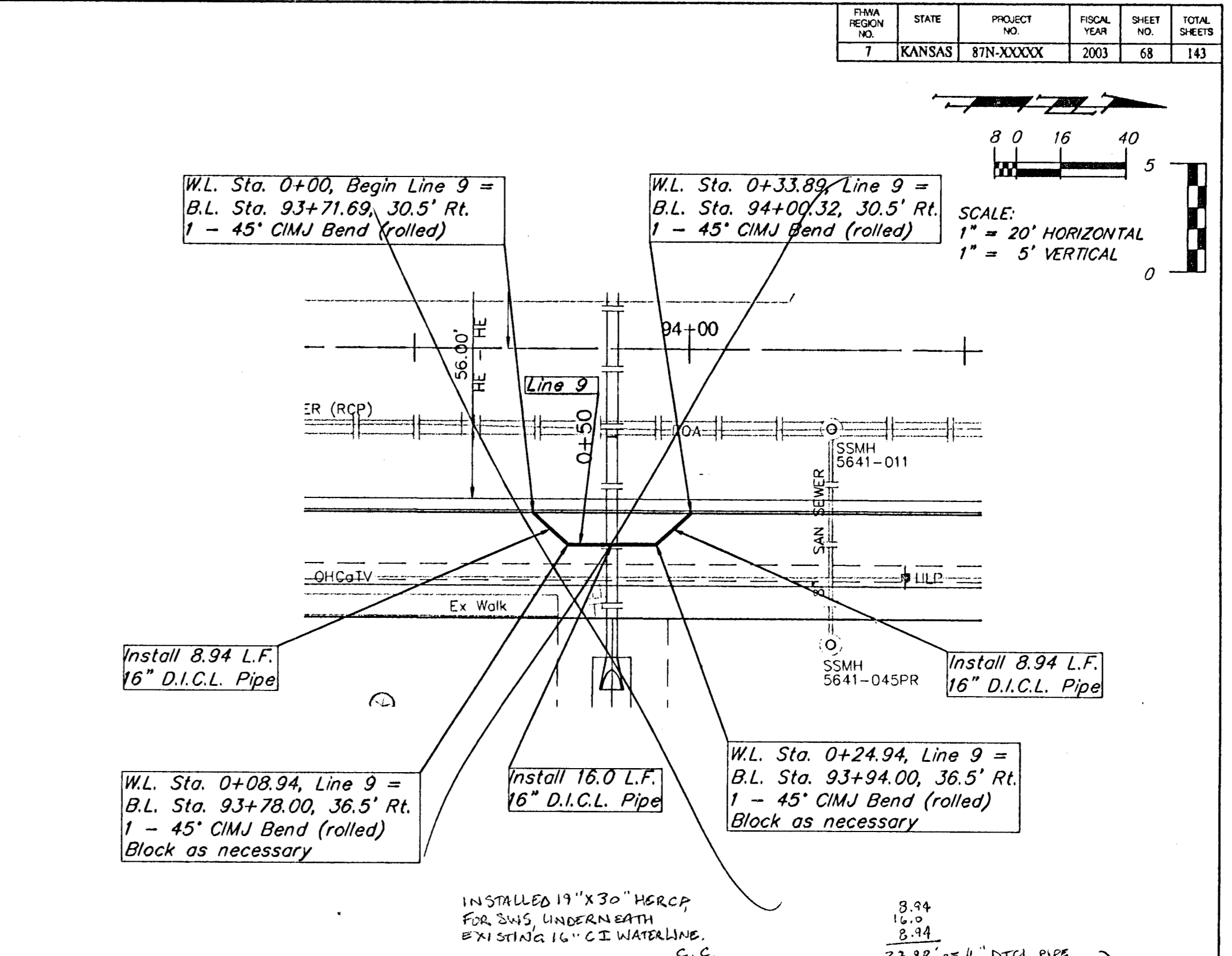
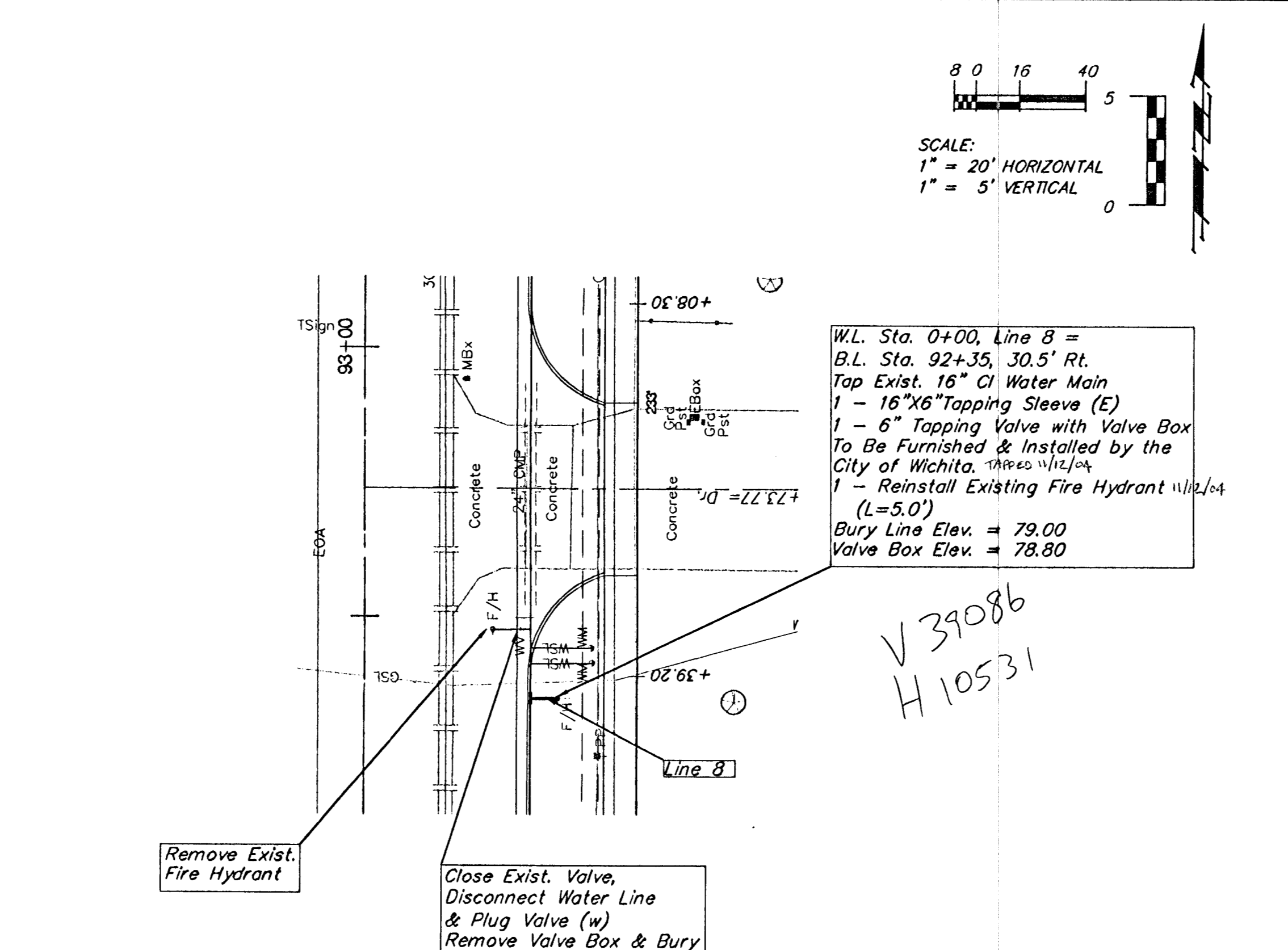
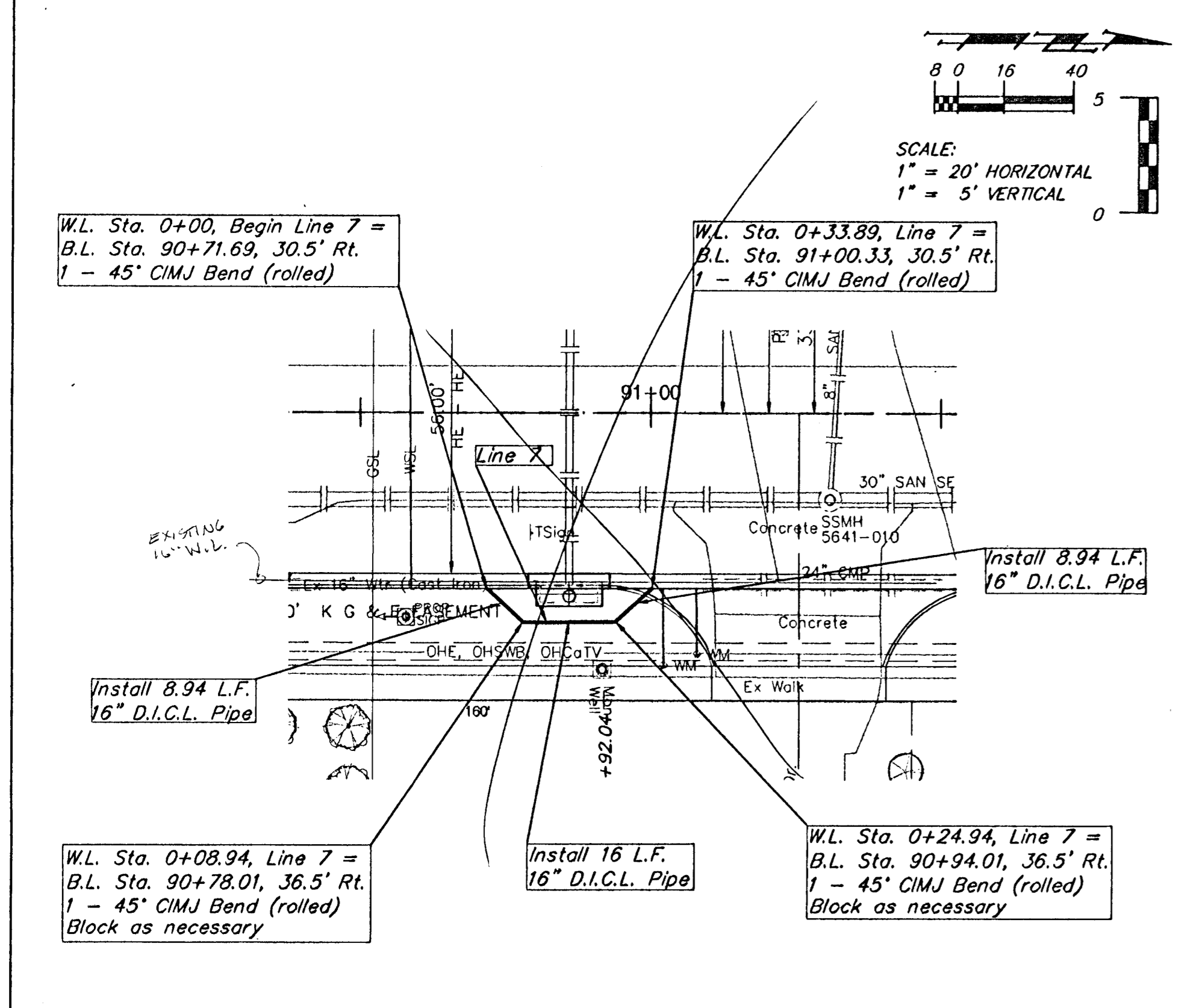
Note:
Pavement, Sidewalks, and Etc. To Be Removed Are Indicated By:

FH 2





Line	Station	Waterline Relocation	Notes
Line 4	0+00	Begin Line 4 = B.L. Sta. 86+52.84 Rt. 1 - 90° CIMJ Bend (E-N) E-S	
	0+04	Line 4 = B.L. Sta. 86+58.54 Rt. 1 - 8\"/>	



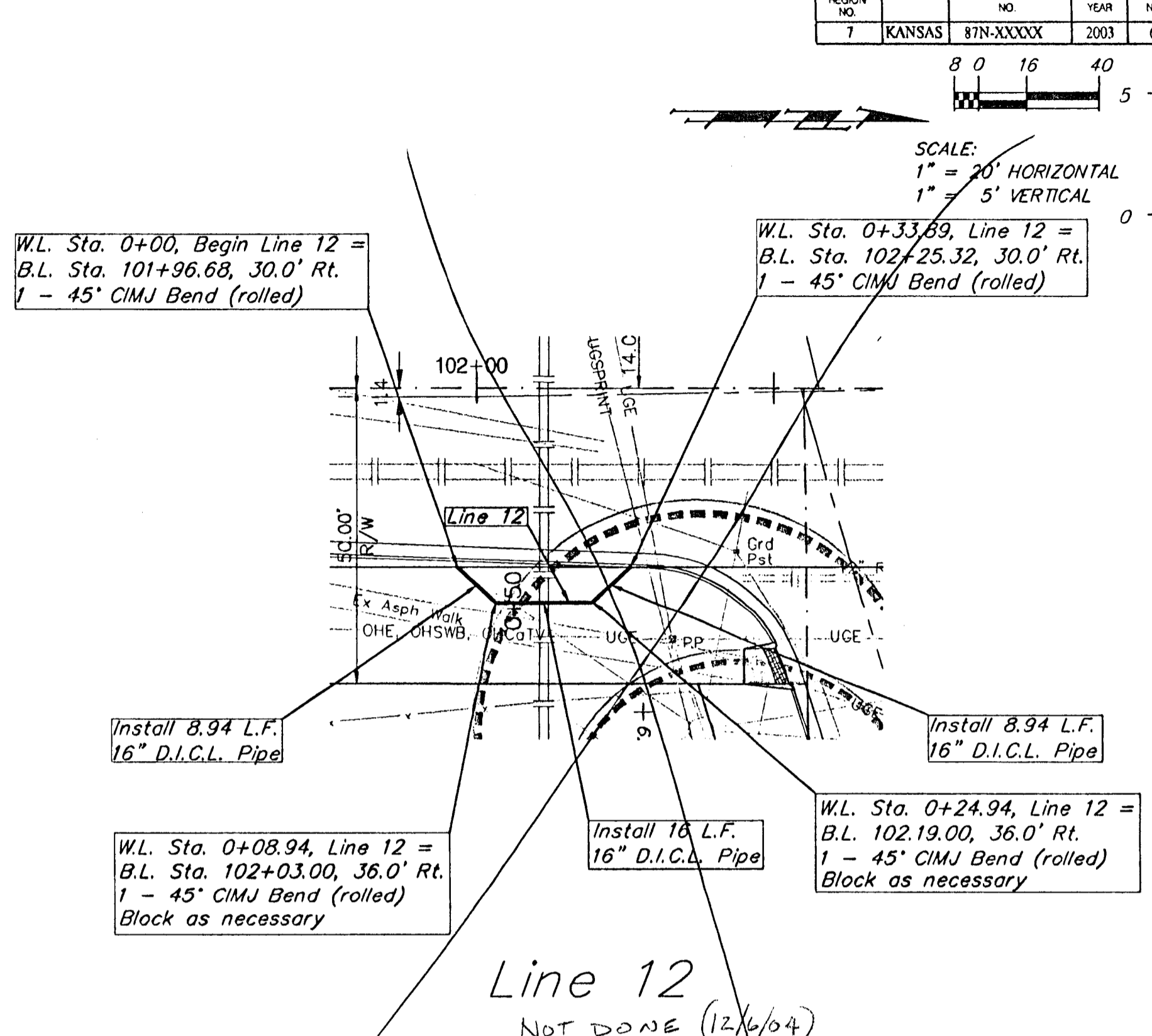
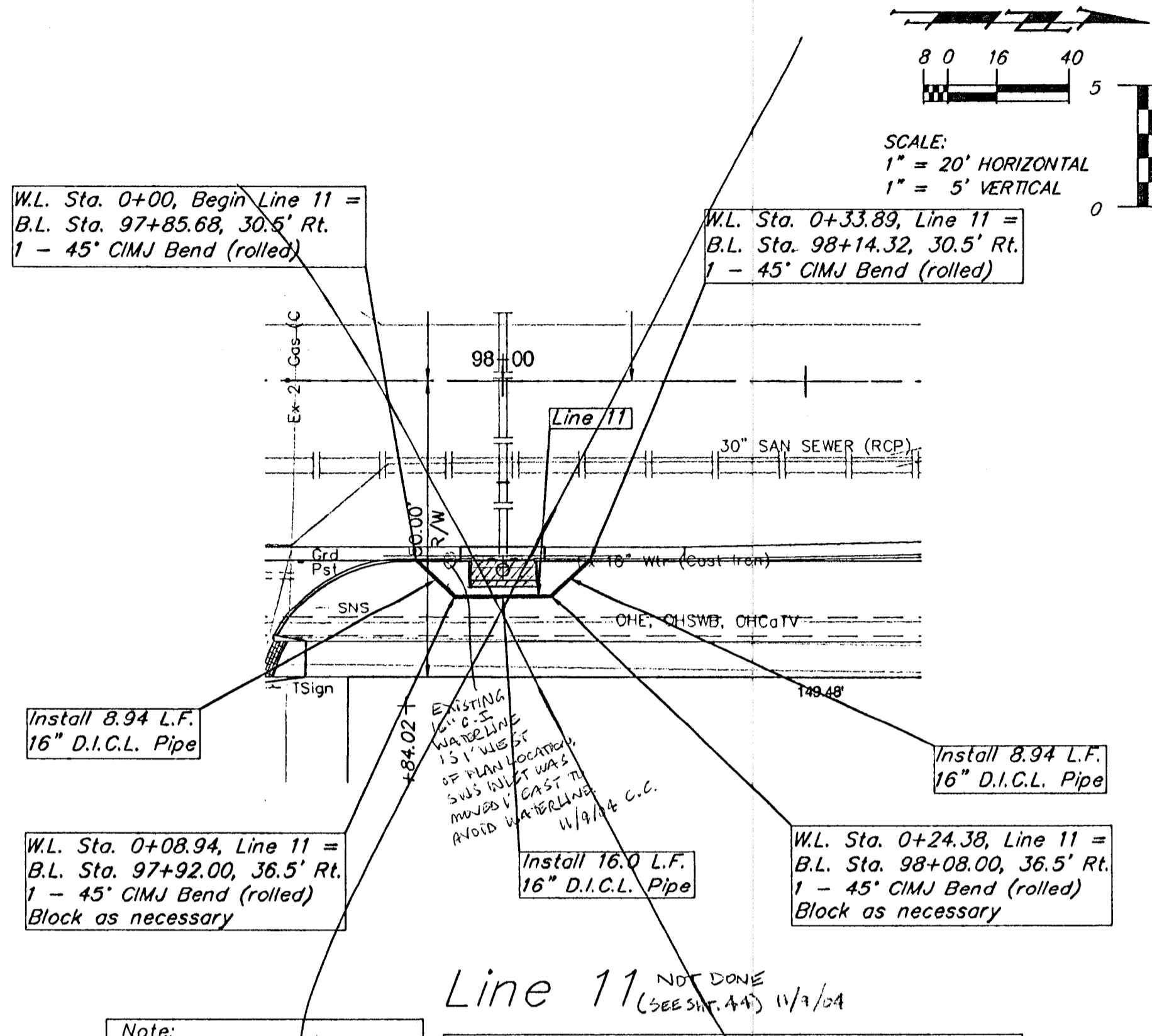
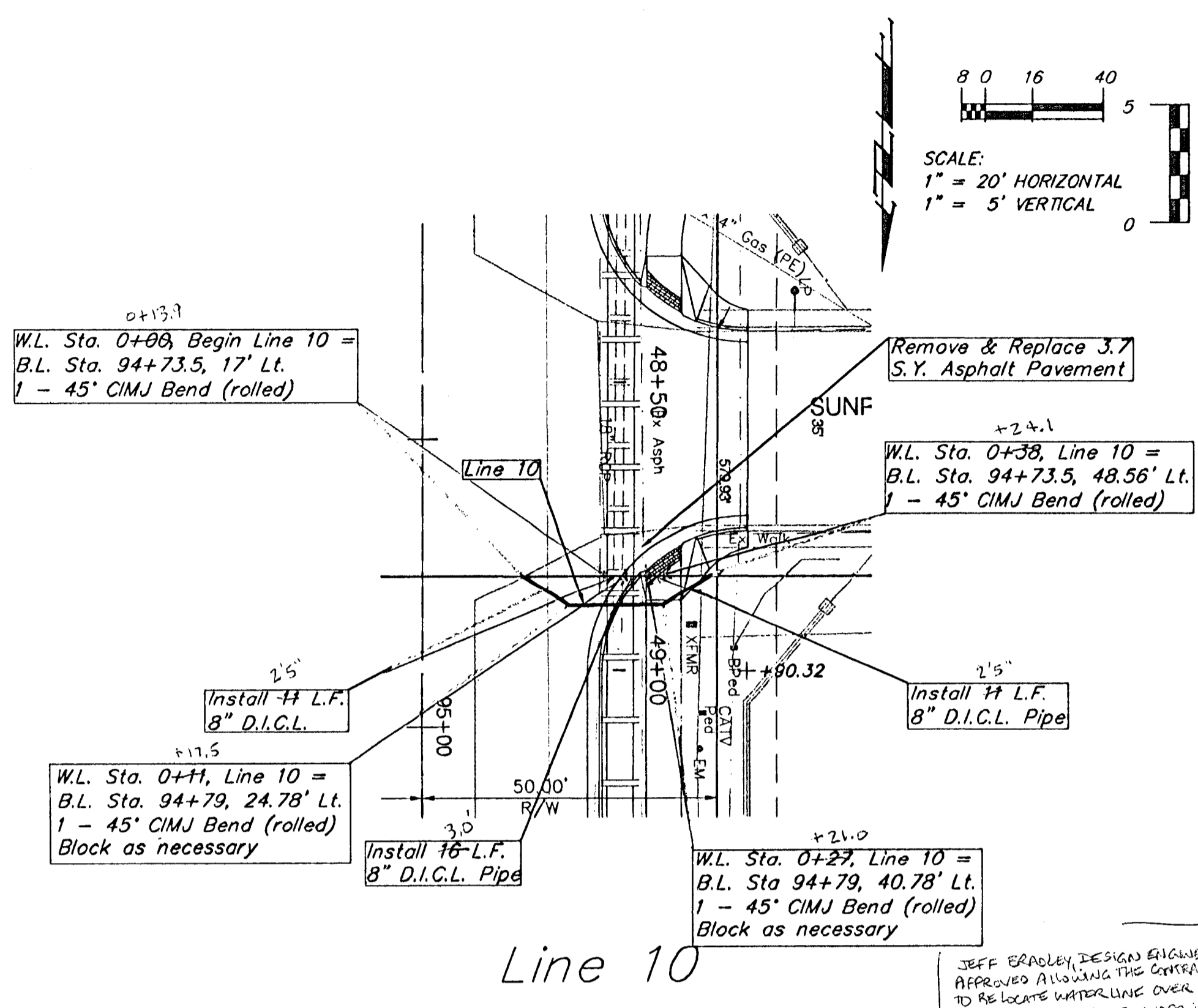
Line 7
10/28/04
WATERLINE RELOCATION NOT DONE. EXISTING 16" WATERLINE IS 2' WEST OF PLAIN LOCATION. NEW SWIS INLET PROVIDED 6" ST. 25' TO AVOID WATERLINE AND 15" SWIS FIRE WLS RAISED 3" TO PROVIDE CLEARANCE OVER WATERLINE. SWIS FIRE SUPPORTED BY INLET, MINIMAL RISK OF DISCONNECT AT WATERLINE. C.C.

Line 8
DONE 11/12/04
C.C.
Note: Trees/Shrubs to be removed are marked thus:

Note: Pavement, Sidewalks, and Etc. To Be Removed Are Indicated By:

Line 9
NOT DONE
(SEE SHEET 44) 11/3/04
INSTALLED 19" X 30" HBRCP FOR SWIS UNDERNEATH EXISTING 16" C.I. WATERLINE. C.C.
3.94
16.34
8.34
33.38' OF 16" DI. C.I. PIPE } OMITTED
4 16" C.I. 45° BENDS } ADDED
PLUS: RISE/LOSS, SUPPORT BLOCKS }
1, 4" DIAM. PRE-CAST M.H. }

	<p>W.L. Sta. 0+00, Begin Line 7 = B.L. Sta. 90+71.69, 30.5' Rt. 1 - 45" C.I.M.J. Bend (rolled)</p> <p>W.L. Sta. 0+08.94, Line 7 = B.L. Sta. 90+78.01, 36.5' Rt. 1 - 45" C.I.M.J. Bend (rolled)</p> <p>W.L. Sta. 0+24.94, Line 7 = B.L. Sta. 93+94.00, 36.5' Rt. 1 - 45" C.I.M.J. Bend (rolled)</p> <p>W.L. Sta. 0+33.89, Line 7 = B.L. Sta. 91+00.33, 30.5' Rt. 1 - 45" C.I.M.J. Bend (rolled)</p> <p>Proposed 15" RCP</p> <p>Prop. Elev. = 74.65</p> <p>Remove Exist. Pipe Exist. 16" C.I. Water Line TP = 74.87 74.31</p>	<p>Line 7</p>	<p>W.L. Sta. 0+00, Line 8 = B.L. Sta. 92+35, 30.5' Rt. Tap Exist. 16" C.I. Water Main 1 - 16" Tapping Sleeve (E) 1 - 6" Tapping Valve with Valve Box To Be Furnished & Installed by the City of Wichita, 11/12/04 1 - Reinstall Existing Fire Hydrant (L=5.0) Bury Line Elev. = 79.00 Valve Box Elev. = 78.80</p> <p>Prop. Elev. = 78.29</p>	<p>Line 8</p>	<p>W.L. Sta. 0+00, Begin Line 9 = B.L. Sta. 93+71.69, 30.5' Rt. 1 - 45" C.I.M.J. Bend (rolled)</p> <p>W.L. Sta. 0+08.94, Line 9 = B.L. Sta. 93+78.00, 36.5' Rt. 1 - 45" C.I.M.J. Bend (rolled)</p> <p>Proposed 24" RCP</p> <p>Prop. Elev. = 78.00</p> <p>Remove Exist. Pipe Exist. 16" C.I. Water Line TP = 75.22</p> <p>NEW 19" X 30" HBRCP</p>	<p>Line 9</p>
80	80	80	80	80	80	
75	75	75	75	75	75	
70	70	70	70	70	70	
65	65	65	65	65	65	



JEFF ERDLEY DESIGN ENGINEER
APPROVED ALLOWING THE CONTRACTOR
TO RE-LOCATE WATER LINE OVER NEW
SWS PIPE INSTEAD OF UNDER IT.
10/15/04 C.C.

Note:
Trees/Shrubs to be removed are marked thus:

Note:
Pavement, Sidewalks, and Etc. To Be Removed Are Indicated By:

CHANGED PRESENT OF GRACE ON NEW 18" SWS PIPE TO GO OVER EXISTING 16" C.I. WATER LINE WITH 4' OF CLEARANCE. PUT CRIBLE BLOCKS ON EITHER SIDE OF WATER LINE TO HELP DISTRIBUTE POINT LOAD.

C.C.

85	85	85	85	85	85
80	80	80	80	80	80
75	75	75	75	75	75
70	70	70	70	70	70
65	65	65	65	65	65

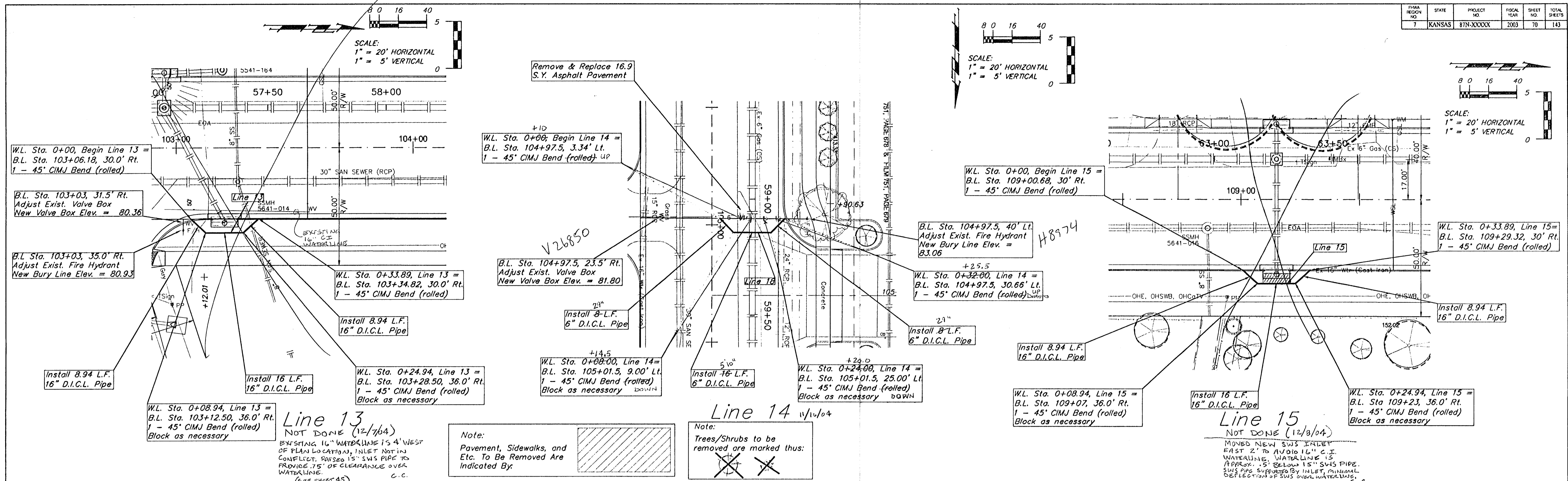
PROJECT NUMBER 448-89923	SHEET NAME water05	ENGINEERING DIRECTORY F:\Eng\Hydraulic Ph 2\Wtr
DESIGN KK	DRAWN SMD	APPROVED JFB
DATE March 04	SCALE noted	BAUGHMAN NO 99-09-E454

CAPITAL IMPROVEMENT PROJECT
Hydraulic Waterline Relocations
Line 10, 11, & 12
From 47th Street South to Wichita City Limits

BAUGHMAN COMPANY, P.A.
ENGINEERING, SURVEYING, & PLANNING
316-282-7271 • 315 ELLIS • WICHITA, KANSAS 67211

2.A SSP09

FHWA REGION NO.	STATE	PROJECT NO.	FISCAL YEAR	SHEET NO.	TOTAL SHEETS
7	KANSAS	87N-XXXXX	2003	70	143



85	85	90	85	90	90	90
80	80	85	80	85	85	85
75	75	80	75	80	80	80
70	70	75	70	75	75	75
65	65	70	65	70	70	70

Line 13
 Line 14
 Line 15

DESIGN KK	DRAWN SMD	APPROVED JFB	DATE March 04	SCALE noted	BAUGHMAN NO 99-09-E454
PROJECT NUMBER 448-89923			SHEET NAME Water06		
ENGINEERING DIRECTORY F:Eng\Hydraulic Ph 2\Wtr			CAPITAL IMPROVEMENT PROJECT Hydraulic Waterline Relocations Line 13, 14, & 15 From 47th Street South to Wichita City Limits		
BAUGHMAN COMPANY, P.A. ENGINEERING, SURVEYING, & PLANNING 316-282-7271 • 315 ELLIS • WICHITA, KANSAS 67211					SHEET 70 OF 143