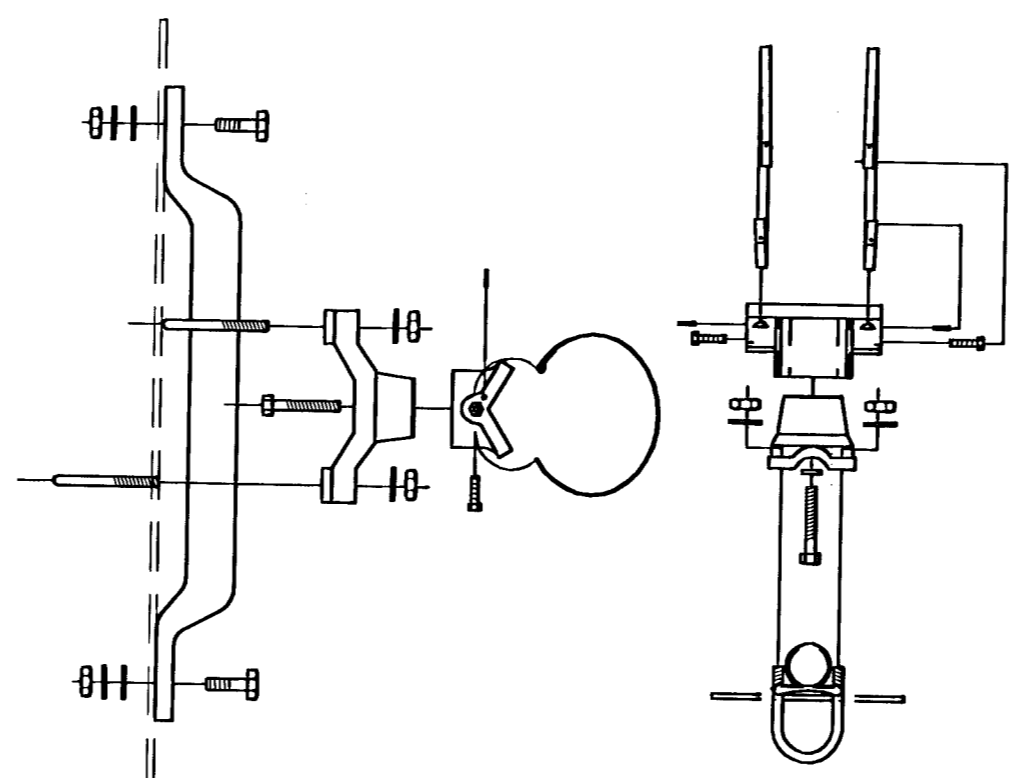
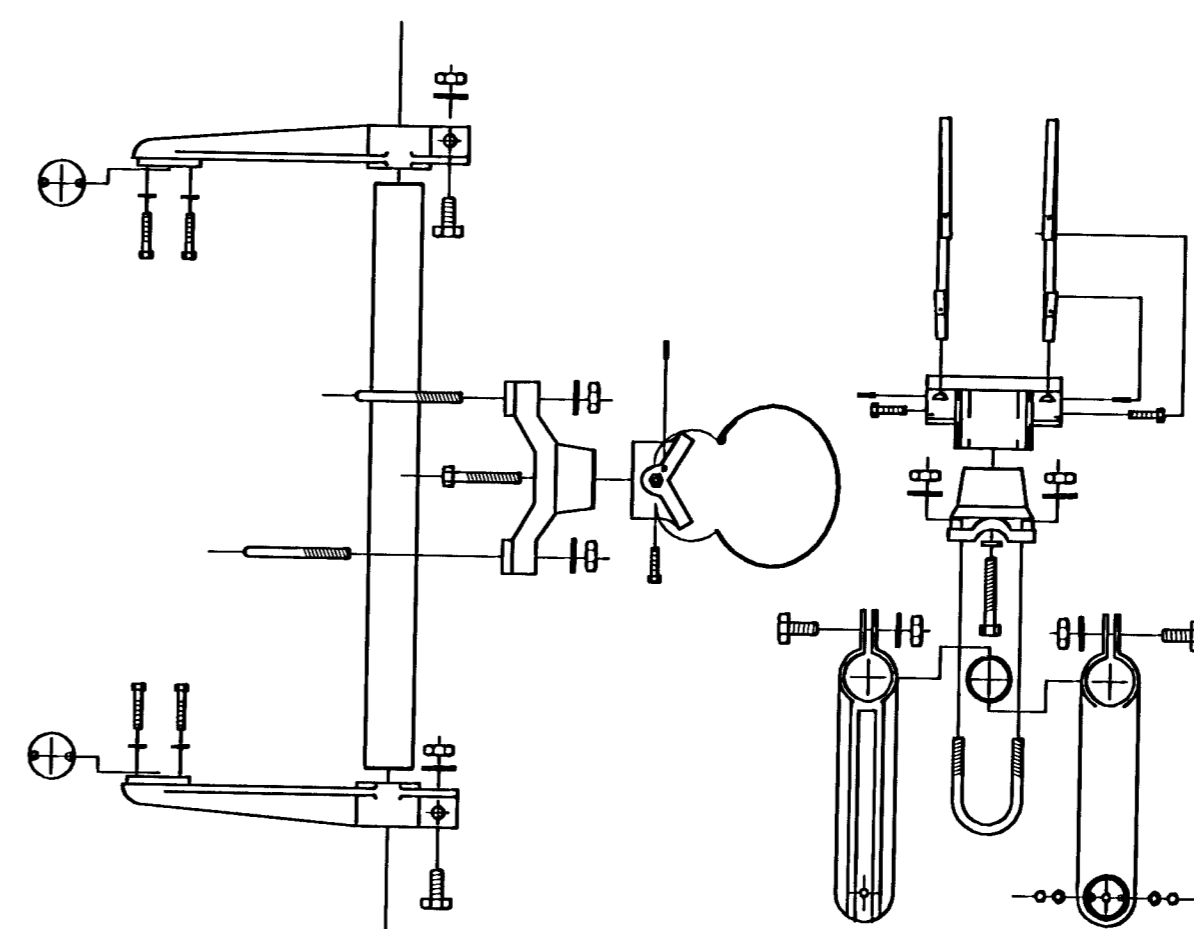


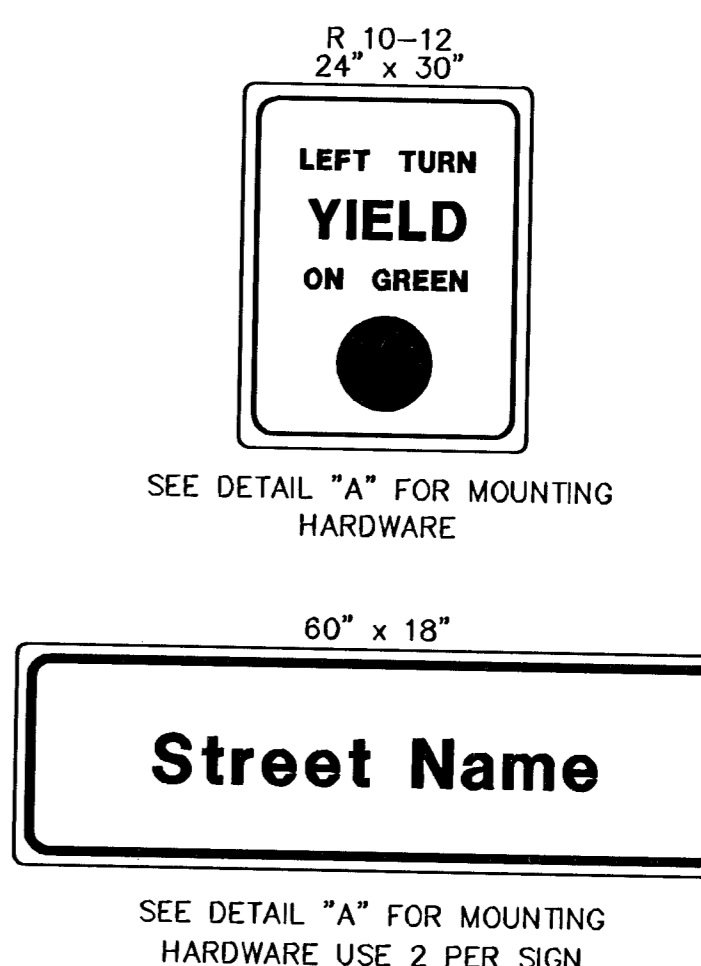
**BANDED SIGN MOUNTING BRACKET DETAIL**



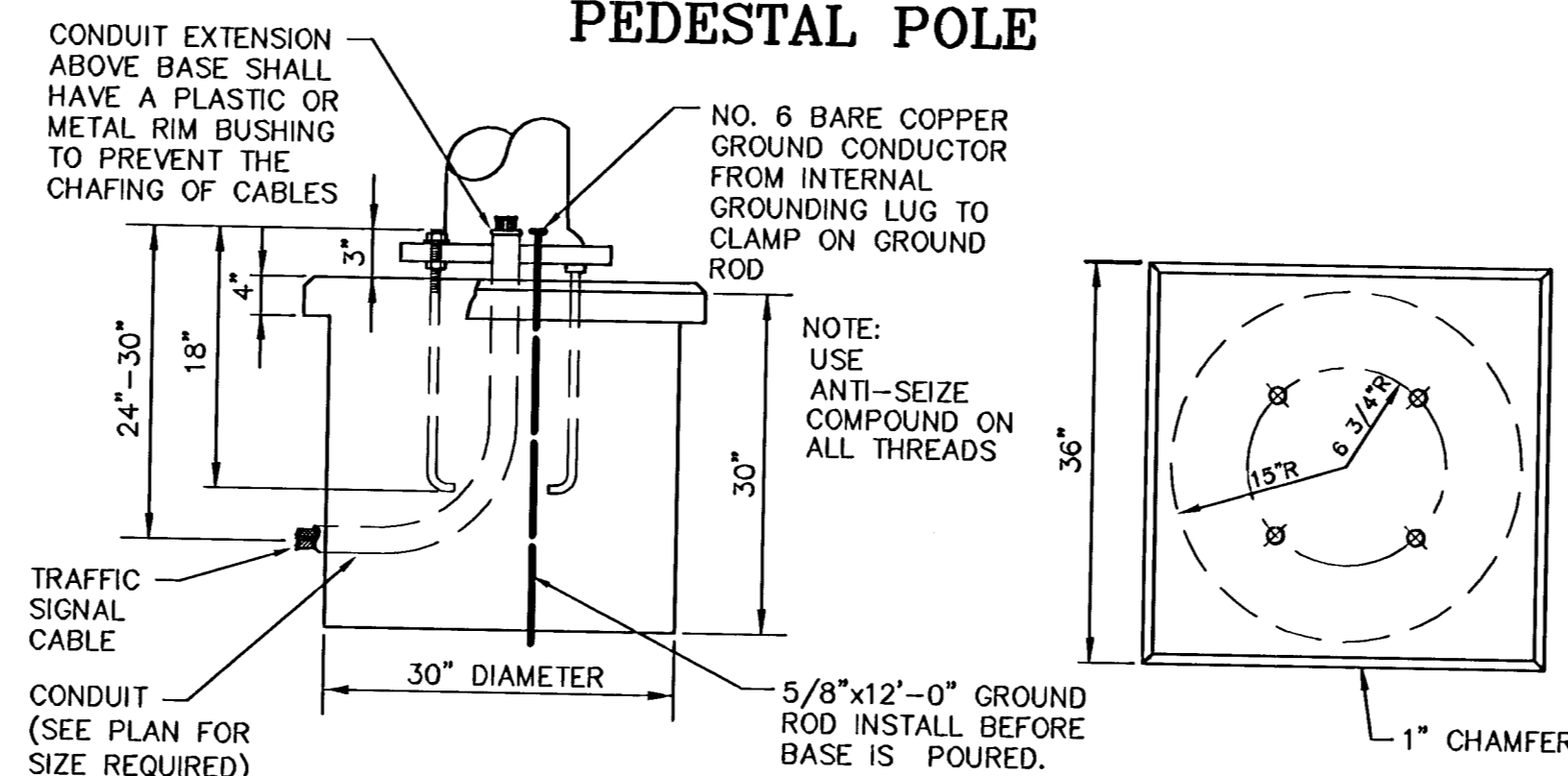
**TYPE I SIGNAL MOUNTING BRACKET ASSEMBLY DETAIL**



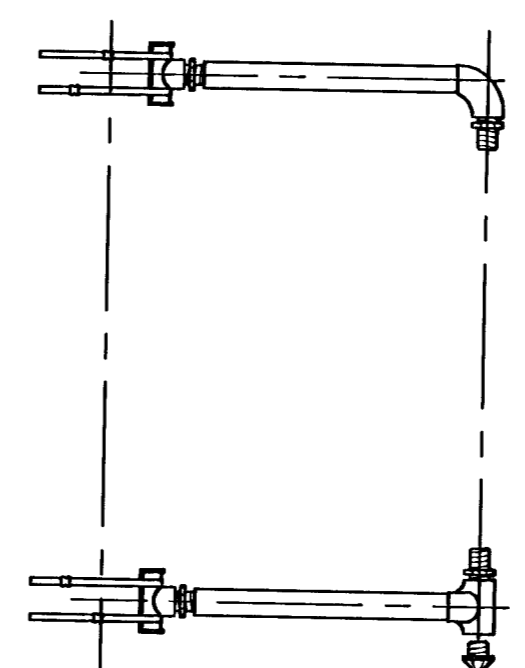
**STANDARD SIGNING**



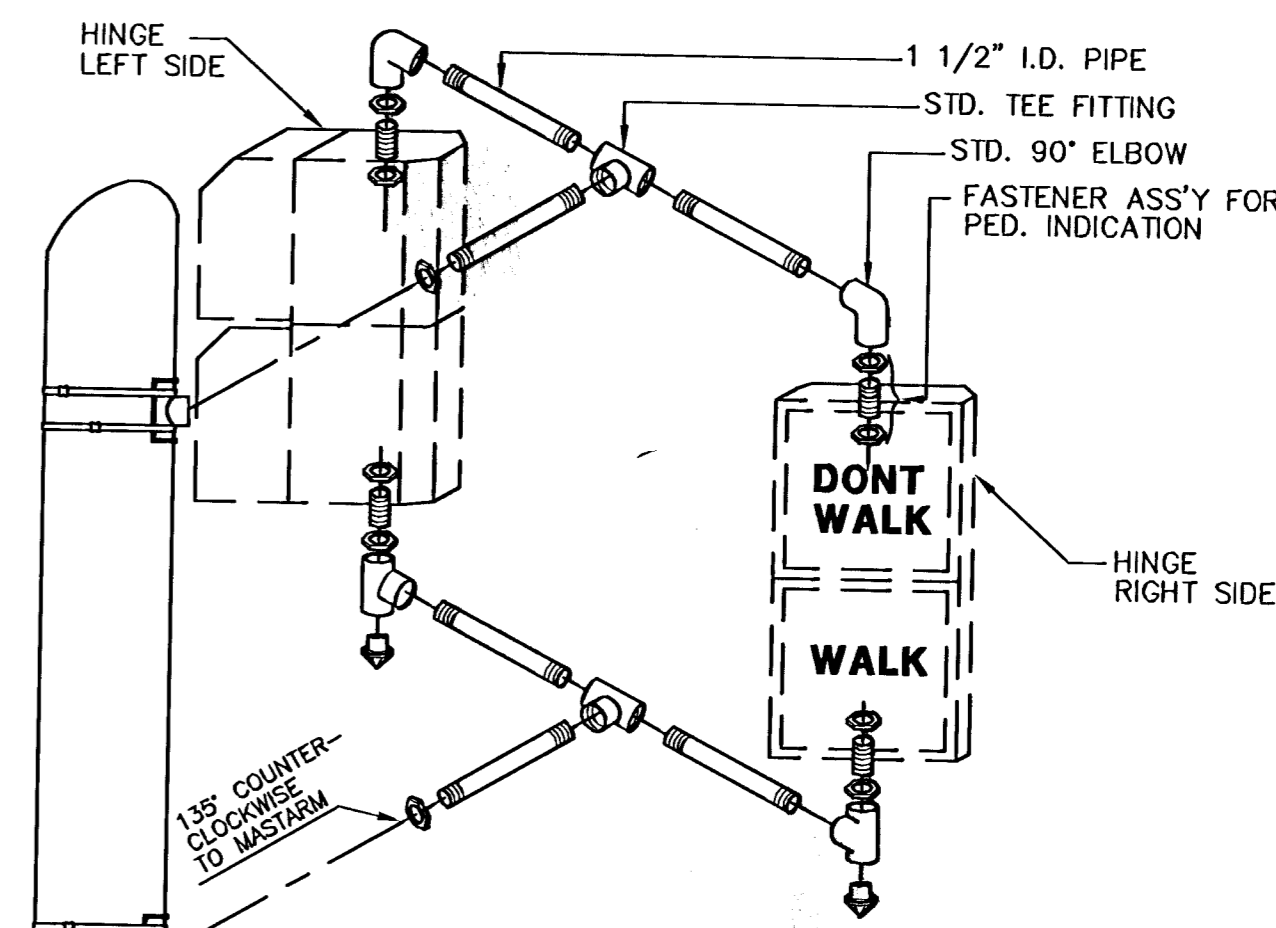
**CONCRETE BASE DETAILS PEDESTAL POLE**



**TYPE III SIDE-OF-POLE MOUNTING BRACKET ASSEMBLY**



**TYPE II SIDE-OF-POLE SIGNAL MOUNTING BRACKET ASSEMBLY**



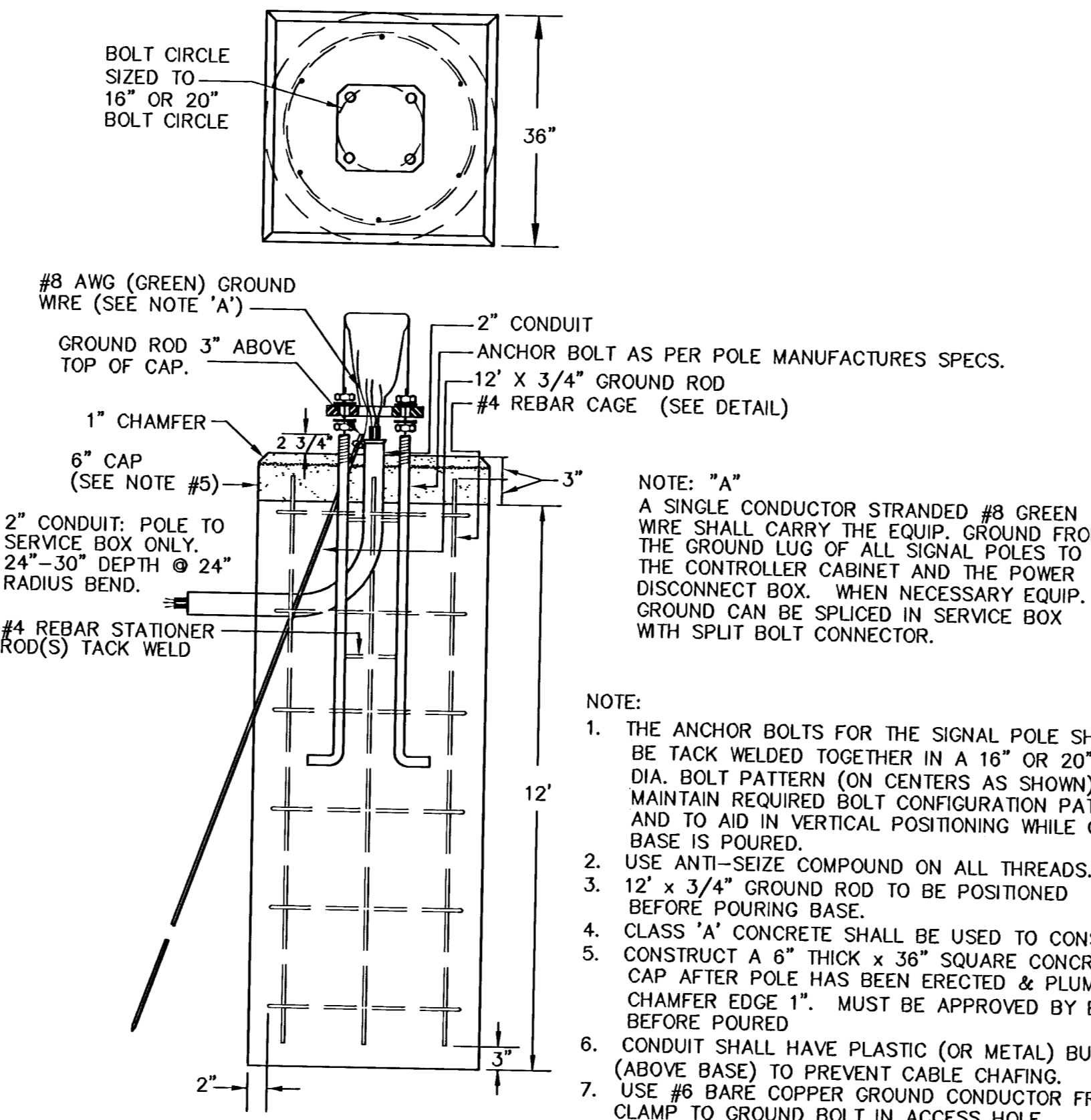
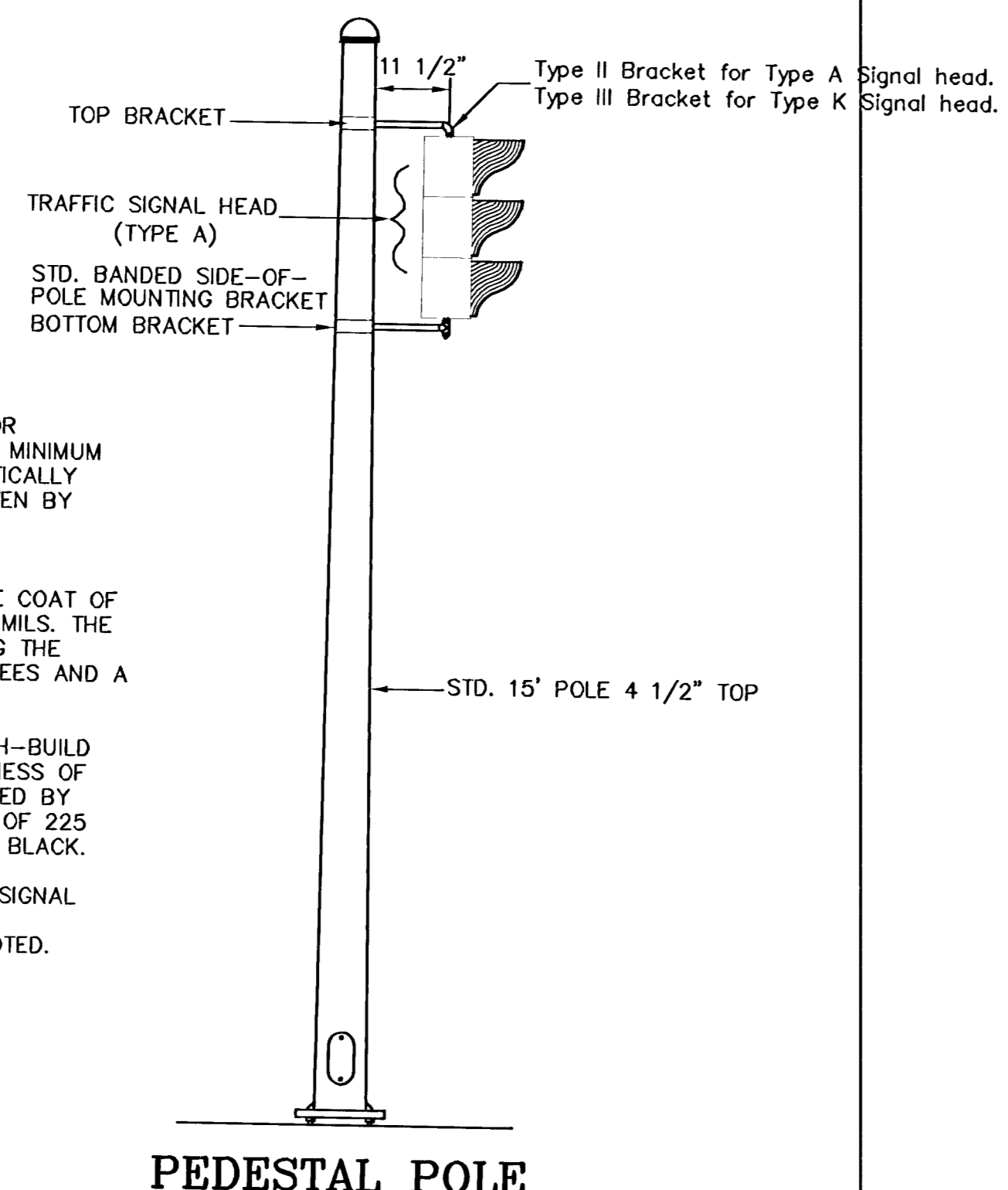
**NOTE:**

SPECIAL FINISH FOR TRAFFIC SIGNAL STRUCTURES: ALL EXTERIOR SURFACES ARE COATED WITH A ZINC RICH EPOXY POWDER TO A MINIMUM DRY FILM THICKNESS OF 2.0 MILS. THE COATING IS ELECTROSTATICALLY APPLIED AND PARTIALLY CURED IN A GAS FIRED CONVECTION OVEN BY HEATING THE STEEL SUBSTRATE TO A MINIMUM OF 250 DEGREES FAHRENHEIT.

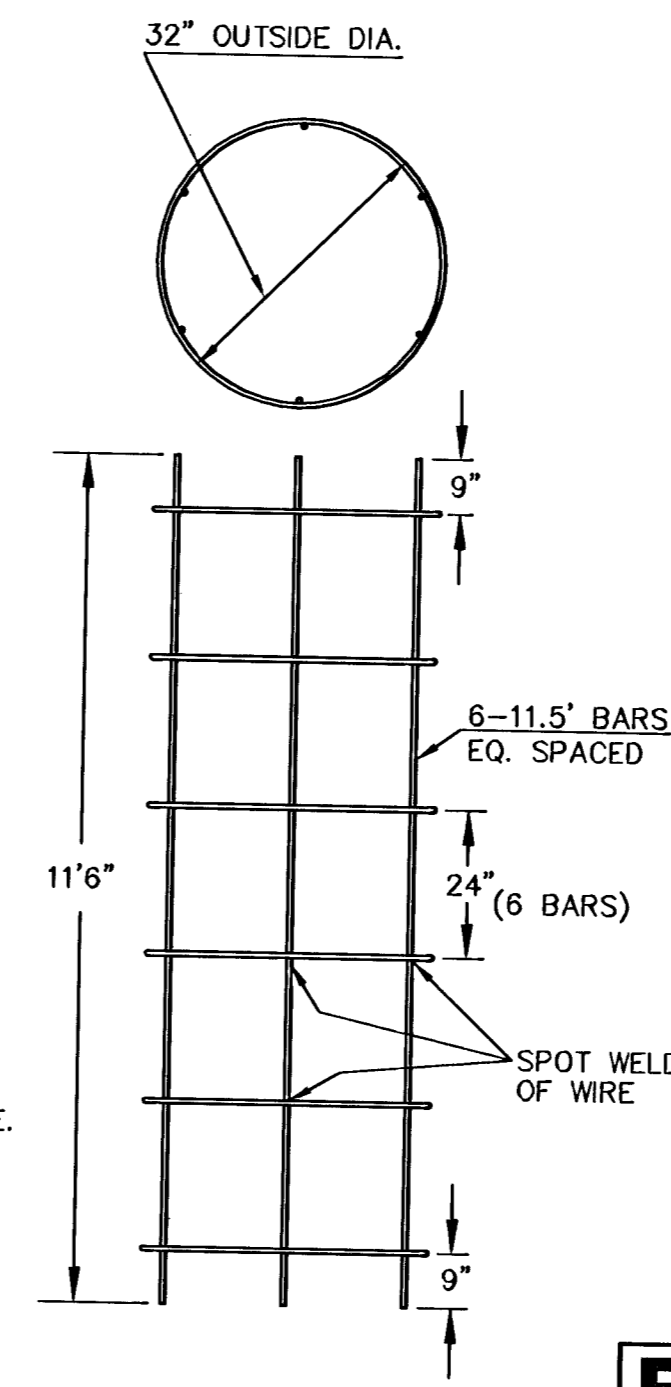
THE POWDER PRIMED SURFACE IS COATED WITH AN INTERMEDIATE COAT OF POLYESTER POWDER TO A MINIMUM DRY FILM THICKNESS OF 2.0 MILS. THE COATING IS ELECTROSTATICALLY APPLIED AND CURED BY HEATING THE SUBSTRATE IN A CONVECTION OVEN TO A MINIMUM OF 350 DEGREES AND A MAXIMUM OF 400 DEGREES FAHRENHEIT.

THE INTERMEDIATE COAT IS TOP COATED WITH ONE COAT OF HIGH-BUILD ACRYLIC POLYURETHANE ENAMEL TO A MINIMUM DRY FILM THICKNESS OF 2.0 MILS. THE COATING IS ELECTROSTATICALLY APPLIED AND CURED BY HEATING THE SUBSTRATE IN A CONVECTION OVEN TO A MINIMUM OF 225 DEGREES FAHRENHEIT. THE FINAL TOP COATING COLOR SHALL BE BLACK.

THE COLOR OF EXTERIOR SURFACE OF ALL STRUCTURES, POLES, SIGNAL HEADS, BRACKETS, EQUIPMENT, CABINETS, COVERS, PANELS AND COMPONENTS SHALL BE MATCHING BLACK, UNLESS OTHERWISE NOTED.



**REBAR CAGE**



1. DIRECTIONAL ALIGNMENT OF PED. INDICATIONS & BRACKET(S) SHALL BE DETERMINED IN THE FIELD BY THE ENGINEER.
2. THROUGH HOLES IN THE POLE SHALL BE DRILLED AND WELL REAMED TO PREVENT CABLE CHAFING.
3. HINGE PEDESTRIAN SIGNAL DOORS AWAY FROM POLE.

G:\CIVIL\01160\DWG\CROSSWALK\jackson\_elem\01160SG4.DWG

PROJECT DESCRIPTION

**STEEL SIGNAL POLE ASSEMBLY DETAILS**

PROJECT NUMBER 872-83991

APPROVED BY

REVISION BY: T.M. DATE: FEB. 96

DATE: MAY, 97

CITY OF WICHITA DEPARTMENT OF PUBLIC WORKS

DIVISION OF TRAFFIC ENGINEERING

WM. G. MCKINLEY P.E. TRAFFIC ENGINEER

SCALE 7/9 NO SCALE SHEET / OF