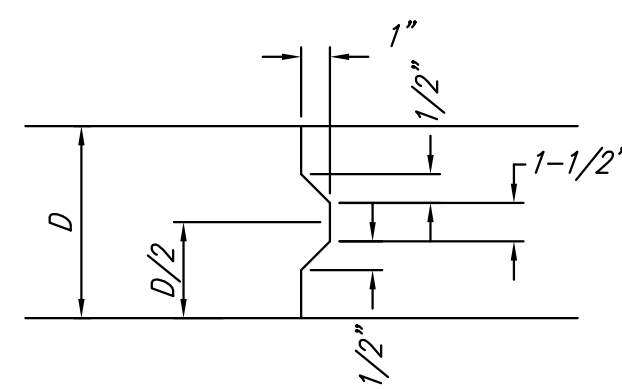
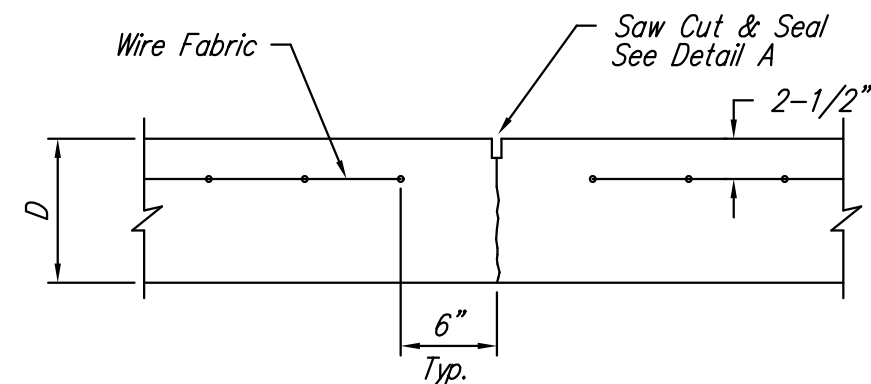


**EXPANSION JOINT**

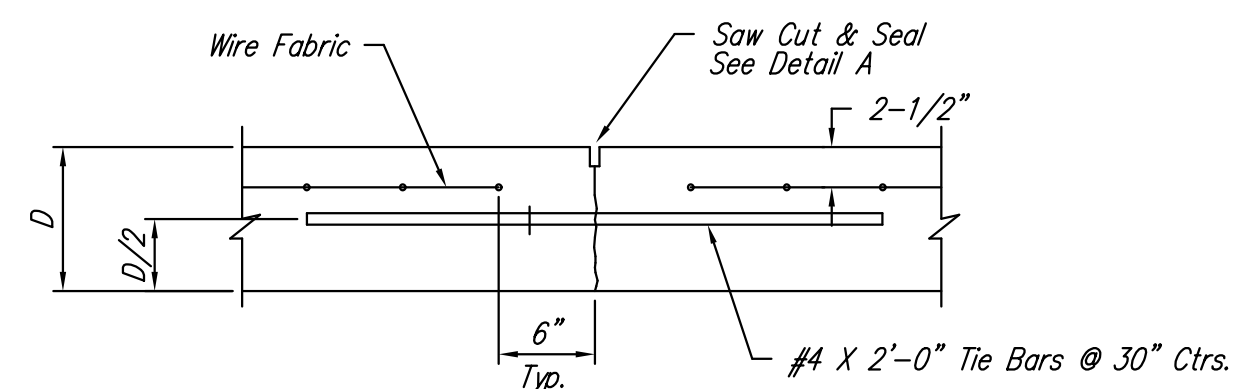
NOTE: Extra Thickness to be Subsidiary to Price of Square Yards Pavement



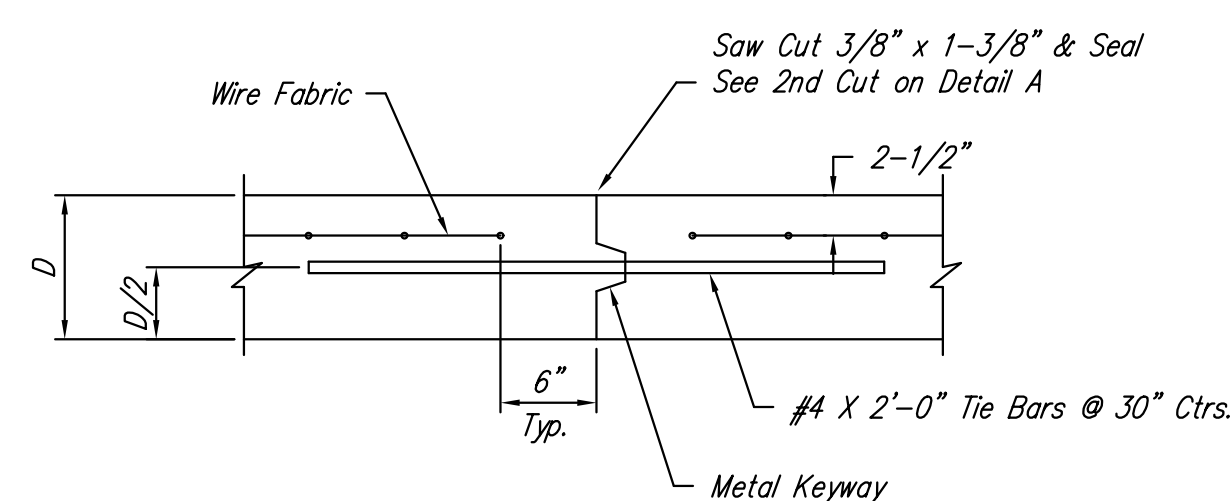
**KEYWAY DETAIL**



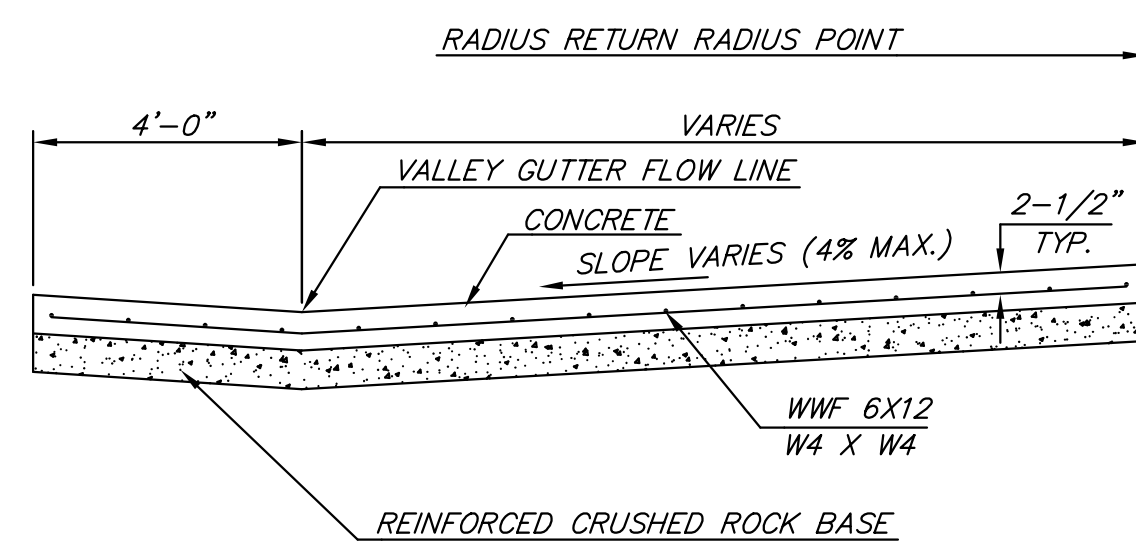
**CONTRACTION JOINT DETAIL (C.J.)**



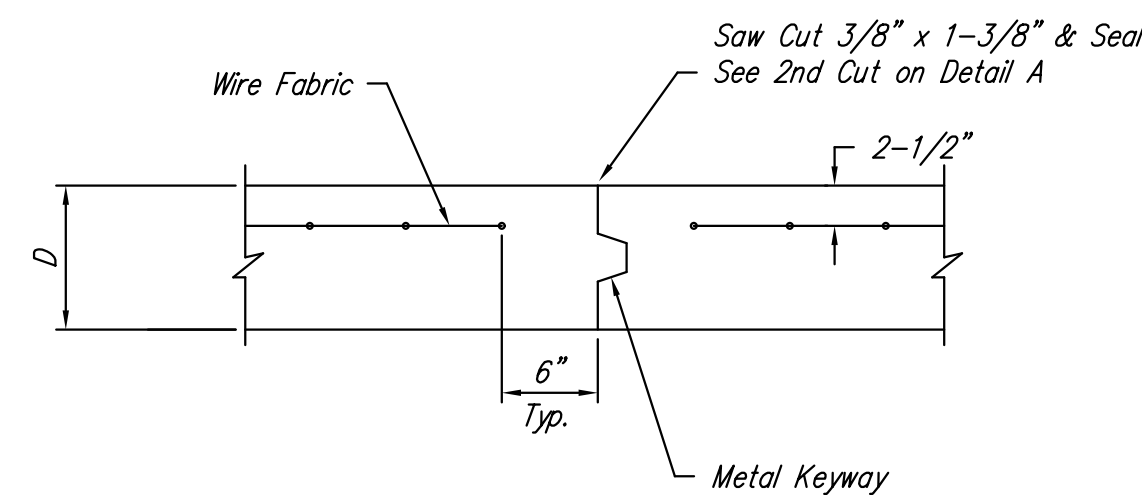
**LONGITUDINAL JOINT DETAIL (L.J.)**



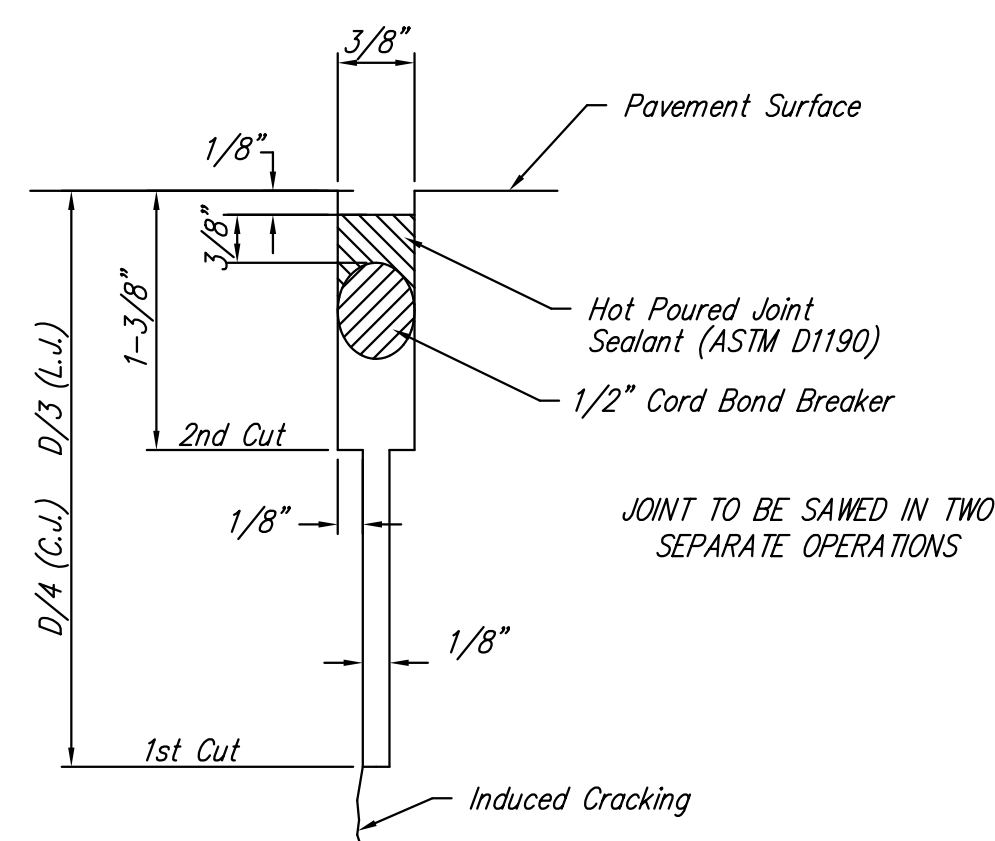
**OPTIONAL LONGITUDINAL JOINT DETAIL (L.J.)**



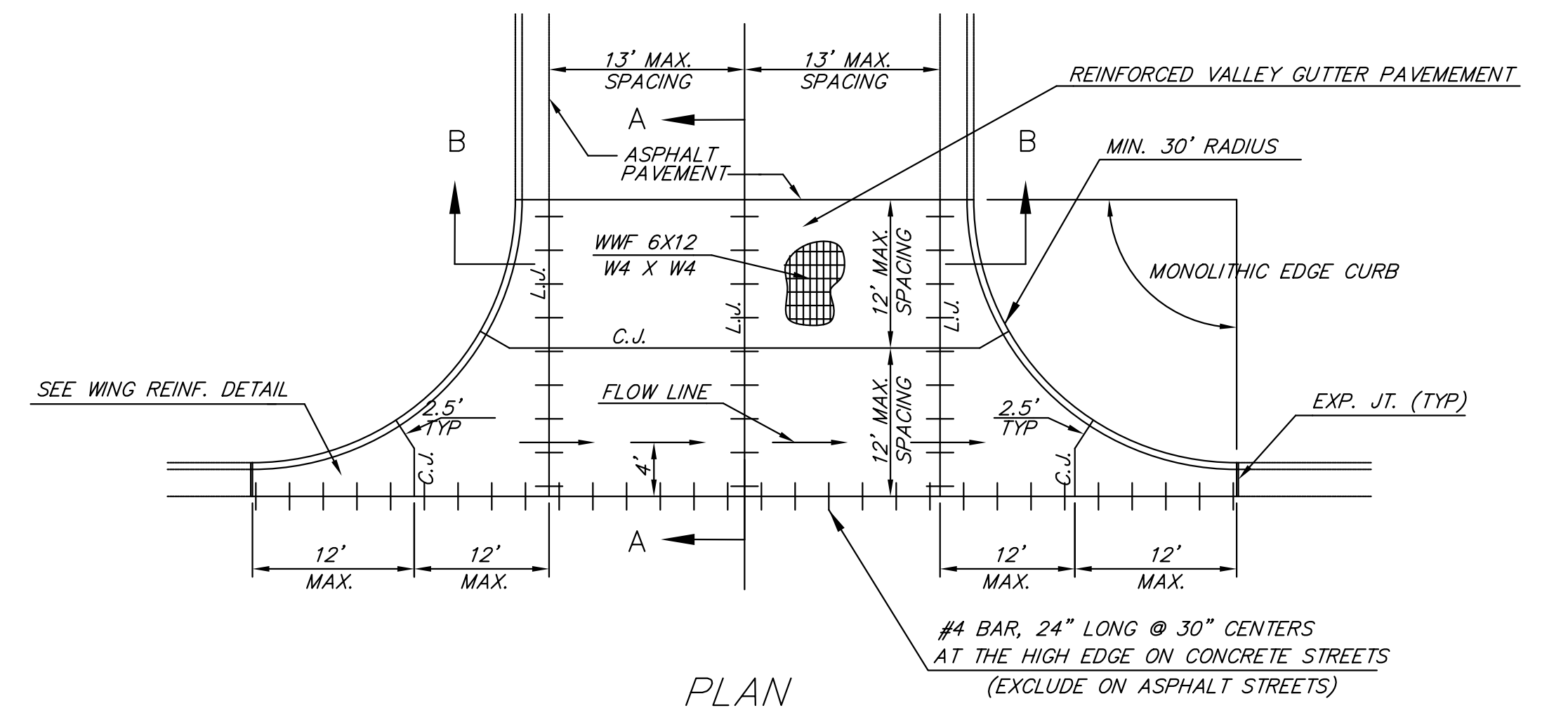
**SECTION A-A**



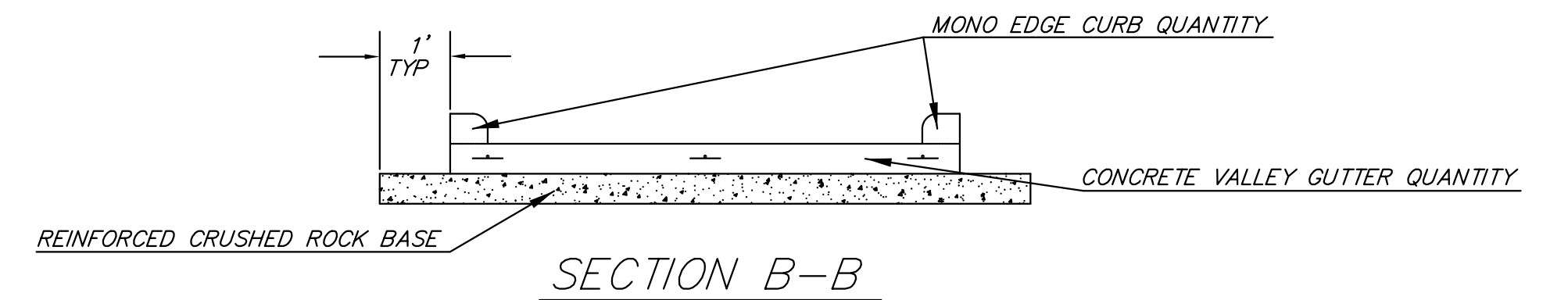
**OPTIONAL CONTRACTION JOINT**



**SAW JOINT DETAIL (DETAIL A)**

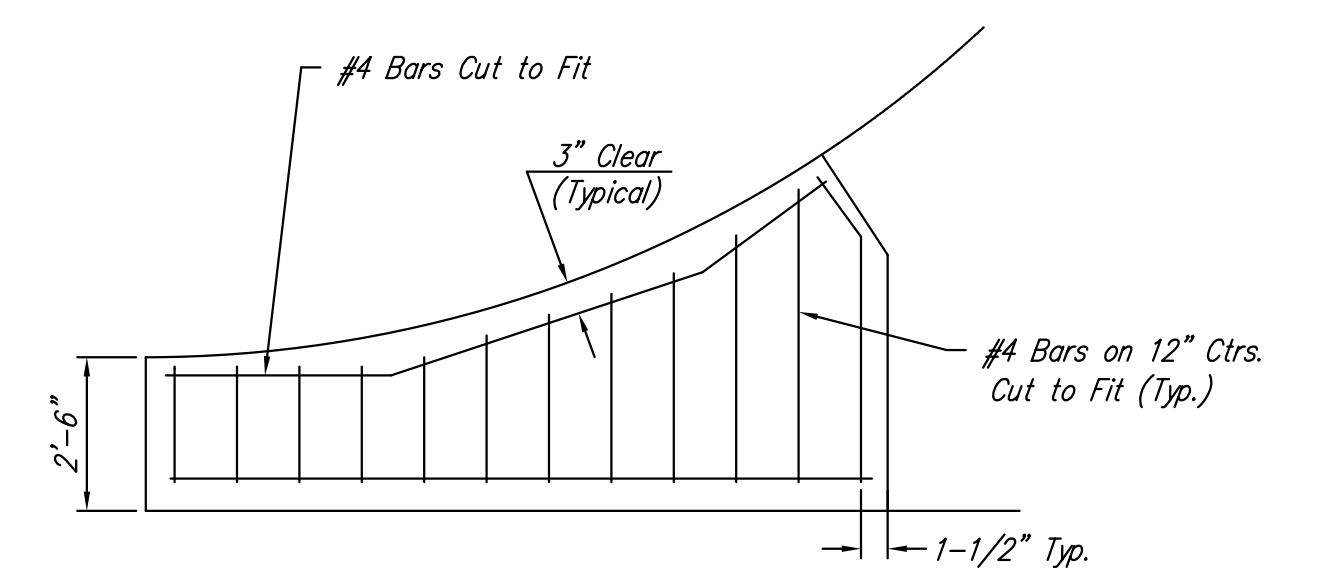


**PLAN**




**SECTION B-B**

**REINFORCED VALLEY GUTTER DETAIL**



**WING REINFORCING DETAIL**

|  |            |   |                     |
|--|------------|---|---------------------|
| REVISION MAY 2017  |            | SECTION B-B, ROCK EXTENDED ONE FOOT BEYOND PAVEMENT |                     |
|   |            |   |                     |
| <b>VALLEY GUTTER DETAILS</b>   |            |   |                     |
| CITY ENGINEER<br><b>GARY JANZEN, P.E.</b>  |            |   |                     |
| PROJECT NUMBER<br>87 N-0720-01   | OCA NUMBER | DATE<br>9/25/2023                                   |                     |
| CITY ENGINEER'S OFFICE<br>CITY HALL - SEVENTH FLOOR<br>455 NORTH MAIN STREET<br>WICHITA, KANSAS 67202-1620<br>(316) 268-4501 |            |   | SHEET<br>128 OF 517 |