








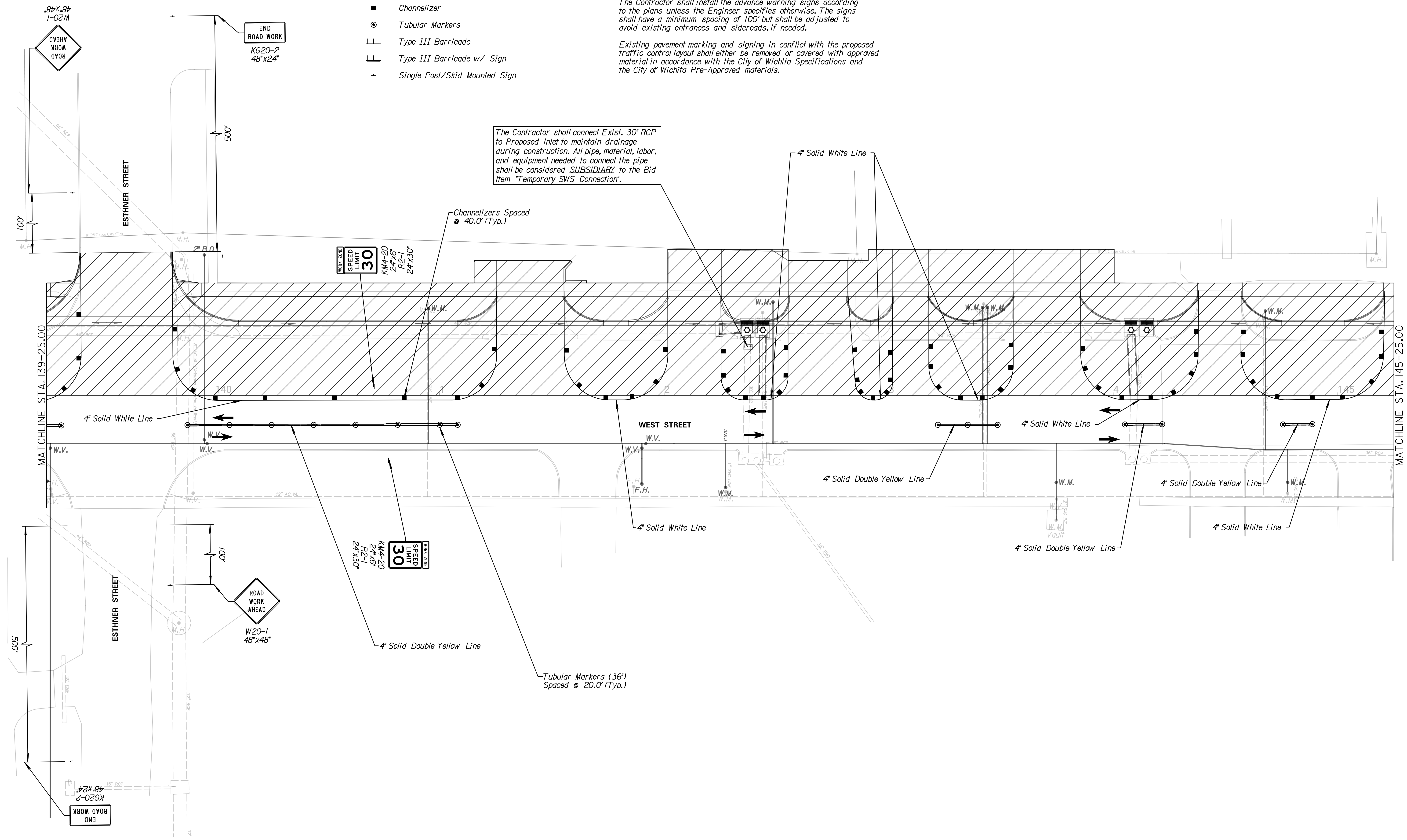
- LEGEND**
-  Work Area
  -  Temporary Asphalt Pavement
  -  Channelizer
  -  Tubular Markers
  -  Type III Barricade
  -  Type III Barricade w/ Sign
  -  Single Post/Skid Mounted Sign

*Note:*  
 \*Type III Barricades and signs are to only be placed during construction through the entrance, sideroad, or through construction in the area. The Contractor shall open up the area after construction is complete to allow full access to traffic.

The Contractor shall install the advance warning signs according to the plans unless the Engineer specifies otherwise. The signs shall have a minimum spacing of 100' but shall be adjusted to avoid existing entrances and sideroads, if needed.

Existing pavement marking and signing in conflict with the proposed traffic control layout shall either be removed or covered with approved material in accordance with the City of Wichita Specifications and the City of Wichita Pre-Approved materials.

The Contractor shall connect Exist. 30" RCP to Proposed Inlet to maintain drainage during construction. All pipe, material, labor, and equipment needed to connect the pipe shall be considered **SUBSIDIARY** to the Bid Item "Temporary SWS Connection".



**TRANSYSTEMS**  
 245 N. WACO  
 SUITE 222  
 WICHITA, KANSAS 67202  
 MAIN: 316-303-3000  
 FAX: 316-462-5629

CONSULTANTS:

WEST STREET IMPROVEMENTS FROM PAWNEE TO HARRY  
 WICHITA, KANSAS  


REVISIONS:	MARK	DATE	DESCRIPTION

PROJ NO: 87 N-0720-01  
 SCALE: 1"=20'  
 DATE: 9/25/2023  
 DESIGNED BY: LCV  
 DRAWN BY: LCV  
 CHECKED BY: MDB

SHEET TITLE:  
**WEST STREET IMPROVEMENTS TRAFFIC CONTROL PHASE 2A**

SHEET NO.  
**170**  
 SHEET 170 OF 517