

CONSULTANTS:

WEST STREET IMPROVEMENTS  
 FROM PAWNEE TO HARRY

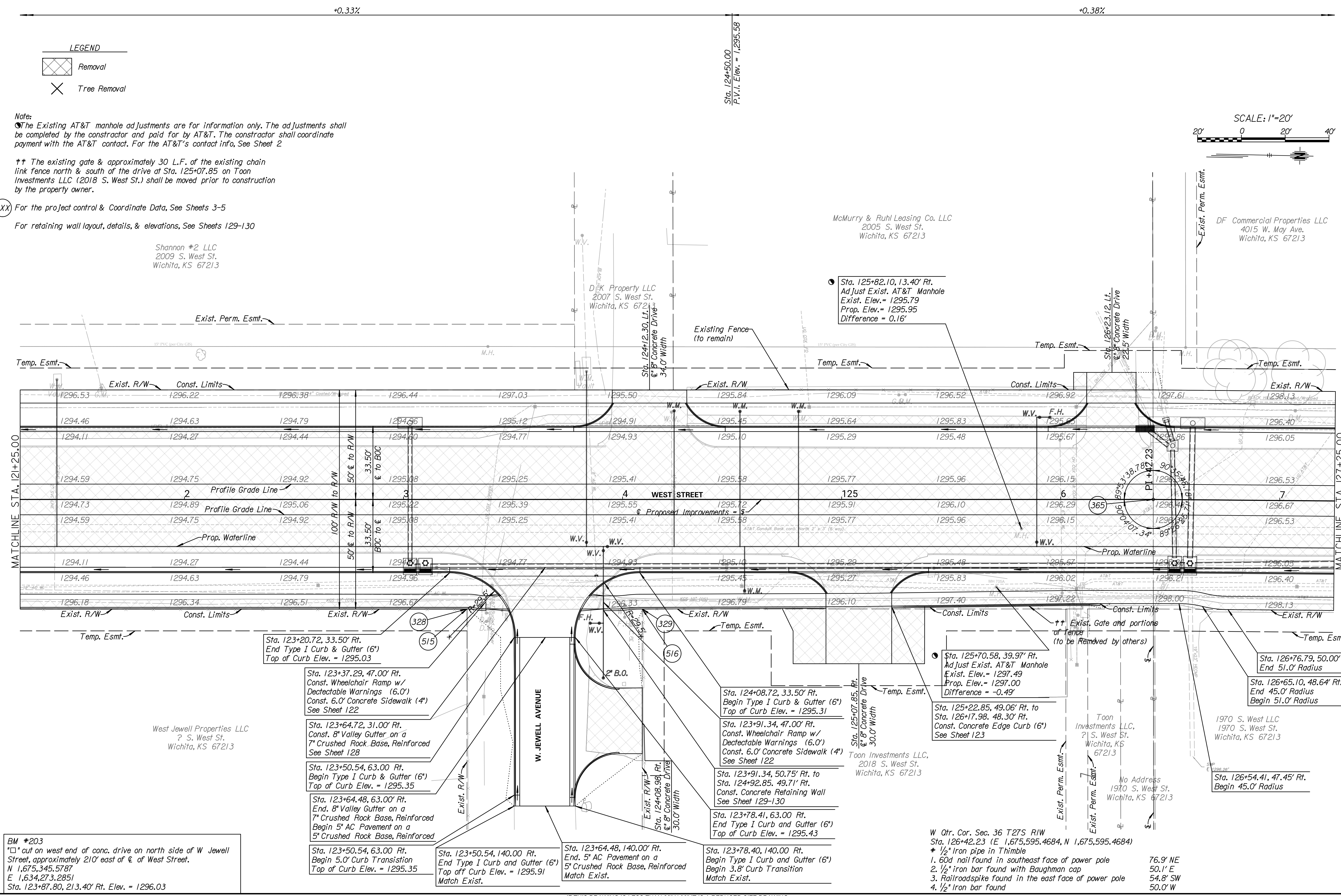


REVISIONS:	DESCRIPTION	MARK	DATE

PROJ NO: 87 N-0720-01  
 SCALE: 1"=20'  
 DATE: 9/25/2023  
 DESIGNED BY: CKC  
 DRAWN BY: CKC  
 CHECKED BY: MDB

SHEET TITLE:  
**WEST STREET  
 PLAN & PROFILE  
 STA. 121+25.00 TO  
 STA. 127+25.00**

SHEET NO.  
**19**  
 SHEET 19 OF 517



**LEGEND**  
 Removal  
 Tree Removal

**Note:**  
 The Existing AT&T manhole adjustments are for information only. The adjustments shall be completed by the contractor and paid for by AT&T. The contractor shall coordinate payment with the AT&T contact. For the AT&T's contact info, See Sheet 2

†† The existing gate & approximately 30 L.F. of the existing chain link fence north & south of the drive at Sta. 125+07.85 on Toon Investments LLC (2018 S. West St.) shall be moved prior to construction by the property owner.

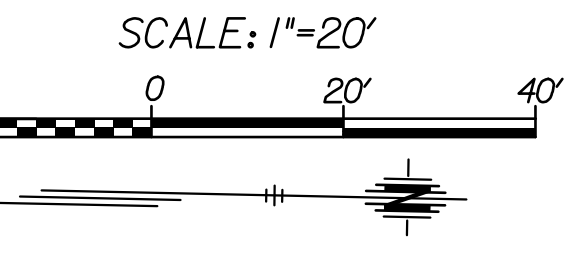
(XXX) For the project control & Coordinate Data, See Sheets 3-5

For retaining wall layout, details, & elevations, See Sheets 129-130

Shannon \*2 LLC  
 2009 S. West St.  
 Wichita, KS 67213

McMurry & Ruhl Leasing Co. LLC  
 2005 S. West St.  
 Wichita, KS 67213

D&K Property LLC  
 2007 S. West St.  
 Wichita, KS 67213



MATCHLINE STA. 121+25.00

MATCHLINE STA. 127+25.00

BM \*203  
 \* cut on west end of conc. drive on north side of W Jewell Street, approximately 210' east of E of West Street.  
 N 1,675,345.5787  
 E 1,634,273.2851  
 Sta. 123+87.80, 213.40' Rt. Elev. = 1296.03

West Jewell Properties LLC  
 ? S. West St.  
 Wichita, KS 67213

Sta. 123+20.72, 33.50' Rt.  
 End Type I Curb & Gutter (6")  
 Top of Curb Elev. = 1295.03

Sta. 123+37.29, 47.00' Rt.  
 Const. Wheelchair Ramp w/  
 Detectable Warnings (6.0')  
 Const. 6.0' Concrete Sidewalk (4")  
 See Sheet 122

Sta. 123+64.72, 31.00' Rt.  
 Const. 8" Valley Gutter on a  
 7" Crushed Rock Base, Reinforced  
 See Sheet 128

Sta. 123+50.54, 63.00 Rt.  
 Begin Type I Curb & Gutter (6")  
 Top of Curb Elev. = 1295.35

Sta. 123+64.48, 63.00' Rt.  
 End. 8" Valley Gutter on a  
 7" Crushed Rock Base, Reinforced  
 Begin 5" AC Pavement on a  
 5" Crushed Rock Base, Reinforced

Sta. 123+50.54, 63.00 Rt.  
 Begin 5.0' Curb Transition  
 Top of Curb Elev. = 1295.35

Sta. 123+50.54, 140.00 Rt.  
 End Type I Curb and Gutter (6")  
 Top of Curb Elev. = 1295.91  
 Match Exist.

Sta. 123+64.48, 140.00' Rt.  
 End. 5" AC Pavement on a  
 5" Crushed Rock Base, Reinforced  
 Match Exist.

Sta. 123+78.40, 140.00 Rt.  
 Begin Type I Curb and Gutter (6")  
 Begin 3.8' Curb Transition  
 Match Exist.

Sta. 124+08.72, 33.50' Rt.  
 Begin Type I Curb & Gutter (6")  
 Top of Curb Elev. = 1295.31

Sta. 123+91.34, 47.00' Rt.  
 Const. Wheelchair Ramp w/  
 Detectable Warnings (6.0')  
 Const. 6.0' Concrete Sidewalk (4")  
 See Sheet 122

Sta. 123+91.34, 50.75' Rt. to  
 Sta. 124+92.85, 49.71' Rt.  
 Const. Concrete Retaining Wall  
 See Sheet 129-130

Sta. 123+78.41, 63.00 Rt.  
 End Type I Curb and Gutter (6")  
 Top of Curb Elev. = 1295.43

Toon Investments LLC,  
 2018 S. West St.  
 Wichita, KS 67213

Sta. 125+07.85, Rt.  
 8" Concrete Drive  
 30.0' Width

Sta. 125+70.58, 39.97' Rt.  
 Adjust Exist. AT&T Manhole  
 Exist. Elev. = 1297.49  
 Prop. Elev. = 1297.00  
 Difference = -0.49'

Sta. 125+22.85, 49.06' Rt. to  
 Sta. 126+17.98, 48.30' Rt.  
 Const. Concrete Edge Curb (6")  
 See Sheet 123

Toon Investments LLC,  
 ? S. West St.  
 Wichita, KS 67213

No Address  
 1970 S. West St.  
 Wichita, KS 67213

Sta. 126+76.79, 50.00' Rt.  
 End 51.0' Radius

Sta. 126+65.10, 48.64' Rt.  
 End 45.0' Radius  
 Begin 51.0' Radius

Sta. 126+54.41, 47.45' Rt.  
 Begin 45.0' Radius

- W Qtr. Cor. Sec. 36 T27S R1W  
 Sta. 126+42.23 (E 1,675,595.4684, N 1,675,595.4684)  
 \* 1/2" iron pipe in Thimble  
 1. 60d nail found in southeast face of power pole 76.9' NE  
 2. 1/2" iron bar found with Baughman cap 50.1' E  
 3. Railroadspike found in the east face of power pole 54.8' SW  
 4. 1/2" iron bar found 50.0' W