

CONSULTANTS:

WEST STREET IMPROVEMENTS
 FROM PAWNEE TO HARRY



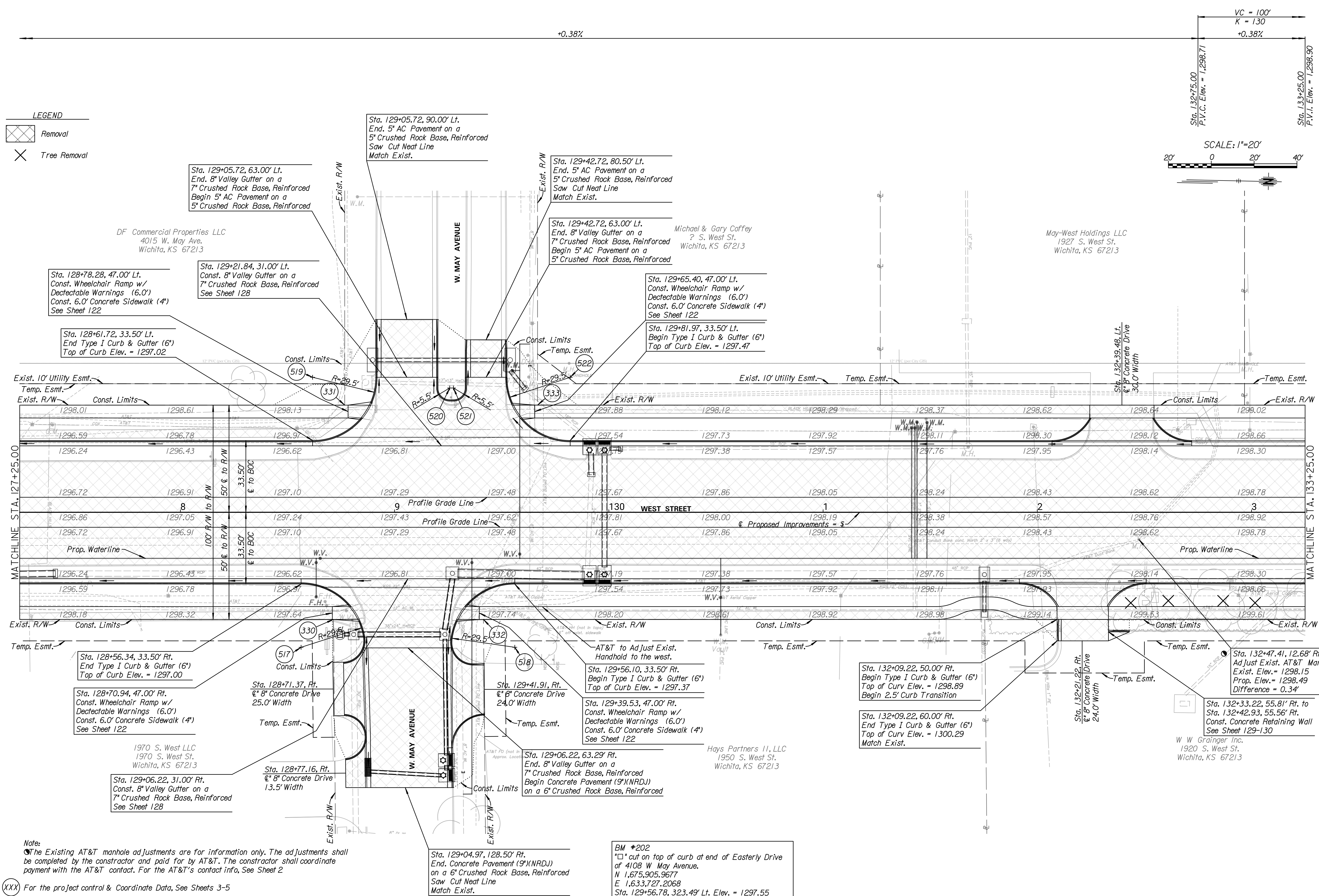
REVISIONS:	DESCRIPTION	DATE	MARK

PROJ NO: 87 N-0720-01
SCALE: 1"=20'
DATE: 9/25/2023
DESIGNED BY: CKC
DRAWN BY: CKC
CHECKED BY: MDB
SHEET TITLE:
WEST STREET PLAN & PROFILE STA. 127+25.00 TO STA. 133+25.00
SHEET NO.
20
SHEET 20 OF 517

LEGEND

Removal

Tree Removal



Note:
 The Existing AT&T manhole adjustments are for information only. The adjustments shall be completed by the contractor and paid for by AT&T. The contractor shall coordinate payment with the AT&T contact. For the AT&T's contact info, See Sheet 2

XXX For the project control & Coordinate Data, See Sheets 3-5

BM #202
 "X" cut on top of curb at end of Easterly Drive of 4108 W May Avenue.
 N 1,675,905.9677
 E 1,633,727.2068
 Sta. 129+56.78, 323.49' Lt. Elev. = 1297.55