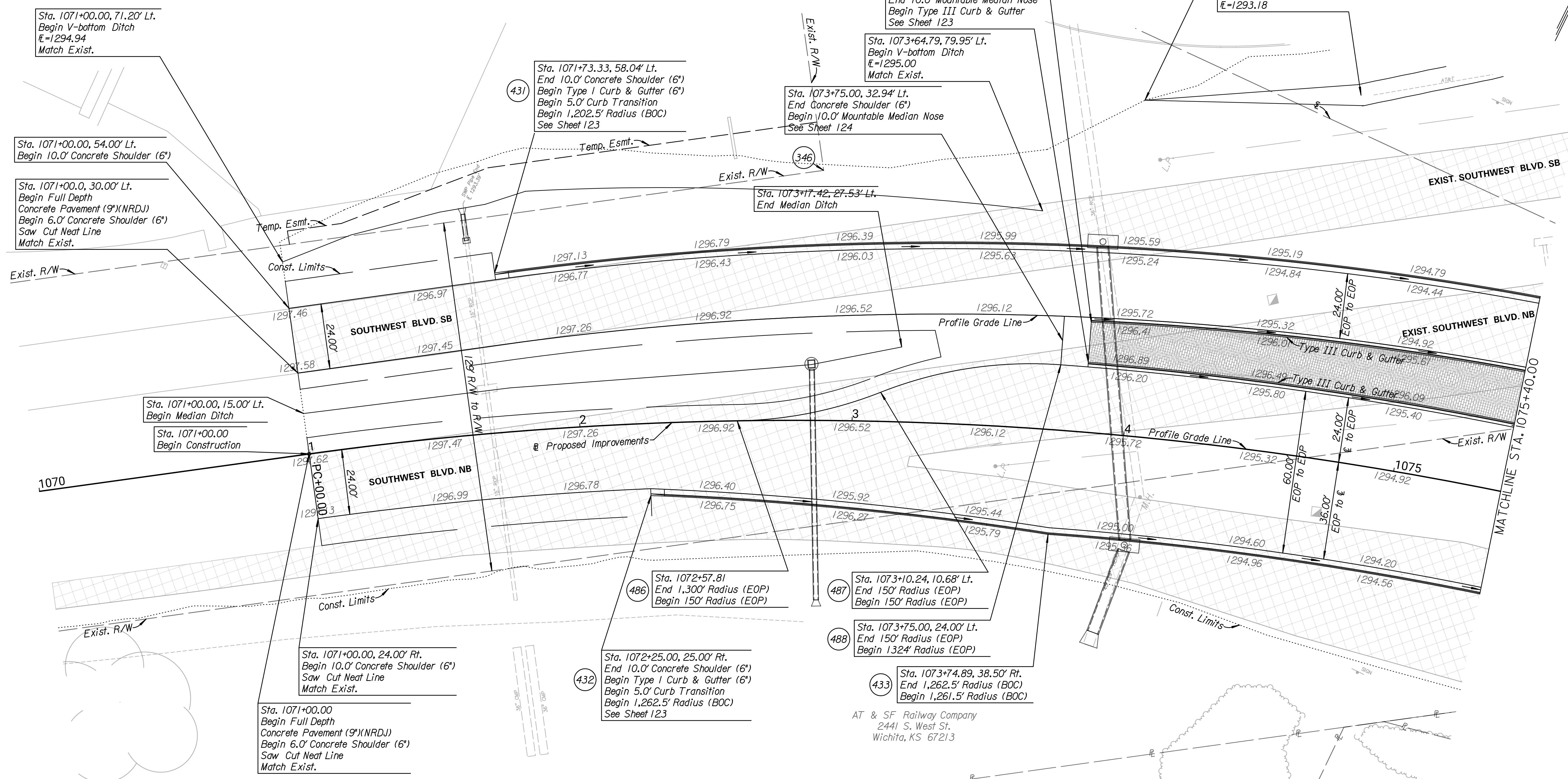
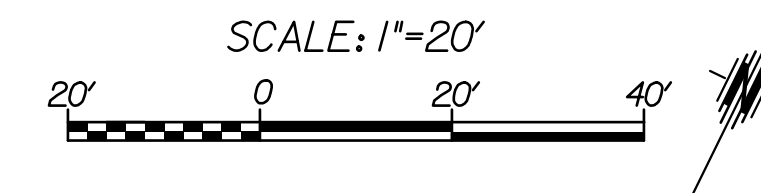
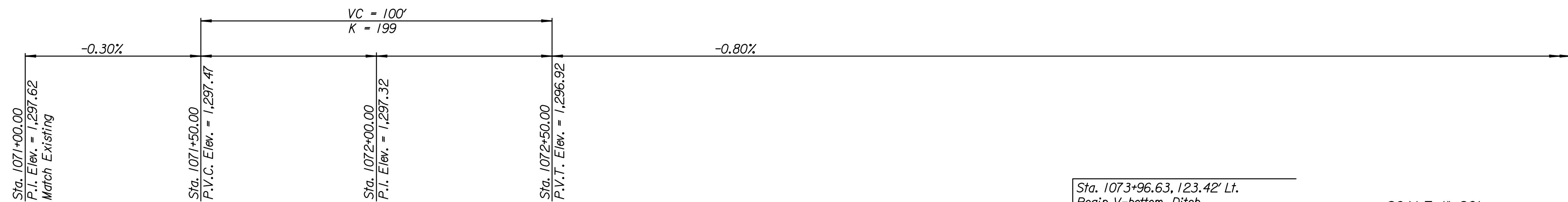


LEGEND



Removal

Note:  
XXX For the project control & Coordinate Data, See Sheets 3-5



Sta. 1071+00.00, 71.20' Lt.  
Begin V-bottom Ditch  
E=1294.94  
Match Exist.

Sta. 1071+00.00, 54.00' Lt.  
Begin 10.0' Concrete Shoulder (6")

Sta. 1071+00.0, 30.00' Lt.  
Begin Full Depth  
Concrete Pavement (9")(NRDJ)  
Begin 6.0' Concrete Shoulder (6")  
Saw Cut Neat Line  
Match Exist.

Sta. 1071+00.00, 15.00' Lt.  
Begin Median Ditch

Sta. 1071+00.00  
Begin Construction

Sta. 1071+00.00, 24.00' Rt.  
Begin 10.0' Concrete Shoulder (6")  
Saw Cut Neat Line  
Match Exist.

Sta. 1071+00.00  
Begin Full Depth  
Concrete Pavement (9")(NRDJ)  
Begin 6.0' Concrete Shoulder (6")  
Saw Cut Neat Line  
Match Exist.

Sta. 1071+73.33, 58.04' Lt.  
End 10.0' Concrete Shoulder (6")  
Begin Type I Curb & Gutter (6")  
Begin 5.0' Curb Transition  
Begin 1,202.5' Radius (BOC)  
See Sheet 123

Sta. 1073+75.00, 32.94' Lt.  
End Concrete Shoulder (6")  
Begin 10.0' Mountable Median Nose  
See Sheet 124

Sta. 1073+17.42, 27.53' Lt.  
End Median Ditch

Sta. 1073+84.81, 25.75' Lt.  
End 10.0' Mountable Median Nose  
Begin Type III Curb & Gutter  
See Sheet 123

Sta. 1073+64.79, 79.95' Lt.  
Begin V-bottom Ditch  
E=1295.00  
Match Exist.

Sta. 1073+84.70, 40.49' Lt.  
End 10.0' Mountable Median Nose  
Begin Type III Curb & Gutter  
See Sheet 123

Sta. 1073+96.63, 123.42' Lt.  
Begin V-bottom Ditch  
Begin Taperto 4.0' Flat Bottom Ditch  
E=1295.45  
Match Exist.

Sta. 1074+68.13, 134.60' Lt.  
Begin 4.0' Flat Bottom Ditch  
E=1293.18

Sta. 1072+57.81  
End 1,300' Radius (EOP)  
Begin 150' Radius (EOP)

Sta. 1073+10.24, 10.68' Lt.  
End 150' Radius (EOP)  
Begin 150' Radius (EOP)

Sta. 1073+75.00, 24.00' Lt.  
End 150' Radius (EOP)  
Begin 1324' Radius (EOP)

Sta. 1073+74.89, 38.50' Rt.  
End 1,262.5' Radius (BOC)  
Begin 1,261.5' Radius (BOC)

AT & SF Railway Company  
2441 S. West St.  
Wichita, KS 67213

BM \*206  
\*□ cut on north end of return of east edge of  
driveway for 4220 W Pawnee Avenue.  
N 1,672,963.1409  
E 1,633,322.5440  
Sta. 1071+28.73, 329.02' Lt. Elev. = 1295.47

**TRANSYSTEMS**  
245 N. WACO  
SUITE 222  
WICHITA, KANSAS 67202  
MAIN: 316-303-3000  
FAX: 316-462-5629

CONSULTANTS:

WEST STREET IMPROVEMENTS  
FROM PAWNEE TO HARRY

WICHITA, KANSAS  
**CITY OF WICHITA**

REVISIONS:	MARK	DATE	DESCRIPTION

PROJ NO: 87 N-0720-01  
SCALE: 1"=20'  
DATE: 9/25/2023  
DESIGNED BY: CKC  
DRAWN BY: CKC  
CHECKED BY: MDB

SHEET TITLE:  
**PAWNEE ST.  
PLAN & PROFILE  
STA. 1071+00.00 TO  
STA. 1075+40.00**

SHEET NO.  
**24**  
SHEET 24 OF 517