

CONSULTANTS:

WEST STREET IMPROVEMENTS  
 FROM PAWNEE TO HARRY

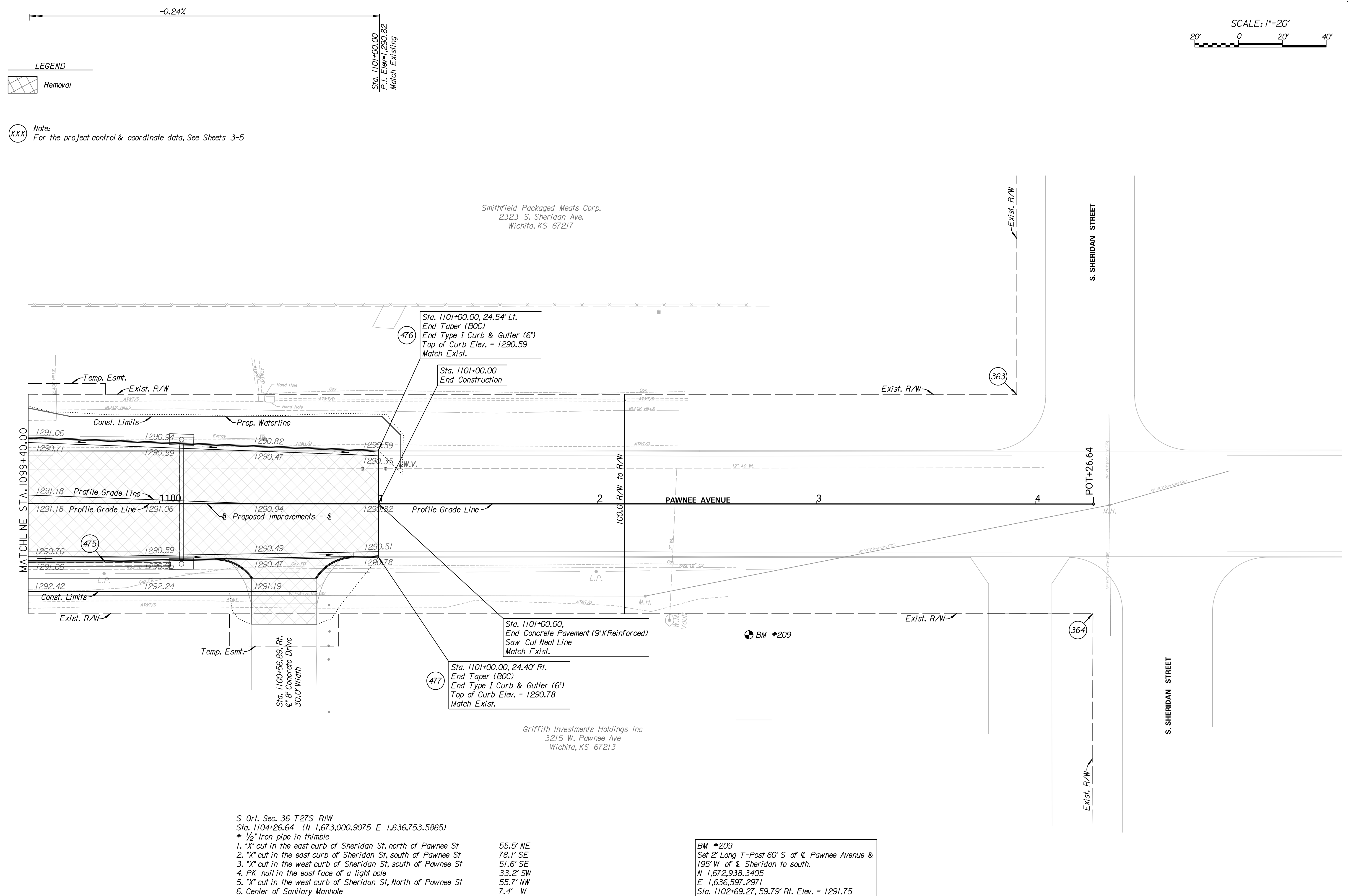
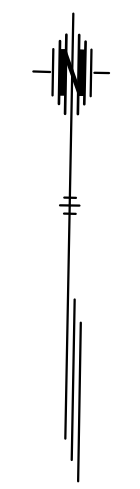
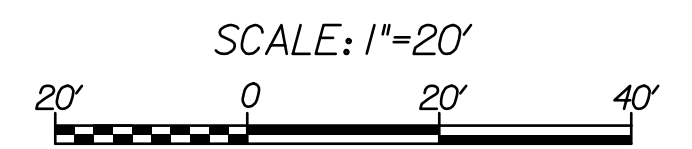


REVISIONS:	MARK	DATE	DESCRIPTION

PROJ NO: 87 N-0720-01  
 SCALE: 1"=20'  
 DATE: 9/25/2023  
 DESIGNED BY: CKC  
 DRAWN BY: CKC  
 CHECKED BY: MDB

SHEET TITLE:  
**PAWNEE ST.  
 PLAN & PROFILE  
 STA. 1099+40.00 TO  
 STA. 1101+00.00**

SHEET NO.  
**29**  
 SHEET 29 OF 517



**LEGEND**  
 Removal

**Note:**  
 (XXX) For the project control & coordinate data, See Sheets 3-5

S Art. Sec. 36 T27S R1W  
 Sta. 1104+26.64 (N 1,673,000.9075 E 1,636,753.5865)  
 \* 1/2" Iron pipe in thimble

- \*X cut in the east curb of Sheridan St, north of Pawnee St
- \*X cut in the east curb of Sheridan St, south of Pawnee St
- \*X cut in the west curb of Sheridan St, south of Pawnee St
- PK nail in the east face of a light pole
- \*X cut in the west curb of Sheridan St, North of Pawnee St
- Center of Sanitary Manhole

- 55.5' NE
- 78.1' SE
- 51.6' SE
- 33.2' SW
- 55.7' NW
- 7.4' W

**BM #209**  
 Set 2' Long T-Post 60' S of E Pawnee Avenue & 195' W of E Sheridan to south.  
 N 1,672,938.3405  
 E 1,636,597.2971  
 Sta. 1102+69.27, 59.79' Rt. Elev. = 1291.75