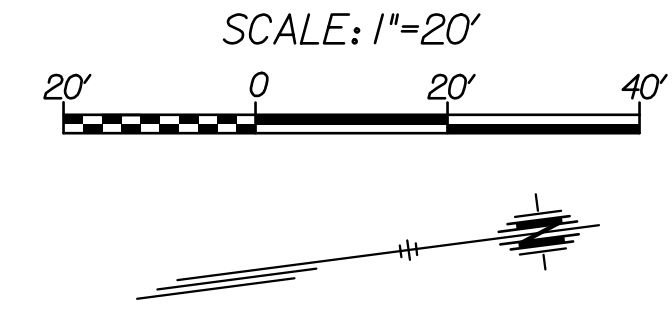
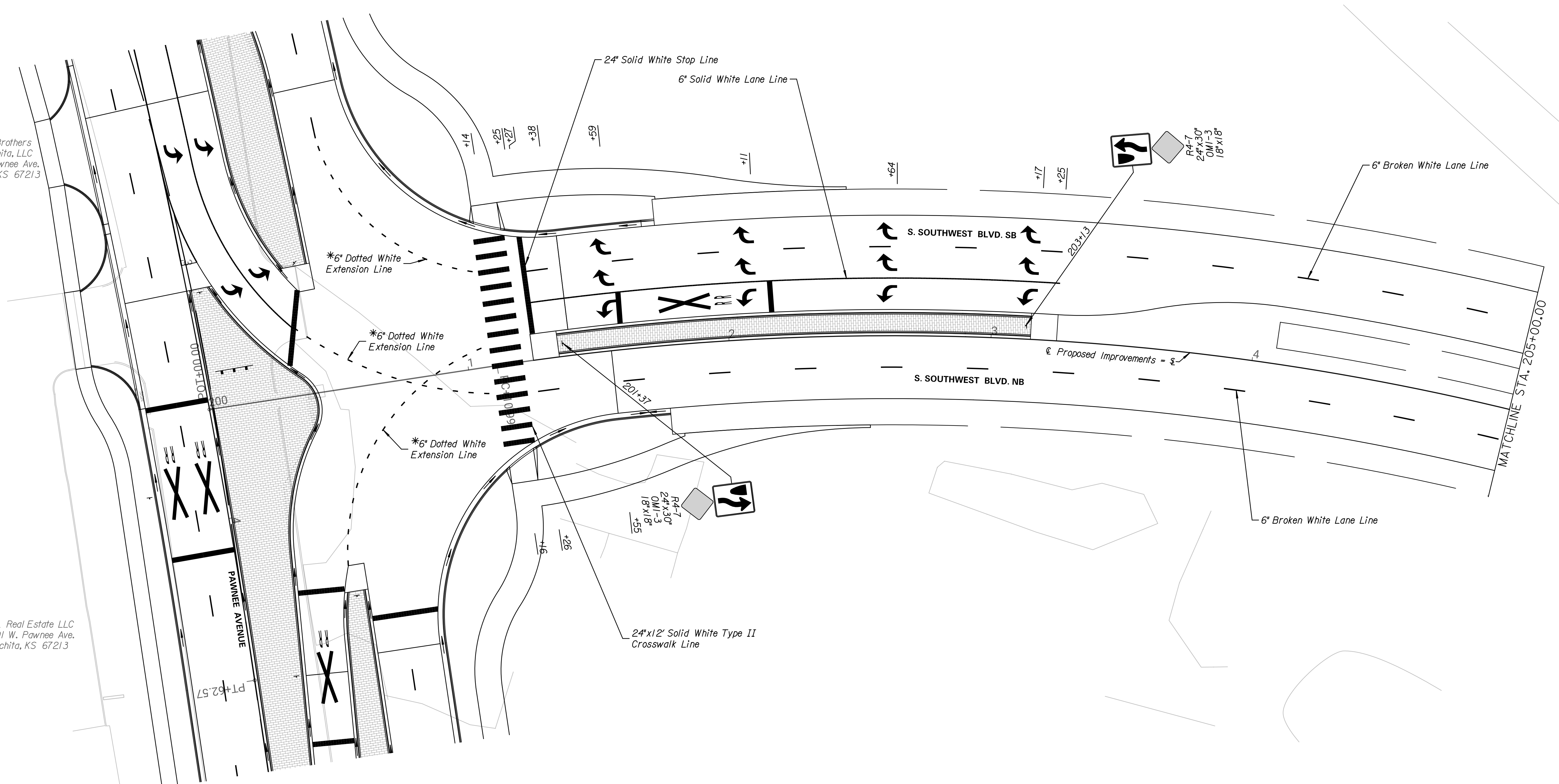


Note:
 *Pavement markings on NB Southwest Blvd. from Sta. 200+00.00 to Sta. 201+54.97 shall be recessed into the pavement. Pavement markings on SB Southwest Blvd. from Sta. 200+00.00 to Sta. 204+08.54 shall be recessed into the pavement.



Long Brothers of Wichita, LLC
 7 W. Pawnee Ave.
 Wichita, KS 67213

BCL Real Estate LLC
 3801 W. Pawnee Ave.
 Wichita, KS 67213



TRANSYSTEMS
 245 N. WACO
 SUITE 222
 WICHITA, KANSAS 67202
 MAIN: 316-303-3000
 FAX: 316-462-5629

CONSULTANTS:

WEST STREET IMPROVEMENTS
 FROM PAWNEE TO HARRY



REVISIONS:	MARK	DATE	DESCRIPTION

PROJ NO: 87 N-0720-01
 SCALE: 1"=20'
 DATE: 9/25/2023
 DESIGNED BY: DAN
 DRAWN BY: DAN
 CHECKED BY: MDB

SHEET TITLE:
 SOUTHWEST BLVD.
 PAVEMENT MARKING
 & SIGNING PLAN
 STA. 200+00.00 TO
 STA. 205+00.00

SHEET NO.
 291

SHEET 291 OF 517

9/25/2023 8:42:11 PM - c:\transystems\new_boralltransystems\paw\la-e_boralls\0984549\C\PMK-103-101.DGN