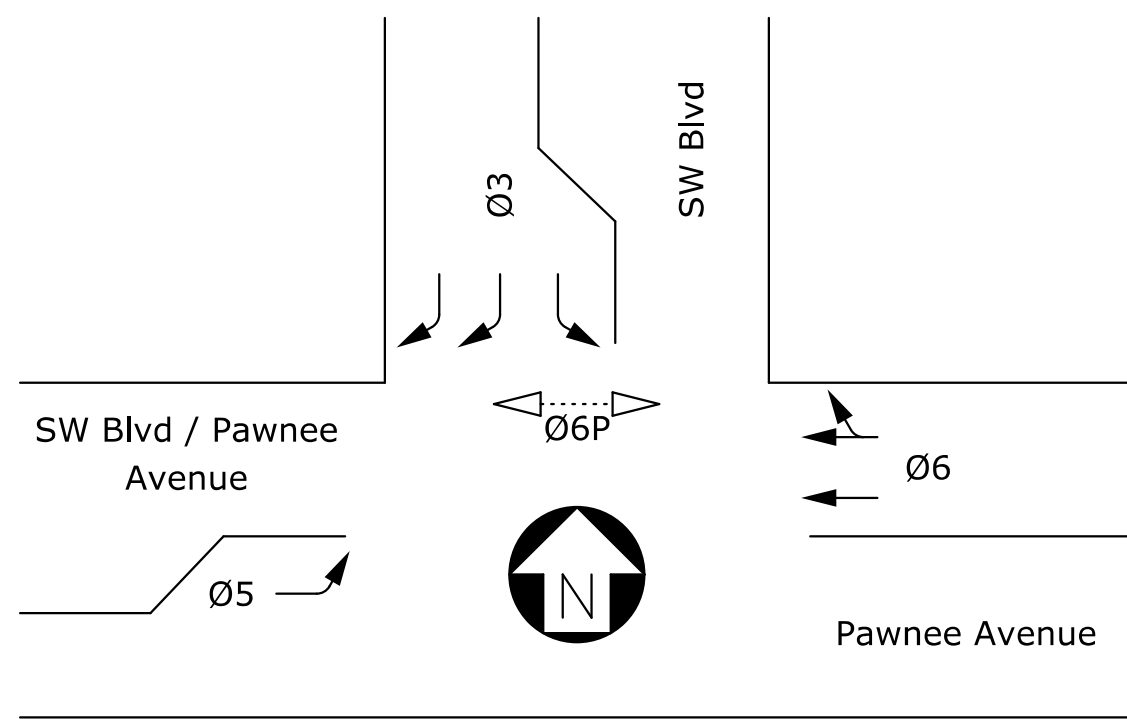
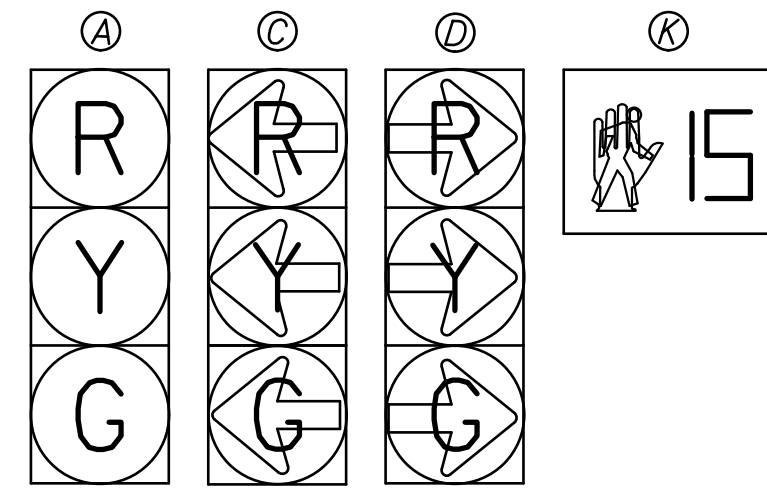


### SIGNAL PHASES

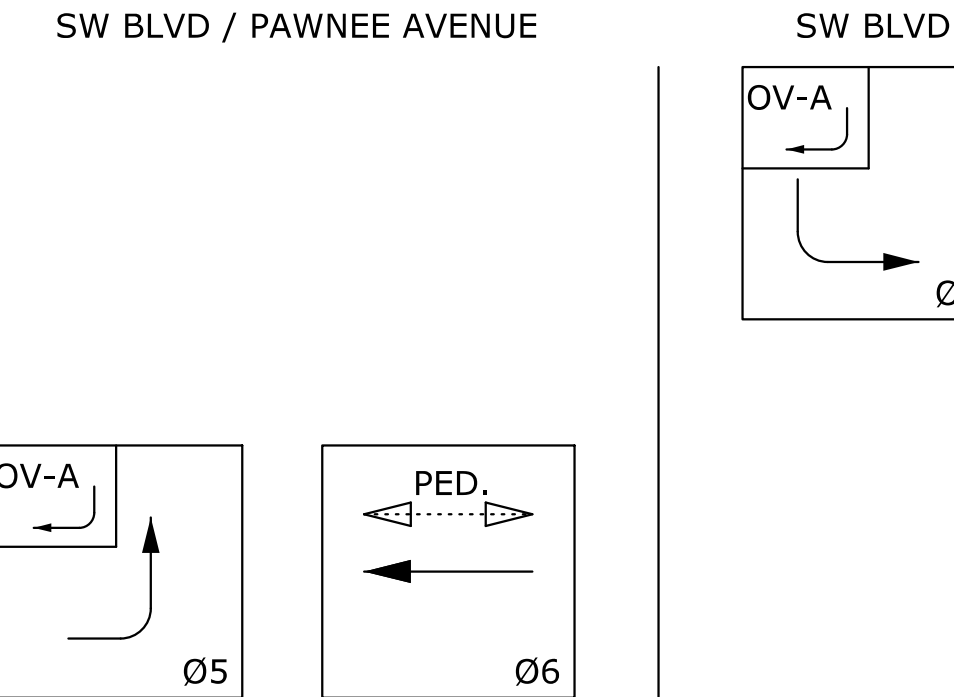


### SIGNAL FACES

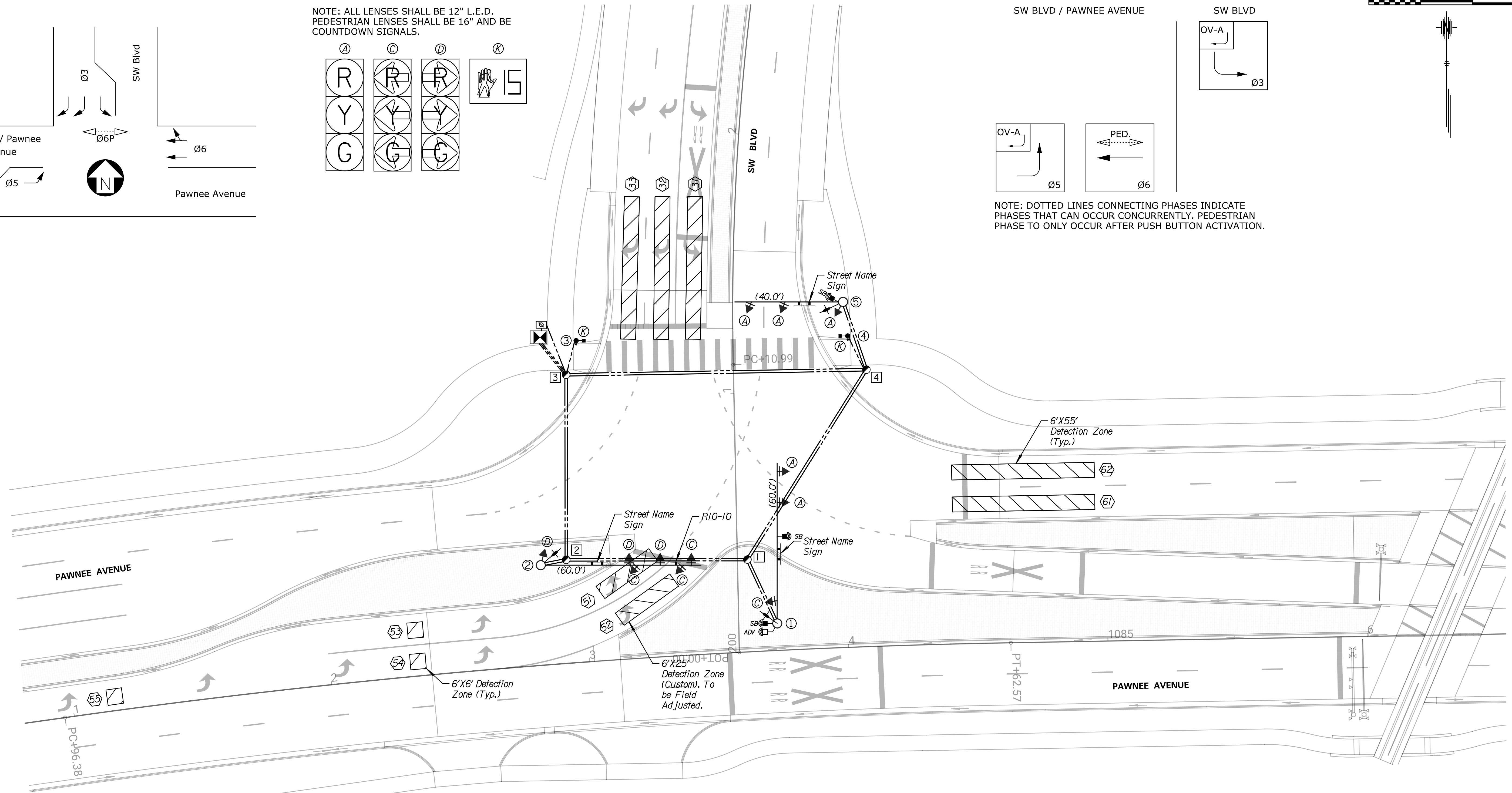
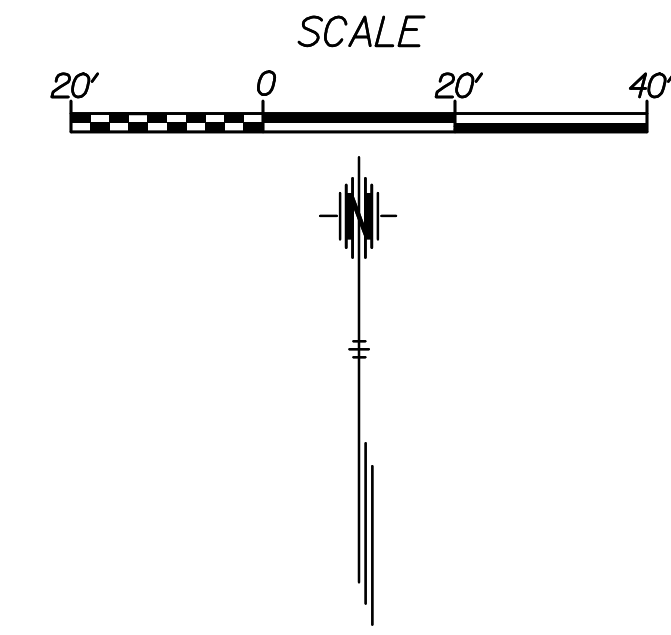
NOTE: ALL LENSES SHALL BE 12" L.E.D.  
PEDESTRIAN LENSES SHALL BE 16" AND BE  
COUNTDOWN SIGNALS.



### PHASE DIAGRAM



NOTE: DOTTED LINES CONNECTING PHASES INDICATE PHASES THAT CAN OCCUR CONCURRENTLY. PEDESTRIAN PHASE TO ONLY OCCUR AFTER PUSH BUTTON ACTIVATION.



#### GENERAL NOTES:

1. CONDUIT RUNS ARE APPROXIMATE & MAY BE FIELD ADJUSTED TO CLEAR OBSTRUCTIONS & FACILITATE WIRING, AS APPROVED BY THE ENGINEER. ALL CONDUIT RUNS SHALL BE STRAIGHT BETWEEN BOXES AND/OR FOUNDATIONS.
2. EXISTING FEATURES & UTILITIES ARE SHOWN FROM AVAILABLE INFORMATION & SHOULD BE CONSIDERED APPROXIMATE ONLY. IT IS THE RESPONSIBILITY OF THE CONTRACTOR TO VERIFY UTILITIES & THEIR EXACT LOCATION PRIOR TO CONSTRUCTION.
3. SEE "TRAFFIC SIGNAL INSTALLATION DETAIL SHEET" (TR-105) FOR SIGN SPACING AND ADDITIONAL DETAILS.
4. SEE PAVEMENT MARKING AND SIGNING SHEETS FOR PAVEMENT MARKING DETAILS.
5. THE CONCRETE PAD FOR THE CONTROLLER CABINET SHALL BE FLUSH AND CONTINUOUS WITH THE ADJACENT SIDEWALK FOR EASY ACCESS.

#### STRUCTURE LOCATIONS

POLE NO.	*TYPE	STATION	OFFSET	NORTHING	EASTING	**ELEV.
1	POLE	1083+72.89	10.42 LT.	1672973.47	1634699.70	1293.41
2	POLE	1082+83.99	38.54 LT.	1672995.92	1634608.49	1294.26
3	PED	1083+03.48	123.91 LT.	1673082.54	1634622.13	1294.88
4	PED	1084+04.08	120.03 LT.	1673084.34	1634726.87	1294.65
5	POLE	1084+02.84	133.22 LT.	1673097.47	1634725.08	1294.75
Meter	-	1082+89.50	135.39 LT.	1673092.92	1634606.74	1293.61
Cont.	-	1082+89.80	130.51 LT.	1673088.08	1634607.42	1293.83

#### SERVICE BOX LOCATIONS

BOX NO.	STATION	OFFSET	NORTHING	EASTING	**ELEV.
1	1083+62.68	35.59 LT.	1672998.10	1634688.18	1295.04
2	1082+93.80	39.87 LT.	1672998.00	1634618.30	1293.81
3	1082+98.90	111.06 LT.	1673069.39	1634618.30	1294.82
4	1084+10.56	106.77 LT.	1673071.33	1634734.07	1294.28

**TRANSYSTEMS**

245 N. WACO  
SUITE 222  
WICHITA, KANSAS 67202  
MAIN: 316-303-3000  
FAX: 316-462-5629

CONSULTANTS:

WEST STREET IMPROVEMENTS FROM PAWNEE TO HARRY

WICHITA, KANSAS

CITY OF WICHITA

REVISIONS:	MARK	DATE	DESCRIPTION