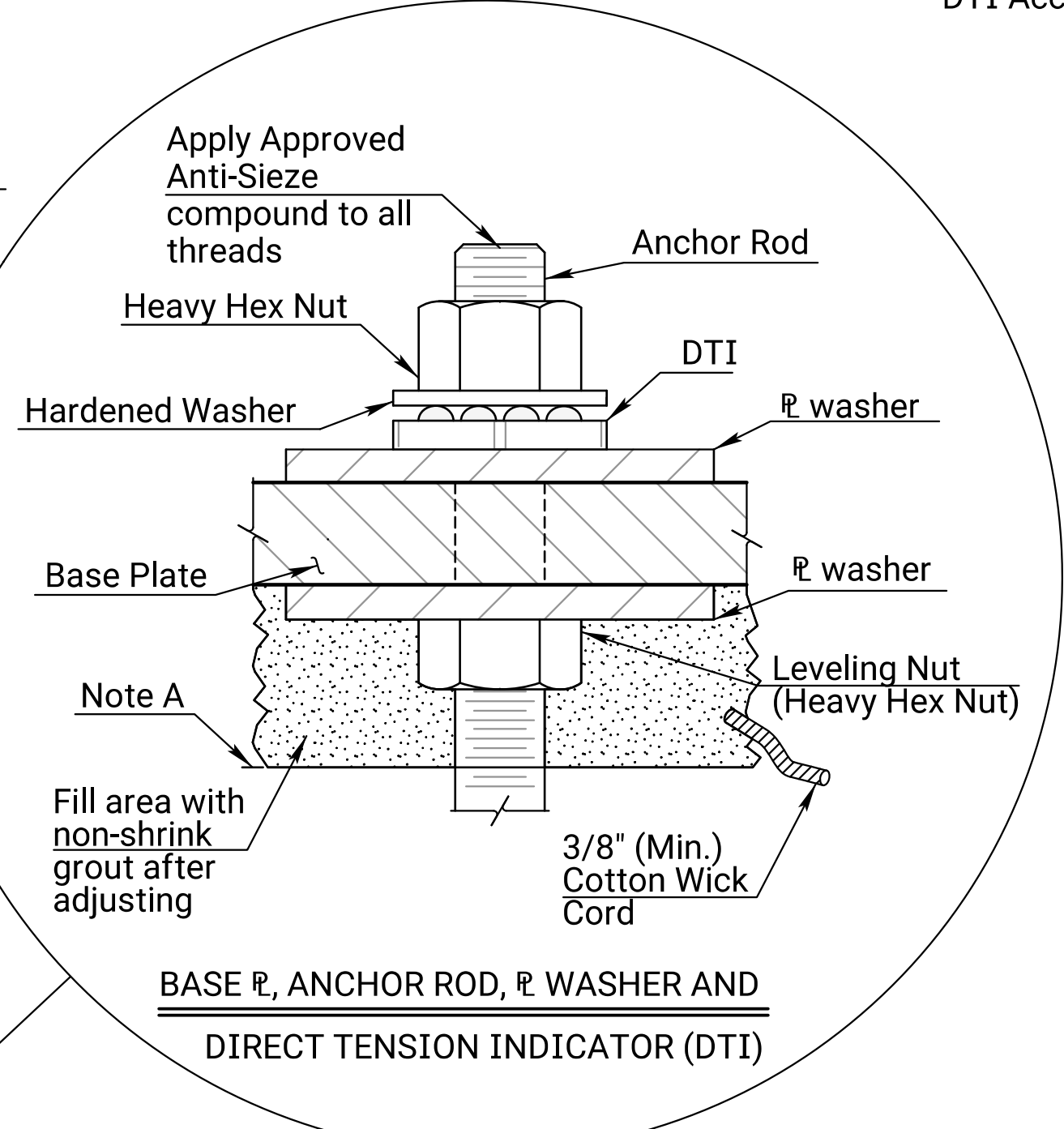


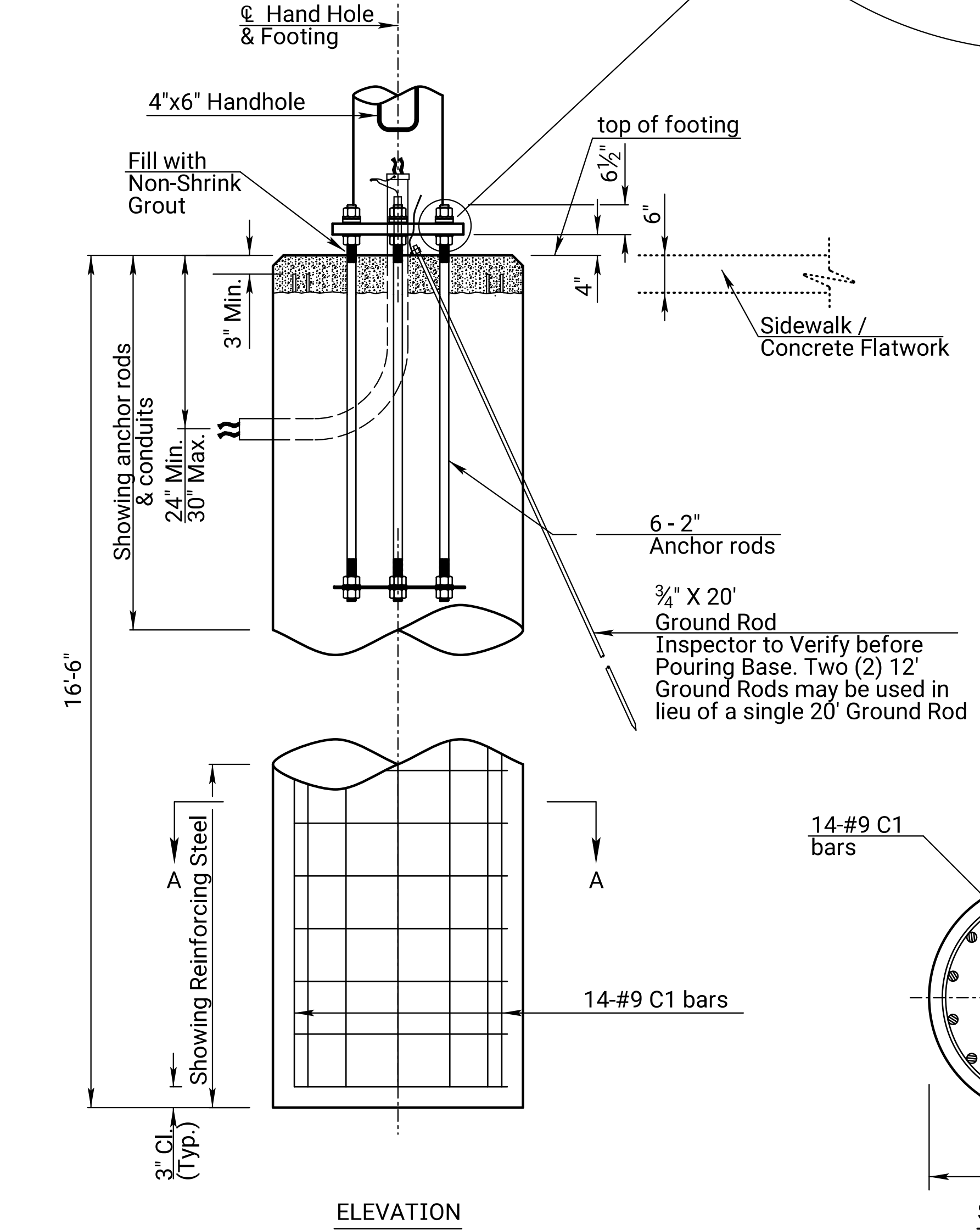
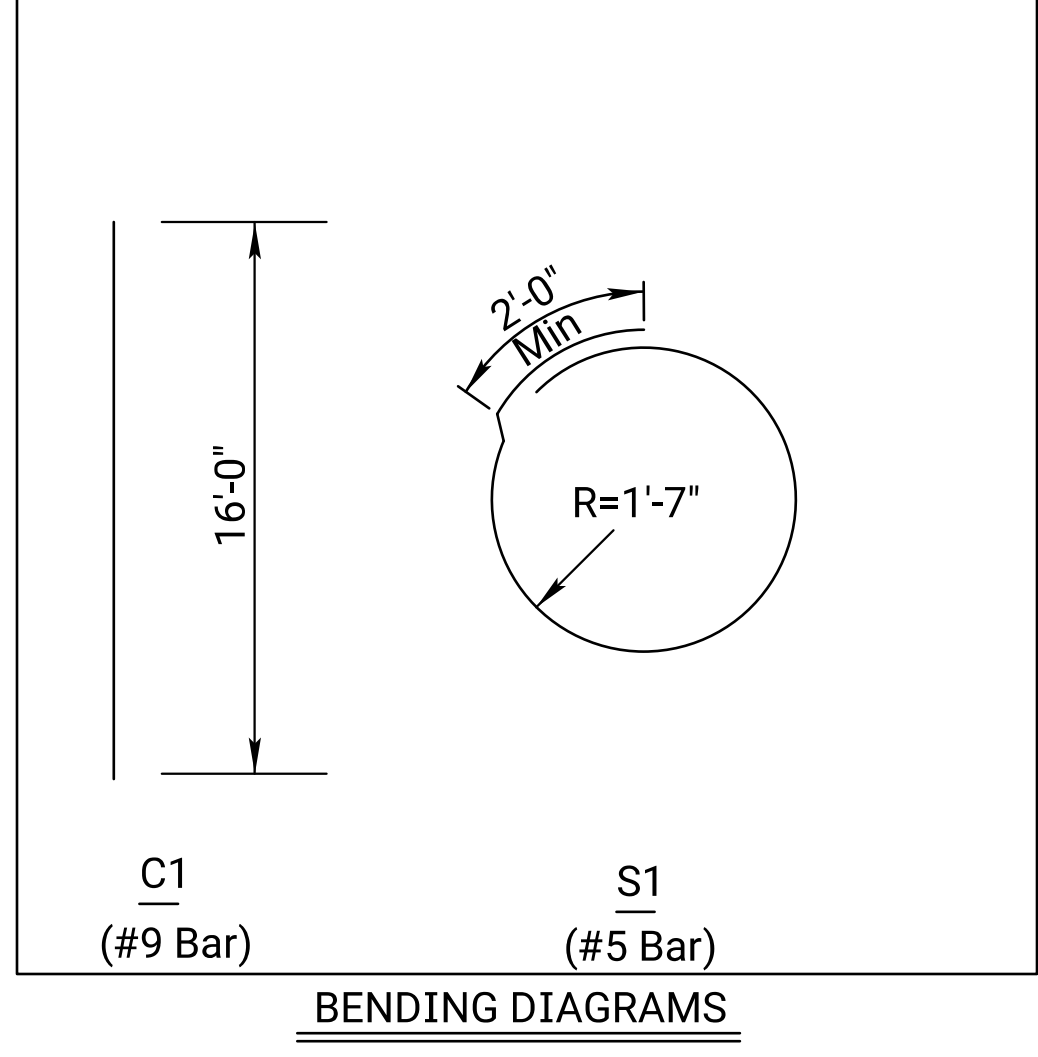
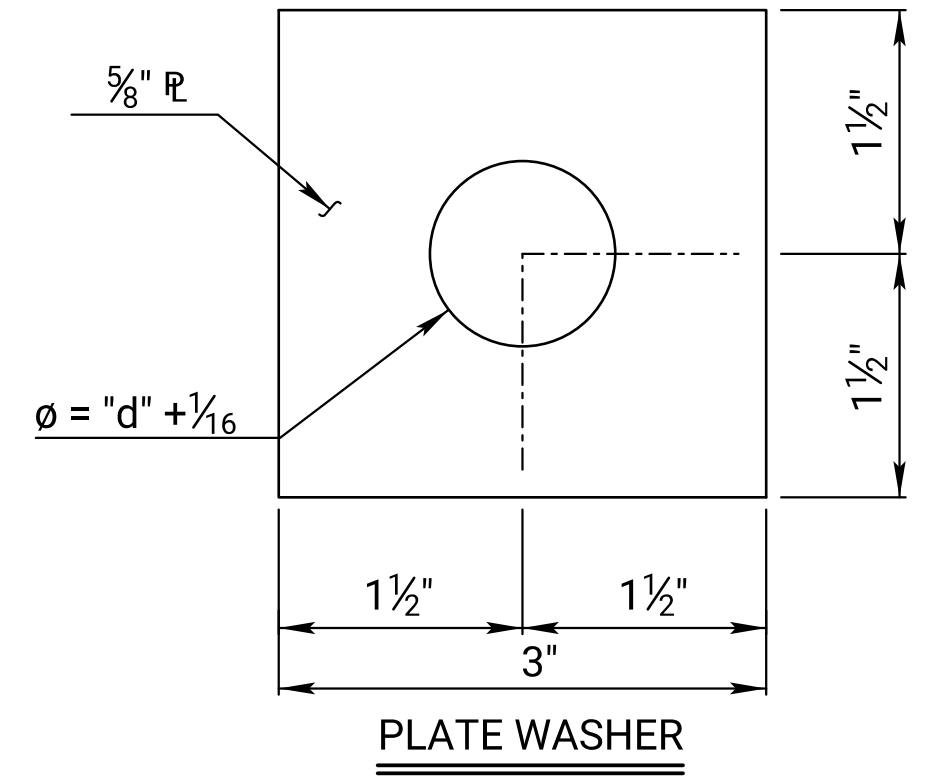
Note A:  
Top of Foundation OR Top of Sidewalk (if sidewalk at pole base). See Traffic Signal Plan Sheet for Approx. Elevation



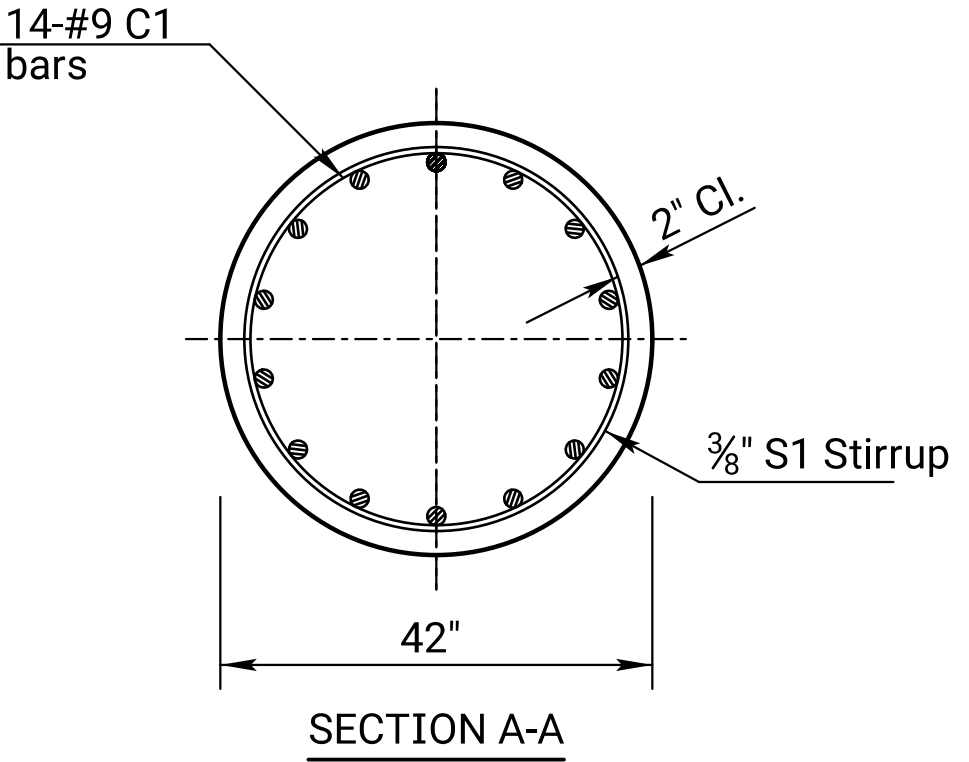
BASE  $\phi$ , ANCHOR ROD,  $\phi$  WASHER AND DIRECT TENSION INDICATOR (DTI)

$\Delta$  DTI Acceptable Range of Compression Load

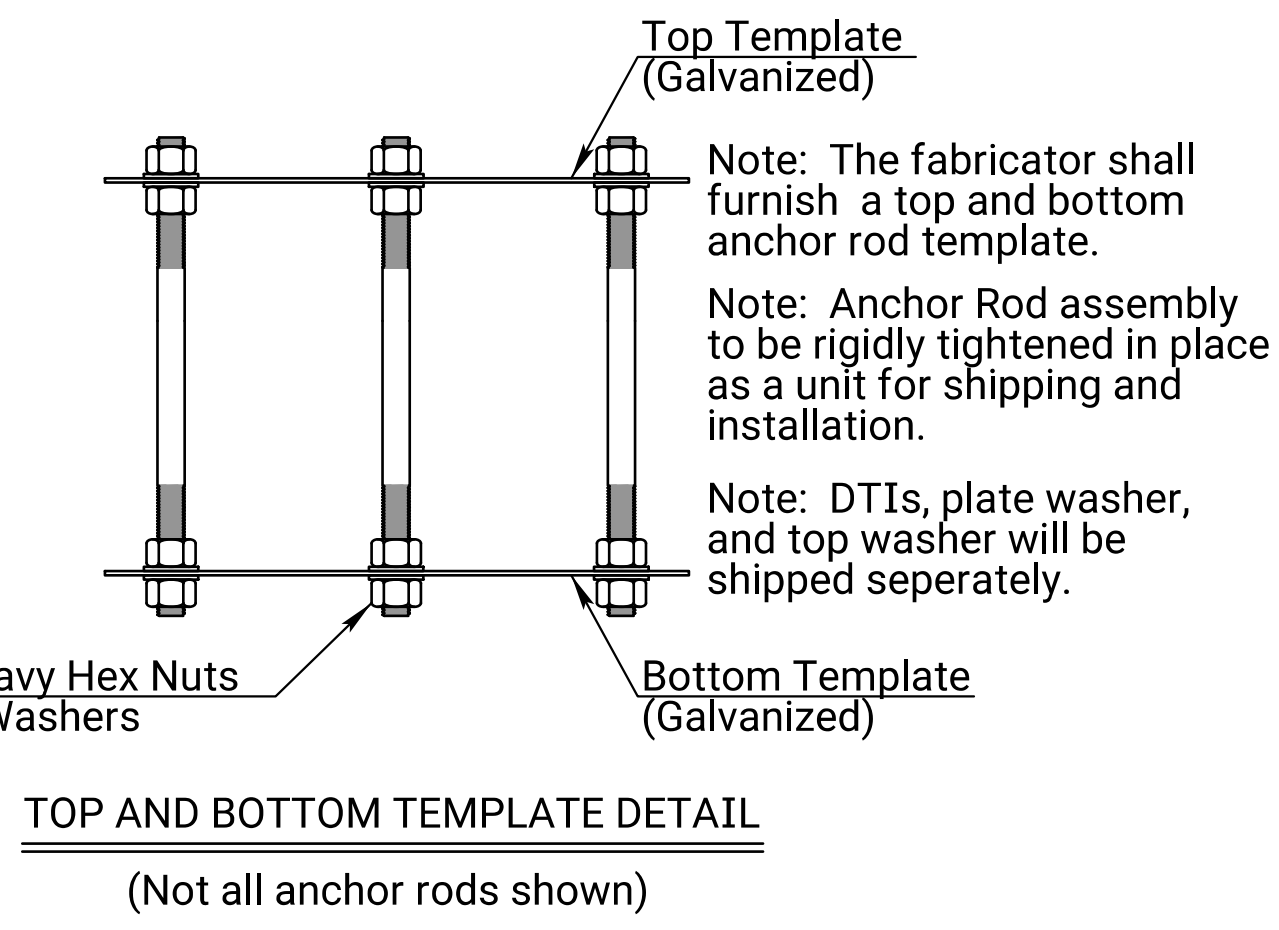
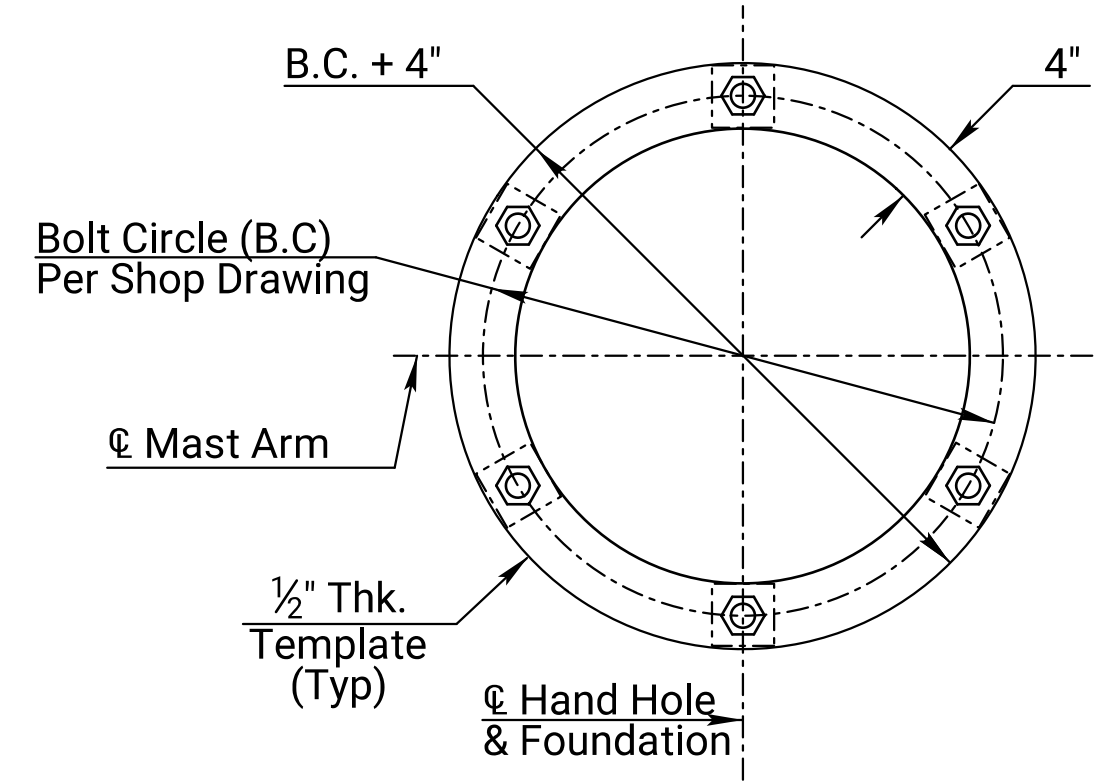
$\Delta$ DTI (Kips)	Anchor Rod Size
78.7 to 87.0	2"



ELEVATION



SECTION A-A



TOP AND BOTTOM TEMPLATE DETAIL  
(Not all anchor rods shown)

**Design Specifications:**

AASHTO Standard Specifications for Structural Supports for Highway Signs, Luminaries, and Traffic Signals, Sixth Edition 2013 and Current Interims

Reinforced Concrete Design - AASHTO Standard Specifications for Highway Bridges, 17th Edition

**Unit Stresses:**

Concrete (Grade 4.0)  $f'_c = 4,000$  psi  
Reinforcing Steel (Grade 60)  $F_y = 60,000$  psi  
Anchor Rod (ASTM F1554, Grade 55)  $F_y = 55,000$  psi

**Foundation Data:**

Foundation designed according to information provided in the Geotechnical Exploration Report provided by GSI Engineering dated 06/06/2023

**GENERAL NOTES**

Anchor rod hardware conforming to ASTM A563 heavy hex nuts, ASTM A709 grade 50 plate washers, ASTM F436 flat washers, and ASTM F2437 DTI washers with a compression load that complies with the DTI Acceptable Range of Compression Load, as shown in the table

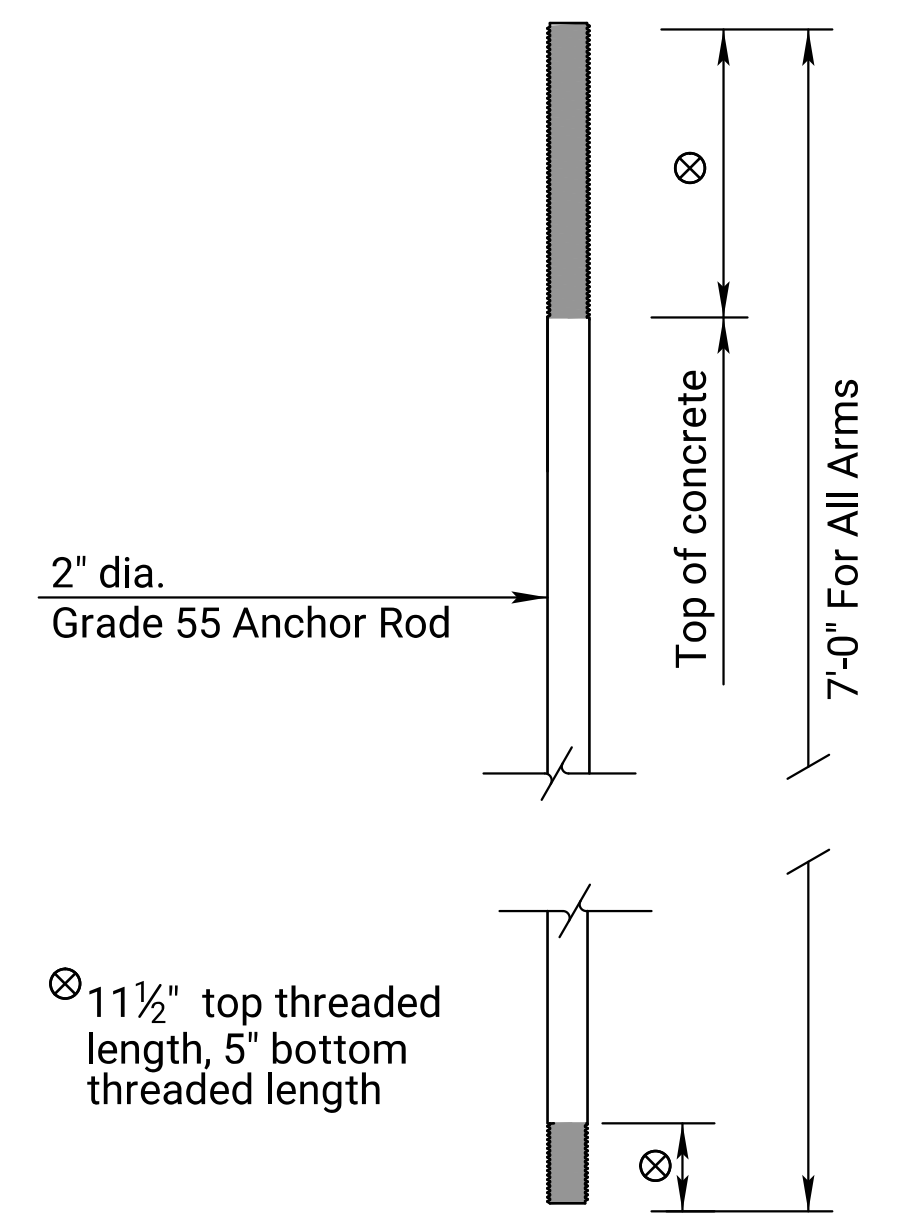
All high strength bolts, anchor rods (entire length), steel fasters and hardware shall be galvanized.

Excavate and cast footing to neat lines except to 1'-0" (+/-) which shall be formed. Immediately before placing any concrete, the contractor shall remove all loose material from the bottom of the hole. All soil used for backfilling around the top of the footing shall be thoroughly compacted as it is placed. All excess excavation shall be disposed of as approved by the engineer.

Poles and Mast Arms shall be constructed per the latest City of Wichita Standard Specifications for Traffic Signal Construction and contract plans.

Drilled shafts shall be constructed according to the latest City of Wichita Specifications.

FOUNDATION DETAILS ON THIS SHEET SHALL APPLY TO ALL TRAFFIC SIGNAL POLES ON THIS PROJECT ONLY.



ANCHOR ROD DETAILS  
(6 per pole Grade 55)

CONSULTANTS:

29TH STREET N & GREENWICH ROAD  
TRAFFIC SIGNALIZATION



REVISIONS:	MARK	DATE	DESCRIPTION

PROJ NO: 87 N-0720-01  
SCALE: NTS  
DATE: 9/25/2023  
DESIGNED BY: LCM  
DRAWN BY: SSP  
CHECKED BY: SGE

SHEET TITLE:  
**TRAFFIC SIGNAL FOUNDATION DETAILS**

SHEET NO.  
**310**  
SHEET 310 OF 517