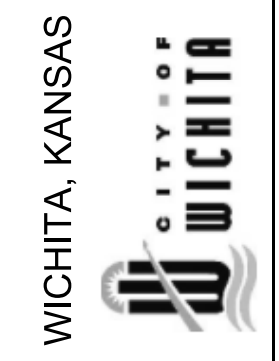


CONSULTANTS:

WEST STREET IMPROVEMENTS
 FROM PAWNEE TO HARRY

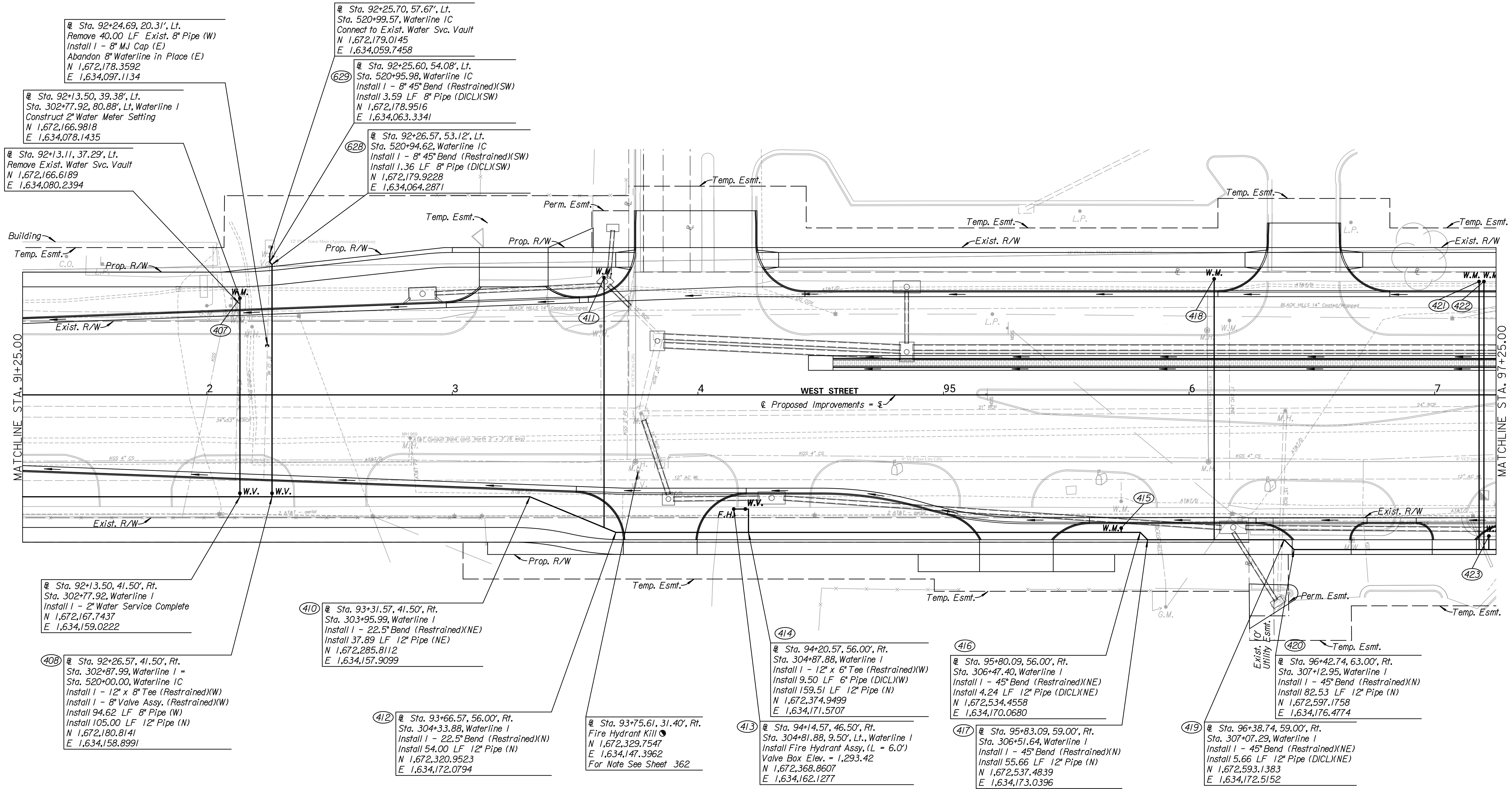


REVISIONS:	MARK	DATE	DESCRIPTION

PROJ NO: 87 N-0720-01
 SCALE: 1"=20'
 DATE: 9/25/2023
 DESIGNED BY: DAN
 DRAWN BY: DAN
 CHECKED BY: MDB

SHEET TITLE:
WEST STREET WATERLINE IMPROVEMENTS

SHEET NO.
363
 SHEET 363 OF 517



407 @ Sta. 92+24.69, 20.31', Lt.
 Remove 40.00 LF Exist. 8" Pipe (W)
 Install 1 - 8" MJ Cap (E)
 Abandon 8" Waterline in Place (E)
 N 1,672,178.3592
 E 1,634,097.1134

408 @ Sta. 92+13.50, 39.38', Lt.
 Sta. 302+77.92, 80.88', Lt, Waterline I
 Construct 2" Water Meter Setting
 N 1,672,166.9818
 E 1,634,078.1435

409 @ Sta. 92+13.11, 37.29', Lt.
 Remove Exist. Water Svc. Vault
 N 1,672,166.6189
 E 1,634,080.2394

629 @ Sta. 92+25.70, 57.67', Lt.
 Sta. 520+99.57, Waterline 1C
 Connect to Exist. Water Svc. Vault
 N 1,672,179.0145
 E 1,634,059.7458

628 @ Sta. 92+25.60, 54.08', Lt.
 Sta. 520+95.98, Waterline 1C
 Install 1 - 8" 45° Bend (Restrained)(SW)
 Install 3.59 LF 8" Pipe (D1CL)(SW)
 N 1,672,178.9516
 E 1,634,063.3341

628 @ Sta. 92+26.57, 53.12', Lt.
 Sta. 520+94.62, Waterline 1C
 Install 1 - 8" 45° Bend (Restrained)(SW)
 Install 1.36 LF 8" Pipe (D1CL)(SW)
 N 1,672,179.9228
 E 1,634,064.2871

410 @ Sta. 92+13.50, 41.50', Rt.
 Sta. 302+77.92, Waterline I
 Install 1 - 2" Water Service Complete
 N 1,672,167.7437
 E 1,634,159.0222

408 @ Sta. 92+26.57, 41.50', Rt.
 Sta. 302+87.99, Waterline I =
 Sta. 520+00.00, Waterline 1C
 Install 1 - 12" x 8" Tee (Restrained)(W)
 Install 1 - 8" Valve Assy. (Restrained)(W)
 Install 94.62 LF 8" Pipe (W)
 Install 105.00 LF 12" Pipe (N)
 N 1,672,180.8141
 E 1,634,158.8991

410 @ Sta. 93+31.57, 41.50', Rt.
 Sta. 303+95.99, Waterline I
 Install 1 - 22.5° Bend (Restrained)(NE)
 Install 37.89 LF 12" Pipe (NE)
 N 1,672,285.8112
 E 1,634,157.9099

412 @ Sta. 93+66.57, 56.00', Rt.
 Sta. 304+33.88, Waterline I
 Install 1 - 22.5° Bend (Restrained)(N)
 Install 54.00 LF 12" Pipe (N)
 N 1,672,320.9523
 E 1,634,172.0794

413 @ Sta. 93+75.61, 31.40', Rt.
 Fire Hydrant Kill
 N 1,672,329.7547
 E 1,634,147.3962
 For Note See Sheet 362

414 @ Sta. 94+20.57, 56.00', Rt.
 Sta. 304+87.88, Waterline I
 Install 1 - 12" x 6" Tee (Restrained)(W)
 Install 9.50 LF 6" Pipe (D1CL)(W)
 Install 159.51 LF 12" Pipe (N)
 N 1,672,374.9499
 E 1,634,171.5707

413 @ Sta. 94+14.57, 46.50', Rt.
 Sta. 304+81.88, 9.50', Lt, Waterline I
 Install Fire Hydrant Assy. (L = 6.0')
 Valve Box Elev. = 1,293.42
 N 1,672,368.8607
 E 1,634,162.1277

416 @ Sta. 95+80.09, 56.00', Rt.
 Sta. 306+47.40, Waterline I
 Install 1 - 45° Bend (Restrained)(NE)
 Install 4.24 LF 12" Pipe (D1CL)(NE)
 N 1,672,534.4558
 E 1,634,170.0680

417 @ Sta. 95+83.09, 59.00', Rt.
 Sta. 306+51.64, Waterline I
 Install 1 - 45° Bend (Restrained)(N)
 Install 55.66 LF 12" Pipe (N)
 N 1,672,537.4839
 E 1,634,173.0396

420 @ Sta. 96+42.74, 63.00', Rt.
 Sta. 307+12.95, Waterline I
 Install 1 - 45° Bend (Restrained)(N)
 Install 82.53 LF 12" Pipe (N)
 N 1,672,597.1758
 E 1,634,176.4774

419 @ Sta. 96+38.74, 59.00', Rt.
 Sta. 307+07.29, Waterline I
 Install 1 - 45° Bend (Restrained)(NE)
 Install 5.66 LF 12" Pipe (D1CL)(NE)
 N 1,672,593.1383
 E 1,634,172.5152