

TRANSYSTEMS
 245 N. WACO
 SUITE 222
 WICHITA, KANSAS 67202
 MAIN: 316-303-3000
 FAX: 316-462-5629



CONSULTANTS:

WEST STREET IMPROVEMENTS
 FROM PAWNEE TO HARRY



REVISIONS:	MARK	DATE	DESCRIPTION

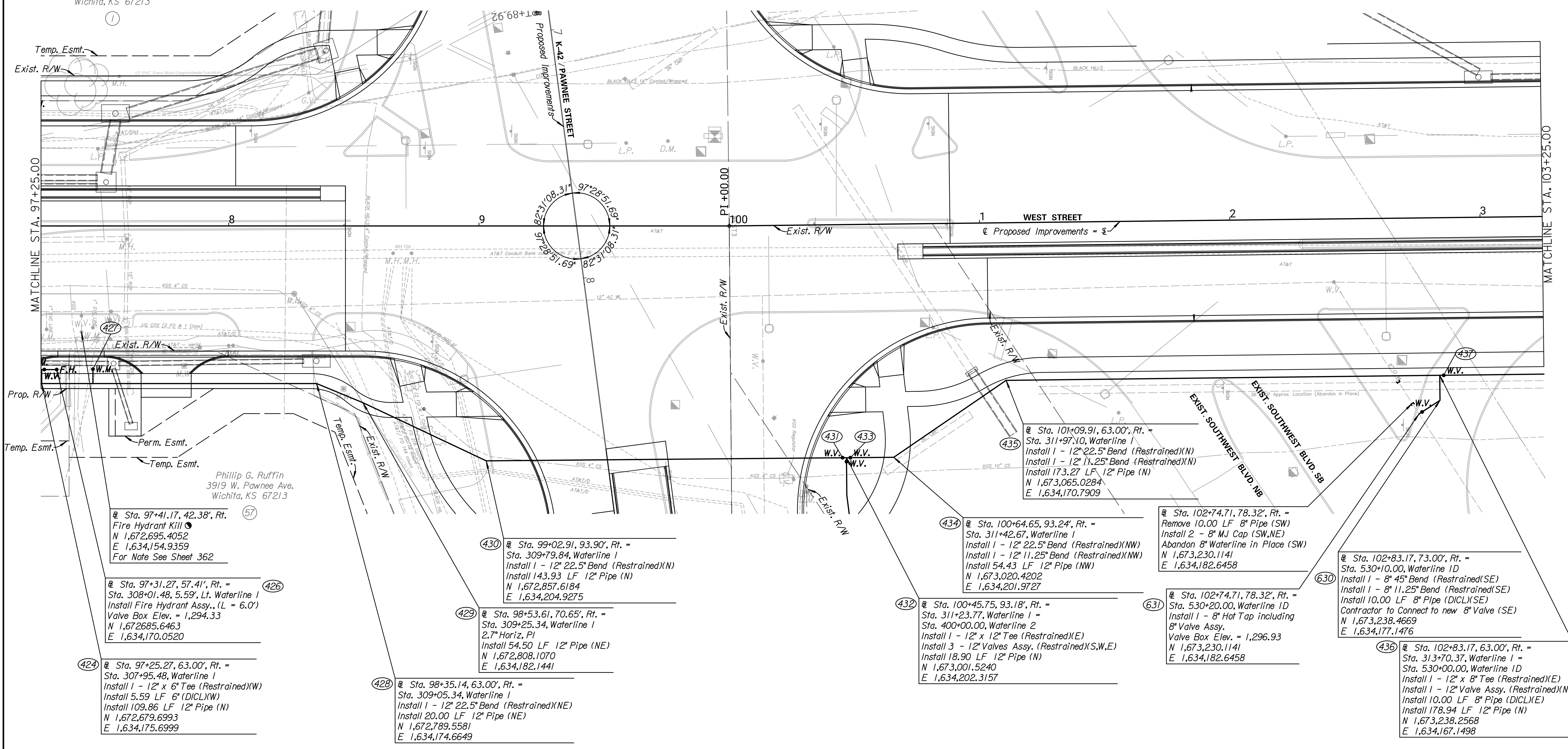
PROJ NO: 87 N-0720-01
 SCALE: 1"=20'
 DATE: 9/25/2023
 DESIGNED BY: DAN
 DRAWN BY: DAN
 CHECKED BY: MDB

SHEET TITLE:
WEST STREET WATERLINE IMPROVEMENTS

SHEET NO.
364
 SHEET 364 OF 517

Golden Arch LTD Partnership
 2437 S. West St.
 Wichita, KS 67213

Phillip G. Ruffin
 3919 W. Pawnee Ave.
 Wichita, KS 67213



424 @ Sta. 97+25.27, 63.00', Rt. =
 Sta. 307+95.48, Waterline 1
 Install 1 - 12" x 6" Tee (Restrained)(W)
 Install 5.59 LF 6" (D)CL(W)
 Install 109.86 LF 12" Pipe (N)
 N 1,672,679.6993
 E 1,634,175.6999

426 @ Sta. 97+31.27, 57.41', Rt. =
 Sta. 308+01.48, 5.59', Lt. Waterline 1
 Install Fire Hydrant Assy., (L = 6.0')
 Valve Box Elev. = 1,294.33
 N 1,672,685.6463
 E 1,634,170.0520

427 @ Sta. 97+41.17, 42.38', Rt. =
 Fire Hydrant Kill
 N 1,672,695.4052
 E 1,634,154.9359
 For Note See Sheet 362

428 @ Sta. 98+35.14, 63.00', Rt. =
 Sta. 309+05.34, Waterline 1
 Install 1 - 12" 22.5° Bend (Restrained)(NE)
 Install 20.00 LF 12" Pipe (NE)
 N 1,672,789.5581
 E 1,634,174.6649

429 @ Sta. 98+53.61, 70.65', Rt. =
 Sta. 309+25.34, Waterline 1
 2.7" Horiz. PI
 Install 54.50 LF 12" Pipe (NE)
 N 1,672,808.1070
 E 1,634,182.1441

430 @ Sta. 99+02.91, 93.90', Rt. =
 Sta. 309+79.84, Waterline 1
 Install 1 - 12" 22.5° Bend (Restrained)(N)
 Install 143.93 LF 12" Pipe (N)
 N 1,672,857.6184
 E 1,634,204.9275

432 @ Sta. 100+45.75, 93.18', Rt. =
 Sta. 311+23.77, Waterline 1 =
 Sta. 400+00.00, Waterline 2
 Install 1 - 12" x 12" Tee (Restrained)(E)
 Install 3 - 12" Valves Assy. (Restrained)(S,W,E)
 Install 18.90 LF 12" Pipe (N)
 N 1,673,001.5240
 E 1,634,202.3157

434 @ Sta. 100+64.65, 93.24', Rt. =
 Sta. 311+42.67, Waterline 1
 Install 1 - 12" 22.5° Bend (Restrained)(NW)
 Install 1 - 12" 11.25° Bend (Restrained)(NW)
 Install 54.43 LF 12" Pipe (NW)
 N 1,673,020.4202
 E 1,634,201.9727

435 @ Sta. 101+09.91, 63.00', Rt. =
 Sta. 311+97.10, Waterline 1
 Install 1 - 12" 22.5° Bend (Restrained)(N)
 Install 1 - 12" 11.25° Bend (Restrained)(N)
 Install 173.27 LF 12" Pipe (N)
 N 1,673,065.0284
 E 1,634,170.7909

631 @ Sta. 102+74.71, 78.32', Rt. =
 Sta. 530+20.00, Waterline 1D
 Install 1 - 8" Hot Tap including
 8" Valve Assy.
 Valve Box Elev. = 1,296.93
 N 1,673,230.1141
 E 1,634,182.6458

630 @ Sta. 102+83.17, 73.00', Rt. =
 Sta. 530+10.00, Waterline 1D
 Install 1 - 8" 45° Bend (Restrained)(SE)
 Install 1 - 8" 11.25° Bend (Restrained)(SE)
 Install 10.00 LF 8" Pipe (D)CL(SE)
 Contractor to Connect to new 8" Valve (SE)
 N 1,673,238.4669
 E 1,634,177.1476

436 @ Sta. 102+83.17, 63.00', Rt. =
 Sta. 313+70.37, Waterline 1 =
 Sta. 530+00.00, Waterline 1D
 Install 1 - 12" x 8" Tee (Restrained)(E)
 Install 1 - 12" Valve Assy. (Restrained)(N)
 Install 10.00 LF 8" Pipe (D)CL(E)
 Install 178.94 LF 12" Pipe (N)
 N 1,673,238.2568
 E 1,634,167.1498

IF THIS DRAWING IS LESS THAN 22" X 36" IT IS A REDUCED SIZE DRAWING