

CONSULTANTS:

WEST STREET IMPROVEMENTS
 FROM PAWNEE TO HARRY

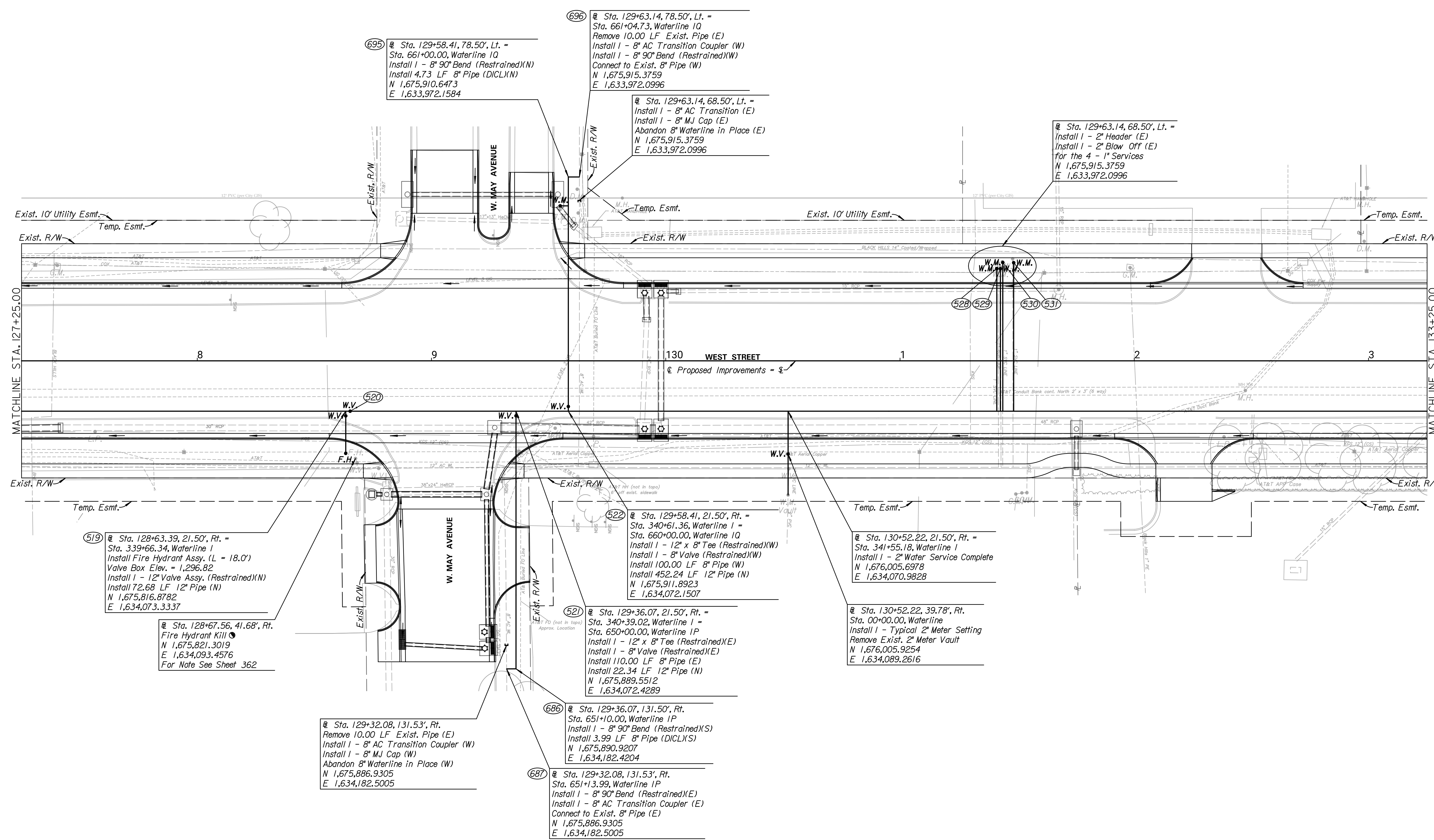


REVISIONS:	MARK	DATE	DESCRIPTION

PROJ NO: 87 N-0720-01
 SCALE: 1"=20'
 DATE: 9/25/2023
 DESIGNED BY: DAN
 DRAWN BY: DAN
 CHECKED BY: MDB

SHEET TITLE:
WEST STREET WATERLINE IMPROVEMENTS

SHEET NO.
369
 SHEET 369 OF 517



695 @ Sta. 129+58.41, 78.50', Lt. =
 Sta. 661+00.00, Waterline 1Q
 Install 1 - 8" 90° Bend (Restrained)(N)
 Install 4.73 LF 8" Pipe (DCL)(N)
 N 1,675,910.6473
 E 1,633,972.1584

696 @ Sta. 129+63.14, 78.50', Lt. =
 Sta. 661+04.73, Waterline 1Q
 Remove 10.00 LF Exist. Pipe (E)
 Install 1 - 8" AC Transition Coupler (W)
 Install 1 - 8" 90° Bend (Restrained)(W)
 Connect to Exist. 8" Pipe (W)
 N 1,675,915.3759
 E 1,633,972.0996

@ Sta. 129+63.14, 68.50', Lt. =
 Install 1 - 8" AC Transition (E)
 Install 1 - 8" MJ Cap (E)
 Abandon 8" Waterline in Place (E)
 N 1,675,915.3759
 E 1,633,972.0996

@ Sta. 129+63.14, 68.50', Lt. =
 Install 1 - 2" Header (E)
 Install 1 - 2" Blow Off (E)
 for the 4 - 1" Services
 N 1,675,915.3759
 E 1,633,972.0996

519 @ Sta. 128+63.39, 21.50', Rt. =
 Sta. 339+66.34, Waterline 1
 Install Fire Hydrant Assy. (L = 18.0')
 Valve Box Elev. = 1,296.82
 Install 1 - 12" Valve Assy. (Restrained)(N)
 Install 72.68 LF 12" Pipe (N)
 N 1,675,816.8782
 E 1,634,073.3337

@ Sta. 128+67.56, 41.68', Rt.
 Fire Hydrant Kill
 N 1,675,821.3019
 E 1,634,093.4576
 For Note See Sheet 362

522 @ Sta. 129+58.41, 21.50', Rt. =
 Sta. 340+61.36, Waterline 1 =
 Sta. 660+00.00, Waterline 1Q
 Install 1 - 12" x 8" Tee (Restrained)(W)
 Install 1 - 8" Valve (Restrained)(W)
 Install 100.00 LF 8" Pipe (W)
 Install 452.24 LF 12" Pipe (N)
 N 1,675,911.8923
 E 1,634,072.1507

@ Sta. 130+52.22, 21.50', Rt. =
 Sta. 341+55.18, Waterline 1
 Install 1 - 2" Water Service Complete
 N 1,676,005.6978
 E 1,634,070.9828

521 @ Sta. 129+36.07, 21.50', Rt. =
 Sta. 340+39.02, Waterline 1 =
 Sta. 650+00.00, Waterline 1P
 Install 1 - 12" x 8" Tee (Restrained)(E)
 Install 1 - 8" Valve (Restrained)(E)
 Install 110.00 LF 8" Pipe (E)
 Install 22.34 LF 12" Pipe (N)
 N 1,675,889.5512
 E 1,634,072.4289

@ Sta. 130+52.22, 39.78', Rt.
 Sta. 00+00.00, Waterline
 Install 1 - Typical 2" Meter Setting
 Remove Exist. 2" Meter Vault
 N 1,676,005.9254
 E 1,634,089.2616

@ Sta. 129+32.08, 131.53', Rt.
 Remove 10.00 LF Exist. Pipe (E)
 Install 1 - 8" AC Transition Coupler (W)
 Install 1 - 8" MJ Cap (W)
 Abandon 8" Waterline in Place (W)
 N 1,675,886.9305
 E 1,634,182.5005

686 @ Sta. 129+36.07, 131.50', Rt.
 Sta. 651+10.00, Waterline 1P
 Install 1 - 8" 90° Bend (Restrained)(S)
 Install 3.99 LF 8" Pipe (DCL)(S)
 N 1,675,890.9207
 E 1,634,182.4204

687 @ Sta. 129+32.08, 131.53', Rt.
 Sta. 651+3.99, Waterline 1P
 Install 1 - 8" 90° Bend (Restrained)(E)
 Install 1 - 8" AC Transition Coupler (E)
 Connect to Exist. 8" Pipe (E)
 N 1,675,886.9305
 E 1,634,182.5005