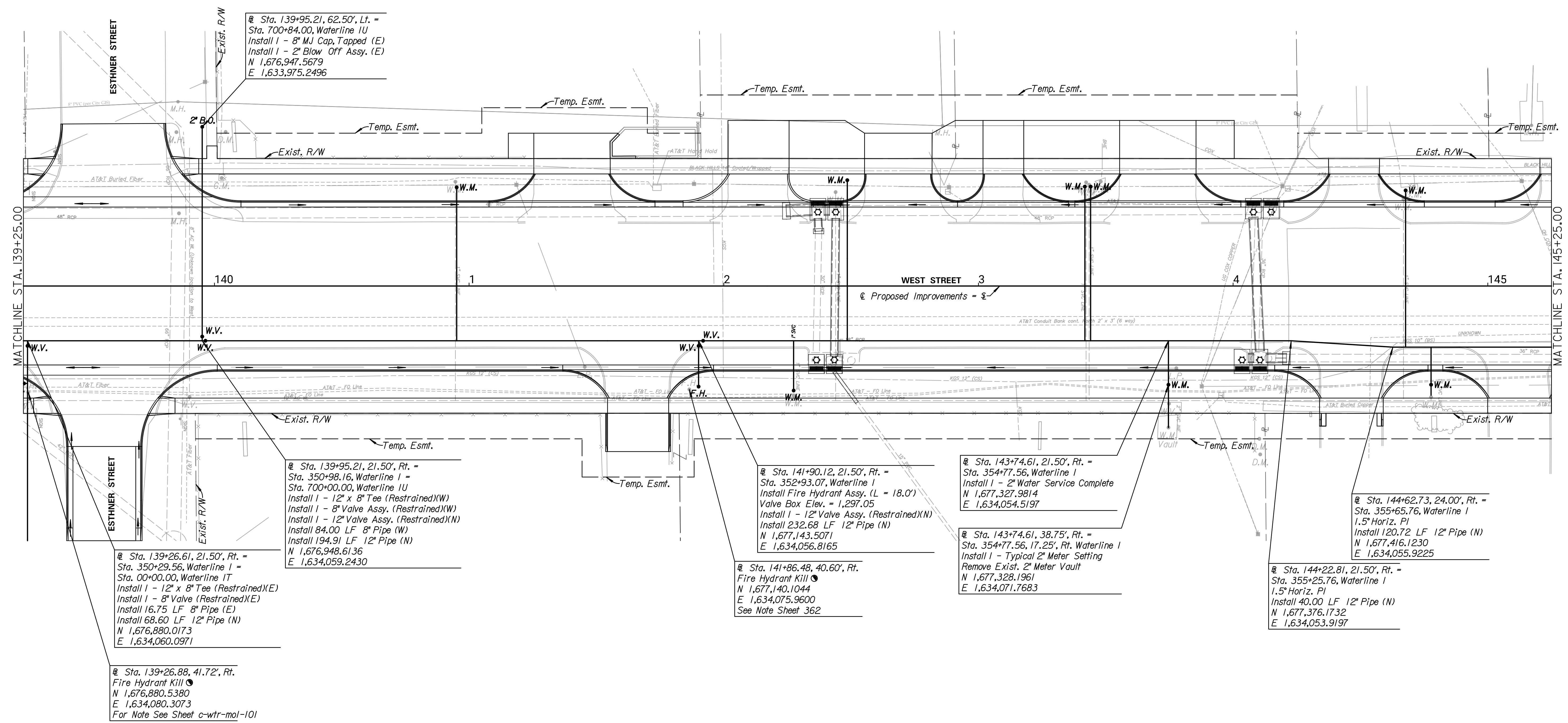


CONSULTANTS:

WEST STREET IMPROVEMENTS
 FROM PAWNEE TO HARRY



Sta. 139+95.21, 62.50', Lt. =
 Sta. 700+84.00, Waterline 1U
 Install 1 - 8" MJ Cap, Tapped (E)
 Install 1 - 2" Blow Off Assy. (E)
 N 1,676,947.5679
 E 1,633,975.2496

Sta. 139+95.21, 21.50', Rt. =
 Sta. 350+98.16, Waterline 1 =
 Sta. 700+00.00, Waterline 1U
 Install 1 - 12" x 8" Tee (Restrained)(W)
 Install 1 - 8" Valve Assy. (Restrained)(W)
 Install 1 - 12" Valve Assy. (Restrained)(N)
 Install 84.00 LF 8" Pipe (W)
 Install 194.91 LF 12" Pipe (N)
 N 1,676,948.6136
 E 1,634,059.2430

Sta. 139+26.61, 21.50', Rt. =
 Sta. 350+29.56, Waterline 1 =
 Sta. 00+00.00, Waterline 1T
 Install 1 - 12" x 8" Tee (Restrained)(E)
 Install 1 - 8" Valve (Restrained)(E)
 Install 16.75 LF 8" Pipe (E)
 Install 68.60 LF 12" Pipe (N)
 N 1,676,880.0173
 E 1,634,060.0971

Sta. 139+26.88, 41.72', Rt.
 Fire Hydrant Kill
 N 1,676,880.5380
 E 1,634,080.3073
 For Note See Sheet c-wtr-mol-101

Sta. 141+86.48, 40.60', Rt.
 Fire Hydrant Kill
 N 1,677,140.1044
 E 1,634,075.9600
 See Note Sheet 362

Sta. 141+90.12, 21.50', Rt. =
 Sta. 352+93.07, Waterline 1
 Install Fire Hydrant Assy. (L = 18.0')
 Valve Box Elev. = 1,297.05
 Install 1 - 12" Valve Assy. (Restrained)(N)
 Install 232.68 LF 12" Pipe (N)
 N 1,677,143.5071
 E 1,634,056.8165

Sta. 143+74.61, 21.50', Rt. =
 Sta. 354+77.56, Waterline 1
 Install 1 - 2" Water Service Complete
 N 1,677,327.9814
 E 1,634,054.5197

Sta. 143+74.61, 38.75', Rt. =
 Sta. 354+77.56, 17.25', Rt. Waterline 1
 Install 1 - Typical 2" Meter Setting
 Remove Exist. 2" Meter Vault
 N 1,677,328.1961
 E 1,634,071.7683

Sta. 144+62.73, 24.00', Rt. =
 Sta. 355+65.76, Waterline 1
 1.5" Horiz. PI
 Install 120.72 LF 12" Pipe (N)
 N 1,677,416.1230
 E 1,634,055.9225

Sta. 144+22.81, 21.50', Rt. =
 Sta. 355+25.76, Waterline 1
 1.5" Horiz. PI
 Install 40.00 LF 12" Pipe (N)
 N 1,677,376.1732
 E 1,634,053.9197

REVISIONS:	MARK	DATE	DESCRIPTION

PROJ NO: 87 N-0720-01
 SCALE: 1"=20'
 DATE: 9/25/2023
 DESIGNED BY: DAN
 DRAWN BY: DAN
 CHECKED BY: MDB

SHEET TITLE:
WEST STREET WATERLINE IMPROVEMENTS

SHEET NO.
371
 SHEET 371 OF 517