

CONSULTANTS:

WEST STREET IMPROVEMENTS FROM PAWNEE TO HARRY

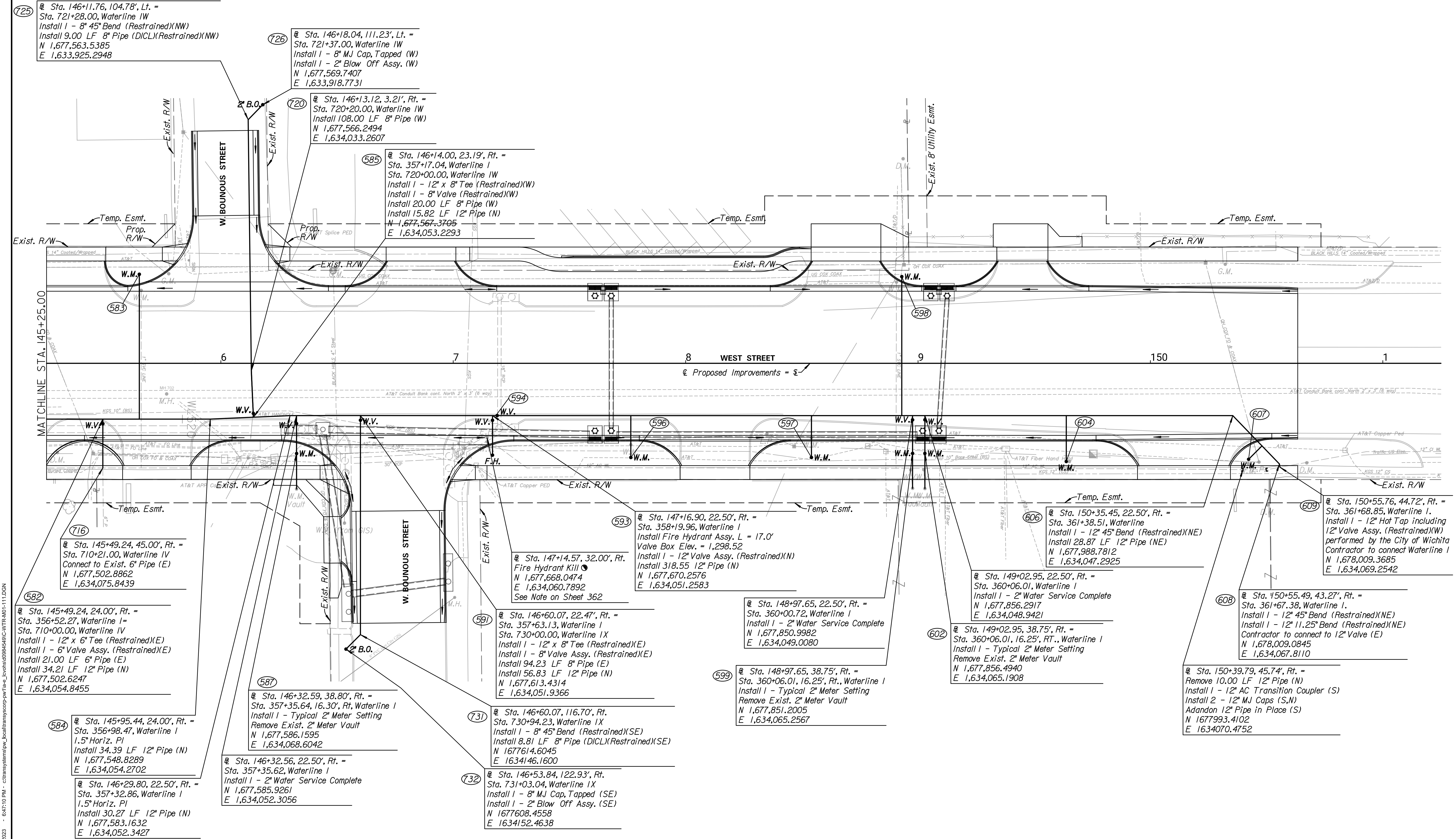


REVISIONS:	DESCRIPTION	MARK	DATE

PROJ NO: 87 N-0720-01
 SCALE: 1"=20'
 DATE: 9/25/2023
 DESIGNED BY: DAN
 DRAWN BY: DAN
 CHECKED BY: MDB

SHEET TITLE:
WEST STREET WATERLINE IMPROVEMENTS

SHEET NO.
373
 SHEET 373 OF 517



725 @ Sta. 146+11.76, 104.78', Lt. = Sta. 721+28.00, Waterline IW
 Install 1 - 8" 45° Bend (Restrained)(NW)
 Install 9.00 LF 8" Pipe (DCL)(Restrained)(NW)
 N 1,677,563.5385
 E 1,633,925.2948

726 @ Sta. 146+18.04, 111.23', Lt. = Sta. 721+37.00, Waterline IW
 Install 1 - 8" MJ Cap, Tapped (W)
 Install 1 - 2" Blow Off Assy. (W)
 N 1,677,569.7407
 E 1,633,918.7731

720 @ Sta. 146+13.12, 3.21', Rt. = Sta. 720+20.00, Waterline IW
 Install 108.00 LF 8" Pipe (W)
 N 1,677,566.2494
 E 1,634,033.2607

585 @ Sta. 146+14.00, 23.19', Rt. = Sta. 357+17.04, Waterline I
 Sta. 720+00.00, Waterline IW
 Install 1 - 12" x 8" Tee (Restrained)(W)
 Install 1 - 8" Valve (Restrained)(W)
 Install 20.00 LF 8" Pipe (W)
 Install 15.82 LF 12" Pipe (N)
 N 1,677,567.3705
 E 1,634,053.2293

593 @ Sta. 147+16.90, 22.50', Rt. = Sta. 358+19.96, Waterline I
 Install Fire Hydrant Assy. L = 17.0'
 Valve Box Elev. = 1,298.52
 Install 1 - 12" Valve Assy. (Restrained)(N)
 Install 318.55 12" Pipe (N)
 N 1,677,670.2576
 E 1,634,051.2583

606 @ Sta. 150+35.45, 22.50', Rt. = Sta. 361+38.51, Waterline I
 Install 1 - 12" 45° Bend (Restrained)(NE)
 Install 28.87 LF 12" Pipe (NE)
 N 1,677,988.7812
 E 1,634,047.2925

609 @ Sta. 150+55.76, 44.72', Rt. = Sta. 361+68.85, Waterline I.
 Install 1 - 12" Hot Tap including 12" Valve Assy. (Restrained)(W)
 Contractor to connect Waterline I
 N 1,678,009.3685
 E 1,634,069.2542

608 @ Sta. 150+55.49, 43.27', Rt. = Sta. 361+67.38, Waterline I.
 Install 1 - 12" 45° Bend (Restrained)(NE)
 Install 1 - 12" 11.25° Bend (Restrained)(NE)
 Contractor to connect to 12" Valve (E)
 N 1,678,009.0845
 E 1,634,067.8110

@ Sta. 150+39.79, 45.74', Rt. = Remove 10.00 LF 12" Pipe (N)
 Install 1 - 12" AC Transition Coupler (S)
 Install 2 - 12" MJ Caps (S,N)
 Adandon 12" Pipe in Place (S)
 N 1,677,993.4102
 E 1,634,070.4752

716 @ Sta. 145+49.24, 45.00', Rt. = Sta. 710+21.00, Waterline IV
 Connect to Exist. 6" Pipe (E)
 N 1,677,502.8862
 E 1,634,075.8439

582 @ Sta. 145+49.24, 24.00', Rt. = Sta. 356+52.27, Waterline I = Sta. 710+00.00, Waterline IV
 Install 1 - 12" x 6" Tee (Restrained)(E)
 Install 1 - 6" Valve Assy. (Restrained)(E)
 Install 21.00 LF 6" Pipe (E)
 Install 34.21 LF 12" Pipe (N)
 N 1,677,502.6247
 E 1,634,054.8455

587 @ Sta. 146+32.59, 38.80', Rt. = Sta. 357+35.64, 16.30', Rt, Waterline I
 Install 1 - Typical 2" Meter Setting
 Remove Exist. 2" Meter Vault
 N 1,677,585.1595
 E 1,634,068.6042

@ Sta. 146+32.56, 22.50', Rt. = Sta. 357+35.62, Waterline I
 Install 1 - 2" Water Service Complete
 N 1,677,585.9261
 E 1,634,052.3056

584 @ Sta. 145+95.44, 24.00', Rt. = Sta. 356+98.47, Waterline I
 1.5" Horiz. PI
 Install 34.39 LF 12" Pipe (N)
 N 1,677,548.8289
 E 1,634,054.2702

@ Sta. 146+29.80, 22.50', Rt. = Sta. 357+32.86, Waterline I
 1.5" Horiz. PI
 Install 30.27 LF 12" Pipe (N)
 N 1,677,583.1632
 E 1,634,052.3427

591 @ Sta. 146+60.07, 22.47', Rt. = Sta. 357+63.13, Waterline I
 Sta. 730+00.00, Waterline IX
 Install 1 - 12" x 8" Tee (Restrained)(E)
 Install 1 - 8" Valve Assy. (Restrained)(E)
 Install 94.23 LF 8" Pipe (E)
 Install 56.83 LF 12" Pipe (N)
 N 1,677,613.4314
 E 1,634,051.9366

731 @ Sta. 146+60.07, 116.70', Rt. Sta. 730+94.23, Waterline IX
 Install 1 - 8" 45° Bend (Restrained)(SE)
 Install 8.81 LF 8" Pipe (DCL)(Restrained)(SE)
 N 1,677,614.6045
 E 1,634,146.1600

732 @ Sta. 146+53.84, 122.93', Rt. Sta. 731+03.04, Waterline IX
 Install 1 - 8" MJ Cap, Tapped (SE)
 Install 1 - 2" Blow Off Assy. (SE)
 N 1,677,608.4558
 E 1,634,152.4638

@ Sta. 148+97.65, 22.50', Rt. = Sta. 360+00.72, Waterline I
 Install 1 - 2" Water Service Complete
 N 1,677,856.2917
 E 1,634,049.0080

599 @ Sta. 148+97.65, 38.75', Rt. = Sta. 360+06.01, 16.25', Rt., Waterline I
 Install 1 - Typical 2" Meter Setting
 Remove Exist. 2" Meter Vault
 N 1,677,851.2005
 E 1,634,065.2567

@ Sta. 149+02.95, 22.50', Rt. = Sta. 360+06.01, Waterline I
 Install 1 - 2" Water Service Complete
 N 1,677,856.2917
 E 1,634,048.9421

602 @ Sta. 149+02.95, 38.75', Rt. = Sta. 360+06.01, 16.25', Rt., Waterline I
 Install 1 - Typical 2" Meter Setting
 Remove Exist. 2" Meter Vault
 N 1,677,856.4940
 E 1,634,065.1908

9/25/2023 8:47:10 PM - c:\transystems\proj\local\transystems\proj\1a-w_1\proj\1a-w_1\proj\1a-w_1\1111.dgn