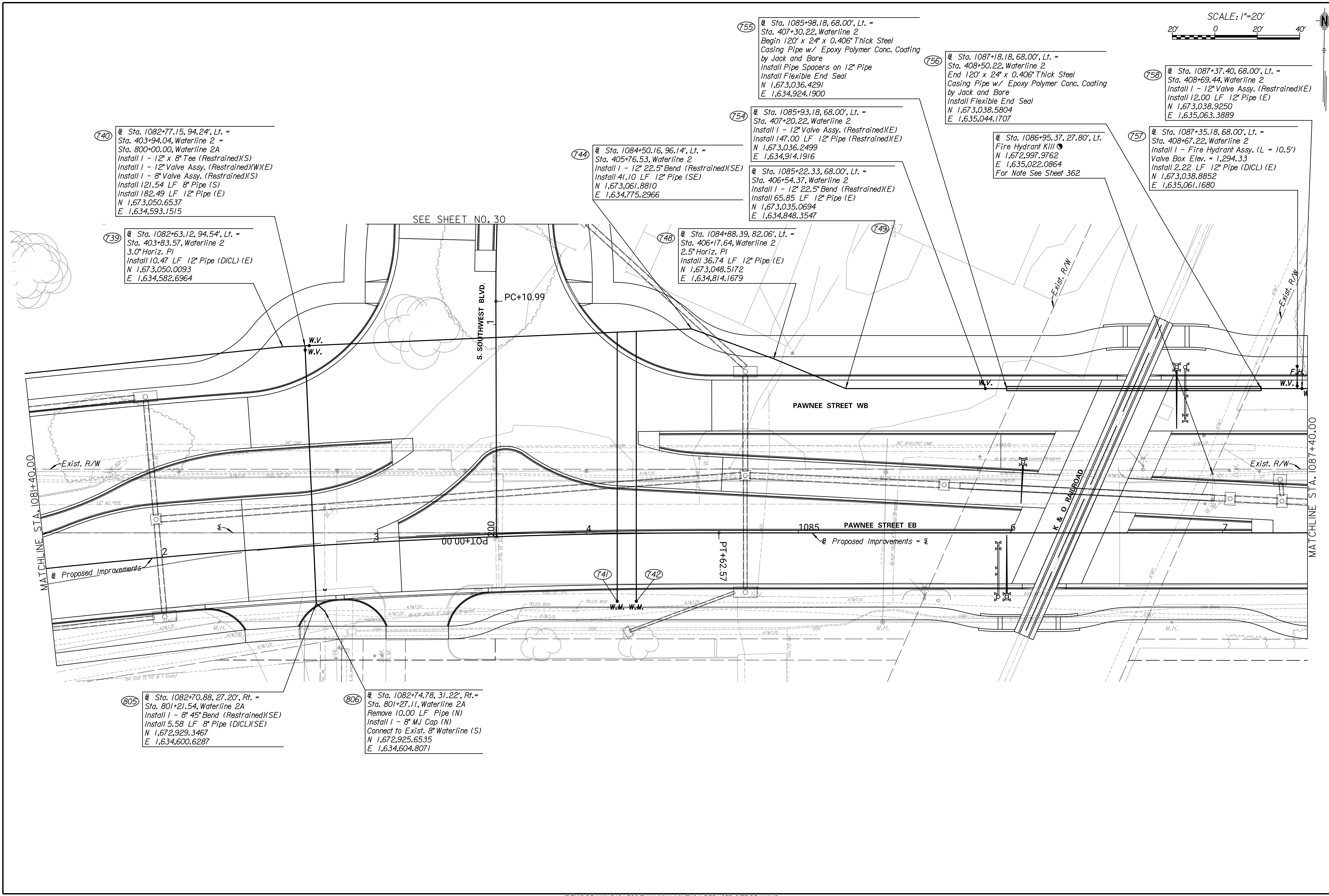


9/25/2023 8:47:57 PM - c:\transystems\proj\local\transystems\proj\la-e_konrad\0884849\C-VTR-M02-102.DGN



SCALE: 1"=20'

740 @ Sta. 1082+77.15, 94.24', Lt. =
Sta. 403+94.04, Waterline 2 =
Sta. 800+00.00, Waterline 2A
Install 1 - 12" x 8" Tee (Restrained)(S)
Install 1 - 12" Valve Assy. (Restrained)(W)(E)
Install 1 - 8" Valve Assy. (Restrained)(S)
Install 121.54 LF 8" Pipe (S)
Install 182.49 LF 12" Pipe (E)
N 1,673,050.6537
E 1,634,593.1515

739 @ Sta. 1082+63.12, 94.54', Lt. =
Sta. 403+83.57, Waterline 2
3.0" Horiz. PI
Install 10.47 LF 12" Pipe (DCL)(E)
N 1,673,050.0093
E 1,634,582.6964

744 @ Sta. 1084+50.16, 96.14', Lt. =
Sta. 405+76.53, Waterline 2
Install 1 - 12" 22.5" Bend (Restrained)(SE)
Install 41.10 LF 12" Pipe (SE)
N 1,673,061.8810
E 1,634,775.2966

748 @ Sta. 1084+88.39, 82.06', Lt. =
Sta. 406+17.64, Waterline 2
2.5" Horiz. PI
Install 36.74 LF 12" Pipe (E)
N 1,673,048.5172
E 1,634,814.1679

754 @ Sta. 1085+93.18, 68.00', Lt. =
Sta. 407+20.22, Waterline 2
Install 1 - 12" Valve Assy. (Restrained)(E)
Install 147.00 LF 12" Pipe (Restrained)(E)
N 1,673,036.2499
E 1,634,914.1916

@ Sta. 1085+22.33, 68.00', Lt. =
Sta. 406+54.37, Waterline 2
Install 1 - 12" 22.5" Bend (Restrained)(E)
Install 65.85 LF 12" Pipe (E)
N 1,673,035.0694
E 1,634,848.3547

756 @ Sta. 1087+18.18, 68.00', Lt. =
Sta. 408+50.22, Waterline 2
End 120' x 24' x 0.406" Thick Steel
Casing Pipe w/ Epoxy Polymer Conc. Coating
by Jack and Bore
Install Flexible End Seal
N 1,673,038.5804
E 1,635,044.1707

@ Sta. 1086+95.37, 27.80', Lt.
Fire Hydrant Kill
N 1,672,997.9762
E 1,635,022.0864
For Note See Sheet 362

758 @ Sta. 1087+37.40, 68.00', Lt. =
Sta. 408+69.44, Waterline 2
Install 1 - 12" Valve Assy. (Restrained)(E)
Install 12.00 LF 12" Pipe (E)
N 1,673,038.9250
E 1,635,063.3889

757 @ Sta. 1087+35.18, 68.00', Lt. =
Sta. 408+67.22, Waterline 2
Install 1 - Fire Hydrant Assy. (L = 10.5')
Valve Box Elev. = 1,294.33
Install 2.22 LF 12" Pipe (DCL)(E)
N 1,673,038.8852
E 1,635,061.1680

805 @ Sta. 1082+70.88, 27.20', Rt. =
Sta. 801+21.54, Waterline 2A
Install 1 - 8" 45" Bend (Restrained)(SE)
Install 5.58 LF 8" Pipe (DCL)(SE)
N 1,672,929.3467
E 1,634,600.6287

806 @ Sta. 1082+74.78, 31.22', Rt. =
Sta. 801+27.11, Waterline 2A
Remove 10.00 LF Pipe (N)
Install 1 - 8" MJ Cap (N)
Connect to Exist. 8" Waterline (S)
N 1,672,925.6535
E 1,634,604.8071

TRANSYSTEMS

245 N. WACO
SUITE 222
WICHITA, KANSAS 67202
MAIN: 316-303-3000
FAX: 316-462-5629

CONSULTANTS:

WEST STREET IMPROVEMENTS
FROM PAWNEE TO HARRY

WICHITA, KANSAS

REVISIONS:	MARK	DATE	DESCRIPTION

PROJ NO: 87 N-0720-01
SCALE: 1"=20'
DATE: 9/25/2023
DESIGNED BY: DAN
DRAWN BY: DAN
CHECKED BY: MDB

SHEET TITLE:

**PAWNEE ST.
WATERLINE
IMPROVEMENTS**

SHEET NO.
386

SHEET 386 OF 517