

CONSULTANTS:

WEST STREET IMPROVEMENTS  
 FROM PAWNEE TO HARRY



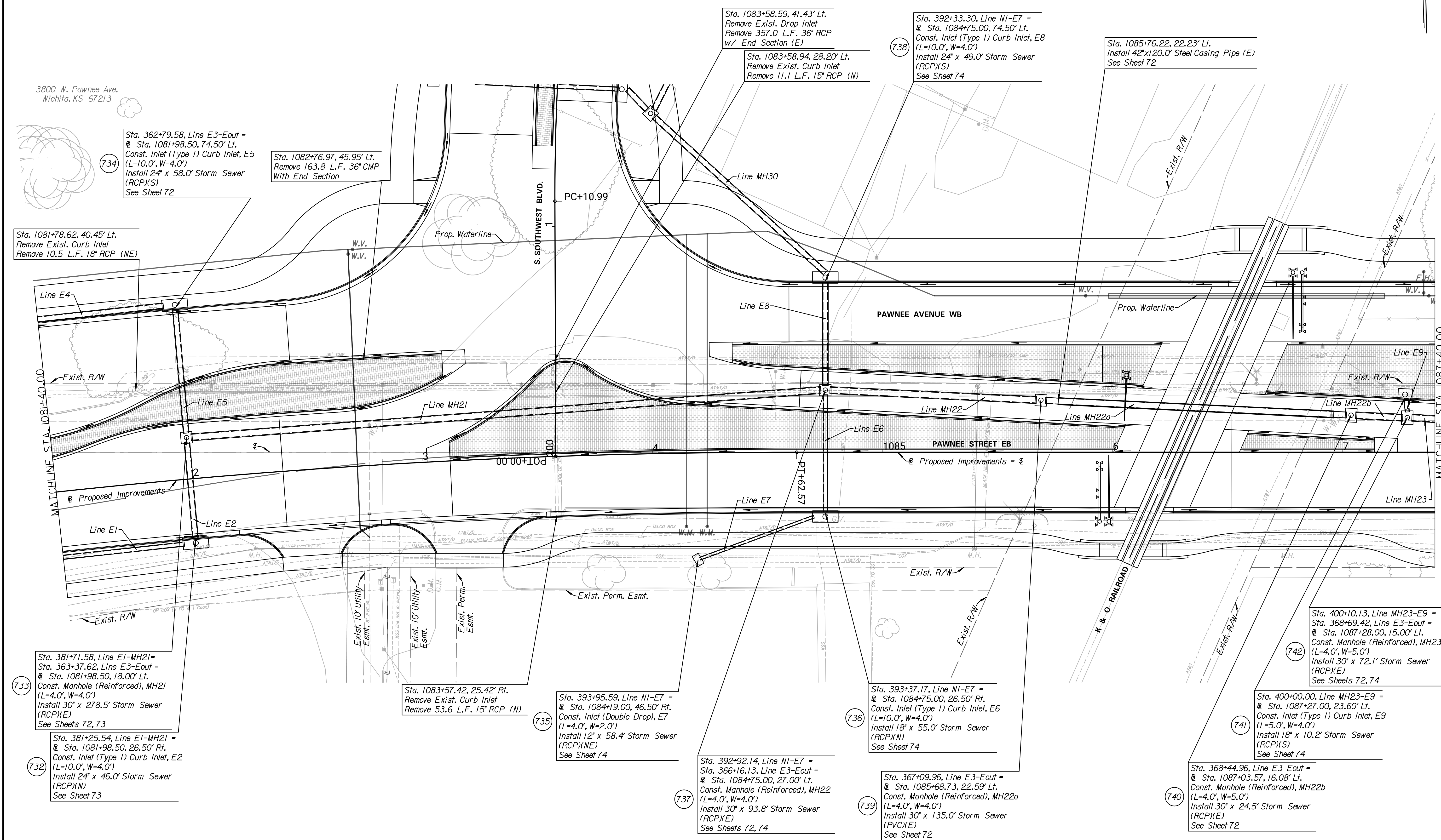
REVISIONS:	MARK	DATE	DESCRIPTION

PROJ NO: 87 N-0720-01  
 SCALE: 1"=20'  
 DATE: 9/25/2023  
 DESIGNED BY: MLC  
 DRAWN BY: LCV  
 CHECKED BY: MDB

SHEET TITLE:  
**PAWNEE AVE.  
 STORM SEWER  
 IMPROVEMENTS**

SHEET NO.  
**54**  
 SHEET 54 OF 517

3800 W. Pawnee Ave.  
 Wichita, KS 67213



734  
 Sta. 362+79.58, Line E3-Eout =  
 @ Sta. 1081+98.50, 74.50' Lt.  
 Const. Inlet (Type I) Curb Inlet, E5  
 (L=10.0', W=4.0')  
 Install 24" x 58.0' Storm Sewer  
 (RCP)(S)  
 See Sheet 72

Sta. 1082+76.97, 45.95' Lt.  
 Remove 163.8 L.F. 36" CMP  
 With End Section

Sta. 1081+78.62, 40.45' Lt.  
 Remove Exist. Curb Inlet  
 Remove 10.5 L.F. 18" RCP (NE)

Sta. 1083+58.59, 41.43' Lt.  
 Remove Exist. Drop Inlet  
 Remove 357.0 L.F. 36" RCP  
 w/ End Section (E)

Sta. 1083+58.94, 28.20' Lt.  
 Remove Exist. Curb Inlet  
 Remove 11.1 L.F. 15" RCP (N)

738  
 Sta. 392+33.30, Line NI-E7 =  
 @ Sta. 1084+75.00, 74.50' Lt.  
 Const. Inlet (Type I) Curb Inlet, E8  
 (L=10.0', W=4.0')  
 Install 24" x 49.0' Storm Sewer  
 (RCP)(S)  
 See Sheet 74

Sta. 1085+76.22, 22.23' Lt.  
 Install 42" x 120.0' Steel Casing Pipe (E)  
 See Sheet 72

733  
 Sta. 381+71.58, Line E1-MH21 =  
 Sta. 363+37.62, Line E3-Eout =  
 @ Sta. 1081+98.50, 18.00' Lt.  
 Const. Manhole (Reinforced), MH21  
 (L=4.0', W=4.0')  
 Install 30" x 278.5' Storm Sewer  
 (RCP)(E)  
 See Sheets 72, 73

Sta. 1083+57.42, 25.42' Rt.  
 Remove Exist. Curb Inlet  
 Remove 53.6 L.F. 15" RCP (N)

735  
 Sta. 393+95.59, Line NI-E7 =  
 @ Sta. 1084+19.00, 46.50' Rt.  
 Const. Inlet (Double Drop), E7  
 (L=4.0', W=2.0')  
 Install 12" x 58.4' Storm Sewer  
 (RCP)(NE)  
 See Sheet 74

736  
 Sta. 393+37.17, Line NI-E7 =  
 @ Sta. 1084+75.00, 26.50' Rt.  
 Const. Inlet (Type I) Curb Inlet, E6  
 (L=10.0', W=4.0')  
 Install 18" x 55.0' Storm Sewer  
 (RCP)(N)  
 See Sheet 74

742  
 Sta. 400+10.13, Line MH23-E9 =  
 Sta. 368+69.42, Line E3-Eout =  
 @ Sta. 1087+28.00, 15.00' Lt.  
 Const. Manhole (Reinforced), MH23  
 (L=4.0', W=5.0')  
 Install 30" x 72.1' Storm Sewer  
 (RCP)(E)  
 See Sheets 72, 74

741  
 Sta. 400+00.00, Line MH23-E9 =  
 @ Sta. 1087+27.00, 23.60' Lt.  
 Const. Inlet (Type I) Curb Inlet, E9  
 (L=5.0', W=4.0')  
 Install 18" x 10.2' Storm Sewer  
 (RCP)(S)  
 See Sheet 74

732  
 Sta. 381+25.54, Line E1-MH21 =  
 @ Sta. 1081+98.50, 26.50' Rt.  
 Const. Inlet (Type I) Curb Inlet, E2  
 (L=10.0', W=4.0')  
 Install 24" x 46.0' Storm Sewer  
 (RCP)(N)  
 See Sheet 73

737  
 Sta. 392+92.14, Line NI-E7 =  
 Sta. 366+16.13, Line E3-Eout =  
 @ Sta. 1084+75.00, 27.00' Lt.  
 Const. Manhole (Reinforced), MH22  
 (L=4.0', W=4.0')  
 Install 30" x 93.8' Storm Sewer  
 (RCP)(E)  
 See Sheets 72, 74

739  
 Sta. 367+09.96, Line E3-Eout =  
 @ Sta. 1085+68.73, 22.59' Lt.  
 Const. Manhole (Reinforced), MH22a  
 (L=4.0', W=4.0')  
 Install 30" x 135.0' Storm Sewer  
 (PVC)(E)  
 See Sheet 72

740  
 Sta. 368+44.96, Line E3-Eout =  
 @ Sta. 1087+03.57, 16.08' Lt.  
 Const. Manhole (Reinforced), MH22b  
 (L=4.0', W=5.0')  
 Install 30" x 24.5' Storm Sewer  
 (RCP)(E)  
 See Sheet 72

9/25/2023 8:22:30 PM c:\transystems\paw\_bowl\transystems\paw\1a-w\_bowl\1a\084549\C-SDR-W02-103.DGN