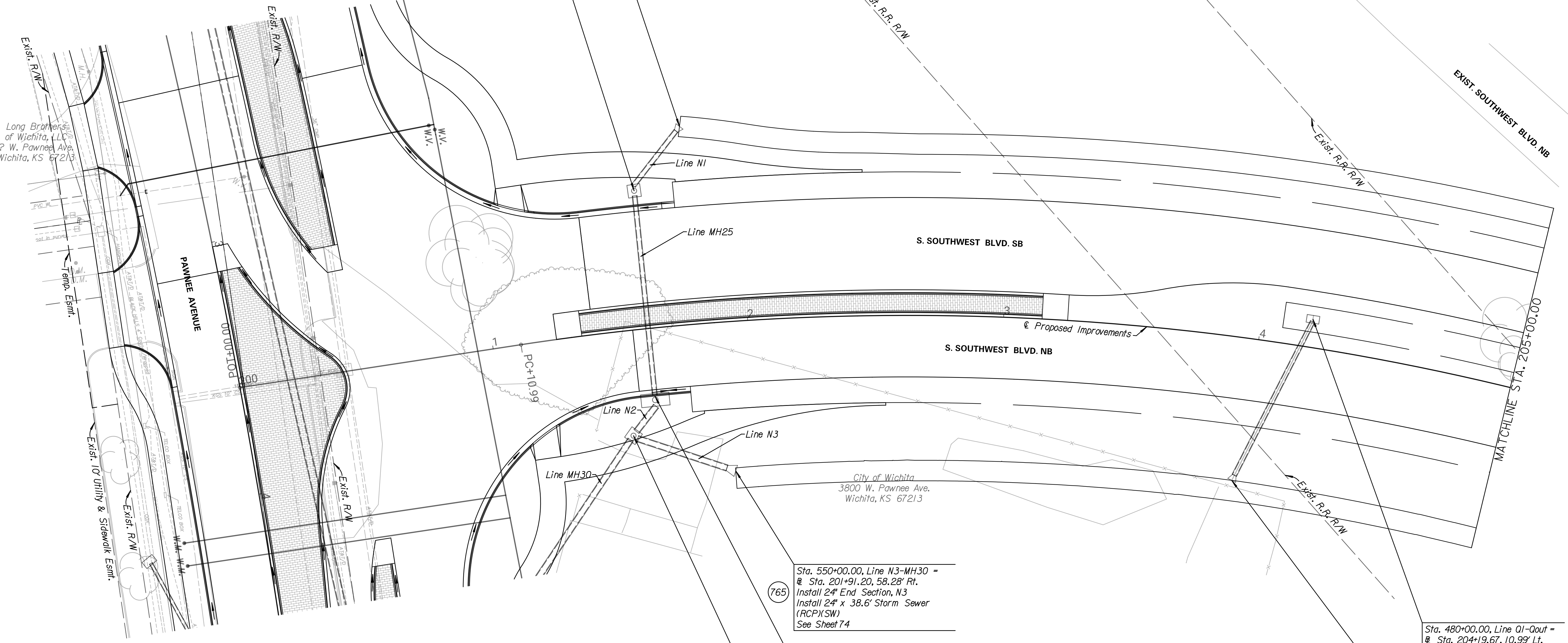


764  
 Sta. 390+00.00, Line NI-E7 =  
 @ Sta. 201+79.71, 77.40' Lt.  
 Install 18" End Section, NI  
 Install 18" x 28.5' Storm Sewer  
 (RCP)(SE)  
 See Sheet 74

763  
 Sta. 390+30.74, Line NI-E7 =  
 @ Sta. 201+61.00, 54.00' Lt.  
 Const. Manhole (Reinforced), MH25  
 (L=4.0', W=4.0')  
 Install 18" x 82.0' Storm Sewer  
 (RCP)(E)  
 See Sheet 74

City of Wichita  
 3800 W. Pawnee Ave.  
 Wichita, KS 67213



Long Brothers  
 of Wichita, LLC  
 2 W. Pawnee Ave.  
 Wichita, KS 67213

765  
 Sta. 550+00.00, Line N3-MH30 =  
 @ Sta. 201+91.20, 58.28' Rt.  
 Install 24" End Section, N3  
 Install 24" x 38.6' Storm Sewer  
 (RCP)(SW)  
 See Sheet 74

762  
 Sta. 391+2.78, Line NI-E7 =  
 @ Sta. 201+61.00, 26.50' Rt.  
 Const. Inlet (Type 1) Curb Inlet, N2  
 (L=10.0', W=4.0')  
 Install 24" x 16.3' Storm Sewer  
 (RCP)(SE)  
 See Sheet 74

761  
 Sta. 550+42.20, Line N3-MH30 =  
 Sta. 391.29.09, Line NI-E7 =  
 @ Sta. 201+50.70, 40.96' Rt.  
 Const. Manhole (Reinforced), MH30  
 (L=4.0', W=4.0')  
 Install 24" x 104.2' Storm Sewer  
 (RCP)(SE)  
 See Sheet 74

767  
 Sta. 480+00.00, Line Q1-Qout =  
 @ Sta. 204+19.67, 10.99' Lt.  
 Const. Inlet (Double Drop), Q1  
 (L=4.0', W=2.0')  
 Install 18" x 68.2' Storm Sewer  
 (RCP)(SE)  
 See Sheet 76

766  
 Sta. 480+70.40, Line Q1-Qout =  
 @ Sta. 203+96.92, 55.81' Rt.  
 Install 18" End Section, Qout  
 See Sheet 76

CONSULTANTS:

WEST STREET IMPROVEMENTS  
 FROM PAWNEE TO HARRY



REVISIONS:	MARK	DATE	DESCRIPTION

PROJ NO: 87 N-0720-01  
 SCALE: 1"=20'  
 DATE: 9/25/2023  
 DESIGNED BY: MLC  
 DRAWN BY: LCV  
 CHECKED BY: MDB

SHEET TITLE:  
**SOUTHWEST BLVD.  
 STORM SEWER  
 IMPROVEMENTS**

SHEET NO.  
**58**  
 SHEET 58 OF 517