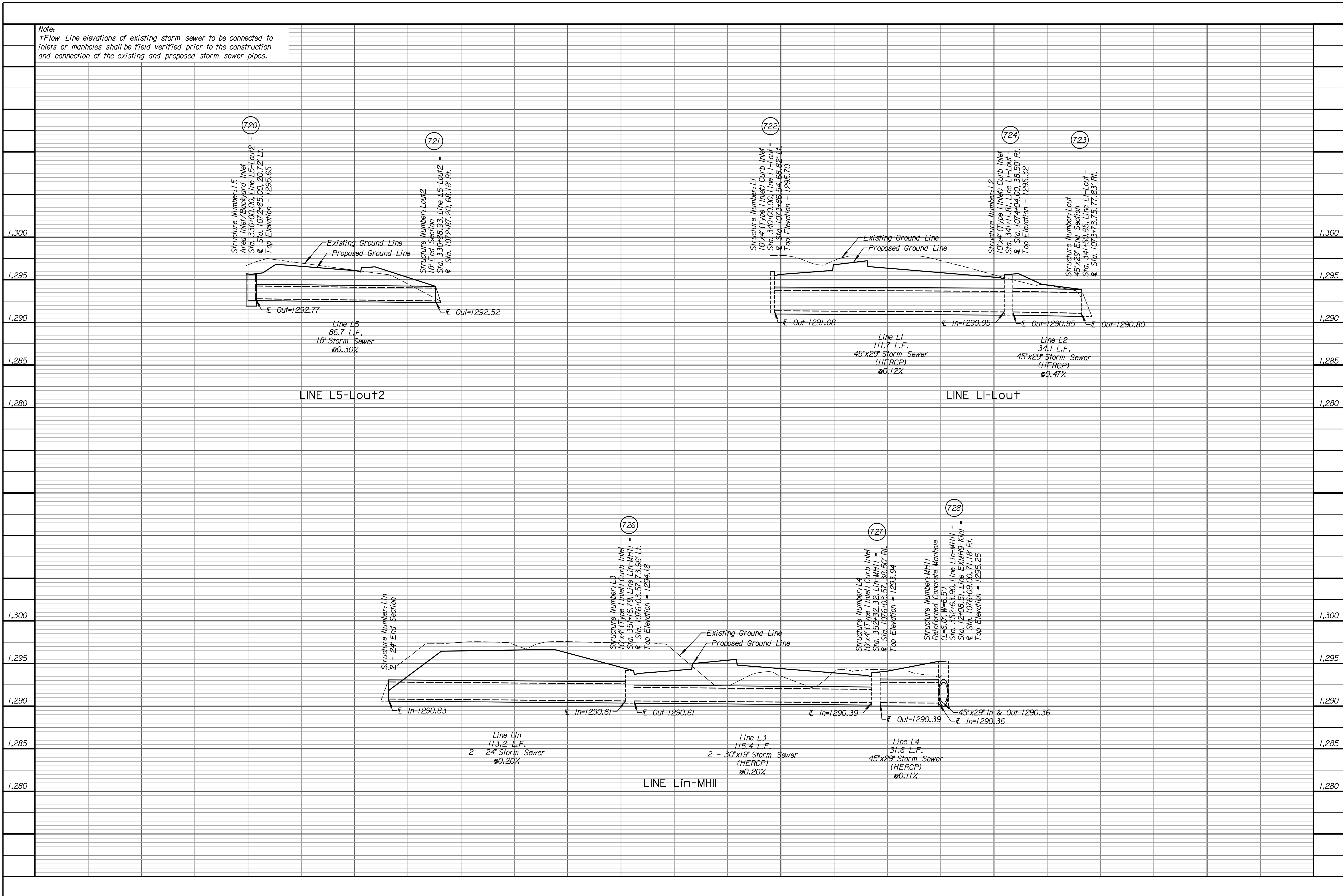


l:\projects\9252023 - 62304 PM - c:\transystems\pawnee\pawnee\pawnee\pawnee.dgn
 9/25/2023 6:23:04 PM



Note:
 *Flow Line elevations of existing storm sewer to be connected to inlets or manholes shall be field verified prior to the construction and connection of the existing and proposed storm sewer pipes.

TRANSYSTEMS

245 N. WACO
 SUITE 222
 WICHITA, KANSAS 67202
 MAIN: 316-303-3000
 FAX: 316-462-5629

CONSULTANTS:

**WEST STREET IMPROVEMENTS
 FROM PAWNEE TO HARRY**

WICHITA, KANSAS

REVISIONS:	MARK	DATE	DESCRIPTION

PROJ NO: 87 N-0720-01
 SCALE: 1"=20'
 DATE: 9/25/2023
 DESIGNED BY: MLC
 DRAWN BY: LCV
 CHECKED BY: MDB

SHEET TITLE:
**PAWNEE AVENUE
 STORM SEWER
 PROFILES**

SHEET NO.
71

SHEET 71 OF 517