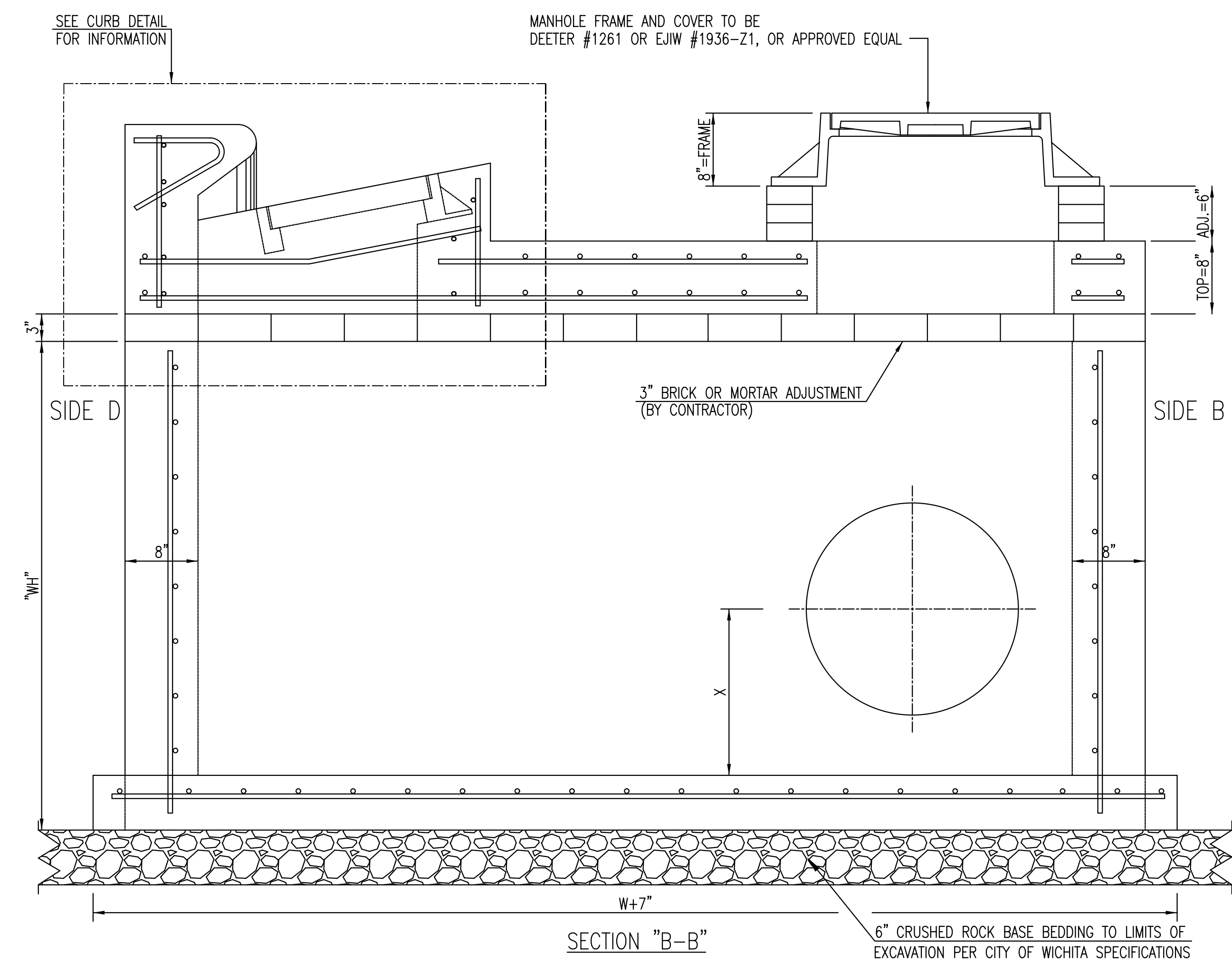
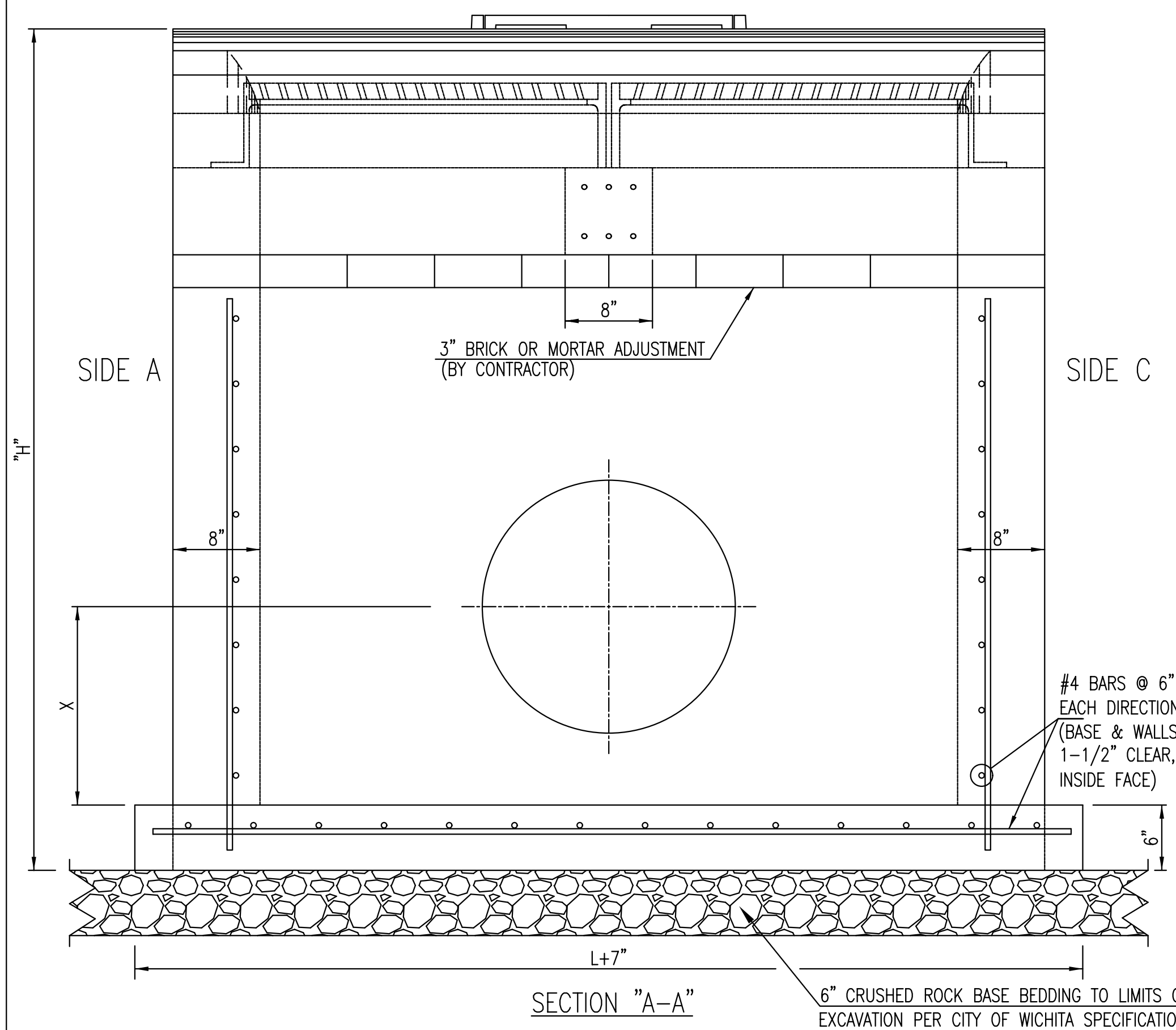
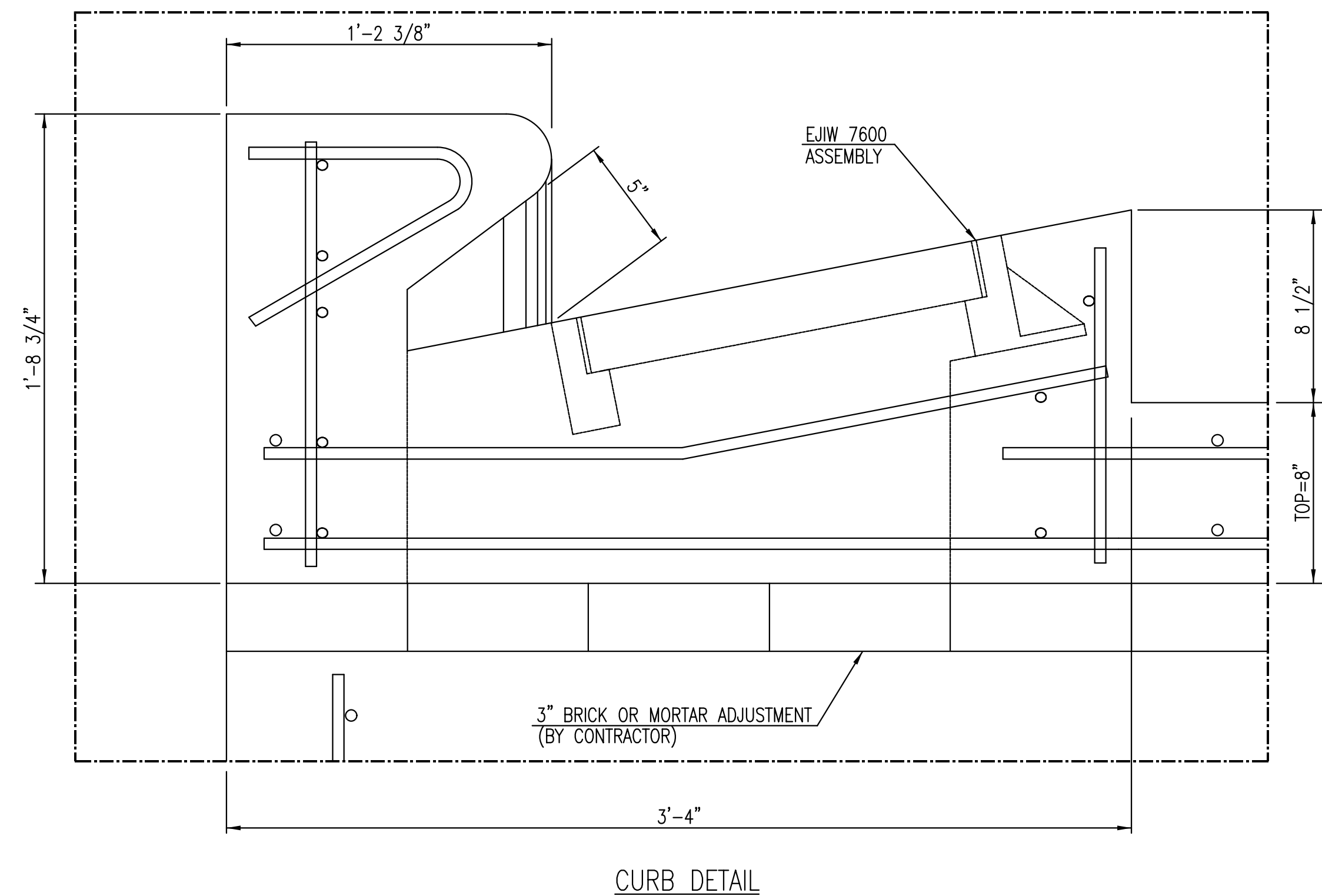
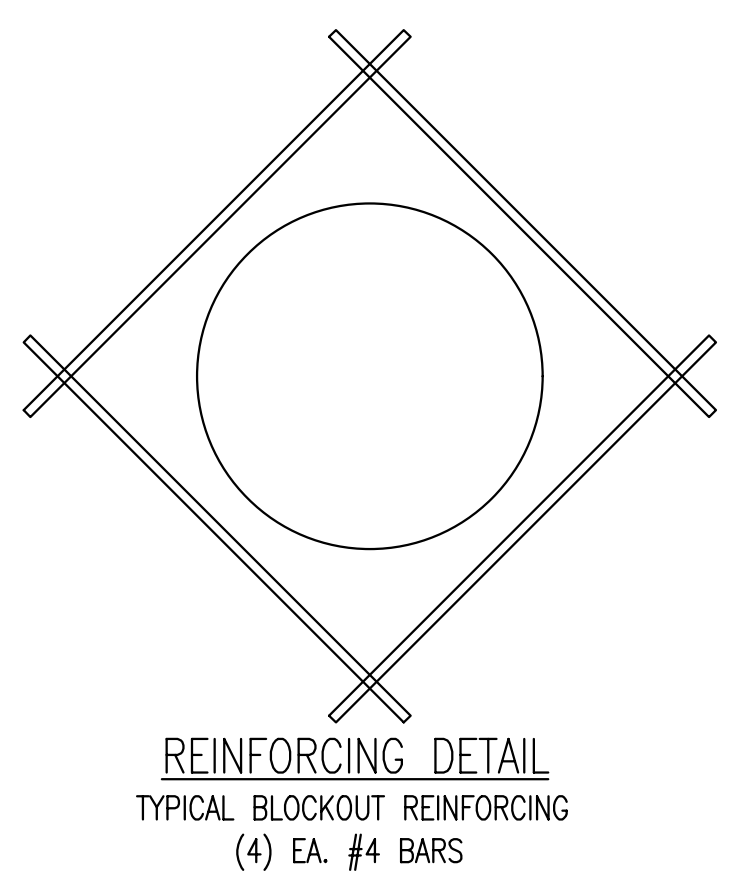


****ALL REINFORCING TO BE #4 BARS @ 6" O.C.**



- GENERAL NOTES**
- USE THE CONCRETE MIX SPECIFIED FOR THE CITY OF WICHITA CONCRETE PAVEMENT THROUGHOUT. ALL EXPOSED EDGES SHALL BE FINISHED WITH AN EDGING TOOL. REINFORCING BARS SHALL BE BENT AROUND PIPE.
 - INLET/MANHOLE INVERT SHALL BE SHAPED WITH 8 SACK MIX CONCRETE TO CREATE FLOW CHANNELS AND TO INCREASE HYDRAULIC EFFICIENCY SUCH THAT THE INLET WILL BE SELF CLEANING BETWEEN ALL INLET AND/OR OUTLET PIPES.
 - ALL BARS ARE #4 WITH 6" SPACING AND SHALL HAVE A MINIMUM CLEARANCE OF 1 1/2" INCHES UNLESS OTHERWISE NOTED ON THE PLANS.
 - NO DEDUCTIONS WILL BE MADE IN PAY LENGTH OF CURB, GUTTER, OR CURB AND GUTTER THROUGH THE INLET AREA.
 - USE DEETER FOUNDRY, INC. CASTING NO. 2442/43 OR EJIW 7600Z LEFT SIDE, 7600 RIGHT SIDE IN INLET FRAME AND GRATE WITH STYLE H GRATE. INLET FRAME TO BE PROOF LOAD TESTED TO 40,000 LBS. ON UNSUPPORTED SIDE.
 - RING AND COVER SHALL BE DEETER #1261 OR EJIW #1936-Z1, OR APPROVED EQUAL, SEE SW-303.
 - REINFORCING BARS SHALL BE CUT OR BENT AROUND PIPES. NO DEDUCTION IN CONCRETE QUANTITIES SHALL BE MADE FOR PIPE OPENINGS.
 - THE VANES OF THE GRATE SHALL BE ORIENTED WITH RESPECT TO THE FLOW ARROWS SHOWN ON THE PLANS.
 - AROUND INLET/MANHOLE OPENING IN TOP SLAB USE #5 BAR @ 45° ANGLE TO OTHER BARS. LENGTH = MH OPENING + 2'-0"
 - CONTRACTOR SHALL REMOVE LIFTING HOOKS AFTER INSTALLATION. RECESSES IN INLET/MANHOLE WALL SHALL BE GROUTED FLUSH TO THE INLET/MANHOLE WALL WITH HYDRAULIC CEMENT AFTER THE INLET/MANHOLE IS IN PLACE. LIFTING HOLES THRU THE INLET/MANHOLE WALL WILL NOT BE ACCEPTED.

SW-107

<p>CITY OF WICHITA PUBLIC WORKS & UTILITIES ENGINEERING DIVISION</p>	<p>REVISD: MARCH 2015</p> <p>SPECIAL TYPE II INLET/MANHOLE</p>		
	<p>CITY ENGINEER GARY JANZEN, P.E.</p>		
	PROJECT NUMBER 87 N-0720-01	OCA NUMBER	DATE 9/25/2023
	CITY ENGINEER'S OFFICE CITY HALL - SEVENTH FLOOR 455 NORTH MAIN STREET WICHITA, KANSAS 67202-1620 (316) 268-4501		SHEET 83 OF 517