

PIPE COLLAR AT CHANGE IN ALIGNMENT
TYPE A COLLAR

General Notes:

Pipe collar shall be used to join pipes of different diameters or materials or where change in alignment or grade exceeds that allowed for ordinary joints.

All concrete shall be Concrete Grade 3.0.

All reinforcing steel shall be Grade 60 and shall have a minimum of 2" of cover.

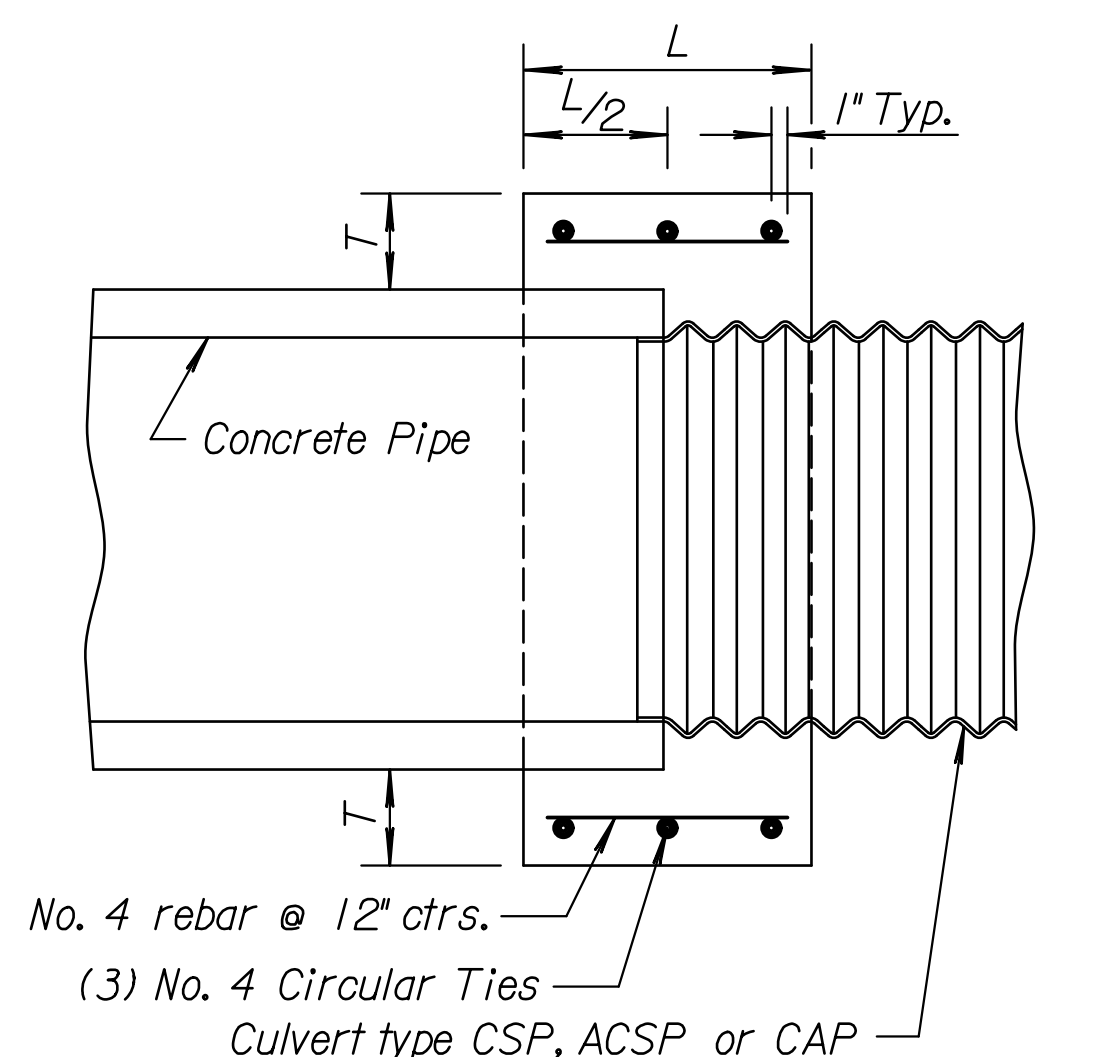
The diameter of the circular ties shall be the outside diameter of the larger pipe plus "T".

The maximum allowable distance between the ends of the pipes at any point is 2".

All labor, materials and incidentals required to construct the pipe collar Type A, B or C shall be considered **SUBSIDIARY** to the bid item, "Temporary SWS Connections".

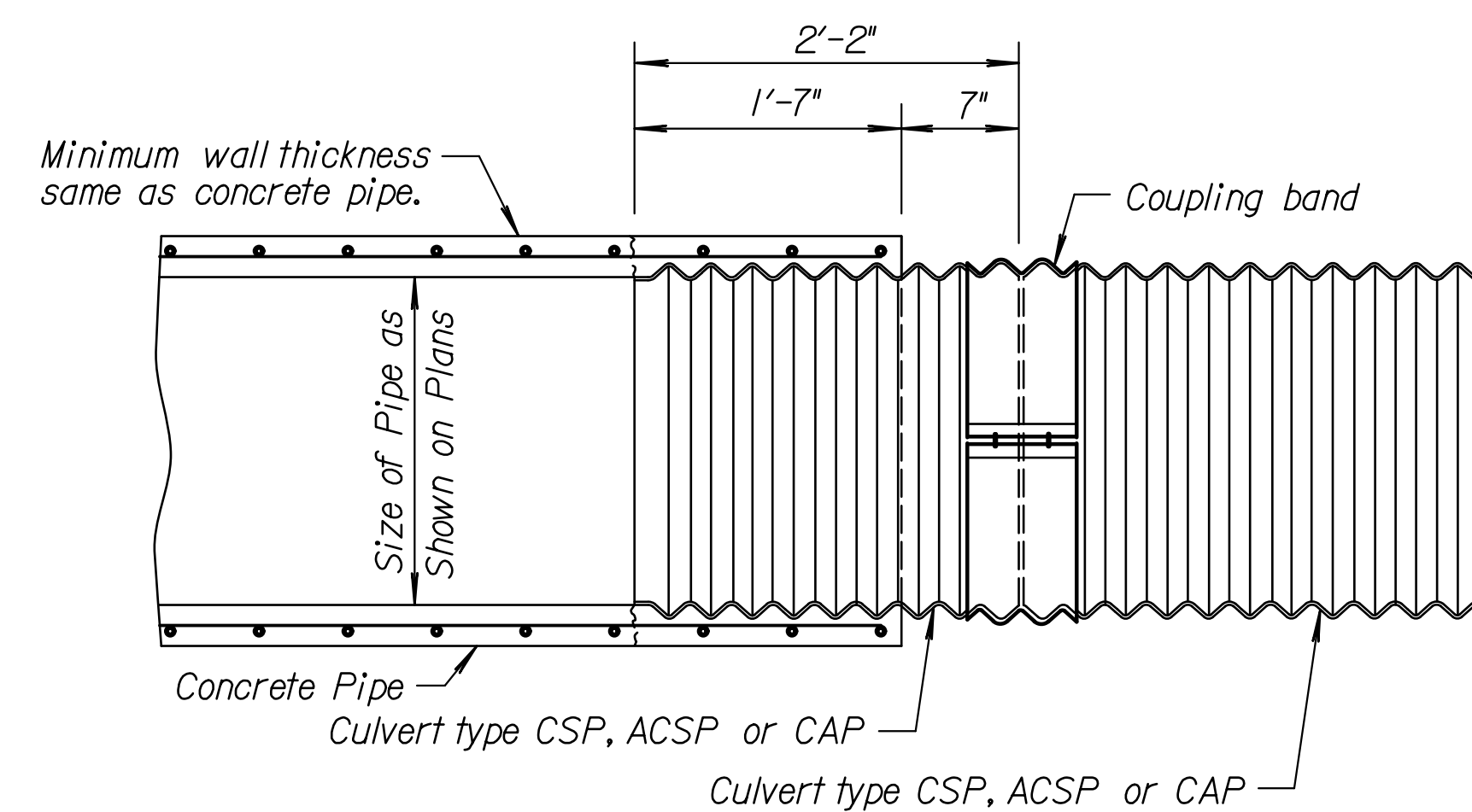
Aluminum or aluminized pipes or end sections shall be coated with an asphaltic paint when in contact with fresh concrete in accordance with the Standard Specifications.

Pipe ends shall be trimmed such that the maximum distance between pipes at any point is 2".



PIPE COLLAR AT CHANGE IN PIPE MATERIAL
TYPE B COLLAR

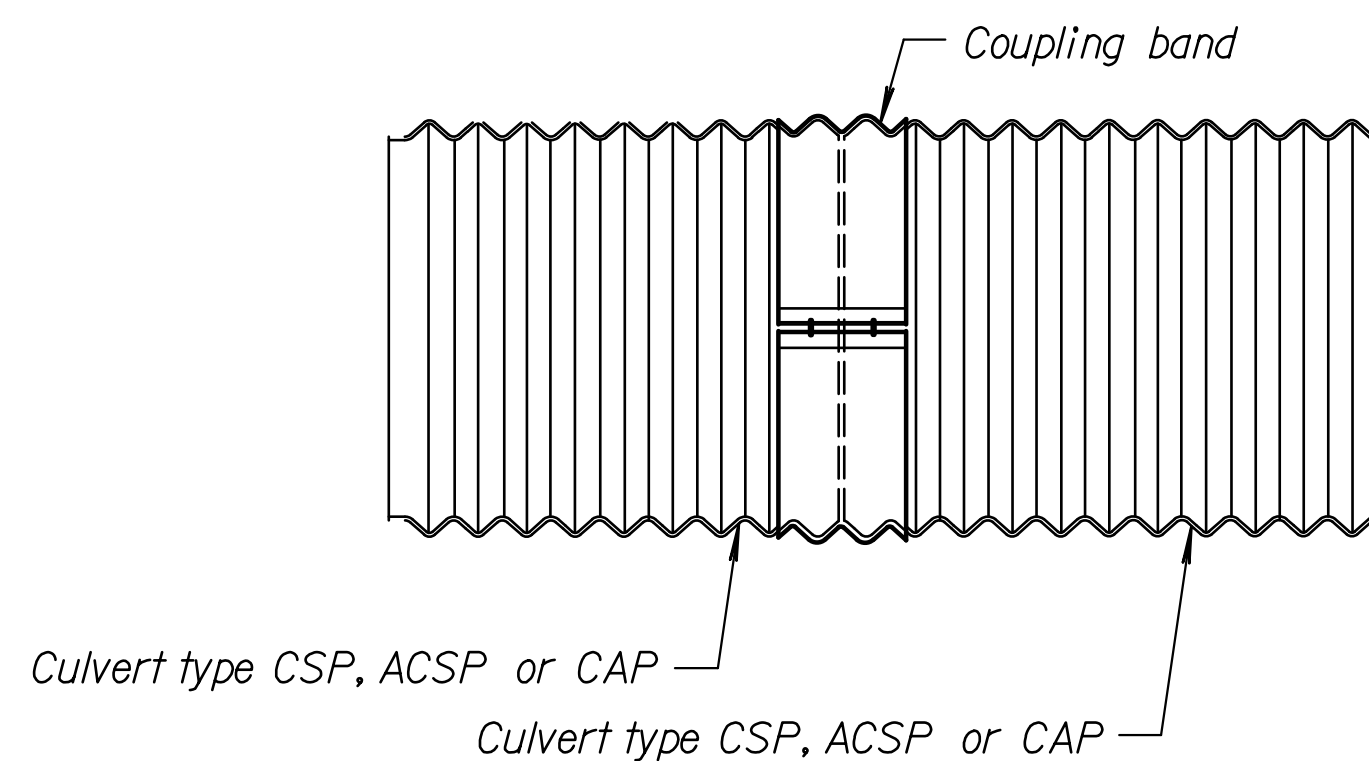
CONCRETE PIPE COLLAR		
Pipe Dia.	L	T
15"	1'-0"	6"
18"	1'-0"	6"
24"	1'-0"	6"
36"	1'-6"	8"
48"	1'-6"	10"
60"	1'-9"	11"



(CONCRETE PIPE CONNECTED TO CORRUGATED METAL PIPE)
TYPE C COLLAR ▲

▲ A section of concrete pipe (6'-0" min.) is cast 1'-7" short with the re-steel protruding. Tack weld the re-steel to the 2'-2" section of CMP and finish casting the remaining 1'-7" of RCP around the CMP. This is an approved connection provided it is fabricated as an integral part of a section of concrete pipe.

CONCRETE PIPE COLLARS



CORRUGATED PIPE
COUPLING BAND

REVISIONS:	MARK	DATE	DESCRIPTION

PROJ NO: 87 N-0720-01
SCALE: 1"=1'
DATE: 9/25/2023
DESIGNED BY: CKC
DRAWN BY: CKC
CHECKED BY: MDB

SHEET TITLE:
**COLLAR
DETAILS**

SHEET NO.
93
SHEET 93 OF 517