

# GENERAL NOTES

- THE CONTRACTOR SHALL COMPLY WITH ALL APPLICABLE SAFETY REGULATIONS. ALL CONSTRUCTION SHALL BE COMPLETED FOLLOWING CURRENT CITY STANDARD SPECIFICATIONS AND SPECIAL PROVISIONS.
- CONTRACTOR WILL BE REQUIRED TO PROVIDE NOTICE TO UTILITY COMPANIES A MINIMUM OF SEVENTY-TWO (72) HOURS PRIOR TO ANY EXCAVATION, AS FOLLOWS:

KANSAS ONE-CALL 687-2470

THE CONTRACTOR MUST NOTIFY THE FOLLOWING IN CASE OF AN EMERGENCY:

AT&T	1-800-246-8464
BLACK HILLS ENERGY (GAS)	1-800-694-8989
CITY OF WICHITA WATER & SEWER	1-316-219-8921
CITY OF WICHITA STORMWATER	1-316-268-4090
CITY OF WICHITA TRAFFIC	1-316-268-4034
CITY OF MAIZE WATER & SEWER	1-316-722-4854
COX COMMUNICATIONS	1-888-249-3530
KANSAS GAS SERVICE	1-888-482-4950
EVERGY	1-800-544-4857

- UTILITY SERVICE LINES, POLES, ETC. ARE TO BE ADJUSTED AS NECESSARY BY OTHERS PRIOR TO CONSTRUCTION UNLESS THE PLANS SPECIFICALLY CALL FOR THEIR ADJUSTMENT BY THE CONTRACTOR OR UNLESS THE PLANS SPECIFICALLY IDENTIFY A UTILITY TO BE ADJUSTED BY ITS OWNER DURING CONSTRUCTION. EXISTING UTILITIES AND THEIR LOCATION, AS SHOWN ON THE PLANS, REPRESENT THE BEST INFORMATION OBTAINABLE FOR DESIGN. THE CONTRACTOR WILL BE REQUIRED TO WORK AROUND EXISTING UTILITIES WITHIN THE RIGHT-OF-WAY WHICH DO NOT CONFLICT WITH PROPOSED CONSTRUCTION.

- RUBBLE FROM THE REMOVAL OF MISCELLANEOUS STRUCTURES AND EXCESS EXCAVATION WHICH IS TO BE WASTED SHALL BE DISPOSED OF ON SITES TO BE PROVIDED BY THE CONTRACTOR. THESE SITES SHALL BE APPROVED BY THE ENGINEER AS TO SUITABILITY, APPEARANCE AND SITE LOCATION. LOCATIONS, IN THE OPINION OF THE ENGINEER, THAT WILL LEAVE AN UNSIGHTLY APPEARANCE WILL NOT BE APPROVED. ALL DISPOSAL SITES MUST BE APPROVED BY THE KANSAS DEPARTMENT OF HEALTH AND ENVIRONMENT. MATERIAL EITHER STOCKPILED OR DISPOSED OF IN A FLOOD PLAIN WILL REQUIRE A KANSAS STATE BOARD OF AGRICULTURE PERMIT. ANY MATERIAL DUMPED IN WATERS OF THE UNITED STATES OR WETLANDS IS SUBJECT TO U.S. CORPS OF ENGINEERS PERMITTING REGULATIONS. ANY MATERIAL BURIED OR STOCKPILED BEYOND APPROVED CONSTRUCTION LIMITS WILL REQUIRE ADDITIONAL ARCHAEOLOGICAL INVESTIGATIONS UNLESS BURIED IN A PREVIOUSLY APPROVED BORROW LOCATION.

- TREES AND SHRUBS IN PUBLIC RIGHT-OF-WAY WHICH ARE IN DIRECT CONFLICT WITH PROPOSED NEW CONSTRUCTION SHALL BE REMOVED BY THE CONTRACTOR WITH THE CITY ENGINEER'S APPROVAL. TREES AND SHRUBS WHICH ARE NOT IN DIRECT CONFLICT WITH PROPOSED NEW CONSTRUCTION SHALL BE SAVED AND PROTECTED FROM DAMAGE.

- THE CONTRACTOR SHALL GIVE ALL PROPERTY OWNERS AND/OR TENANTS OF DEVELOPED PROPERTY ABUTTING THE CONSTRUCTION OF THIS PROJECT A MINIMUM OF TEN (10) DAYS NOTICE PRIOR TO START OF CONSTRUCTION.

- THE CONTRACTOR SHALL BE RESPONSIBLE FOR PRESERVING PROPERTY IRONS. THE CONTRACTOR WILL BE REQUIRED TO RE-ESTABLISH ANY PROPERTY IRONS WHICH ARE DAMAGED OR DESTROYED BY HIS CONSTRUCTION OPERATIONS. SUCH IRONS SHALL BE RE-ESTABLISHED BY A LICENSED LAND SURVEYOR IN ACCORDANCE WITH STATE LAWS.

- THE ENGINEERING DIVISION SHALL FIELD LOCATE WATER VALVES ONE TIME DURING CONSTRUCTION WHEN REQUESTED BY THE CONTRACTOR. IT SHALL BE THE CONTRACTOR'S RESPONSIBILITY TO PRESERVE SUCH FIELD LOCATIONS DURING THE CONSTRUCTION PROCESS. WATER VALVES, VALVE BOXES OR FIRE HYDRANTS DAMAGED DURING CONSTRUCTION SHALL BE REPAIRED BY CONTRACTOR AT HIS OWN EXPENSE. VALVE BOXES AND WATER METERS WITHIN THE PROJECT LIMITS SHALL BE ADJUSTED TO MATCH FIELD GRADES BY THE CONTRACTOR.

- IF TRAFFIC WILL BE IMPACTED BY CONSTRUCTION, A TRAFFIC CONTROL PLAN MUST BE SUBMITTED AND APPROVED BY THE CITY TRAFFIC ENGINEER AT [traffic@wichita.gov](mailto:traffic@wichita.gov) BEFORE CONSTRUCTION CAN BEGIN. THE CONTRACTOR SHALL BE RESPONSIBLE FOR ALL TRAFFIC CONTROL MEASURES TO FACILITATE CONSTRUCTION. ALL CONSTRUCTION ZONE MARKINGS AND SIGNAGE SHALL CONFORM TO THE LATEST VERSION OF THE MANUAL ON UNIFORM TRAFFIC CONTROL DEVICES (MUTCD) AS PUBLISHED BY THE US DEPT. OF TRANSPORTATION, FEDERAL HIGHWAY ADMINISTRATION. ALL COSTS ASSOCIATED WITH CONSTRUCTION MARKINGS AND SIGNAGE SHALL BE THE CONTRACTOR'S RESPONSIBILITY.

- ALL AREAS DISTURBED DURING CONSTRUCTION THAT WILL NOT BE UNDER PROPOSED PAVEMENT SHALL BE SEEDED AND MULCHED. COST SHALL BE CONSIDERED SUBSIDIARY TO PROJECT SEEDING. SEEDING TO BE: ANNUAL RYE @ 150 LBS./ACRE & SLOW RELEASE @ 150 LBS./ACRE

- CONTRACTOR SHALL LIMIT THE EXTENT OF TRENCH OPEN OVERNIGHT AND WEEKENDS TO LESS THAN 50 FEET.

- EXISTING UTILITIES AND THEIR LOCATION, AS SHOWN ON THE PLANS REPRESENT THE BEST INFORMATION OBTAINABLE FOR DESIGN. LOCATION INFORMATION HAS BEEN OBTAINED FROM THE VARIOUS COMPANIES AND IS EITHER FROM COMPANY UTILITIES DRAWINGS OR COMPANY PROVIDED FIELD LOCATIONS. THE PLAN LOCATIONS SHOWN ARE NOT GUARANTEED. ADDITIONAL EXISTING UTILITIES MAY ALSO BE ENCOUNTERED.

- A PORTION OF EXCESS EXCAVATED MATERIAL SHALL BE MOUNDED AROUND MANHOLES WHICH EXTEND MORE THAN ONE (1) FOOT ABOVE THE EXISTING GROUND. SUCH MOUND SHALL BE CONSTRUCTED WITH NEW DEVELOPMENT A SIX (6) FOOT DIAMETER FLAT TOP WITH 4 TO 1 SIDE SLOPES DOWN TO THE ORIGINAL GROUND. THE ELEVATION OF THE FLAT TOP OF THE MOUND SHALL BE 0.4 FOOT BELOW THE TOP OF THE MANHOLE.

- CONTRACTOR SHALL PROVIDE POSITIVE DRAINAGE AWAY FROM ALL MANHOLE COVERS.

- ALL STUBS AND PLUGGED PIPES SHALL BE LOCATED WITH GREEN PLASTIC TAPE IN THE SAME MANNER AS RISERS.

- CONNECTING TO EXISTING MANHOLES: PRIOR TO LAYING SEWER LINES USING EXISTING STUBS IN EXISTING MANHOLES, THE CONTRACTOR SHALL EXPOSE AND VERIFY THE ELEVATION, GRADE AND ALIGNMENT OF EXISTING STUBS AND NOTIFY THE ENGINEER OF ANY DEVIATION FROM THE PLANS. WHERE CONNECTION TO AN EXISTING MANHOLE THAT DOES NOT HAVE AN EXISTING STUB OR THE STUB IS UNUSABLE DUE TO ELEVATION GRADE OR ALIGNMENT, THE CONTRACTOR SHALL BORE CUT INTO EXISTING MANHOLE WALL TO MAKE CONNECTION USING APPROVED WATER STOP GASKET, AND RESHAPE THE EXISTING MANHOLE INVERT TO PROVIDE SMOOTH FLOW. THE COST TO CONNECTING TO EXISTING MANHOLES IS INCIDENTAL TO THE PROJECT.

- THE CONTRACTOR SHALL PREVENT ANY CONSTRUCTION DEBRIS FROM ENTERING THE EXISTING SANITARY SEWER DURING CONSTRUCTION.

- THE CONTRACTOR SHALL BE RESPONSIBLE FOR MAINTAINING CONTINUOUS FLOW OF SEWAGE THROUGH CONSTRUCTION. CONTRACTOR'S PROPOSED METHOD FOR MAINTAINING SEWAGE FLOW SHALL BE SUBMITTED AND APPROVED BY THE SEWER MAINTENANCE DIVISION (316-268-4073) PRIOR TO STARTING AND BY-PASSING OF SEWAGE FLOWS.

- ALL TRAFFIC CONTROL DEVICES IN THE WORK ZONE (INCLUDING MARKINGS AND SIGNS) AND THEIR INSTALLATION AND MAINTENANCE SHALL COMPLY WITH THE LATEST EDITION OF THE MANUAL ON UNIFORM TRAFFIC CONTROL DEVICES (MUTCD). ALL TRAFFIC CONTROL DEVICES IN THE TRAVELED WAY OR CLEAR ZONE SHALL BE CRASHWORTHY (NCHRP REPORT 350 OR MASH COMPLIANT). <http://safety.ftwva.dot.gov/roadwaydept/policyguide/roadhardware/wz/>

- ALL CONSTRUCTION EQUIPMENT, INCLUDING VEHICLES, MATERIALS, AND DEBRIS, SHALL BE STORED OUTSIDE OF THE CLEAR ZONE WHERE THE CONTRACTOR SHALL PLACE APPROPRIATE SIGNS, OBJECT IDENTIFIERS, AND/OR BARRICADES IN COMPLIANCE WITH MUTCD.

- EXCEPT WHEN REQUIRED FOR SAFETY, TRAFFIC CONTROL SHALL NOT BLOCK ANY LANES OR SIDEWALKS WHEN WORK IS NOT BEING PERFORMED.

- FOLLOW THE LINK BELOW FOR DETAILS ON SPECIFIC CITY OF WICHITA STANDARD DETAILS: <http://www.wichita.gov/PWU/Pages/Regulations.aspx>

- DEVELOPER FOR THIS PROJECT IS:  
MILLER FAMILY HOMES  
907 S HYDRAULIC AVENUE  
WICHITA, KS, 67211  
CLINT MILLER  
316-269-3322

# SANITARY SEWER COLLECTOR PHASE

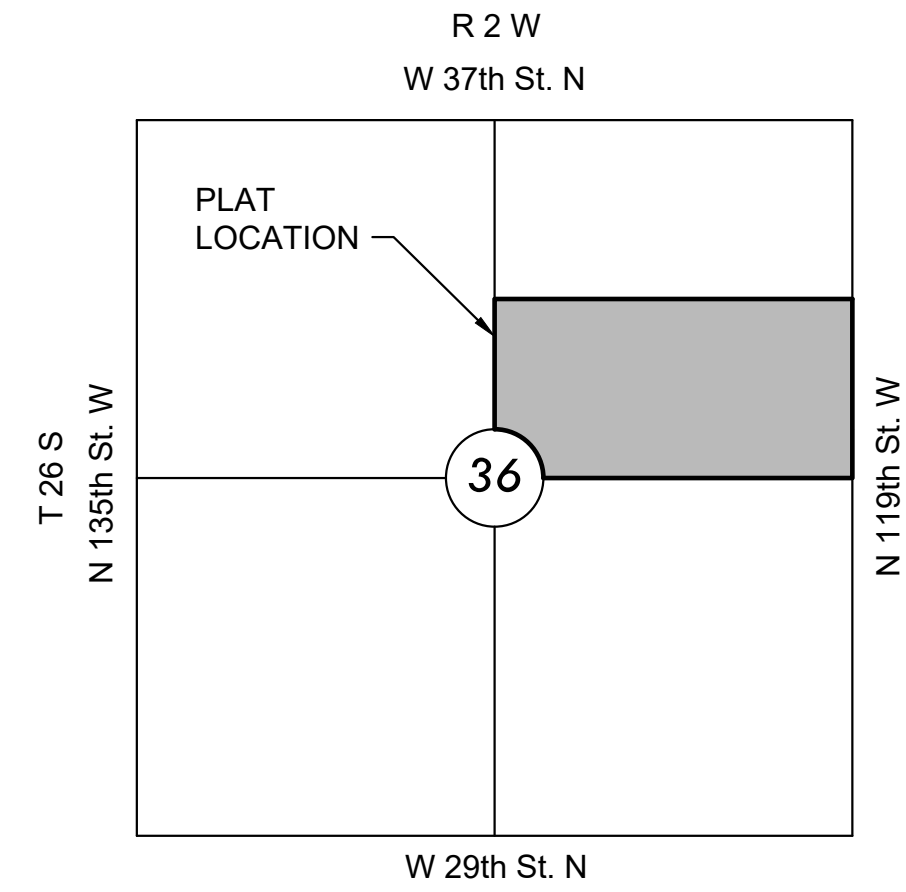
TO SERVE

# ARVADA ADDITION

PROJECT NO. 468-2022-024783  
AN ADDITION TO THE CITY OF MAIZE, SEDGWICK COUNTY, KANSAS  
ORG CODE 4726722  
MUNIS NO. E2086



**Nowak Construction - Contractor**  
**S. Lowe - City of Wichita, Field Project Engineer**  
**E. Flores - City of Wichita, Inspector**  
As-built  
Stubs  
Release Date (for connection purposes only): 8/14/2023  
Completion Date:  
pdf: apr 10/25/2022



## VICINITY MAP

No Scale

## INDEX TO DRAWINGS

SHEET NO.	DESCRIPTION
01	TITLE SHEET
02-03	SAN DETAILS
04-06	LINE 1
07	EROSION CONTROL
08	BUBBLE MAP
09-13	BMP DETAILS
14	FINAL PLAT



## BENCHMARKS

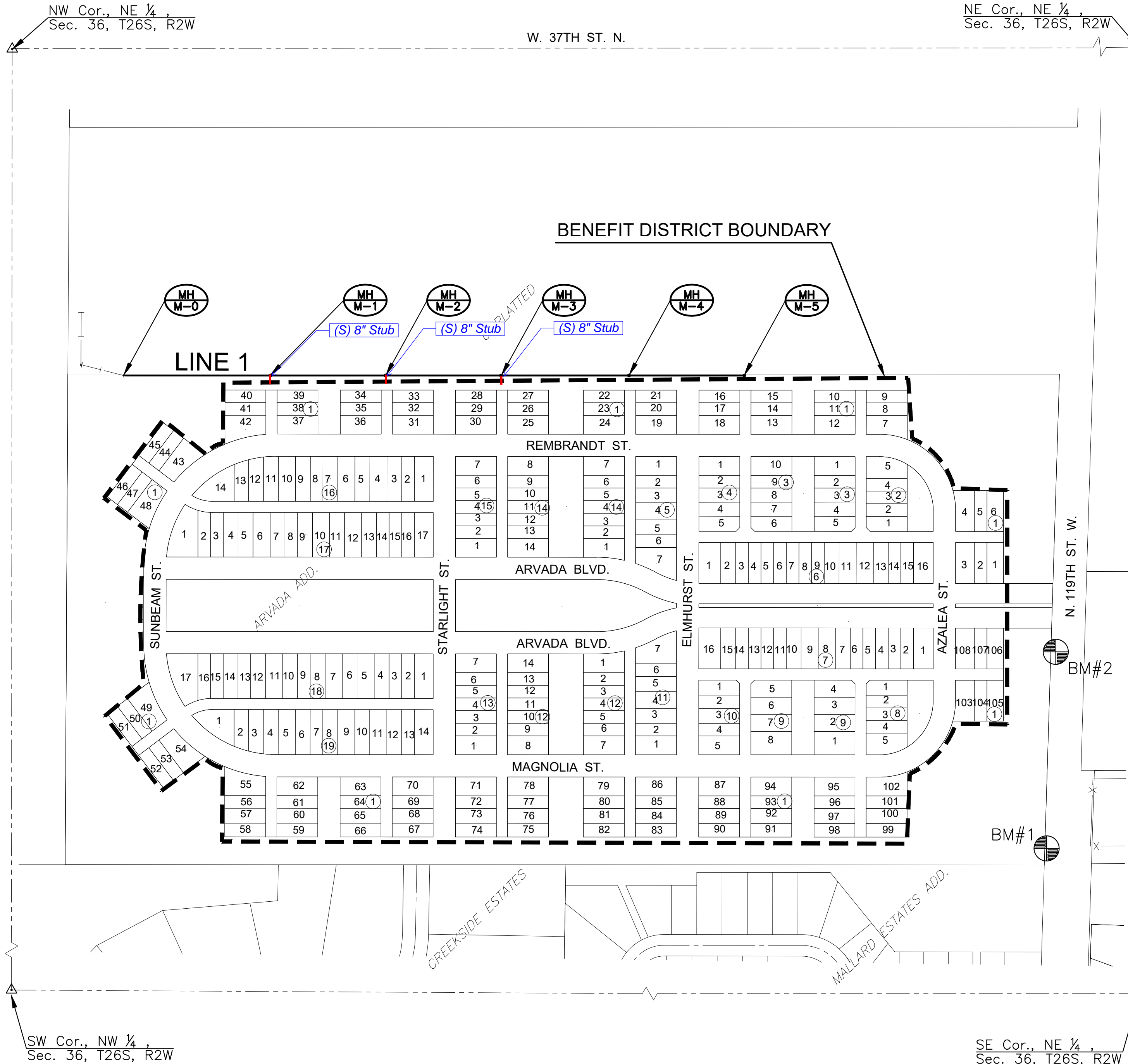
DATUM:  
THE HORIZONTAL DATUM IS BASED ON THE KANSAS COORDINATE SYSTEM OF 1983(2011), SOUTH ZONE. COORDINATES SHOWN HAVE BEEN MODIFIED TO THE GROUND USING A COMBINED ADJUSTMENT FACTOR OF 1.0001200144.

ALL ELEVATIONS SHOWN ARE BASED ON THE NAVD 88 VERTICAL DATUM.

BM#1  
N: 1706536.856 E: 1607137.975 EL: 1357.74  
MAG NAIL SET 40' S OF POWER POLE IN SE COR. OF PROPERTY, IN FOUND SQ. CUT ON S END OF A WEIR WALL. 572' 45" N & 5' E OF SE COR. OF PROPERTY.

BM#2  
N: 1707065.924 E: 1607144.837 EL: 1356.78  
MAG NAIL SET 15' W AND 5' S OF SW WING WALL OF STORM HEADWALL ON W SIDE OF 119TH S W.

NOTE:  
ALL CONTROL POINTS SHOWN HAVE ELEVATIONS ESTABLISHED BY DIFFERENTIAL LEVELING AND CAN BE USED AS TEMPORARY BENCHMARKS. WHEN USING A CONTROL POINT AS A TEMPORARY BENCHMARK, IT IS RECOMMENDED THAT CROSS-CHECKS BE MADE TO OTHER CONTROL POINTS OR BENCHMARKS TO CONFIRM ELEVATIONS PRIOR TO USE.



SANITARY SEWER PLANS FOR  
**ARVADA ADDITION**  
COLLECTOR PHASE

©2022  
MKEC Engineering  
All Rights Reserved  
[www.mkec.com](http://www.mkec.com)  
These drawings and their contents, including, but not limited to, all concepts, designs, & ideas are the exclusive property of MKEC Engineering (MKEC), and may not be used or reproduced in any way without the express consent of MKEC.

## TITLE SHEET

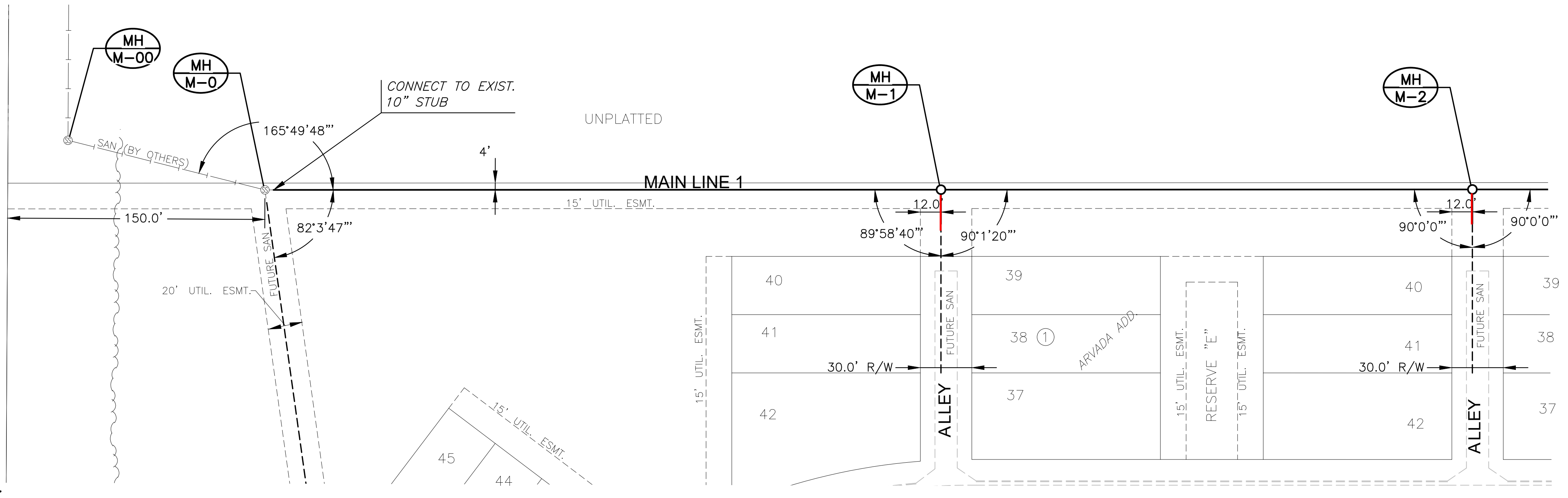
PROJECT NO.	468-2022-024783	
DATE	NOV 2022	
SCALE	1"=200'	
DESIGNED	DRAWN	CHECKED
DFL	LAL	SPE

NO.	REVISION	DATE

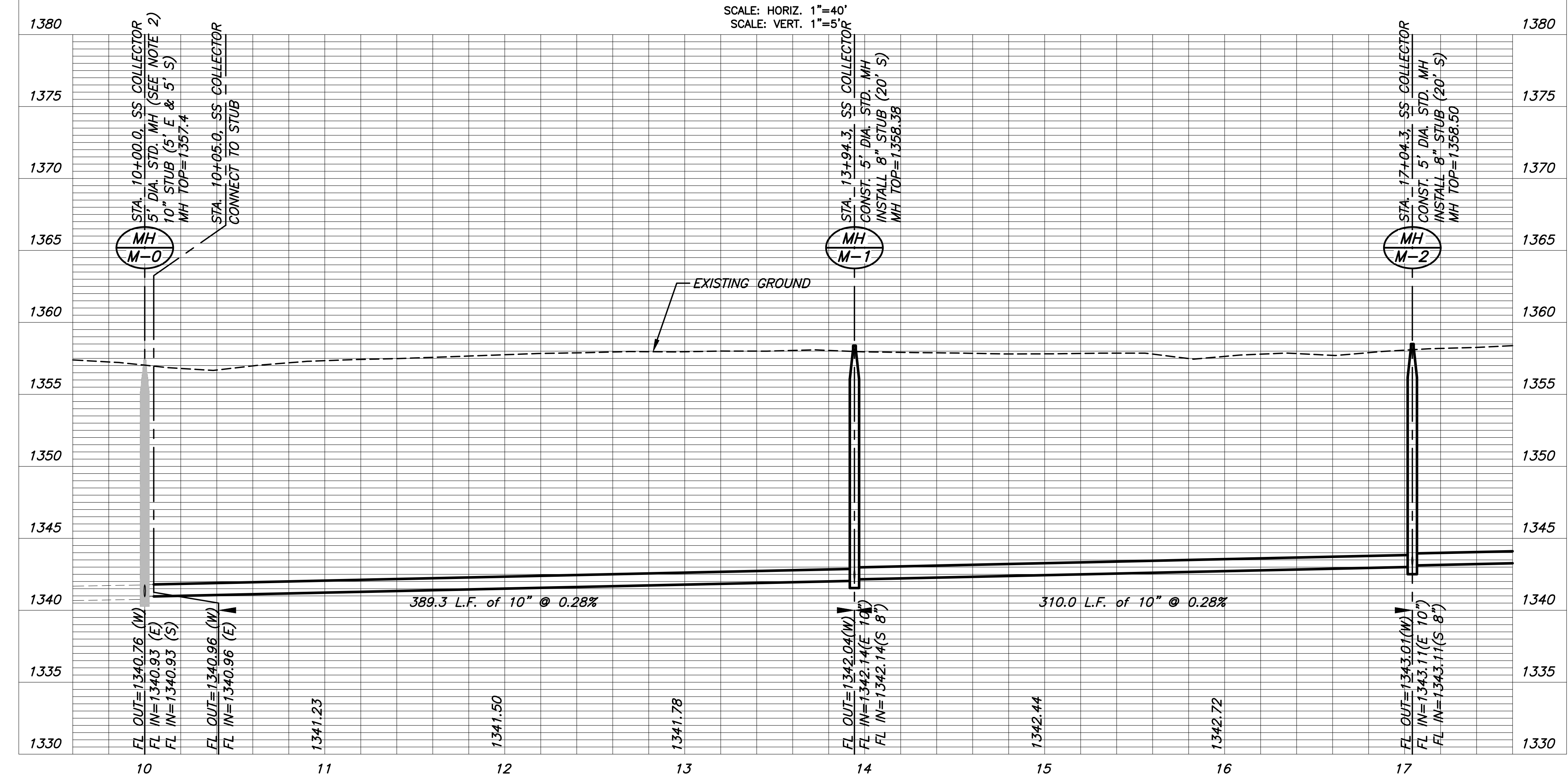
SHEET NO.

SANITARY SEWER PLANS FOR  
**ARVADA ADDITION**  
 COLLECTOR PHASE

- NOTES:**
- CONTRACTOR TO VERIFY THE DEPTH AND LOCATION OF EXISTING UTILITIES PRIOR TO CONSTRUCTION.
  - MANHOLE MH-M-00 AND MH-M-0 ARE PROPOSED MANHOLES AS PART OF THE WICHITA PLANT 3 SANITARY SEWER EXPANSION PROJECT DESIGNED BY BAUGHMAN CO. INFORMATION SHOWN ARE DESIGN ELEVATIONS.



**PLAN SS Main 1**  
**PROFILE SS Main 1**



©2022 MKEC Engineering All Rights Reserved www.mkec.com  
 These drawings and their contents, including, but not limited to, all concepts, designs, & ideas are the exclusive property of MKEC Engineering (MKEC), and may not be used or reproduced in any way without the express consent of MKEC.

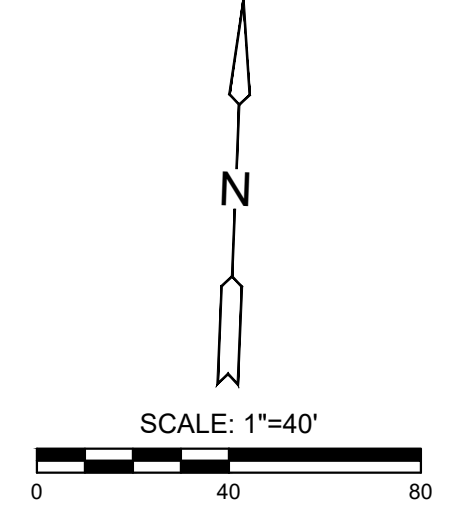
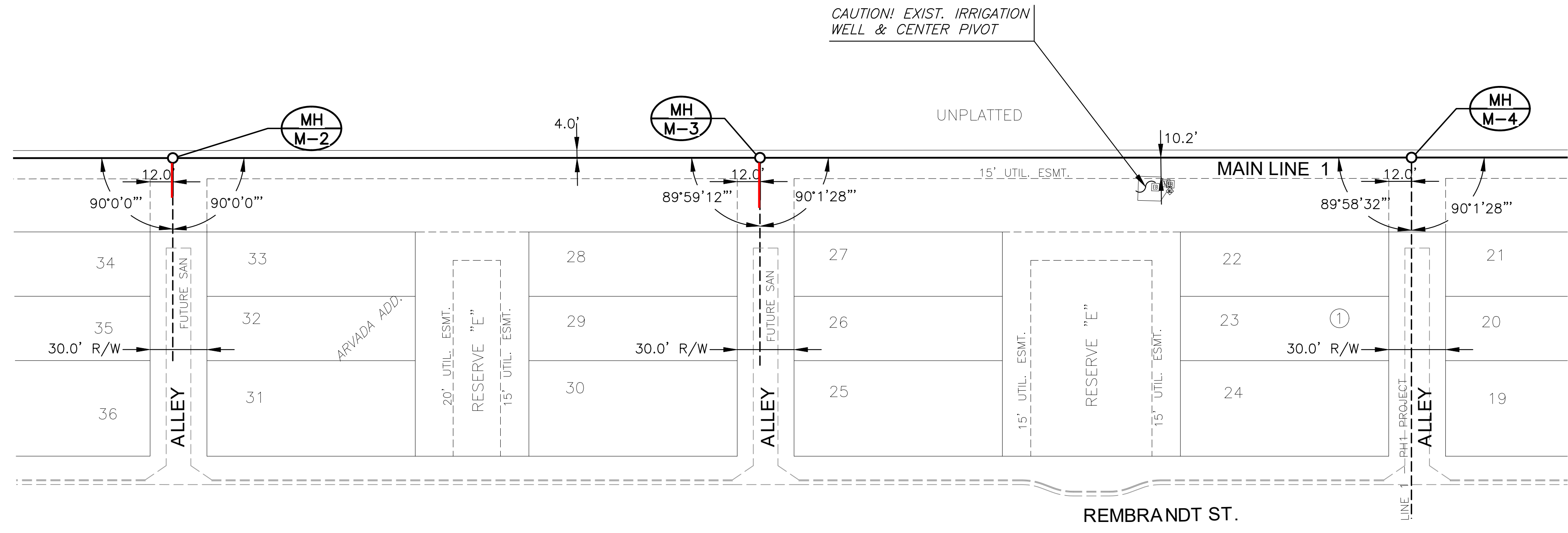
MAIN 1		
PROJECT NO.	468-2022-024783	
DATE	NOV 2022	
SCALE	1"=40'	
DESIGNED	DRAWN	CHECKED
DFL	LAL	SPE
NO.	REVISION	DATE
SHEET NO.		
04 OF 14		

PLOTTED: Friday, November 04, 2022 @ 08:45AM

J:\PROJECTS\2022\01\10708\_MPH\_119TH\HAND37TH\DEVELOPMENT SERVICES\00 02788 CAD\SH15\05 CIVIL\SAN\SAN COLLECTOR\207788-05-2291 SAN COLL.DWG

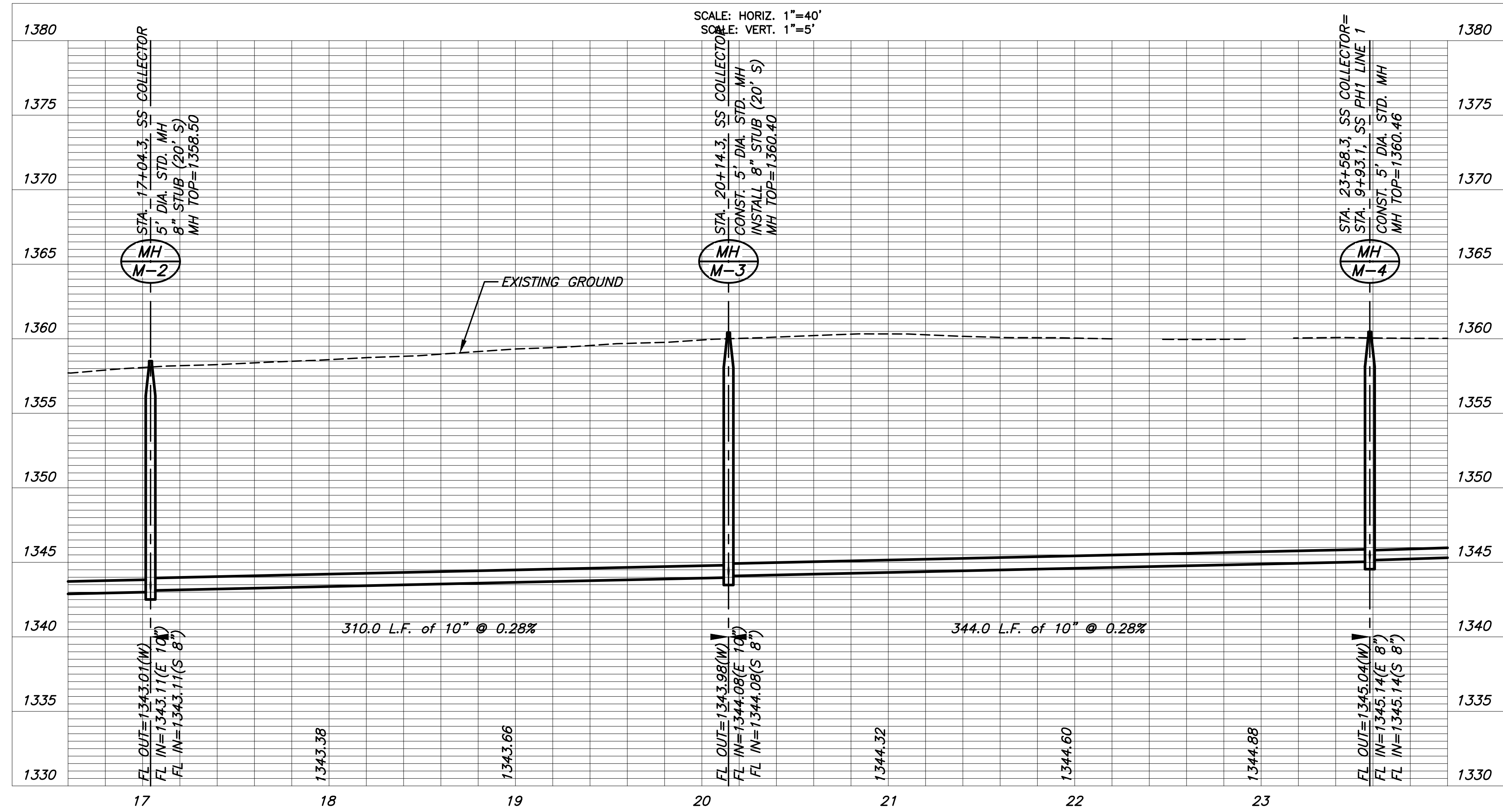


SANITARY SEWER PLANS FOR  
**ARVADA ADDITION**  
 COLLECTOR PHASE



NOTE:  
 CONTRACTOR TO VERIFY THE  
 DEPTH AND LOCATION OF EXISTING  
 UTILITIES PRIOR TO CONSTRUCTION.

PLAN SS Main 1 (Cont. 1)  
 PROFILE SS Main 1 (Cont. 1)



©2022  
 MKEC Engineering  
 All Rights Reserved  
 www.mkec.com  
 These drawings and their contents, including, but not limited to, all concepts, designs, & ideas are the exclusive property of MKEC Engineering (MKEC), and may not be used or reproduced in any way without the express consent of MKEC.

MAIN 1 (CONT. 1)

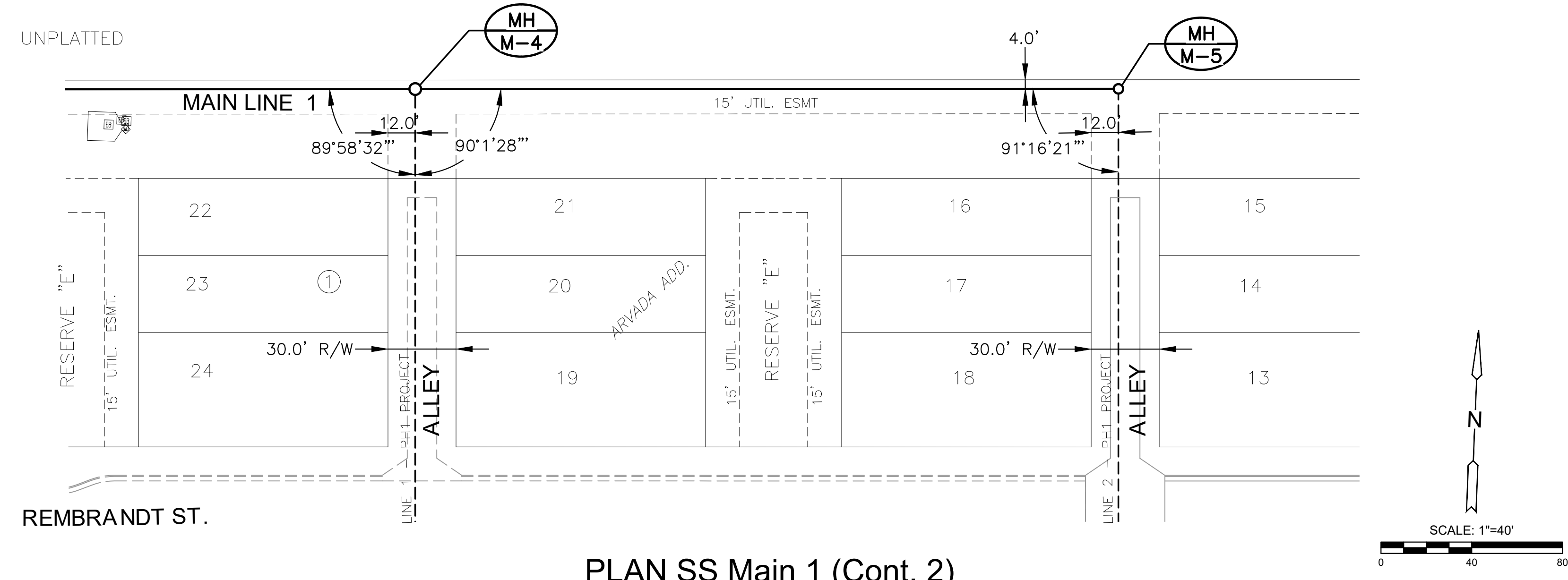
PROJECT NO.	468-2022-024783
DATE	NOV 2022
SCALE	1"=40'
DESIGNED	DFL
DRAWN	LAL
CHECKED	SPE

NO.	REVISION	DATE

PLOTTED: Friday, November 04, 2022 @ 08:45AM

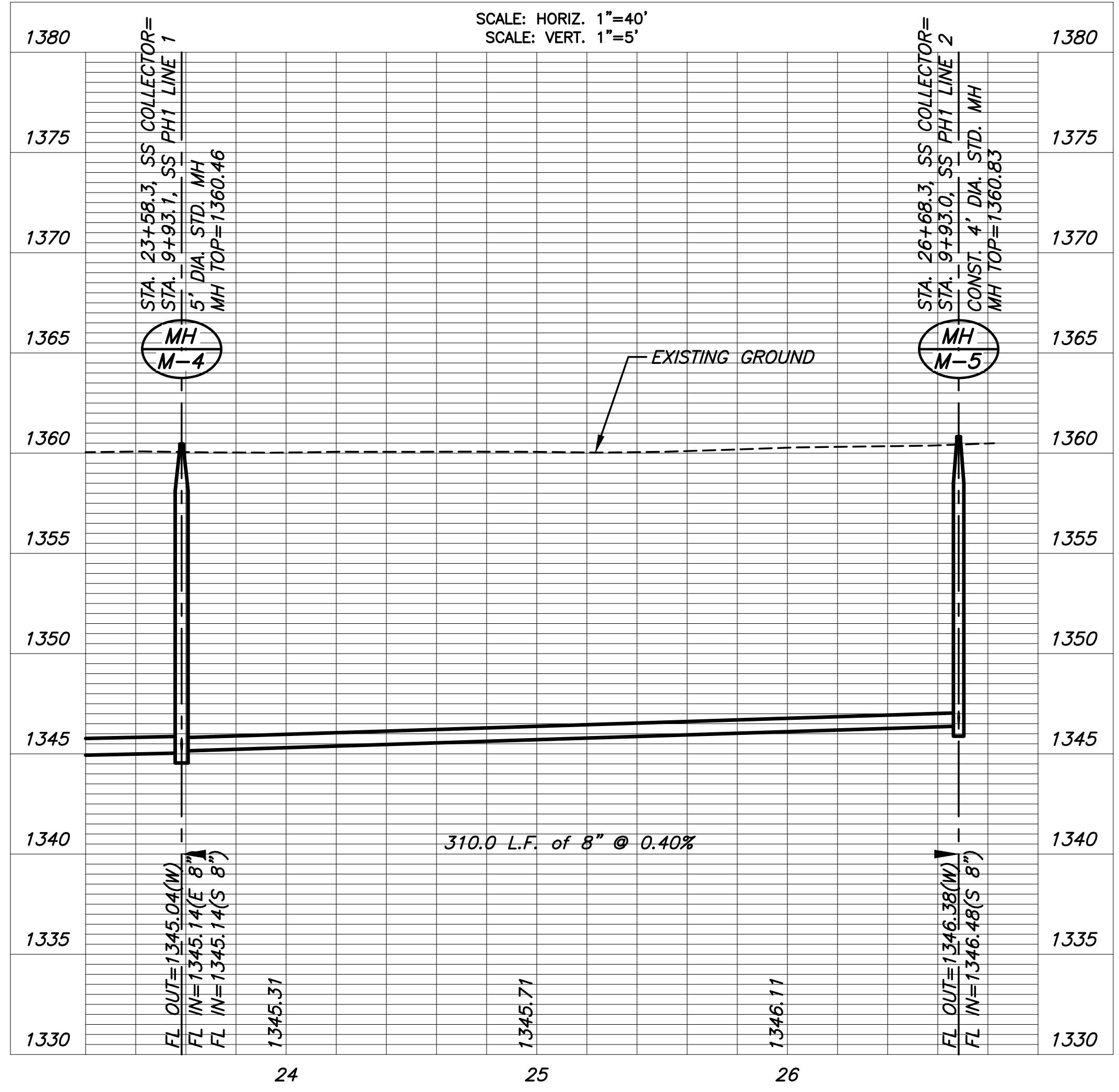
J:\PROJECTS\2020\201010708\_MPH\_119TH\HAND37TH\DEVELOPMENT\SERVICES\00 02788 CAD\SH15\05 CIVIL\SANITARY\COLLECTOR\20788-05-2202 SAN COLL.DWG

SANITARY SEWER PLANS FOR  
**ARVADA ADDITION**  
COLLECTOR PHASE



**NOTE:**  
CONTRACTOR TO VERIFY THE  
DEPTH AND LOCATION OF EXISTING  
UTILITIES PRIOR TO CONSTRUCTION.

PLAN SS Main 1 (Cont. 2)  
PROFILE SS Main 1 (Cont. 2)



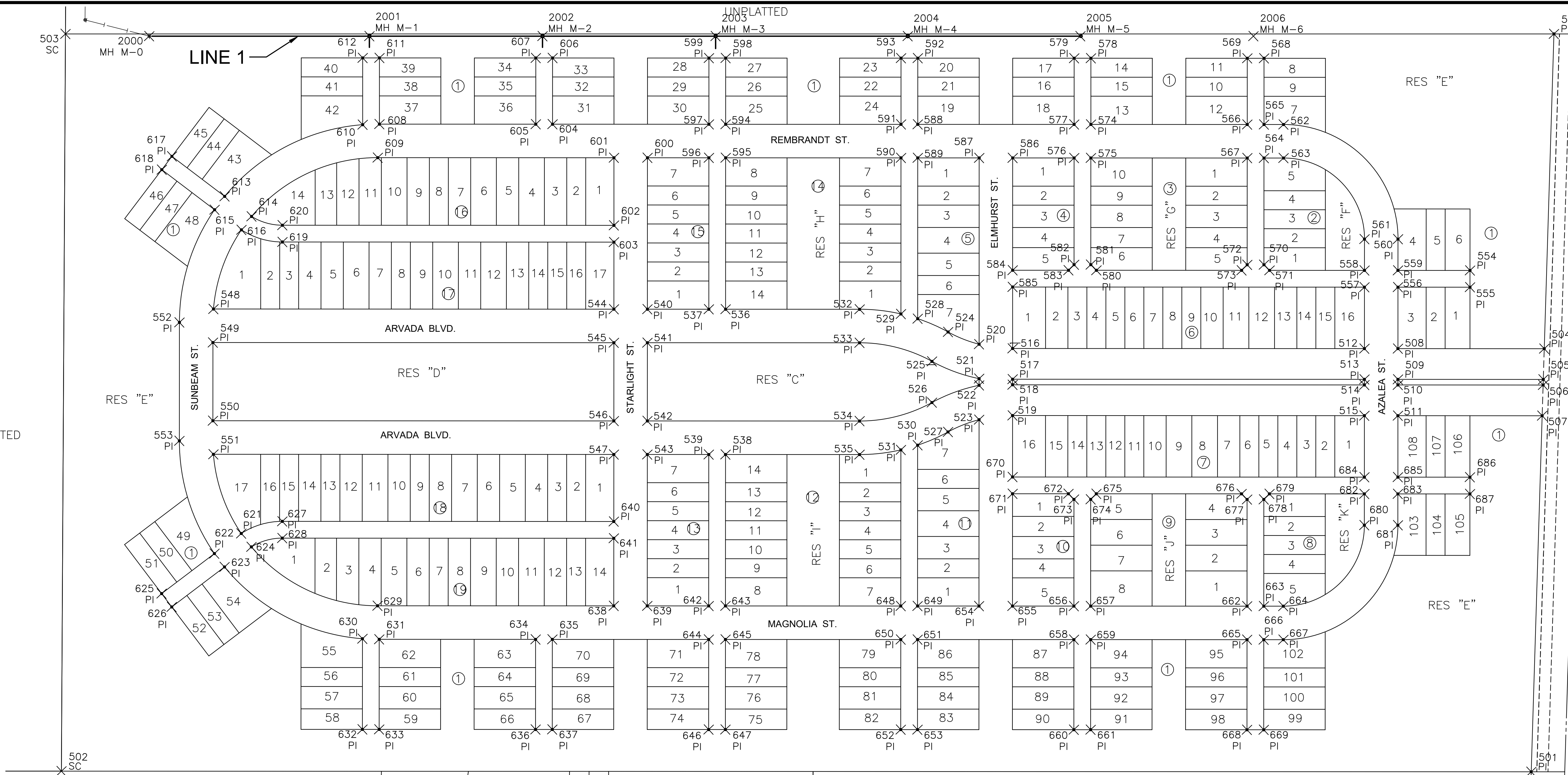
©2022  
MKEC Engineering  
All Rights Reserved  
www.mkec.com  
These drawings and their contents,  
including, but not limited to, all concepts,  
designs, & ideas are the exclusive  
property of MKEC Engineering (MKEC),  
and may not be used or reproduced in any  
way without the express consent of MKEC.

MAIN 1 (CONT. 2)

PROJECT NO.	468-2022-024783	
DATE	NOV 2022	
SCALE	1"=40'	
DESIGNED	DRAWN	CHECKED
DFL	LAL	SPE

NO.	REVISION	DATE

SANITARY SEWER PLANS FOR  
**ARVADA ADDITION**  
 COLLECTOR PHASE



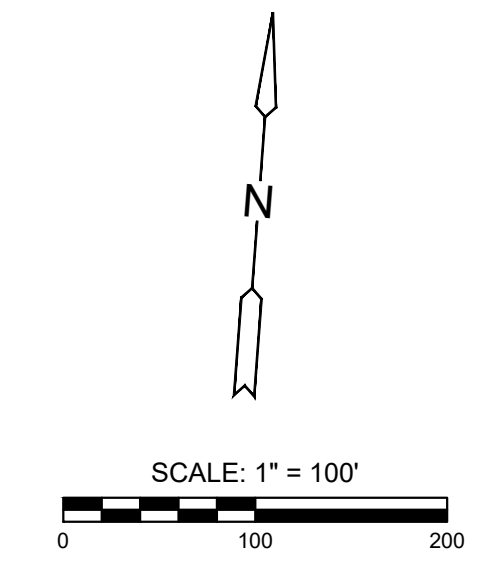
PAVING POINTS			
Point #	Northing	Easting	Desc.
500	1707812.99	1607129.21	PI
501	1706491.86	1607133.05	PI
502	1706404.27	1604502.55	SC
503	1707723.15	1604465.29	SC
504	1707249.40	1607130.84	PI
505	1707194.38	1607131.00	PI
506	1707184.37	1607131.03	PI
507	1707129.35	1607131.19	PI
508	1707240.68	1606869.00	PI
509	1707185.71	1606870.83	PI
510	1707175.72	1606871.16	PI
511	1707120.75	1606872.99	PI
512	1707238.69	1606809.03	PI
513	1707183.72	1606810.86	PI
514	1707173.72	1606811.20	PI
515	1707118.75	1606813.03	PI
516	1707217.72	1606179.38	PI
517	1707162.75	1606181.21	PI
518	1707152.76	1606181.55	PI
519	1707097.79	1606183.38	PI

PAVING POINTS			
Point #	Northing	Easting	Desc.
560	1707436.58	1606862.48	PI
561	1707434.58	1606802.51	PI
562	1707634.64	1606650.77	PI
563	1707574.67	1606652.76	PI
564	1707573.51	1606617.78	PI
565	1707633.47	1606615.79	PI
566	1707632.48	1606585.80	PI
567	1707572.51	1606587.80	PI
568	1707751.91	1606611.84	PI
569	1707750.91	1606581.86	PI
570	1707382.61	1606624.14	PI
571	1707372.95	1606634.77	PI
572	1707381.62	1606594.16	PI
573	1707371.29	1606584.50	PI
574	1707623.16	1606305.96	PI
575	1707563.19	1606307.96	PI
576	1707562.19	1606277.97	PI
577	1707622.16	1606275.98	PI
578	1707741.59	1606302.02	PI
579	1707740.59	1606272.03	PI

PAVING POINTS			
Point #	Northing	Easting	Desc.
580	1707362.64	1606324.64	PI
581	1707372.30	1606314.31	PI
582	1707371.30	1606284.33	PI
583	1707360.97	1606274.67	PI
584	1707357.64	1606174.72	PI
585	1707327.66	1606175.72	PI
586	1707558.53	1606168.03	PI
587	1707556.54	1606108.07	PI
588	1707612.84	1605996.13	PI
589	1707552.87	1605998.13	PI
590	1707551.88	1605968.14	PI
591	1707611.84	1605966.15	PI
592	1707731.28	1605992.19	PI
593	1707730.28	1605962.20	PI
594	1707601.39	1605652.32	PI
595	1707541.43	1605654.32	PI
596	1707540.43	1605624.33	PI
597	1707600.39	1605622.34	PI
598	1707719.83	1605648.38	PI
599	1707718.83	1605618.39	PI

PAVING POINTS			
Point #	Northing	Easting	Desc.
600	1707536.77	1605514.40	PI
601	1707534.77	1605454.43	PI
602	1707413.84	1605458.46	PI
603	1707383.85	1605459.45	PI
604	1707591.08	1605342.49	PI
605	1707590.08	1605312.51	PI
606	1707709.51	1605338.55	PI
607	1707708.51	1605308.57	PI
608	1707580.76	1605032.66	PI
609	1707520.69	1605031.66	PI
610	1707578.73	1605002.72	PI
611	1707699.19	1605028.72	PI
612	1707698.19	1604998.74	PI
613	1707442.25	1604760.06	PI
614	1707407.96	1604809.40	PI
615	1707417.72	1604742.79	PI
616	1707383.36	1604792.05	PI
617	1707510.63	1604663.28	PI
618	1707486.13	1604645.97	PI
619	1707364.10	1604866.16	PI

SANITARY POINTS			
Point #	Northing	Easting	Desc.
2000	1707724.21	1604615.34	MH M-0
2001	1707737.50	1605009.42	MH M-1
2002	1707747.95	1605319.25	MH M-2
2003	1707758.40	1605629.04	MH M-3
2004	1707769.99	1605972.88	MH M-4
2005	1707780.41	1606281.70	MH M-5
2006	1707790.86	1606591.51	MH M-6



©2022 MKEC Engineering All Rights Reserved www.mkec.com  
 These drawings and their contents, including, but not limited to, all concepts, designs, & ideas are the exclusive property of MKEC Engineering (MKEC), and may not be used or reproduced in any way without the express consent of MKEC.

**BUBBLE MAP**

PROJECT NO.	468-2022-024783	
DATE	NOV 2022	
SCALE	1"=100'	
DESIGNED	DRAWN	CHECKED
DFL	LAL	SPE

NO.	REVISION	DATE

SHEET NO.  
**08 OF 14**

J:\PROJECTS\2022\0201010708\_MPH\_119TH\HAND37TH DEVELOPMENT SERVICE\0278 CAD\SHS\05 CIVIL\SANITARY COLLECTOR\20786052591 SAN COLL.DWG  
 PLOTTED: Friday, November 04, 2022 9:08:40AM