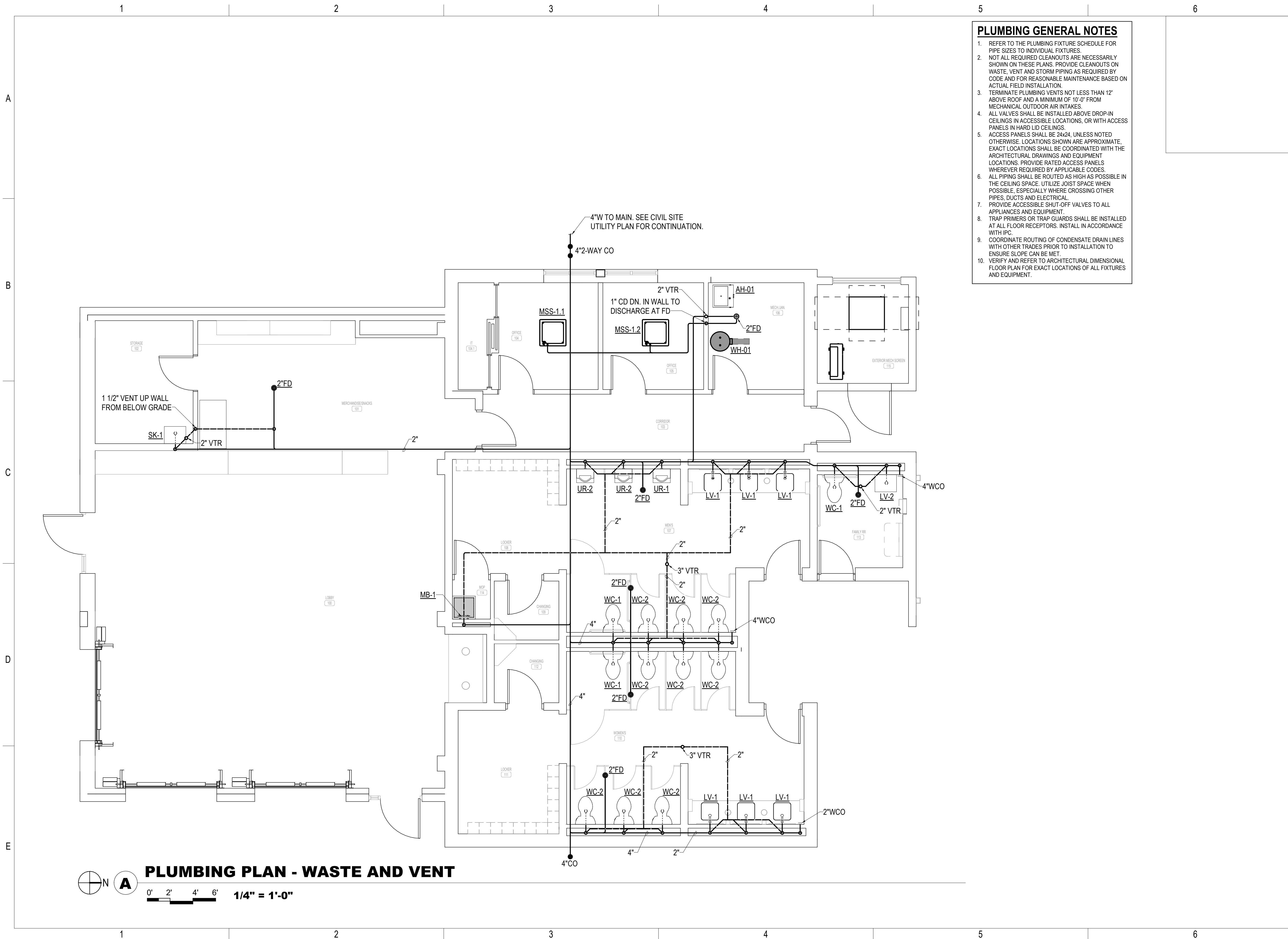
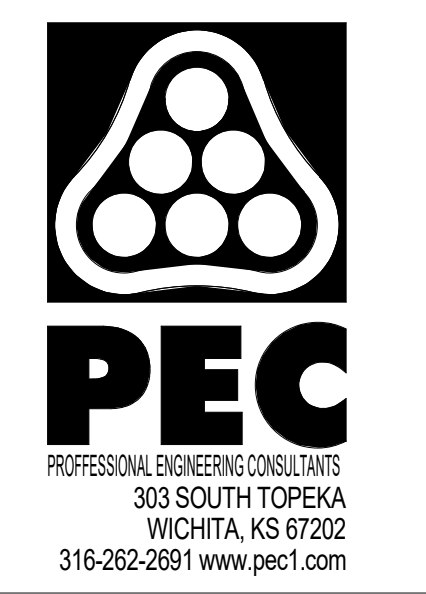


10/18/2023 2:23:04 PM
Autodesk Docs://220008-001 - South Lakes Pickleball Complex/220008-001_MECH_R22.rvt



- PLUMBING GENERAL NOTES**
1. REFER TO THE PLUMBING FIXTURE SCHEDULE FOR PIPE SIZES TO INDIVIDUAL FIXTURES.
 2. NOT ALL REQUIRED CLEANOUTS ARE NECESSARILY SHOWN ON THESE PLANS. PROVIDE CLEANOUTS ON WASTE, VENT AND STORM PIPING AS REQUIRED BY CODE AND FOR REASONABLE MAINTENANCE BASED ON ACTUAL FIELD INSTALLATION.
 3. TERMINATE PLUMBING VENTS NOT LESS THAN 12' ABOVE ROOF AND A MINIMUM OF 10'-0" FROM MECHANICAL OUTDOOR AIR INTAKES.
 4. ALL VALVES SHALL BE INSTALLED ABOVE DROP-IN CEILINGS IN ACCESSIBLE LOCATIONS, OR WITH ACCESS PANELS IN HARD LID CEILINGS.
 5. ACCESS PANELS SHALL BE 24x24, UNLESS NOTED OTHERWISE. LOCATIONS SHOWN ARE APPROXIMATE. EXACT LOCATIONS SHALL BE COORDINATED WITH THE ARCHITECTURAL DRAWINGS AND EQUIPMENT LOCATIONS. PROVIDE RATED ACCESS PANELS WHEREVER REQUIRED BY APPLICABLE CODES.
 6. ALL PIPING SHALL BE ROUTED AS HIGH AS POSSIBLE IN THE CEILING SPACE. UTILIZE JOIST SPACE WHEN POSSIBLE, ESPECIALLY WHERE CROSSING OTHER PIPES, DUCTS AND ELECTRICAL.
 7. PROVIDE ACCESSIBLE SHUT-OFF VALVES TO ALL APPLIANCES AND EQUIPMENT.
 8. TRAP PRIMERS OR TRAP GUARDS SHALL BE INSTALLED AT ALL FLOOR RECEPTORS. INSTALL IN ACCORDANCE WITH IPC.
 9. COORDINATE ROUTING OF CONDENSATE DRAIN LINES WITH OTHER TRADES PRIOR TO INSTALLATION TO ENSURE SLOPE CAN BE MET.
 10. VERIFY AND REFER TO ARCHITECTURAL DIMENSIONAL FLOOR PLAN FOR EXACT LOCATIONS OF ALL FIXTURES AND EQUIPMENT.



**SOUTH LAKES
SPORTS PARK
WICHITA, KS**

Issue:		
100% PLANS		10/18/23
JOB NO.	220008-003	
DATE	18 OCTOBER 2023	
PM	NLS	
DESIGNED BY	SMC	
DRAWN BY	JCM	
CHECKED BY	SMC	

PLUMBING PLAN

M101

PLUMBING PLAN - WASTE AND VENT