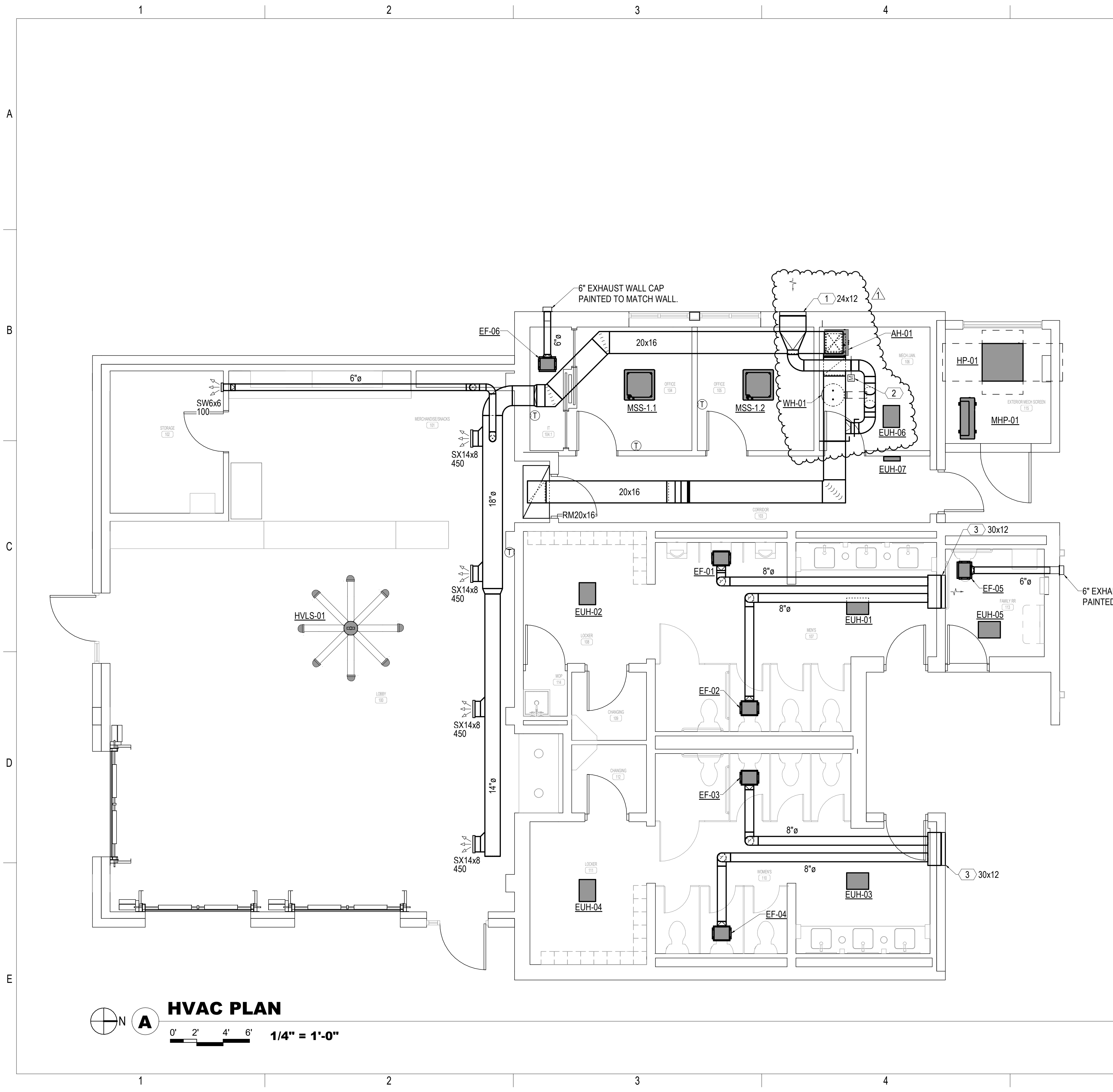


10/18/2023 2:23:07 PM
Autodesk Docs://220008-001 - South Lakes Pickleball Complex/220008-001_MECH_R22.rvt

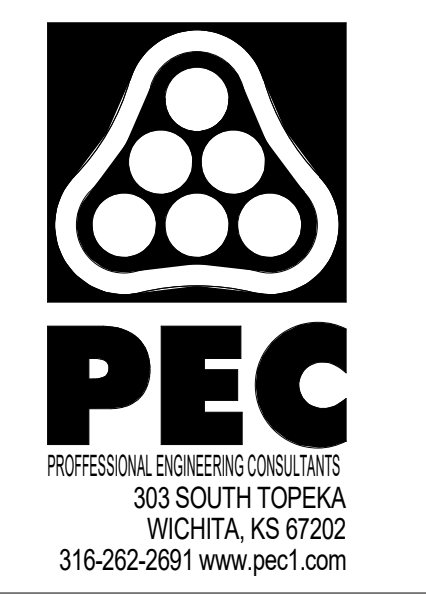


HVAC GENERAL NOTES

1. DUCT SIZES SHOWN ARE ACTUAL INSIDE CLEAR DIMENSIONS. INSULATION THICKNESS HAS NOT BEEN ACCOUNTED FOR. DUCTWORK EXPOSED TO SPACE SHALL NOT HAVE EXTERIOR INSULATION.
2. T-STATS SHALL BE LOCATED NEXT TO LIGHT SWITCH WITHIN THE ROOM SHOWN. COORDINATE WITH GC AND ELECTRICAL CONTRACTOR TO MATCH HEIGHT AND LOCATION.
3. AVOID ROUTING DUCTWORK OVER ELECTRICAL ROOMS AND ELECTRICAL PANELS. MAINTAIN N.E.C. CLEARANCES. COORDINATE ROUTING WITH ELECTRICAL CONTRACTOR.
4. ALL SUPPLY AND EXHAUST AIR BRANCHES FOR DIFFUSERS OR GRILLES SHALL HAVE MANUAL BALANCE DAMPERS. RETURN AIR BRANCHES SHALL HAVE MANUAL BALANCE DAMPERS EXCEPT IN THE CASE OF RETURN AIR PLENUM. FOR PLAN CLARITY, NOT ALL DAMPERS MAY BE SHOWN. WHERE HARD LID CEILINGS PREVENT BALANCE DAMPER ACCESS, CONFIRM WITH GRD SCHEDULE OR CONFIRM WITH ENGINEER TO USE OBD'S OR REMOTE BALANCE DAMPERS IF NOT ALREADY INDICATED.
5. ALL DUCTWORK SHALL BE ROUTED AS HIGH AS POSSIBLE WITHIN THE CEILING SPACE. UTILIZE JOIST SPACE WHERE POSSIBLE, ESPECIALLY WHEN CROSSING OTHER DUCT, PIPE, AND ELECTRICAL.
6. PROVIDE FLEXIBLE DUCT AND PIPE CONNECTIONS TO ALL MOTORIZED EQUIPMENT.
7. VERIFY ALL EQUIPMENT ACCESS PANELS WITH MANUFACTURER AND ARCHITECT. ACCESS PANELS SHALL BE 24X24 UNLESS NOTED OTHERWISE LOCATIONS SHALL BE COORDINATED WITH THE ARCHITECT AND THE LOCATIONS OF THE EQUIPMENT THEY SERVE.
8. COORDINATE FINISH OF ALL EXPOSED DUCT WITH ARCHITECT. DUCTWORK THAT IS TO BE PAINTED SHALL HAVE A PAINT GRIP FINISH ACCEPTABLE FOR PAINTING. EXPOSED SPIRAL DUCT GRILLES SHALL BE INSTALLED AT A 30 DEGREE ANGLE DOWNWARD BELOW HORIZONTAL.
9. REFER TO GRD SCHEDULE FOR DUCT CONNECTION SIZES. REFER TO TERMINAL BOX SCHEDULE FOR INLET DUCT SIZES.
11. CEILING COORDINATION OF ALL MEP SYSTEMS (LIGHTING, DUCTWORK, DIFFUSERS, ELECTRICAL, ETC.) MUST BE COMPLETED BY THE CONTRACTOR PRIOR TO THE START OF ANY NEW INSTALLATION.

SHEET KEYNOTES

- 1 OUTSIDE AIR LOUVER EQUAL TO RUSKIN ELF375DX WITH KYNAR FINISH.
- 2 MOTORIZED DAMPER WIRED TO OPEN WHEN AIR HANDLER SUPPLY FAN IS ON, AND CLOSE WHEN IT IS OFF.
- 3 EXHAUST AIR LOUVER EQUAL TO RUSKIN ELF375DX WITH KYNAR FINISH.



**SOUTH LAKES
SPORTS PARK
WICHITA, KS**

Issue:		
100% PLANS		10/18/23
JOB NO.	220008-003	
DATE	18 OCTOBER 2023	
PM	NLS	
DESIGNED BY	SMC	
DRAWN BY	JCM	
CHECKED BY	SMC	

HVAC PLAN

M201