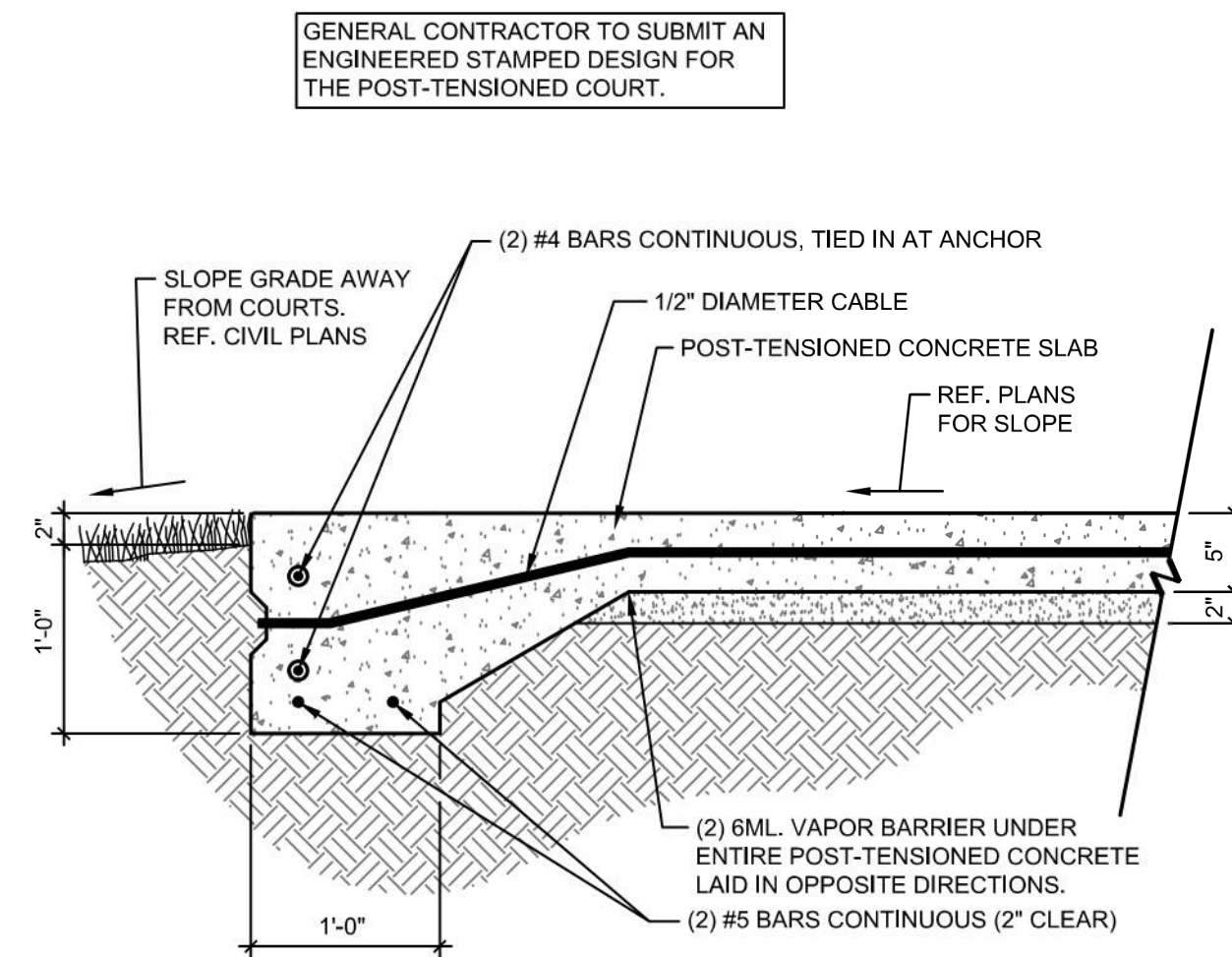
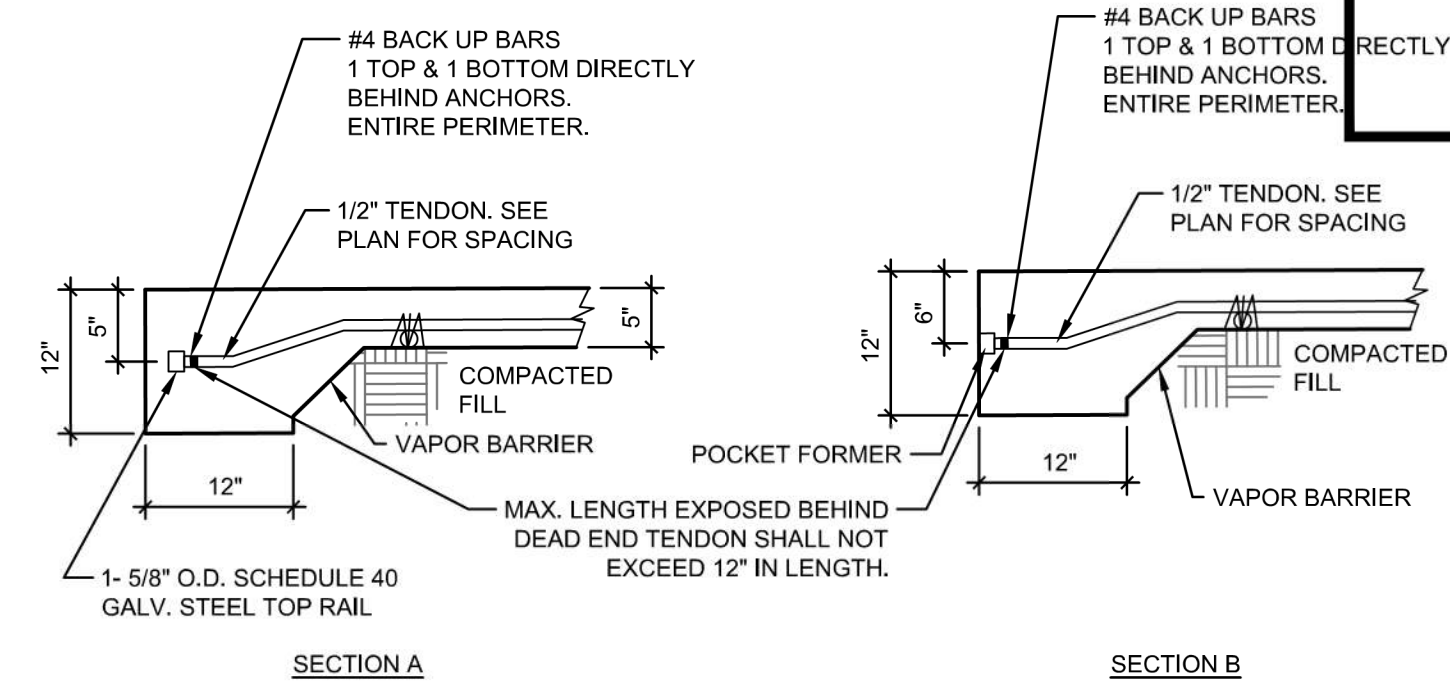


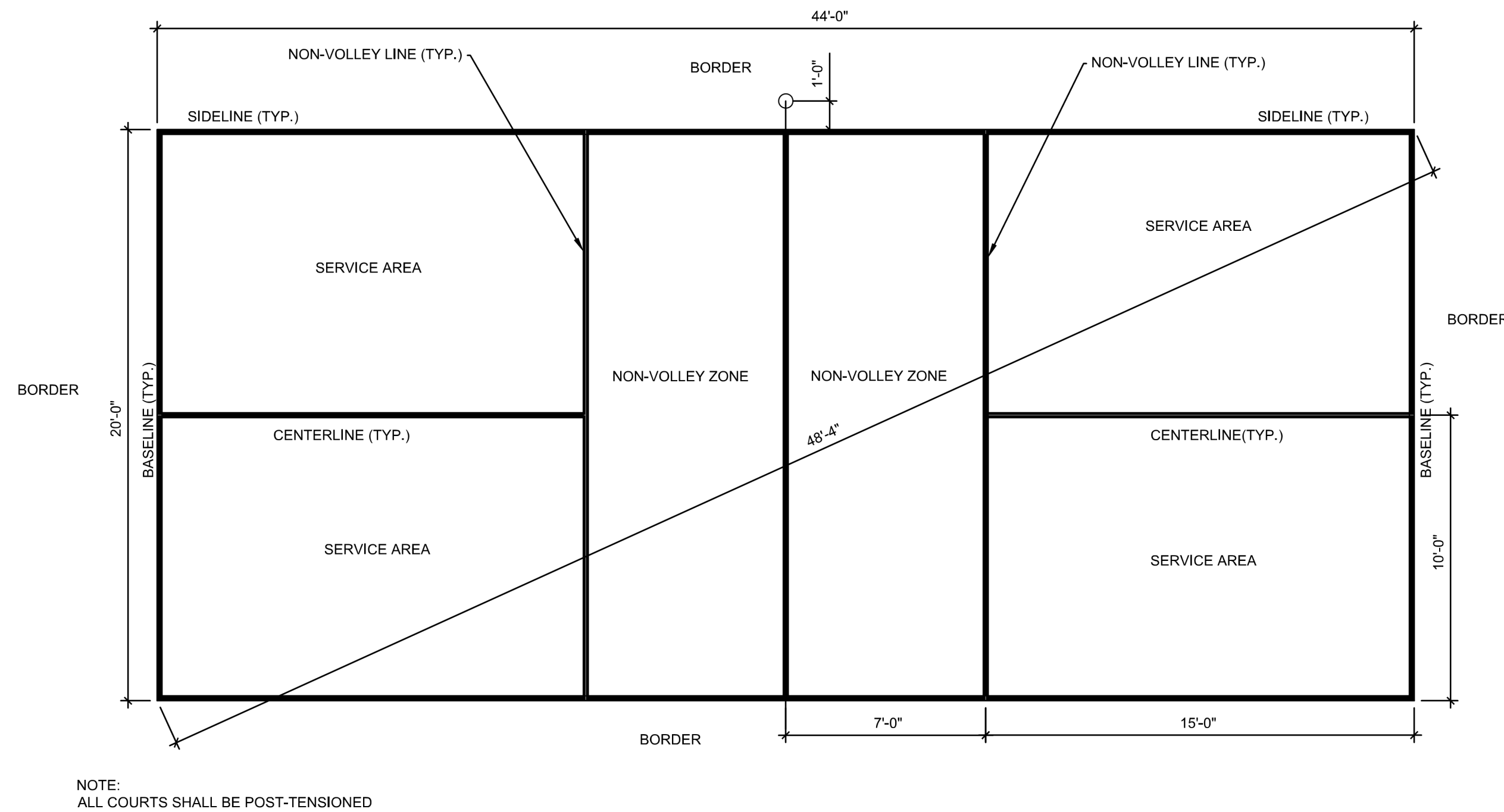
1 POST-TENSIONED FENCE DETAIL  
1" = 1'-0" VIEW-964549661



2 POST-TENSIONED COURT SECTION  
1" = 1'-0" VIEW-111752689



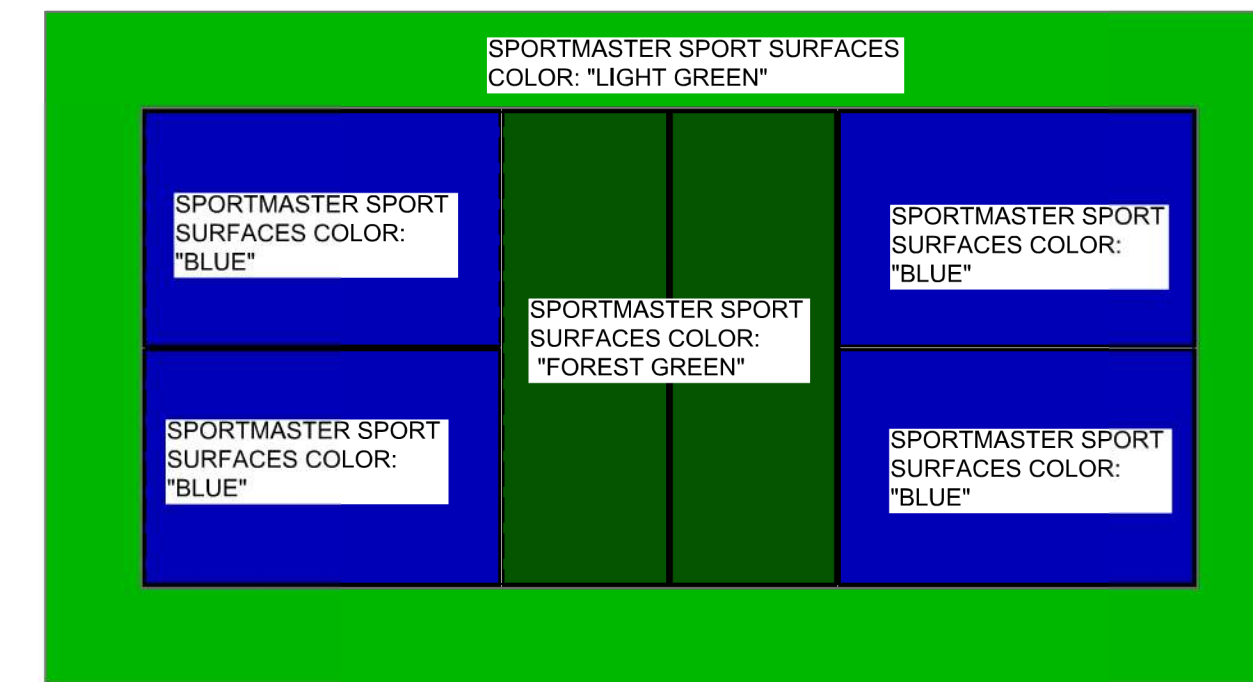
3 EDGE OF POST-TENSIONED COURTS  
3/4" = 1'-0" VIEW-627987743



4 PICKLEBALL COURT STRIPING PLAN  
1/4" = 1'-0" VIEW-593096197

NOTES:

1. THE CONTRACTOR SHALL PROVIDE AND INSTALL THE DOUGLAS SPORTS EQUIPMENT (OR APPROVED EQUAL); PICKLEBALL PREMIER RD 3" OD POSTS, BLACK, 36" ABOVE GROUND WITH 24" STEEL (GS-24) GROUND SLEEVES, INCLUDING WITH CENTER PIPE ANCHORS. THE NETS SHALL BE JTN-30 PICKLEBALL NET, 36" X 21'9", ALONG WITH A DELUXE ACS ADJUSTABLE CENTER STRAP. THE NETS SHALL BE STANDARD COLOR APPROVED BY THE CITY. PRIOR TO ORDERING THE NETS AND NET POSTS, THE CONTRACTOR SHALL SUBMIT INFORMATION TO THE LANDSCAPE ARCHITECT FOR APPROVAL (WWW.DOUGLAS-SPORTS.COM).
2. THE NET LENGTH SHOULD BE AT LEAST 21 FEET 9 INCHES EXTENDING FROM ONE POST TO THE OTHER. THE NET HEIGHT FROM THE BOTTOM EDGE OF THE NET TO THE TOP SHOULD BE AT LEAST 30 INCHES.
3. NET POSTS SHALL EXTEND 12 INCHES OUTSIDE SIDELINE.
4. ALL COURT MEASUREMENTS SHALL BE MADE TO THE OUTSIDE OF THE LINES AND ALL LINES OF THE COURT SHALL BE OF THE SAME COLOR CLEARLY CONTRASTING WITH THE COLOR OF THE SURFACE.
5. COURT COLORS:  
SUBMIT SAMPLE OF COURT SURFACING COLORS FOR FINAL APPROVAL BY OWNER.
6. TYPICAL LINE WIDTH: 2"



5 PICKLEBALL COURT SURFACING DETAIL  
1/4" = 1'-0" VIEW-853728295

NOTES:

1. COURT SURFACING COLOR 1 ACRYLIC PICKLEBALL COURT SURFACING OVER 5" CONCRETE PAVEMENT. BASIS OF DESIGN: SPORTMASTER SPORT SURFACES SYSTEM: PICKLEMASTER RTU PICKLEBALL COURT PAINT MANUFACTURED BY SPORTMASTER SPORT SURFACES. PH: 800-395-7325, WWW.SPORTMASTER.NET. INSTALL PER MANUFACTURER'S RECOMMENDATIONS AND FILL ALL JOINTS/CRACKS PRIOR TO INSTALLATION. COLOR AS SHOWN".
2. COURT SURFACING COLOR 2 ACRYLIC PICKLEBALL COURT SURFACING OVER 5" CONCRETE PAVEMENT. BASIS OF DESIGN: SPORTMASTER SPORT SURFACES SYSTEM: PICKLEMASTER RTU PICKLEBALL COURT PAINT MANUFACTURED BY SPORTMASTER SPORT SURFACES. PH: 800-395-7325, WWW.SPORTMASTER.NET. INSTALL PER MANUFACTURER'S RECOMMENDATIONS AND FILL ALL JOINTS/CRACKS PRIOR TO INSTALLATION. COLOR AS SHOWN".
3. COURT SURFACING COLOR 3 ACRYLIC PICKLEBALL COURT SURFACING OVER 5" CONCRETE PAVEMENT. BASIS OF DESIGN: SPORTMASTER SPORT SURFACES SYSTEM: PICKLEMASTER RTU PICKLEBALL COURT PAINT MANUFACTURED BY SPORTMASTER SPORT SURFACES. PH: 800-395-7325, WWW.SPORTMASTER.NET. INSTALL PER MANUFACTURER'S RECOMMENDATIONS AND FILL ALL JOINTS/CRACKS PRIOR TO INSTALLATION. COLOR AS SHOWN".
4. WHITE STRIPING PER SURFACING MANUFACTURER. STRIPING SHALL BE 2" WIDE UNLESS OTHERWISE NOTED.



SOUTH LAKES PARK -  
PICKLEBALL COMPLEX  
WICHITA, KS

Issue:		
BID SET		5/25/23

JOB NO.	220008-001
DATE	25 MAY 2023
PM	NLS
DESIGNED BY	NLS
DRAWN BY	JSG
CHECKED BY	MEB

SITE ARCHITECTURAL  
DETAILS

SA504