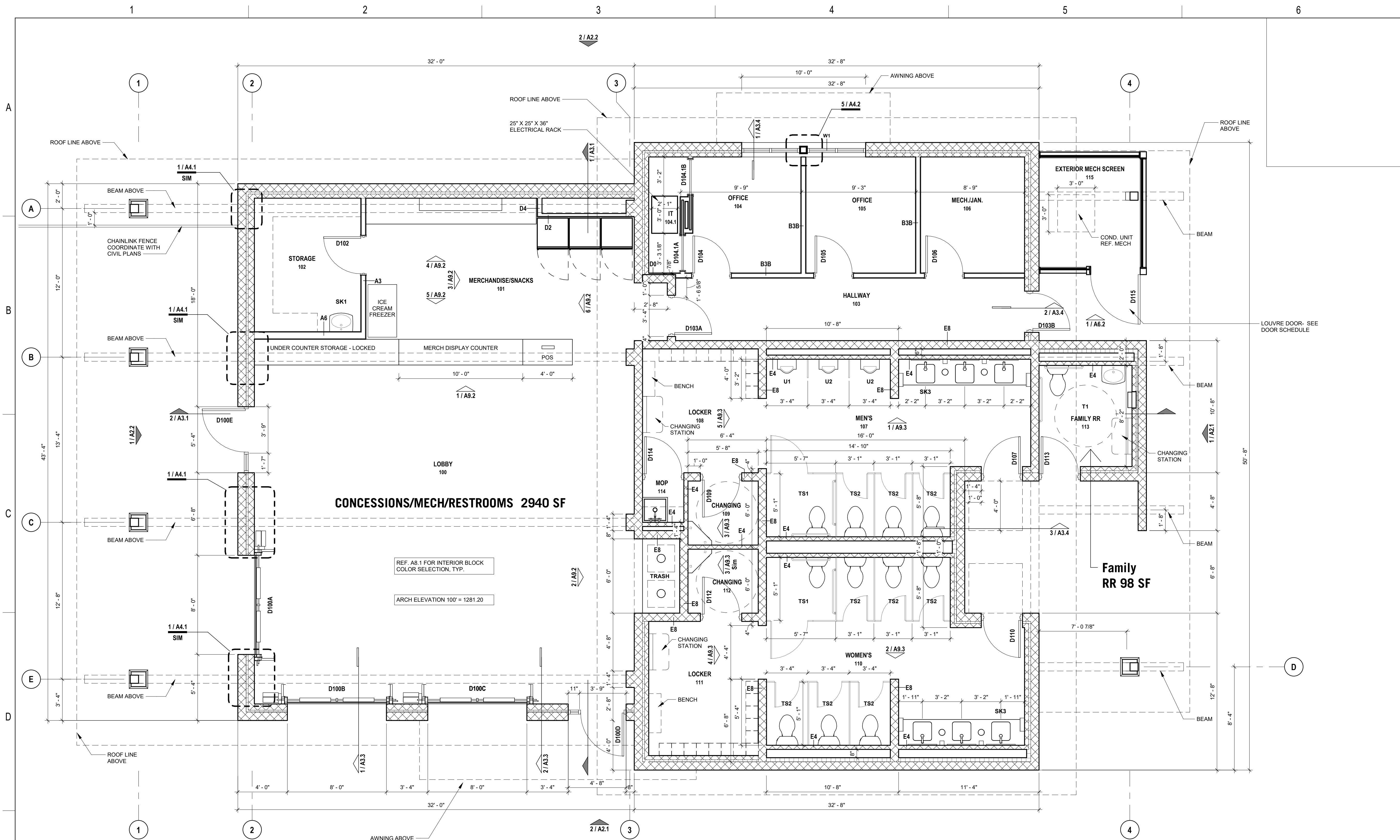


10/10/2023 2:54:06 PM  
 C:\Local Revit Projects\South Lakes Pickleball Complex\_bmmitchell\_sa.rvt



**1 FLOOR PLAN**  
 1/4" = 1'-0"

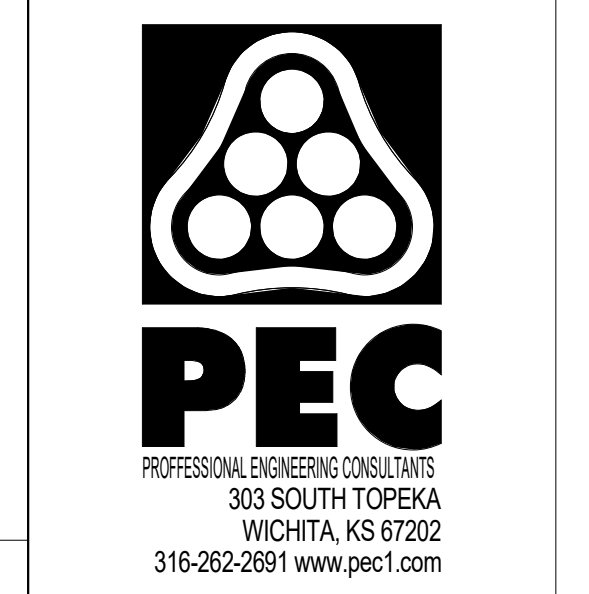
- SEE SITE PLANS FOR ALL EXTERIOR CONCRETE WALK LOCATIONS.
- ALL TRANSITIONS BETWEEN EXTERIOR WALLS AND INTERIOR PARTITIONS TO BE FRAMED IN COMMON LINE (UNLESS NOTED OTHERWISE), GC TO COORDINATE.
- ALL INTERIOR PARTITIONS TO BE TYPE ... UNLESS OTHERWISE NOTED. GC TO COORDINATE WALL THICKNESS WITH PLUMBING/STRUCTURAL REQUIREMENTS. ARCHITECT TO BE NOTIFIED OF ANY CHANGE IN WALL THICKNESS DUE TO SUCH REQUIREMENTS.
- SEE REFLECTED CEILING PLAN(S) AND INTERIOR ELEVATIONS FOR LOCATION OF CONTROL JOINTS. ARCHITECT TO BE NOTIFIED IF LOCATIONS NEED TO BE CHANGED.
- ALL DOORS TO HAVE MIN 1'-6" ON PULL SIDE OF DOOR (FROM DOOR EDGE).
- ALL DOORS WITH BOTH CLOSER AND LATCH TO HAVE MIN 1'-0" (FROM DOOR EDGE) ON PUSH SIDE OF DOOR.
- PROVIDE 2" STEEL TUBE (CONCEALED WITHIN WALL) AT ALL PARTIAL HEIGHT WALL LOCATIONS FOR RIGIDITY.
- DIMENSIONS @ EXTERIOR WALL ARE TO EDGE OF MASONRY.
- DIMENSIONS @ INTERIOR WALL ARE TO FACE OF STUD UNLESS NOTED OTHERWISE.
- LEVEL 4 GYPSUM FINISH TYPICAL.

- FD FLOOR DRAIN, REF MECHANICAL - SLOPE CONCRETE AS NECESSARY AROUND DRAIN TO GAIN POSITIVE DRAINAGE
- FEC FIRE EXTINGUISHER CABINET - MOUNT WITH FIRE EXTINGUISHER HANDLE AT 48" AFF MAX
- NIC NOT IN CONTRACT - EQUIPMENT SHOWN DASHED TO BE PROVIDED BY OWNER. GC TO PROVIDE NECESSARY ELEC / MECH REQUIREMENTS.
- WH WATER HEATER, REF MECHANICAL

**PLAN NOTES**

**PLAN LEGEND**

**CODE INFO**



**SOUTH LAKES SPORTS PARK**  
 WICHITA, KS

Issue:		
100% PLANS		10/16/23

JOB NO.	220008-003
DATE	16 OCTOBER 2023
PM	NLS
DESIGNED BY	BRM
DRAWN BY	BRM
CHECKED BY	DBB

FLOOR PLAN

**A1.1**



SHELDENARCH.COM  
 800 E. First Suite 140 Wichita, KS 67202 316.263.4300