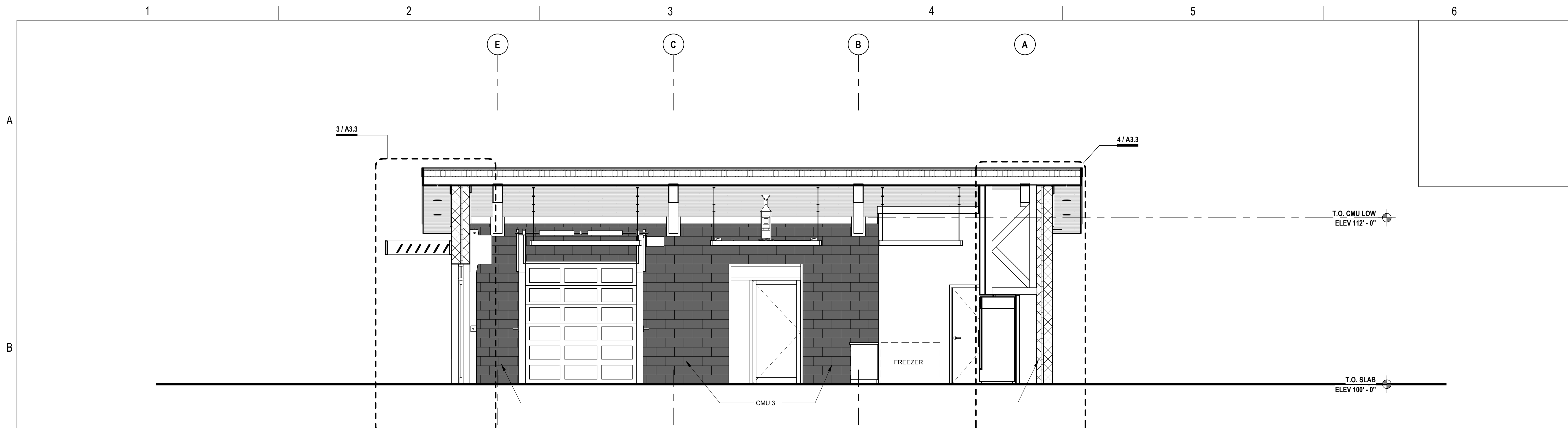
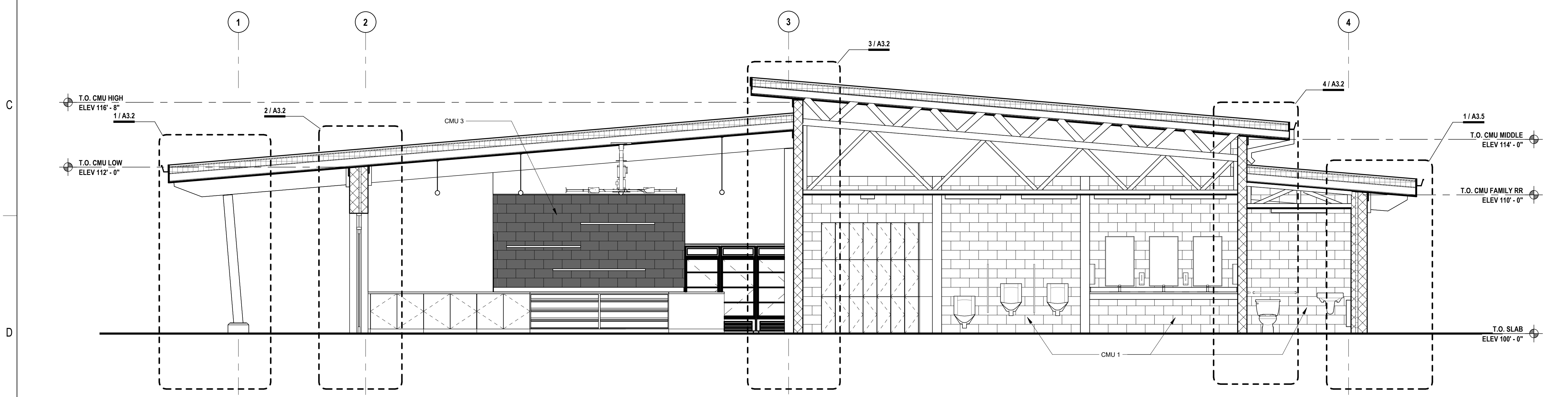


10/10/2023 2:54:09 PM
 C:\Local Revit Projects\South Lakes Pickleball Complex_bmitcheil_sa.rvt



1 BUILDING SECTION
 1/4" = 1'-0"



2 BUILDING SECTION
 1/4" = 1'-0"

ACT	BATT INSULATION	BRAKE METAL	CEDAR SOFFIT	CMU	DOWNSPOUT & GUTTER	FASCIA	GYP BD	HM DOOR AND FRAME	INSULATED GLAZING	INTERIOR GLAZING	METAL FLASHING	METAL STUD FRAMING	PERIMETER INSULATION	PRE-FINISHED MTL AWNING	SEALANT	SHEATHING	SIDEWALK	STOREFRONT EXTERIOR ALUM	VAPOR BARRIER
ACOUSTICAL CEILING TILE SEE REFLECTED CEILING PLAN FOR LAYOUT AND HEIGHT. SEE FINISH SCHEDULE FOR TYPE.	R-19 FIBERGLASS WALL INSULATION	PRE-FINISHED 24 GA METAL, MFG STANDARD KYNAR 500 FLUOROCARBON STEEL OVER SHEATHING COLOR: TO BE SELECTED	1X6 EV1S WRCLA S3S CLEAR V.G. HEART T&G. PROVIDE A CLEAR SIKKENS FINISH	8" WIDE CMU BLOCK - SEE STRUCTURAL FOR REBAR AND CORE GROUTING LADDER TIES AT 16" OC UNLESS OTHERWISE NOTED. SEE CMU 1, 2, AND 3 FOR COLORS AND FINISH. SEE WALL SECTIONS FOR INTERIOR CMU THICKNESSES	PRE-FINISHED 20 GA FIRESTONE METAL PRODUCTS UNA-CLAD (OR EQUAL), FINISH TO MATCH STOREFRONT. GUTTER - 6" CONTINUOUS/SEAMLESS.	PRE-FINISHED 20 GA FIRESTONE METAL PRODUCTS UNA-CLAD (OR EQUAL), FINISH TO MATCH STOREFRONT	5/8" TYPE "X" GYPSUM BOARD UNLESS OTHERWISE NOTED	HOLLOW METAL DOOR AND FRAME SEE DOOR SCHEDULE. PAINT FINISH. COMPLETELY FILL FRAMES W/ BATT INSULATION.	1" INSULATED GLASS SYSTEM - HIGH PERFORMANCE INSULATING GLASS UNITS WITH LOW-E COATING, TEMPERED. PROVIDE SHOP DRAWINGS AND SAMPLES FOR APPROVAL. COLOR: CLEAR.	1/4" CLEAR POLISHED PLATE GLASS ON NEOPRENE PADS AND SET IN COMPRESSION SET VINYL GLAZING STRIPS. GLASS TO BE TEMPERED AS REQUIRED.	26 GA GALV SHEET METAL WHERE CONCEALED FROM VIEW.	18 GA METAL STUDS @ 16" OC MAX - SIZE VARIES OR AS INDICATED BY PARTITION TYPE & STRUCTURAL	1 1/2" POLYISO EXTEND 24" VERTICAL AND 24" HORIZONTAL	PRE-FINISHED METAL AWNING BY WICHITA CANOPY OR APPROVED EQUAL.	STOREFRONT AND CONCEALED EXTERIOR JOINT SEALANT: SONOLASTIC NP 1 GUN-GRADE POLYURETHANE SEALANT, COLOR TO BE SELECTED.	EXTERIOR SHEATHING - 5/8" DENS-GLASS UNLESS OTHERWISE NOTED. INSTALLED PER MANUFACTURER'S RECOMMENDATIONS - TAPE JOINTS IF TO BE EXPOSED FOR MORE THAN 7 DAYS OR AS REQUIRED BY MANUFACTURER.	4" CONCRETE OVER SAND BED SEE CIVIL PLAN FOR LOCATIONS AND GRADING PLAN FOR HEIGHT	KAWNEER 451-T (OR EQUAL), V.G. CENTER SET, INSIDE GLAZED, THERMALLY BROKEN, CLEAR ANODIZED FRAMING SYSTEM W/ 350 MEDIUM STYLE DOORS & RAILS FOR 1" GLAZING. INSTALL PER MANUFACTURER'S RECOMMENDATIONS. ENSURE END DAMS ARE THOROUGHLY SEALED.	STO GOLD COAT 80265 FLUID APPLIED VAPOR PERMEABLE AIR BARRIER - PROVIDE WITH STO GUARD JOINT AND ROUGH OPENING TREATMENT AND OTHER COMPONENTS FOR COMPLETE STO GUARD ASSEMBLY. INSTALL PER MANUFACTURER'S RECOMMENDATIONS

MATERIAL LEGEND

KEY	DESCRIPTION
	CMU 1 - BURNISHED CMU LIGHT GRAY
	CMU 2 - SPLIT FACE CMU
	CMU 3 - BURNISHED CMU DARK GRAY

SHELDEN ARCHITECTURE
 SHELDENARCH.COM
 800 E. First Suite 140 Wichita, KS 67202 316.263.4300



SOUTH LAKES SPORTS PARK
 WICHITA, KS

Issue:	100% PLANS	10/16/23

JOB NO.	220008-003
DATE	16 OCTOBER 2023
PM	NLS
DESIGNED BY	BRM
DRAWN BY	BRM
CHECKED BY	DBB

BUILDING SECTIONS

A3.1