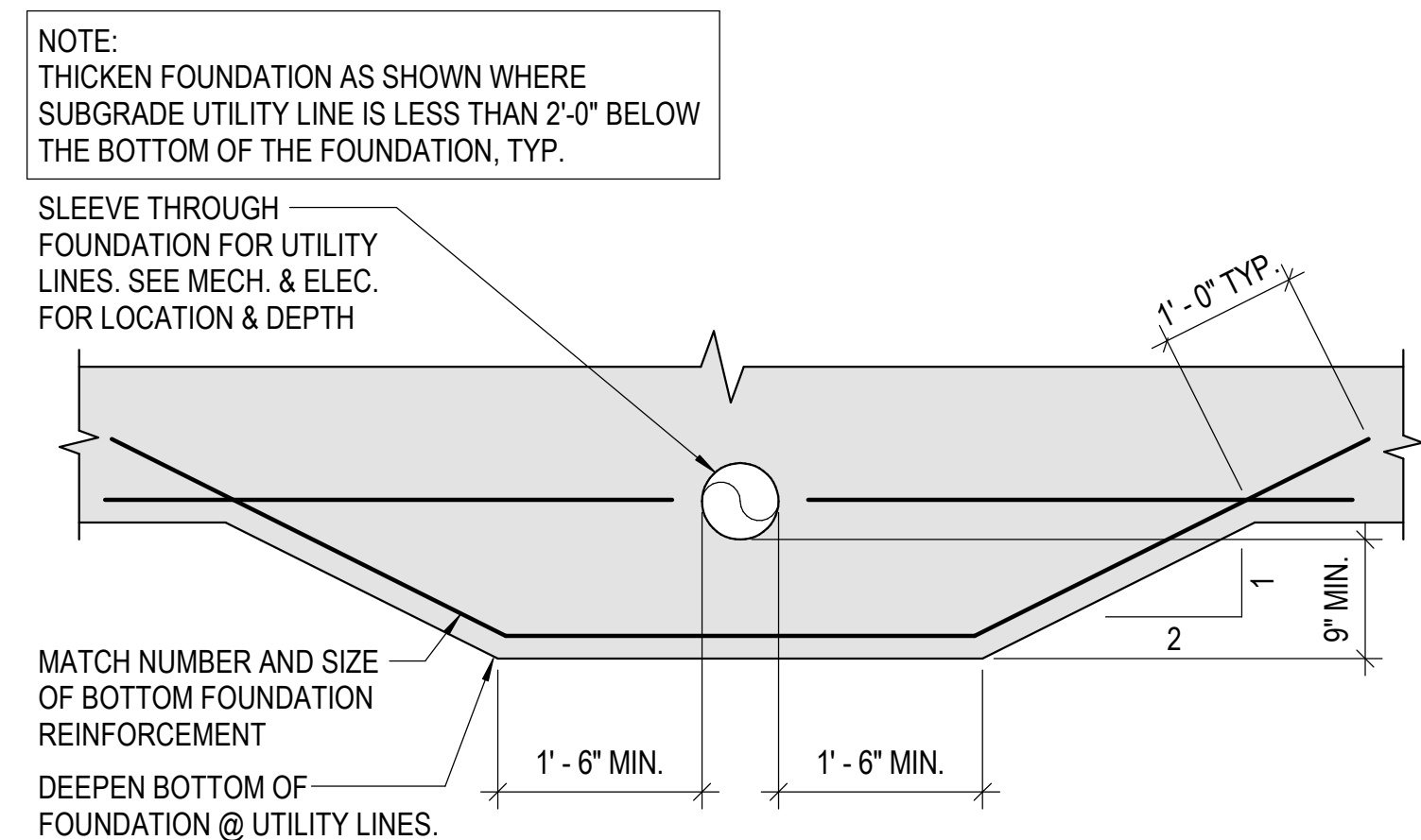


CONCRETE REINFORCEMENT LAPS AND EMBEDMENT LENGTHS  
 $f_y = 60000 \text{ psi}$     $f_c = 4000 \text{ psi}$

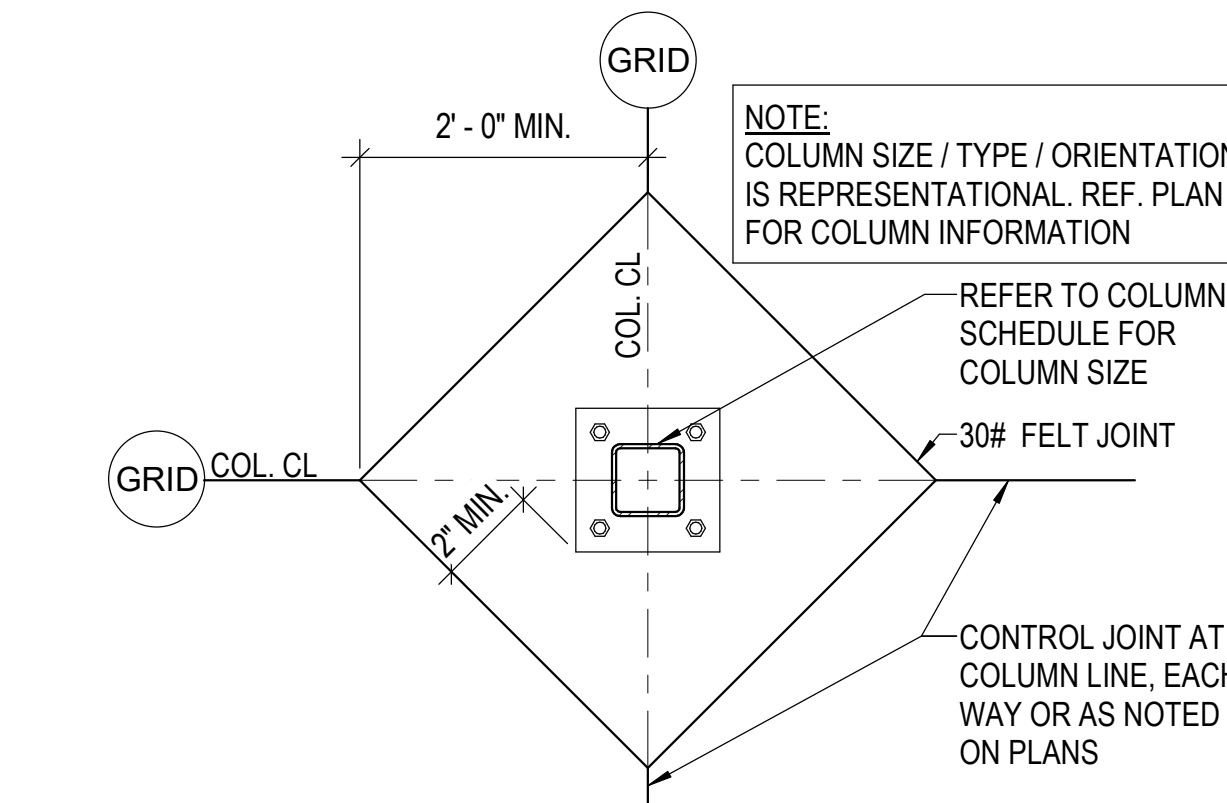
BAR SIZE (d)	CLEAR SPACING (s) (in.)			EMBEDMENT & CLASS A LAP (in.)			CLASS B LAP (in.)			HOOK EMBED (in.)						
				TOP BAR		OTHER BARS	TOP BAR		OTHER BARS							
	2d	3d	5d	2d < S < 3d	S < 3d	S < 5d	2d < S < 3d	S < 3d	S < 5d							
3	3/4	1 1/8	1 7/8	28	18	12	21	14	12	36	24	14	28	18	12	8
4	1	1 1/2	2 1/2	37	25	15	28	19	12	48	32	19	37	25	15	10
5	1 1/4	1 7/8	3 1/8	46	31	18	36	24	14	60	40	24	46	31	18	12
6	1 1/2	2 1/4	3 3/4	55	37	22	43	28	17	72	48	29	55	37	22	15
7	1 3/4	2 5/8	4 3/8	81	54	32	62	42	25	105	70	42	81	54	32	18
8	2	3	5	92	62	37	71	47	28	120	80	48	92	62	37	20
9	2 1/4	3 3/8	5 5/8	104	70	42	80	54	32	136	90	54	104	70	42	22
10	2 1/2	3 3/4	6 3/8	117	78	47	90	60	36	153	102	61	117	78	47	25
11	2 7/8	4 1/4	7	130	87	52	100	67	40	170	113	68	130	87	52	27

NOTES:  
1. LENGTHS SHOWN CONFORM WITH NON-SEISMIC PROVISIONS OF ACI 318 FOR UNCOATED BARS.  
2. BAR CLEAR SPACING IS THE CENTER TO CENTER BAR SPACING MINUS ONE BAR DIAMETER.  
3. CLASS A LAP LENGTHS APPLY WHEN BAR LAPS ARE STAGGERED TO LAP HALF THE BARS AT THE SAME LOCATION. USE CLASS B LAP FOR ALL OTHER CASES.  
4. TOP BARS ARE HORIZONTAL REINFORCEMENT PLACED SO THAT MORE THAN 12 INCHES OF CONCRETE IS CAST BELOW THE REINFORCEMENT.  
5. MULTIPLY LAP AND EMBEDMENT LENGTHS GIVEN BY 2.0 FOR BARS WITH CLEAR SPACING OF TWO BAR DIAMETERS OR LESS, OR CONCRETE COVER OF ONE BAR DIAMETER OR LESS.

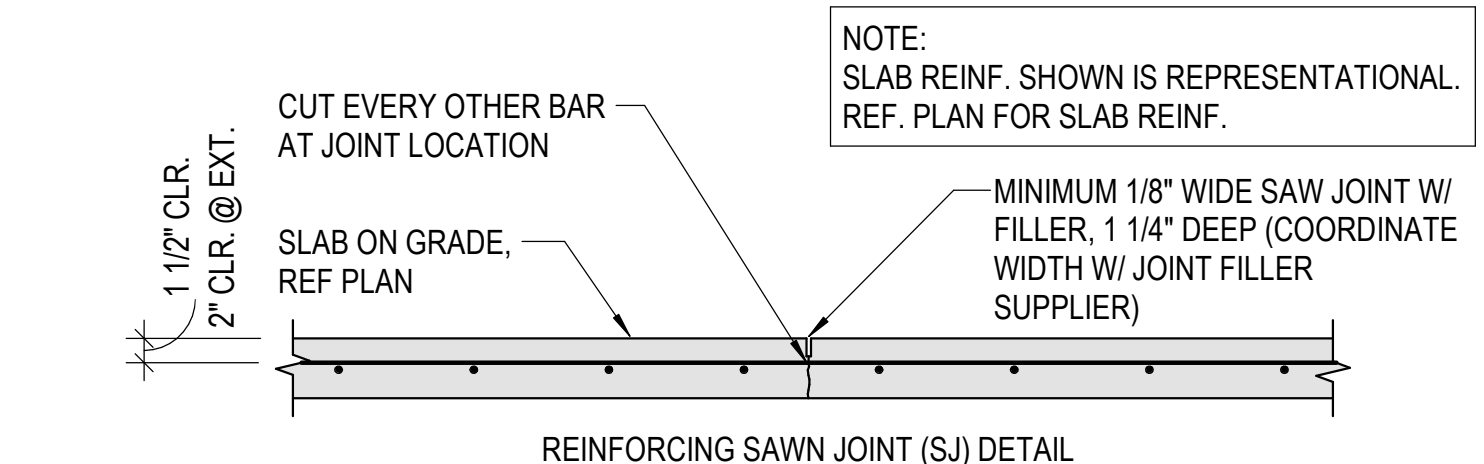
**1 CONCRETE REINF. LAP TABLE**  
**NO SCALE**



**4 TYP. UTILITY THRU FTG.**  
**NO SCALE**

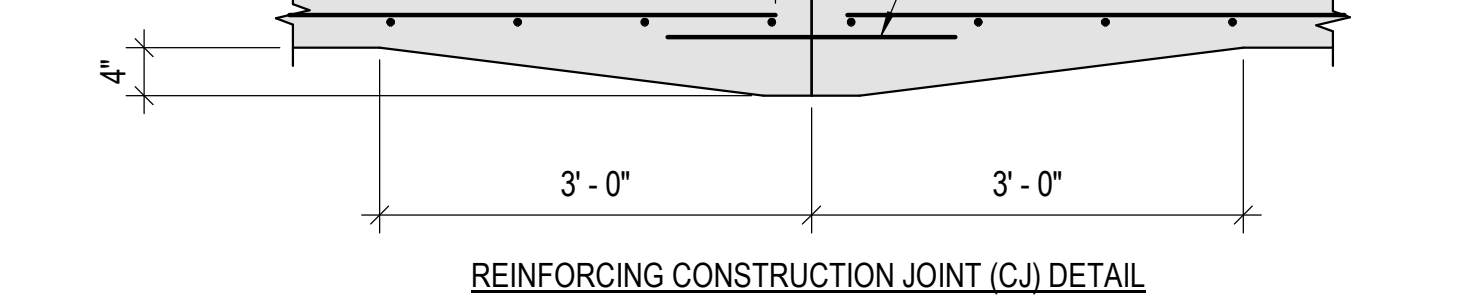


**7 TYP. COL. ISOLATION JOINT**  
**NO SCALE**

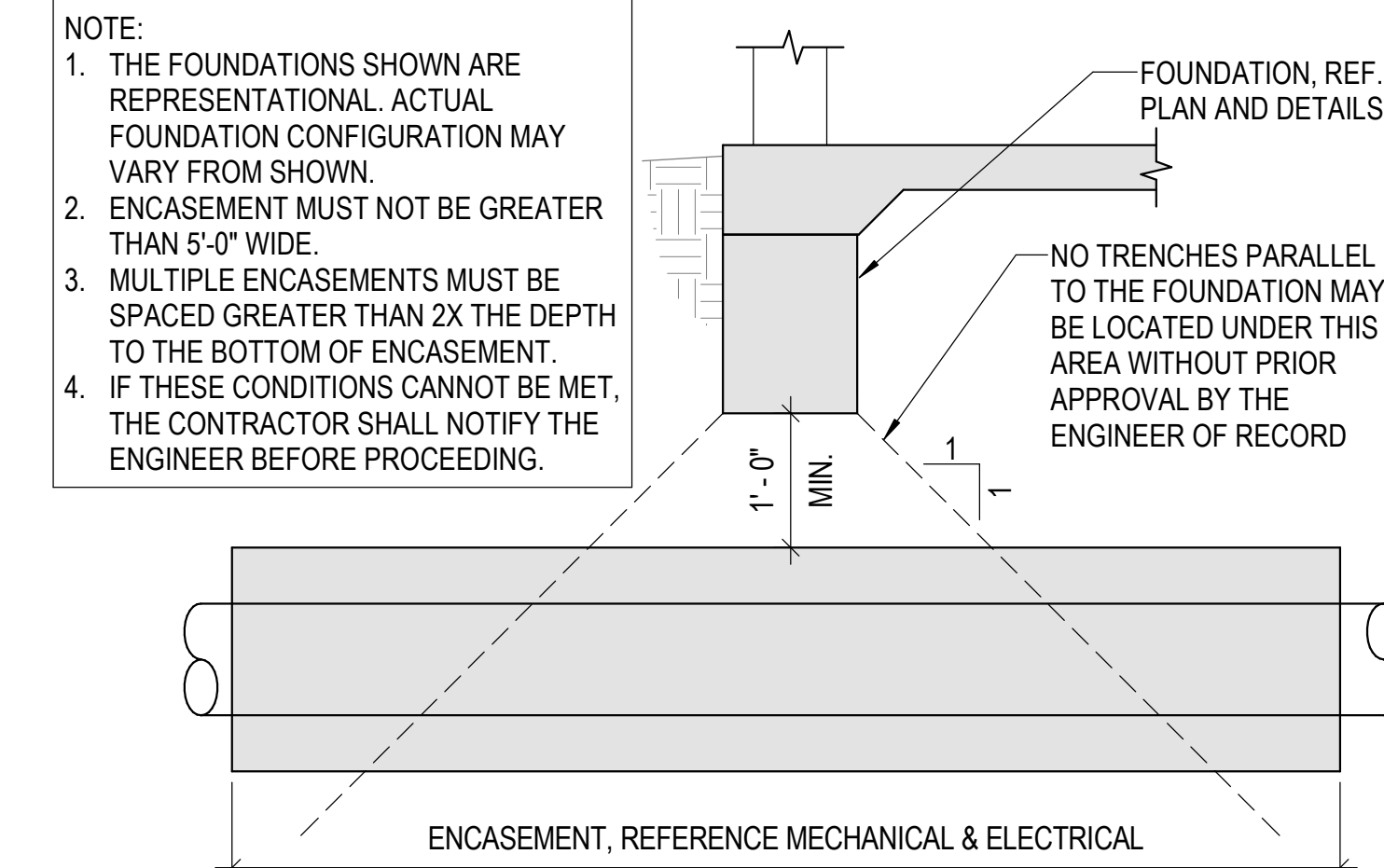


SMOOTH BAR DOWELS

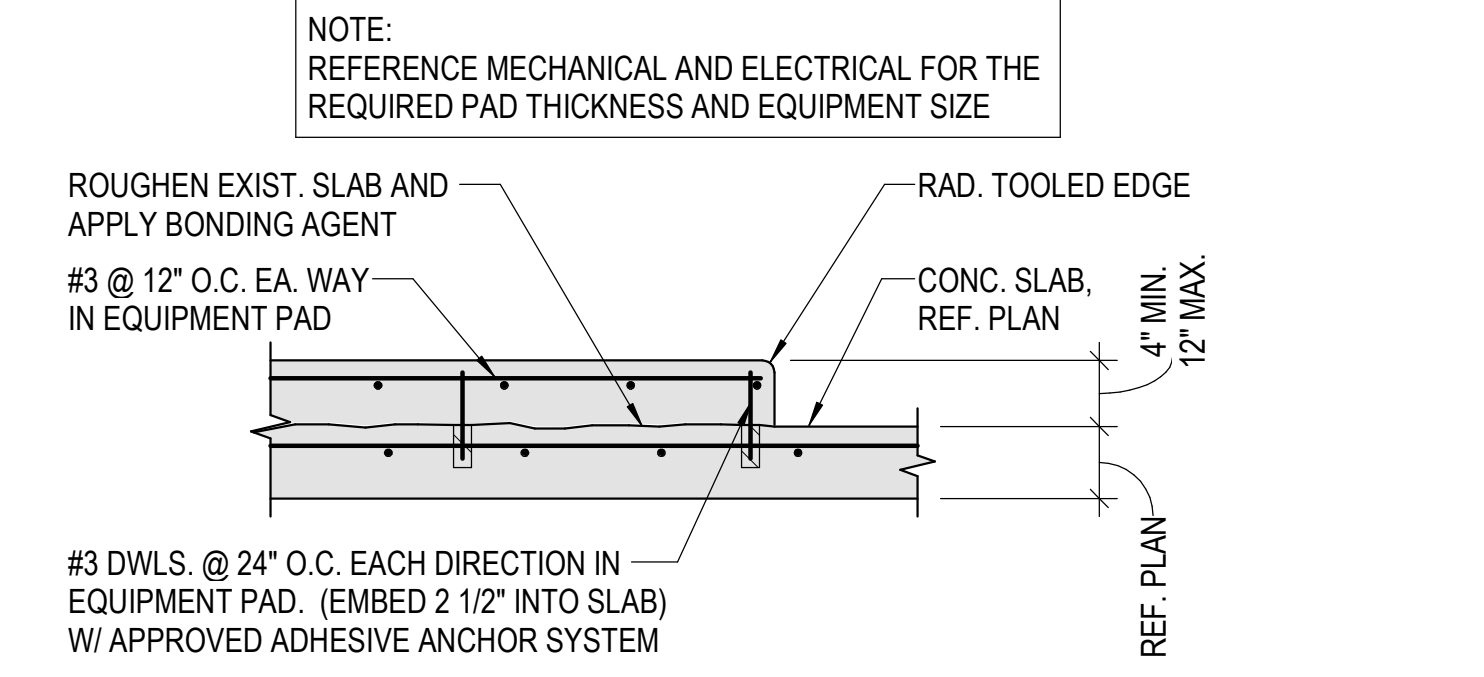
SLAB DEPTH	DOWEL DIMENSION	DOWEL SPACING
4" TO 6"	3/4"ØX1'-2"	12" O.C.
7" TO 8"	1"ØX1'-4"	12" O.C.
9" TO 11"	1-1/4"ØX1'-6"	12" O.C.



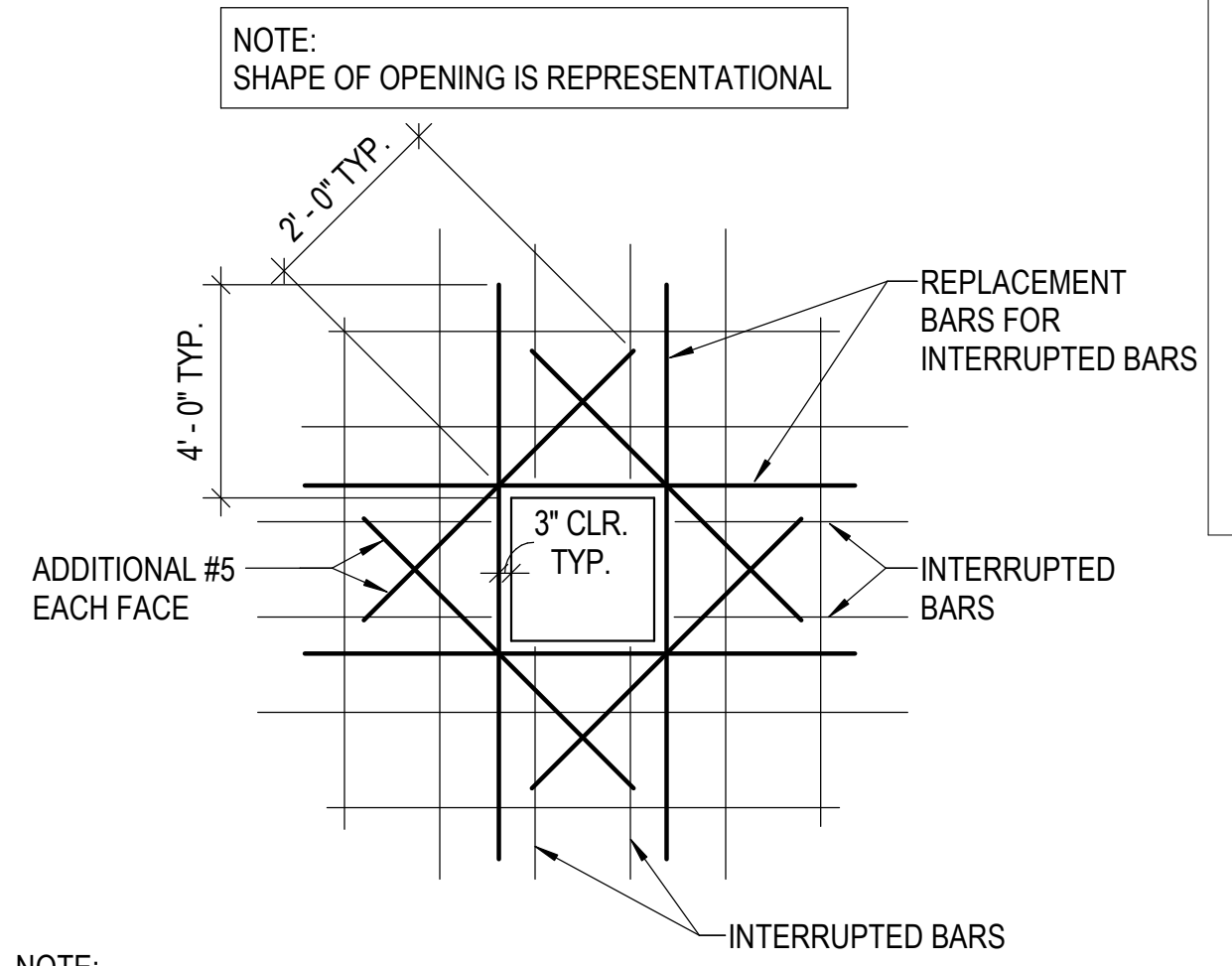
**2 TYP. SLAB ON GRADE JOINT**  
**NO SCALE**



**5 UTILITY ENCASEMENT UNDER FTG.**  
**NO SCALE**

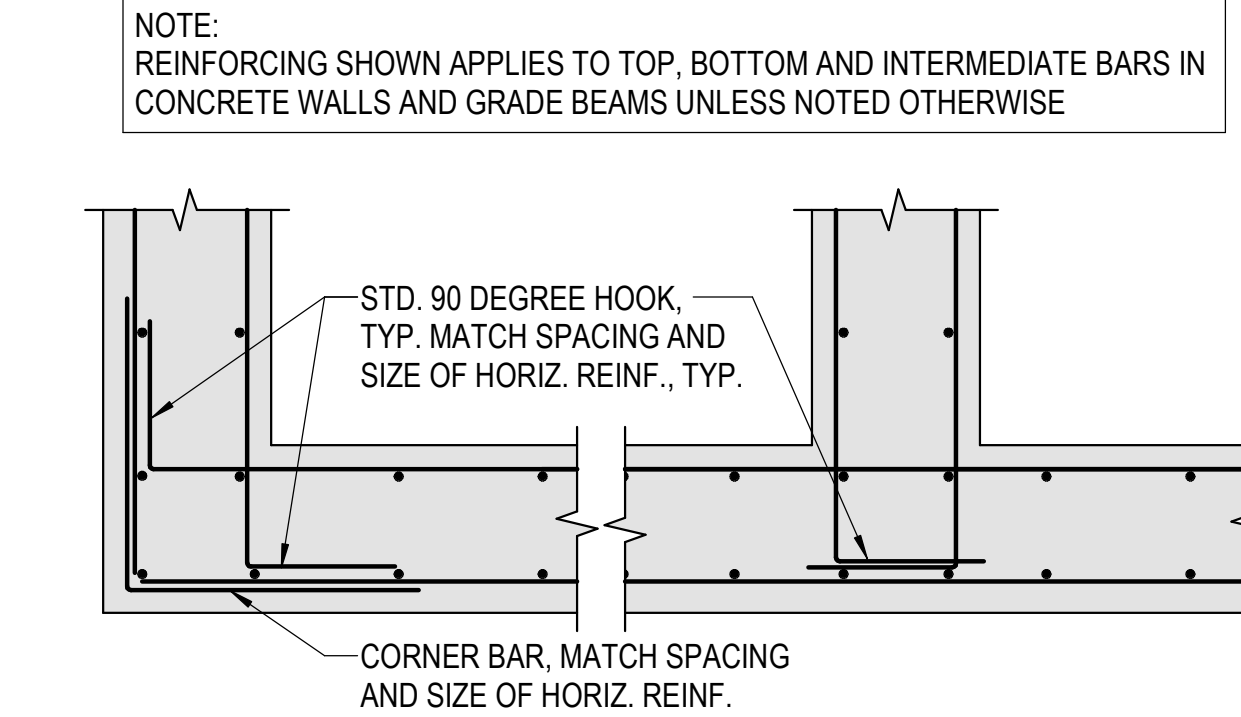


**8 TYP. INTERIOR EQUIP. PAD**  
**NO SCALE**

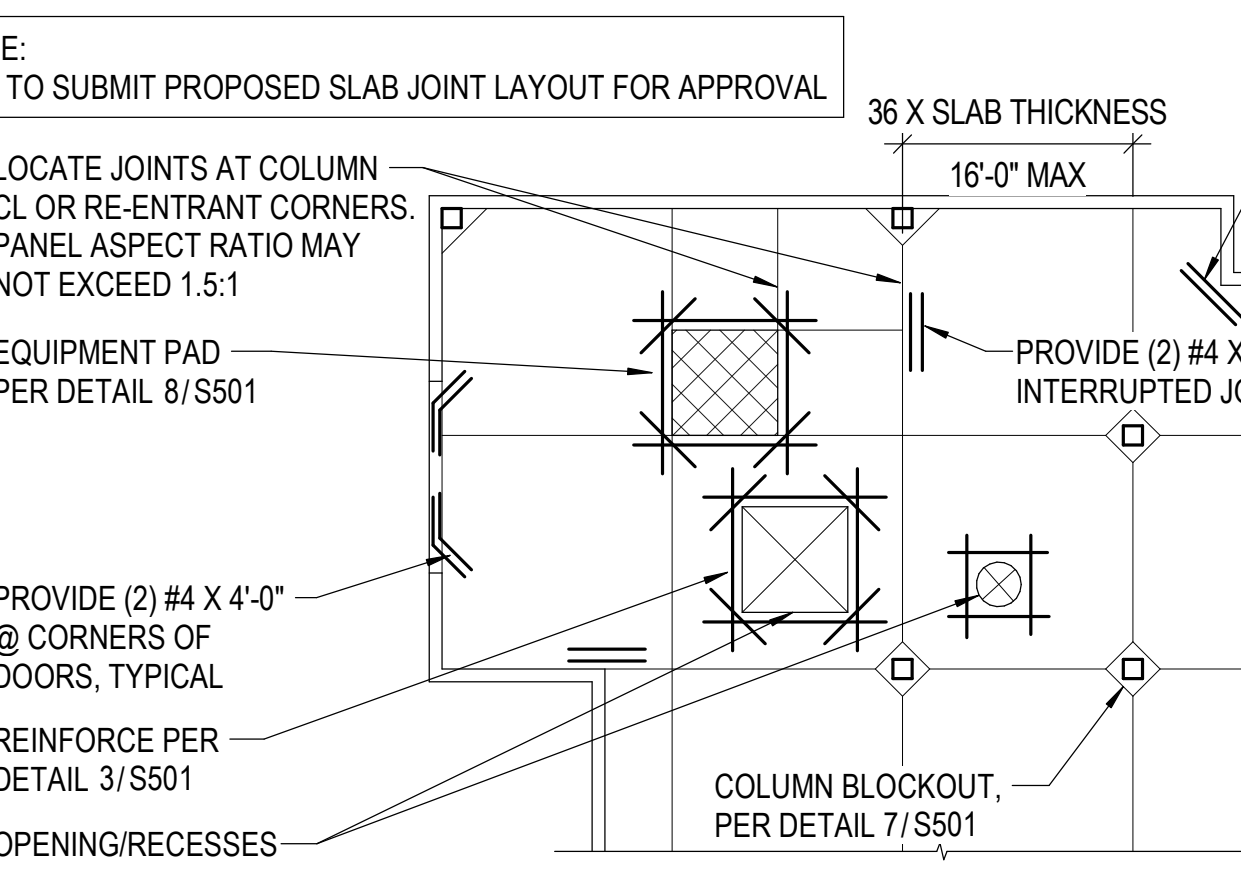


NOTE:  
1. USE THIS DETAIL FOR ALL OPENINGS GREATER THAN 8" IN CONCRETE WALLS AND SLABS, PROVIDE (2) #5 ON DIAGONAL AS SHOWN. EXTEND BARS 2'-0" PAST OPENING. REPLACE ALL VERTICAL AND HORIZONTAL BARS INTERRUPTED BY THE OPENING WITH AN EQUAL NUMBER AND SIZE BARS EVENLY DIVIDED ON EACH SIDE OF THE OPENING UNLESS NOTED OTHERWISE.  
2. REF. PLANS FOR OPENING LOCATIONS.

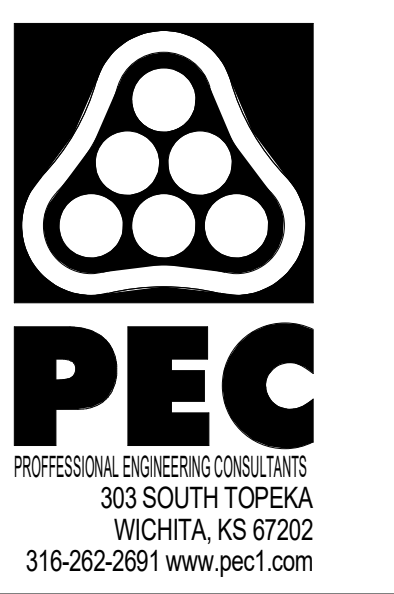
**3 TYP. CONG. OPENING REINF.**  
**NO SCALE**



**6 TYP. CORNER/INTERSECTION**  
**NO SCALE**



**9 TYP. SLAB JOINT DETAIL**  
**NO SCALE**



SOUTH LAKES SPORTS PARK WICHITA, KS

Issue:		
100% PLANS		10/18/23
JOB NO.	220008-003	
DATE	18 OCTOBER 2023	
PM	NLS	
DESIGNED BY	RST	
DRAWN BY	RST	
CHECKED BY	WAG	

TYPICAL FOUNDATION DETAILS

S501