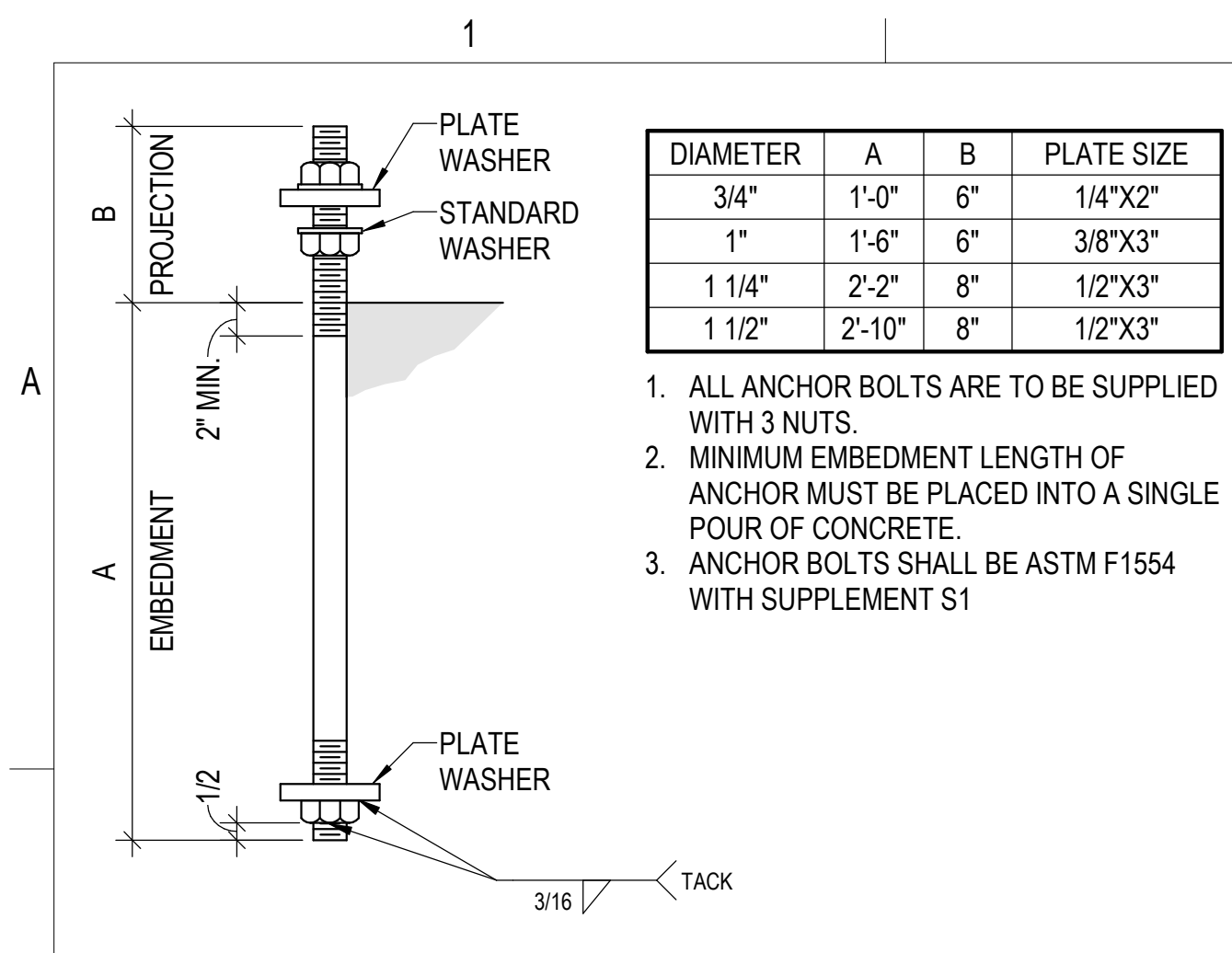
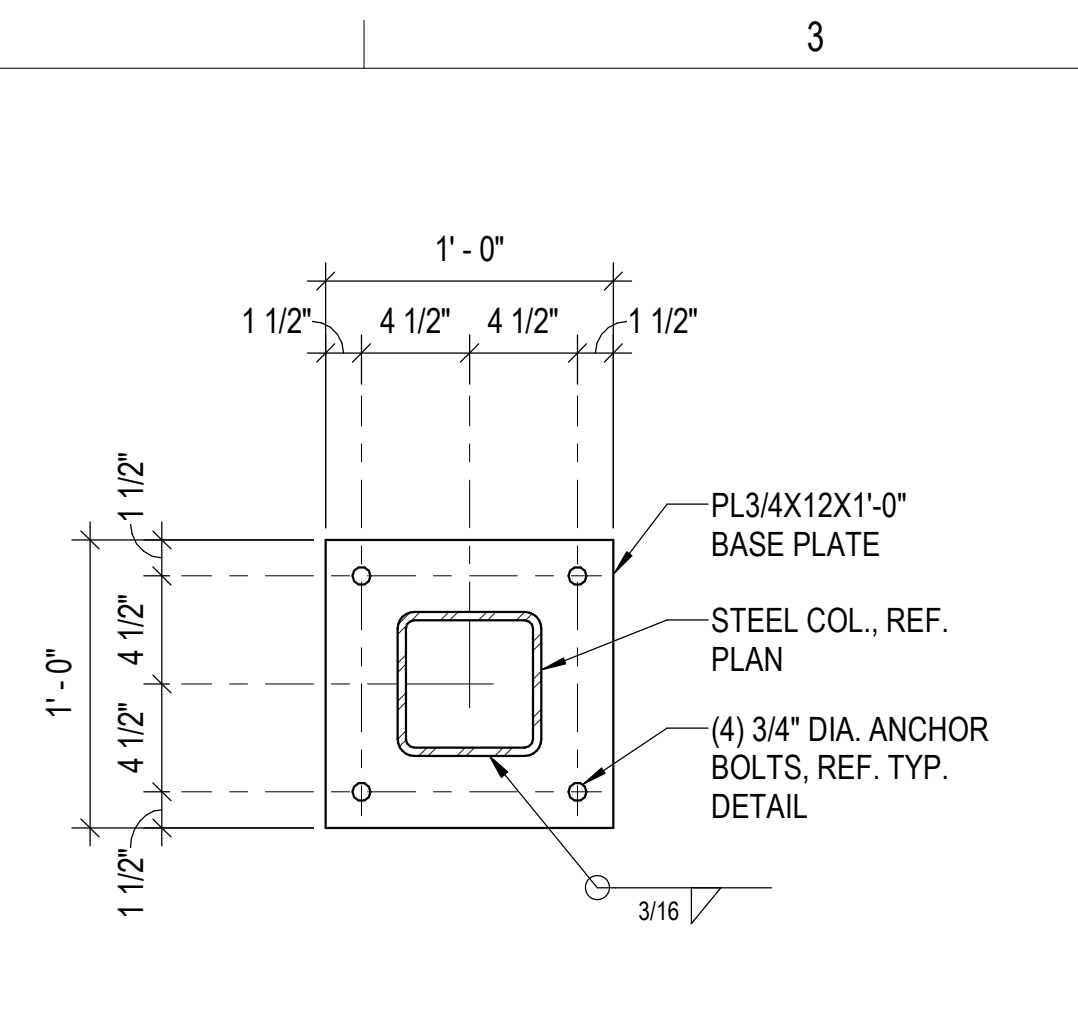


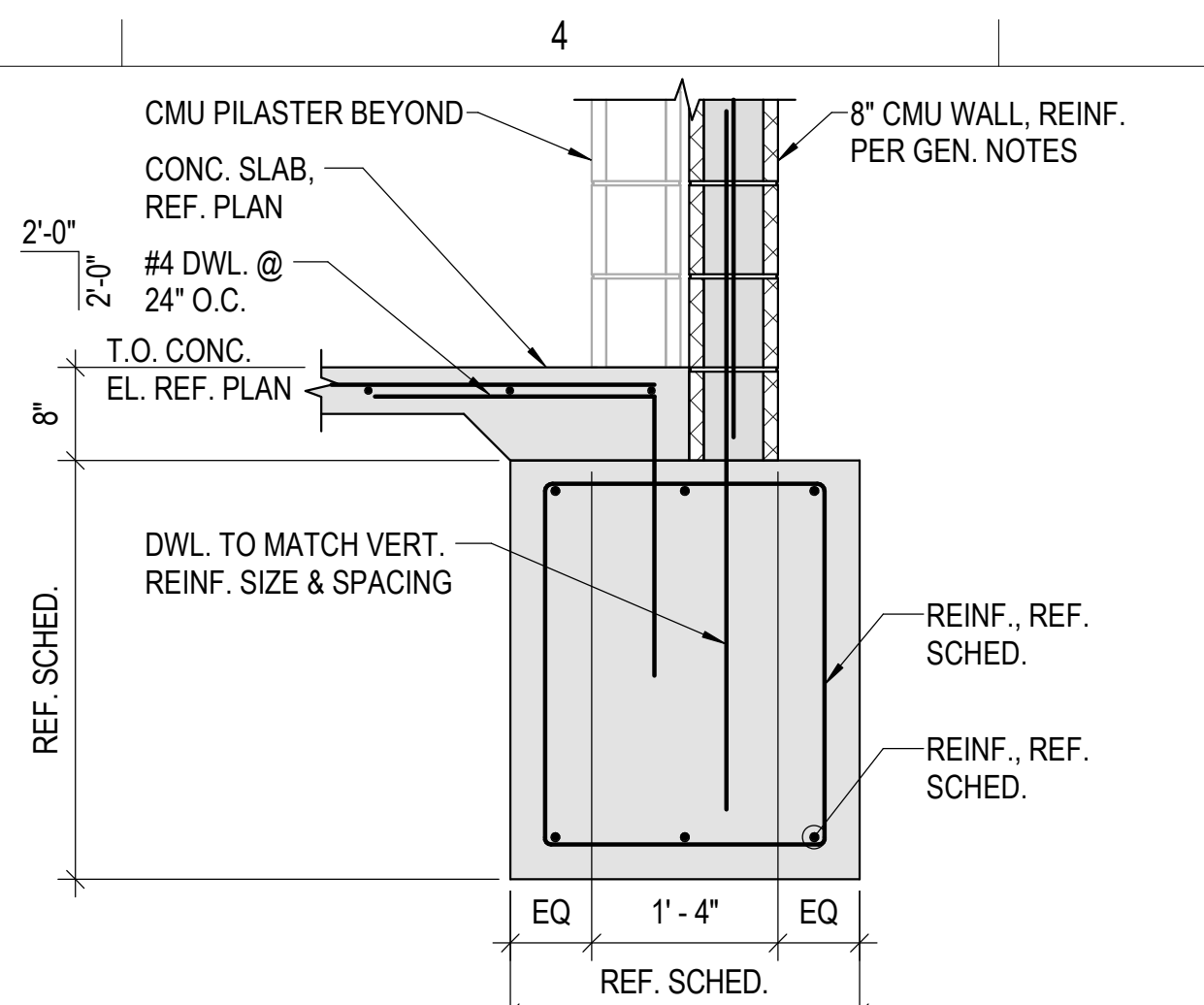
10/18/2023 4:09:53 PM
Autodesk Docs://220008-001 - South Lakes Pickleball Complex/220008-001_STRUCT_R22.rvt



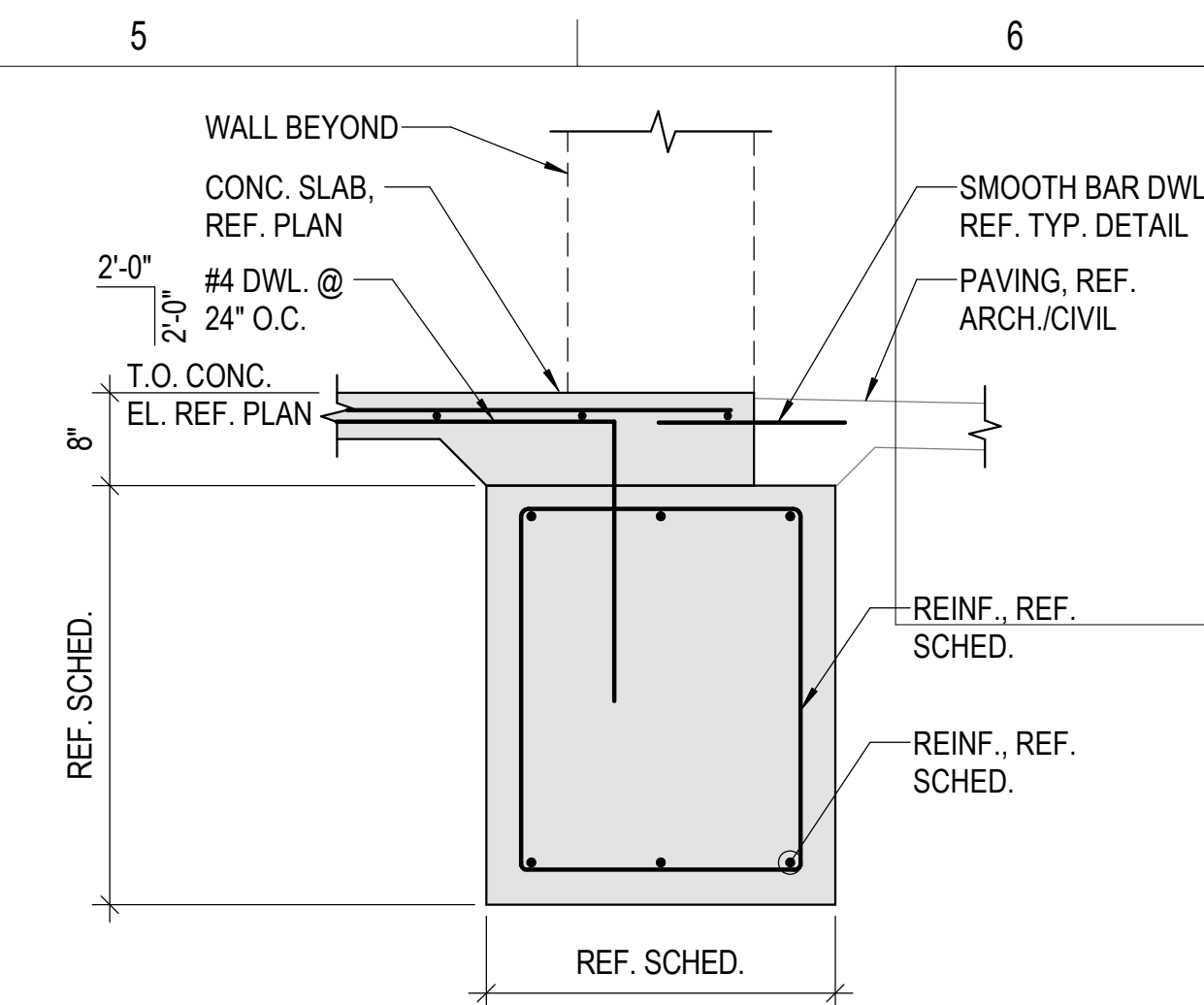
1 TYPICAL ANCHOR BOLT DETAIL
NO SCALE



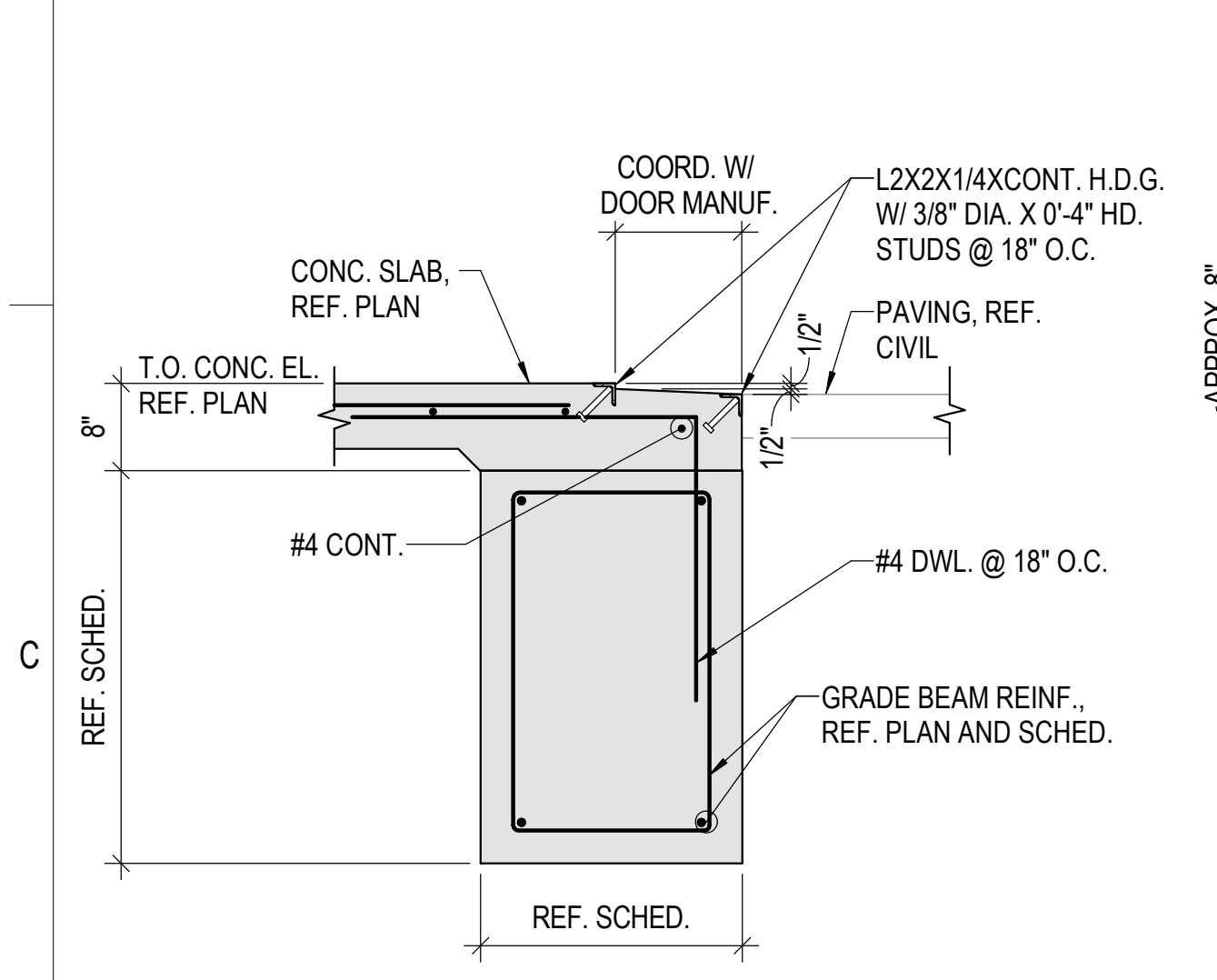
2 TYP. BASE PLATE DETAIL
1 1/2" = 1'-0"



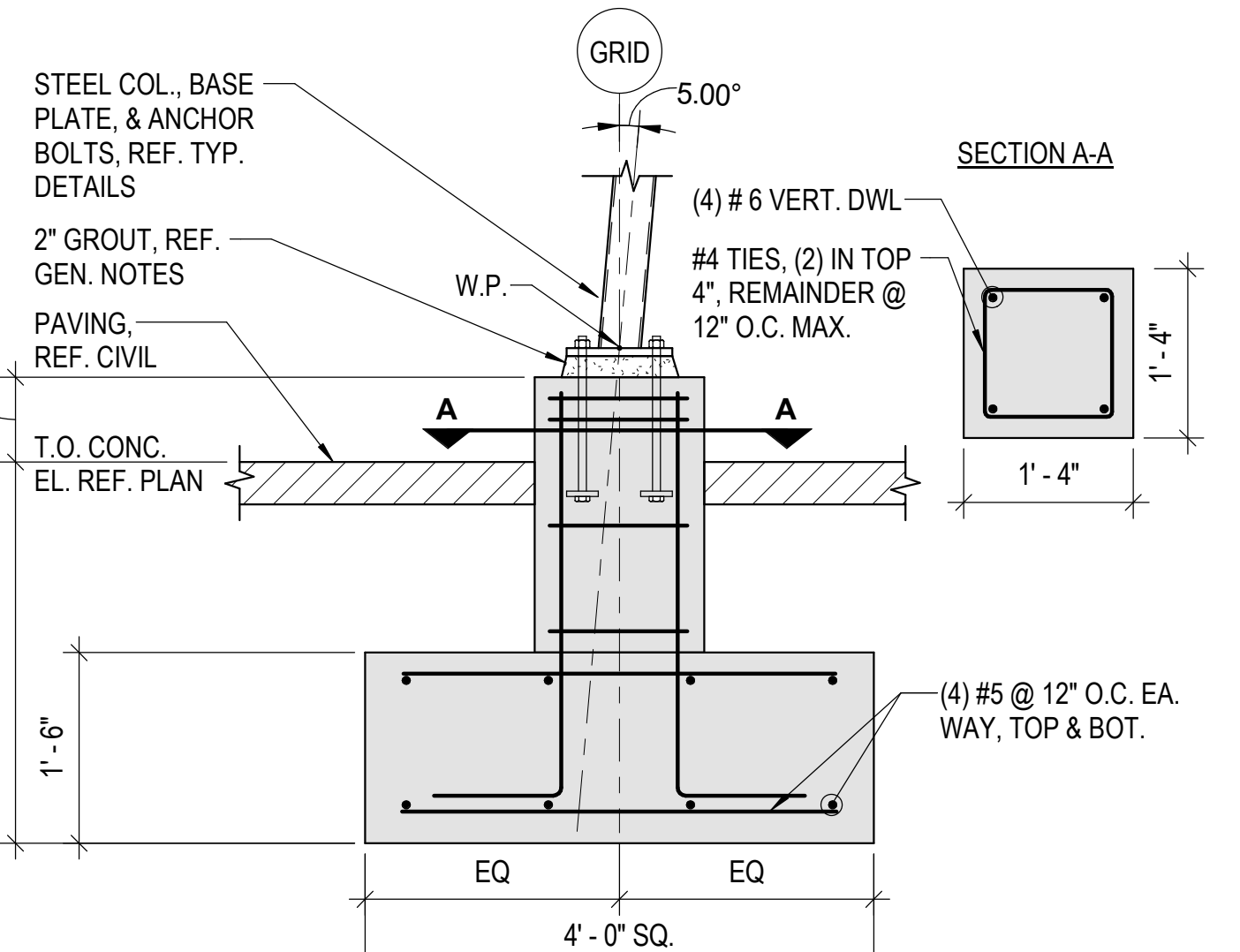
3 CONT. FTG. AT 8" CMU WALL
3/4" = 1'-0"



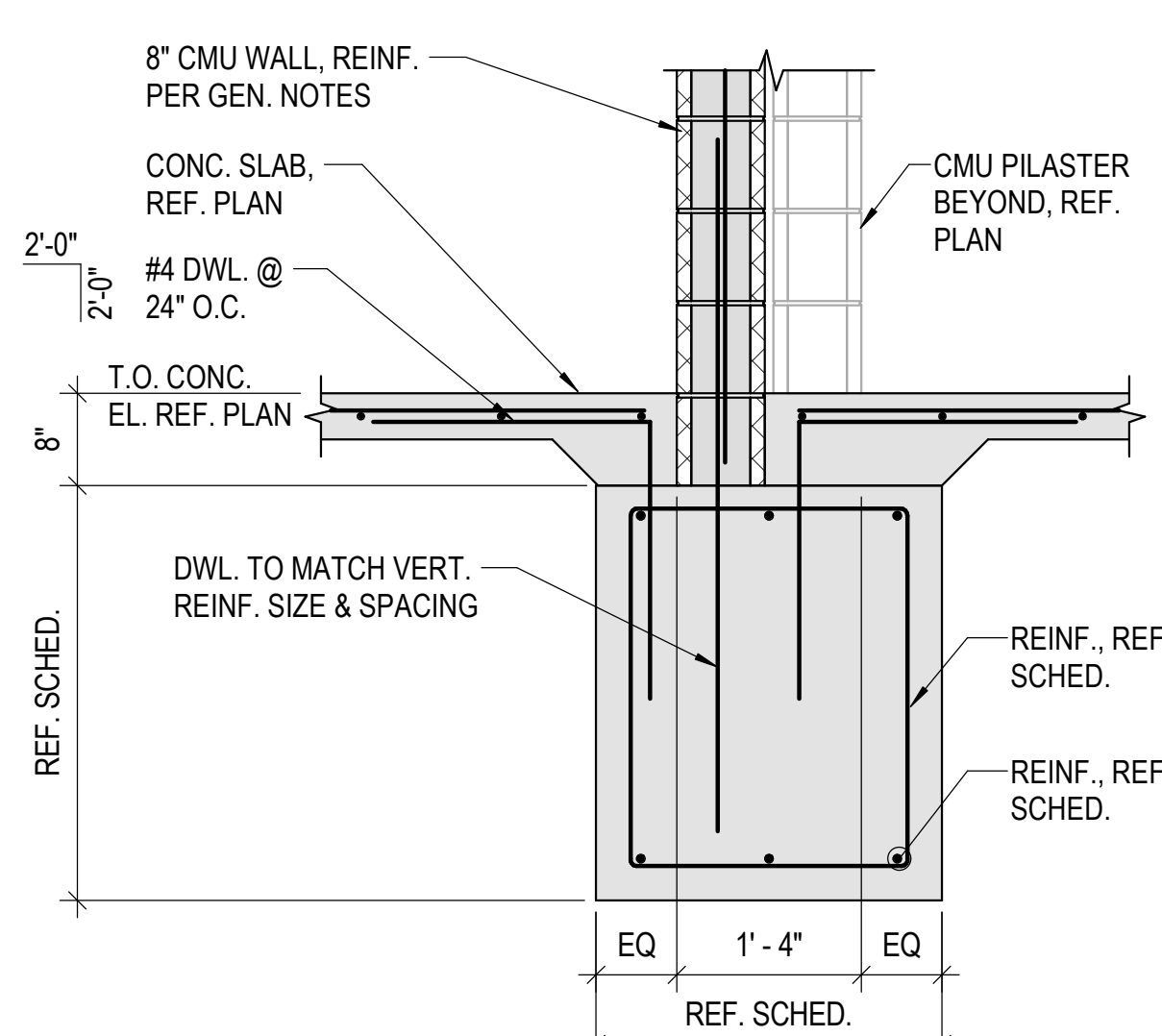
4 CONT. FTG. AT OPENING
3/4" = 1'-0"



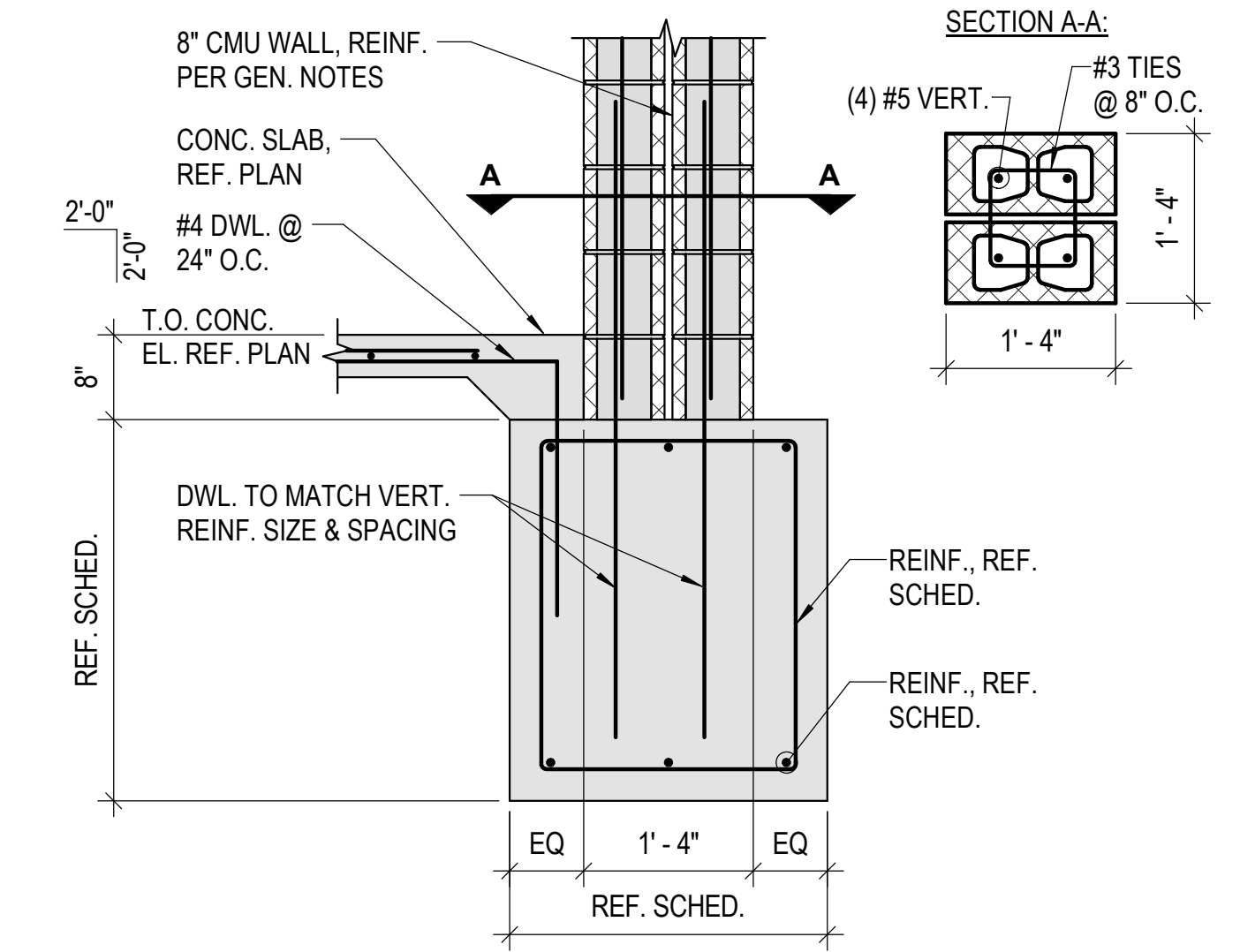
5 CONT. FTG. AT OH DOOR
3/4" = 1'-0"



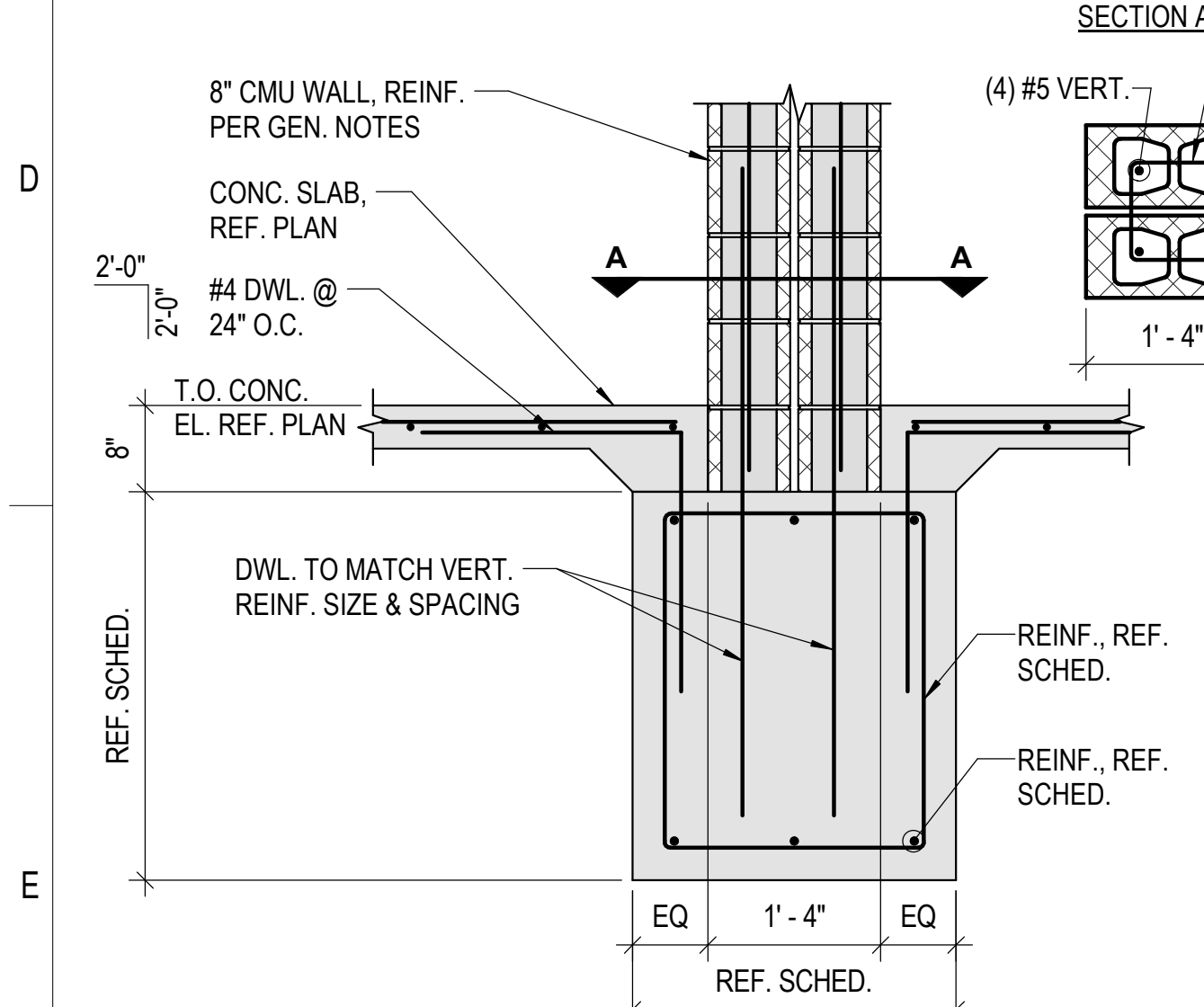
6 EXTERIOR COLUMN FTG.
3/4" = 1'-0"



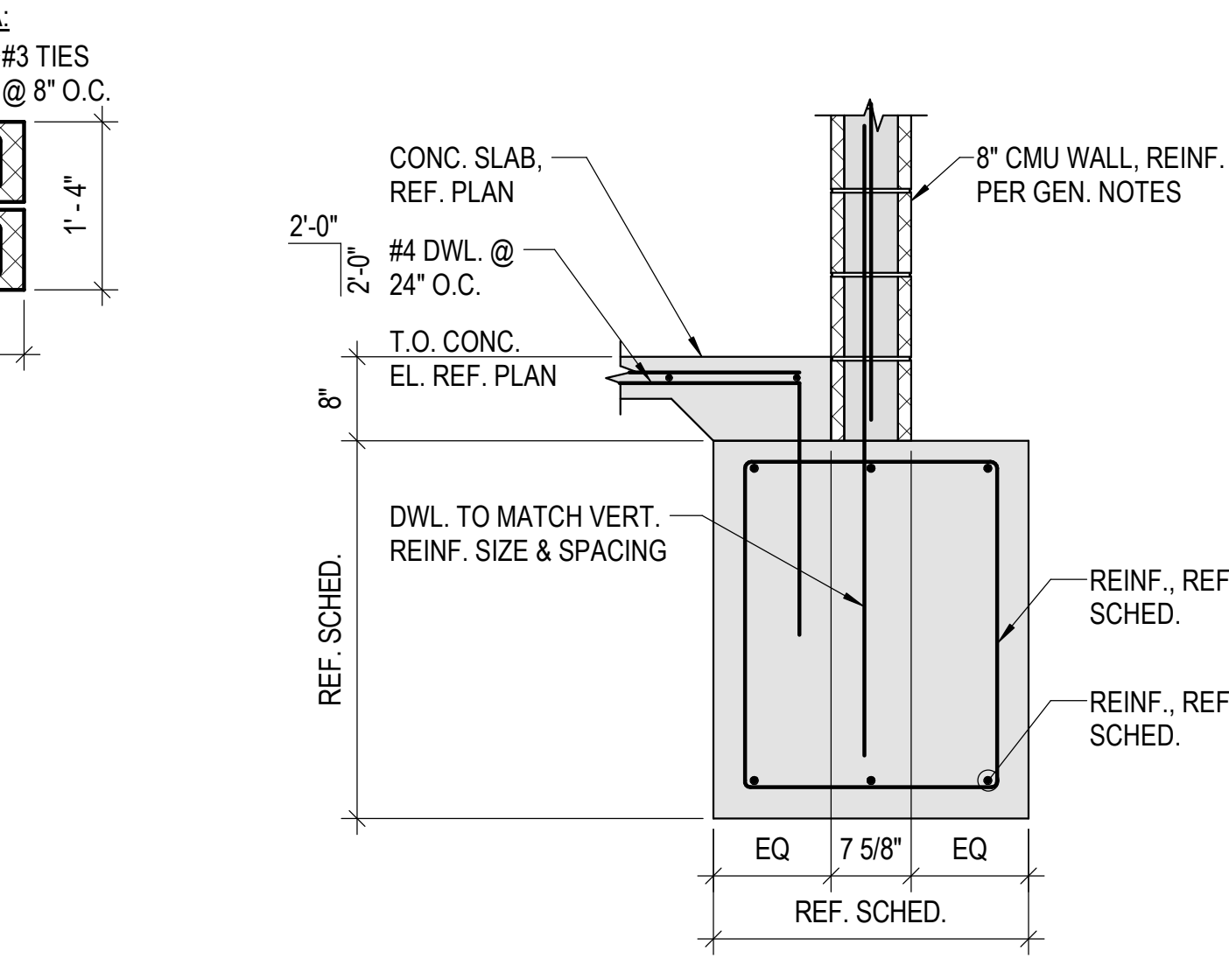
7 CONT. FTG. AT 8" CMU WALL
3/4" = 1'-0"



8 CONT. FTG. AT CMU PILASTER
3/4" = 1'-0"



9 CONT. FTG. AT CMU PILASTER
3/4" = 1'-0"



10 CONT. FTG. AT 8" CMU WALL
3/4" = 1'-0"

GRADE BEAM SCHEDULE					
MARK	WIDTH	HEIGHT	ELEVATION	REINFORCING	NOTES
GB1	2'-0"	3'-0"	99'-4"	(2) #5 CONT. TOP & BOT, #3 TIES @ 18" O.C. MAX.	
GB2	3'-0"	3'-0"	99'-4"	(3) #5 CONT. TOP & BOT, #3 TIES @ 18" O.C. MAX.	



SOUTH LAKES
SPORTS PARK
WICHITA, KS

Issue:	100% PLANS	10/18/23
JOB NO.	220008-003	
DATE	18 OCTOBER 2023	
PM	NLS	
DESIGNED BY	RST	
DRAWN BY	RST	
CHECKED BY	WAG	
FOUNDATION DETAILS		