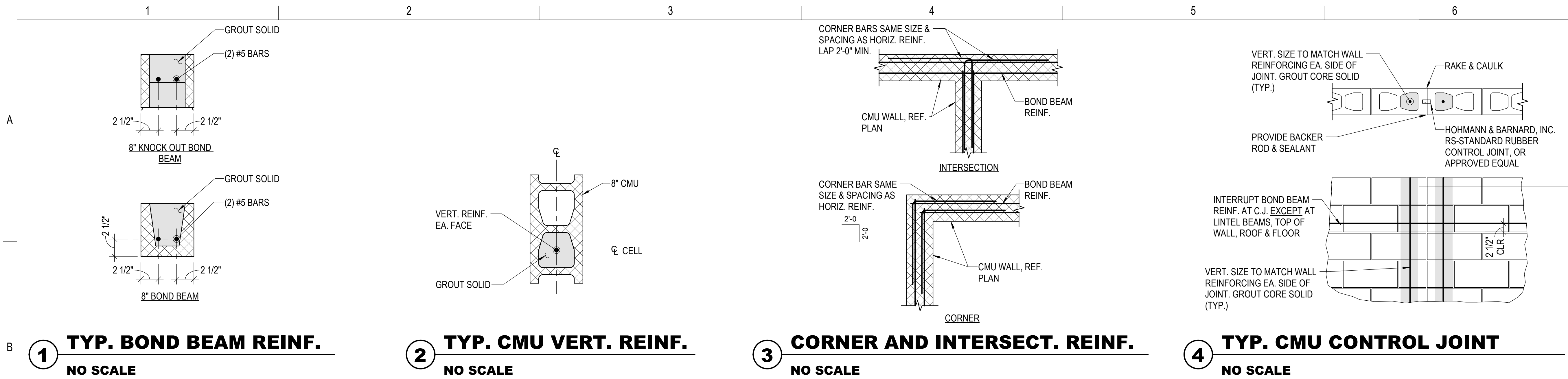


10/18/2023 4:09:55 PM Autodesk Docs://220008-001 - South Lakes Pickleball Complex/220008-001_STRUCT_R22.rvt

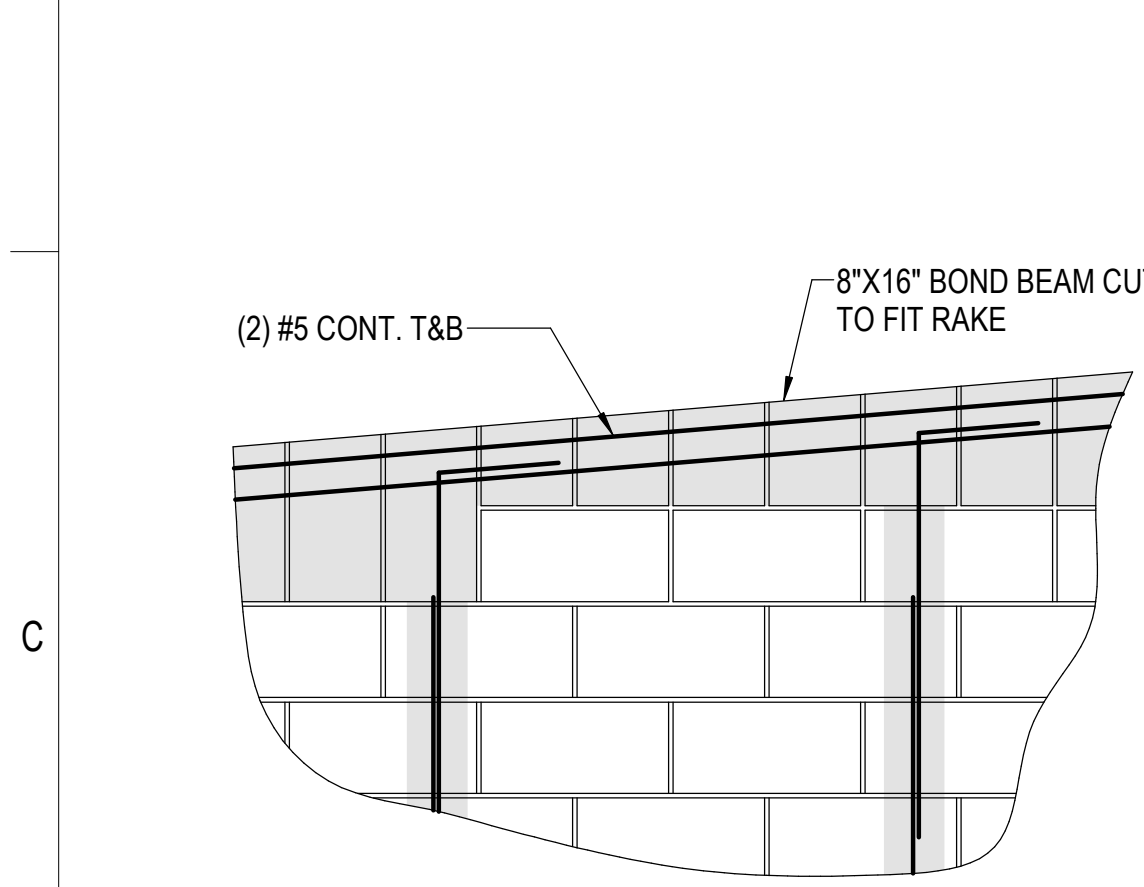


1 TYP. BOND BEAM REINF.
NO SCALE

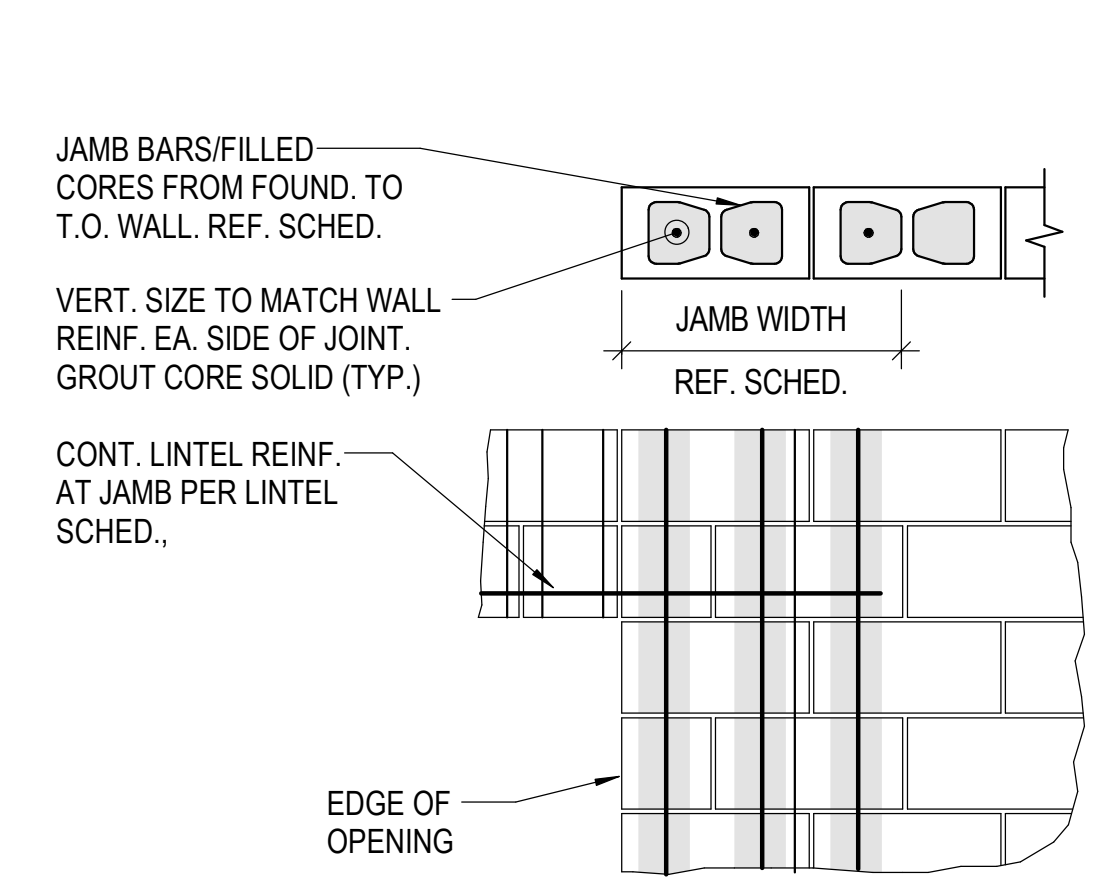
2 TYP. CMU VERT. REINF.
NO SCALE

3 CORNER AND INTERSECT. REINF.
NO SCALE

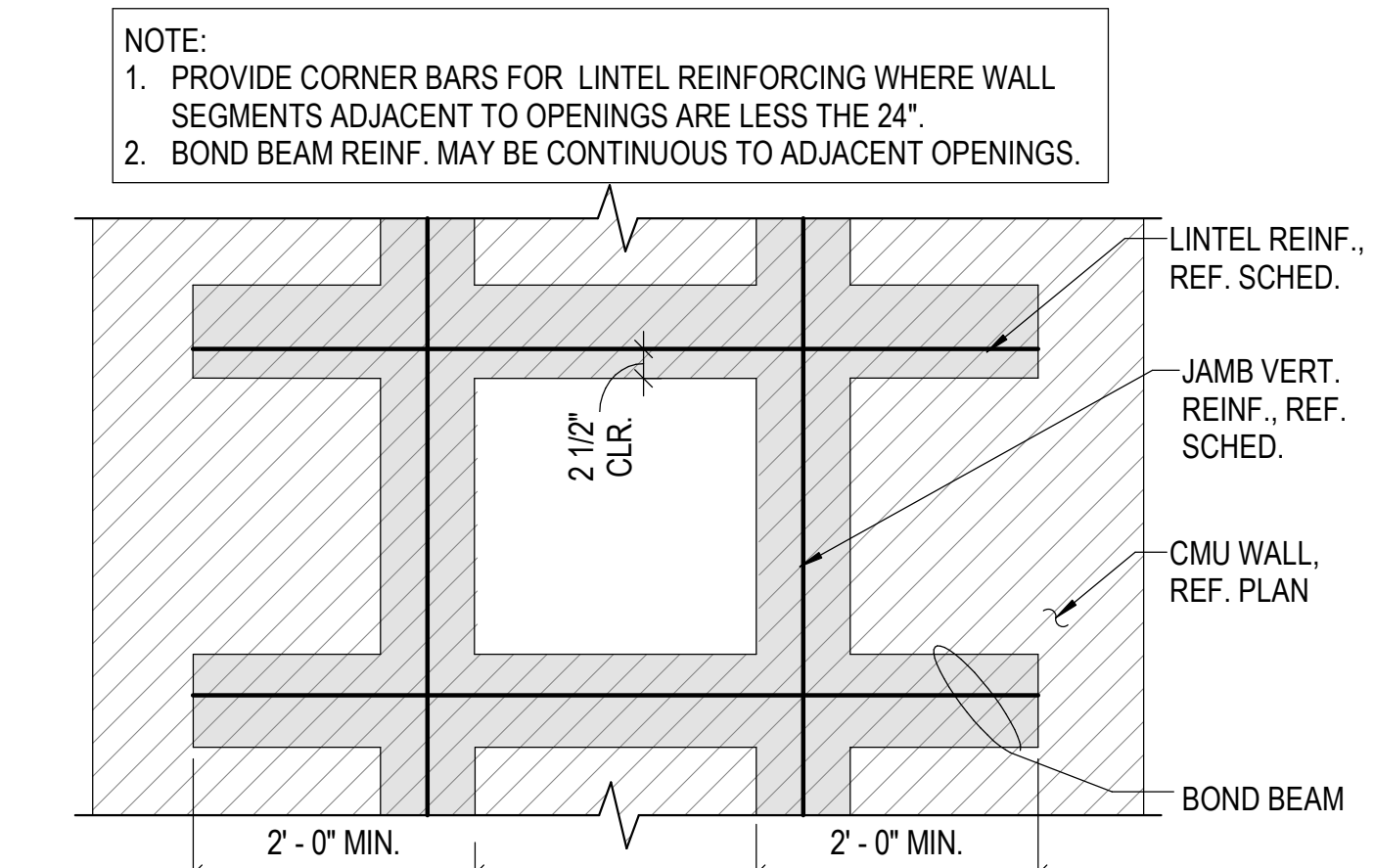
4 TYP. CMU CONTROL JOINT
NO SCALE



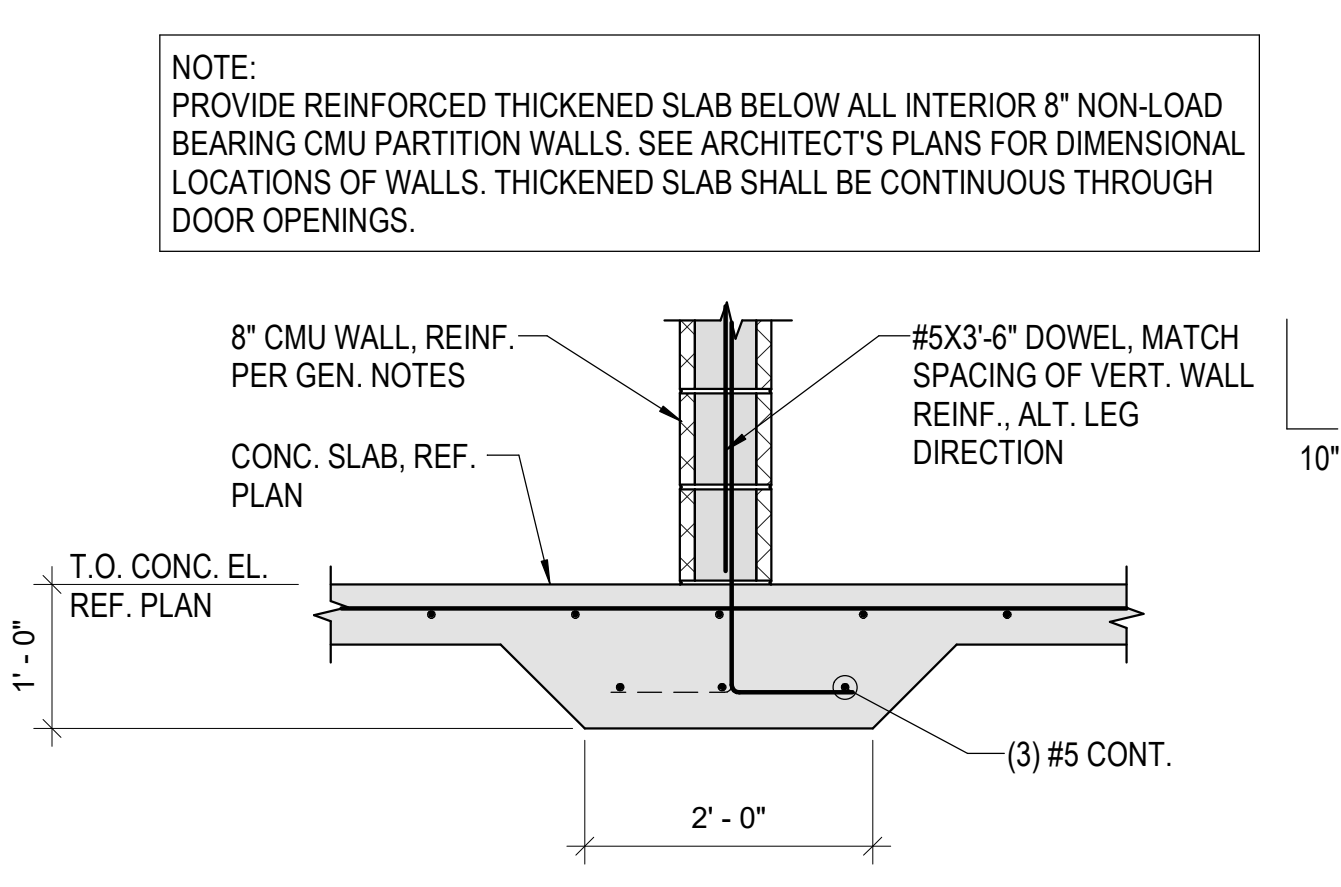
5 TYP. CMU WALL RAKE DETAIL
NO SCALE



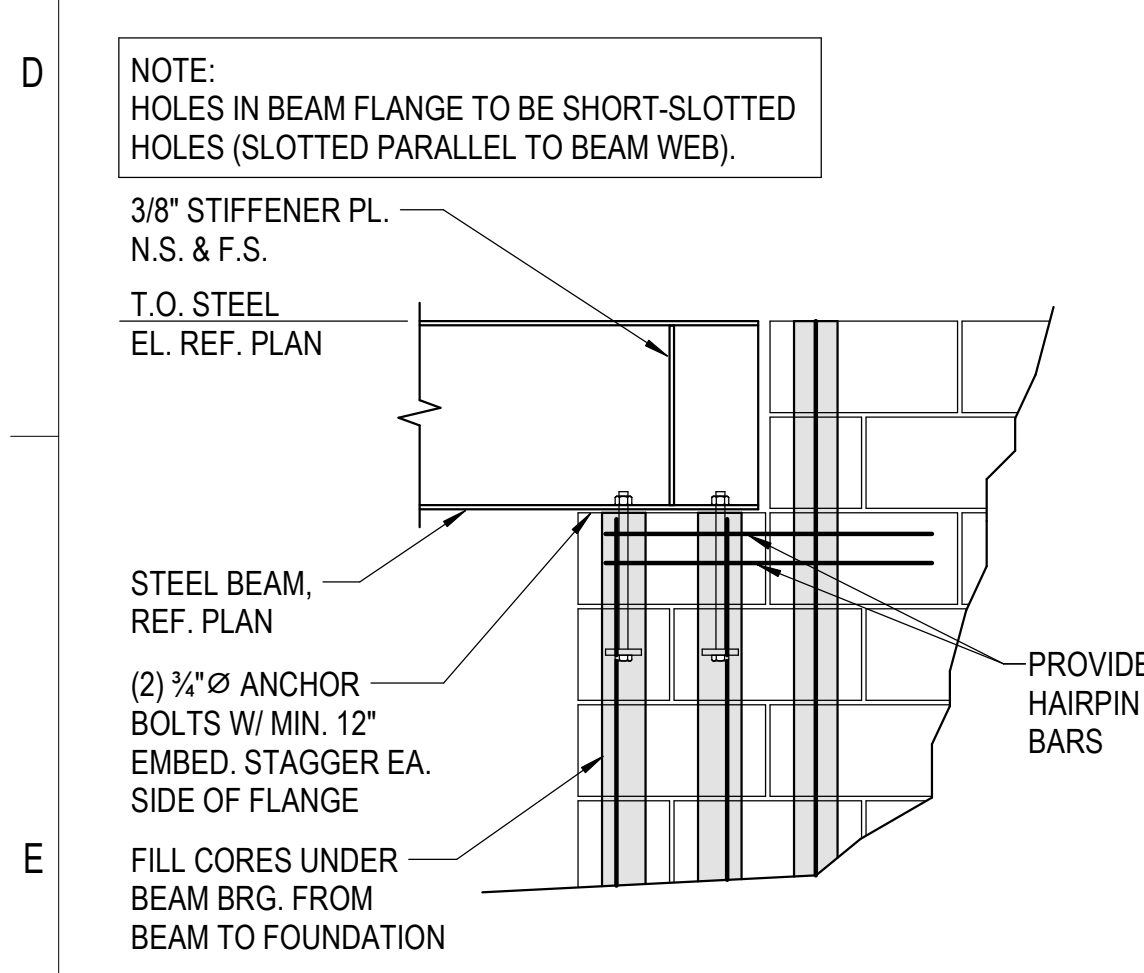
6 TYP. CMU JAMB DETAIL
NO SCALE



7 TYP. CMU OPENING REINF.
NO SCALE



8 TYP. NON-LOAD BRG. CMU FTG.
NO SCALE



9 TYP. STEEL BEAM BRG. (16")
NO SCALE

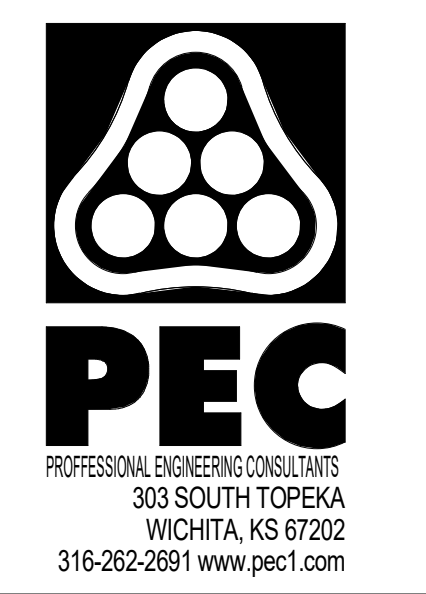
CMU LINTEL AND JAMB SCHEDULE					
MARK	SECTION	LINTEL SIZE AND REINF.	JAMB SIZE*	SILL SIZE	NOTES
L1		8"x8" W/ (2) #5 CONT.	8" W/ (1) #5 EA. CELL	8"x8" W/ (2) #5 CONT. (WHERE APPLICABLE)	
L2		8"x16" W/ (2) #5 CONT.	16" W/ (1) #5 EA. CELL	8"x16" W/ (2) #5 CONT. (WHERE APPLICABLE)	
L3		W8X24 W/ 1/2" DIA. X 0'-4" HD. STUDS @ 16" O.C.	16" W/ (1) #5 EA. CELL	8"x16" W/ (2) #5 CONT. (WHERE APPLICABLE)	REF. STEEL BEAM BRG. DETAIL 9/S601

*JAMB CELLS SHALL BE FULL HEIGHT ADJACENT TO BEAM BEARING (WHERE OCCURS)

LINTELS NOT CALLED OUT ON PLANS SHALL BE:

OPENING WIDTH < 3' - 4"	LINTEL 8" DEEP CMU BOND BEAM W/ 2 - #5 CONT. & 8" BRG. EA. END
> 3' - 4", < 7' - 4"	16" DEEP CMU BOND BEAM W/ 2 - #5 CONT. TOP & BOT. & 16" BRG. EA. END

10 CMU LINTEL AND JAMB SCHEDULE
NO SCALE



SOUTH LAKES SPORTS PARK WICHITA, KS

Issue:		
100% PLANS		10/18/23
JOB NO.	220008-003	
DATE	18 OCTOBER 2023	
PM	NLS	
DESIGNED BY	RST	
DRAWN BY	RST	
CHECKED BY	WAG	

TYPICAL CMU DETAILS

S601