

GENERAL NOTES:

- The Contractor shall comply with all applicable safety regulations. All construction shall be completed following current City Standard Specifications and Special Provisions.
- Contractor will be required to provide notice to utility companies a minimum of seventy-two (72) hours prior to any excavation, as follows:

Kansas One-Call 687-2470

The Contractor must notify the following in case of an emergency:

AT&T	1-800-246-8464
Black Hills Energy	1-800-694-8989
City of Wichita Water & Sewer	1-316-219-8921
City of Wichita Stormwater	1-316-268-4090
City of Wichita Traffic	1-316-268-4034
Cox Communications	1-888-249-3530
Kansas Gas Service	1-888-482-4950
Energy	1-800-544-4857

- Utility service lines, poles, etc. are to be adjusted as necessary by others prior to construction unless the plans specifically call for their adjustment by the Contractor or unless the plans specifically identify a utility to be adjusted by its owner during construction. Existing utilities and their location, as shown on the plans, represent the best information obtainable for design. The Contractor will be required to work around existing utilities within the right-of-way which do not conflict with proposed construction.

- Rubble from the removal of miscellaneous structures and excess excavation which is to be wasted shall be disposed of on sites to be provided by the Contractor. These sites shall be approved by the Engineer as to suitability, appearance and site location. Locations, in the opinion of the Engineer, that will leave an unsightly appearance will not be approved. All disposal sites must be approved by the Kansas Department of Health and Environment. Material either stockpiled or disposed of in a flood plain will require a Kansas State Board of Agriculture permit. Any material dumped in waters of the United States or wetlands is subject to U.S. Corps. of Engineers permitting regulations. Any material buried or stockpiled beyond approved construction limits will require additional archaeological investigations unless buried in a previously approved borrow location.

- Trees and shrubs in public right-of-way which are in direct conflict with proposed new construction shall be removed by the Contractor with the City Engineer's approval. Trees and shrubs which are not in direct conflict with proposed new construction shall be saved and protected from damage.

- The Contractor shall give all property owners and/or tenants of developed property abutting the construction of this project a minimum of ten (10) days notice prior to start of construction.

- The Contractor shall be responsible for preserving property irons. The Contractor will be required to re-establish any property irons which are damaged or destroyed by his construction operations. Such irons shall be re-established by a licensed land surveyor in accordance with state laws.

- All elevations shown are NAVD88.

- All stubs and capped pipes shall be located with green plastic tape in the same manner as risers.

- Connecting to Existing Manholes:
Prior to laying sewer lines using existing stubs in existing manholes, the Contractor shall expose and verify the elevation, grade and alignment of existing stubs and notify the Engineer of any deviation from the plans. Where the stub is unusable due to elevation grade or alignment, the Contractor shall remove the stub and plug the hole, and reshape the existing manhole invert to provide smooth flow. Where connection to an existing manhole that does not have an existing stub, the Contractor shall core cut into existing manhole wall to make connection using approved water stop gasket, and reshape the existing manhole invert to provide smooth flow. The cost of connect to existing manholes is incidental to the project.

- Contractor shall limit the extent of trench open overnight and weekends to less than 50 feet.

- Contractor shall provide positive drainage away from all manhole covers.

- The Contractor shall prevent any construction debris from entering the existing sanitary sewer during construction.

- The Contractor shall protect from damage and support existing utilities through construction as approved by the utility owner and the Engineer at the contractor's expense.

- Contractor shall grade around exposed manholes at a 1:1 slope. Manholes set lower than existing grade shall have a 9" berm constructed around manhole to prevent infiltration into sanitary sewer system. Cost of dirt, labor, equipment, etc. to be incidental to cost of manhole. Easements shall be graded with the SWD project as part of the mass grading plan.

- All areas disturbed during construction are to be seeded as follows:

Seed -- Rye grass; 5 lbs./1000 Sq. Ft.

All costs associated with seeding including mobilization, preparation of ground, seeding, fertilizing, mulching, etc. shall be included in the L.S. bid item "Seeding".

- All existing and proposed erosion control measures including silt fencing, erosion control mat, straw bales, inlet barriers, and const. entrance shall be maintained throughout construction by the contractor and until project is accepted by the City of Wichita. The on-site engineer shall complete weekly reports on the status of erosion control measures. The contractor shall be required to comply with maintenance and/or replacement of erosion control measures as determined by the on-site engineer until project is accepted by City of Wichita. Maintenance and/or replacement of erosion control measures to be paid by L.S. bid item "Maintain Existing BMPs".

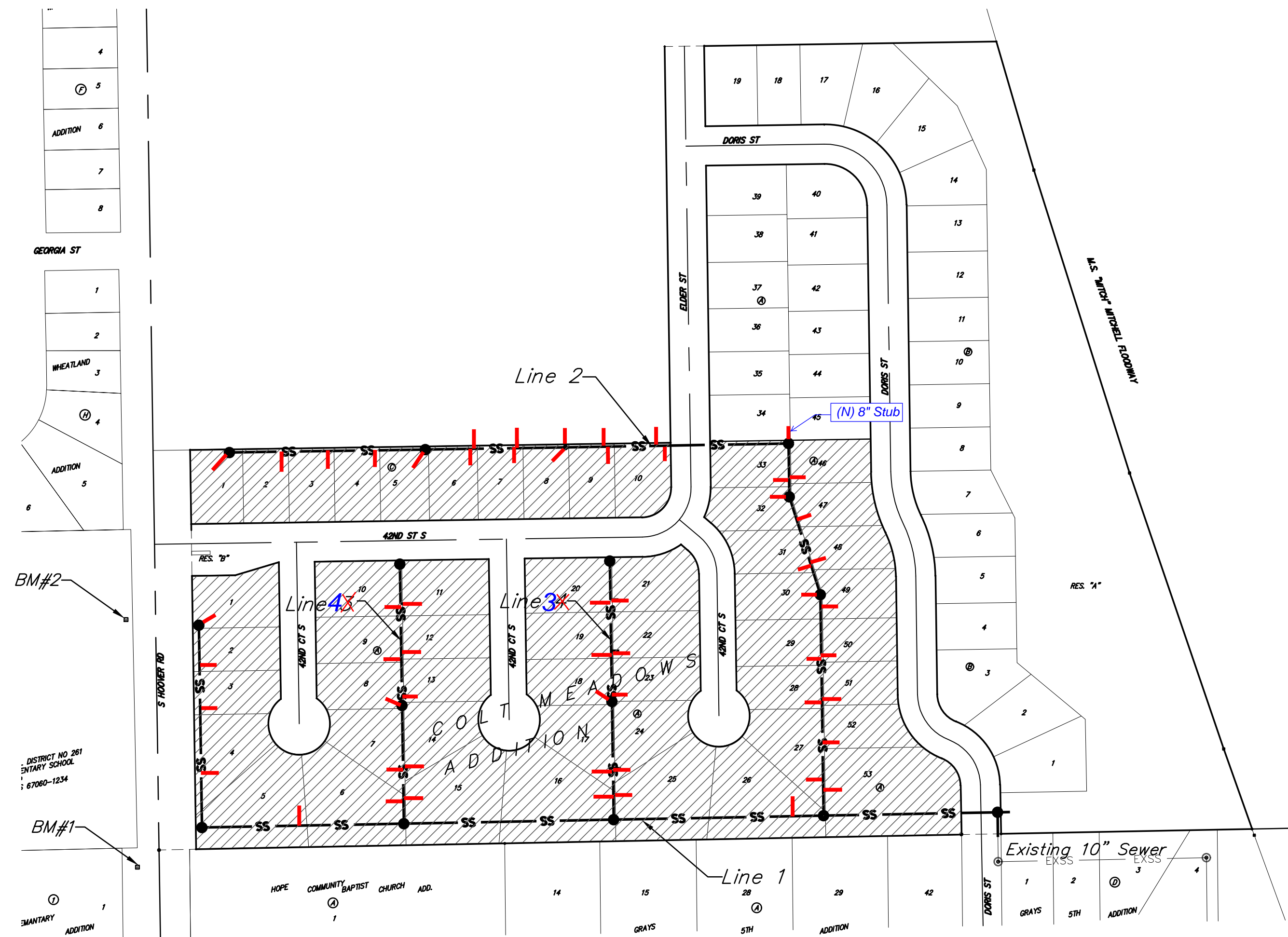
- All excess excavation shall remain on-site and shall be stockpiled or spread at a location determined by the engineer.

- The developer for this project is Colt Meadows 1 LLC, Miles D. Millsbaugh, Manager.

Benchmarks

BM #1: TOP OF 1 1/2" ALUMINUM MKEC DISC SOUTH SIDE OF FIELD ENTRANCE. 35' WEST OF HOOVER ROAD. 17' NNE OF POWER POLE. 28' SOUTH AND 35' WEST OF NE CORNER, SE1/4, SEC. 15, T28S, R1W. ELEV. = 1313.55 NAVD88

BM #2: CROSS CUT TOP OF CURB NORTH SIDE OF NORTH CIRCLE DRIVE TO OATVILLE ELEMENTARY. 3' WEST OF FIRE HYDRANT. 7' EAST OF FENCE CORNER. 373' NORTH AND 48' WEST OF NE CORNER, SE1/4, SEC. 15, T28S, R1W. ELEV. = 1315.78 NAVD88



DISTRICT NO. 261
SANITARY SCHOOL
67060-1234

BM#1

BM#2

SANITARY ADDITION

SANITARY SEWER IMPROVEMENTS

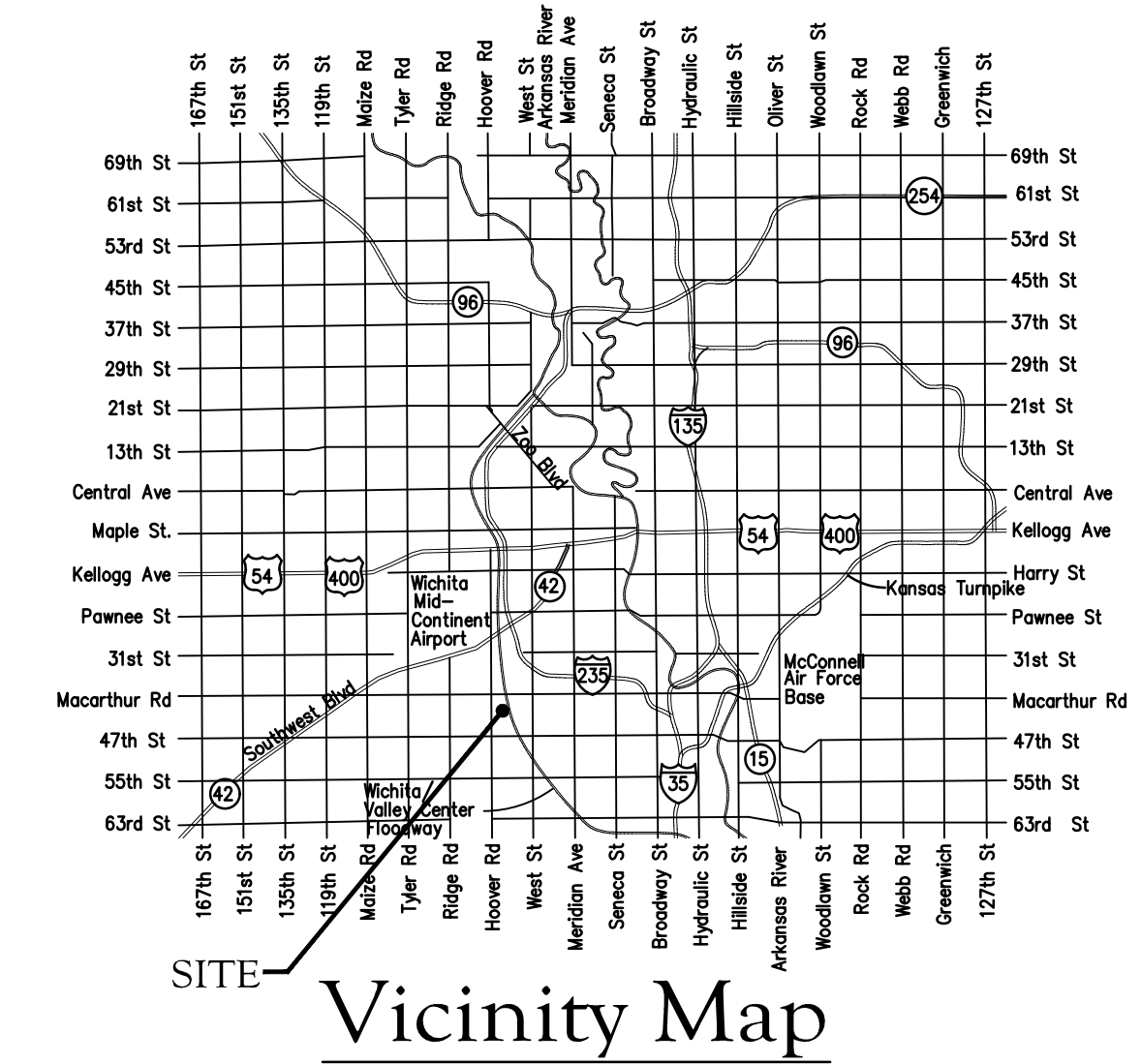
to serve

COLT MEADOWS ADDITION - Ph. 1

CITY OF WICHITA, KANSAS

Gary Janzen, P.E. City Engineer
Project Number 468-2022-010931
Org Code 47267422
Munis Number E2091

Nowak Construction - Contractor
S. Lowe - City of Wichita, Field Project Engineer
E. Flores - City of Wichita, Inspector
As-built
Stubs & Risers
Release Date (for connection purposes only): 12/1/2023
Completion Date:
pdf: apr 12/4/2023



Sheet Index

Title Sheet	1
Line 1	2-4
Line 2	5-6
Line 3	7
Line 4	8
Erosion Control Plan	9
Precast SS Manhole Detail	10
Manhole Frame & Cover Detail	11
Vertical Riser Detail	12
Erosion Control BMP Details	13-17
Coordinate Sheet	18
Copy of Plat	19



January 9, 2023

Benefit District

BAUGHMAN COMPANY
315 Ellis St. Wichita, KS 67211 316-262-7271
BaughmanCo.com

E:\Projects\Colt Meadows Addition - 21-01-P622(Engineering)\Phase 1\Sewer 22-04-ET (64)\Sewer.dwg



Construction Engineering Division
 1801 S. McLean Blvd., Suite B
 Wichita KS, 67213
 (316) 268-4027

Sanitary Sewer Riser Table

Project Name: WDS_SWD #489_SS Improvements to serve Colt Meadows Addition
Project Location: South of Macarthur Rd, east of Hoover Rd
Project No: 448-2022-010929_458-2022-085500_468-2022-010931
MUNIS No: E2093/47119222_E2092/47310822_E2091/47267422
Contractor: Nowak Construction Co., Inc.
Inspector: Eddie Flores

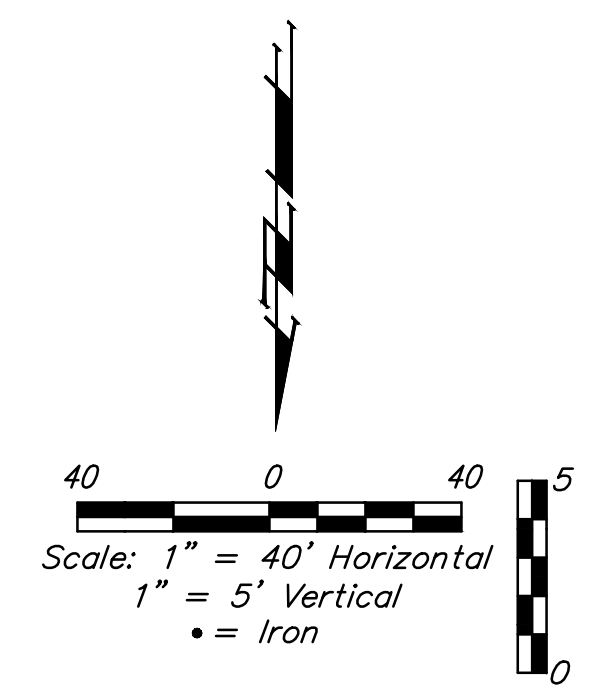
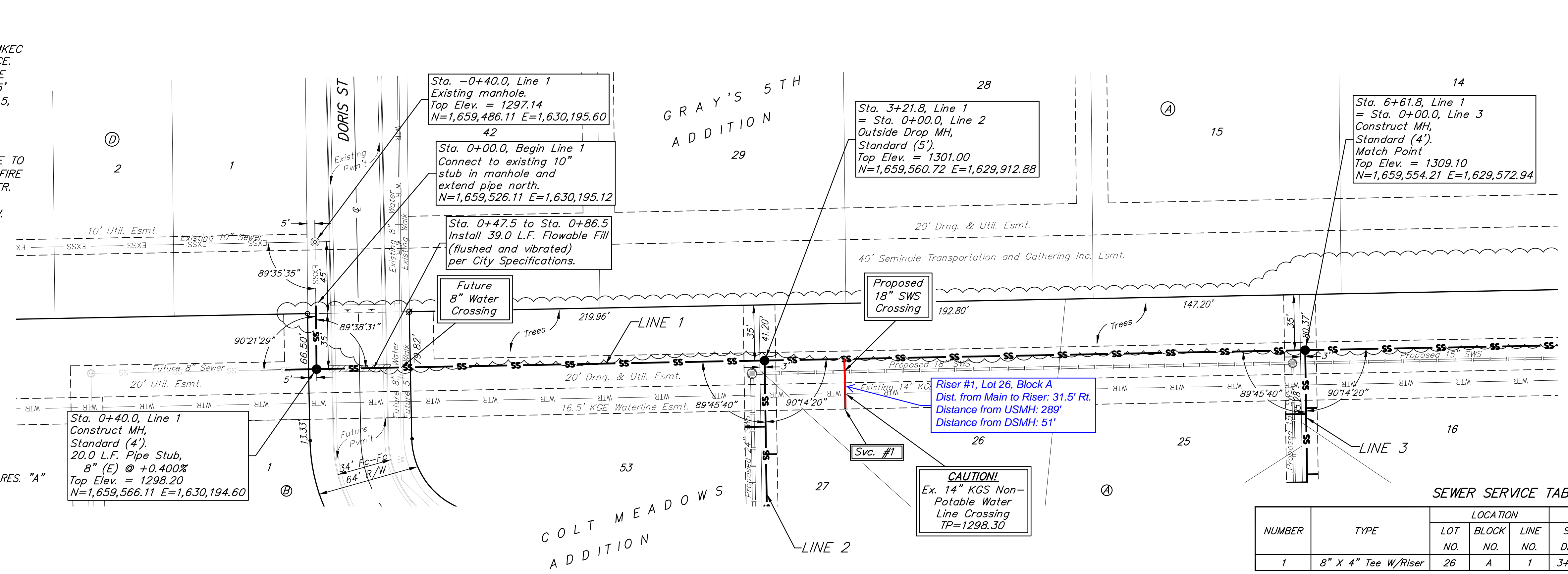
Riser No.	Line No.	Station	Distance from Main to Riser (Lt./Rt.)	Vertical Offset	Distance from		Comment
					Upstream MH	Downstream MH	
1	1	3+72	31.5 Rt	6.5	289'	51'	
2	1	11+70	31.5 Rt	10.5	158'	169'	
3	1	14+16	15 Rt	10	240'	88'	
4	1	15+21	15 Rt	10.5	135'	193'	
5	1	15+91	15 Rt	10.5	65'	263'	
6	1	16+56	18.3 Rt	10.5	0 MH	328'	At MH
7	2	0+41	13' Rt	9.5	317'	41'	
8	2	0+59	7' Lt	9.5	299'	59'	
9	2	1+18	13' Rt	10.5	240'	118'	
10	2	1+83	7' Lt	10.5	175'	183'	
11	2	1+88	13' Rt	10.5	170'	188'	
12	2	2+53	7' Lt	9.5	105'	253'	
13	2	2+58	13' Rt	9.5	100'	258'	
14	2	3+38	13' Rt	8.5	20'	338'	
15	2	3+58	7' Lt	8.5	0 MH	358'	At MH
16	2	4+18	7' Lt	9	106'	60'	
17	2	4+23	13' Rt	9	101'	65'	
18	2	4+96	13' Rt	9	28'	138'	
19	2	5+24	7' Lt	9	0 MH	166'	At MH
20	2	5+50	7' Lt	8	60'	26'	
21	2	5+55	13' Rt	8	55'	31'	
22	2	8+11	5 Lt	7	160'	201'	
23	2	8+24	14.6 Rt	7	147'	214'	
24	2	9+02	5 Lt	7.5	69'	292'	
25	2	9+09	14.8 Rt	7.5	62'	299'	
26	2	9+71	6.1 Lt	8	0' MH	361'	At MH
27	2	9+71	15 Rt	8	0' MH	361'	At MH
28	2	10+49	15 Rt	8	149'	78'	
29	2	10+54	5 Lt	8	144'	83'	
30	2	11+19	15 Rt	8	79'	148'	
31	2	11+24	5 Lt	8	74'	153'	
32	2	11+98	6.1 Lt	8.5	0 MH	227'	
33	2	12+82	5 Lt	8.5	234'	84'	
34	2	13+56	5 Lt	8	160'	158'	
35	2	14+30	5 Lt	8	86'	232'	
36	2	15+16	6.1 Lt	8	0' MH	318'	At MH
37	3	0+36	7 Lt	9.5	155'	36'	
38	3	0+40	13 Rt	9.5	151'	40'	

BENCHMARKS:
 BM #1: TOP OF 1 1/2" ALUMINUM MKEC DISC SOUTH SIDE OF FIELD ENTRANCE. 35' WEST OF HOOVER ROAD. 17' NNE OF POWER POLE. 28' SOUTH AND 35' WEST OF NE CORNER, SE1/4, SEC. 15, T28S, R1W. ELEV. = 1313.55 NAVD88

BM #2: CROSS CUT TOP OF CURB NORTH SIDE OF NORTH CIRCLE DRIVE TO OATVILLE ELEMENTARY. 3' WEST OF FIRE HYDRANT. 7' EAST OF FENCE CORNER. 373' NORTH AND 48' WEST OF NE CORNER, SE1/4, SEC. 15, T28S, R1W. ELEV. = 1315.78 NAVD88

Trees in conflict with sanitary sewer construction to be removed by contractor. To be paid for as lump sum bid item "Site Clearing"

All other trees shall remain and be protected from damage during construction. Overhanging limbs shall be trimmed by the Contractor using a chain saw only as necessary for construction and with approval of the Engineer. Cost of tree trimming to be included in bid item "Site Clearing"

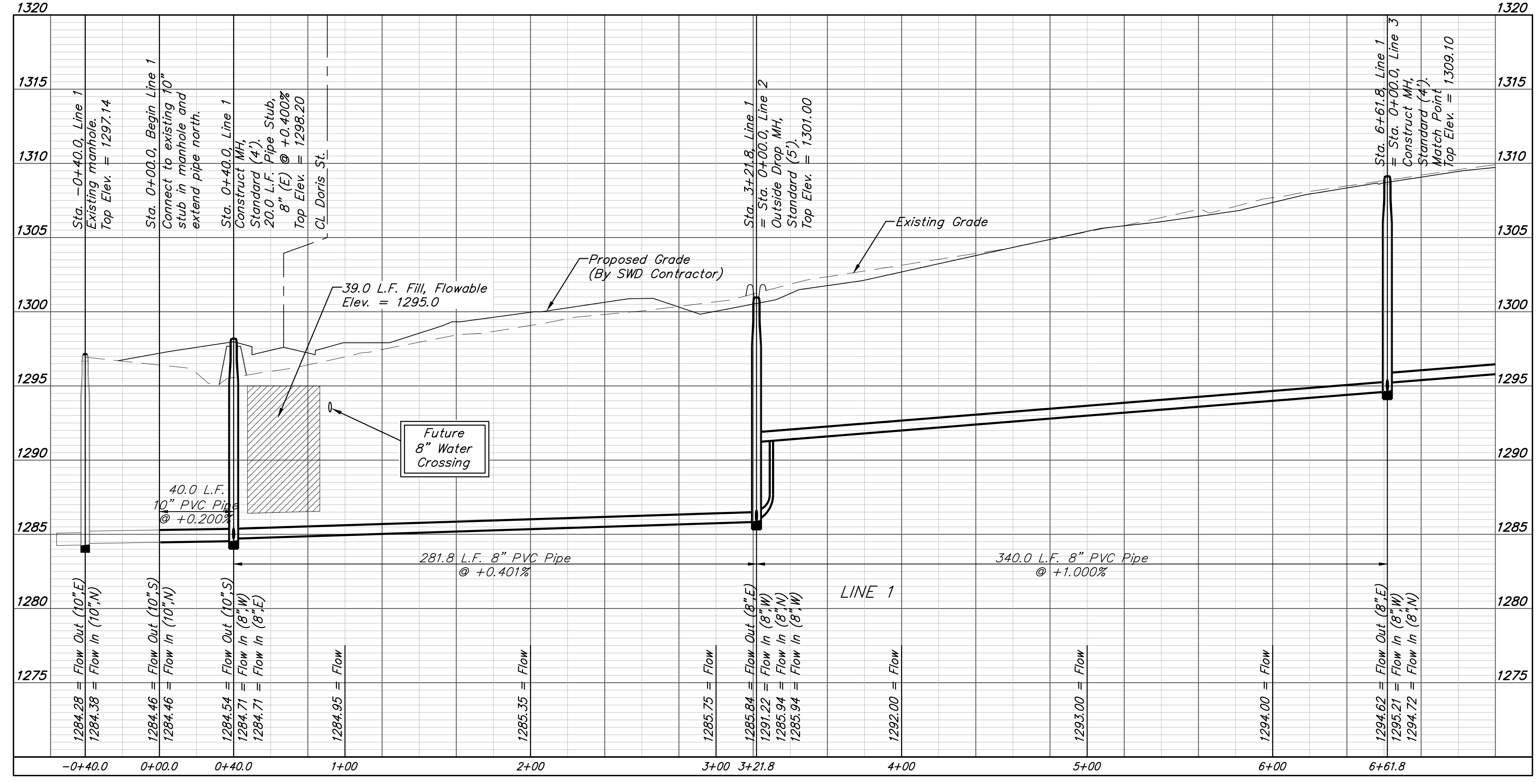


Contact Kansas Gas Service 3 weeks prior to construction to coordinate construction.

SEWER SERVICE TABLE

NUMBER	TYPE	LOCATION			FOR INFORMATION ONLY	
		LOT NO.	BLOCK NO.	LINE NO.	STATION \ DIRECTION	APPROXIMATE LENGTH 4" PIPE
1	8" X 4" Tee W/Riser	26	A	1	3+72.0/Rt.	VERTICAL: 6.5' HORIZONTAL: 31.5'

NOTE: Vertical Riser Pipe shall be extended to 2' minimum above ground water elevation and 4' maximum below proposed ground elevation.



Contractor shall verify elevation, slope and alignment of existing 10" pipe prior to construction and notify Engineer of any discrepancy.

BAUGHMAN COMPANY
 315 Ellis St.
 Wichita, KS 67211
 316-262-7271
 BaughmanCo.com

COLT MEADOWS ADD.
 Phase 1
LINE 1
 SANITARY SEWER IMPROVEMENTS
 PROJECT NUMBER:
 22-04-E164
 DESIGN: NBW DRAWN: TMS
 DATE: August 23, 2022
 SHEET OF
2 19

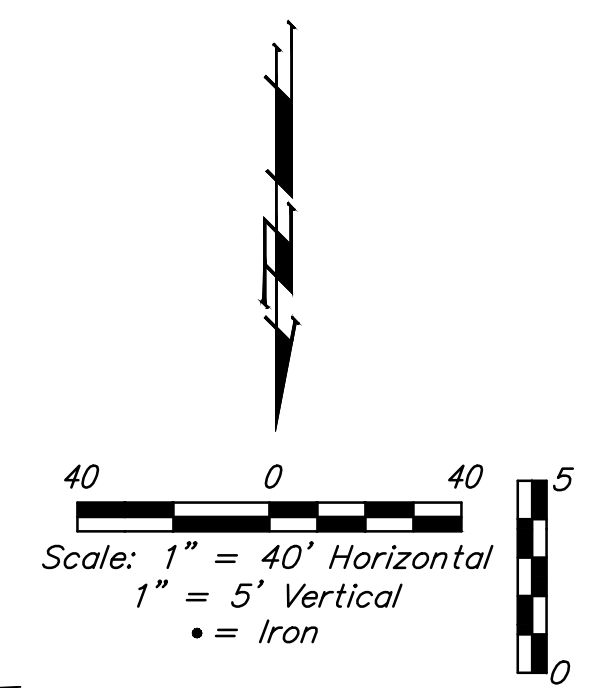
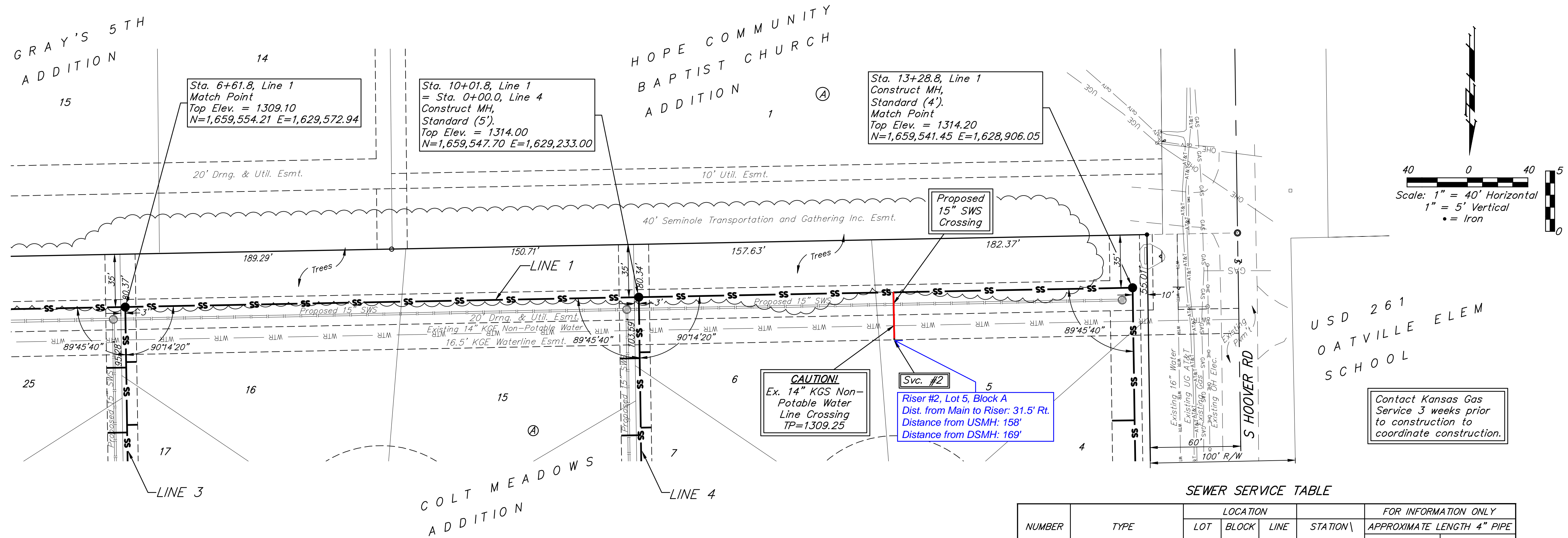
File: E:\Projects\Colt Meadows Addition_21-01-P622\Engineering\Phase 1\Sewer 22-04-E164\Sewer.dwg

BENCHMARKS:
 BM #1: TOP OF 1 1/2" ALUMINUM MKEC DISC SOUTH SIDE OF FIELD ENTRANCE. 35' WEST OF HOOVER ROAD. 17' NNE OF POWER POLE. 28' SOUTH AND 35' WEST OF NE CORNER, SE1/4, SEC. 15, T28S, R1W. ELEV. = 1313.55 NAVD88

BM #2: CROSS CUT TOP OF CURB NORTH SIDE OF NORTH CIRCLE DRIVE TO OATVILLE ELEMENTARY. 3' WEST OF FIRE HYDRANT. 7' EAST OF FENCE CORNER. 373' NORTH AND 48' WEST OF NE CORNER, SE1/4, SEC. 15, T28S, R1W. ELEV. = 1315.78 NAVD88

Trees in conflict with sanitary sewer construction to be removed by contractor. To be paid for as lump sum bid item "Site Clearing"

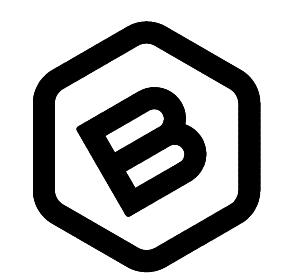
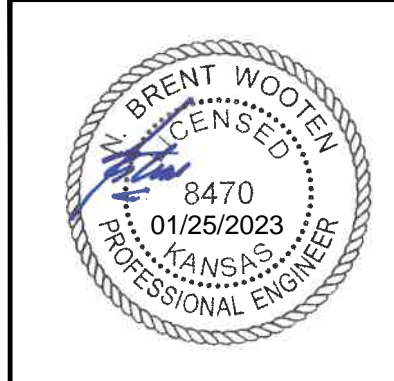
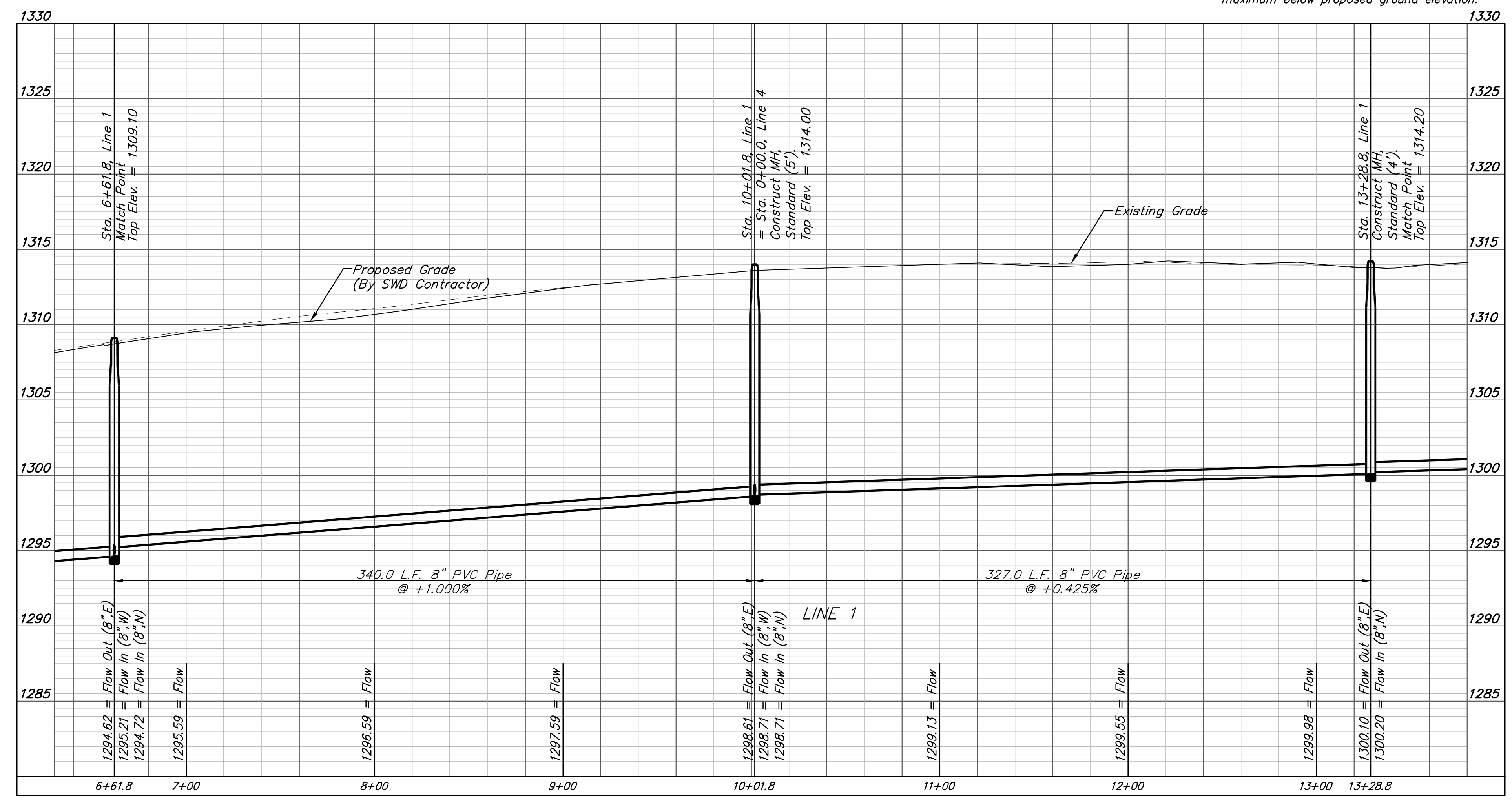
All other trees shall remain and be protected from damage during construction. Overhanging limbs shall be trimmed by the Contractor using a chain saw only as necessary for construction and with approval of the Engineer. Cost of tree trimming to be included in bid item "Site Clearing"



SEWER SERVICE TABLE

NUMBER	TYPE	LOCATION			FOR INFORMATION ONLY		
		LOT NO.	BLOCK NO.	LINE NO.	STATION \ DIRECTION	APPROXIMATE LENGTH 4" PIPE VERTICAL	HORIZONTAL
2	8" X 4" Tee W/Riser	5	A	1	11+70.4/Rt.	10.5'	31.5'

NOTE: Vertical Riser Pipe shall be extended to 2' minimum above ground water elevation and 4' maximum below proposed ground elevation.



BAUGHMAN COMPANY
 315 Ellis St.
 Wichita, KS 67211
 316-262-7271
 BaughmanCo.com

COLT MEADOWS ADD.
 Phase 1

LINE 1

SANITARY SEWER IMPROVEMENTS

PROJECT NUMBER:
 22-04-E164

DESIGN: NBW DRAWN: TMS

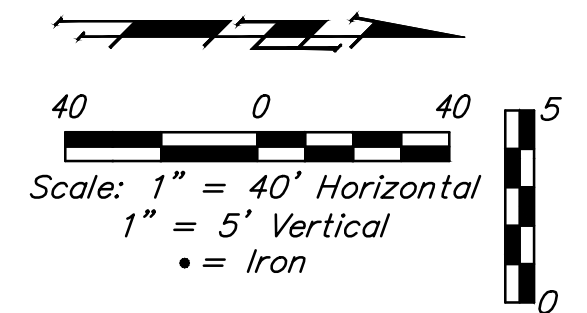
DATE: August 23, 2022

SHEET OF
3 19

File: E:\Projects\Colt Meadows Addition_21-01-P622\Engineering\Phase 1\Sewer 22-04-E164\Sewer.dwg

BENCHMARKS:
 BM #1: TOP OF 1 1/2" ALUMINUM MKEC DISC SOUTH SIDE OF FIELD ENTRANCE. 35' WEST OF HOOVER ROAD. 17' NNE OF POWER POLE. 28' SOUTH AND 35' WEST OF NE CORNER, SE1/4, SEC. 15, T28S, R1W. ELEV. = 1313.55 NAVD88

BM #2: CROSS CUT TOP OF CURB NORTH SIDE OF NORTH CIRCLE DRIVE TO OATVILLE ELEMENTARY. 3' WEST OF FIRE HYDRANT. 7' EAST OF FENCE CORNER. 373' NORTH AND 48' WEST OF NE CORNER, SE1/4, SEC. 15, T28S, R1W. ELEV. = 1315.78 NAVD88

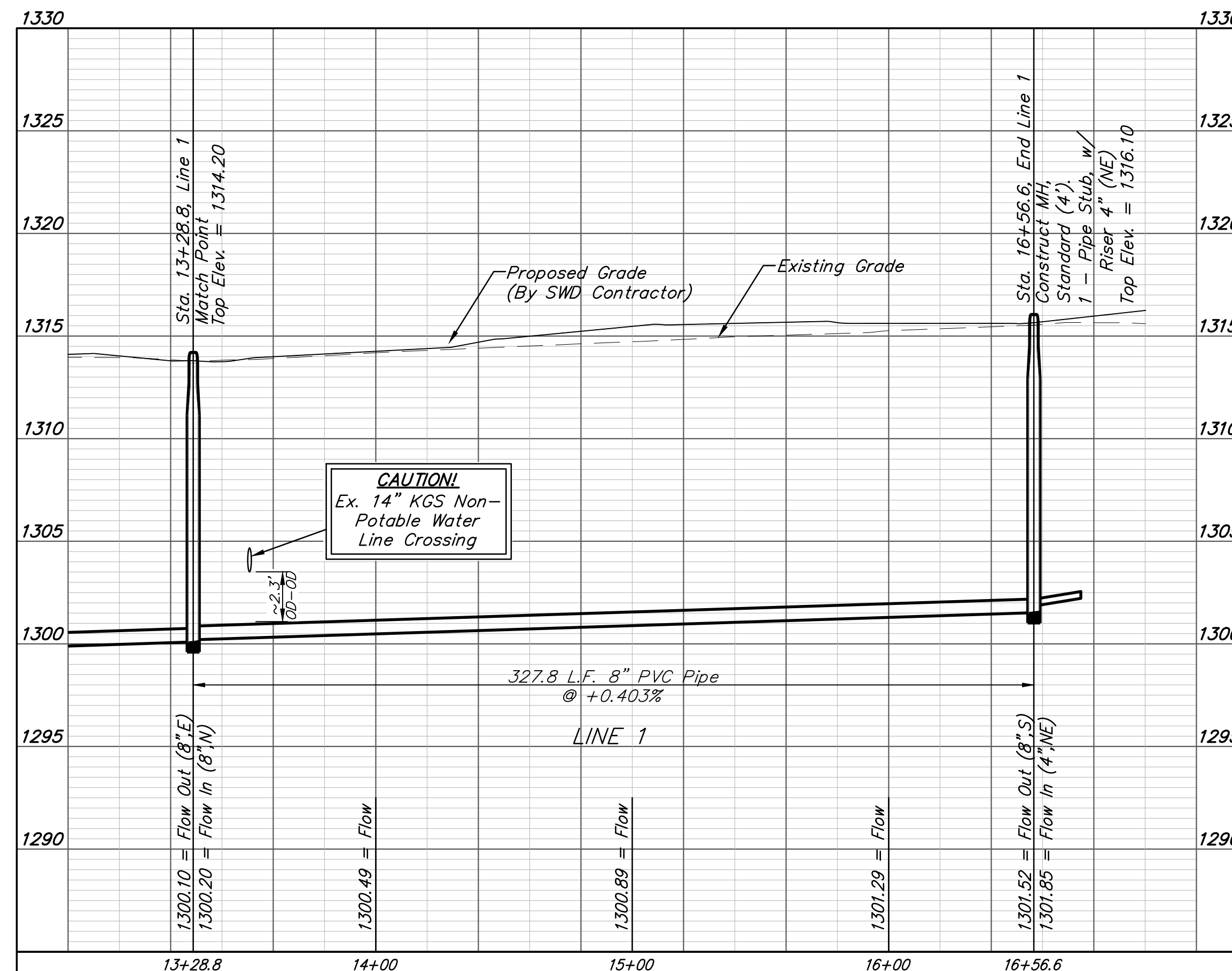
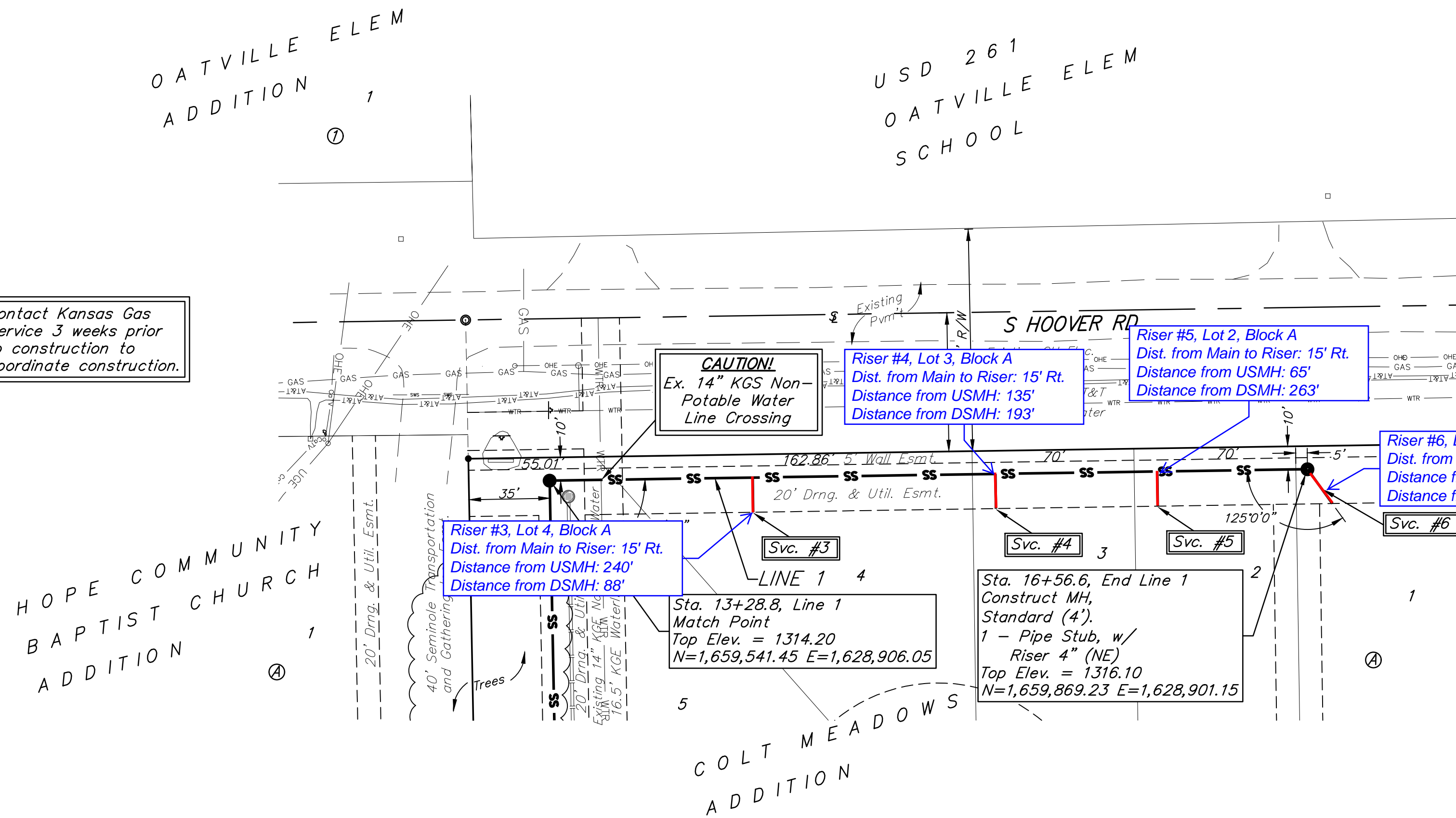


Contact Kansas Gas Service 3 weeks prior to construction to coordinate construction.

SEWER SERVICE TABLE

NUMBER	TYPE	LOCATION			STATION DIRECTION	FOR INFORMATION ONLY	
		LOT NO.	BLOCK NO.	LINE NO.		APPROXIMATE LENGTH 4" PIPE	VERTICAL
3	8" X 4" Tee W/Riser	4	A	1	14+16.6/Rt.	10.0'	15.0'
4	8" X 4" Tee W/Riser	3	A	1	15+21.6/Rt.	10.5'	15.0'
5	8" X 4" Tee W/Riser	2	A	1	15+91.6/Rt.	10.5'	15.0'
6	4" Stub W/Riser	1	A	1	16+56.6/Rt.	10.5'	18.3'

NOTE: Vertical Riser Pipe shall be extended to 2' minimum above ground water elevation and 4' maximum below proposed ground elevation.



BAUGHMAN COMPANY
 315 Ellis St.
 Wichita, KS 67211
 316-262-7271
 BaughmanCo.com

COLT MEADOWS ADD.
 Phase 1
LINE 1
 SANITARY SEWER IMPROVEMENTS
 PROJECT NUMBER:
 22-04-E164
 DESIGN: NBW DRAWN: TMS
 DATE: August 23, 2022
 SHEET 4 OF 19

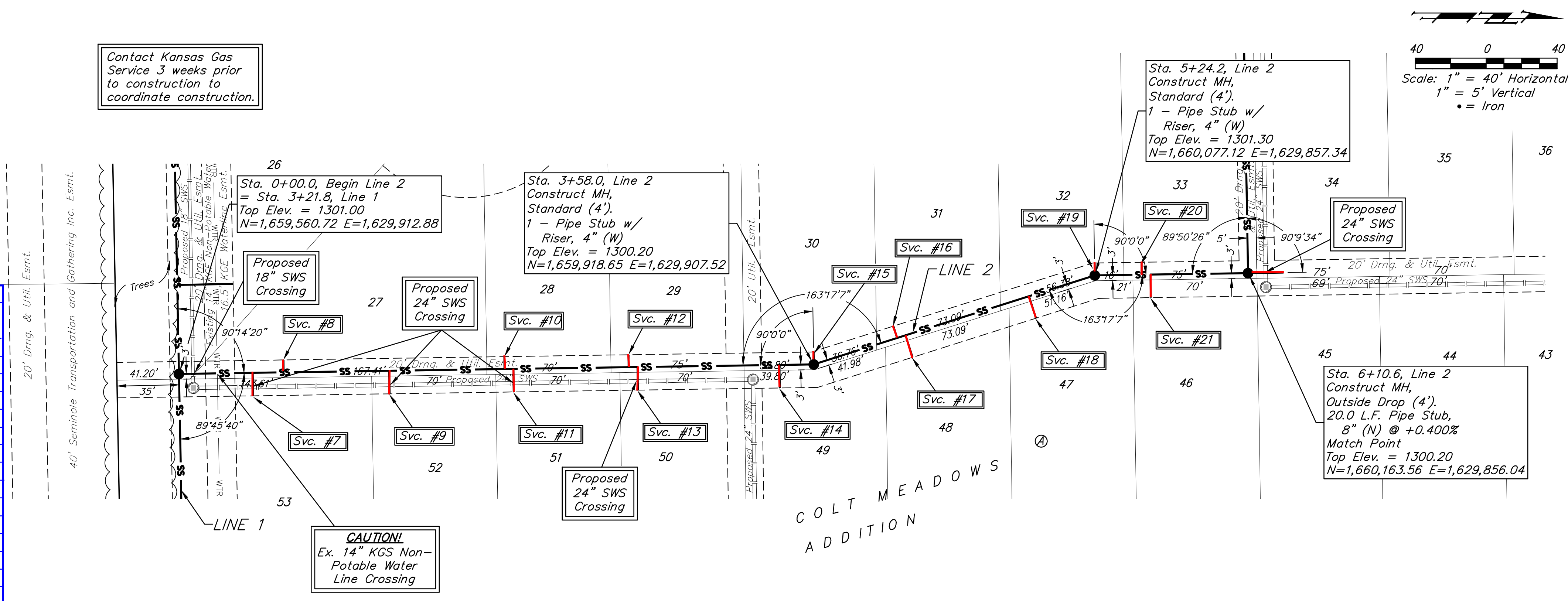
File: E:\Projects\Colt Meadows Addition_21-01-P622\Engineering\Phase 1\Sewer 22-04-E164\Sewer.dwg

BENCHMARKS:
 BM #1: TOP OF 1 1/2" ALUMINUM MKEC DISC SOUTH SIDE OF FIELD ENTRANCE. 35' WEST OF HOOVER ROAD. 17' NNE OF POWER POLE. 28' SOUTH AND 35' WEST OF NE CORNER, SE1/4, SEC. 15, T28S, R1W. ELEV. = 1313.55 NAVD88

BM #2: CROSS CUT TOP OF CURB NORTH SIDE OF NORTH CIRCLE DRIVE TO OATVILLE ELEMENTARY. 3' WEST OF FIRE HYDRANT. 7' EAST OF FENCE CORNER. 373' NORTH AND 48' WEST OF NE CORNER, SE1/4, SEC. 15, T28S, R1W. ELEV. = 1315.78 NAVD88

Riser Number	Distance from Main to Riser (Lt./Rt.)	Distance from	
		Upstream MH	Downstream MH
7	13' Rt.	317'	41'
8	7' Lt.	299'	59'
9	13' Rt.	240'	118'
10	7' Lt.	175'	183'
11	13' Rt.	170'	188'
12	7' Lt.	105'	253'
13	13' Rt.	100'	258'
14	13' Rt.	20'	338'
15	7' Lt.	@ mh	358'
16	7' Lt.	106'	60'
17	13' Rt.	101'	65'
18	13' Rt.	28'	138'
19	7' Lt.	@ mh	166'
20	7' Lt.	60'	26'
21	13' Rt.	55'	31'

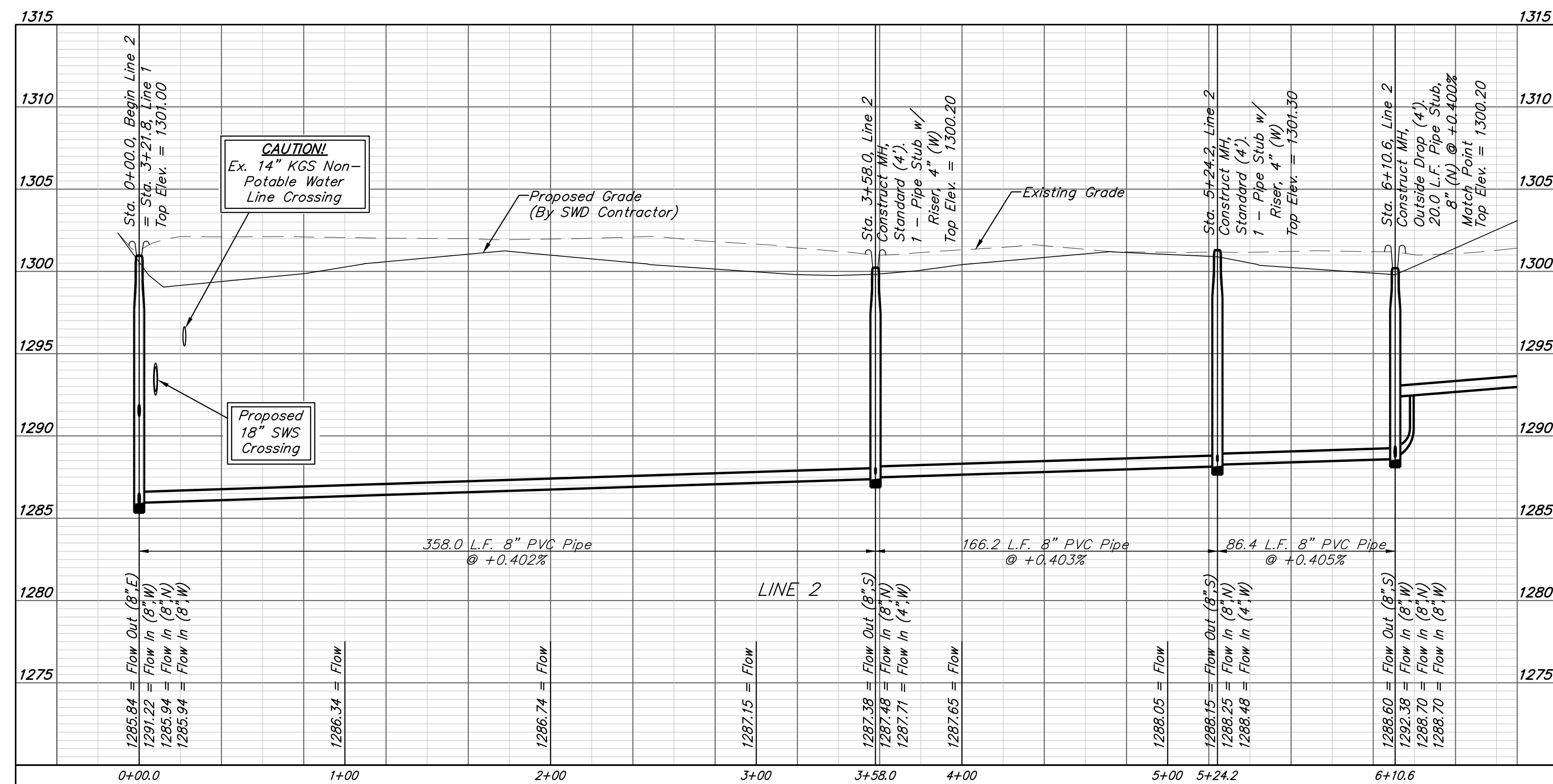
Contact Kansas Gas Service 3 weeks prior to construction to coordinate construction.



SEWER SERVICE TABLE

NUMBER	TYPE	LOCATION			FOR INFORMATION ONLY		
		LOT NO.	BLOCK NO.	LINE NO.	STATION \ DIRECTION	APPROXIMATE LENGTH 4" PIPE VERTICAL	HORIZONTAL
7	8" X 4" Tee W/Riser	53	A	2	0+41.6/Rt.	9.5'	13.0'
8	8" X 4" Tee W/Riser	27	A	2	0+59.0/Lt.	9.5'	7.0'
9	8" X 4" Tee W/Riser	52	A	2	1+18.6/Rt.	10.5'	13.0'
10	8" X 4" Tee W/Riser	28	A	2	1+83.6/Lt.	10.5'	7.0'
11	8" X 4" Tee W/Riser	51	A	2	1+88.6/Rt.	10.5'	13.0'
12	8" X 4" Tee W/Riser	29	A	2	2+53.6/Lt.	9.5'	7.0'
13	8" X 4" Tee W/Riser	50	A	2	2+58.6/Rt.	9.5'	13.0'
14	8" X 4" Tee W/Riser	49	A	2	3+38.6/Rt.	8.5'	13.0'
15	4" Stub W/Riser	30	A	2	3+58.0/Lt.	8.5'	7.0'
16	8" X 4" Tee W/Riser	31	A	2	4+18.3/Lt.	9.0'	7.0'
17	8" X 4" Tee W/Riser	48	A	2	4+23.3/Rt.	9.0'	13.0'
18	8" X 4" Tee W/Riser	47	A	2	4+96.3/Rt.	9.0'	13.0'
19	4" Stub W/Riser	32	A	2	5+24.2/Lt.	9.0'	7.0'
20	8" X 4" Tee W/Riser	33	A	2	5+50.6/Lt.	8.0'	7.0'
21	8" X 4" Tee W/Riser	46	A	2	5+55.6/Rt.	8.0'	13.0'

NOTE: Vertical Riser Pipe shall be extended to 2' minimum above ground water elevation and 4' maximum below proposed ground elevation.



BRENT WOOLLEN
 LICENSED PROFESSIONAL ENGINEER
 8470 01/25/2023
 KANSAS

BAUGHMAN COMPANY
 315 Ellis St.
 Wichita, KS 67211
 316-262-7271
 BaughmanCo.com

COLT MEADOWS ADD.
 Phase 1

LINE 2

SANITARY SEWER IMPROVEMENTS

PROJECT NUMBER:
 22-04-E164

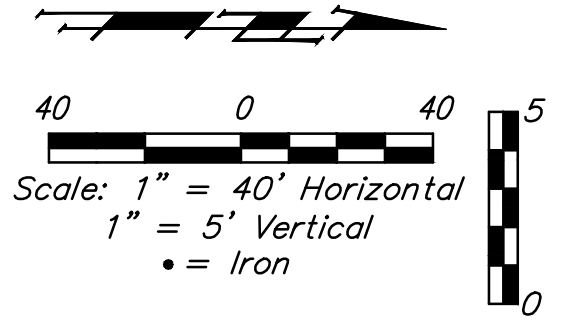
DESIGN: NBW DRAWN: TMS
 DATE: August 23, 2022

SHEET OF
5 19

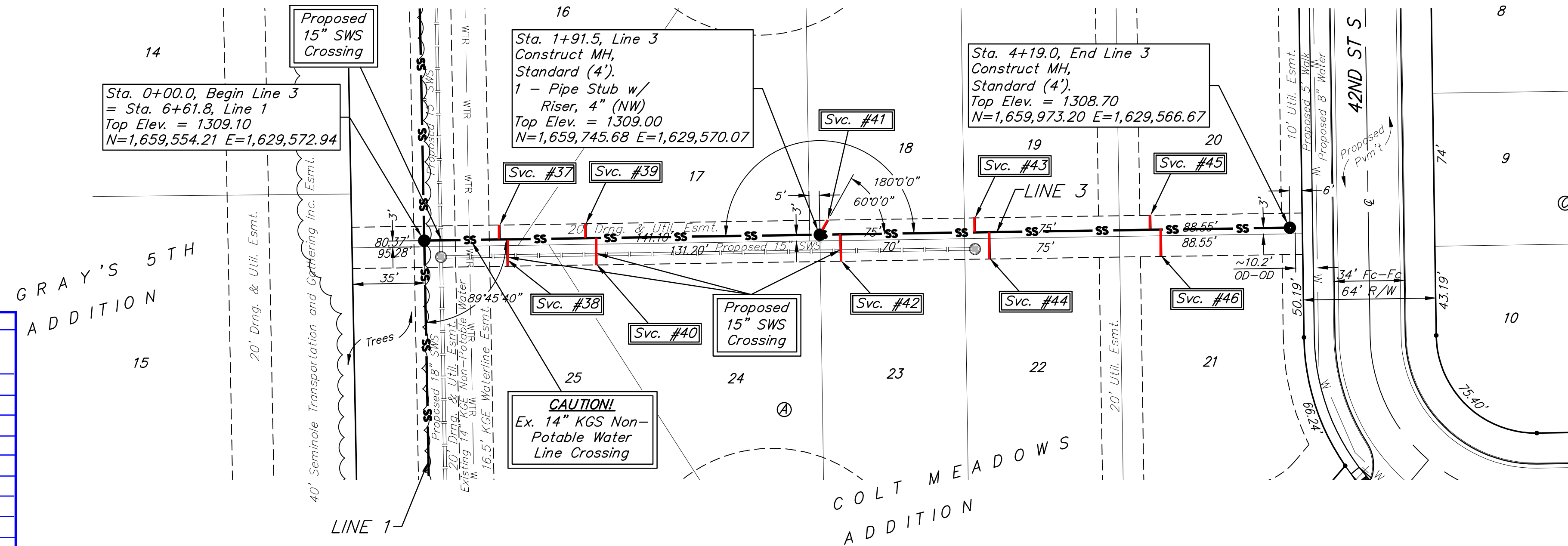
BENCHMARKS:
 BM #1: TOP OF 1 1/2" ALUMINUM MKEC DISC SOUTH SIDE OF FIELD ENTRANCE. 35' WEST OF HOOVER ROAD. 17" NNE OF POWER POLE. 28' SOUTH AND 35' WEST OF NE CORNER, SE1/4, SEC. 15, T28S, R1W. ELEV. = 1313.55 NAVD88

BM #2: CROSS CUT TOP OF CURB NORTH SIDE OF NORTH CIRCLE DRIVE TO OATVILLE ELEMENTARY. 3' WEST OF FIRE HYDRANT. 7' EAST OF FENCE CORNER. 373' NORTH AND 48' WEST OF NE CORNER, SE1/4, SEC. 15, T28S, R1W. ELEV. = 1315.78 NAVD88

Contact Kansas Gas Service 3 weeks prior to construction to coordinate construction.



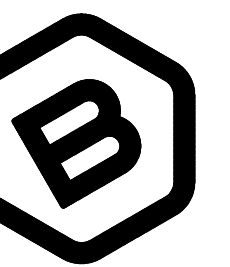
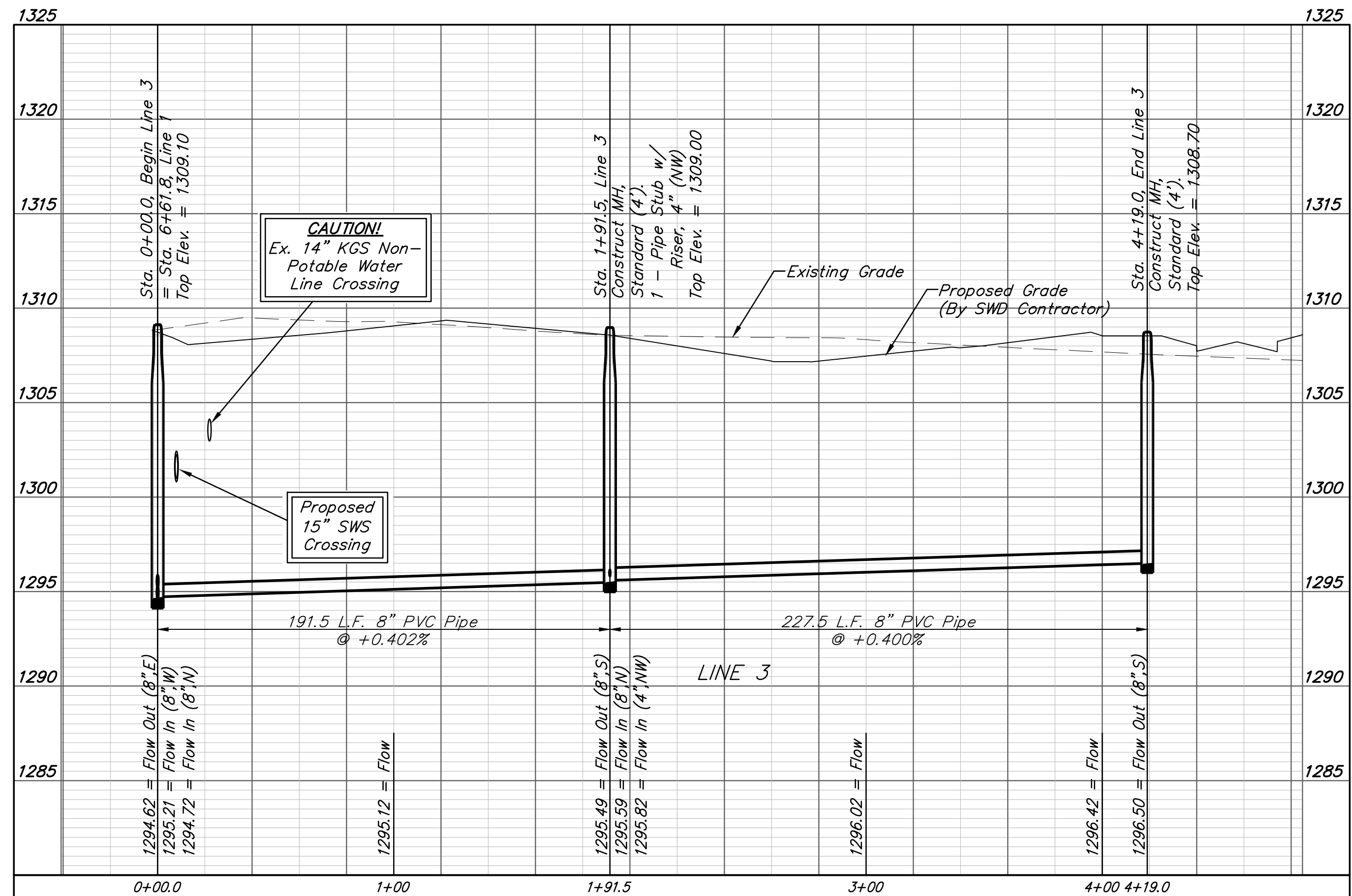
Riser Number	Distance from Main to Riser (Lt./Rt.)	Distance from	
		Upstream MH	Downstream MH
37	7' Lt.	155'	36'
38	13' Rt.	151'	40'
39	7' Lt.	113'	78'
40	13' Rt.	108'	83'
41	8' Lt.	@ mh	191'
42	13' Rt.	218'	10'
43	7' Lt.	153'	75'
44	13' Rt.	146'	82'
45	8' Lt.	68'	160'
46	13' Rt.	63'	165'



SEWER SERVICE TABLE

NUMBER	TYPE	LOCATION			FOR INFORMATION ONLY		
		LOT NO.	BLOCK NO.	LINE NO.	STATION \ DIRECTION	APPROXIMATE LENGTH 4" PIPE	
						VERTICAL	HORIZONTAL
37	8" X 4" Tee W/Riser	16	A	3	0+36.5/Lt.	9.5'	7.0'
38	8" X 4" Tee W/Riser	25	A	3	0+40.2/Rt.	9.5'	13.0'
39	8" X 4" Tee W/Riser	17	A	3	0+78.2/Lt.	10.0'	7.0'
40	8" X 4" Tee W/Riser	24	A	3	0+83.2/Rt.	10.0'	13.0'
41	4" Stub W/Riser	18	A	3	1+91.5/Lt.	9.0'	8.0'
42	8" X 4" Tee W/Riser	23	A	3	2+01.5/Rt.	9.0'	13.0'
43	8" X 4" Tee W/Riser	19	A	3	2+66.5/Lt.	8.0'	7.0'
44	8" X 4" Tee W/Riser	22	A	3	2+73.5/Rt.	8.0'	13.0'
45	8" X 4" Tee W/Riser	20	A	3	3+51.5/Lt.	8.0'	8.0'
46	8" X 4" Tee W/Riser	21	A	3	3+56.5/Rt.	8.0'	13.0'

NOTE: Vertical Riser Pipe shall be extended to 2' minimum above ground water elevation and 4' maximum below proposed ground elevation.



BAUGHMAN COMPANY

315 Ellis St.
 Wichita, KS 67211
 316-262-7271
 BaughmanCo.com

COLT MEADOWS ADD.
 Phase 1

LINE 3

SANITARY SEWER IMPROVEMENTS

PROJECT NUMBER:
 22-04-E164

DESIGN: NBW DRAWN: TMS

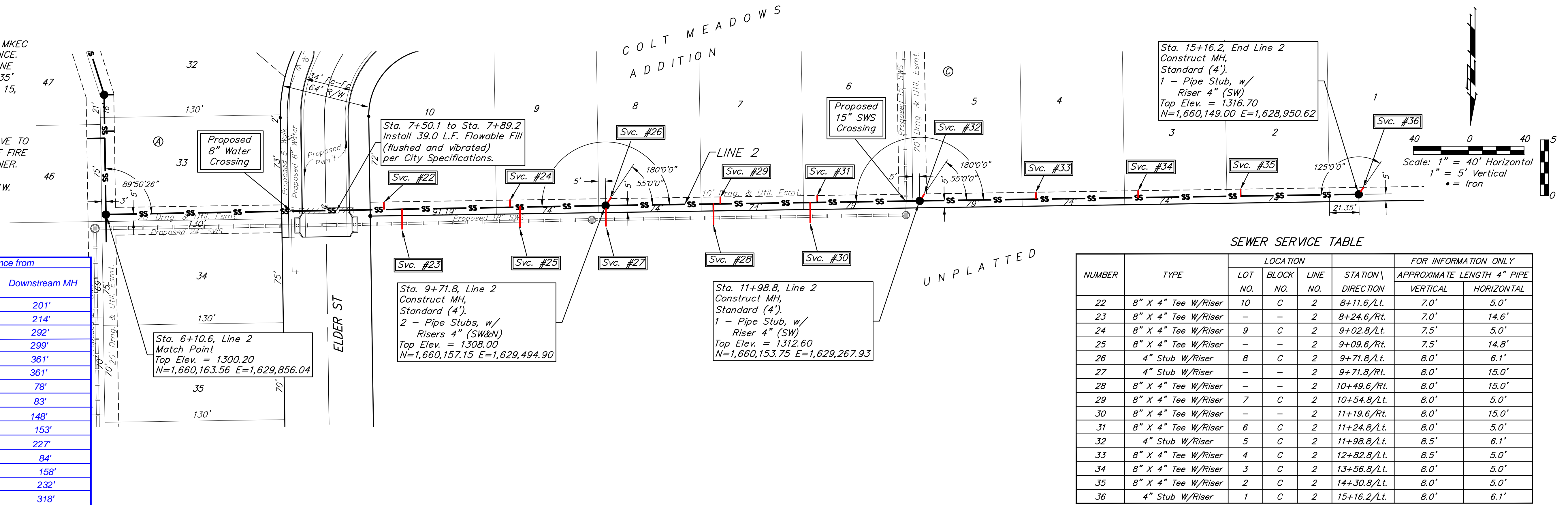
DATE: January 3, 2023

SHEET OF
7 19

File: E:\Projects\Colt Meadows Addition_21-01-P622\Engineering\Phase 1\Sewer 22-04-E164\Sewer.dwg

BENCHMARKS:
 BM #1: TOP OF 1 1/2" ALUMINUM MKEC DISC SOUTH SIDE OF FIELD ENTRANCE, 35' WEST OF HOOVER ROAD, 17' NNE OF POWER POLE, 28' SOUTH AND 35' WEST OF NE CORNER, SE1/4, SEC. 15, T28S, R1W. ELEV. = 1313.55 NAVD88

BM #2: CROSS CUT TOP OF CURB NORTH SIDE OF NORTH CIRCLE DRIVE TO OATVILLE ELEMENTARY, 3' WEST OF FIRE HYDRANT, 7' EAST OF FENCE CORNER, 373' NORTH AND 48' WEST OF NE CORNER, SE1/4, SEC. 15, T28S, R1W. ELEV. = 1315.78 NAVD88

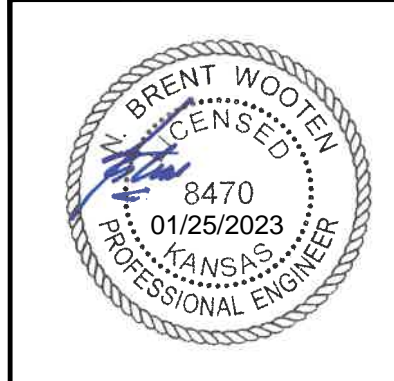
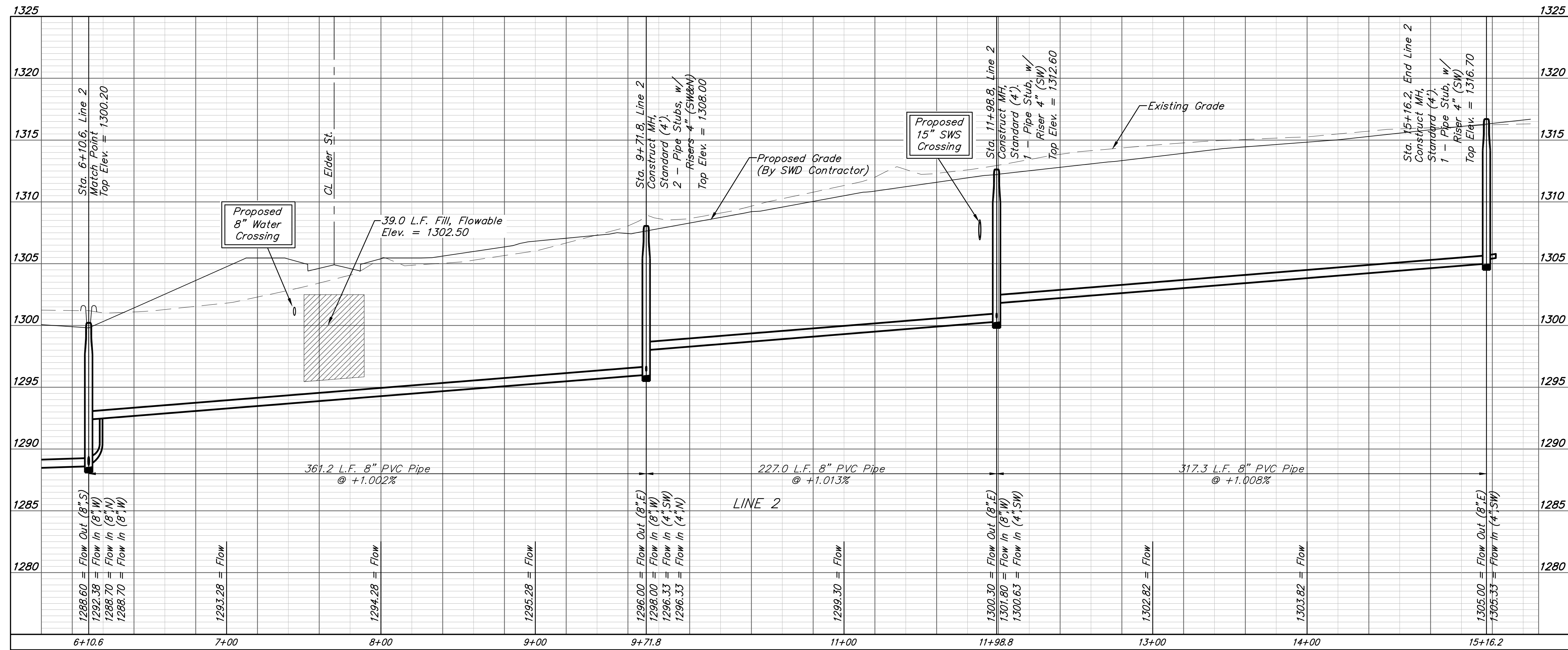


Riser Number	Distance from Main to Riser (L/R)	Distance from	
		Upstream MH	Downstream MH
22	5' Lt.	160'	201'
23	15' Rt.	147'	214'
24	5' Lt.	69'	292'
25	5' Lt.	62'	299'
26	6' Lt.	@ mh	361'
27	15' Rt.	@ mh	361'
28	15' Rt.	149'	78'
29	5' Lt.	144'	83'
30	15' Rt.	79'	148'
31	5' Lt.	74'	153'
32	6' Lt.	@ mh	227'
33	5' Lt.	234'	84'
34	5' Lt.	160'	158'
35	5' Lt.	86'	232'
36	6' Lt.	@ mh	318'

SEWER SERVICE TABLE

NUMBER	TYPE	LOCATION			FOR INFORMATION ONLY	
		LOT NO.	BLOCK NO.	LINE NO.	STATION DIRECTION	APPROXIMATE LENGTH 4" PIPE VERTICAL HORIZONTAL
22	8" X 4" Tee W/Riser	10	C	2	8+11.6/Lt.	7.0' 5.0'
23	8" X 4" Tee W/Riser	-	-	2	8+24.6/Rt.	7.0' 14.6'
24	8" X 4" Tee W/Riser	9	C	2	9+02.8/Lt.	7.5' 5.0'
25	8" X 4" Tee W/Riser	-	-	2	9+09.6/Rt.	7.5' 14.8'
26	4" Stub W/Riser	8	C	2	9+71.8/Lt.	8.0' 6.1'
27	4" Stub W/Riser	-	-	2	9+71.8/Rt.	8.0' 15.0'
28	8" X 4" Tee W/Riser	-	-	2	10+49.6/Rt.	8.0' 15.0'
29	8" X 4" Tee W/Riser	7	C	2	10+54.8/Lt.	8.0' 5.0'
30	8" X 4" Tee W/Riser	-	-	2	11+19.6/Rt.	8.0' 15.0'
31	8" X 4" Tee W/Riser	6	C	2	11+24.8/Lt.	8.0' 5.0'
32	4" Stub W/Riser	5	C	2	11+98.8/Lt.	8.5' 6.1'
33	8" X 4" Tee W/Riser	4	C	2	12+82.8/Lt.	8.5' 5.0'
34	8" X 4" Tee W/Riser	3	C	2	13+56.8/Lt.	8.0' 5.0'
35	8" X 4" Tee W/Riser	2	C	2	14+30.8/Lt.	8.0' 5.0'
36	4" Stub W/Riser	1	C	2	15+16.2/Lt.	8.0' 6.1'

NOTE: Vertical Riser Pipe shall be extended to 2' minimum above ground water elevation and 4' maximum below proposed ground elevation.



BAUGHMAN COMPANY
 315 Ellis St.
 Wichita, KS 67211
 316-262-7271
 BaughmanCo.com

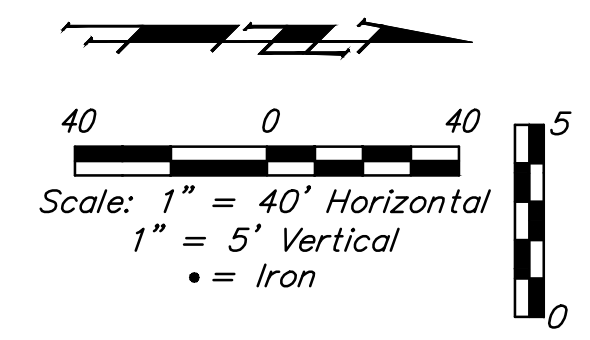
COLT MEADOWS ADD.
 Phase 1
LINE 2
 SANITARY SEWER IMPROVEMENTS
 PROJECT NUMBER:
 22-04-E164
 DESIGN: NBW DRAWN: TMS
 DATE: January 3, 2023
 SHEET OF
6 19

File: E:\Projects\Colt Meadows Addition_21-01-P622\Engineering\Phase 1\Sewer 22-04-E164\Sewer.dwg

BENCHMARKS:
 BM #1: TOP OF 1 1/2" ALUMINUM MKEC DISC SOUTH SIDE OF FIELD ENTRANCE. 35' WEST OF HOOVER ROAD. 17' NNE OF POWER POLE. 28' SOUTH AND 35' WEST OF NE CORNER, SE1/4, SEC. 15, T28S, R1W. ELEV. = 1313.55 NAVD88

BM #2: CROSS CUT TOP OF CURB NORTH SIDE OF NORTH CIRCLE DRIVE TO OATVILLE ELEMENTARY. 3' WEST OF FIRE HYDRANT. 7' EAST OF FENCE CORNER. 373' NORTH AND 48' WEST OF NE CORNER, SE1/4, SEC. 15, T28S, R1W. ELEV. = 1315.78 NAVD88

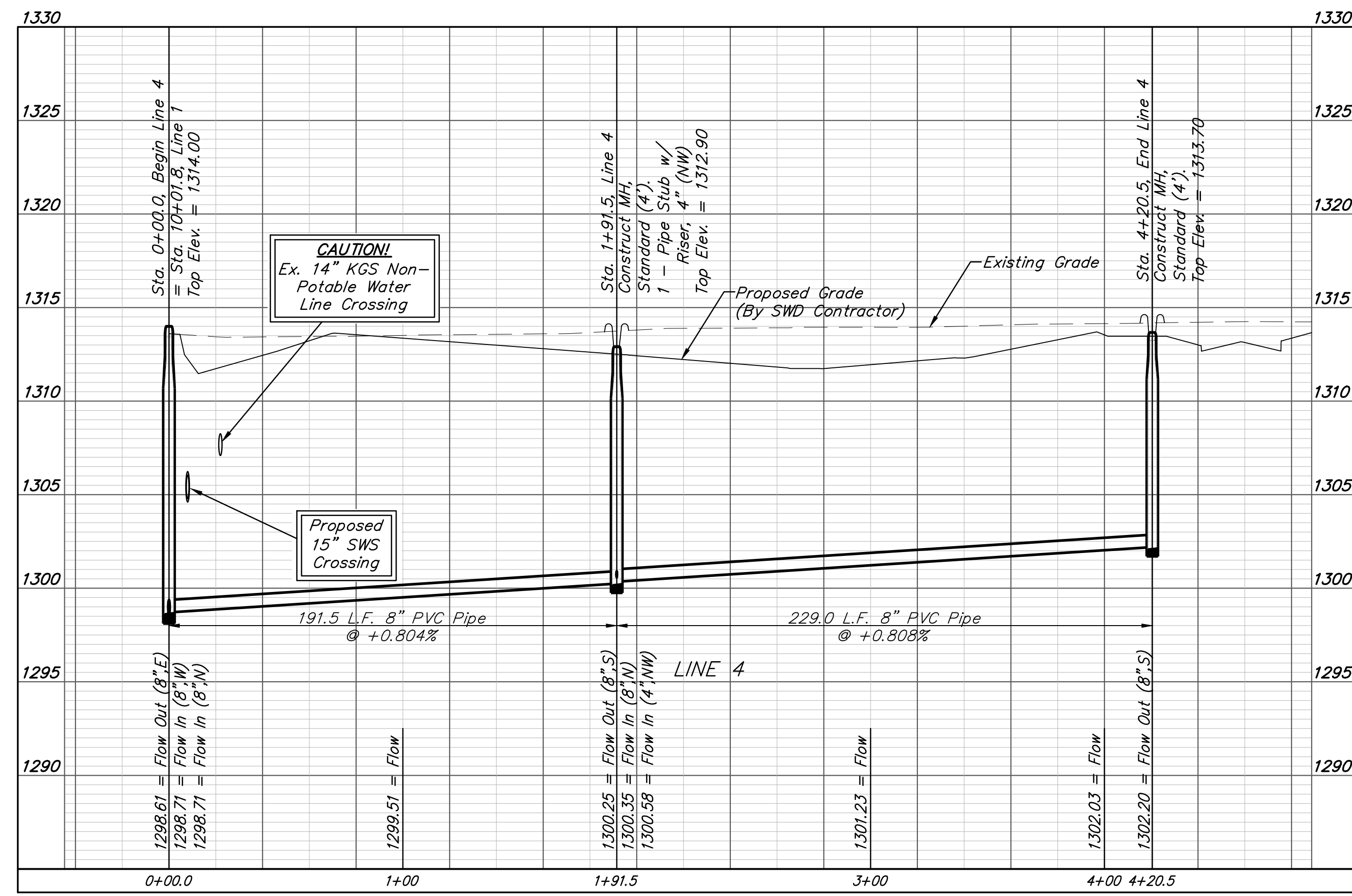
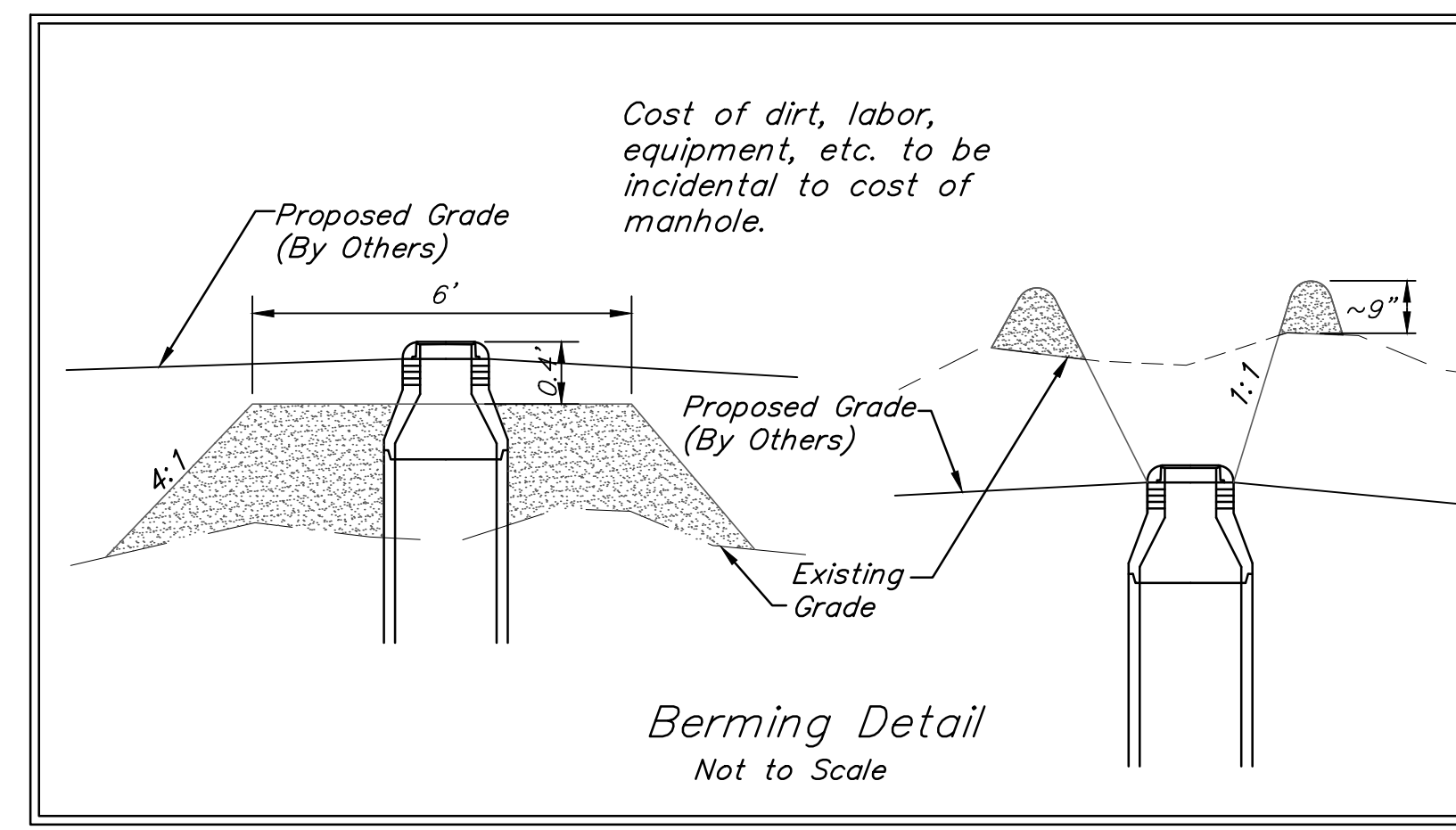
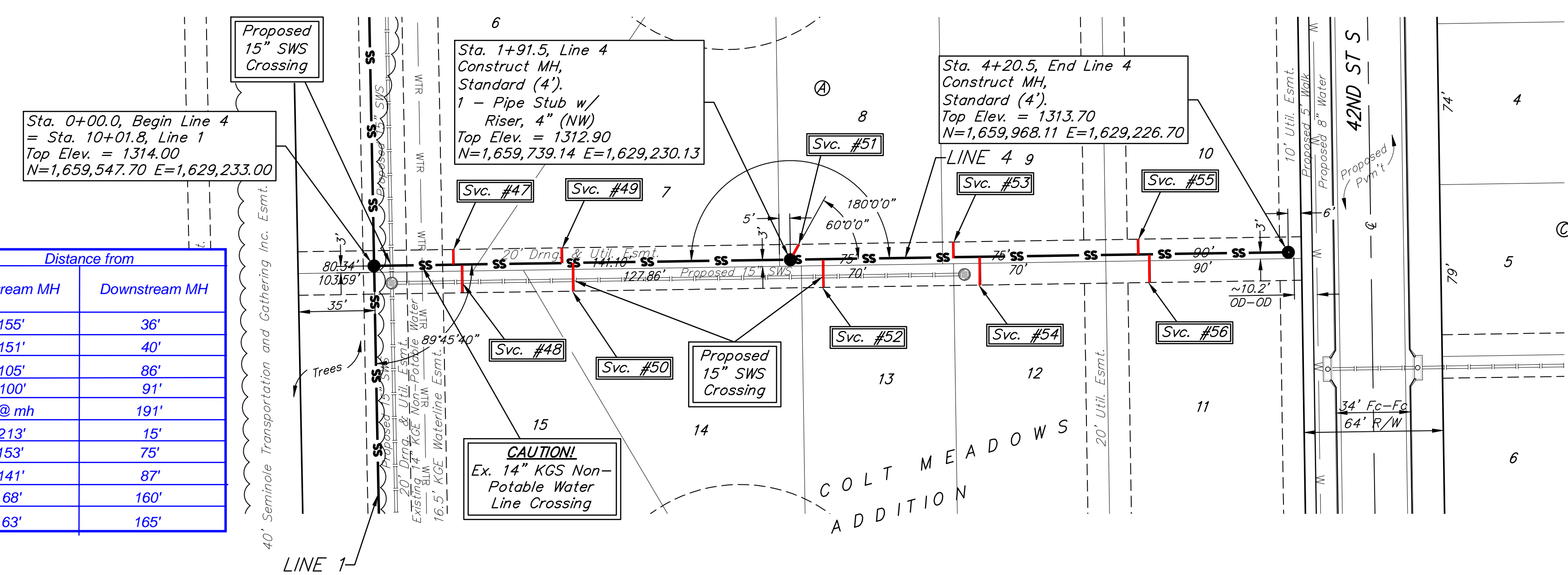
Contact Kansas Gas Service 3 weeks prior to construction to coordinate construction.



SEWER SERVICE TABLE

NUMBER	TYPE	LOCATION			FOR INFORMATION ONLY		Riser Number	Distance from Main to Riser (Lt./Rt.)	Distance from		
		LOT NO.	BLOCK NO.	LINE NO.	STATION \ DIRECTION	APPROXIMATE LENGTH 4" PIPE VERTICAL			HORIZONTAL	Upstream MH	Downstream MH
47	8" X 4" Tee W/Riser	6	A	4	0+36.5/Lt.	9.5'	7.0'	47	7' Lt.	155'	36'
48	8" X 4" Tee W/Riser	15	A	4	0+40.5/Rt.	9.5'	13.0'	48	13' Rt.	151'	40'
49	8" X 4" Tee W/Riser	7	A	4	0+86.5/Lt.	10.5'	7.0'	49	7' Lt.	105'	86'
50	8" X 4" Tee W/Riser	14	A	4	0+91.5/Rt.	10.5'	13.0'	50	13' Rt.	100'	91'
51	4" Stub W/Riser	8	A	4	1+91.5/Lt.	8.5'	8.0'	51	8' Lt.	@ mh	191'
52	8" X 4" Tee W/Riser	13	A	4	2+06.5/Rt.	8.0'	13.0'	52	13' Rt.	213'	15'
53	8" X 4" Tee W/Riser	9	A	4	2+66.5/Lt.	8.5'	7.0'	53	7' Lt.	153'	75'
54	8" X 4" Tee W/Riser	12	A	4	2+78.5/Rt.	8.5'	13.0'	54	13' Rt.	141'	87'
55	8" X 4" Tee W/Riser	10	A	4	3+51.5/Lt.	8.5'	8.0'	55	8' Lt.	68'	160'
56	8" X 4" Tee W/Riser	11	A	4	3+56.5/Rt.	8.5'	13.0'	56	13' Rt.	63'	165'

NOTE: Vertical Riser Pipe shall be extended to 2' minimum above ground water elevation and 4' maximum below proposed ground elevation.



BAUGHMAN COMPANY
 315 Ellis St.
 Wichita, KS 67211
 316-262-7271
 BaughmanCo.com

COLT MEADOWS ADD.
Phase 1

LINE 4

SANITARY SEWER IMPROVEMENTS

PROJECT NUMBER:
22-04-E164

DESIGN: NBW DRAWN: TMS
DATE: January 3, 2023

SHEET **8** OF **19**

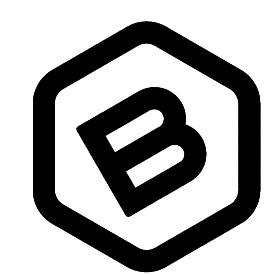
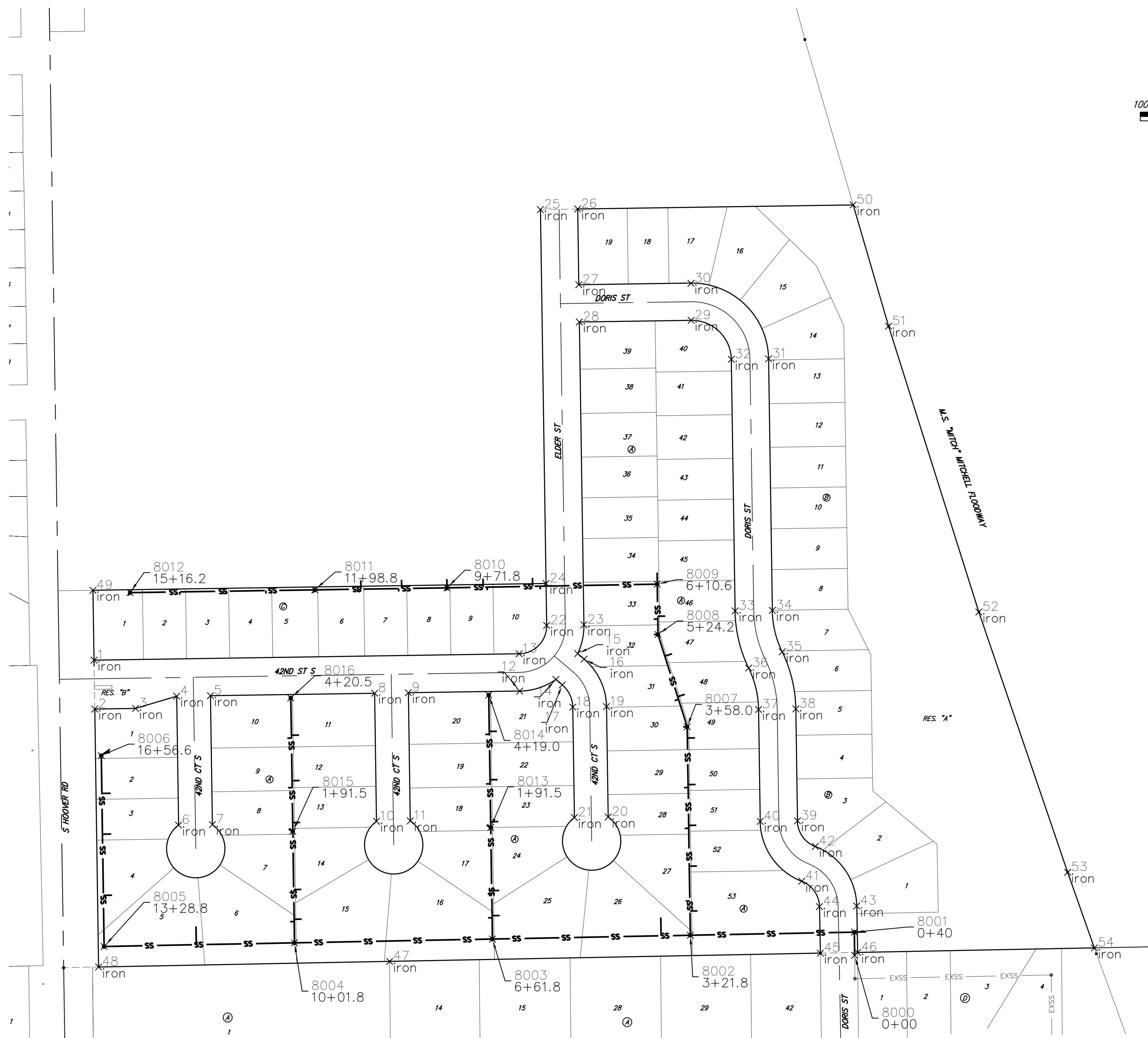
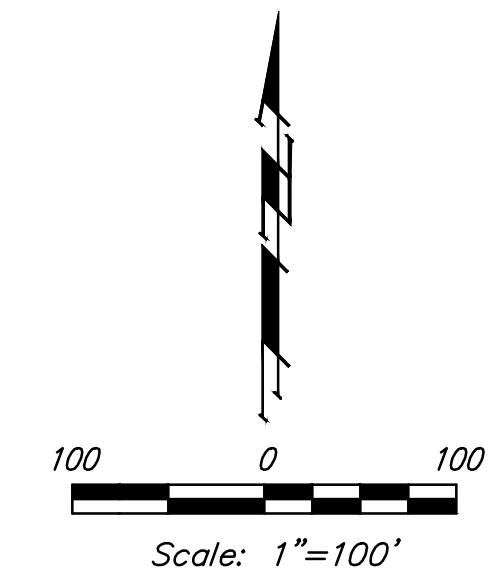
File: E:\Projects\Colt Meadows Addition_21-01-P622\Engineering\Phase 1\Sewer 22-04-E164\Sewer.dwg

IRONS

Point #	Northing	Easting	Raw Description
1	1660033.06	1628888.69	iron
2	1659949.07	1628889.95	iron
3	1659950.12	1628959.94	iron
4	1659971.18	1629030.64	iron
5	1659972.05	1629088.63	iron
6	1659749.80	1629033.95	iron
7	1659750.67	1629091.94	iron
8	1659976.27	1629370.60	iron
9	1659977.14	1629428.59	iron
10	1659756.34	1629373.89	iron
11	1659757.21	1629431.88	iron
12	1659980.00	1629619.76	iron
13	1660043.99	1629618.80	iron
14	1659999.95	1629681.91	iron
15	1660044.22	1629719.39	iron
16	1660034.87	1629730.43	iron
17	1659990.61	1629692.95	iron
18	1659952.45	1629710.99	iron
19	1659953.31	1629768.99	iron
20	1659763.74	1629771.82	iron
21	1659762.87	1629713.83	iron
22	1660092.70	1629666.08	iron
23	1660093.66	1629730.07	iron
24	1660164.69	1629665.00	iron
25	1660806.62	1629655.39	iron
26	1660807.58	1629719.39	iron
27	1660677.59	1629721.33	iron
28	1660613.60	1629722.29	iron
29	1660616.48	1629914.27	iron
30	1660680.02	1629913.98	iron
31	1660550.46	1630047.27	iron
32	1660549.50	1629983.28	iron
33	1660117.53	1629989.75	iron
34	1660118.49	1630053.74	iron
35	1660047.44	1630070.68	iron
36	1660019.41	1630013.15	iron
37	1659948.36	1630030.09	iron
38	1659949.32	1630094.08	iron
39	1659757.21	1630096.96	iron
40	1659756.25	1630032.97	iron
41	1659653.59	1630104.24	iron
42	1659713.21	1630127.51	iron
43	1659611.10	1630198.60	iron
44	1659609.87	1630134.61	iron
45	1659529.99	1630136.32	iron
46	1659531.21	1630200.31	iron
47	1659515.83	1629396.54	iron
48	1659506.26	1628896.58	iron
49	1660153.05	1628886.90	iron
50	1660814.66	1630192.52	iron
51	1660606.36	1630253.39	iron
52	1660115.68	1630408.50	iron
53	1659668.80	1630560.92	iron
54	1659538.99	1630606.82	iron

SANITARY SEWER

Point #	Northing	Easting	Raw Description
8000	1659526.11	1630195.12	0+00
8001	1659566.11	1630194.60	0+40
8002	1659560.72	1629912.88	3+21.8
8003	1659554.21	1629572.94	6+61.8
8004	1659547.70	1629233.00	10+01.8
8005	1659541.45	1628906.05	13+28.8
8006	1659869.23	1628901.15	16+56.6
8007	1659918.65	1629907.52	3+58.0
8008	1660077.12	1629857.34	5+24.2
8009	1660163.56	1629856.04	6+10.6
8010	1660157.15	1629494.90	9+71.8
8011	1660153.75	1629267.93	11+98.8
8012	1660149.00	1628950.62	15+16.2
8013	1659745.68	1629570.07	1+91.5
8014	1659973.20	1629566.67	4+19.0
8015	1659739.14	1629230.13	1+91.5
8016	1659968.11	1629226.70	4+20.5



BAUGHMAN COMPANY
 315 Ellis St.
 Wichita, KS 67211
 316-262-7271
 BaughmanCo.com

COLT MEADOWS ADD.
 Phase 1

COORDINATE SHEET

SANITARY SEWER IMPROVEMENTS

PROJECT NUMBER:
 22-04-E164

DESIGN: NBW DRAWN: TMS

DATE: January 3, 2023

SHEET **18** OF **19**

File: E:\Projects\Colt Meadows Addition_21-01-P622\Engineering\Phase 1\Sewer 22-04-E164\Sewer.dwg