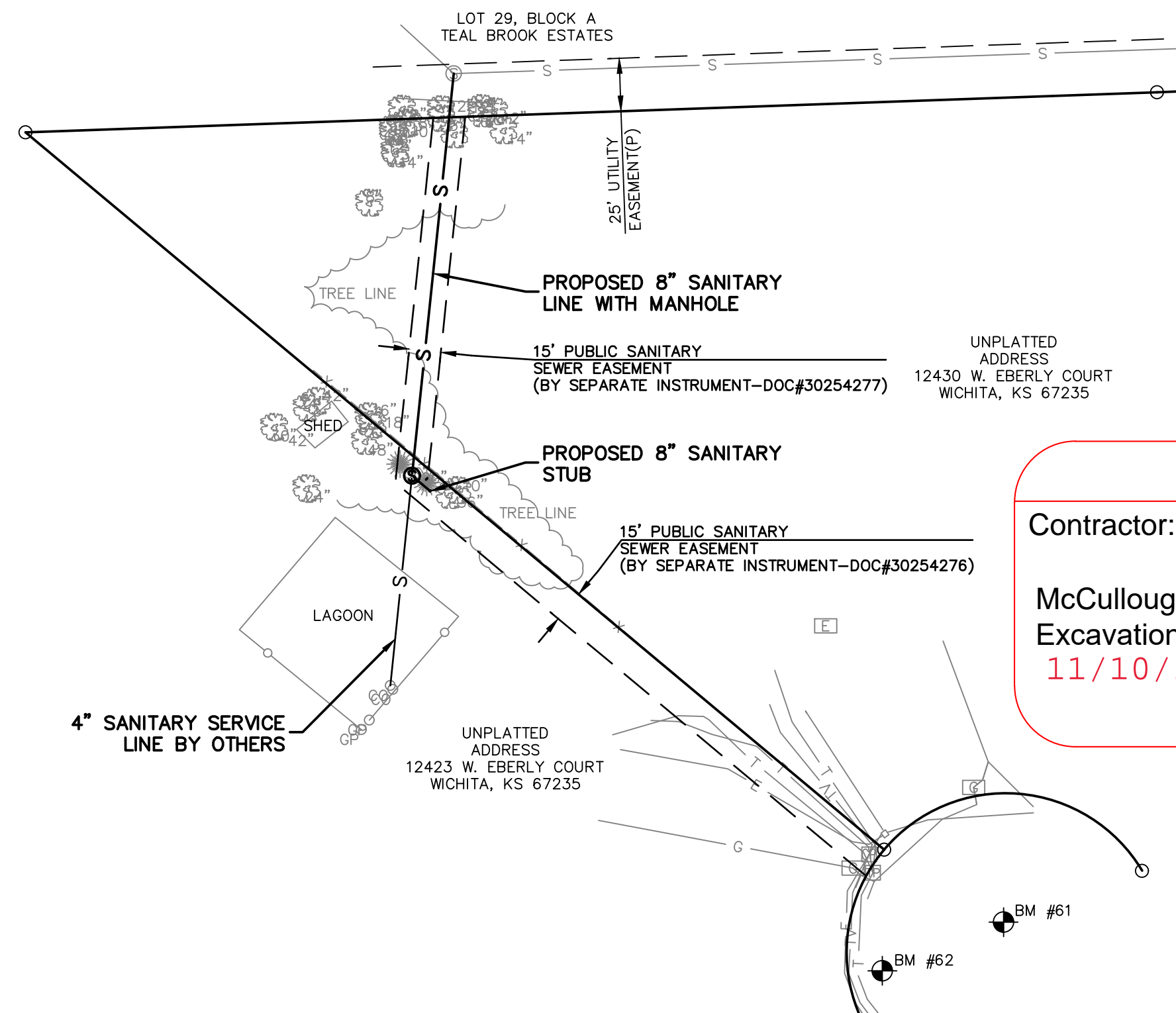
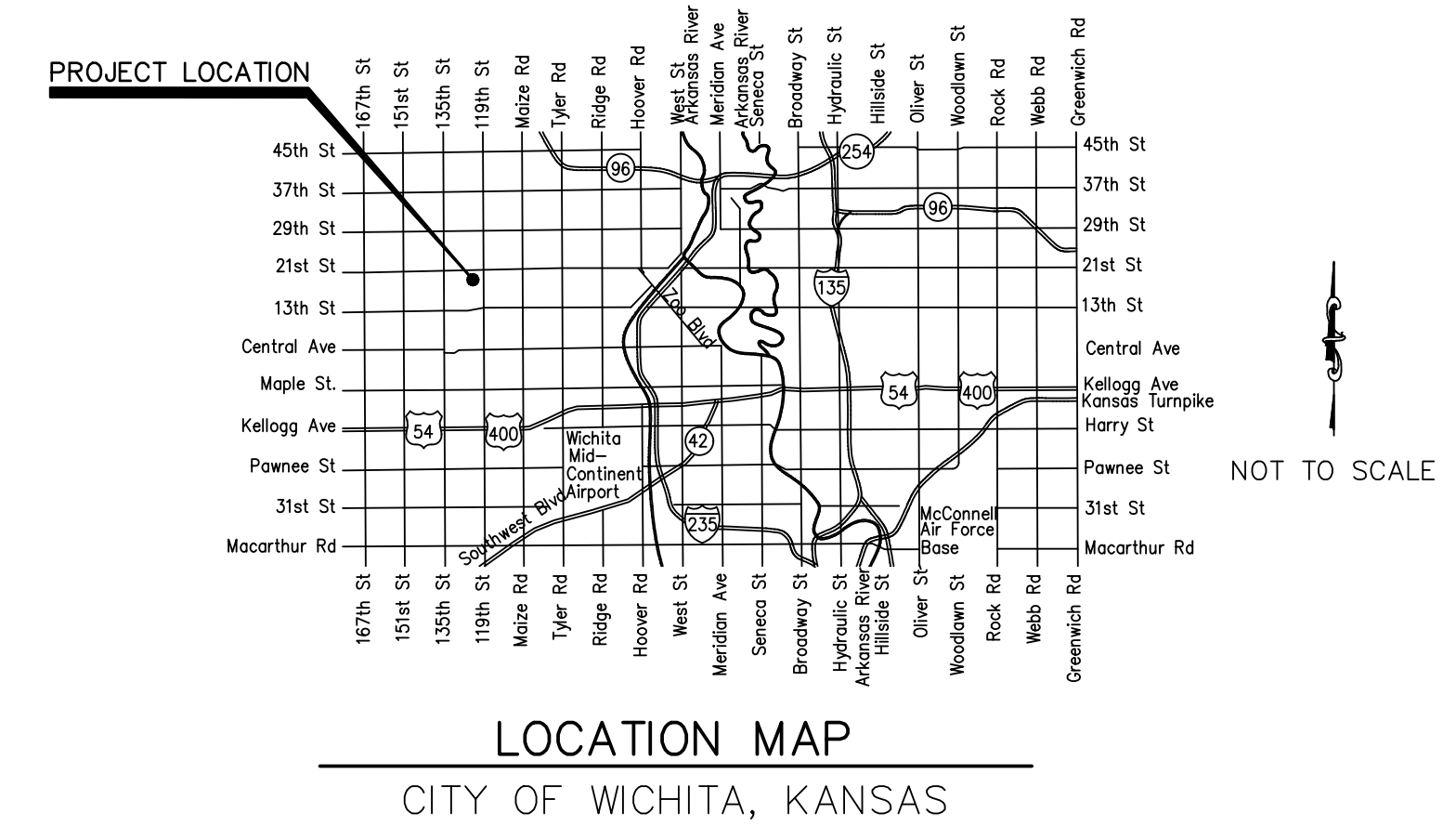


GENERAL NOTES:

- THE CONTRACTOR SHALL COMPLY WITH ALL APPLICABLE SAFETY REGULATIONS. ALL CONSTRUCTION SHALL BE COMPLETED FOLLOWING CURRENT CITY STANDARD SPECIFICATIONS AND SPECIAL PROVISIONS.
- THE CONTRACTOR WILL BE REQUIRED TO PROVIDE NOTICE TO UTILITY COMPANIES A MINIMUM OF SEVENTY-TWO (72) HOURS PRIOR TO ANY EXCAVATION, AS FOLLOWS:
KANSAS ONE-CALL 687-2470
THE CONTRACTOR MUST NOTIFY THE FOLLOWING IN CASE OF AN EMERGENCY:
AT&T 1-800-246-8464
BLACK HILLS ENERGY 1-800-694-8989
CITY OF WICHITA WATER & SEWER 1-316-219-8921
CITY OF WICHITA STORMWATER 1-316-268-4090
CITY OF WICHITA TRAFFIC 1-316-268-4034
COX COMMUNICATIONS 1-888-249-3530
KANSAS GAS SERVICE 1-888-482-4950
EVERGY 1-800-544-4857
- UTILITY SERVICE LINES, POLES, ET CETERA, ARE TO BE ADJUSTED AS NECESSARY BY OTHERS PRIOR TO CONSTRUCTION UNLESS THE PLANS SPECIFICALLY CALL FOR THEIR ADJUSTMENT BY THE CONTRACTOR OR UNLESS THE PLANS SPECIFICALLY IDENTIFY A UTILITY TO BE ADJUSTED BY ITS OWNER DURING CONSTRUCTION. EXISTING UTILITIES AND THEIR LOCATION, AS SHOWN ON THE PLANS, REPRESENT THE BEST INFORMATION REASONABLY OBTAINABLE FOR DESIGN. THE CONTRACTOR WILL BE REQUIRED TO WORK AROUND EXISTING UTILITIES WITHIN THE RIGHT-OF-WAY THAT DO NOT CONFLICT WITH PROPOSED CONSTRUCTION.
- RUBBLE FROM THE REMOVAL OF MISCELLANEOUS STRUCTURES AND EXCESS EXCAVATION THAT IS TO BE WASTED SHALL BE DISPOSED OF ON SITES TO BE PROVIDED BY THE CONTRACTOR. THESE SITES SHALL BE APPROVED BY THE ENGINEER AS TO SUITABILITY, APPEARANCE AND SITE LOCATION. LOCATIONS, IN THE OPINION OF THE ENGINEER, THAT WILL LEAVE AN UNSIGHTLY APPEARANCE WILL NOT BE APPROVED. ALL DISPOSAL SITES MUST BE APPROVED BY THE KANSAS DEPARTMENT OF HEALTH AND ENVIRONMENT. MATERIAL EITHER STOCKPILED OR DISPOSED OF IN A FLOODPLAIN FILL WILL REQUIRE A KANSAS STATE BOARD OF AGRICULTURE FLOODPLAIN FILL PERMIT. ANY MATERIAL DUMPED IN WATERS OF THE UNITED STATES OR WETLANDS IS SUBJECT TO U.S. CORPS. OF ENGINEERS PERMITTING REGULATIONS. ANY MATERIAL BURIED OR STOCKPILED BEYOND APPROVED CONSTRUCTION LIMITS WILL REQUIRE ADDITIONAL ARCHAEOLOGICAL INVESTIGATIONS UNLESS BURIED OR STOCKPILED IN A PREVIOUSLY APPROVED BORROW LOCATION.
- TREES AND SHRUBS IN PUBLIC RIGHT-OF-WAY WHICH ARE IN DIRECT CONFLICT WITH PROPOSED NEW CONSTRUCTION SHALL BE REMOVED BY THE CONTRACTOR WITH THE ENGINEER'S APPROVAL. TREES AND SHRUBS THAT ARE NOT IN DIRECT CONFLICT WITH PROPOSED NEW CONSTRUCTION SHALL BE SAVED AND PROTECTED FROM DAMAGE.
- IF PRACTICABLE THE CONTRACTOR SHALL GIVE ALL PROPERTY OWNERS AND/OR TENANTS OF DEVELOPED PROPERTY ADJUTING THE CONSTRUCTION OF THIS PROJECT A MINIMUM OF TEN (10) DAYS NOTICE PRIOR TO START OF CONSTRUCTION.
- THE CONTRACTOR SHALL BE RESPONSIBLE FOR PRESERVING PROPERTY IRONS. THE CONTRACTOR WILL BE REQUIRED TO REESTABLISH ANY PROPERTY IRONS WHICH ARE DAMAGED OR DESTROYED BY HIS CONSTRUCTION OPERATIONS. SUCH IRONS SHALL BE REESTABLISHED BY A LICENSED LAND SURVEYOR IN ACCORDANCE WITH STATE LAWS.
- THE ENGINEERING DIVISION SHALL FIELD LOCATE WATER VALVES ONE TIME DURING CONSTRUCTION WHEN REQUESTED BY THE CONTRACTOR. IT SHALL BE THE CONTRACTOR'S RESPONSIBILITY TO PRESERVE SUCH FIELD LOCATIONS DURING THE CONSTRUCTION PROCESS. WATER VALVES, VALVE BOXES OR FIRE HYDRANTS DAMAGED DURING CONSTRUCTION SHALL BE REPAIRED BY CONTRACTOR AT THEIR OWN EXPENSE. VALVE BOXES AND WATER METERS WITHIN THE PROJECT LIMITS SHALL BE ADJUSTED TO MATCH FINAL GRADES BY THE CONTRACTOR.
- THE CONTRACTOR SHALL NOTIFY THE CONSULTANT ENGINEER AS WELL AS THE CITY, DAWNITA REINHARDT AT 316-650-0740, WITH THE ANTICIPATED CONSTRUCTION START DATE AND NOTIFY THEM OF PROJECT COMPLETION. STAKING AND INSPECTION FOR THIS PROJECT WILL BE THE RESPONSIBILITY OF THE CONTRACTOR.
- IF TRAFFIC WILL BE IMPACTED BY CONSTRUCTION, A TRAFFIC CONTROL PLAN MUST BE SUBMITTED AND APPROVED BY THE CITY TRAFFIC ENGINEER AT TRAFFIC@WICHITA.GOV BEFORE CONSTRUCTION CAN BEGIN. THE CONTRACTOR SHALL BE RESPONSIBLE FOR ALL TRAFFIC CONTROL MEASURES TO FACILITATE CONSTRUCTION. ALL CONSTRUCTION ZONE MARKINGS AND SIGNAGE SHALL CONFORM TO THE LATEST VERSION OF THE MANUAL ON UNIFORM TRAFFIC CONTROL DEVICES (MUTCD) AS PUBLISHED BY THE US DEPT. OF TRANSPORTATION, FEDERAL HIGHWAY ADMINISTRATION. ALL COSTS ASSOCIATED WITH CONSTRUCTION MARKINGS AND SIGNAGE SHALL BE THE CONTRACTORS RESPONSIBILITY.
- ALL ELEVATIONS SHOWN ARE NAVD 88.
- ALL AREAS DISTURBED DURING CONSTRUCTION THAT WILL NOT BE UNDER PROPOSED PAVEMENT SHALL BE RESTORED TO MATCH EXISTING CONDITIONS.
- ALL APPLICABLE FEES (TAP, EQUITY, IN LIEU OF & MAIN BENEFIT) MUST BE PAID BEFORE ANY CONNECTIONS CAN BE MADE ON THIS PROJECT. QUOTES CAN BE OBTAINED ON FEES BE CALLING 316-268-4555.
- CITY MAINTENANCE OF SANITARY SEWER MAINS ENDS AT LAST STRUCTURE WITHIN THE EASEMENT OR RIGHT-OF-WAY.
- ALL STUBS AND CAPPED PIPES SHALL BE LOCATED WITH GREEN PLASTIC TAPE IN THE SAME MANNER AS RISERS.
- CONNECTING TO EXISTING MANHOLES: PRIOR TO LAYING SEWER LINES USING EXISTING STUBS IN EXISTING MANHOLES, THE CONTRACTOR SHALL EXPOSE AND VERIFY THE ELEVATION, GRADE AND ALIGNMENT OF EXISTING STUBS AND NOTIFY THE ENGINEER OF ANY DEVIATION FROM THE PLANS. WHERE THE STUB IS UNUSABLE DUE TO ELEVATION GRADE OR ALIGNMENT, THE CONTRACTOR SHALL REMOVE THE STUB AND PLUG THE HOLE, AND RESHAPE THE EXISTING MANHOLE INVERT TO PROVIDE SMOOTH FLOW. WHERE CONNECTING TO AN EXISTING MANHOLE THAT DOES NOT HAVE AN EXISTING STUB, THE CONTRACTOR SHALL CORE CUT INTO EXISTING MANHOLE WALL TO MAKE CONNECTION USING APPROVED WATER STOP GASKET, AND RESHAPE THE EXISTING MANHOLE INVERT TO PROVIDE SMOOTH FLOW. THE COST TO CONNECTING TO EXISTING MANHOLES IS INCIDENTAL TO THE PROJECT.
- CONTRACTOR SHALL LIMIT THE EXTENT OF TRENCH OPEN OVERNIGHT AND WEEKENDS TO LESS THAN 50 FEET.
- CONTRACTOR SHALL PROVIDE POSITIVE DRAINAGE AWAY FROM ALL MANHOLE COVERS.
- THE CONTRACTOR SHALL PREVENT ANY CONSTRUCTION DEBRIS FROM ENTERING THE EXISTING SANITARY SEWER DURING CONSTRUCTION.
- THE CONTRACTOR SHALL BE RESPONSIBLE FOR MAINTAINING CONTINUOUS FLOW OF SEWAGE THROUGH CONSTRUCTION. CONTRACTORS PROPOSED METHOD FOR MAINTAINING SEWAGE FLOW SHALL BE SUBMITTED AND APPROVED BY THE SEWER MAINTENANCE DIVISION (316-268-4073) PRIOR TO STARTING AND BY-PASSING OF SEWAGE FLOWS.
- ANY OVER EXCAVATION FROM MANHOLE AND PIPE REMOVAL SHALL BE BACKFILLED WITH AB-3 COMPACTED TO 90-95% ASTM D698.
- THE CONTRACTOR SHALL PROTECT FROM DAMAGE AND SUPPORT EXISTING UTILITIES THROUGH CONSTRUCTION AS APPROVED BY THE UTILITY OWNER AND THE ENGINEER AT THE CONTRACTORS EXPENSE.
- SITE PREPARATION AND RESTORATION SHALL BE SUBSIDIARY TO THE PROJECT.
- THE CONTRACTOR SHALL USE BEST MANAGEMENT PRACTICES (BMP'S) TO PREVENT ERODED SOIL FROM ENTERING DITCHES, CULVERTS, AND DRAINAGE BASINS. THE CONTRACTOR SHALL FOLLOW THE INTENT OF THE BMP'S WHICH ACT AS A GUIDELINE.
- EXISTING UTILITIES AND THEIR LOCATIONS, AS SHOWN ON THE PLANS REPRESENT THE BEST INFORMATION OBTAINABLE FOR DESIGN. LOCATION INFORMATION HAS BEEN OBTAINED FROM VARIOUS COMPANIES AND IS EITHER FROM COMPANY UTILITY DRAWINGS OR COMPANY PROVIDED FIELD LOCATIONS. THE PLAN LOCATIONS SHOWN ARE NOT GUARANTEED. ADDITIONAL EXISTING UTILITIES MAY BE ENCOUNTERED.
- ANY AND ALL UTILITY SYSTEM COMPONENTS DAMAGED DURING CONSTRUCTION SHALL BE REPAIRED AT THE CONTRACTOR'S EXPENSE.
- ALL TRENCHING IN PAVEMENT OR DRIVEWAYS, WHICH WILL BE REQUIRED TO CARRY TRAFFIC UNTIL PERMANENT PAVING REPLACEMENT, SHALL BE TOPPED WITH A MINIMUM OF 6" CRUSHED ROCK (COMPACTED) TO BE INCIDENTAL TO THE PROJECT. CONTRACTOR SHALL BE REQUIRED TO MAINTAIN TEMPORARY CRUSHED ROCK UNTIL PERMANENT PAVEMENT IS INSTALLED.
- THE PRECAST MANUFACTURER SHALL PROVIDE A SEALED DESIGN DETAIL FOR ALL PRECAST ITEMS USED ON THE PROJECT TO INSURE THE INTENT OF THE PLANS ARE MET.
- MAINTAIN A MINIMUM OF 10-FOOT HORIZONTAL SEPARATION BETWEEN ALL WATER LINES (MAINS, SERVICES, AND FIRE HYDRANTS), AND ALL SANITARY SEWER LINES (MAINS, SERVICES, AND MANHOLES). ALL SEPARATION DISTANCES ARE TO BE MEASURED FROM EDGE-TO-EDGE AT THE CLOSEST POINT.
- MAINTAIN A MINIMUM OF 2-FOOT VERTICAL SEPARATION BETWEEN ALL WATER LINES (MAINS AND SERVICES) AND ALL GRAVITY SANITARY SEWER LINES (MAINS, SERVICES, AND MANHOLES) AT CROSSINGS. ALL SEPARATION DISTANCES ARE TO BE MEASURED FROM EDGE-TO-EDGE, AT THE CLOSEST POINT.
- MAINTAIN A MINIMUM OF 2-FOOT VERTICAL SEPARATION BETWEEN ALL WATER LINES (MAIN AND SERVICES) AND ALL PRESSURIZED SANITARY SEWER LINES (FORCED MAINS AND SERVICES) AT CROSSINGS. WATERLINES MUST ALWAYS BE PLACED ABOVE PRESSURIZED SANITARY SEWER LINES WHERE THEY CROSS. ALL SEPARATION DISTANCES ARE TO BE MEASURED FROM EDGE-TO-EDGE, AT THE CLOSEST POINT.

SANITARY SEWER IMPROVEMENTS TO SERVE A PORTION OF SECTION 12, TOWNSHIP 27 SOUTH, RANGE 2 WEST CITY OF WICHITA, KANSAS

PAUL GUNZELMAN, P.E. INTERIM CITY ENGINEER
PROJECT NUMBER
2023-017919PPS (53030982)



D. Reinhardt - City of Wichita, Inspector
Release Date: 11/15/2023
: apr 12/6/2023

AS BUILTS

Contractor: McCullough Excavation 11/10/2023	Project Inspector: Larry Gann KEMILLER ENGINEERING PA 117 E. Lewis, Wichita, KS 67202 (316)264-0242
---	--

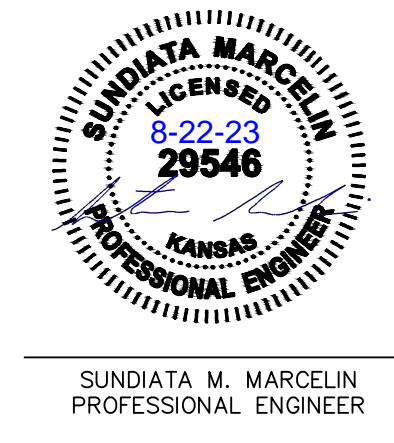
DATUM BENCHMARK:
DATUM IS U.S. SURVEY FEET AND REFERS TO NAVD88 DATUM DERIVED FROM CONNECTIONS TO THE SEDGWICK COUNTY NTRIP NETWORK. ORTHOMETRIC HEIGHT WAS DETERMINED USING THE GEOD 18 MODEL.

BENCHMARKS:
BM #61: CHISELED "X" IN CENTER OF SIDEWALK ±15' NORTH OF FLAG POLE IN CENTER OF CUL-DE-SAC ON EBERLY COURT. ELEV=1354.11
BM #62: CHISELED SQUARE ON EAST END OF CONCRETE HEADWALL ON SOUTH SIDE OF DRIVE ENTRANCE TO 12423 W. EBERLY COURT. ELEV=1351.66

CAUTION - NOTICE TO CONTRACTOR
THE CONTRACTOR IS SPECIFICALLY CAUTIONED THAT THE LOCATION AND/OR ELEVATION OF EXISTING UTILITIES AS SHOWN ON THESE PLANS IS BASED ON RECORDS OF THE VARIOUS UTILITY COMPANIES AND, WHERE POSSIBLE, MEASUREMENTS TAKEN IN THE FIELD. THE INFORMATION IS NOT TO BE RELIED ON AS BEING EXACT OR COMPLETE. THE CONTRACTOR MUST CALL THE APPROPRIATE UTILITY COMPANY AT LEAST 72 HOURS BEFORE ANY EXCAVATION TO REQUEST EXACT FIELD LOCATION OF UTILITIES. IT SHALL BE THE RESPONSIBILITY OF THE CONTRACTOR TO RELOCATE ALL EXISTING UTILITIES WHICH CONFLICT WITH PROPOSED IMPROVEMENTS SHOWN ON THE PLANS. **THE CONTRACTOR SHALL EXPOSE EXISTING UTILITIES AT LOCATIONS OF POSSIBLE CONFLICTS PRIOR TO ANY CONSTRUCTION.**

SAFETY NOTICE TO CONTRACTOR
IN ACCORDANCE WITH GENERALLY ACCEPTED CONSTRUCTION PRACTICES, THE CONTRACTOR WILL BE SOLELY AND COMPLETELY RESPONSIBLE FOR CONDITIONS OF THE JOB SITE, INCLUDING SAFETY OF ALL PERSONS AND PROPERTY DURING PERFORMANCE OF THE WORK. THIS REQUIREMENT WILL APPLY CONTINUOUSLY AND NOT BE LIMITED TO NORMAL WORKING HOURS.

WARRANTY / DISCLAIMER
THE DESIGNS REPRESENTED IN THESE PLANS ARE IN ACCORDANCE WITH ESTABLISHED PRACTICES OF CIVIL ENGINEERING FOR THE DESIGN FUNCTIONS AND USES INTENDED BY THE OWNER AT THIS TIME. HOWEVER, NEITHER KAW VALLEY ENGINEERING, INC NOR ITS PERSONNEL CAN OR DO WARRANTY THESE DESIGNS OR PLANS AS CONSTRUCTED, EXCEPT IN THE SPECIFIC CASES WHERE KAW VALLEY ENGINEERING PERSONNEL INSPECT AND CONTROL THE PHYSICAL CONSTRUCTION ON A CONTEMPORARY BASIS AT THE SITE.



INDEX OF SHEETS

1	TITLE SHEET
2	SANITARY SEWER PLAN & PROFILE
3	EROSION CONTROL PLAN
4	PRECAST MANHOLE DETAIL
5	MANHOLE FRAME & COVER DETAIL
6	CURB & INLET PROTECTION DETAIL
7	SILT FENCE BARRIER DETAIL
8	STRAW BALE BARRIER DETAIL
9	STREET IMPROV. PROJECT DETAIL
10	SUBDIVISION DEV. PROCESS DETAIL

APPROVED AS NOTED BY WICHITA PUBLIC WORKS ENGINEERING DIVISION

Engineering Approved by Shawn Mellies 08/21/23
Utilities Approved by Deb Ary 08/21/23

NOTE TO CONTRACTORS
Inspection and testing for this project is to be provided by a Licensed Consulting Engineering Firm under contract with the Owner/Developer. Said inspection to be in accordance with the City of Wichita standard construction engineering practices and certified by a Licensed Professional Engineer in the state of Kansas. No work shall be performed by the Contractor without such inspection nor shall any work be commenced without written authorization by City Engineering. All Construction and Materials shall comply with the current City of Wichita Specifications and Standards and Special Provisions. (on file and available at Wichita.gov).
An approved copy of these plans signed by City staff are required on-site.

THIS PLAN SHEET IS PART OF AN OVERALL KAW VALLEY ENGINEERING PLAN SET FOR THE SPECIFIC IMPROVEMENTS CONTEMPLATED THEREIN. AS SUCH, THE INFORMATION CONTAINED MAY BE LIMITED AND SHOULD ONLY BE INTERPRETED WITHIN THE CONTEXT OF THE COMPLETE PLAN SET.

AUGUST 2023

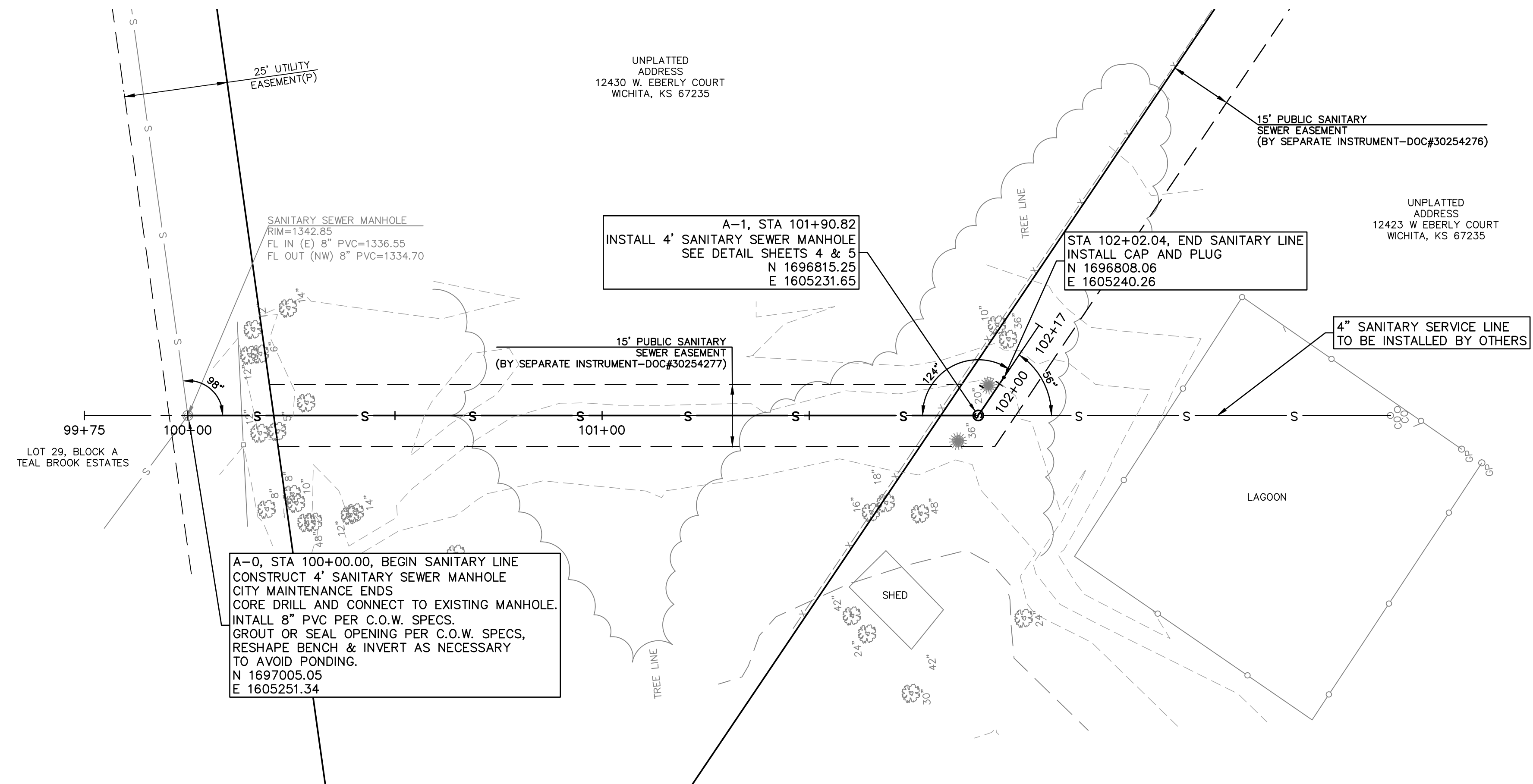
KAW VALLEY ENGINEERING

PROJ. NO. G23-2588 DSN: KP
CFN: 2588STS DWN: KS

SUNDIATA MARCELIN
ENGINEER
KS # 29546

200 N. EMPORIA, SUITE 100
WICHITA, KANSAS 67202
PH. (316) 440-4304
wh@kveng.com | www.kveng.com

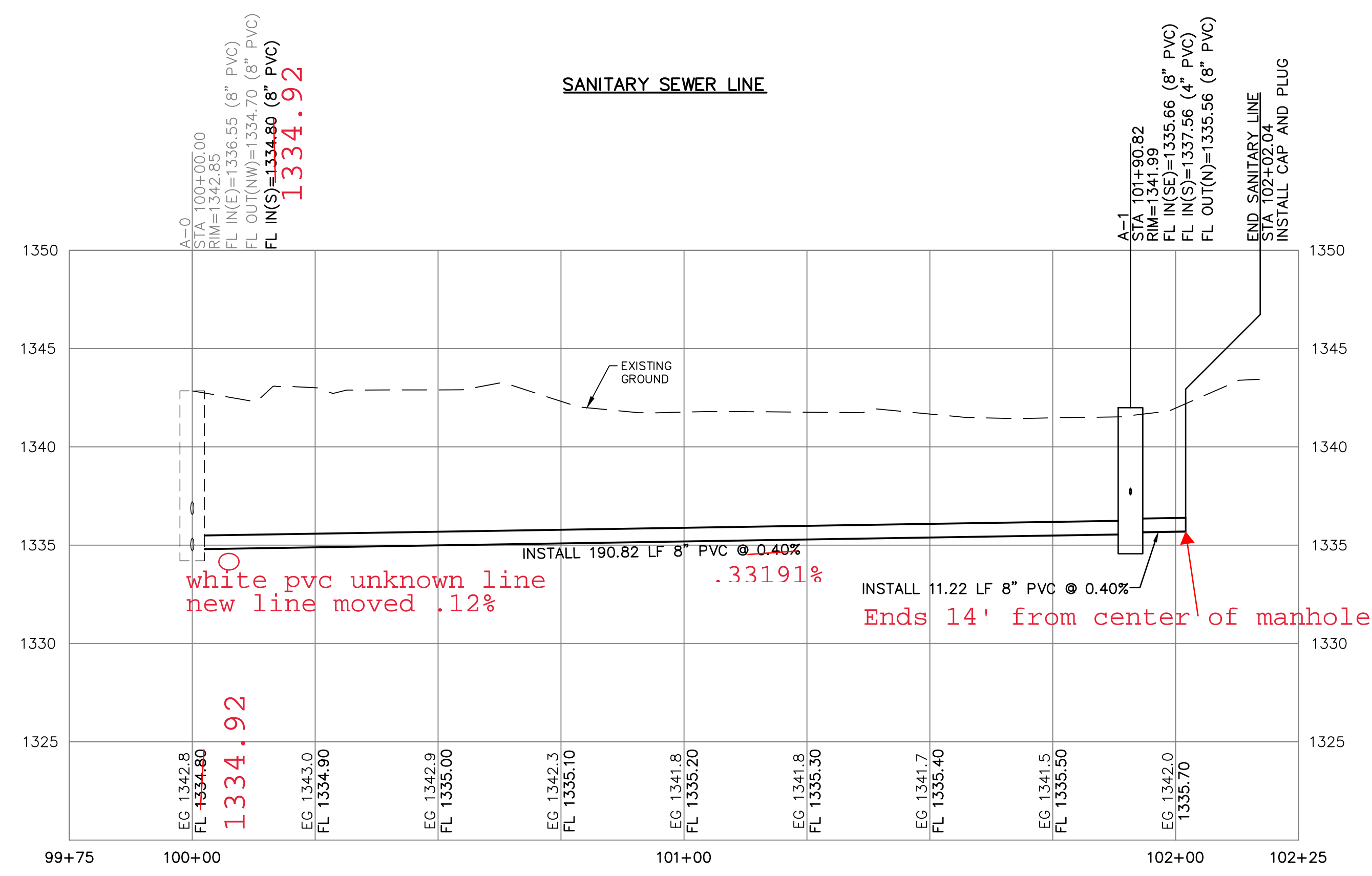
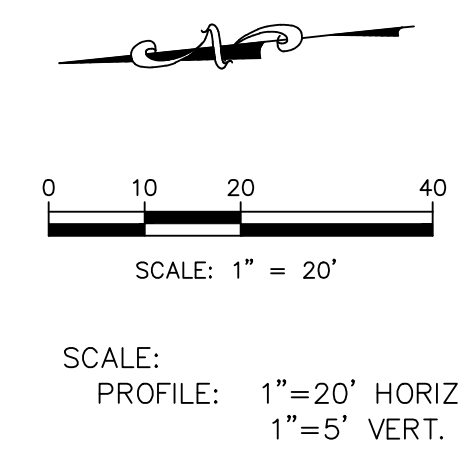
KAW VALLEY ENGINEERING, INC., IS AUTHORIZED TO OFFER ENGINEERING SERVICES BY KANSAS STATE CERTIFICATE OF AUTHORIZATION # E-11.3. EXPIRES 12/31/24



AS BUILTS

KEMILLER
ENGINEERING PA

117 E. Lewis,
Wichita, KS 67202 (316)264-0242



THE COORDINATES PROVIDED IN THESE PLANS ARE FOR INFORMATION AND CHECKING PURPOSES ONLY. IT IS THE CONTRACTOR'S RESPONSIBILITY TO CALCULATE CONSTRUCTION STAKING COORDINATES ACCORDING TO THE DIMENSIONS SHOWN ON THESE PLANS. CONTRACTOR SHALL VERIFY THE ACCURACY OF THE COORDINATES SHOWN IN THE TABLE HEREON BEFORE CONSTRUCTION.

THIS PLAN SHEET IS PART OF AN OVERALL KAW VALLEY ENGINEERING PLAN SET FOR THE SPECIFIC IMPROVEMENTS CONTEMPLATED THEREIN. AS SUCH, THE INFORMATION CONTAINED MAY BE LIMITED AND SHOULD ONLY BE INTERPRETED WITHIN THE CONTEXT OF THE COMPLETE PLAN SET.

0	08/21/23	INITIAL ISSUE	DESCRIPTION
		REV	DATE
		0	08/21/23
		1	08/21/23
		2	08/21/23
		3	08/21/23
		4	08/21/23
		5	08/21/23
		6	08/21/23
		7	08/21/23
		8	08/21/23
		9	08/21/23
		10	08/21/23
		11	08/21/23
		12	08/21/23
		13	08/21/23
		14	08/21/23
		15	08/21/23
		16	08/21/23
		17	08/21/23
		18	08/21/23
		19	08/21/23
		20	08/21/23
		21	08/21/23
		22	08/21/23
		23	08/21/23
		24	08/21/23
		25	08/21/23
		26	08/21/23
		27	08/21/23
		28	08/21/23
		29	08/21/23
		30	08/21/23
		31	08/21/23
		32	08/21/23
		33	08/21/23
		34	08/21/23
		35	08/21/23
		36	08/21/23
		37	08/21/23
		38	08/21/23
		39	08/21/23
		40	08/21/23
		41	08/21/23
		42	08/21/23
		43	08/21/23
		44	08/21/23
		45	08/21/23
		46	08/21/23
		47	08/21/23
		48	08/21/23
		49	08/21/23
		50	08/21/23
		51	08/21/23
		52	08/21/23
		53	08/21/23
		54	08/21/23
		55	08/21/23
		56	08/21/23
		57	08/21/23
		58	08/21/23
		59	08/21/23
		60	08/21/23
		61	08/21/23
		62	08/21/23
		63	08/21/23
		64	08/21/23
		65	08/21/23
		66	08/21/23
		67	08/21/23
		68	08/21/23
		69	08/21/23
		70	08/21/23
		71	08/21/23
		72	08/21/23
		73	08/21/23
		74	08/21/23
		75	08/21/23
		76	08/21/23
		77	08/21/23
		78	08/21/23
		79	08/21/23
		80	08/21/23
		81	08/21/23
		82	08/21/23
		83	08/21/23
		84	08/21/23
		85	08/21/23
		86	08/21/23
		87	08/21/23
		88	08/21/23
		89	08/21/23
		90	08/21/23
		91	08/21/23
		92	08/21/23
		93	08/21/23
		94	08/21/23
		95	08/21/23
		96	08/21/23
		97	08/21/23
		98	08/21/23
		99	08/21/23
		100	08/21/23
		101	08/21/23
		102	08/21/23
		103	08/21/23
		104	08/21/23
		105	08/21/23
		106	08/21/23
		107	08/21/23
		108	08/21/23
		109	08/21/23
		110	08/21/23
		111	08/21/23
		112	08/21/23
		113	08/21/23
		114	08/21/23
		115	08/21/23
		116	08/21/23
		117	08/21/23
		118	08/21/23
		119	08/21/23
		120	08/21/23
		121	08/21/23
		122	08/21/23
		123	08/21/23
		124	08/21/23
		125	08/21/23
		126	08/21/23
		127	08/21/23
		128	08/21/23
		129	08/21/23
		130	08/21/23
		131	08/21/23
		132	08/21/23
		133	08/21/23
		134	08/21/23
		135	08/21/23
		136	08/21/23
		137	08/21/23
		138	08/21/23
		139	08/21/23
		140	08/21/23
		141	08/21/23
		142	08/21/23
		143	08/21/23
		144	08/21/23
		145	08/21/23
		146	08/21/23
		147	08/21/23
		148	08/21/23
		149	08/21/23
		150	08/21/23
		151	08/21/23
		152	08/21/23
		153	08/21/23
		154	08/21/23
		155	08/21/23
		156	08/21/23
		157	08/21/23
		158	08/21/23
		159	08/21/23
		160	08/21/23
		161	08/21/23
		162	08/21/23
		163	08/21/23
		164	08/21/23
		165	08/21/23
		166	08/21/23
		167	08/21/23
		168	08/21/23
		169	08/21/23
		170	08/21/23
		171	08/21/23
		172	08/21/23
		173	08/21/23
		174	08/21/23
		175	08/21/23
		176	08/21/23
		177	08/21/23
		178	08/21/23
		179	08/21/23
		180	08/21/23
		181	08/21/23
		182	08/21/23
		183	08/21/23
		184	08/21/23
		185	08/21/23
		186	08/21/23
		187	08/21/23
		188	08/21/23
		189	08/21/23
		190	08/21/23
		191	08/21/23
		192	08/21/23
		193	08/21/23
		194	08/21/23
		195	08/21/23
		196	08/21/23
		197	08/21/23
		198	08/21/23
		199	08/21/23
		200	08/21/23
		201	08/21/23
		202	08/21/23
		203	08/21/23
		204	08/21/23
		205	08/21/23
		206	08/21/23
		207	08/21/23
		208	08/21/23
		209	08/21/23
		210	08/21/23
		211	08/21/23
		212	08/21/23
		213	08/21/23
		214	08/21/23
		215	08/21/23
		216	08/21/23
		217	08/21/23
		218	08/21/23
		219	08/21/23
		220	08/21/23
		221	08/21/23
		222	08/21/23
		223	08/21/23
		224	08/21/23
		225	08/21/23
		226	08/21/23
		227	08/21/23
		228	08/21/23
		229	08/21/23
		230	08/21/23
		231	08/21/23
		232	08/21/23
		233	08/21/23
		234	08/21/23
		235	08/21/23
		236	08/21/23
		237	08/21/23
		238	08/21/23
		239	08/21/23
		240	08/21/23
		241	08/21/23
		242	08/21/23
		243	08/21/23
		244	08/21/23
		245	08/21/23
		246	08/21/23
		247	08/21/23
		248	08/21/23
		249	08/21/23
		250	08/21/23
		251	08/21/23
		252	08/21/23
		253	08/21/23
		254	08/21/23
		255	08/21/23
		256	08/21/23
		257	08/21/23
		258	08/21/23
		259	08/21/23
		260	08/21/23
		261	08/21/23
		262	08/21/23
		263	08/21/23
		264	08/21/23
		265	08/21/23
		266	08/21/23
		267	