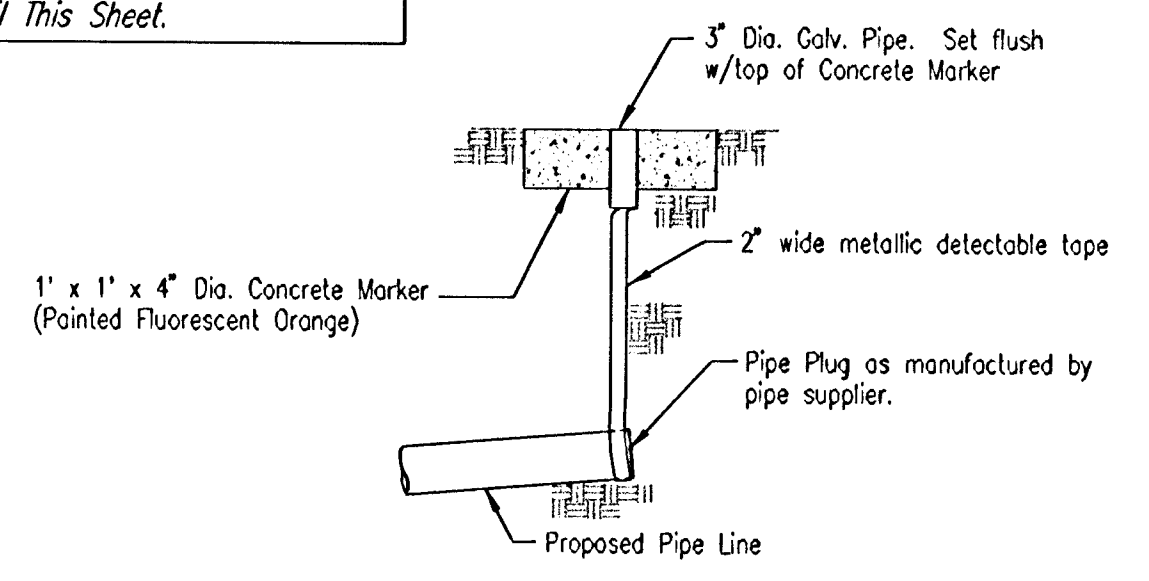
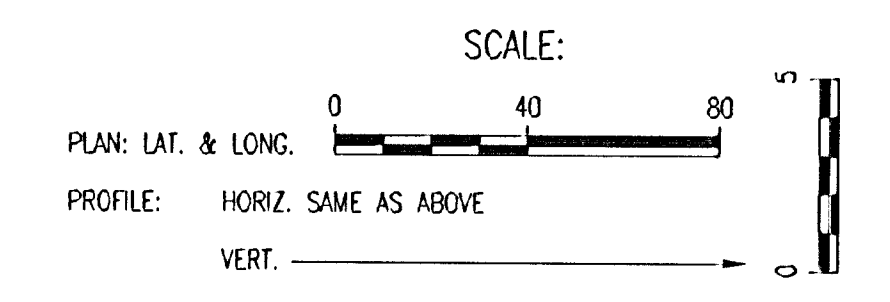
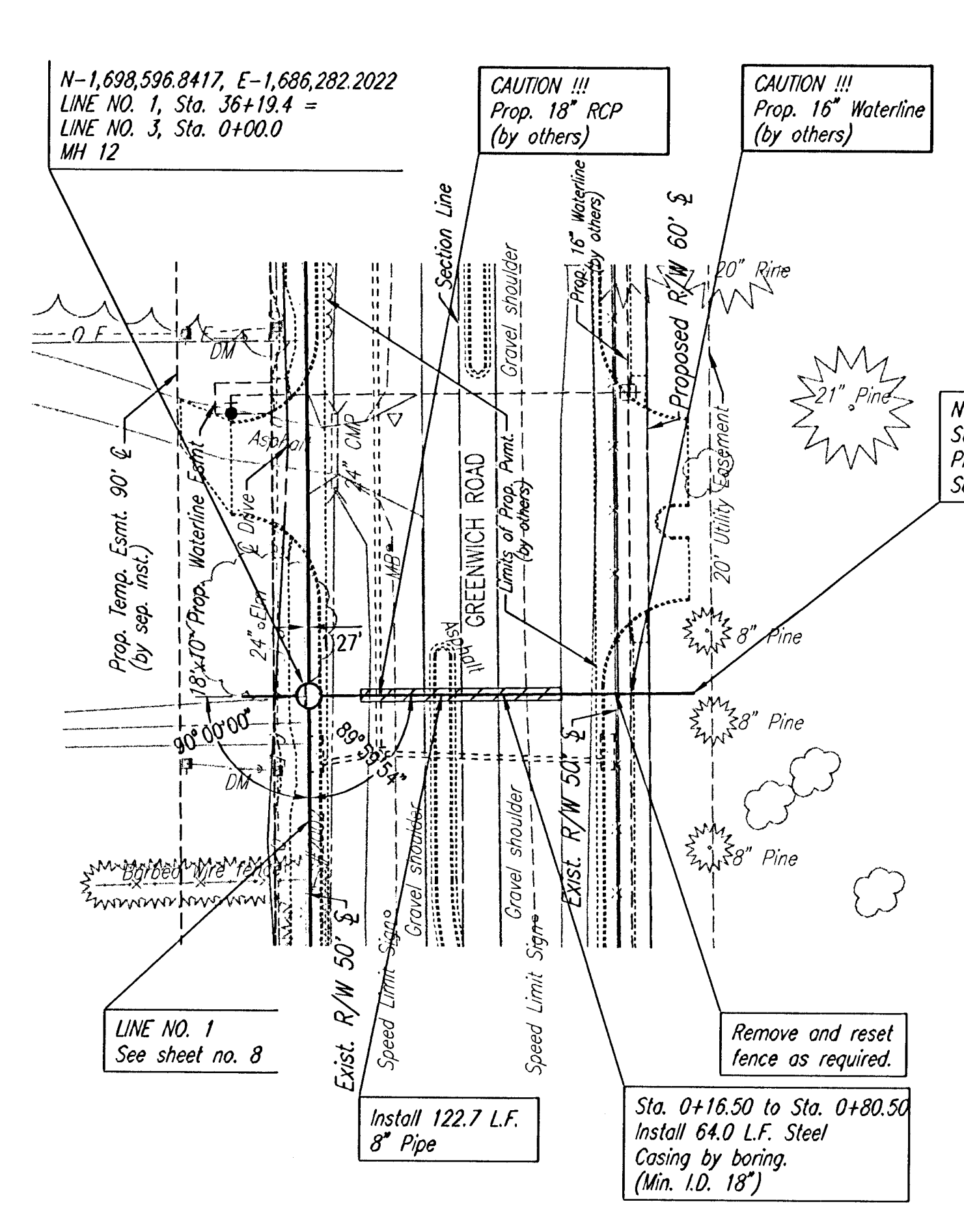
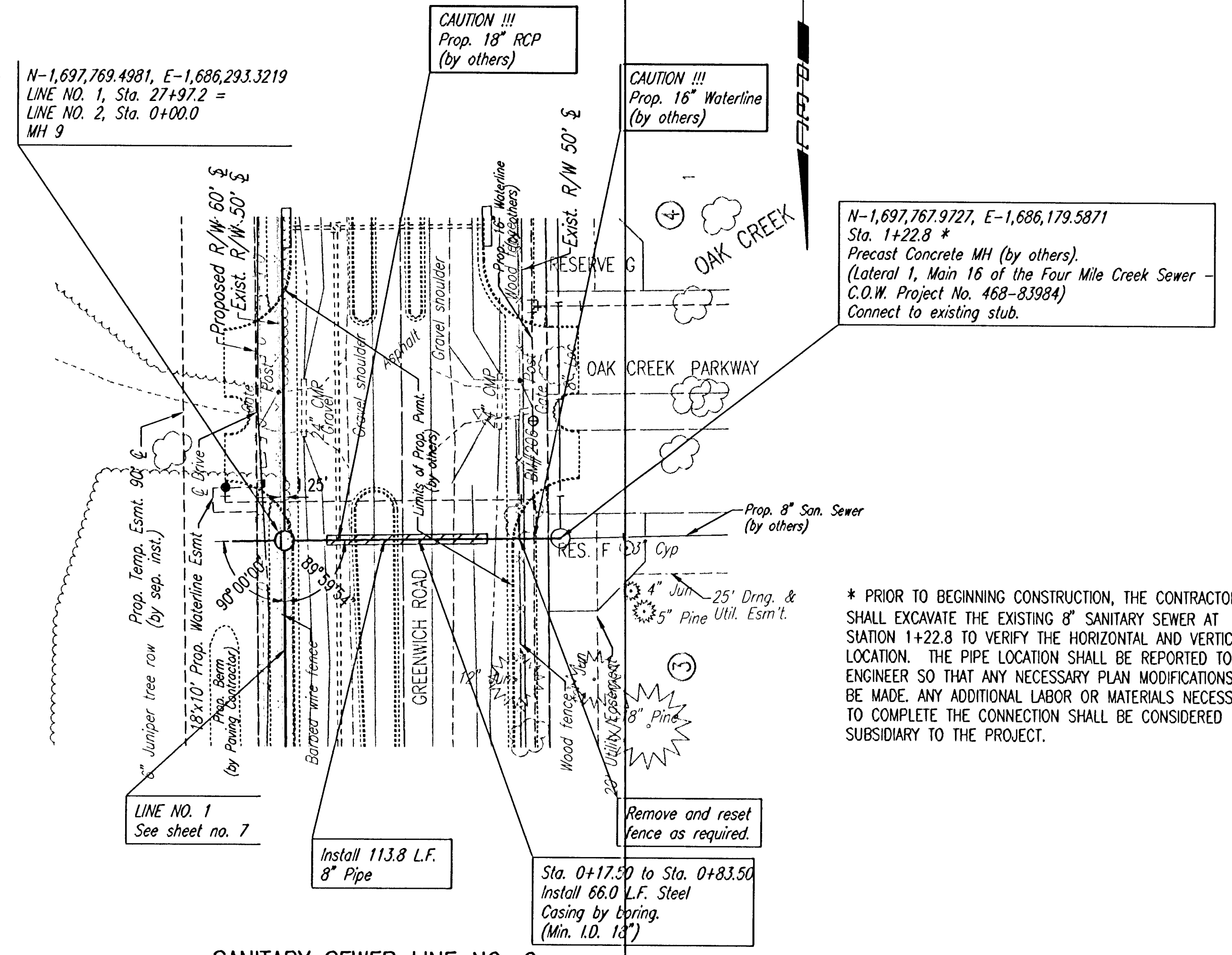


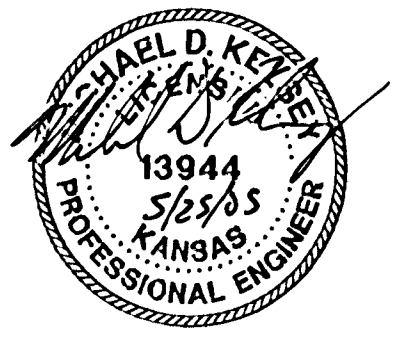
PLAN	CHECKED	CHECKED
BY		
DATE		

PROFILE	CHECKED	CHECKED
BY		
DATE		

DSNR: MOK OPER. CSI. SCALE: 1"=40.00'
 01/2004/C04219/002/SSPP09 05-24-2005 06:07:30 pm



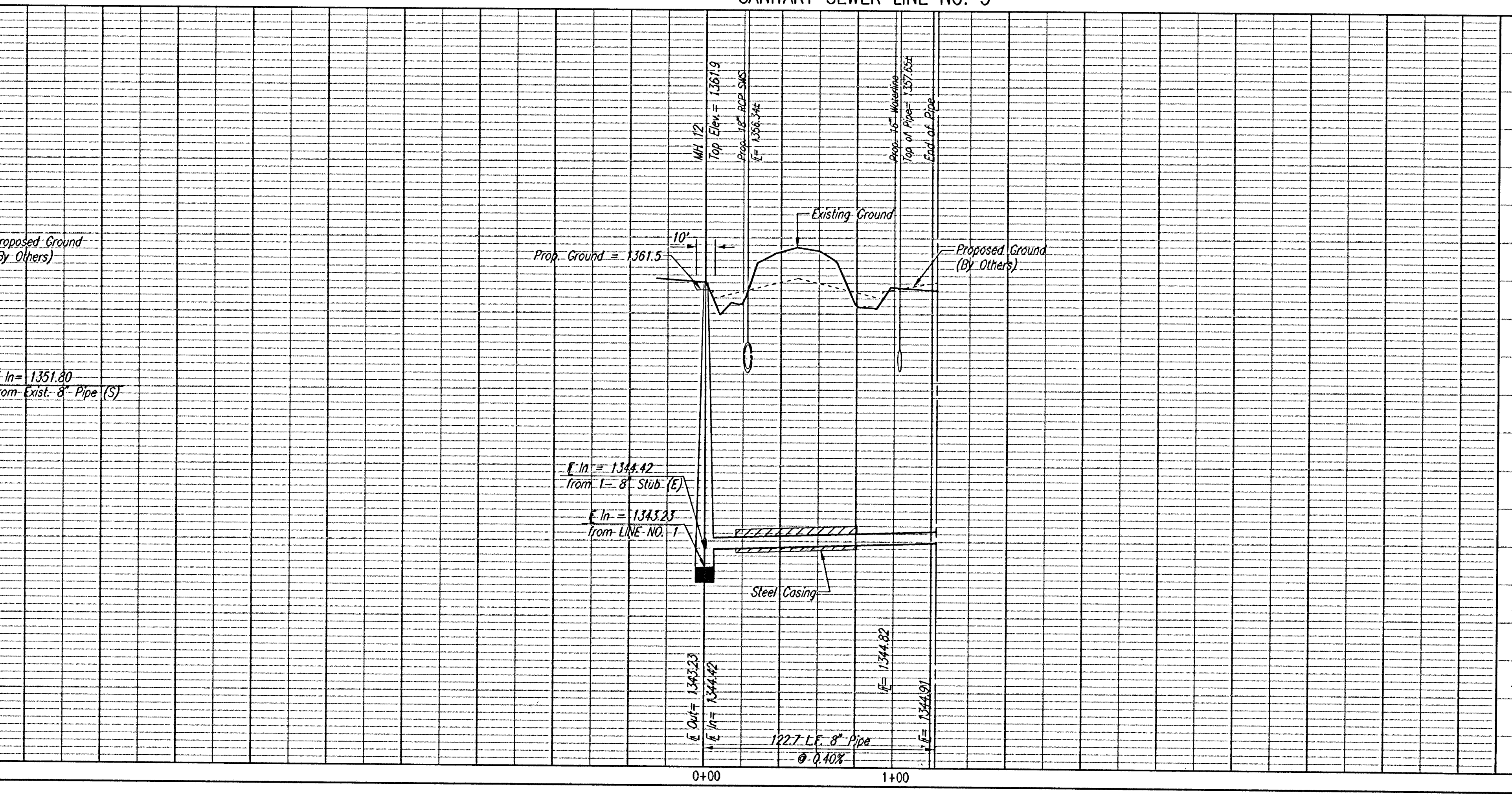
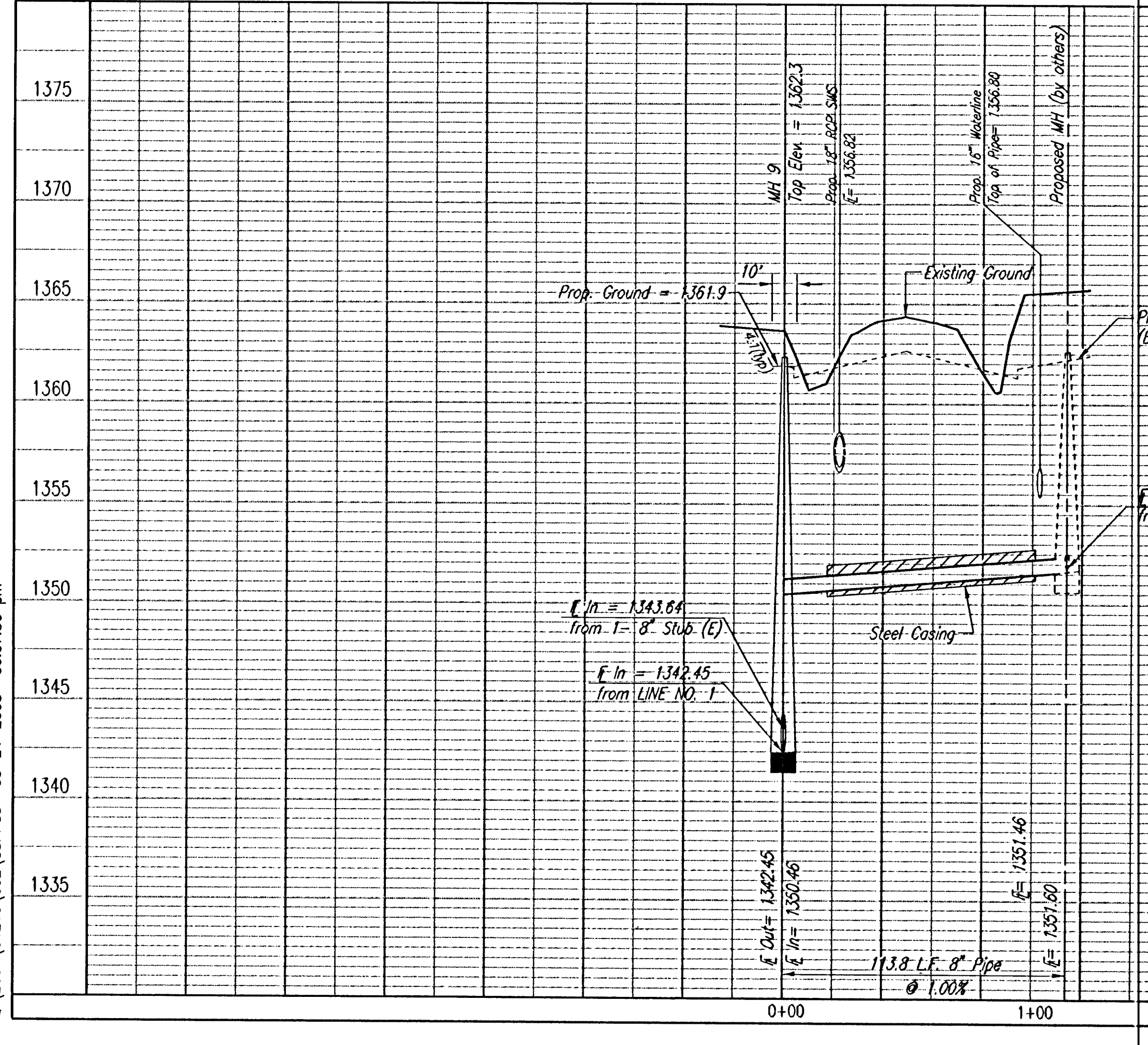
BURIED PIPE PLUG & MARKER DETAIL
 (PLUGGING & STAKING SHALL BE SUBSIDIARY TO THE LUMP SUM PRICE BID FOR PIPE IN PLACE)



* PRIOR TO BEGINNING CONSTRUCTION, THE CONTRACTOR SHALL EXCAVATE THE EXISTING 8" SANITARY SEWER AT STATION 1+22.8 TO VERIFY THE HORIZONTAL AND VERTICAL LOCATION. THE PIPE LOCATION SHALL BE REPORTED TO THE ENGINEER SO THAT ANY NECESSARY PLAN MODIFICATIONS CAN BE MADE. ANY ADDITIONAL LABOR OR MATERIALS NECESSARY TO COMPLETE THE CONNECTION SHALL BE CONSIDERED SUBSIDIARY TO THE PROJECT.

SANITARY SEWER LINE NO. 2

SANITARY SEWER LINE NO. 3



MAIN 16 OF THE
FOUR MILE CREEK SEWER

SANITARY SEWER LINE NO. 2 AND NO. 3

Professional Engineering Consultants, P.A.
 503 S. TRINITY - WICHITA, KANSAS 67202
 316-262-2691 - FAX 316-262-3066

Designed By: MDK
 Drawn By: JCA, TRD

Job No.: 35-04219-002
 Date: MAY 2004

JAMES L. ARMOUR, P.E. - CITY ENGINEER
 CITY OF WICHITA PROJECT NO. 468-83933

Sheet 12 of 26