

J:\PROJECTS\2017\1701010370\_VERANDA.ADD\_17270\_CAD\SHS\505 CIVIL\SAN2ND ADDITION\17270-05-20003.DWG  
 J:\PROJECTS\2017\1701010370\_VERANDA.ADD\_17270\_CAD\SHS\505 CIVIL\SAN2ND ADDITION\17270-05-20003.DWG  
 PLOTTED: Monday, February 06, 2023 @ 09:13AM

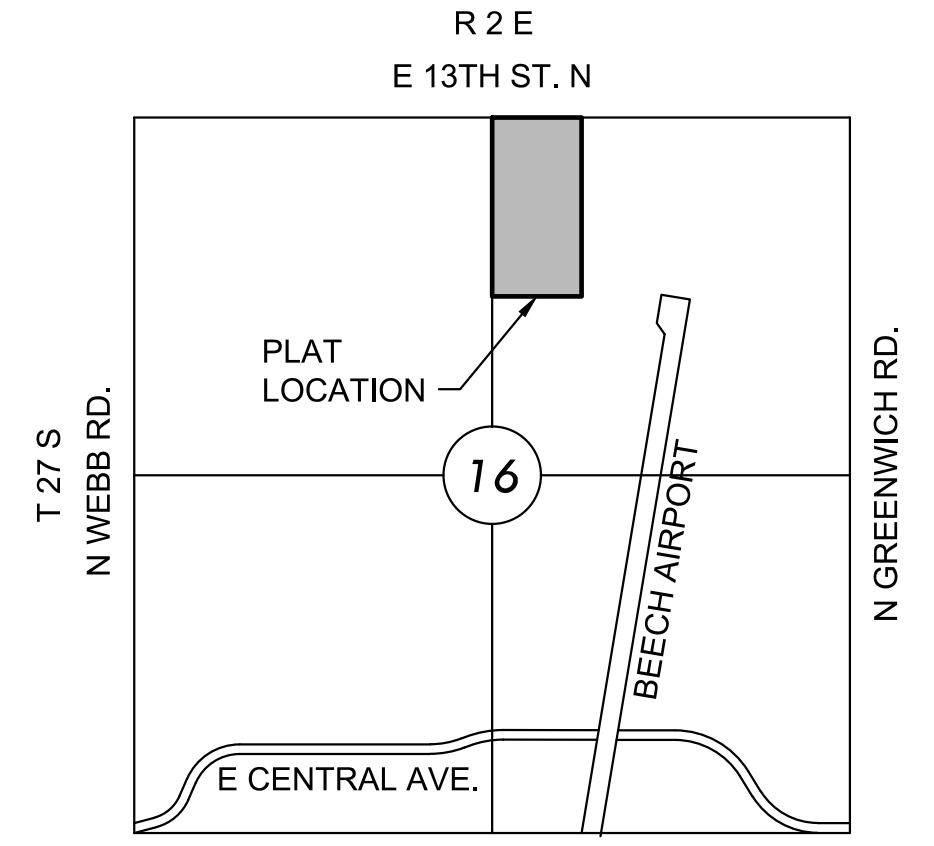
## GENERAL NOTES

- THE CONTRACTOR SHALL COMPLY WITH ALL APPLICABLE SAFETY REGULATIONS. ALL CONSTRUCTION SHALL BE COMPLETED FOLLOWING CURRENT CITY STANDARD SPECIFICATIONS AND SPECIAL PROVISIONS.
- CONTRACTOR WILL BE REQUIRED TO PROVIDE NOTICE TO UTILITY COMPANIES A MINIMUM OF SEVENTY-TWO (72) HOURS PRIOR TO ANY EXCAVATION, AS FOLLOWS:  
 KANSAS ONE-CALL 687-2470  
 THE CONTRACTOR MUST NOTIFY THE FOLLOWING IN CASE OF AN EMERGENCY:  
 AT&T 1-800-246-8464  
 BLACK HILLS ENERGY (GAS) 1-800-694-6989  
 CITY OF WICHITA WATER & SEWER 1-316-219-8921  
 CITY OF WICHITA STORMWATER 1-316-268-4090  
 CITY OF WICHITA TRAFFIC 1-316-268-4034  
 COX COMMUNICATIONS 1-888-249-3530  
 KANSAS GAS SERVICE 1-888-482-4950  
 EVERGY 1-800-544-4857
- UTILITY SERVICE LINES, POLES, ETC. ARE TO BE ADJUSTED AS NECESSARY BY OTHERS PRIOR TO CONSTRUCTION UNLESS THE PLANS SPECIFICALLY CALL FOR THEIR ADJUSTMENT BY THE CONTRACTOR OR UNLESS THE PLANS SPECIFICALLY IDENTIFY A UTILITY TO BE ADJUSTED BY ITS OWNER DURING CONSTRUCTION. EXISTING UTILITIES AND THEIR LOCATION, AS SHOWN ON THE PLANS, REPRESENT THE BEST INFORMATION OBTAINABLE FOR DESIGN. THE CONTRACTOR WILL BE REQUIRED TO WORK AROUND EXISTING UTILITIES WITHIN THE RIGHT-OF-WAY WHICH DO NOT CONFLICT WITH PROPOSED CONSTRUCTION.
- RUBBLE FROM THE REMOVAL OF MISCELLANEOUS STRUCTURES AND EXCESS EXCAVATION WHICH IS TO BE WASTED SHALL BE DISPOSED OF ON SITES TO BE PROVIDED BY THE CONTRACTOR. THESE SITES SHALL BE APPROVED BY THE ENGINEER AS TO SUITABILITY, APPEARANCE AND SITE LOCATION. LOCATIONS, IN THE OPINION OF THE ENGINEER, THAT WILL LEAVE AN UNSIGHTLY APPEARANCE WILL NOT BE APPROVED. ALL DISPOSAL SITES MUST BE APPROVED BY THE KANSAS DEPARTMENT OF HEALTH AND ENVIRONMENT. MATERIAL EITHER STOCKPILED OR DISPOSED OF IN A FLOOD PLAIN WILL REQUIRE A KANSAS STATE BOARD OF AGRICULTURE PERMIT. ANY MATERIAL DUMPED IN WATERS OF THE UNITED STATES OR WETLANDS IS SUBJECT TO U.S. CORPS OF ENGINEERS PERMITTING REGULATIONS. ANY MATERIAL BURIED OR STOCKPILED BEYOND APPROVED CONSTRUCTION LIMITS WILL REQUIRE ADDITIONAL ARCHAEOLOGICAL INVESTIGATIONS UNLESS BURIED IN A PREVIOUSLY APPROVED BORROW LOCATION.
- TREES AND SHRUBS IN PUBLIC RIGHT-OF-WAY WHICH ARE IN DIRECT CONFLICT WITH PROPOSED NEW CONSTRUCTION SHALL BE REMOVED BY THE CONTRACTOR WITH THE CITY ENGINEER'S APPROVAL. TREES AND SHRUBS WHICH ARE NOT IN DIRECT CONFLICT WITH PROPOSED NEW CONSTRUCTION SHALL BE SAVED AND PROTECTED FROM DAMAGE.
- THE CONTRACTOR SHALL GIVE ALL PROPERTY OWNERS AND/OR TENANTS OF DEVELOPED PROPERTY ABUTTING THE CONSTRUCTION OF THIS PROJECT A MINIMUM OF TEN (10) DAYS NOTICE PRIOR TO START OF CONSTRUCTION.
- THE CONTRACTOR SHALL BE RESPONSIBLE FOR PRESERVING PROPERTY IRONS. THE CONTRACTOR WILL BE REQUIRED TO RE-ESTABLISH ANY PROPERTY IRONS WHICH ARE DAMAGED OR DESTROYED BY HIS CONSTRUCTION OPERATIONS. SUCH IRONS SHALL BE RE-ESTABLISHED BY A LICENSED LAND SURVEYOR IN ACCORDANCE WITH STATE LAWS.
- THE ENGINEERING DIVISION SHALL FIELD LOCATE WATER VALVES ONE TIME DURING CONSTRUCTION WHEN REQUESTED BY THE CONTRACTOR. IT SHALL BE THE CONTRACTOR'S RESPONSIBILITY TO PRESERVE SUCH FIELD LOCATIONS DURING THE CONSTRUCTION PROCESS. WATER VALVES, VALVE BOXES OR FIRE HYDRANTS DAMAGED DURING CONSTRUCTION SHALL BE REPAIRED BY CONTRACTOR AT HIS OWN EXPENSE. VALVE BOXES AND WATER METERS WITHIN THE PROJECT LIMITS SHALL BE ADJUSTED TO MATCH FIELD GRADES BY THE CONTRACTOR.
- IF TRAFFIC WILL BE IMPACTED BY CONSTRUCTION, A TRAFFIC CONTROL PLAN MUST BE SUBMITTED AND APPROVED BY THE CITY TRAFFIC ENGINEER AT [traffic@wichita.gov](mailto:traffic@wichita.gov) BEFORE CONSTRUCTION CAN BEGIN. THE CONTRACTOR SHALL BE RESPONSIBLE FOR ALL TRAFFIC CONTROL MEASURES TO FACILITATE CONSTRUCTION. ALL CONSTRUCTION ZONE MARKINGS AND SIGNAGE SHALL CONFORM TO THE LATEST VERSION OF THE MANUAL ON UNIFORM TRAFFIC CONTROL DEVICES (MUTCD) AS PUBLISHED BY THE US DEPT. OF TRANSPORTATION, FEDERAL HIGHWAY ADMINISTRATION. ALL COSTS ASSOCIATED WITH CONSTRUCTION MARKINGS AND SIGNAGE SHALL BE THE CONTRACTOR'S RESPONSIBILITY.
- ALL AREAS DISTURBED DURING CONSTRUCTION THAT WILL NOT BE UNDER PROPOSED PAVEMENT SHALL BE SEEDED AND MULCHED. COST SHALL BE CONSIDERED SUBSIDIARY TO PROJECT SEEDING. SEEDING TO BE: ANNUAL RYE @ 150 LBS./ACRE & SLOW RELEASE @ 150 LBS./ACRE
- CONTRACTOR SHALL LIMIT THE EXTENT OF TRENCH OPEN OVERNIGHT AND WEEKENDS TO LESS THAN 50 FEET.
- EXISTING UTILITIES AND THEIR LOCATION, AS SHOWN ON THE PLANS REPRESENT THE BEST INFORMATION OBTAINABLE FOR DESIGN. LOCATION INFORMATION HAS BEEN OBTAINED FROM THE VARIOUS COMPANIES AND IS EITHER FROM COMPANY UTILITY DRAWINGS OR COMPANY PROVIDED FIELD LOCATIONS. THE PLAN LOCATIONS SHOWN ARE NOT GUARANTEED. ADDITIONAL EXISTING UTILITIES MAY ALSO BE ENCOUNTERED.
- A PORTION OF EXCESS EXCAVATED MATERIAL SHALL BE MOUNDING AROUND MANHOLES WHICH EXTEND MORE THAN ONE (1) FOOT ABOVE THE EXISTING GROUND. SUCH MOUND SHALL BE CONSTRUCTED WITH NEW DEVELOPMENT A SIX (6) FOOT DIAMETER FLAT TOP WITH 4 TO 1 SIDE SLOPES DOWN TO THE ORIGINAL GROUND. THE ELEVATION OF THE FLAT TOP OF THE MOUND SHALL BE 0.4 FOOT BELOW THE TOP OF THE MANHOLE.
- CONTRACTOR SHALL PROVIDE POSITIVE DRAINAGE AWAY FROM ALL MANHOLE COVERS.
- ALL STUBS AND PLUGGED PIPES SHALL BE LOCATED WITH GREEN PLASTIC TAPE IN THE SAME MANNER AS RISERS.
- CONNECTING TO EXISTING MANHOLES:  
 PRIOR TO LAYING SEWER LINES USING EXISTING STUBS IN EXISTING MANHOLES, THE CONTRACTOR SHALL EXPOSE AND VERIFY THE ELEVATION, GRADE AND ALIGNMENT OF EXISTING STUBS AND NOTIFY THE ENGINEER OF ANY DEVIATION FROM THE PLANS. WHERE CONNECTION TO AN EXISTING MANHOLE THAT DOES NOT HAVE AN EXISTING STUB OR THE STUB IS UNUSABLE DUE TO ELEVATION GRADE OR ALIGNMENT, THE CONTRACTOR SHALL BORE CUT INTO EXISTING MANHOLE WALL TO MAKE CONNECTION USING APPROVED WATER STOP GASKET, AND RESHAPE THE EXISTING MANHOLE INVERT TO PROVIDE SMOOTH FLOW. THE COST TO CONNECTING TO EXISTING MANHOLES IS INCIDENTAL TO THE PROJECT.
- THE CONTRACTOR SHALL PREVENT ANY CONSTRUCTION DEBRIS FROM ENTERING THE EXISTING SANITARY SEWER DURING CONSTRUCTION.
- THE CONTRACTOR SHALL BE RESPONSIBLE FOR MAINTAINING CONTINUOUS FLOW OF SEWAGE THROUGH CONSTRUCTION. CONTRACTOR'S PROPOSED METHOD FOR MAINTAINING SEWAGE FLOW SHALL BE SUBMITTED AND APPROVED BY THE SEWER MAINTENANCE DIVISION (316-268-4073) PRIOR TO STARTING AND BY-PASSING OF SEWAGE FLOWS.
- ALL TRAFFIC CONTROL DEVICES IN THE WORK ZONE (INCLUDING MARKINGS AND SIGNS) AND THEIR INSTALLATION AND MAINTENANCE SHALL COMPLY WITH THE LATEST EDITION OF THE MANUAL ON UNIFORM TRAFFIC CONTROL DEVICES (MUTCD). ALL TRAFFIC CONTROL DEVICES IN THE TRAVELED WAY OR CLEAR ZONE SHALL BE CRASHWORTHY (NCHRP REPORT 350 OR MASH COMPLIANT).  
[http://safety.fhwa.dot.gov/roadwaydept/policy\\_guide/road\\_hardware/wzd](http://safety.fhwa.dot.gov/roadwaydept/policy_guide/road_hardware/wzd)
- ALL CONSTRUCTION EQUIPMENT, INCLUDING VEHICLES, MATERIALS, AND DEBRIS, SHALL BE STORED OUTSIDE OF THE CLEAR ZONE. WHERE THIS CANNOT BE ACHIEVED THE CONTRACTOR SHALL PLACE APPROPRIATE SIGNS, SUBJECT IDENTIFIERS, AND/OR BARRICADES IN COMPLIANCE WITH MUTCD.
- EXCEPT WHEN REQUIRED FOR SAFETY, TRAFFIC CONTROL SHALL NOT BLOCK ANY LANES OR SIDEWALKS WHEN WORK IS NOT BEING PERFORMED.
- FOLLOW THE LINK BELOW FOR DETAILS ON SPECIFIC CITY OF WICHITA STANDARD DETAILS:  
<http://www.wichita.gov/PWU/Pages/Regulations.aspx>
- DEVELOPER FOR THIS PROJECT IS:  
 LAHAM DEVELOPMENT  
 150 N MARKET  
 WICHITA, KS, 67202  
 GEORGE E. LAHAM, II  
 316-292-3950

# PHASE 1 SANITARY SEWER IMPROVEMENTS TO SERVE VERANDA SECOND ADDITION

THE CITY OF WICHITA, KANSAS  
 GARY JANZEN, P.E. - CITY ENGINEER

PROJECT NO. 468-2022-000361  
 ORG CODE 47266122  
 MUNIS NO. E2045



## VICINITY MAP

No Scale

## INDEX TO DRAWINGS

SHEET NO.	DESCRIPTION
01	TITLE SHEET
02-05	SANITARY DETAILS
06	LINE 1
07	LINE 2
08	BUBBLE MAP
09-13	BMP DETAILS
14	FINAL PLAT

## BENCHMARKS

CONTROL POINTS:  
 CP 2  
 "+" CUT IN FRONT CENTER CURB INLET WITH MAGNAIL IN CENTER OF "+" CUT  
 N=1694401.257, E=1683542.233  
 ELEV: 1378.30

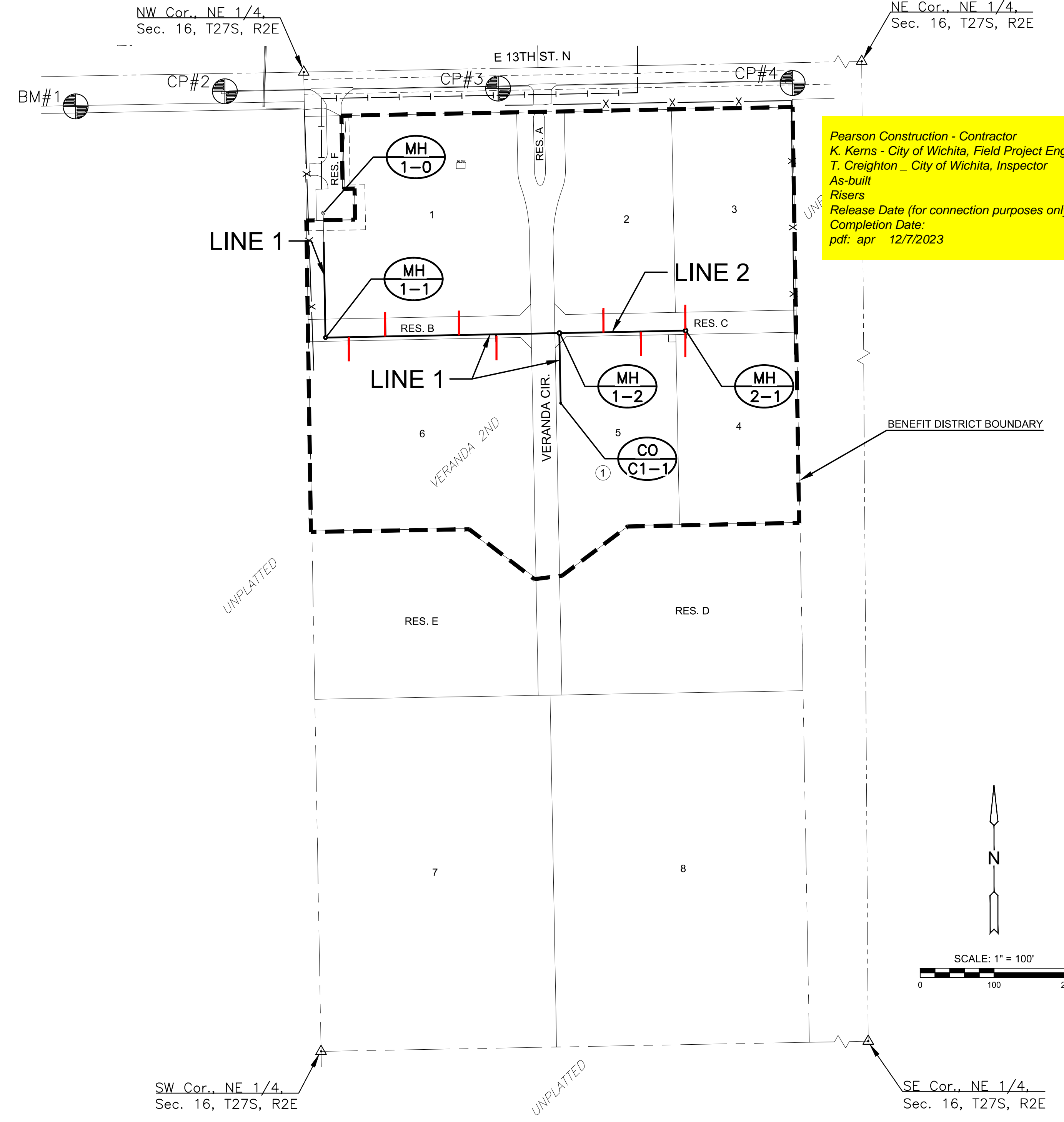
CP 3  
 MAGNAIL & WASHER SE CORNER CURB INLET  
 N=1694405.429, E=1683912.609  
 ELEV: 1383.39

CP 4  
 MAGNAIL & WASHER SE CORNER CURB INLET  
 N=1694412.863, E=1684311.498  
 ELEV: 1390.30

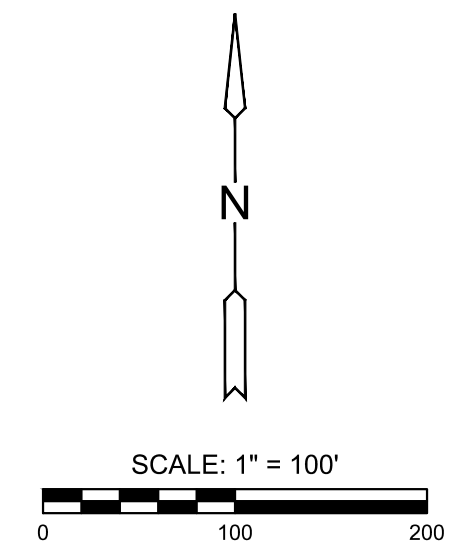
BENCHMARKS:  
 BM 1  
 SQ CUT ON HDWL S. SIDE OF 13TH  
 N=1694381.300, E=1683340.242  
 ELEV: 1377.82

DATUM:  
 THE HORIZONTAL DATUM IS BASED ON THE KANSAS COORDINATE SYSTEM OF 1983, NAD83(2011), EPOCH:2010.0000, SOUTH ZONE. COORDINATES SHOWN HAVE BEEN MODIFIED TO THE GROUND USING A COMBINED ADJUSTMENT FACTOR OF 1.0001200144. STATE PLANE COORDINATES CAN BE CALCULATED BY MULTIPLYING THE SHOWN VALUES BY 0.99988.

ALL ELEVATIONS SHOWN ARE BASED ON THE NAVD 88 VERTICAL DATUM, GEOID18.



Pearson Construction - Contractor  
 K. Kerns - City of Wichita, Field Project Engineer  
 T. Creighton - City of Wichita, Inspector  
 As-built  
 Risers  
 Release Date (for connection purposes only): 12/5/2023  
 Completion Date:  
 pdf: apr 12/7/2023



PUBLIC SANITARY SEWER PLANS FOR  
**VERANDA SECOND ADDITION**  
 PHASE 1

©2023  
 MKEC Engineering  
 All Rights Reserved  
 www.mkec.com  
 These drawings and their contents, including, but not limited to, all concepts, designs, & ideas are the exclusive property of MKEC Engineering (MKEC), and may not be used or reproduced in any way without the express consent of MKEC.

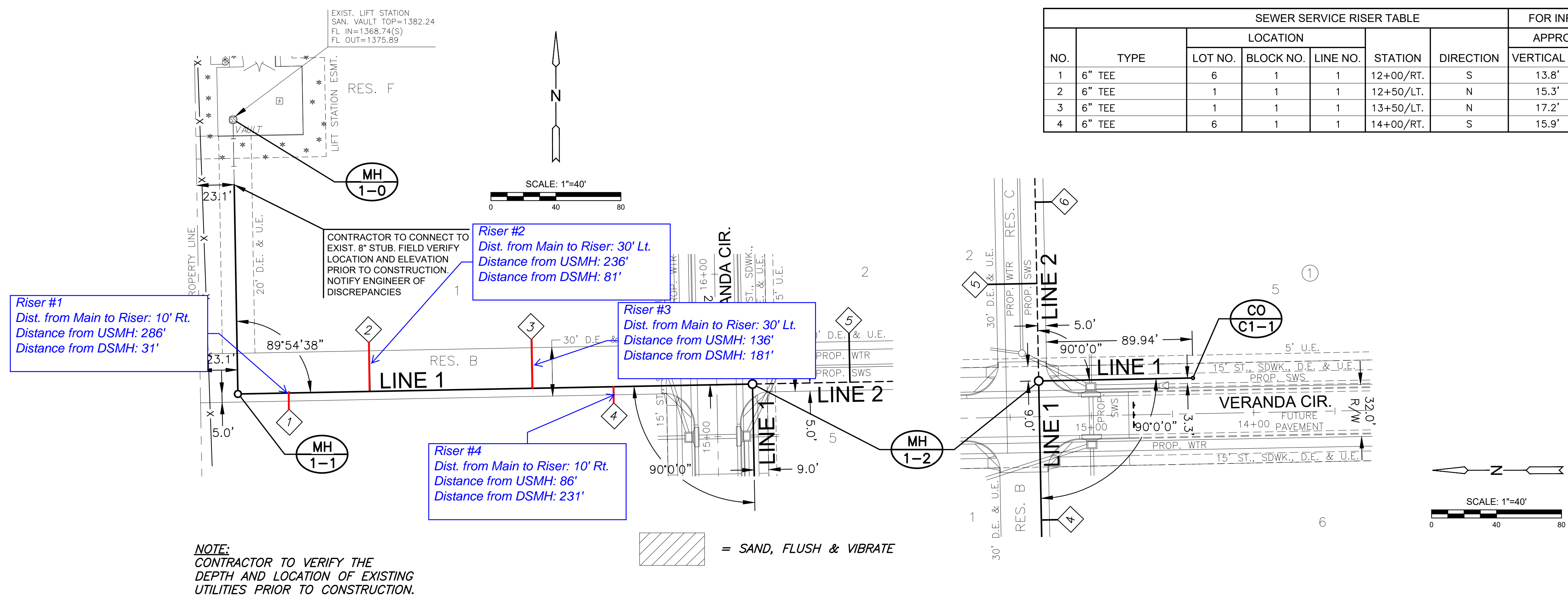
## TITLE SHEET

PROJECT NO.	468-2022-000361	
DATE	FEB 2023	
SCALE	1" = 100'	
DESIGNED	DRAWN	CHECKED
MKB	LAL	SPE
NO.	REVISION	DATE
SHEET NO.		
01 OF 14		



PLOTTED: Monday, February 06, 2023 @ 09:31AM

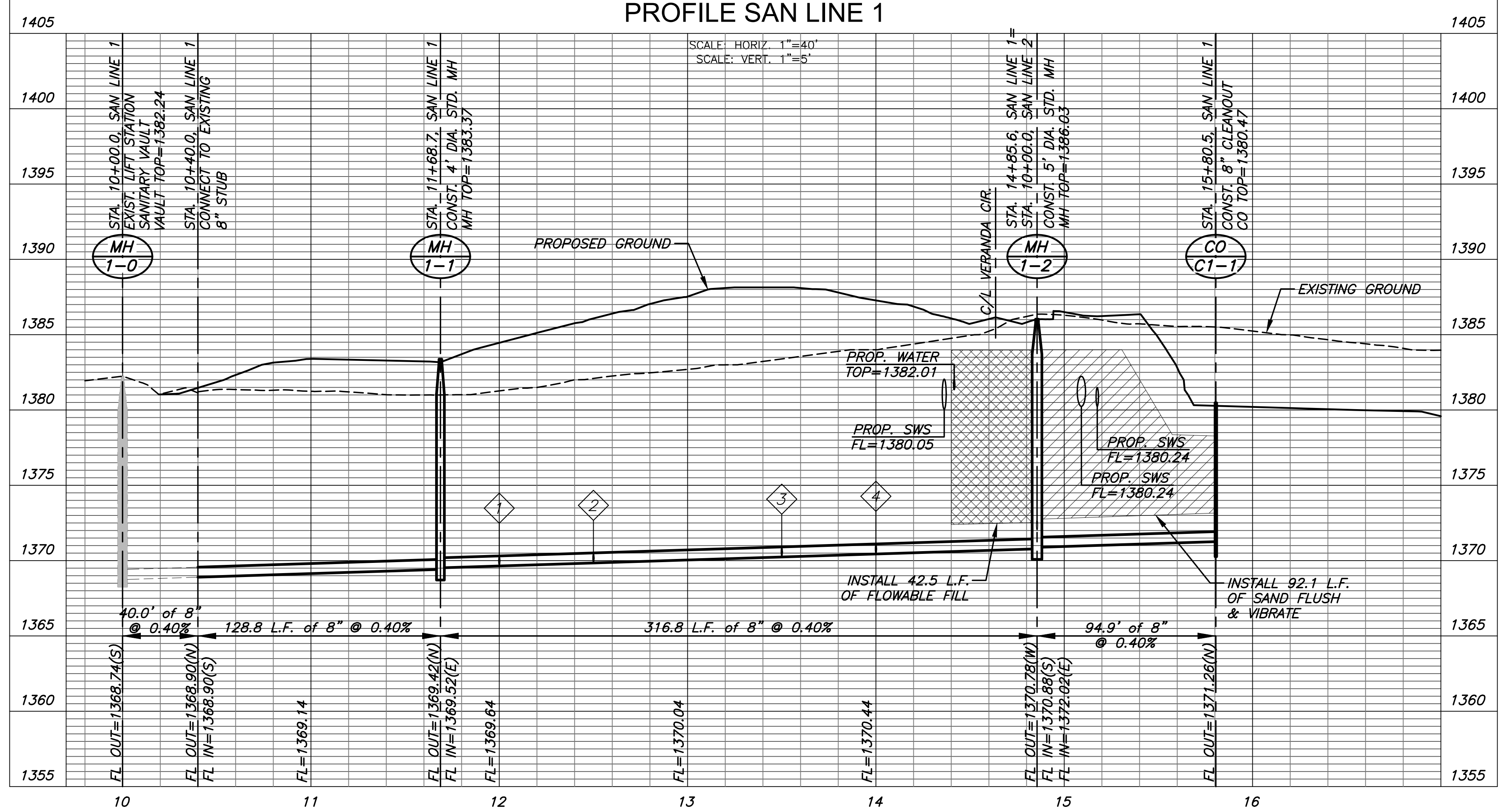
J:\PROJECTS\2017\1010370\_VERANDA.ADDL\_17270\_CAD\SH1505\_CIVIL\SAN2ND ADDITION\17370-05-2203.DWG



**NOTE:**  
CONTRACTOR TO VERIFY THE DEPTH AND LOCATION OF EXISTING UTILITIES PRIOR TO CONSTRUCTION.

= SAND, FLUSH & VIBRATE

PLAN SAN LINE 1  
PROFILE SAN LINE 1

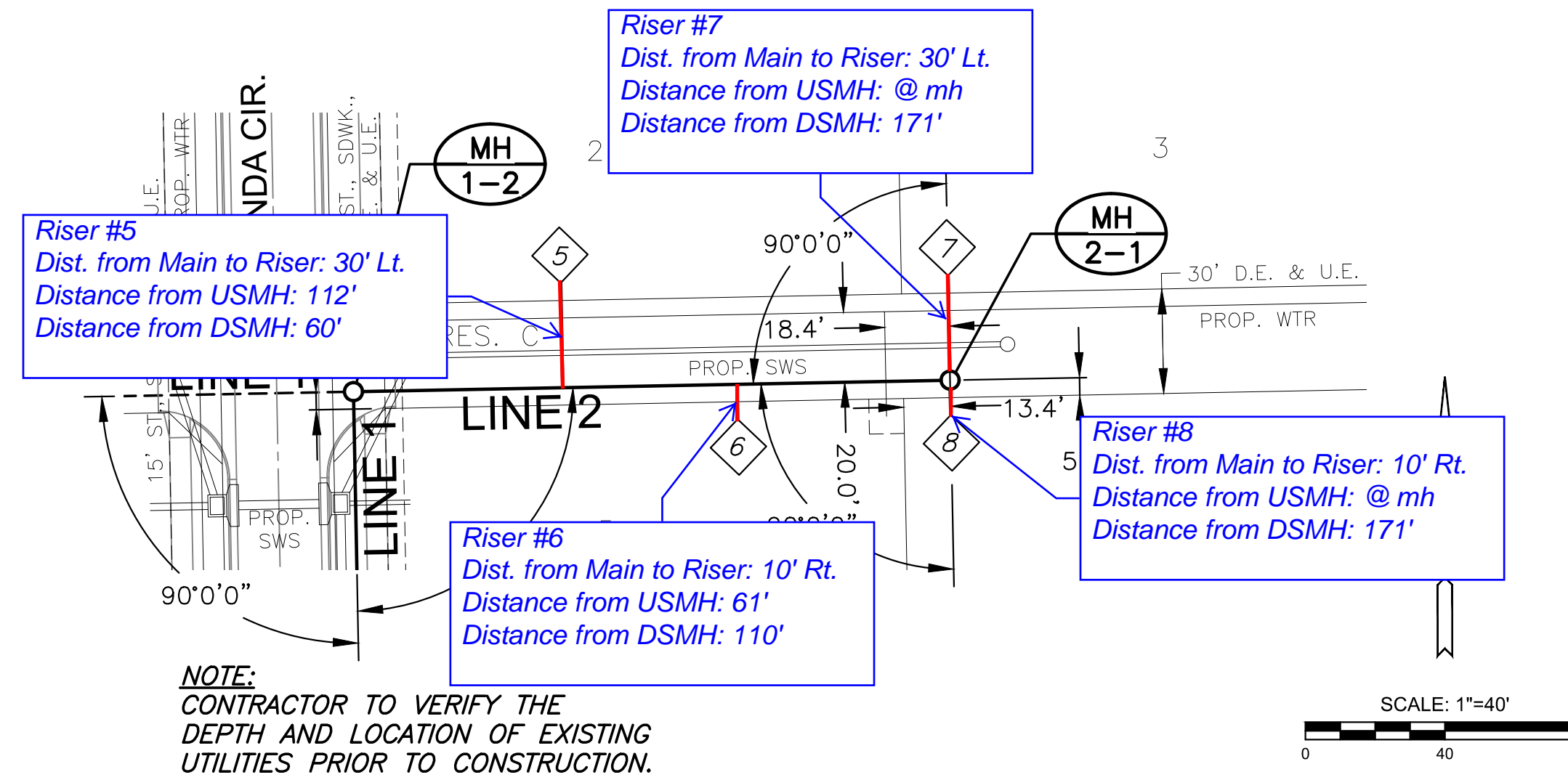


PUBLIC SANITARY SEWER PLANS FOR  
**VERANDA SECOND ADDITION**  
PHASE 1

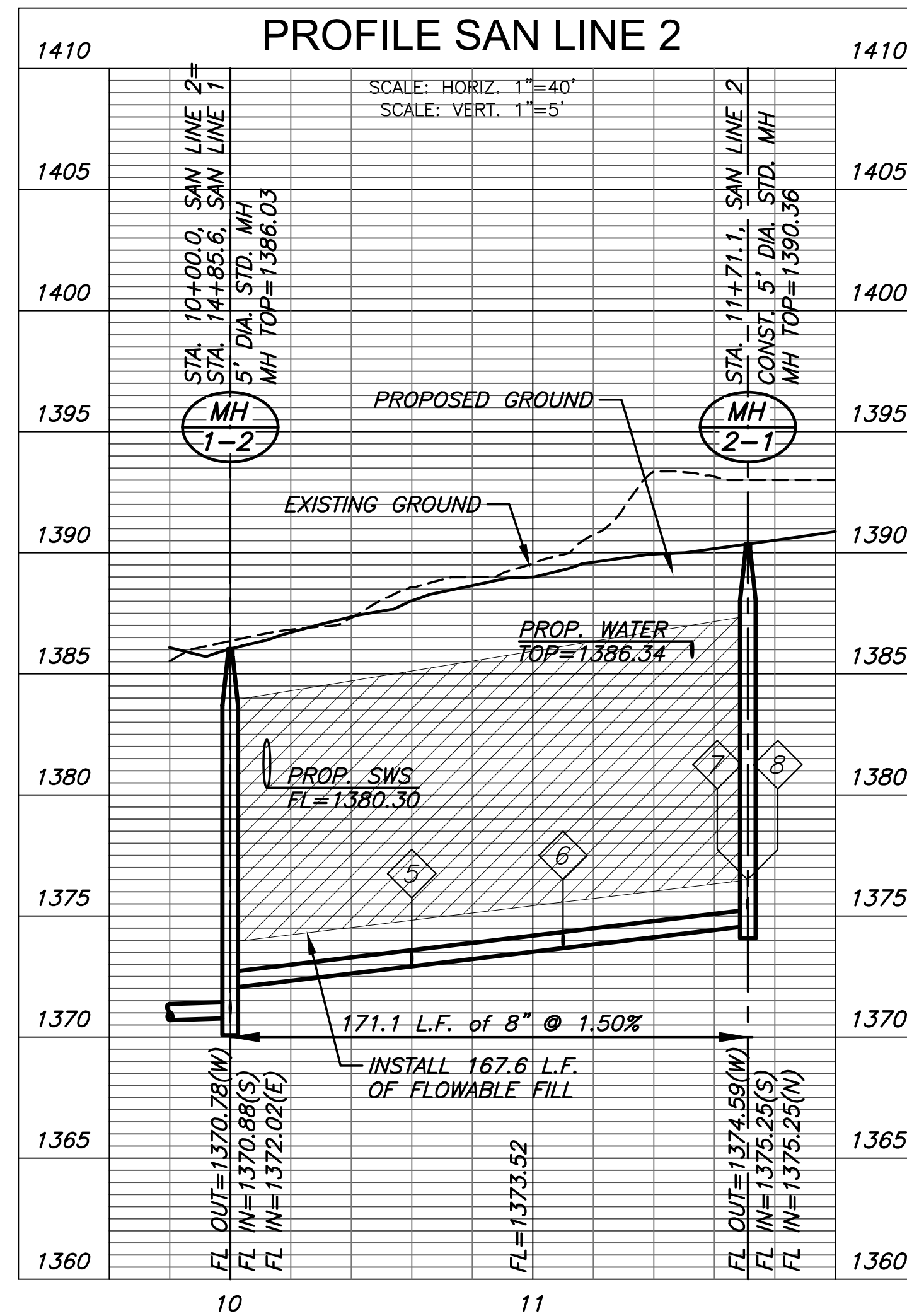
©2023 MKEC Engineering All Rights Reserved  
These drawings and their contents, including, but not limited to, all concepts, designs, & ideas are the exclusive property of MKEC Engineering (MKEC), and may not be used or reproduced in any way without the express consent of MKEC.

SAN LINE 1	
PROJECT NO.	468-2022-000361
DATE	FEB 2023
SCALE	1" = 40'
DESIGNED	DRAWN
MKB	LAL
CHECKED	SPE
NO.	REVISION
DATE	
SHEET NO.	
06 OF 14	

NO.	TYPE	SEWER SERVICE RISER TABLE					FOR INFORMATION ONLY	
		LOCATION			STATION	DIRECTION	APPROXIMATE LENGTH	
		LOT NO.	BLOCK NO.	LINE NO.			VERTICAL (FT)	HORIZONTAL (FT)
5	6" TEE	2	1	2	10+60/LT.	N	14.0'	30.0'
6	6" TEE	5	1	2	11+10/RT.	S	14.0'	10.0'
7	6" MH CONNECTION	3	1	2	11+71/LT.	N	14.0'	30.0'
8	6" MH CONNECTION	4	1	2	11+71/RT.	S	14.0'	10.0'



PLAN SAN LINE 2  
PROFILE SAN LINE 2



PUBLIC SANITARY SEWER PLANS FOR  
**VERANDA SECOND ADDITION**  
PHASE 1

©2023  
MKEC Engineering  
All Rights Reserved  
www.mkec.com  
These drawings and their contents, including, but not limited to, all concepts, designs, & ideas are the exclusive property of MKEC Engineering (MKEC), and may not be used or reproduced in any way without the express consent of MKEC.

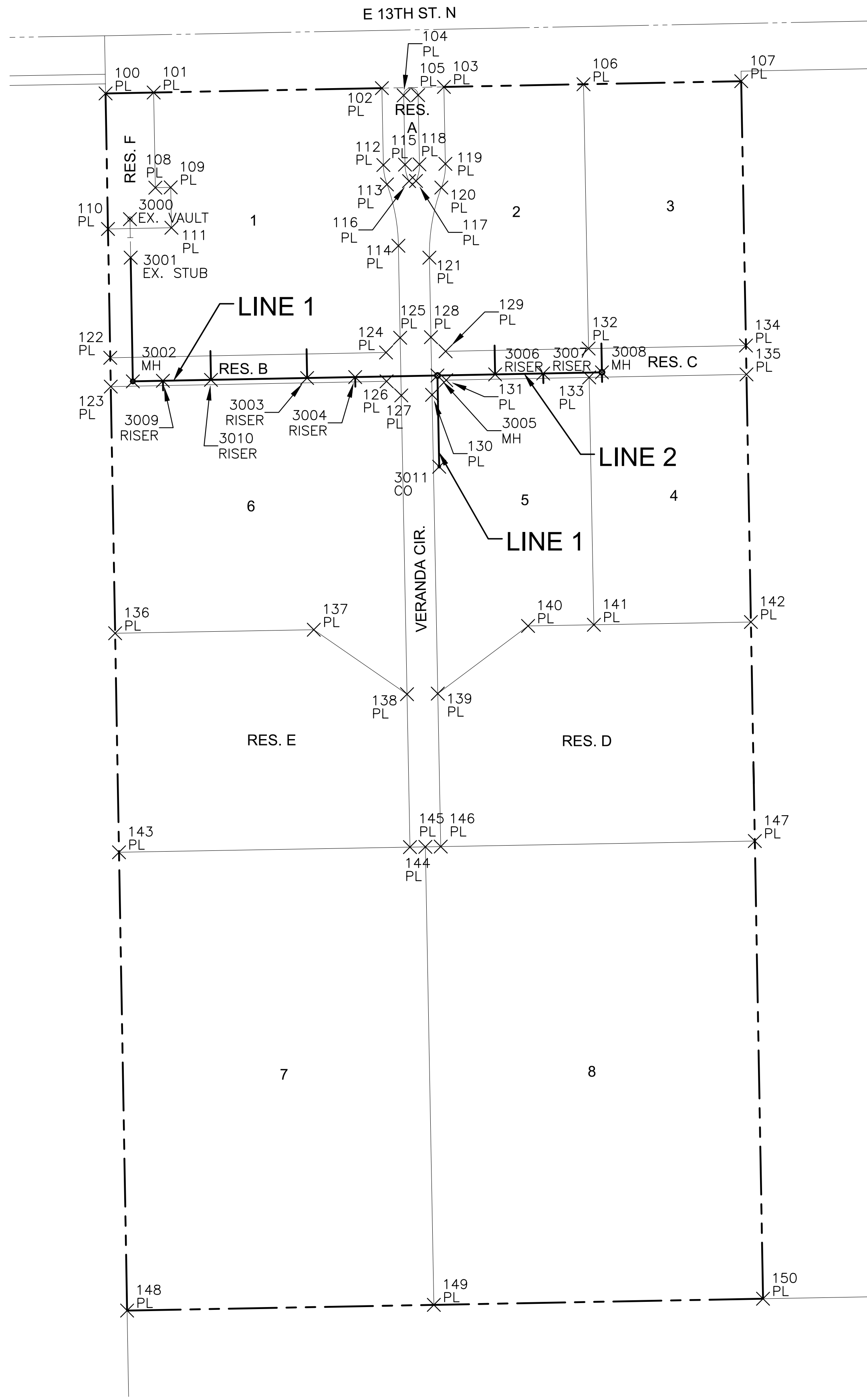
**SAN LINE 2**

PROJECT NO.	468-2022-000361
DATE	FEB 2023
SCALE	1" = 40'
DESIGNED	MKB
DRAWN	LAL
CHECKED	SPE

NO.	REVISION	DATE

SHEET NO.

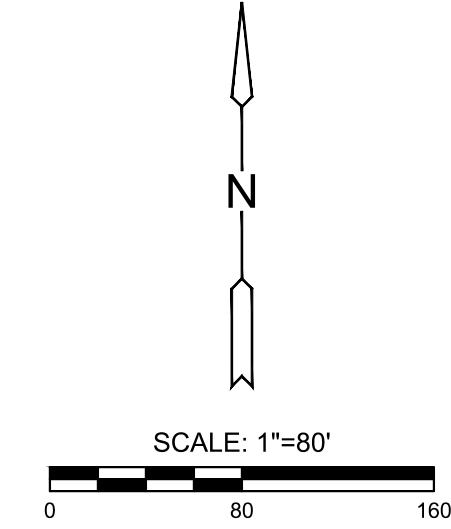
J:\PROJECTS\2017\10\10370\_VERANDA.ADDL\_17370\_CAD\SHS\505\_CIVIL\SAN2ND.ADDITION\17370-05-2500.DWG  
 PLOTTED: Monday, February 06, 2023 @ 09:10AM



PLAT POINTS			
Point #	Northing	Easting	Desc.
100	1694367.70	1683650.31	PL
101	1694368.66	1683700.30	PL
102	1694373.23	1683937.68	PL
103	1694374.48	1684002.17	PL
104	1694365.67	1683960.33	PL
105	1694365.96	1683975.32	PL
106	1694377.27	1684147.32	PL
107	1694380.43	1684311.36	PL
108	1694269.68	1683702.06	PL
109	1694269.99	1683718.05	PL
110	1694226.72	1683652.81	PL
111	1694227.99	1683718.80	PL
112	1694293.23	1683939.22	PL
113	1694273.09	1683942.97	PL
114	1694209.27	1683954.84	PL
115	1694293.66	1683961.71	PL
116	1694276.54	1683965.93	PL
117	1694276.68	1683973.15	PL
118	1694293.95	1683976.71	PL
119	1694294.47	1684003.71	PL
120	1694269.79	1683999.50	PL
121	1694196.86	1683987.08	PL
122	1694092.74	1683655.18	PL
123	1694062.75	1683655.71	PL
124	1694098.27	1683941.97	PL
125	1694113.55	1683956.68	PL

PLAT POINTS			
Point #	Northing	Easting	Desc.
126	1694068.27	1683942.55	PL
127	1694053.56	1683957.84	PL
128	1694114.17	1683988.67	PL
129	1694099.46	1684003.96	PL
130	1694054.18	1683989.83	PL
131	1694069.46	1684004.54	PL
132	1694102.32	1684152.61	PL
133	1694072.33	1684153.19	PL
134	1694105.47	1684316.29	PL
135	1694075.48	1684316.82	PL
136	1693806.18	1683660.25	PL
137	1693809.84	1683866.83	PL
138	1693742.79	1683963.82	PL
139	1693743.40	1683995.81	PL
140	1693813.78	1684089.67	PL
141	1693814.99	1684158.15	PL
142	1693817.88	1684321.44	PL
143	1693578.35	1683664.28	PL
144	1693583.70	1683966.88	PL
145	1693583.99	1683982.88	PL
146	1693584.27	1683998.88	PL
147	1693590.05	1684325.51	PL
148	1693101.62	1683672.71	PL
149	1693107.57	1683991.71	PL
150	1693113.96	1684334.04	PL

SANITARY POINTS			
Point #	Northing	Easting	Desc.
3000	1694236.94	1683675.70	EX. VAULT
3001	1694196.94	1683676.41	EX. STUB
3002	1694068.19	1683678.69	MH
3003	1694071.68	1683859.92	RISER
3004	1694072.64	1683909.91	RISER
3005	1694074.29	1683995.44	MH
3006	1694075.45	1684055.43	RISER
3007	1694076.41	1684105.42	RISER
3008	1694077.58	1684166.49	MH
3009	1694068.80	1683709.94	RISER
3010	1694069.75	1683759.93	RISER
3011	1693979.37	1683997.27	CO



**CONTROL POINTS**

CONTROL POINTS:  
 CP 2  
 N: 1694401.257 E: 1683542.233 EL: 1378.300  
 +CUT IN FRONT CENTER CURB INLET WITH MAGNAIL IN CENTER OF +CUT

CP 3  
 N: 1694405.429 E: 1683912.609 EL: 1383.390  
 MAGNAIL & WASHER SE CORNER CURB INLET

CP 4  
 N: 1694412.863 E: 1684311.498 EL: 1390.300  
 MAGNAIL & WASHER SE CORNER CURB INLET

DATUM:  
 THE HORIZONTAL DATUM IS BASED ON THE KANSAS COORDINATE SYSTEM OF 1983, NAD83(2011), EPOCH:2010.0000, SOUTH ZONE. COORDINATES SHOWN HAVE BEEN MODIFIED TO THE GROUND USING A COMBINED ADJUSTMENT FACTOR OF 1.0001200144. STATE PLANE COORDINATES CAN BE CALCULATED BY MULTIPLYING THE SHOWN VALUES BY 0.99988.

ALL ELEVATIONS SHOWN ARE BASED ON THE NAVD 88 VERTICAL DATUM, GEOID18.

NOTE:  
 ALL CONTROL POINTS SHOWN HAVE ELEVATIONS ESTABLISHED USING STANDARD SURVEYING PROCEDURES AND CAN BE USED AS TEMPORARY BENCHMARKS. WHEN USING A CONTROL POINT AS A TEMPORARY BENCHMARK, IT IS RECOMMENDED THAT CROSS-CHECKS BE MADE TO OTHER CONTROL POINTS OR BENCHMARKS TO CONFIRM ELEVATIONS PRIOR TO USE.

EVERY ATTEMPT HAS BEEN MADE TO INSURE ALL COORDINATE VALUES SHOWN ARE AN ACCURATE AND TRUE REPRESENTATION OF THE CURRENT PLANS. ALL VALUES ARE TO BE CONFIRMED WITH THE FINAL SIGNED PLAN SET BEFORE USE.



PUBLIC SANITARY SEWER PLANS FOR  
**VERANDA SECOND ADDITION**  
 PHASE 1

©2023  
 MKEC Engineering  
 All Rights Reserved  
 www.mkec.com  
 These drawings and their contents, including, but not limited to, all concepts, designs, & ideas are the exclusive property of MKEC Engineering (MKEC), and may not be used or reproduced in any way without the express consent of MKEC.

**BUBBLE MAP**

PROJECT NO.	468-2022-000361	
DATE	FEB 2023	
SCALE	1" = 80'	
DESIGNED	MKB	
DRAWN	LAL	
CHECKED	SPE	
NO.	REVISION	DATE