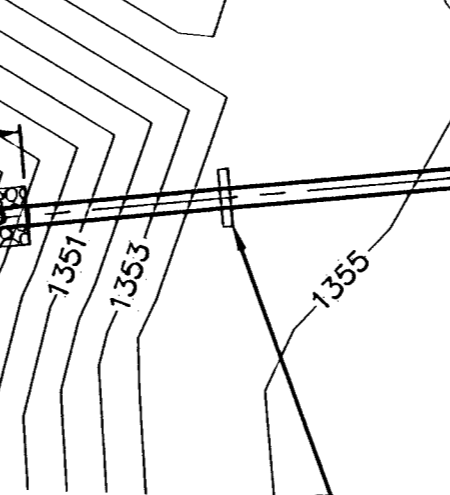
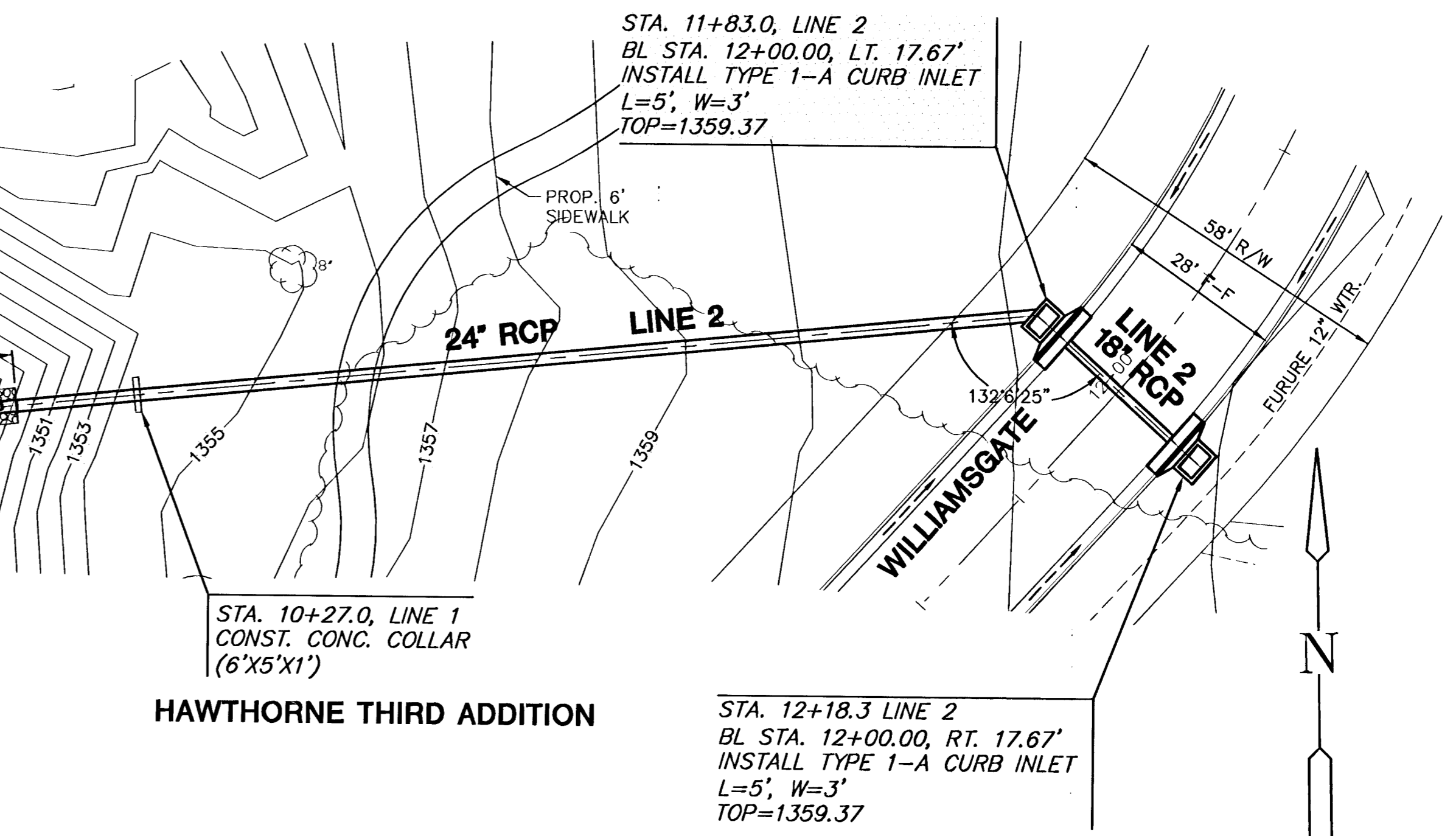
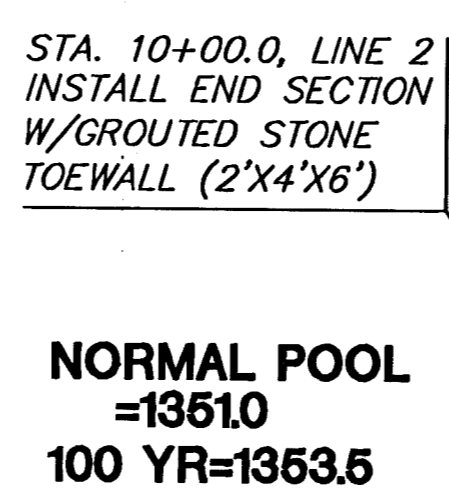
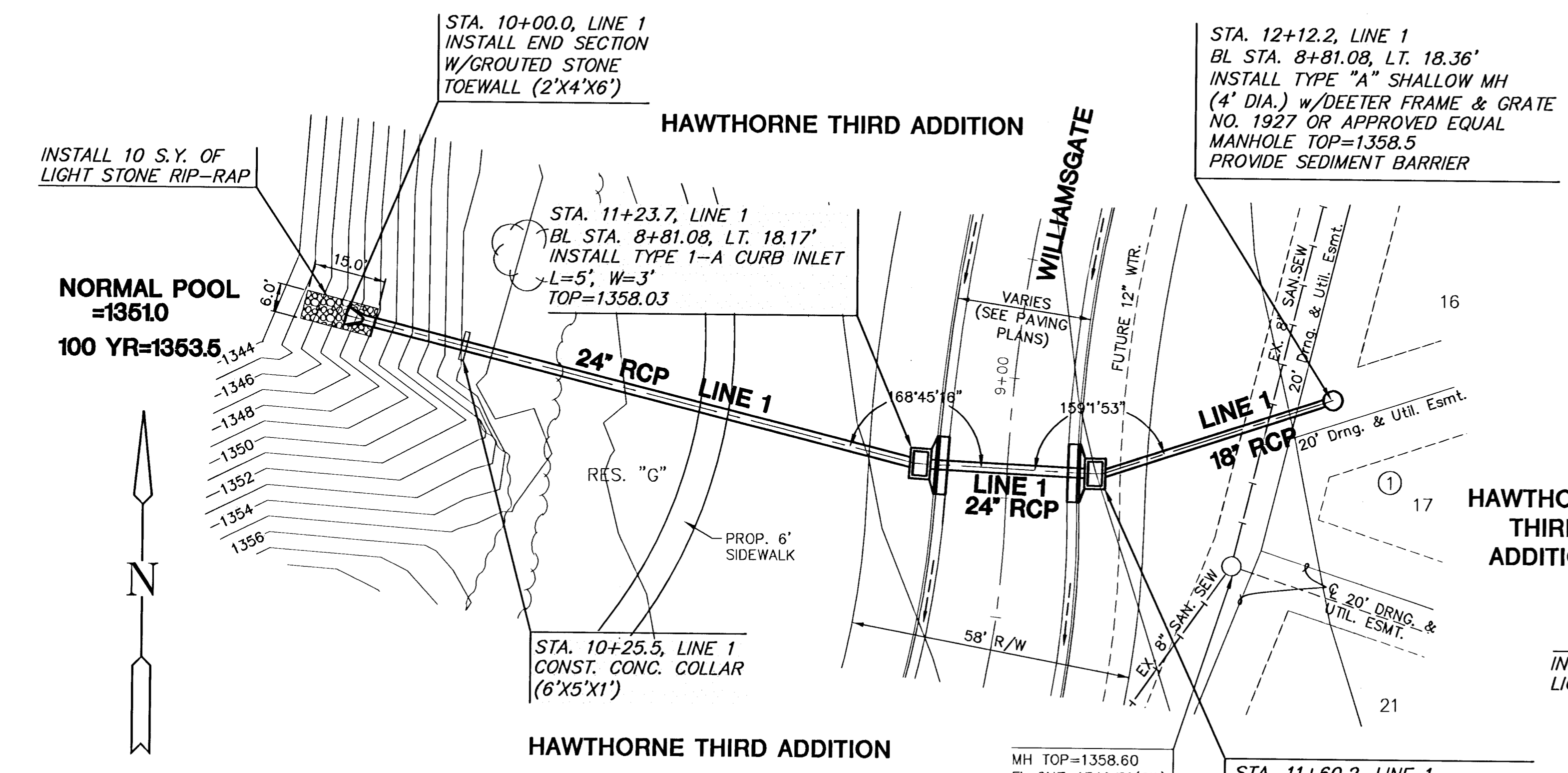


**HAWTHORNE ADDITION
WILLIAMSGATE PHASE 3
STORM WATER SEWER PLANS**

HAWTHORNE THIRD ADDITION



NOTE:
CONTRACTOR TO COORDINATE TREE REMOVAL/TRIMMING WITH ENGINEER/OWNER. NO TREES SHALL BE REMOVED WITHOUT PRIOR APPROVAL BY ENGINEER AND/OR OWNER.

NOTE:
DISCHARGE PIPE FROM INLET MAY NEED TO BE ADJUSTED 5" FROM STARTING POINT TO AVOID TREE CONFLICT. COST SUBSIDIARY TO PROJECT.

PLAN LINE 1
SCALE: 1"=20'

PLAN LINE 2
SCALE: 1"=20'

▨ = FLOWABLE FILL
▩ = TREE REMOVAL

PROFILE LINE 1
SCALE: HORIZ. 1"=20'
SCALE: VERT. 1"=5'

PROFILE LINE 2
SCALE: HORIZ. 1"=20'
SCALE: VERT. 1"=5'

