

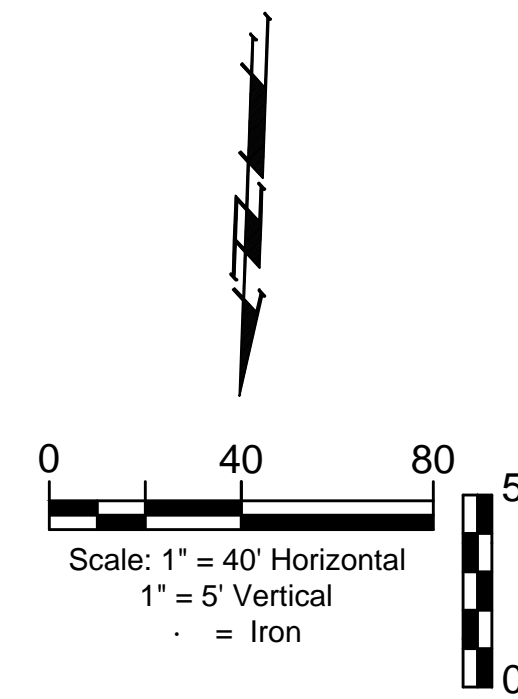
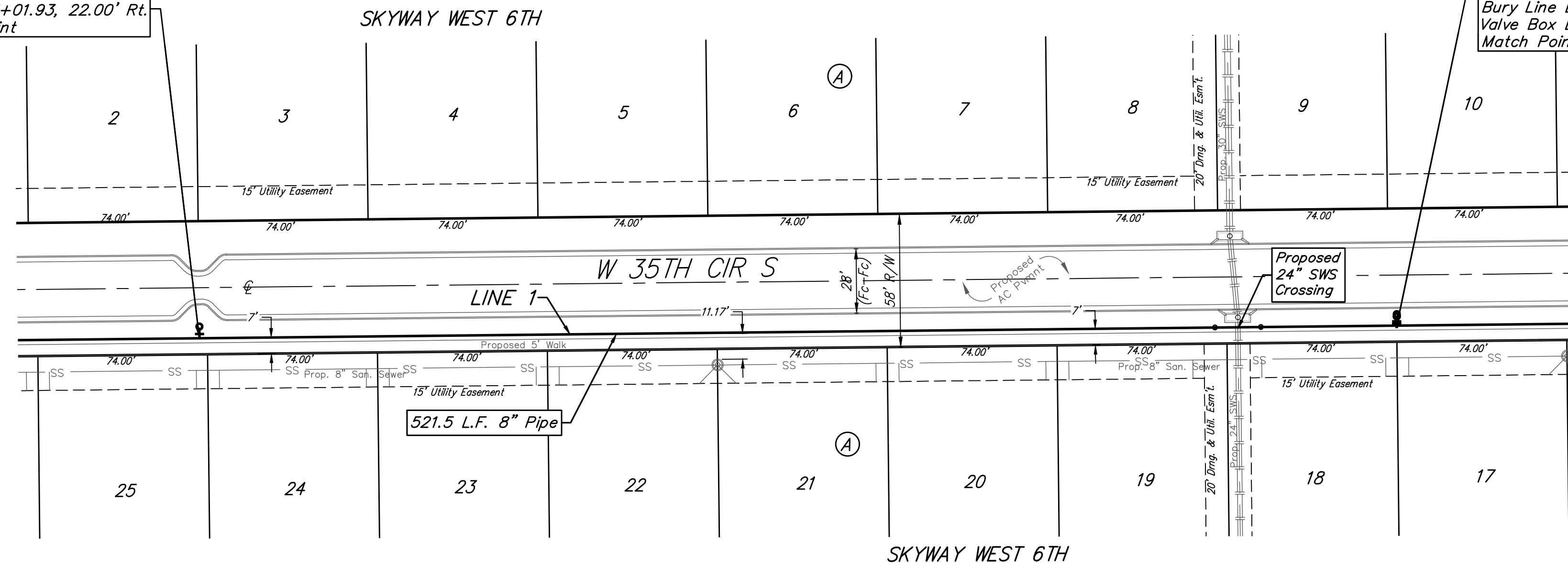
BENCHMARK #1:
CROSS CUT IN SQUARE CUT, TOP OF CURB AT WEST END OF CURB RETURN, NORTHWEST CORNER OF SHEFFORD AND W 35TH ST S, 14.5' SOUTH & 5.0' WEST OF THE SOUTHEAST CORNER OF LOT 1, BLOCK D, HARVEST RIDGE ADDITION. ELEV. = 1336.39 (NAVD88)

BENCHMARK #2:
CROSS CUT IN SQUARE CUT ON TOP FRONT CENTER OF CATCH BASIN, WEST SIDE OF HOLLYWOOD, 4.6' NORTH & 12.8' EAST OF SOUTHEAST CORNER OF LOT 2, BLOCK C, HARVEST RIDGE ADDITION. ELEVATION = 1335.39 (NAVD88)

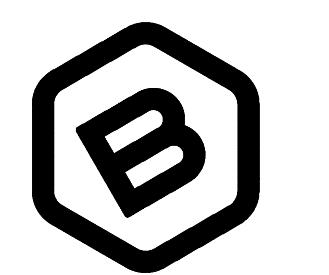
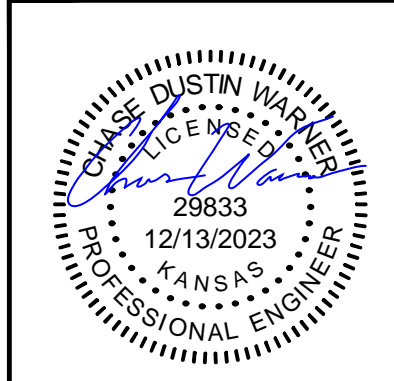
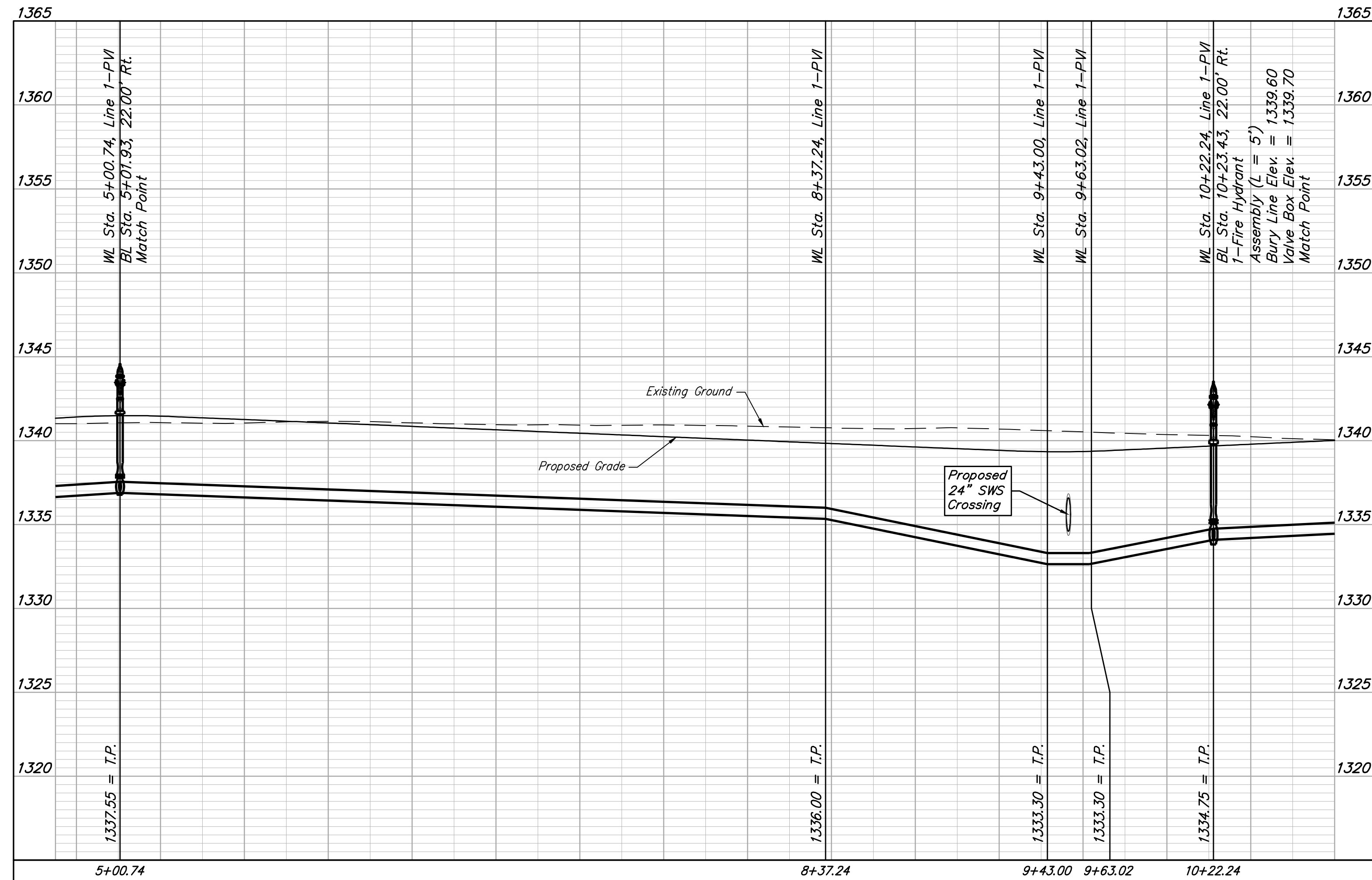
Baseline
Baseline = ϕ W 35TH CIR S

WL Sta. 5+00.74, Line 1
BL Sta. 5+01.93, 22.00' Rt.
Match Point

WL Sta. 10+22.24, Line 1
BL Sta. 10+23.43, 22.00' Rt.
1-Fire Hydrant
Assembly (L = 5')
Bury Line Elev. = 1339.60
Valve Box Elev. = 1339.70
Match Point



2-foot minimum vertical separation between water service lines and all sanitary sewer lines shall be maintained at crossings. 10-foot horizontal separation between water service lines and all sanitary sewer lines and manholes shall be maintained. Distances are to be measured from edge-to-edge, at the closest point.



BAUGHMAN COMPANY
315 Ellis St.
Wichita, KS 67211
316-262-7271
BaughmanCo.com

SKYWAY WEST
6TH ADDITION

LINE 1

WATER DISTRIBUTION
SYSTEM

PROJECT NUMBER:

DESIGN: CDW DRAWN: CDW

DATE: December 13, 2023

SHEET OF
05 14

REVISION: Updated Water Separation Dimensions
Date: 12/13/2023
By: CDW

File: E:\Projects\Skyway West 6th_22-05-P786\Engineering\Phase 1\WTR\WTR.dwg