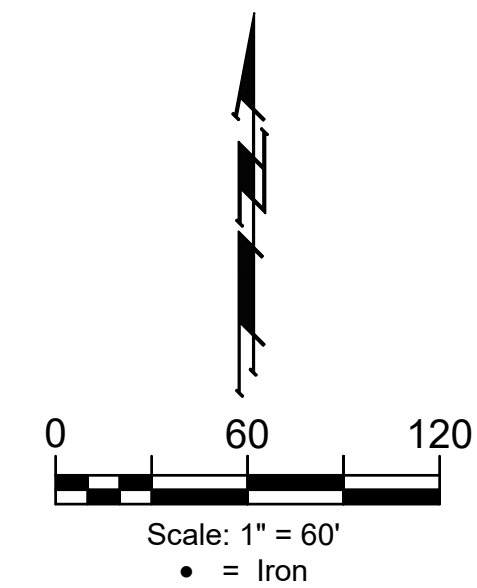
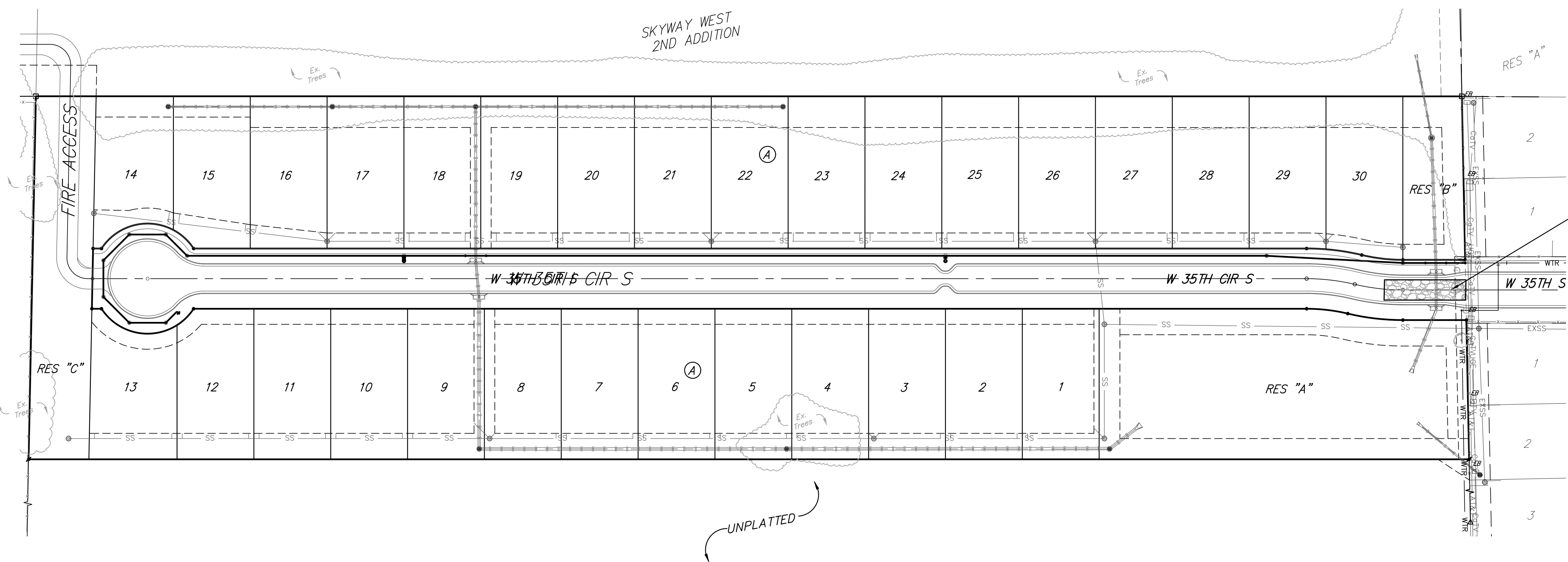


BENCHMARK #1:  
CROSS CUT IN SQUARE CUT, TOP OF CURB AT WEST END OF CURB RETURN, NORTHWEST CORNER OF SHEFFORD AND W 35TH ST S, 14.5' SOUTH & 5.0' WEST OF THE SOUTHEAST CORNER OF LOT 1, BLOCK D, HARVEST RIDGE ADDITION. ELEV. = 1336.39 (NAVD88)

BENCHMARK #2:  
CROSS CUT IN SQUARE CUT ON TOP FRONT CENTER OF CATCH BASIN, WEST SIDE OF HOLLYWOOD, 4.6' NORTH & 12.8' EAST OF SOUTHEAST CORNER OF LOT 2, BLOCK C, HARVEST RIDGE ADDITION. ELEVATION = 1335.39 (NAVD88)



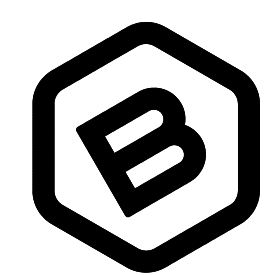
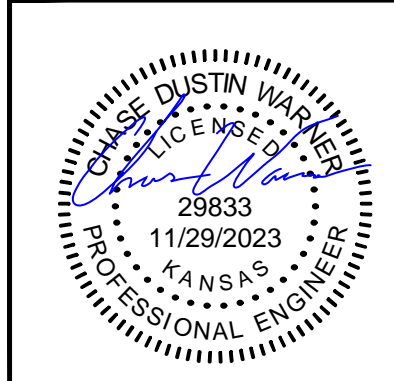
Existing Ground - - - - -1364 - - - - -



Maintain 50'x12' Gravel Construction Entrance.

HARVEST RIDGE ADDITION

UNPLATTED



**BAUGHMAN COMPANY**

315 Ellis St.  
Wichita, KS 67211  
316-262-7271  
BaughmanCo.com

SKYWAY WEST  
6TH ADDITION

**EROSION CONTROL**

Water Distribution System

PROJECT NUMBER:  
448-2023-007274

DESIGN: CDW DRAWN: CDW

DATE: July 28, 2023

SHEET **07** OF **14**

- CONSTRUCTION ENTRANCE

EROSION CONTROL MEASURE	INSTALL	MAINTAIN
CONSTRUCTION ENTRANCE (EA)	0	1

Contractor shall make sure all erosion control is in place before project is accepted. This plan represents the minimum standard. Any additional erosion control measures shall be installed by the Contractor as needed.

File: E:\Projects\Skyway West 6th\_22-05-P786\Engineering\Phase 1\WTR\WTR.dwg