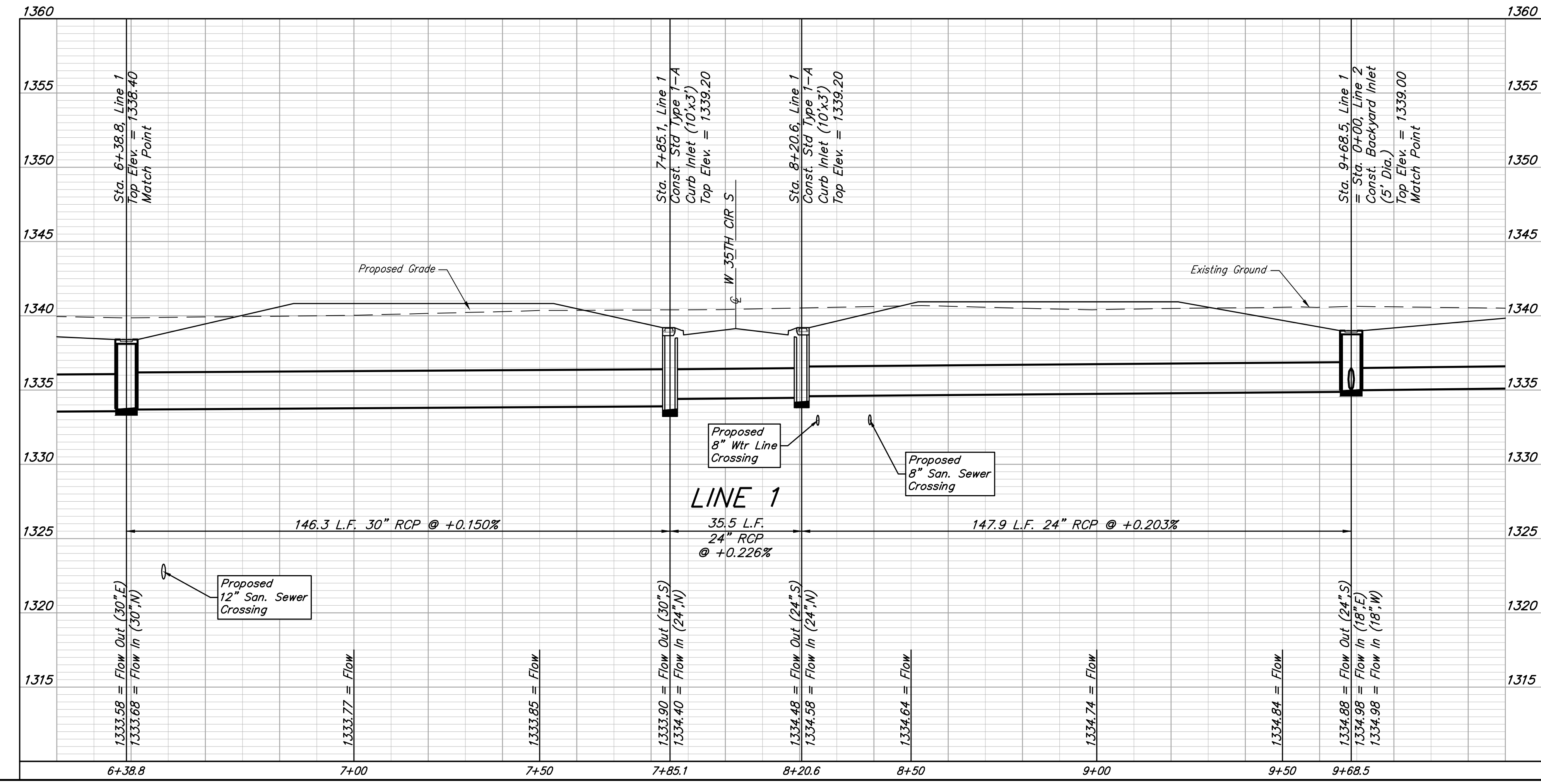
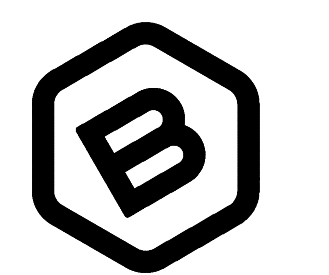
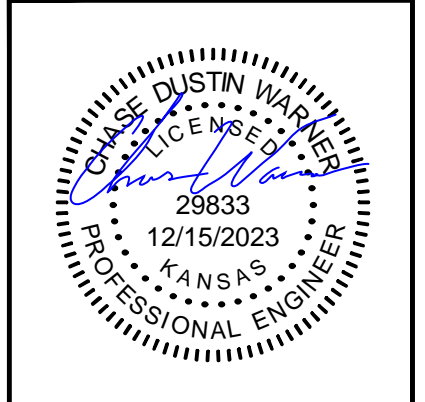


CATHOLIC DIOCESE
OF WICHITA
2351 N MARKET ST
WICHITA, KS 67214-4422

DUGAN JOHN E FAMILY
PARTNERSHIP LP ETAL
15810 W 47TH ST S
CLEARWATER, KS
67026-9046



Existing trees which are in direct conflict with proposed new construction shall be removed by the Contractor ONLY with approval of the Developer or Engineer. Trees not in direct conflict with proposed new construction shall remain and be protected from damage. Cost shall be included in bid item "Site Clearing"



BAUGHMAN COMPANY
315 Ellis St.
Wichita, KS 67211
316-262-7271
BaughmanCo.com

SKYWAY WEST
6TH ADDITION
LINE 1

STORMWATER DRAIN
IMPROVEMENTS
PROJECT NUMBER:
458-2023-085537
DESIGN: CDW DRAWN: CDW
DATE: December 13, 2023
SHEET 04 OF 27

REVISION: Sand Backfill Note Removed
Date: 12/13/2023
By: CDW

File: E:\Projects\Skyway West 6th_22-05-P786\Engineering\Phase 1\SWD-SWS\SWD-SWS.dwg