



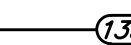

BENCHMARKS:

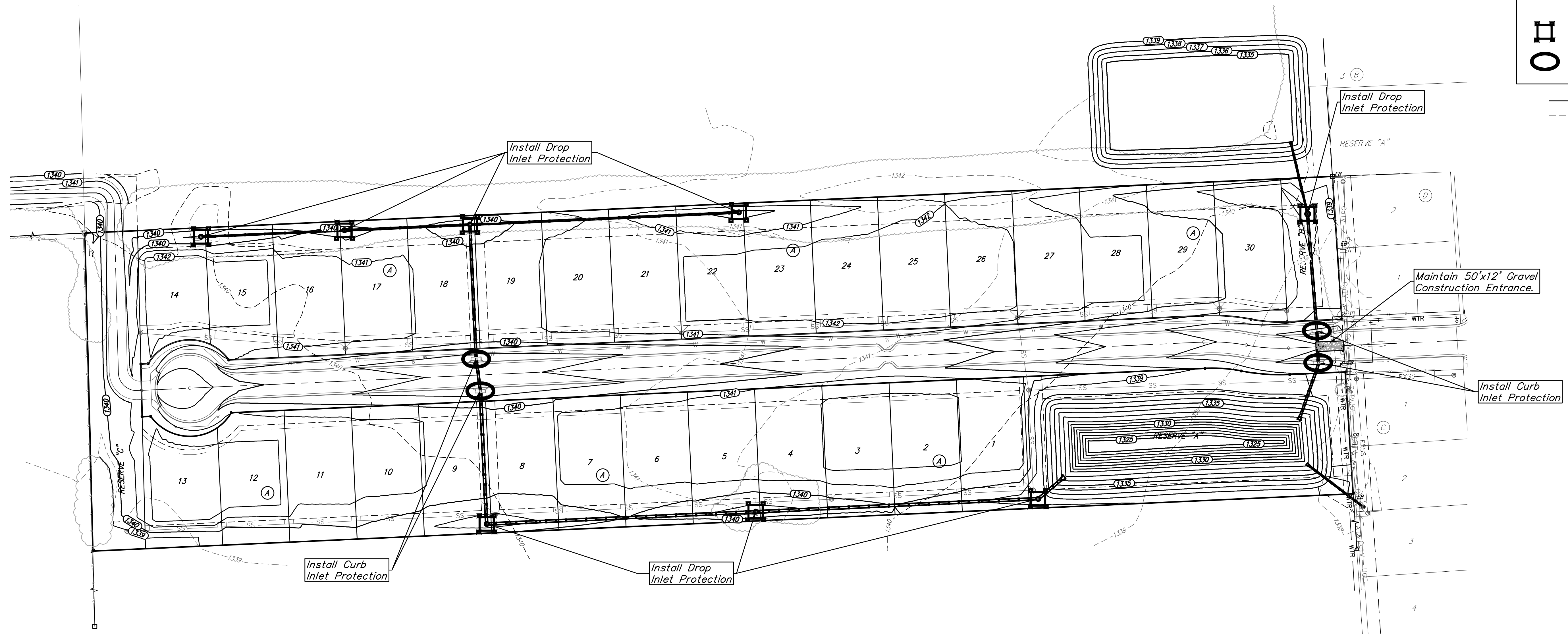
BENCHMARK #1:
CROSS CUT IN SQUARE CUT, TOP OF CURB
AT WEST END OF CURB RETURN,
NORTHWEST CORNER OF SHEFFORD AND W
35TH ST S, 14.5' SOUTH & 5.0' WEST OF
THE SOUTHEAST CORNER OF LOT 1,
BLOCK D, HARVEST RIDGE ADDITION.
ELEV. = 1336.39 (NAVD88)

BENCHMARK #2:
CROSS CUT IN SQUARE CUT ON TOP
FRONT CENTER OF CATCH BASIN, WEST
SIDE OF HOLLYWOOD, 4.6' NORTH & 12.8'
EAST OF SOUTHEAST CORNER OF LOT 2,
BLOCK C, HARVEST RIDGE ADDITION.
ELEVATION = 1335.39 (NAVD88)

**EROSION CONTROL PLAN
LEGEND**

-  - DROP INLET PROTECTION
-  - CURB INLET PROTECTION

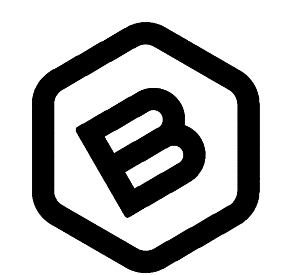
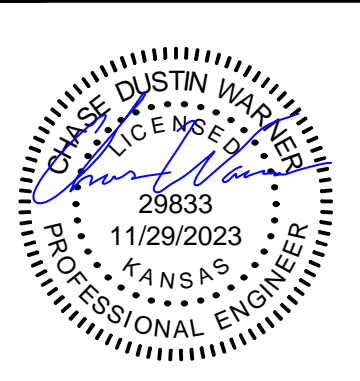
 Proposed Grade
 Existing Grade



EROSION CONTROL MEASURE	INSTALL	MAINTAIN	REMOVE
CONSTRUCTION ENTRANCE (EA)	0	1	0
CURB INLET BARRIER (EA)	4	0	0
DROP INLET PROTECTION (EA)	8	0	0
EROSION CONTROL MAT (SY)	4,407	0	0

* ALL EXISTING BMPs INCLUDING CONSTRUCTION ENTRANCE, SEDIMENT BARRIERS, SILT FENCE, CUT-OFF TRENCH, AND EROSION CONTROL MAT SHALL BE MAINTAINED AND REPAIRED IF NECESSARY.

Contractor shall make sure all erosion control is in place before project is accepted. This plan represents the minimum standard. Any additional erosion control measures shall be installed by the Contractor as needed.



**BAUGHMAN
COMPANY**
315 Ellis St.
Wichita, KS 67211
316-262-7271
BaughmanCo.com

SKYWAY WEST
6TH ADDITION

**EROSION
CONTROL**

STORMWATER DRAIN
IMPROVEMENTS

PROJECT NUMBER:
458-2023-085537

DESIGN: CDW DRAWN: CDW
DATE: August 14, 2023

SHEET OF
09 27

File: E:\Projects\Skyway West 6th_22-05-P786\Engineering\Phase 1\SWD-SWS\SWD-SWS.dwg