

**GENERAL NOTES:**

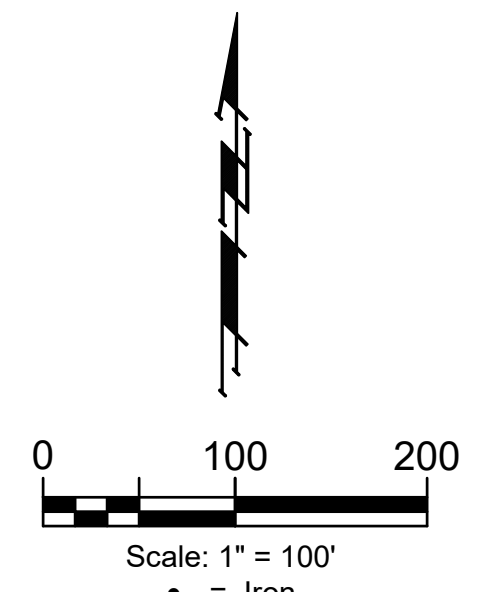
- Contractor will be required to provide notice to utility companies a minimum of seventy-two (72) hours prior to any excavation, as follows:  
 Kansas One-Call 687-2470  
 The Contractor must notify the following in case of an emergency:  
 Cox Communications 262-4270  
 Kansas Gas Service 1-888-482-4950  
 Evergy 383-8650  
 Black Hills 1-800-303-0357  
 AT&T 268-2245  
 City of Wichita Water Dept. 268-4563  
 City of Wichita Sewer Maint. 268-4024  
 City of Wichita Storm Sewer Maint. 268-4034  
 City of Wichita Traffic Maint. 268-4034  
 Conoco Phillips Pipeline Co. 1-877-267-2290  
 Southern Star Pipeline Co. 529-6600  
 Kinder-Morgan Pipeline Co. 1-888-844-5658
- Utility service lines, poles, valve boxes, meters, and etcetera are to be adjusted as necessary by others prior to construction unless the plans specifically call for their adjustment by the Contractor or unless the plans specifically identify a utility to be adjusted by its owner during construction. Existing utilities and their location, as shown on the plans, represent the best information obtainable for design. The Contractor will be required to work around existing utilities within the right-of-way which do not conflict with proposed construction.
- Rubble from the removal of miscellaneous structures and excess excavation which is to be wasted shall be disposed of on sites to be provided by the Contractor. These sites shall be approved by the Engineer as to suitability, appearance and site location. Locations, in the opinion of the Engineer, that will leave an unsightly appearance will not be approved. All disposal sites must be approved by the Kansas Department of Health and Environment. Material either stockpiled or disposed of in a flood plain would require a Kansas State Board of Agriculture permit. Any material dumped in waters of the United States or wetlands is subject to U.S. Corps. of Engineers permitting regulations. Any material buried or stockpiled beyond approved construction limits would require additional archaeological investigations unless buried in a previously approved borrow location.
- Trees and shrubs in public right-of-way which are in direct conflict with proposed new construction shall be removed by the Contractor ONLY with the Developer or Baughman Company approval. Trees and shrubs which are not in direct conflict with proposed new construction shall be saved and protected from damage.  
 Seed -- Kansas Premium Fescue Blend; 8 lbs. PLS/1000 Sq. Ft.  
 Annual Rye grass; 3 lbs./1000 Sq. Ft.  
 Fertilizer -- 12-24-12 Ratio; 45 Lbs./Ac.  
 Mulch -- 2 Tons Prairie Hay/Ac.  
 All others areas disturbed during construction shall be seeded as follows:  
 Seed -- Rye grass (PLS) -- 5 Lbs/1,000 Sq Ft.
- The Contractor shall give all property owners and/or tenants of developed property abutting the construction of this project a minimum of ten (10) days notice prior to start of construction.
- The Contractor shall be responsible for preserving property irons. The Contractor will be required to re-establish any property irons which are damaged or destroyed by his construction operations. Such irons shall be re-established by a licensed Land Surveyor in accordance with state laws.
- All existing and proposed erosion control measures including silt fencing, erosion control mat, straw bales, inlet barriers, and const. entrance shall be maintained throughout construction by the Contractor and until project is accepted by the City of Wichita. The on-site Engineer shall complete weekly reports on the status of erosion control measures. The Contractor shall be required to comply with maintenance and/or replacement of erosion control measures as determined by the on-site Engineer until project is accepted by City of Wichita. Maintenance and/or replacement of erosion control measures to be paid by L.S. bid item "Maintain Existing BMP's."
- A saw cut of at least one-half the depth of existing surface courses or one-fourth the depth of the existing total pavement thickness shall be provided at locations where proposed construction abuts the existing surface course or pavement for which partial removal of that surface or pavement is required. Sawed joint to facilitate removal within three (3) feet of existing joints will not be permitted and for such instances the limits of removal shall extend to the existing joint. Such saw cuts will not be paid for directly and this cost shall be considered as subsidiary to the removal of the surface or pavement.
- Excess excavation shall be stockpiled or spread on-site at a location determined by the Developer or Design Engineer.
- Contractor shall contact Developer and coordinate seeding schedule to avoid conflict with Evergy staking and trenching.
- The Developer for this project is John Dugan. Address: 10180 SW Blvd. Wichita, KS 67215 PH# (316) 634-2600

# Street Paving W 35th Cir S Street to serve **SKYWAY WEST 6TH ADDITION**

**STREET:** From the east line of the plat, west, to the east line of Reserve C

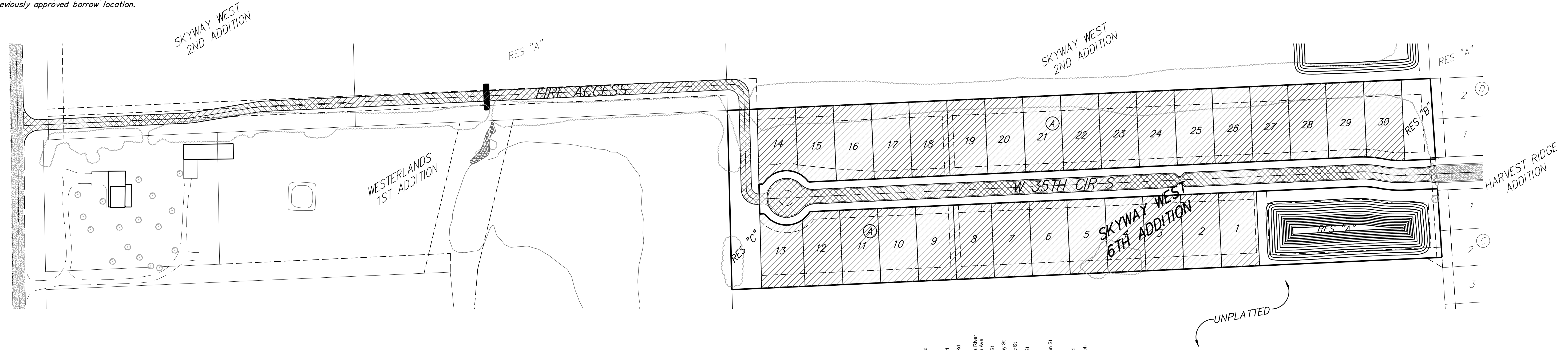
## CITY OF WICHITA, KANSAS

Paul Gunzelman, P.E. City Engineer  
 Project Number: 472-2023-085900  
 Org Code Number: 47473523  
 Munis Number: E3098



**SHEET INDEX**

Title Sheet	1
Asphalt Paving Detail	2
Curb & Gutter Detail	3
Sign Details	4
Drive Entrance Detail	5
Inlet Underdrain Detail	6
W 35th Cir S	7-10
Fire Access Road	11-13
Erosion Control Plan	14
Erosion Control BMP Details	15-19
Cross Sections	20-24
Coordinate Sheet	25
Copy of Plat	26



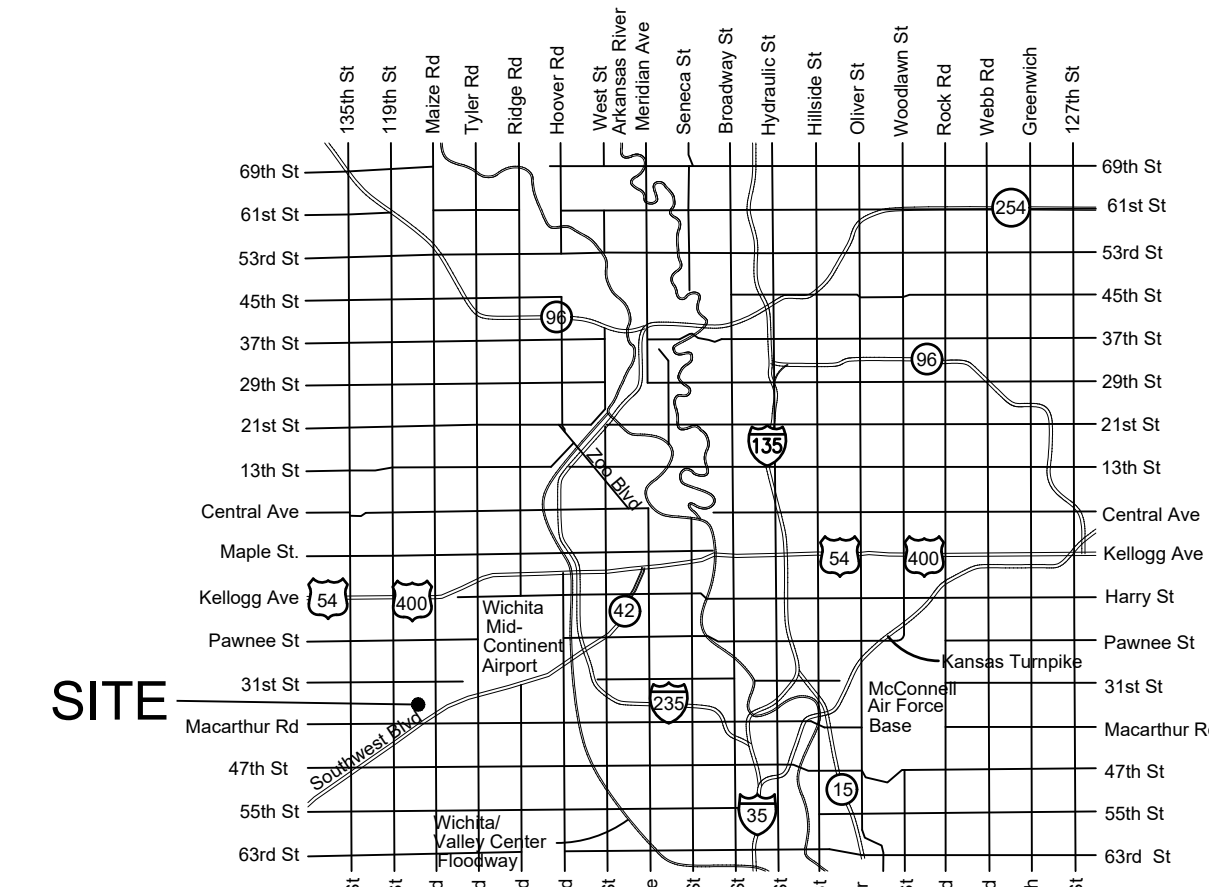
**BENCHMARKS**

**BENCHMARK #1:**  
 CROSS CUT IN SQUARE CUT, TOP OF CURB AT WEST END OF CURB RETURN, NORTHWEST CORNER OF SHEFFORD AND W 35TH ST S, 14.5' SOUTH & 3.0' WEST OF THE SOUTHWEST CORNER OF LOT 1, BLOCK D, HARVEST RIDGE ADDITION. ELEV. = 1336.39 (NAVD88)

**BENCHMARK #2:**  
 CROSS CUT IN SQUARE CUT ON TOP FRONT CENTER OF CATCH BASIN, WEST SIDE OF HOLLYWOOD, 4.0' NORTH & 12.8' EAST OF SOUTHWEST CORNER OF LOT 2, BLOCK C, HARVEST RIDGE ADDITION. ELEVATION = 1335.39 (NAVD88)



Project Earthwork Totals (CY unadjusted)			
Street R/W	Excavation	Compacted Fill	Loose Fill
800	-	504	
<b>Total Project Length</b>			
1,323 L.F. = .25 Miles			



**VICINITY MAP**



August 15, 2023

**BAUGHMAN COMPANY**  
 315 Ellis St. Wichita, KS 67211 316-262-7271  
 BaughmanCo.com

E:\Projects\Skyway West 6th\_22-05-17-2023\Engineering\Phase 1\STR\STR.dwg