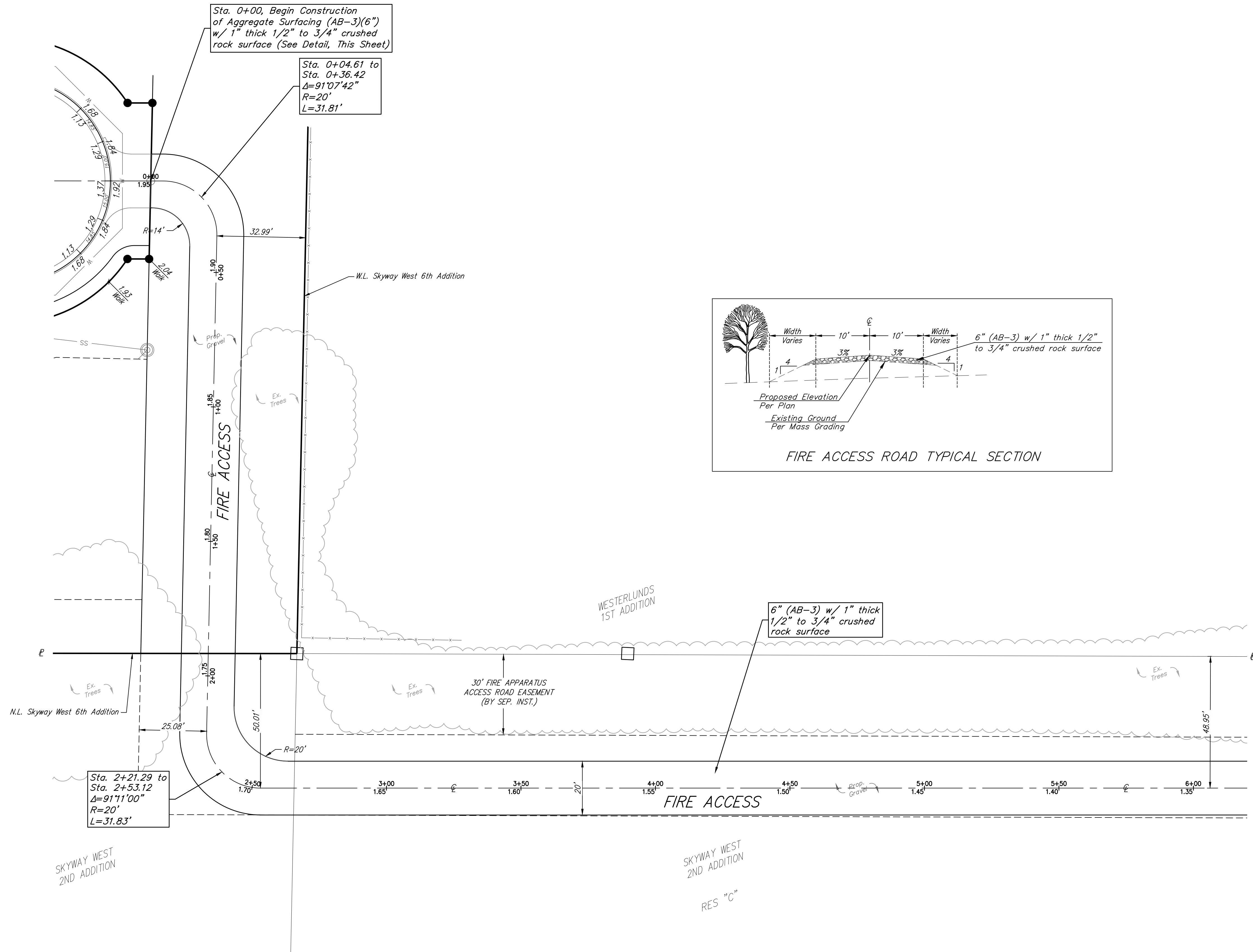


BENCHMARK #1:
 CROSS CUT IN SQUARE CUT, TOP OF CURB AT WEST END OF CURB RETURN, NORTHWEST CORNER OF SHEFFORD AND W 35TH ST S, 14.5' SOUTH & 5.0' WEST OF THE SOUTHEAST CORNER OF LOT 1, BLOCK D, HARVEST RIDGE ADDITION. ELEV. = 1336.39 (NAVD88)

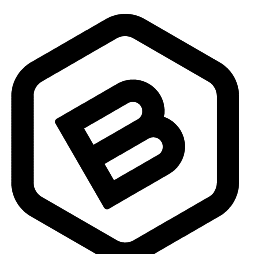
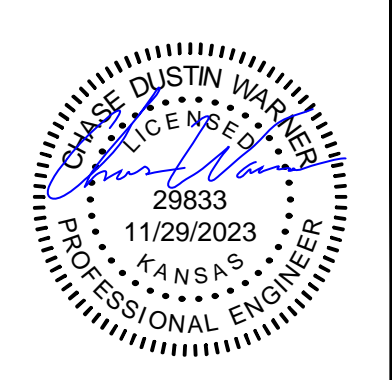
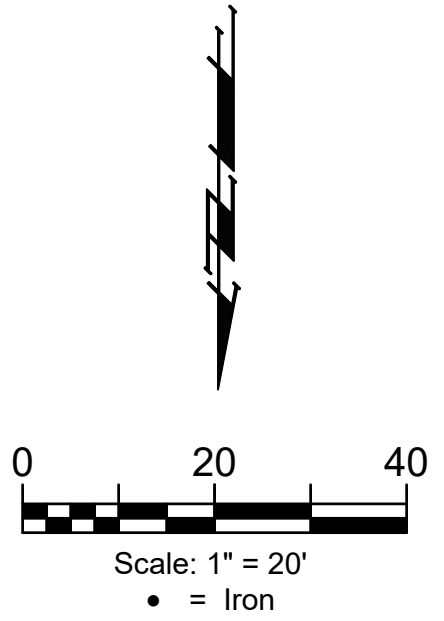
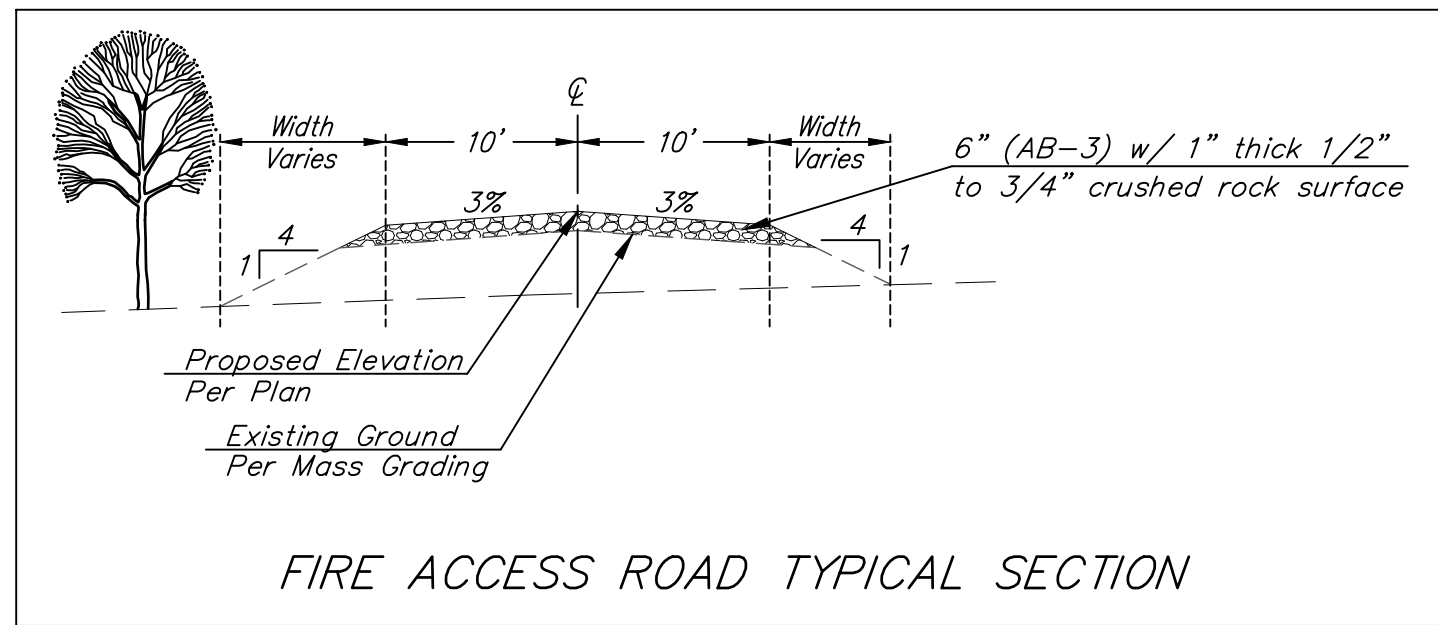
BENCHMARK #2:
 CROSS CUT IN SQUARE CUT ON TOP FRONT CENTER OF CATCH BASIN, WEST SIDE OF HOLLYWOOD, 4.6' NORTH & 12.8' EAST OF SOUTHEAST CORNER OF LOT 2, BLOCK C, HARVEST RIDGE ADDITION. ELEVATION = 1335.39 (NAVD88)



Sta. 0+00, Begin Construction of Aggregate Surfacing (AB-3)(6") w/ 1" thick 1/2" to 3/4" crushed rock surface (See Detail, This Sheet)

Sta. 0+04.61 to Sta. 0+36.42
 $\Delta=91^{\circ}07'42''$
 $R=20'$
 $L=31.81'$

Sta. 2+21.29 to Sta. 2+53.12
 $\Delta=91^{\circ}11'00''$
 $R=20'$
 $L=31.83'$



BAUGHMAN COMPANY

315 Ellis St.
 Wichita, KS 67211
 316-262-7271
 BaughmanCo.com

SKYWAY WEST 6TH ADDITION

FIRE ACCESS

Street Paving Improvements

PROJECT NUMBER:
 472-2023-085900

DESIGN: CDW DRAWN: CDW
 DATE: August 15, 2023

SHEET OF
11 26

Roll type curb & gutter to be constructed on the pavement on this sheet.
 Top of curb elevation are given for full height curb.

File: E:\Projects\Skyway West 6th_22-05-P786\Engineering\Phase 1\STR\STR.dwg