

WATER DISTRIBUTION SYSTEM

to serve

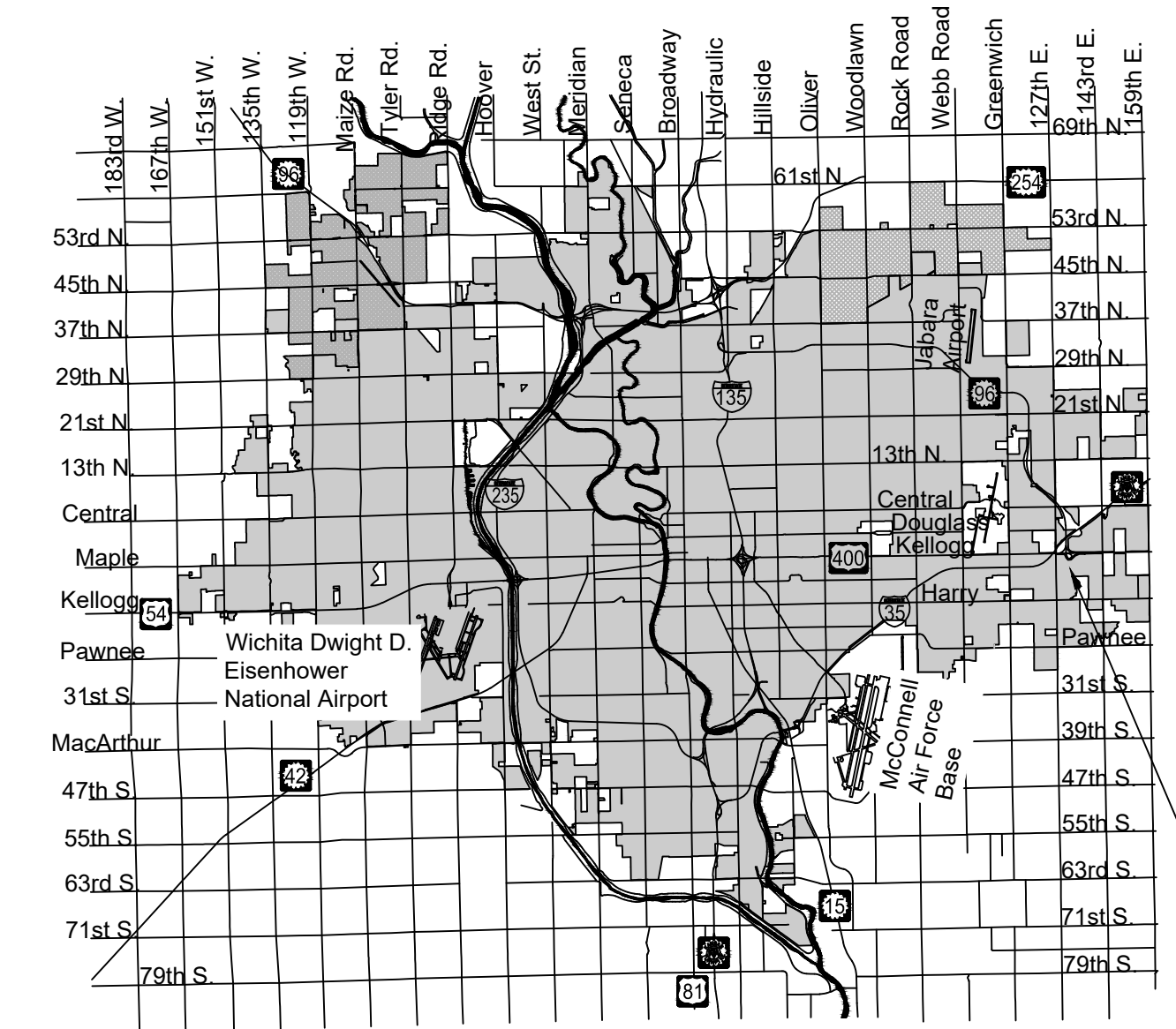
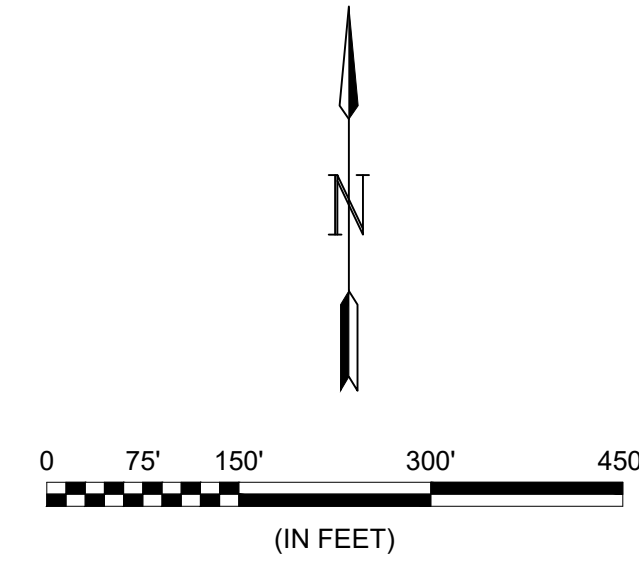
BELLECHASE 3RD ADDITION PHASE 5

CITY OF WICHITA, KANSAS

Paul Gunzelma, P.E. - City Engineer
 Project Number: 448-2023-029750
 Org Code Number: 47122223
 Munis Number: E3147

DEVELOPER'S CONTACT INFORMATION

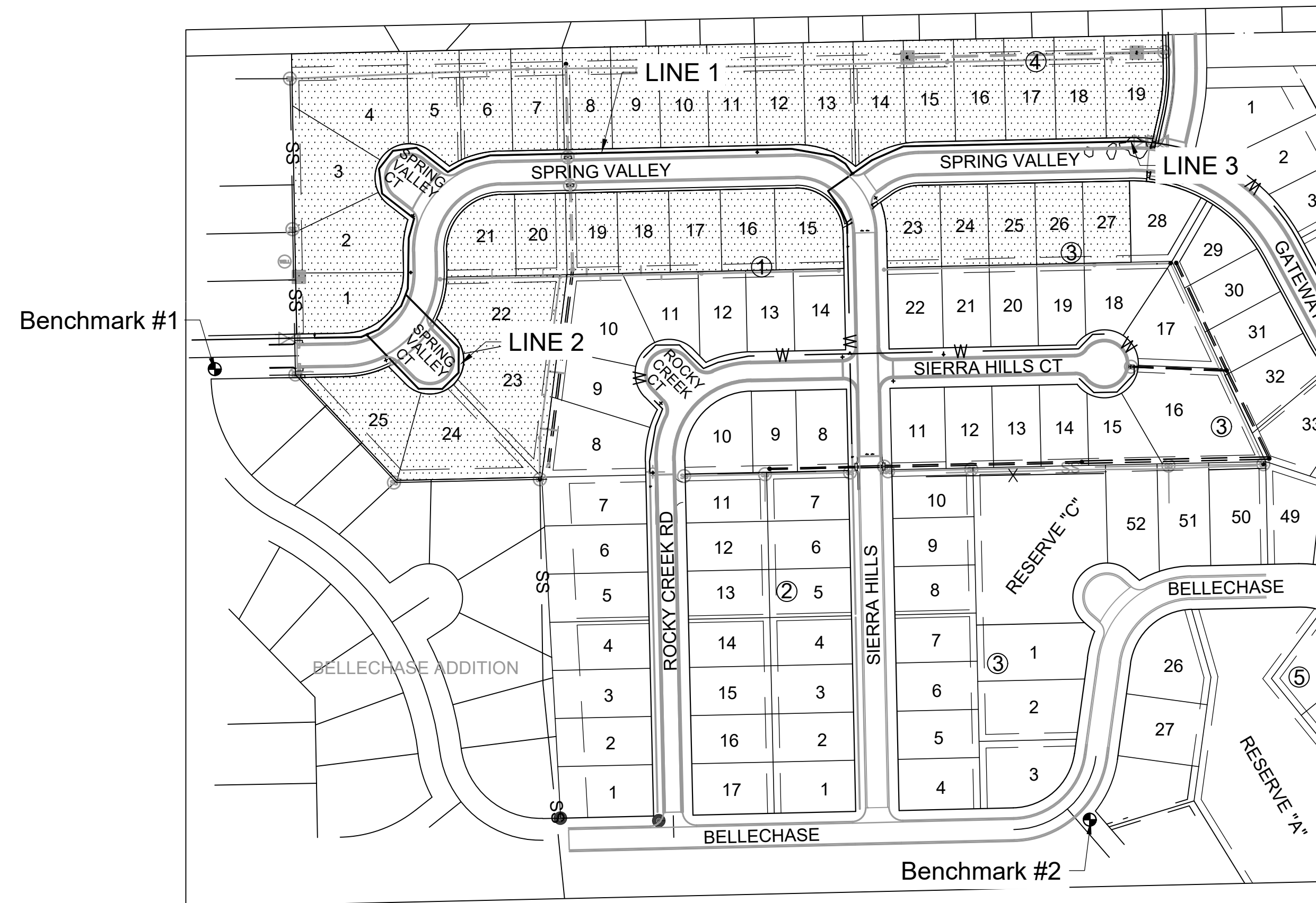
Eric Gilbert
 Artistic Builders
 abkansas.com
 316-650-7536



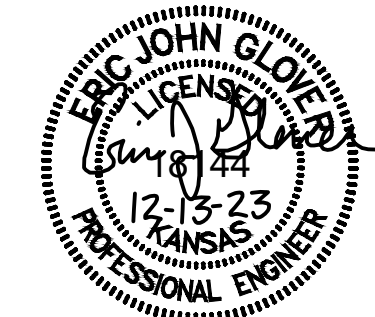
PROJECT LOCATION

Vicinity Map

Sheet List Table	
Sheet Number	Sheet Title
1	TITLESHEET
2	GENERAL NOTES
3	WATER ASSEMBLY DETAILS
4	MISCELLANEOUS WATER DETAILS
5	WATERLINE 1 (1 OF 3)
6	WATERLINE 1 (2 OF 3)
7	WATERLINE 1 (3 OF 3)
8	WATERLINE 2
9	WATERLINE 3 (1 OF 2)
10	WATERLINE 3 (2 OF 2)
11	COORDINATE MAP (1 OF 2)
12	COORDINATE MAP (2 OF 2)
13	EROSION CONTROL PLAN
14	SEEDING NOTES
15	BACK OF CURB DETAILS
16	SUBDIVISION DEVELOPMENT PROCESS
17	STREET IMPROVEMENT PROJECTS
18	STRAW BALE DETAILS
19	SILT FENCE DETAILS
20	FINAL PLAT



IMPROVEMENT DISTRICT



Benchmarks

BENCHMARK #1: CHISELED SQUARE ON THE TOP OF CURB AT THE SOUTHEAST CORNER OF SPRING VALLEY AND HORSEBACK
 ELEVATION = 1331.27 (NAVD88)

BENCHMARK #2: CHISELED SQUARE ON THE TOP OF CURB AT THE SOUTHEAST CORNER OF ALDEN AND BELLECHASE
 ELEVATION = 1323.30 (NAVD88)

NOTE: All coordinates listed are modified NAD83 Kansas State Plane Zone South unless otherwise noted. To convert listed coordinates to NAD83 Kansas State Plane Zone South coordinates multiply the northing and easting by the project scale factor of 0.99988639. Elevation datum is NAVD88 Geoid 12B unless otherwise noted.

DEC 2023

PLANS PREPARED BY

