

BENCHMARKS:
 BM #1 - "+" on north side of manhole rim ~42' east and 28' south of the intersection of MacArthur & Bluelake St. Elev. = 99.97 City Datum

BM #2 - "□" with + cut on northwest face of drop inlet on north side of MacArthur Road, 79.4' North of centerline of MacArthur Road and 152.3' E/SE of southwest corner of Reserve "C", Blue Lake 3rd Addition. Elev. = 95.55 City Datum

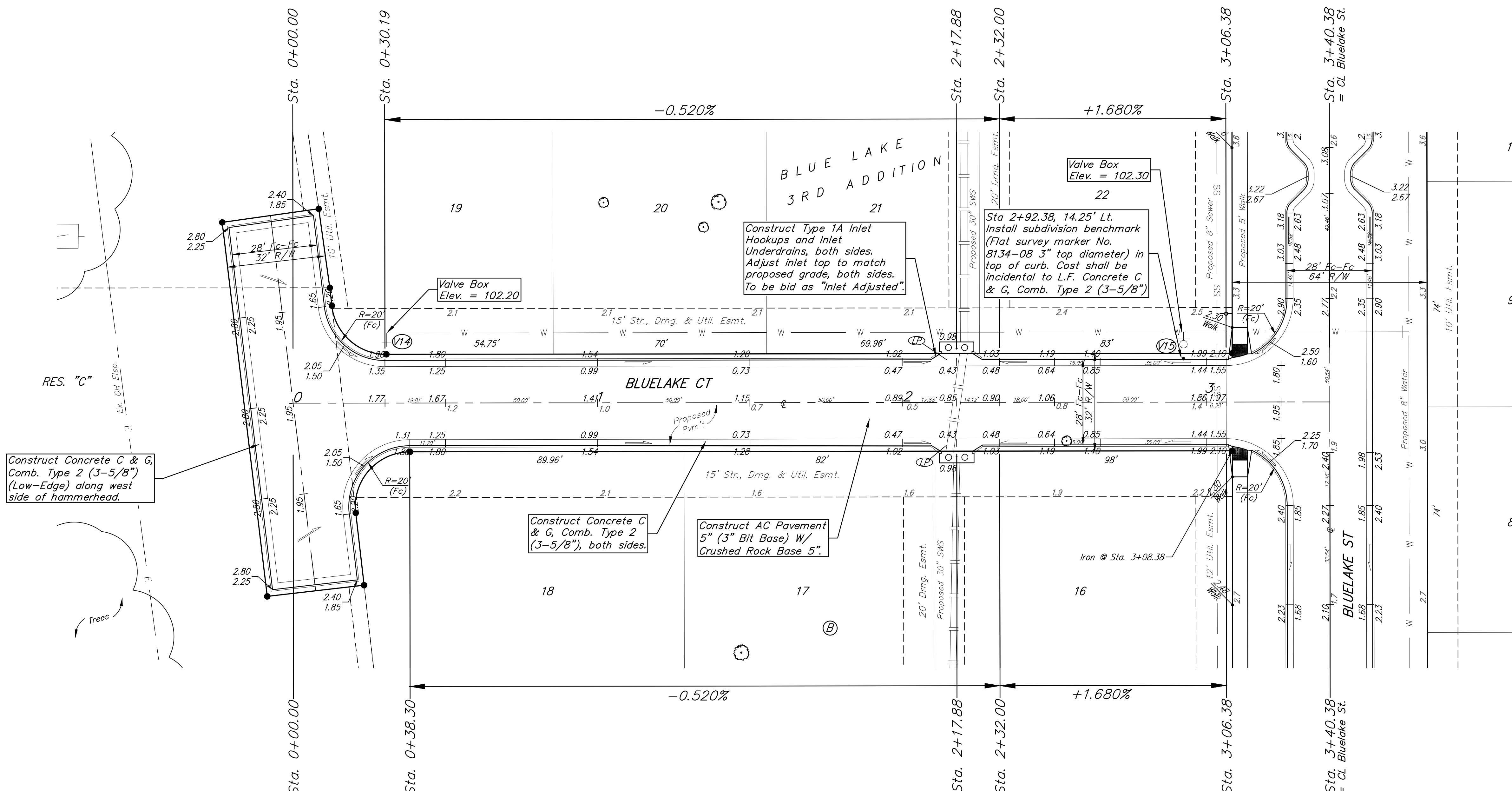
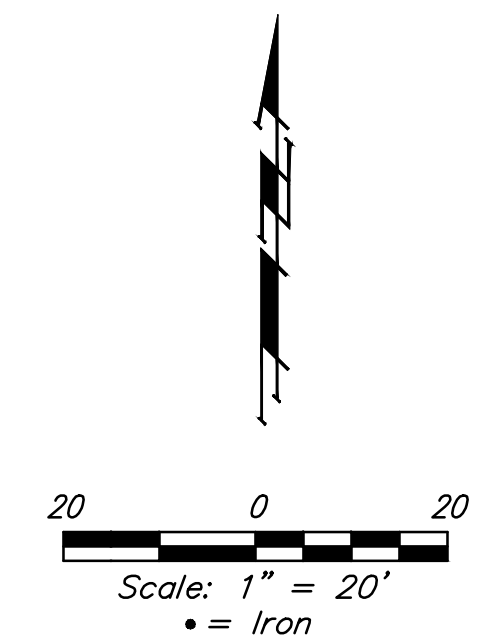
WATER VALVE LOCATION TABLE

VALVE NUMBER	STREET	BASILINE STATION	OFFSET DISTANCE	OFFSET DIRECTION
V14	Bluelake Ct.	0+30.19	23.00'	Lt.
V15	Bluelake Ct.	2+92.38	23.00'	Lt.

Baseline = CL Bluelake Ct.

Paving contractor will be responsible to operate all water valves on the project, in the presence of the inspector, to ensure accessibility to the valves, and that all valves (except blowoffs) are left in the "ON" position when the project is completed.

Subdivision Bench Marks		
Street & Station	Location Description	Elevation
Bluelake Ct. 2+92.38, 14.25' Lt.	Adjacent to Fire Hydrant 14' west of west end of NW curb return of Bluelake & Bluelake Ct. (Lots 16-22 Block B).	



P.V.I.
Elev. = 100.85
66' V.C.

P.V.I.
Elev. = 100.85
66' V.C.

Construct Concrete C & G, Comb. Type 2 (3-5/8") (Low-Edge) along west side of hammerhead.

Construct Concrete C & G, Comb. Type 2 (3-5/8"), both sides.

Construct AC Pavement 5" (3" Bit Base) W/ Crushed Rock Base 5".

Construct Type 1A Inlet Hookups and Inlet Underdrains, both sides. Adjust inlet top to match proposed grade, both sides. To be bid as "Inlet Adjusted".

Sta 2+92.38, 14.25' Lt. Install subdivision benchmark (Flat survey marker No. 8134-08 3" top diameter) in top of curb. Cost shall be incidental to L.F. Concrete C & G, Comb. Type 2 (3-5/8")

NOTE: ROLL TYPE CURB & GUTTER (TYPE 2) TO BE CONSTRUCTED ON THE PAVEMENT SHOWN ON THIS SHEET. TOP OF CURB ELEVATIONS ARE GIVEN FOR FULL HEIGHT CURB (TYPE 4).

BAUGHMAN COMPANY
 315 Ellis St.
 Wichita, KS 67211
 316-262-7271
 BaughmanCo.com

BLUE LAKE 3RD ADD.
 Phase 1
**BLUELAKE CT.
 (LOTS 16-22)**
 STREET IMPROVEMENTS
 PROJECT NUMBER:
 23-01-E416
 DESIGN: AEG DRAWN: TMS
 DATE: October 9, 2023
 SHEET **10** OF **39**

File: E:\Projects\Blue Lake 3rd Addition_22-02-P755\Engineering\Phase 1\STR 23-01-E416\Street.dwg