

BENCHMARKS:
 BM #1 - "+" on north side of manhole rim ~42' east and 28' south of the intersection of MacArthur & Bluelake St. Elev. = 99.97 City Datum

BM #2 - "□" with + cut on northwest face of drop inlet on north side of MacArthur Road, 79.4' North of centerline of MacArthur Road and 152.3' E/SE of southwest corner of Reserve "C", Blue Lake 3rd Addition. Elev. = 95.55 City Datum

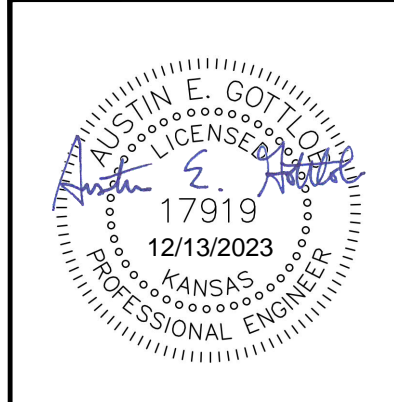
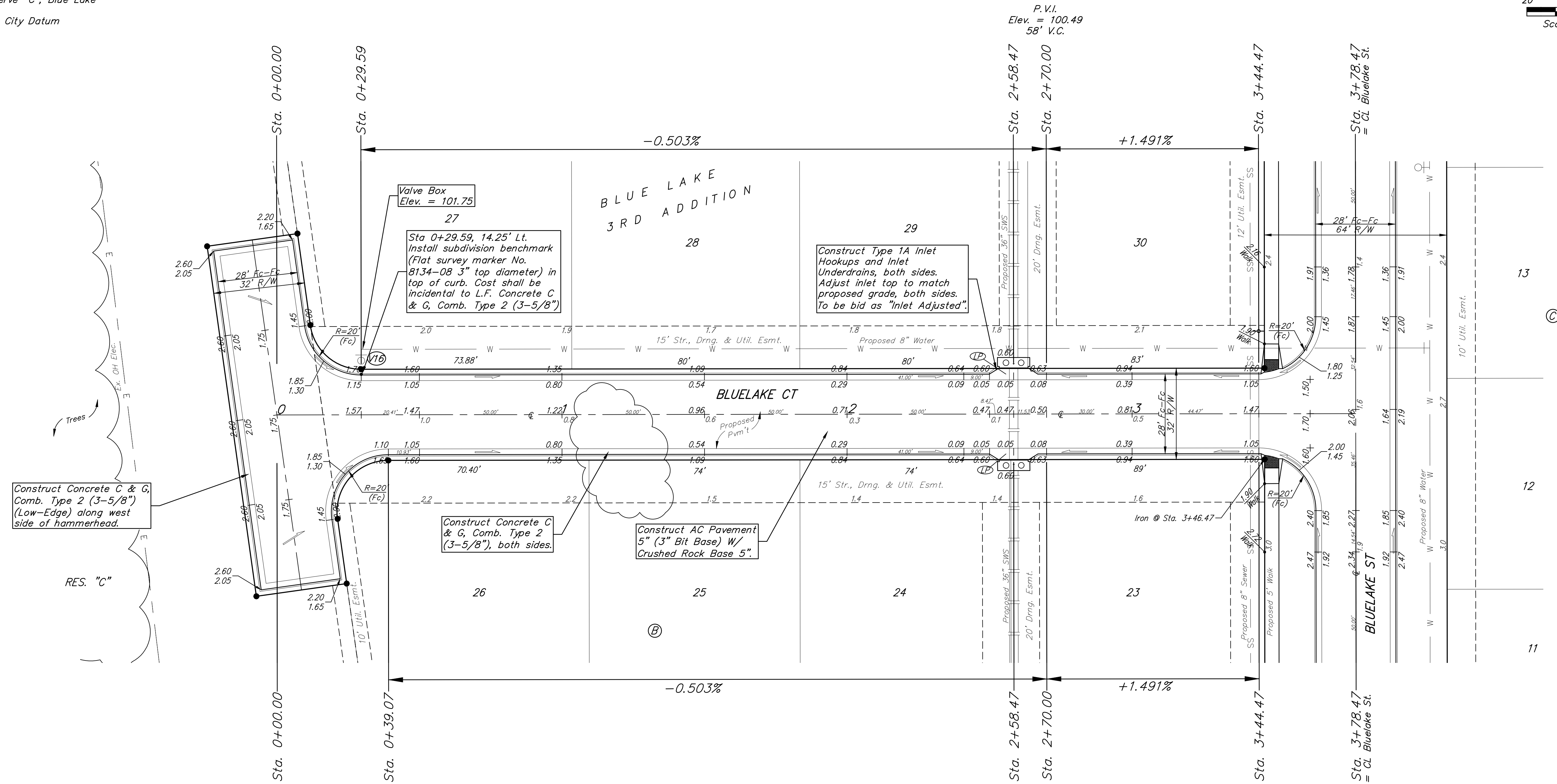
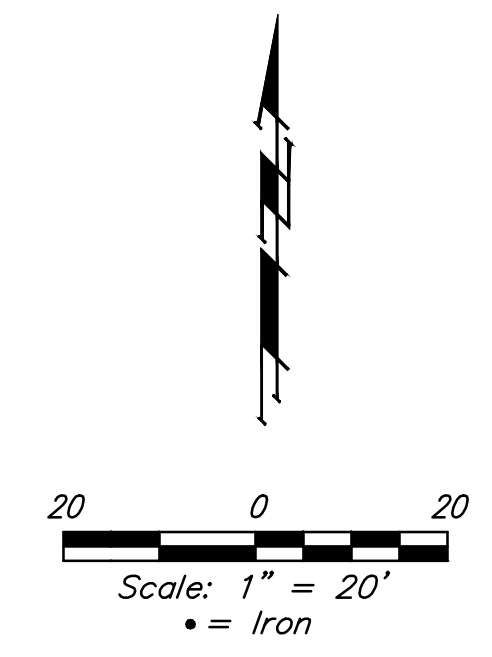
WATER VALVE LOCATION TABLE

VALVE NUMBER	STREET	BASELINE STATION	OFFSET DISTANCE	OFFSET DIRECTION
V16	Bluelake Ct.	0+29.59	23.00'	Lt.

Baseline = CL Bluelake Ct.

Paving contractor will be responsible to operate all water valves on the project, in the presence of the inspector, to ensure accessibility to the valves, and that all valves (except blowoffs) are left in the "ON" position when the project is completed.

Subdivision Bench Marks		
Street & Station	Location Description	Elevation
Bluelake Ct. 0+29.59, 14.25' Lt.	Adjacent to Fire Hydrant at SW corner of Lot 27, Block B, Blue Lake 3rd Add.	



BAUGHMAN COMPANY
 315 Ellis St.
 Wichita, KS 67211
 316-262-7271
 BaughmanCo.com

BLUE LAKE 3RD ADD.
 Phase 1
BLUELAKE CT. (LOTS 23-30)
 STREET IMPROVEMENTS
 PROJECT NUMBER: 23-01-E416
 DESIGN: AEG DRAWN: TMS
 DATE: October 9, 2023
 SHEET 11 OF 39

NOTE: ROLL TYPE CURB & GUTTER (TYPE 2) TO BE CONSTRUCTED ON THE PAVEMENT SHOWN ON THIS SHEET. TOP OF CURB ELEVATIONS ARE GIVEN FOR FULL HEIGHT CURB (TYPE 4).

File: E:\Projects\Blue Lake 3rd Addition_22-02-P755\Engineering\Phase 1\STR 23-01-E416\Street.dwg